



AECOM
40 British American Boulevard
Latham, NY 12110

518.951.2200 tel
518.951.2300 fax

February 19, 2015

SENT VIA EMAIL

Ms. Sarah Saucier
NYSDEC
625 Broadway
Albany, New York 12233-7014
Phone: (518) 402-9662
E-mail: sarah.saucier@dec.ny.gov

Subject: **NAPL Recovery – Status Report for January 2016**
Site #: 7-09-011
NYSEG – Norwich Former MGP Site

Dear Ms. Saucier:

On behalf of New York State Electric and Gas Corporation (NYSEG), AECOM has prepared this monthly status report to describe events associated with non-aqueous phase liquid (NAPL) recovery at the Norwich Former Manufactured Gas Plant (Site) in Norwich, NY. This letter provides a summary of activities at the Site during the month of January 2016. Figure 1 shows the layout of the NAPL recovery system.

PRODUCT RECOVERY

During system operation throughout the month of January, the NAPL collection system recovered approximately 366 gallons of total fluids (NAPL and water) for a total volume of 96,219 gallons to date. The total fluid recovery rate was approximately 12 gallons per day (gpd). A cumulative total fluid recovery summary is provided in Figure 2.

The system is currently operational in wells RW-09-03, RW-09-06, and RW-10-02. The pumping rates at each of these wells were reduced during the month of January to increase the percentage of NAPL recovered and decrease the percentage of water recovered. The effectiveness of the pumping rate reductions will be evaluated during the February operation and maintenance site visits. Each recovery well will continue to be monitored and pumping activities will be maintained through the month of February.

RECOMMENDATIONS

NAPL recovery and monitoring will continue through the month of February.

Should you have any questions or require additional information in the meantime, please do not hesitate to call me at (518) 951-2391 or Tracy Blazicek at (607) 762-8839.

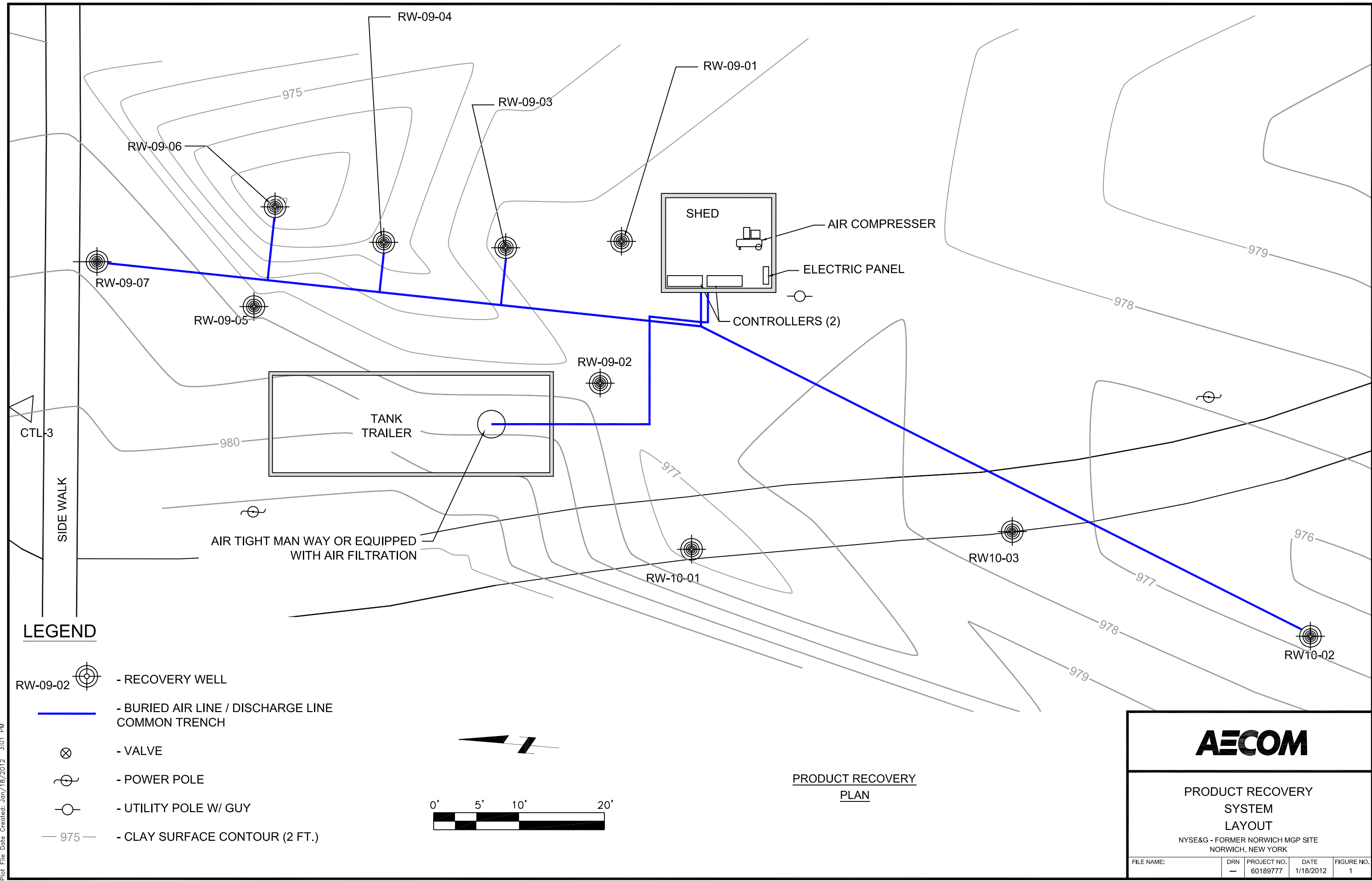
Yours sincerely,

Scott McDonough
Project Manager






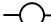

cc: T. Blazicek, NYSEG
Scott Underhill, AECOM

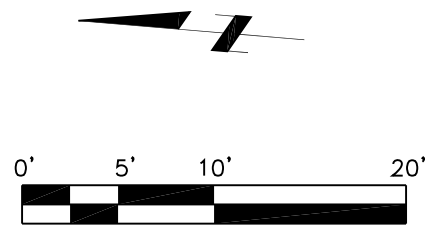
Figures

Plotted By: meisterk
Layout-Sheet Name: RECOVERY MEMO
Plot File Date Created: Jan/18/2012 3:01 PM



LEGEND

-  - RECOVERY WELL
-  - BURIED AIR LINE / DISCHARGE LINE
-  COMMON TRENCH
-  - VALVE
-  - POWER POLE
-  - UTILITY POLE W/ GUY
-  975 - CLAY SURFACE CONTOUR (2 FT.)



PRODUCT RECOVERY PLAN

AECOM

PRODUCT RECOVERY SYSTEM LAYOUT

NYSE&G - FORMER NORWICH MGP SITE
NORWICH, NEW YORK

FILE NAME:	DRN	PROJECT NO.	DATE	FIGURE NO.
	-	60189777	1/18/2012	1

Figure 2
Total Fluids Recovered (2009 - January 2016)
NYSEG Norwich Former MGP Site

