



AECOM
40 British American Boulevard
Latham, NY 12110

518.951.2200 tel
518.951.2300 fax

December 09, 2015

SENT VIA EMAIL

Ms. Sarah Saucier
NYSDEC
625 Broadway
Albany, New York 12233-7014
Phone: (518) 402-9662
E-mail: sarah.saucier@dec.ny.gov

Subject: **NAPL Recovery – Status Report for October and November 2015**
Site #: 7-09-011
NYSEG – Norwich Former MGP Site

Dear Ms. Saucier:

On behalf of New York State Electric and Gas Corporation (NYSEG), AECOM has prepared this monthly status report to describe events associated with non-aqueous phase liquid (NAPL) recovery at the Norwich Former Manufactured Gas Plant (Site) in Norwich, NY. This letter provides a summary of activities at the Site during the months of October and November 2015. Figure 1 shows the layout of the NAPL recovery system.

PRODUCT RECOVERY

On September 23rd the collection system was shut down as the tank trailer reached its allowable storage volume. The tank trailer liquids (NAPL and water) was disposed of offsite on November 5th and returned to the Site on November 6th. The system returned to operation on November 16th.

During system operation since restarting on November 16th, the NAPL collection system recovered approximately 436 gallons of total fluids (NAPL and water) for a total volume of 94,953 gallons to date. The total fluids recovery rate was approximately 31 gallons per day (gpd). A cumulative NAPL recovery summary is provided in Figure 2.

During the September 10th Site visit the pump in well RW-09-07 was found to have malfunctioned. At this time, the pump in RW-09-07 was shut off due to a severed discharge line within the well. This is believed to be the result of a blockage caused by a more viscous tar than typically encountered (See Figure 1). As a result, the system is currently operational in wells RW-09-03, RW-09-06, and RW-10-02. Each recover well will continue to be monitored and pumping activities at RW-09-07 will restart should observed viscosity levels return to a more operational level.



Figure 1 - NAPL From RW-09-07

RECOMMENDATIONS

NAPL recovery and monitoring will continue through the month of December.

Should you have any questions or require additional information in the meantime, please do not hesitate to call me at (518) 951-2391 or Tracy Blazicek at (607) 762-8839.

Yours sincerely,

Scott McDonough
Project Manager

cc: T. Blazicek, NYSEG
Scott Underhill, AECOM

Figures

Plotted By: meisterk
Layout-Sheet Name: RECOVERY MEMO
Plot File Date Created: Jan/18/2012 3:01 PM

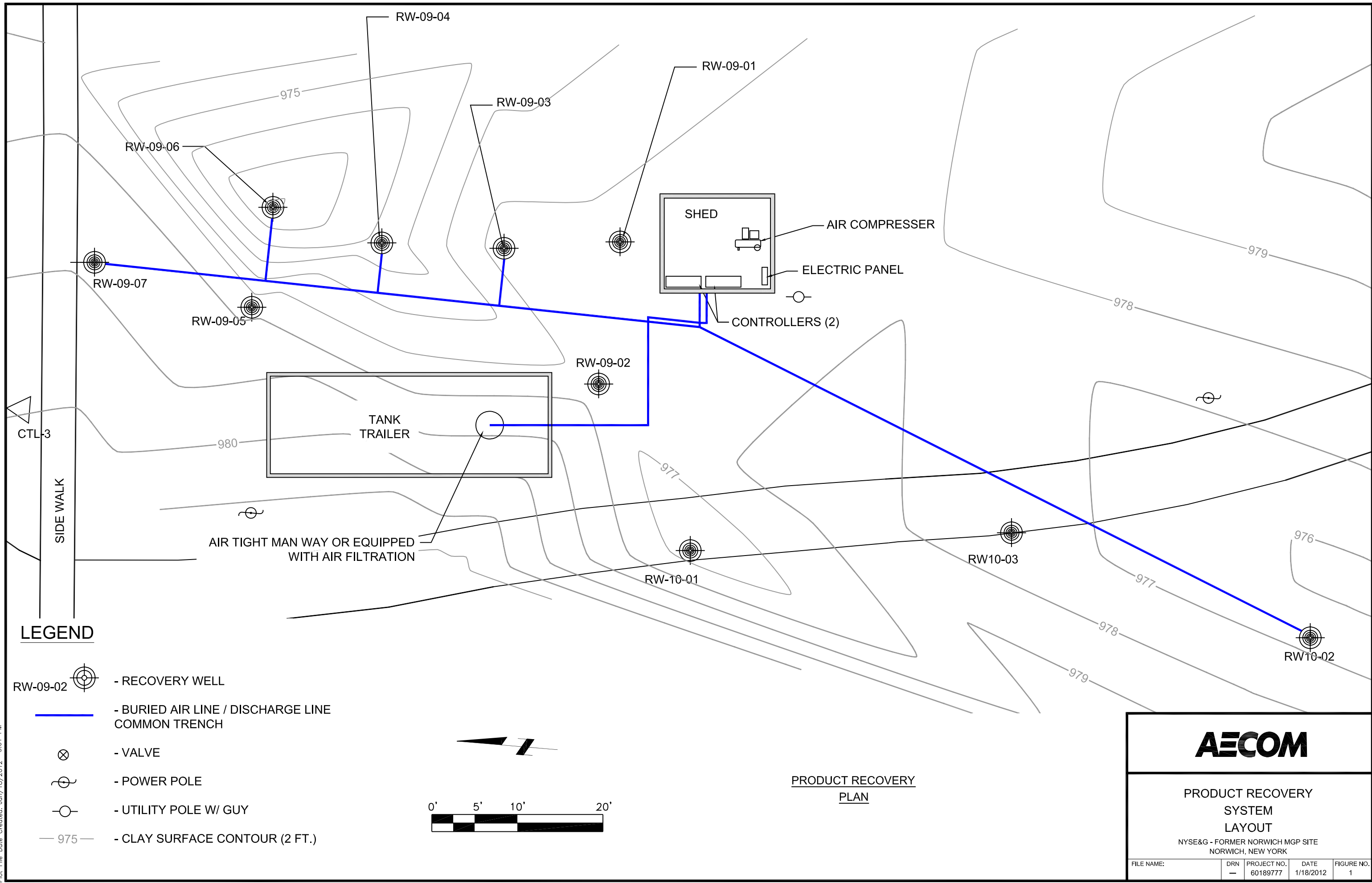


Figure 2
Cumulative NAPL Recovery (2009 - November 2015)
NYSEG Norwich Former MGP Site

