



AECOM  
40 British American Boulevard  
Latham, NY 12110

518.951.2200 tel  
518.951.2300 fax

January 25, 2015

SENT VIA EMAIL

Ms. Sarah Saucier  
NYSDEC  
625 Broadway  
Albany, New York 12233-7014  
Phone: (518) 402-9662  
E-mail: [sarah.saucier@dec.ny.gov](mailto:sarah.saucier@dec.ny.gov)

Subject: **NAPL Recovery – Status Report for December 2015**  
**Site #: 7-09-011**  
**NYSEG – Norwich Former MGP Site**

Dear Ms. Saucier:

On behalf of New York State Electric and Gas Corporation (NYSEG), AECOM has prepared this monthly status report to describe events associated with non-aqueous phase liquid (NAPL) recovery at the Norwich Former Manufactured Gas Plant (Site) in Norwich, NY. This letter provides a summary of activities at the Site during the month of December 2015. Figure 1 shows the layout of the NAPL recovery system.

#### **PRODUCT RECOVERY**

During system operation throughout the month of December, the NAPL collection system recovered approximately 900 gallons of total fluids (NAPL and water) for a total volume of 95,893 gallons to date. The total fluid recovery rate was approximately 30 gallons per day (gpd). A cumulative NAPL recovery summary is provided in Figure 2.

To keep the system operational during freezing conditions, a self-regulating heating coil was attached to the exposed piping that was connected to the above ground tanker to prevent freezing and ensure continued flow. The system is currently operational in wells RW-09-03, RW-09-06, and RW-10-02. Each recover well will continue to be monitored and pumping activities will be maintained through the month of January.

#### **RECOMMENDATIONS**

NAPL recovery and monitoring will continue through the month of January.

Should you have any questions or require additional information in the meantime, please do not hesitate to call me at (518) 951-2391 or Tracy Blazicek at (607) 762-8839.

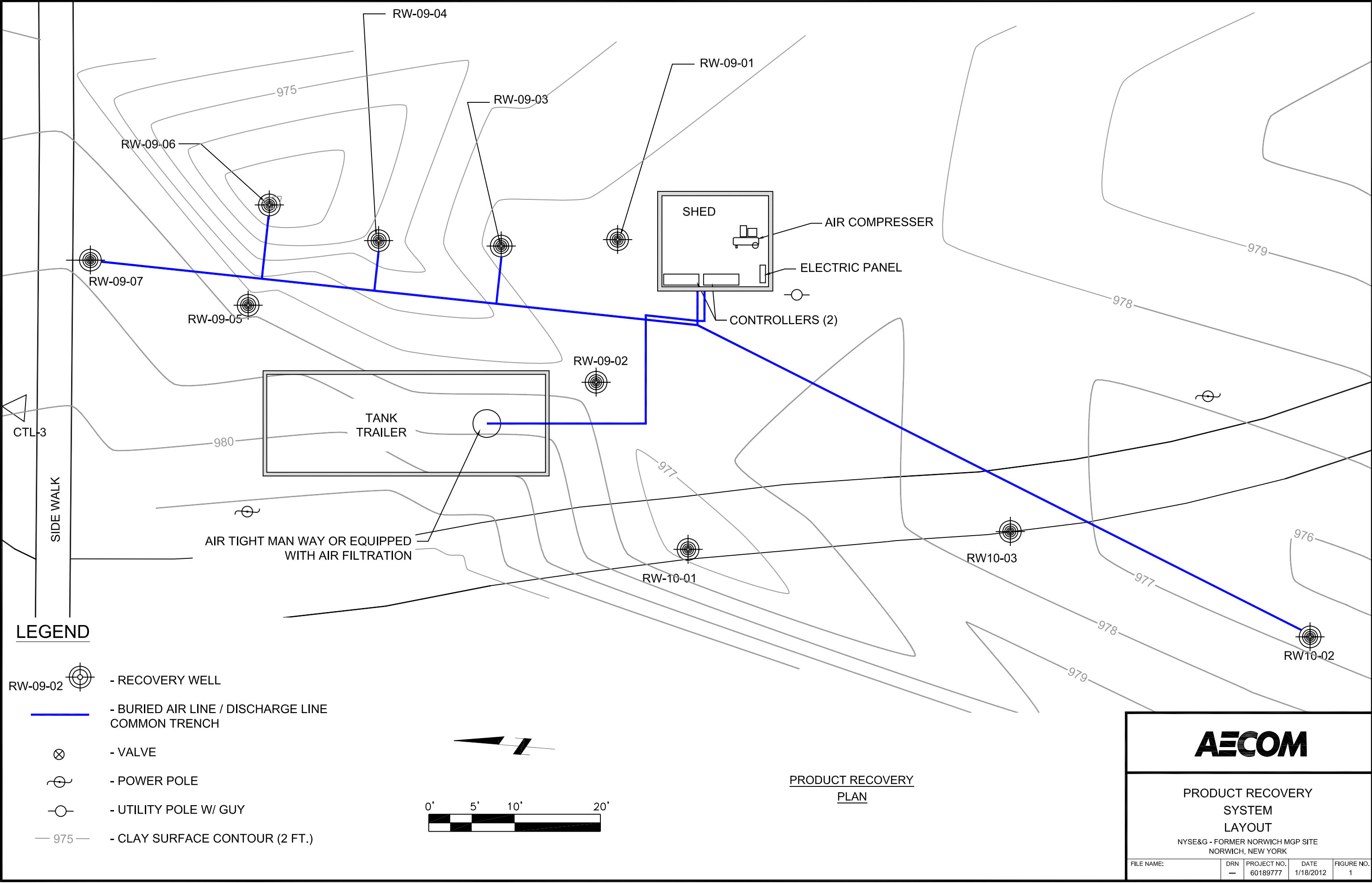
Yours sincerely,

Scott McDonough  
Project Manager

cc: T. Blazicek, NYSEG  
Scott Underhill, AECOM

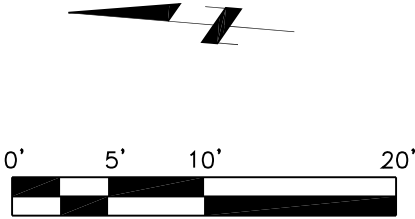
## Figures

Plotted By: meisterk  
Layout-Sheet Name: RECOVERY MEMO  
Plot File Date Created: Jan/18/2012 3:01 PM



LEGEND

- RECOVERY WELL
- BURIED AIR LINE / DISCHARGE LINE
- COMMON TRENCH
- VALVE
- POWER POLE
- UTILITY POLE W/ GUY
- CLAY SURFACE CONTOUR (2 FT.)



PRODUCT RECOVERY  
PLAN



PRODUCT RECOVERY  
SYSTEM  
LAYOUT

NYSE&G - FORMER NORWICH MGP SITE  
NORWICH, NEW YORK

FILE NAME:	DRN	PROJECT NO.	DATE	FIGURE NO.
	-	60189777	1/18/2012	1

**Figure 2**  
**Cumulative NAPL Recovery (2009 - December 2015)**  
**NYSEG Norwich Former MGP Site**

