



AECOM  
40 British American Boulevard  
Latham, NY 12110

518.951.2200 tel  
518.951.2300 fax

July 21, 2016

SENT VIA EMAIL

Ms. Sarah Saucier  
NYSDEC  
625 Broadway  
Albany, New York 12233-7014  
Phone: (518) 402-9662  
E-mail: [sarah.saucier@dec.ny.gov](mailto:sarah.saucier@dec.ny.gov)

Subject: **NAPL Recovery – Status Report for May and June 2016**  
**Site #: 7-09-011**  
**NYSEG – Norwich Former MGP Site**

Dear Ms. Saucier:

On behalf of New York State Electric and Gas Corporation (NYSEG), AECOM has prepared this status report to describe events associated with non-aqueous phase liquid (NAPL) recovery at the Norwich Former Manufactured Gas Plant (Site) in Norwich, NY. This letter provides a summary of activities at the Site during the months of May and June 2016. Figure 1 shows the layout of the NAPL recovery system.

### **PRODUCT RECOVERY**

During system operation throughout the months of May and June, the NAPL collection system recovered approximately 325 gallons of total fluids (NAPL and water) for a total volume of 97,741 gallons to date. May and June system operation, further discussed below, is estimated at approximately 25 days resulting in the total fluid recovery rate of approximately 13 gallons per day (gpd). A cumulative total fluid recovery summary is provided in Figure 2.

During the months of May and June, the site air compressor, responsible for part of the operation of the collection system, continued to encounter operation impediments resulting in a power “trip” or automatic power shutoff. The power shutoff was encountered upon site arrival during several routine site visits. An evaluation of solutions that will allow for continuous recovery system operation is currently underway.

The system is currently operational in wells RW-09-03, RW-09-06, and RW-10-02. Each recovery well will continue to be monitored and pumping activities will be maintained through the month of July.

### **RECOMMENDATIONS**

NAPL recovery and monitoring will continue through the month of July.



Should you have any questions or require additional information in the meantime, please do not hesitate to call me at (518) 951-2208 or Tracy Blazicek at (607) 762-8839.

Yours sincerely,

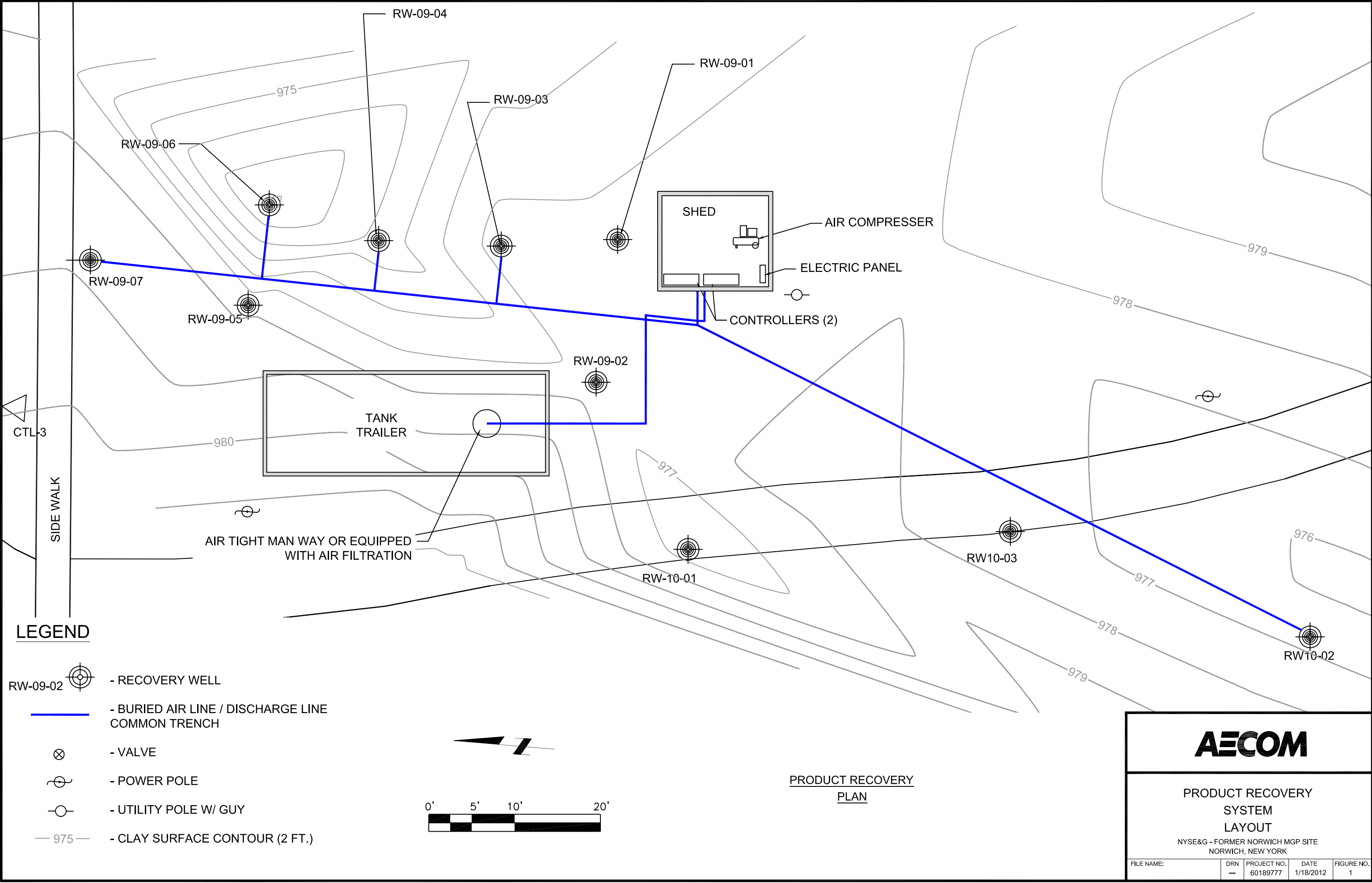
A handwritten signature in black ink that reads "Scott Underhill". The signature is written in a cursive, flowing style.

Scott Underhill, PE  
Program Manager

cc: T. Blazicek, NYSEG  
Melissa Doroski, NYSDOH  
Walt Howard, AECOM  
Gerlinde Wolf, AECOM

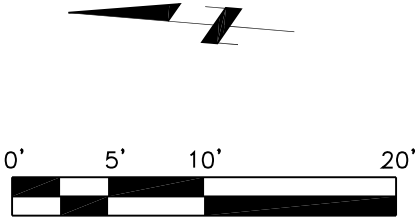
## Figures

Plotted By: meisterk  
Layout-Sheet Name: RECOVERY MEMO  
Plot File Date Created: Jan/18/2012 3:01 PM



LEGEND

- RECOVERY WELL
- BURIED AIR LINE / DISCHARGE LINE
- COMMON TRENCH
- VALVE
- POWER POLE
- UTILITY POLE W/ GUY
- CLAY SURFACE CONTOUR (2 FT.)



PRODUCT RECOVERY  
PLAN



PRODUCT RECOVERY  
SYSTEM  
LAYOUT

NYSE&G - FORMER NORWICH MGP SITE  
NORWICH, NEW YORK

FILE NAME:	DRN	PROJECT NO.	DATE	FIGURE NO.
	-	60189777	1/18/2012	1

**Figure 2**  
**Total Fluids Recovery (2009 - June 2016)**  
**NYSEG Norwich Former MGP Site**

