



**New York State Department of Environmental Conservation**

**State Superfund Program**

**Citizen Participation Plan**  
for  
**Lee Avenue Railroad Area, Site No. 709014**

City of Norwich  
Chenango County, New York

November 2013

# Contents

<u>Section</u>	<u>Page Number</u>
1. What is New York's State Superfund Program? .....	1
2. Citizen Participation Activities .....	2
3. Major Issues of Public Concern.....	7
4. Site Information .....	9
5. Investigation and Cleanup Process.....	12
Appendix A	
Project Contacts and Locations of Reports and Information.....	15
Appendix B	
Site Contact List .....	16
Appendix C	
Site Location Maps .....	21

\* \* \* \* \*

**Note:** The information presented in this Citizen Participation Plan was current as of the date of its approval by the New York State Department of Environmental Conservation. Portions of this Citizen Participation Plan may be revised during the site's investigation and cleanup process.

Potentially Responsible Party: **Hercules Incorporated (Hercules), a wholly owned subsidiary of Ashland Inc. (Ashland) (Potentially Responsible Party)**

Site Name: **Lee Avenue Railroad Area (Site)**

Site Address: **Norwich, New York**

Site County: **Chenango County**

Site Number: **709014**

## **1. What is New York's State Superfund Program?**

New York's State Superfund Program (SSF) identifies and characterizes suspected inactive hazardous waste disposal sites. Sites that pose a significant threat to public health or the environment, such as the site identified above, undergo a process of investigation, evaluation, cleanup, and monitoring.

The New York State Department of Environmental Conservation (NYSDEC) administers the SSF Program with assistance and input from the New York State Department of Health (NYSDOH). When the parties responsible for the contamination of the site are known as "responsible parties", they often pay for or perform the investigation and evaluation of cleanup options under an enforceable consent order. At sites where responsible parties cannot be found or are unable or unwilling to fund an investigation, the State pays for the investigation and may try to recover costs from a responsible party after the investigation and cleanup are complete.

The SSF program contains investigation and cleanup requirements, ensuring that cleanups protect public health and the environment. For more information about the SSF program, go online at: <http://www.dec.ny.gov/chemical/8439.html> .

## **2. Citizen Participation Activities**

### *Why NYSDEC Involves the Public and Why It Is Important*

NYSDEC involves the public to improve the process of investigating and cleaning up contaminated sites, and to enable citizens to participate more fully in decisions that affect their health, environment, and social well being. NYSDEC provides opportunities for citizen involvement and encourages early two-way communication with citizens before decision makers form or adopt final positions.

Involving citizens affected and interest in site investigation and cleanup programs is important for many reasons. These include:

- Promoting the development of timely, effective site investigation and cleanup programs that protect public health and the environment
- Improving public access to, and understanding of, issues and information related to a particular site and that site's remedial process
- Providing citizens with early and continuing opportunities to participate in NYSDEC's site investigation and cleanup process
- Ensuring that NYSDEC makes site investigation and cleanup decisions that benefit from input that reflects the interests and perspectives found within the affected community
- Encouraging dialogue to promote the exchange of information among the affected/interested public, State agencies, and other interested parties that strengthens trust among the parties, increases understanding of site and community issues and concerns, and improves decision making.

This Citizen Participation (CP) Plan provides information about how NYSDEC will inform and involve the public during the investigation and cleanup of the site identified above. The public information and involvement program will be carried out with assistance, as appropriate, from the responsible party.

### *Project Contacts*

Appendix A identifies NYSDEC project contact(s) to whom the public should address questions or request information about the site's investigation and cleanup program. The public's suggestions about this CP Plan and the CP program for the site are always welcome. Interested people are encouraged to share their ideas and suggestions with the project contacts at any time.

### *Locations of Reports and Information*

The locations of the reports and information related to the site's remedial program also are identified in Appendix A. These locations provide convenient access to important project documents for public review and comment. Some documents may be placed on the NYSDEC web site. If this occurs, NYSDEC will inform the public in fact sheets distributed about the site and by other means, as appropriate.

### *Site Contact List*

Appendix B contains the site contact list. This list has been developed to keep the community informed about, and involved in, the site's investigation and cleanup process. The site contact list will be used periodically to distribute fact sheets that provide updates about the status of the project. These will include notifications of upcoming activities at the site, as well as availability of project documents and announcements about public comment periods.

The site contact list includes, at a minimum:

- chief executive officer and planning board chairperson of each county, city, town and village in which the site is located;
- residents, owners, and occupants of the site and properties adjacent to the site;
- the public water supplier which services the area in which the site is located;
- any person who has requested to be placed on the site contact list;
- the administrator of any school or day care facility located on or near the site for purposes of posting and/or dissemination of information at the facility;
- location(s) of reports and information.

The site contact list will be reviewed periodically and updated as appropriate. Individuals and organizations will be added to the site contact list upon request. Such requests should be submitted to the NYSDEC project contact(s) identified in Appendix A. Other additions to the site contact list may be made at the discretion of the NYSDEC project manager, in consultation with other NYSDEC staff as appropriate.

### *CP Activities*

The table at the end of this section identifies the CP activities, at a minimum, that have been and will be conducted during the site's investigation and cleanup program. The public is informed about these CP activities through fact sheets and notices distributed at significant points during the program. Elements of the investigation and cleanup process that match up with the CP activities are explained briefly in Section 4.

- **Notices and fact sheets** help the interested and affected public to understand contamination issues related to a site, and the nature and progress of efforts to investigate and clean up a site.

- **Public forums, comment periods and contact with project managers** provide opportunities for the public to contribute information, opinions and perspectives that have potential to influence decisions about a site's investigation and cleanup.

The public is encouraged to contact project staff at any time during the site's investigation and cleanup process with questions, comments, or requests for information.

This CP Plan may be revised due to changes in major issues of public concern identified in Section 3 or in the nature and scope of remedial activities. Modifications may include additions to the site contact list and changes in planned citizen participation activities.

#### *Technical Assistance Grant*

The site identified above poses a significant threat to public health or the environment, so that a qualifying community group may apply for a Technical Assistance Grant (TAG). The purpose of a TAG is to provide funds to the qualifying community group to obtain independent technical assistance. This assistance helps the TAG recipient to interpret and understand existing environmental information about the nature and extent of contamination related to the site and the development/implementation of a remedy.

An eligible community group must certify that its membership represents the interests of the community affected by the site, and that its members' health, economic well-being, or enjoyment of the environment may be affected by a release or threatened release of contamination at the site.

For more information about TAGs, go online at: <http://www.dec.ny.gov/regulations/2590.html> .

Note: The table identifying the citizen participation activities related to the site's investigation and cleanup program follows on the next page:

Citizen Participation Requirements (Activities)	Timing of CP Activity(ies)
<b>Remedial Investigation (RI) Phase:</b>	
<ul style="list-style-type: none"> <li>• Prepare site contact list</li> <li>• Establish document repository</li> <li>• Prepare Citizen Participation (CP) Plan</li> <li>• Place approved RI Work Plan in document repository</li> <li>• Distribute informational flyer to site contact list that announces availability of RI Work Plan and describes upcoming RI field work</li> </ul>	Following effective date of Consent Order. Also, following NYSDEC approval of the RI Work Plan
<b>After PRP Completes Remedial Investigation:</b>	
<ul style="list-style-type: none"> <li>• Distribute fact sheet to site contact list that describes RI results</li> </ul>	Before NYSDEC approves the RI Report
<b>When NYSDEC Approves Remedial Investigation Report:</b>	
<ul style="list-style-type: none"> <li>• Place approved RI Report in document repository</li> </ul>	When NYSDEC approves RI Report
<b>When NYSDEC Releases Proposed Remedial Action Plan (PRAP):</b>	
<ul style="list-style-type: none"> <li>• Place PRAP in document repository</li> <li>• Distribute fact sheet to site contact list that describes PRAP and announces 30-day comment period and public meeting</li> <li>• Conduct 30-day public comment period</li> <li>• Hold public meeting about PRAP</li> </ul>	When NYSDEC releases PRAP. Comment period begins/ends as per dates identified in fact sheet. Public meeting is held during the comment period
<b>When NYSDEC Issues Record of Decision (ROD):</b>	
<ul style="list-style-type: none"> <li>• Place ROD in document repository</li> <li>• Distribute notice to site contact list that announces availability of ROD. ROD includes responsiveness summary of significant comments about PRAP</li> </ul>	When NYSDEC issues ROD

<b>Before Start of Remedial Action:</b>	
<ul style="list-style-type: none"> <li>Distribute fact sheet to site contact list that describes upcoming remedial action</li> </ul>	Before the start of remedial action at the site
<b>When NYSDEC Issues Certificate of Completion (COC) or Similar Site Closure Document:</b>	
<ul style="list-style-type: none"> <li>Place COC in document repository</li> <li>Distribute fact sheet to site contact list that announces issuance of COC</li> </ul>	Within 10 days after NYSDEC issues COC or other similar site closure document



### **3. Major Issues of Public Concern**

This section of the CP Plan identifies major issues of public concern that relate to the Lee Avenue Railroad Area (referred to as the Property or Site). Additional major issues of public concern may be identified during the course of the Site's investigation and cleanup process.

The Property is currently owned by the Chenango County Industrial Development Agency (CCIDA) and is zoned as railroad according to the City of Norwich Zoning Map (March 2008). The New York Susquehanna and Western (NYS&W) Railway Corporation maintains an inactive rail line within the Property. Provided below is major issues of public concern that relate to the Property.

#### **Impacts to Surface Soil**

Surface soil samples were collected from the Lee Avenue Railroad Area in 2011 and 2013 to complete Site characterization. No constituents of concern were detected above the NYSDEC Restricted Use Soil Cleanup Objectives for Industrial use with the exception of arsenic.

No activities are currently conducted at the Property. The Property is privately owned; and therefore, trespassing is prohibited without prior authorization from the property owner. As a result, public exposure to the identified contaminants is unlikely and thus there are no major issues of public concern associated with the Property.

#### **Impacts to Groundwater**

The Property is topographically positioned on top of bedrock. As a result, the shallow aquifer is absent at the Property north of Rexford Street. The shallow aquifer is present east of the Property as the bedrock begins to slope downward forming the Chenango River valley.

Groundwater samples collected from the shallow aquifer east of the Property have identified volatile organic compounds, including trichloroethene (TCE - a chemical commonly used to remove grease from metal) and cis-1,2-dichloroethene (a break down product of TCE) above the NYSDEC Class GA Groundwater Quality Standards. Recent investigations completed between 2011 and 2013 were successful in defining the horizontal and vertical extent of groundwater impacts suspected to be emanating from the Lee Avenue Railroad Area.

No private, commercial or industrial supply wells were identified within the area of investigation east of the Property. The City of Norwich public water supply is serviced by City Supply Wells located north, beyond the limits of known impact, and within the bedrock aquifer system. As a result, public exposure to the identified contaminants is unlikely and thus there are no major issues of public concern associated with the Site and the public water supply within the investigation area. Additionally, the City's well field immediately east of the Chenango River, south of Rexford Avenue, is not in use.

## Soil Vapor Intrusion

Environmental sub-slab soil vapor and indoor air samples were collected from properties within the investigation area. Results of the sampling have identified the presence of TCE in sub-slab and indoor air basement samples. The goal of the soil vapor intrusion investigation activities is to determine whether actions are needed to address the potential exposure to Site-related contaminants, which may move from contaminated groundwater into the indoor air of an overlying structure through a process referred to as soil vapor intrusion. For additional information on soil vapor intrusion refer to [http:// www.dec.ny.gov/regulations/2588.html](http://www.dec.ny.gov/regulations/2588.html).

To date, approximately 60 homes have been equipped with sub-slab depressurization systems (SSDS) to eliminate the potential for soil vapor intrusion. A SSDS system, similar to a radon mitigation system, is essentially a venting system which draws the air from beneath the building and vents it to the outdoor air above the roofline. Not all locations sampled require mitigation. The State reviews data collected to make recommendations for mitigation, monitoring, resampling or no further action. These decisions are based on multiple factors including concentrations of TCE over time, integrity of the buildings, and concentrations of TCE in environmental samples collected near the property. For more information regarding the decision making process refer to [http://www.health.ny.gov/environmental/investigations/soil\\_gas/svi\\_guidance](http://www.health.ny.gov/environmental/investigations/soil_gas/svi_guidance).

As expected, other volatile organic compounds may be detected in the indoor air sample because they are a part of our everyday lives. These compounds are present in the products we store and use indoors and in the outdoor air that enters buildings. The concentrations of the other volatile organic compounds detected in the indoor air are generally consistent with those commonly found in indoor air and generally do not represent a health concern. However, if during the sample event concentrations are above recommended concentrations established by the State, the State will recommend the owner take action to remove the potential source of that hazard.

#### **4. Site Information**

Appendix C contains a map identifying the location of the Site.

##### *Site Description*

The Site consists of an approximate three acre portion of NYS&W Railway Corporation railroad right of way (Norwich Tax Map Number 136.65-6-37). A single rail line runs north-south on the Site; however, no physical building structures are present on the Site. The Site is approximately 1,750 feet west of the Chenango River and less than 0.50 mile north of the city center. The Site is abutted by mixed industrial and residential properties to the east, by residential properties to the west and is bisected north-south by Rexford Street.

Historic records indicate the Site was operated by the Delaware Lackawanna and Western Railroad Utica Division as early as 1903 (or earlier). The railroad likely serviced industrial and commercial properties along its path including former industries along Lee Avenue and State Street, including Abbott and Kohn Ribbon Company, General Laboratory Associates, Inc., Simmonds Precision, Norwich Shoe Company, Rexford Corporation, Bennett-Ireland and Norwich Wire Works.

According to the CCIDA draft Annual Report for 2011, flood and storm damage in recent years has rendered the rail line inoperable since 2006. There have been recommendations to modify the railroad into a rail trail from the City of Norwich south to the City of Oxford; however, plans have not been finalized.

The Site is currently classified as a Class 2 site on the Registry of Inactive Hazardous Waste Disposal Sites and is defined as having a significant threat to public health or the environment following concerns for soil vapor migration.

Historically other industries that potentially utilized chlorinated solvents including TCE have been identified in the vicinity of the Lee Avenue Railroad Area, south of Rexford Street (Norwich Shoe Company, Rexford Corporation, Bennett-Ireland and Norwich Wire Works). However, at the present time, no environmental reports or spill records have been identified for these sites to provide confirmation that they are sources of groundwater impact.

##### *Investigation History*

In 2004, the NYSDEC initiated a soil vapor investigation at Lee Avenue Railroad Area and Lee Avenue Plant (1-11 Lee Avenue) after nuisance odor complaints were reported by the tenants at the Lee Avenue Plant. Sub-slab soil gas samples were collected and analyzed for volatile organic compounds. Volatile organic compounds including TCE were detected. NYSDEC determined TCE concentrations potentially posed a risk to human health; therefore, mitigation (removal) of the vapors was required. The Lee Avenue Plant building was subsequently equipped with a SSDS system. The State (NYSDEC and NYSDOH) proceeded with a vapor intrusion investigation of

approximately 66 dwellings east of Lee Avenue. The Site was assigned New York State Site Number 709014 for the ongoing investigations to identify the extent of TCE impacts.

### **Environmental Restoration Program**

In 2005 the CCIDA submitted an application to NYSDEC Environmental Restoration Program (ERP) to request funds under the brownfields program to supplement investigation activities initiated by NYSDEC to further evaluate TCE impacts in the vicinity of the Site. The CCIDA was assisting the City of Norwich to revitalize the area by developing the Norwich Museum District and providing additional parking for the Northeast Classic Car Museum. On June 8, 2005, the NYSDEC approved the application and reserved funds to complete investigation activities in accordance with the State Assistance Contract (SAC). The scope of work completed under the ERP program with assistance from URS Corporation was limited to areas east of the Northeast Classic Car Museum and included 14 grab groundwater samples, the installation of 14 monitoring wells, and screening of 47 additional homes for soil vapor. The work was completed until the ERP funding was exhausted in 2009. No soil or groundwater data was collected at the Northeast Classic Car Museum.

On December 14, 2009, the NYSDEC issued a letter stating CCIDA fulfilled its obligations under SAC which resulted in the installation of 36 SSDS mitigations systems; however, additional offsite soil vapor investigation was warranted and would be completed by NYSDEC under the State Superfund program.

### **State Superfund Program**

Between 2010 and 2011, NYSDEC contracted Henningson, Durham & Richardson Architecture and Engineers (HDR) of Albany, New York to complete additional groundwater delineation and soil vapor intrusion studies within the community. The scope of work completed by HDR under the Superfund program included the collection of soil samples on the Site and Lee Avenue Plant; collection of grab groundwater samples from 12 locations east of the Lee Avenue Plant; installation of 12 permanent monitoring wells east of the Lee Avenue Plant; and, screening of 75 additional homes for soil vapor.

On July 10, 2012, Hercules signed an Order on Consent and Administrative Settlement with the State to continue environmental investigation activities associated with the Lee Avenue Railroad Area. Under this agreement, Hercules agreed to perform supplemental investigations and continue implementation of the State's remedial approach. This work included delineation of groundwater impacts emanating from the Lee Avenue Railroad Area; design and installation of the recommended vapor intrusion mitigation systems; and, complete additional off-site vapor intrusion investigation and mitigation as needed in concurrence with the State.

In August 2012, a Records Search Report was submitted summarizing historical operation and investigation information for the Site and surrounding community. In addition, Hercules mailed

an informational flyer to homeowners and business owners, notifying site contacts, of Hercules participation in continued remedial activities. In September 2012, a Remedial Investigation Work Plan was submitted to complete the investigation / delineation work referenced above. NYSDEC approved of the work plan on October 11, 2012. Remedial investigation activities commenced November 2012.

As of the Spring 2013, the vertical and horizontal extent of TCE in groundwater has been defined. Approximately 60 home/businesses have had vapor mitigation systems installed since 2004, 32 homes continued to be monitored, 64 locations have been granted no further action and 8 homes are recommended for mitigation in 2013. A draft Remedial Investigation Report will be prepared and submitted to State for review and comment in late 2013.

## **5. Investigation and Cleanup Process**

### *Investigation*

A detailed study of the site is being performed by Hercules under a consent order, with oversight by NYSDEC and NYSDOH. This detailed study is officially called a “Remedial Investigation”. The investigation work plan is officially called a “Remedial Investigation Work Plan” and is available for public review at the “Locations of Reports and Information” identified in Appendix A.

The site investigation has several goals:

- 1) define the nature and extent of contamination in soil, surface water, groundwater and any other parts of the environment that may be affected;
- 2) identify the source(s) of the contamination;
- 3) assess the impact of the contamination on public health and the environment; and
- 4) provide information to support the development of a proposed remedy to address the contamination.

NYSDOH reviews and recommends activities that will be performed during the investigation to ensure that a complete picture of potential health impacts is understood. Such activities include identifying the ways contamination can reach people, such as through direct contact, eating, drinking, or breathing.

The information collected during the site investigation will be summarized in a report called a Remedial Investigation Report or RI Report.

### *Feasibility Study*

After the site investigation has begun, Hercules with oversight by NYSDEC will conduct a “Feasibility Study”. This study uses information developed during the site investigation phase to develop and evaluate potential ways to clean up (remedy) contamination related to the site.

### *Proposed Remedy*

The evaluation of possible remedies ends with a recommended proposal to eliminate the threat posed by contaminants at the site. NYSDEC approves or prepares this proposal, officially called a “Proposed Remedial Action Plan” (PRAP). The PRAP describes the remedy preferred by NYSDEC, or a no action or no further action alternative. The PRAP summarizes the decision that led to the recommendation of the preferred remedy by discussing each alternative and the reasons for choosing or rejecting it. The goal of any cleanup plan is to protect public health and the environment. NYSDEC will present the PRAP to the public for its review and comment during a 30-day comment period and at a public meeting.

### *Selected Remedy*

NYSDEC considers public comments as it selects the remedy to address contamination related to the site. The selected remedy will be described in a document officially called a “Record of Decision” (ROD). The ROD will explain why the remedy was selected and respond to public comments. This document will be placed in the location of reports and information. If the selected remedy is no action or no further action, NYSDEC may then take steps to reclassify the site or remove the site from its list of contaminated sites.

### *Cleanup Action*

If the Record of Decision for the site calls for cleanup action, the project then moves to designing and performing the cleanup actions to address the site contamination. When cleanup actions have been completed, NYSDEC will approve or prepare a final engineering report that describes the cleanup actions undertaken and certifies that cleanup requirements have been achieved or will be achieved.

### *Certificate of Completion*

Upon approval of the final engineering report, NYSDEC may issue a Certificate of Completion (COC). The COC would recognize the findings of the final engineering report. The COC would note that the cleanup program achieved a cleanup level consistent with specific categories of use for the site. The recipient of the COC would be entitled to limited liability as long as it complied with the terms of the COC, and other conditions.

A COC may be modified or revoked if, for example, the recipient does not comply with the terms of the COC, or if the recipient commits fraud regarding its certification that it has met cleanup levels.

### *Site Management*

Site management is the last phase of the site cleanup program. This phase begins when the COC is issued. Site management may be conducted by NYSDEC, or by the responsible party under NYSDEC oversight, if contamination will remain in place. Site management incorporates any institutional and engineering controls required to ensure that the remedy implemented for the site remains protective of public health and the environment. All significant activities are detailed in a Site Management Plan.

An institutional control is a non-physical restriction on use of the site, such as a deed restriction that would prevent or restrict certain uses of the property. An institutional control may be used when the cleanup action leaves some contamination that makes the site suitable for some, but not all uses.

An engineering control is a physical barrier or method to manage contamination. Examples include: caps, covers, barriers, fences, and treatment of water supplies.

Site management also may include the operation and maintenance of a component of the remedy, such as a system that is pumping and treating groundwater. Site management continues until NYSDEC determines that it is no longer needed.

During the Site Management phase, NYSDEC may also take steps to reclassify the site or remove the site from the Registry.



## **Appendix A**

### **Project Contacts and Locations of Reports and Information**

#### **Project Contacts**

For information about the site's investigation and cleanup program, the public may contact any of the following project staff:

#### **New York State Department of Environmental Conservation (NYSDEC):**

Gary Priscott  
Project Manager  
NYSDEC Region 7  
Division of Environmental Remediation  
1679 Route 11  
Kirkwood, NY 13795  
Phone: (607) 775-2545, Ext. 116  
Email: gwprisco@gw.dec.state.ny.us

Diane Carlton  
Citizen Participation Specialist  
NYSDEC Region 7  
615 Erie Blvd W  
Syracuse, NY 13204  
Phone: (315) 426-7413  
Email: dvcarlto@gw.dec.state.ny.us

#### **New York State Department of Health (NYSDOH):**

Justin Deming  
Public Health Specialist  
NYSDOH  
Bureau of Environmental Exposure Investigation  
Empire State Plaza, Corning Tower, Room 1787  
Albany, NY 12237  
Phone: (518) 402-7860  
Email: BEEI@health.state.ny.us

#### **Locations of Reports and Information**

The facilities identified below are being used to provide the public with convenient access to important project documents:

Guernsey Memorial Library,  
3 Court Street  
Norwich, NY 13815  
Attn: Connie Dalrymple, Director  
Phone: 607-334-4034

NYSDEC Region 7  
Division of Environmental Remediation  
1679 Route 11  
Kirkwood, NY 13795  
Attn: Gary Priscott  
Phone: 607-775-2545  
Hours: (call for appointment)

## **Appendix B Site Contact List**

**SITE CONTACT LIST (ATTACHED)**

**APPENDIX B SITE CONTACT LIST  
CITIZEN PARTICIPATION PLAN**

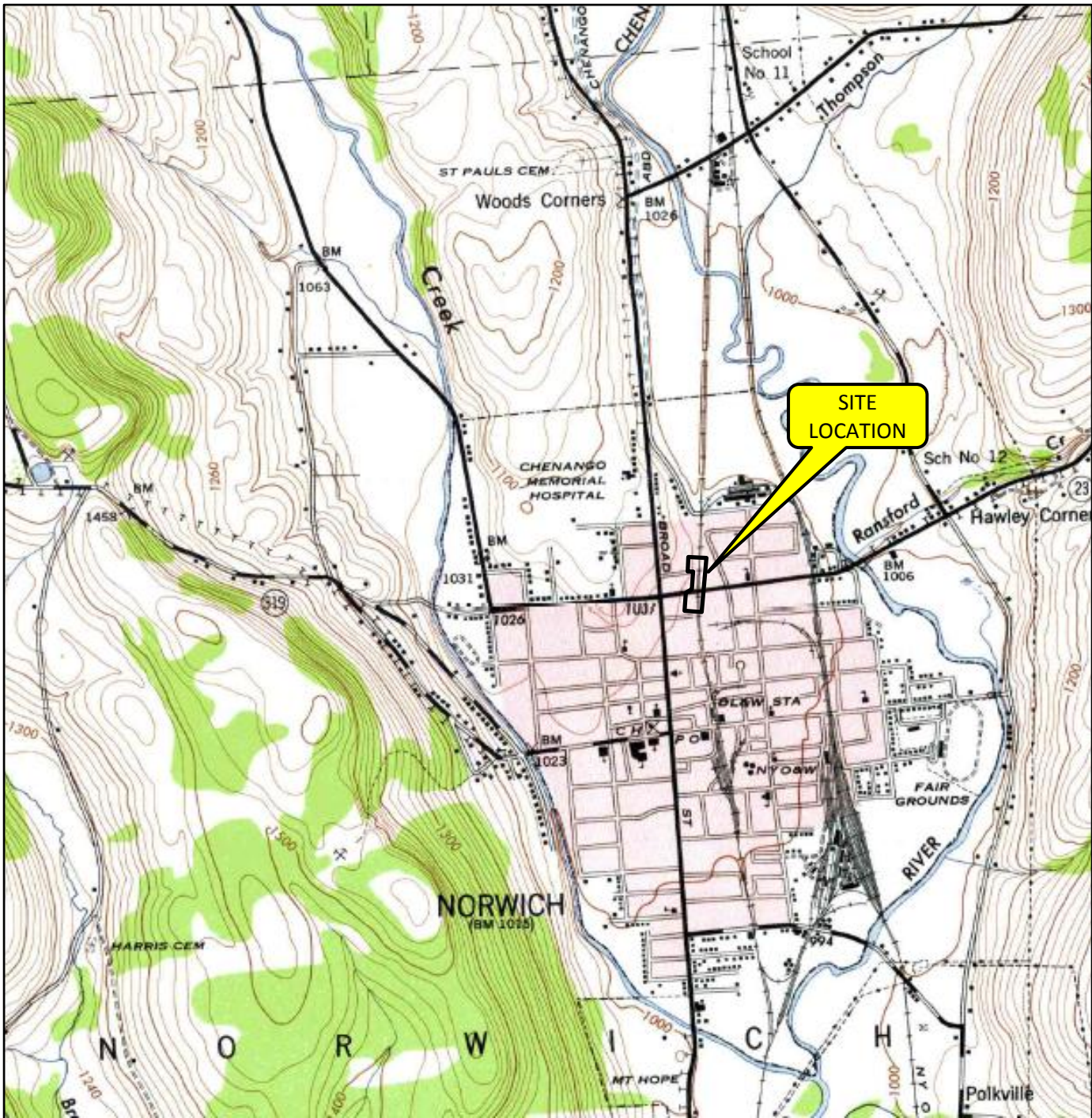
<b>Name</b>	<b>Address</b>	<b>PHONE #</b>	<b>Email</b>
<b>State Agency Contacts</b>			
Gary Priscott Project Manager	Division of Environmental Remediation New York State Department of Environmental Conservation 1679 Route 11 Kirkwood, NY 13795	Office (607) 775-2545, Ext. 116	<a href="mailto:gwprisco@gw.dec.state.ny.us">gwprisco@gw.dec.state.ny.us</a>
Margaret Sheen Assistant Regional Attorney	Office of General Counsel New York State Department of Environmental Conservation Region 7 615 Erie Blvd. West Syracuse, NY 13204-2400	Office (315) 426-7400	<a href="mailto:masheen@gw.dec.state.ny.us">masheen@gw.dec.state.ny.us</a>
Krista Anders Public Health Specialist	New York State Department of Health Bureau of Environmental Exposure Investigation Empire State Plaza Corning Tower Room 1787 Albany, NY 12237	Office (518) 402-7860	<a href="mailto:kma06@health.state.ny.us">kma06@health.state.ny.us</a>
Justin Deming Public Health Specialist	New York State Department of Health Bureau of Environmental Exposure Investigation Empire State Plaza, Corning Tower, Room 1787 Albany, NY 12237	Office (518) 402-7860	<a href="mailto:jhd01@health.state.ny.us">jhd01@health.state.ny.us</a>

<b>State Agency Contacts</b>			
Melissa A. Doroski, MPH Public Health Specialist	New York State Department of Health Bureau of Environmental Exposure Investigation Empire State Plaza, Corning Tower, Room 1787 Albany, NY 12237	Office (518) 402-7860	<a href="mailto:mxm29@health.state.ny.us">mxm29@health.state.ny.us</a>
<b>Site Owner(s)</b>			
Ms. Melanie Boyer	New York Susquehanna and Western Railway Corp. 1 Railroad Avenue Cooperstown, New York 13326	607-547-2555, Ext 255	<a href="mailto:MBoyer@NYSW.com">MBoyer@NYSW.com</a>
Steve Craig Executive Director	Chenango County Industrial Development Agency 15 South Broad Street Norwich, NY 13815	607-334-1400	<a href="mailto:scraig@chenangony.org">scraig@chenangony.org</a>
<b>Adjacent Properties</b>			
Mr. Chris Ulatowski	Atlantic Coast Buildings, LLC 1-11 Lee Avenue Norwich, NY13815	On file	On file
Executive Director	Classic Car Museum 24 Rexford Street Norwich, NY 13815 (includes 23 State Street)	On file	On file

Mr. Paul Kennedy	Kennedy Storage Inc. 17-21 State Street Norwich, NY 13815  Mailing Address: <i>Confidential</i>	On file	
Neal M. Clipston Dawn L. Strobel	Little Miracles Daycare Lisc # 597746 65 Silver Street Norwich, NY  Mailing Address: <i>Confidential</i>	On file	
Residential Properties within Study Area	<i>Confidential</i>	On file	
<b>City/County Officials</b>			
Ms. Donna M. Jones Director	Chenango County Department of Planning and Development 5 Court Street, Norwich, NY 13815	607-337-1640	
Mr. Joseph Maiurano Mayor, City of Norwich	Mayor's Office One City Plaza Norwich, New York 13815	607-334-1201	
Mr. Carl Ivarson	Department of Public Works	607-334-1243	

Superintendent	One City Plaza Norwich, NY 13815		
Ms. Connie Dalrymple Director	Guernsey Memorial Library 3 Court Street Norwich, NY 13815	607-334-4034	guernsey@4cls.org
<b>Hercules Contacts</b>			
James Vondracek Project Manager	Ashland Inc. EH&S DS-4	1-866-323-3921	
Richmond L. Williams Attorney	5200 Blazer Parkway Dublin, Ohio 43017		

## **Appendix C - Site Location Maps**



<b>TARGET QUAD NAME:</b>	NORWICH, NY.
<b>MAP YEAR:</b>	1944
<b>SERIES:</b>	7.5
<b>SCALE:</b>	1 : 24000
<b>SITE NAME:</b>	LEE AVENUE RAILROAD AREA
<b>ADDRESS:</b>	LEE AVENUE NORWICH, NY 13815
<b>LAT / LONG:</b>	42.5378 / -75.5216



