

(Fact Sheet Begins Next)

## Act Now to Continue Receiving Information About This Site!

DEC's Division of Environmental Remediation (DER) now distributes information about contaminated sites *electronically by email*.

If you would like to continue to receive information about the contaminated site featured in this fact sheet:

**You must sign up for the DER email listserv:**

[www.dec.ny.gov/chemical/61092.html](http://www.dec.ny.gov/chemical/61092.html)

DER cannot register your email address - only the email address owner can do so. If you already have signed up for the listserv for the county in which the site is located, you need do nothing.



### Why You Should Go “Paperless”:

- ☒ Get site information faster and share it easily.
- ☒ Receive information about all sites in a chosen county - read what you want, delete the rest.
- ☒ It helps the environment and stretches your tax dollars.

**If “paperless” is not an option for you**, call or write to the DER project manager identified in this fact sheet. Indicate that you need to receive paper copies of fact sheets through the Postal Service. Include the site name in your correspondence. The option to receive paper is available to individuals only. Groups, organizations, businesses, and government entities are assumed to have email access.



**Department of  
Environmental  
Conservation**

## Where to Find Information

Access project documents through the  
DECinfo Locator:

<https://www.dec.ny.gov/data/DecDocs/727014>

Or in person:

**Canastota Public Library**  
102 W Center St  
Canastota, NY 13032  
(315) 697-7030

## Who to Contact

Comments and questions are welcome and  
should be directed as follows:

**Project-Related Questions**  
Justin Starr, P.G.  
NYSDEC  
625 Broadway  
Albany NY, 12237  
(518) 402-9662  
[justin.starr@dec.ny.gov](mailto:justin.starr@dec.ny.gov)

**Project-Related Health Questions**  
Arunesh Ghosh  
Public Health Specialist  
NYSDOH  
ESP Corning Tower, RM 1787  
Albany, NY 12237  
Phone: (518) 402-7860  
[bee@health.ny.gov](mailto:bee@health.ny.gov)

**For more information about New York's  
Manufactured Gas Plant Program, visit:**

[www.dec.ny.gov/chemical/24904.html](http://www.dec.ny.gov/chemical/24904.html)

# FACT SHEET

**Manufactured Gas Plant Program**

**NM - Canastota**

**Former Manufactured Gas  
Plant (MGP) Site**  
424 E. North Canal Street  
Canastota, NY 13032

**October 2021**

**SITE No. 727014**

**NYSDEC REGION 7**

## Notice of Availability: Decision Document

The New York State Department of Environmental Conservation (NYSDEC) announces that it has issued the Decision Document (DD) for the NM – Canastota MGP site (“site”) located at 424 E. North Canal Street, Canastota, Madison County. Please see Figure 1 for the site location.

The DD presents the remedy selected to address contamination related to the site and why the remedy was chosen. The estimated cost to implement the remedy is \$7.4 million.

NYSDEC held a 30-day public comment period on the proposed remedy from May 19, 2021 through June 18, 2021. Any comments received during the public comment period, along with the administrative record, were considered in preparing the final DD for the site.

- Access the DD and other project documents online through the DECinfo Locator: <https://www.dec.ny.gov/data/DecDocs/727014>
- Documents also are available at the location(s) identified at left under “Where to find information.”

**Decision Document:** The following is a summary of the chosen remedy described in the DD. Also see Figure 2.

- **Excavation** - Excavation of contaminated soil to depths of 6 to 8 feet below grade, with off-site disposal of approximately 6,900 cubic yards of MGP-impacted soil. Subsurface structures associated with past MGP operations, including a tar well/separator and hot well, will also be removed and properly disposed. Clean fill will be brought in to replace the excavated soil and to establish the design grades at the site.
- **In-Situ Solidification (ISS)** - ISS will be implemented within portions of the excavation bottom extending to depths approximately 15 feet below the existing site grades, where the remaining soil exceeds the commercial use soil cleanup objectives. The contaminated soil will be mixed in-place with solidifying agents such as Portland cement and/or other binding agents using an excavator or auger. The result is a low permeability mass that slows groundwater flow and inhibits the migration of contaminants.
- **Site Cover System** - A site cover will be required to allow for commercial use of the site. The cover will consist of, but may not be limited to, on-site buildings, gravel, and pavement as well as a 1-foot layer of clean soil in

# MANUFACTURED GAS PLANT PROGRAM

landscaped areas. The soil cover will be placed over a demarcation layer, with the upper six inches of soil of sufficient quality to maintain vegetation.

- Site Management Plan (SMP) - Implementation of a SMP for long-term management of remaining contamination as required by the Environmental Easement, including plans for: (1) Institutional and Engineering Controls (IC/ECs); (2) monitoring; (3) operation and maintenance; and (4) reporting.
- Environmental Easement - Recording of an easement as an IC to prevent future exposure to any residual contamination remaining at the site.

**Site Description:** The former MGP is located on the Village of Canastota Department of Public Works (DPW) property. The 6.34-acre site is bounded by East North Canal Street to the south, Roberts Street and undeveloped land owned by the Canastota Central School Board to the north, the Greater Lenox Ambulance Service and residential properties to the west, and residential properties to the east. Approximately half of the site area is a paved lot, with the remainder occupied by the DPW garage and gravel areas. The area is served by a public water supply. The former MGP operated from 1900 to 1926 and was demolished during the 1930s and 1940s. The property was vacant until it was sold to the Village of Canastota in 1969.

**Summary of the Investigation:** The primary contaminants of concern at the site are non-aqueous phase liquid, in the form of coal tar, and polycyclic aromatic hydrocarbons (PAHs). Coal tar itself includes volatile organic compounds (VOCs) comprised primarily of benzene, toluene, ethylbenzene, and xylene (BTEX), as well as PAHs. Investigations conducted at the site showed the presence of coal tar in the soil and elevated concentrations of BTEX and PAH contamination in soil and groundwater.

Additional site details, including environmental and health assessment summaries, are available on NYSDEC's Environmental Site Remediation Database (by entering the site ID, 727014) at:

<https://www.dec.ny.gov/cfm/externalapps/derexternal/index.cfm?pageid=3>

**MGP Program Overview:** New York's MGP Program oversees the investigation and cleanup of former MGP sites. Sites where contamination has been released to the environment go through a process of investigation, evaluation, cleanup, and monitoring.

The gas manufacturing process involved the heating of coal and/or petroleum products to produce a gas mixture. Once cooled and purified, the gas was distributed through a local pipeline network. The gas was used for heating and cooking much like natural gas is used today. In the early years, the gas was also used for lighting in homes and in streetlights. A dense, oily liquid known as coal tar would condense out of the gas at various stages during its production, purification, and distribution, and be discharged to the subsurface.

NYSDEC attempts to identify parties responsible for site contamination and require cleanup before committing State funds.

For more information about the MGPs, visit:

<https://www.dec.ny.gov/chemical/8430.html>

---

***We encourage you to share this fact sheet with neighbors and tenants, and/or post this fact sheet in a prominent area of your building for others to see.***

---

## Stay Informed with DEC Delivers

Sign up to receive site updates by email:

[www.dec.ny.gov/chemical/61092.html](http://www.dec.ny.gov/chemical/61092.html)

Note: Please disregard if you already have signed up and received this fact sheet electronically.

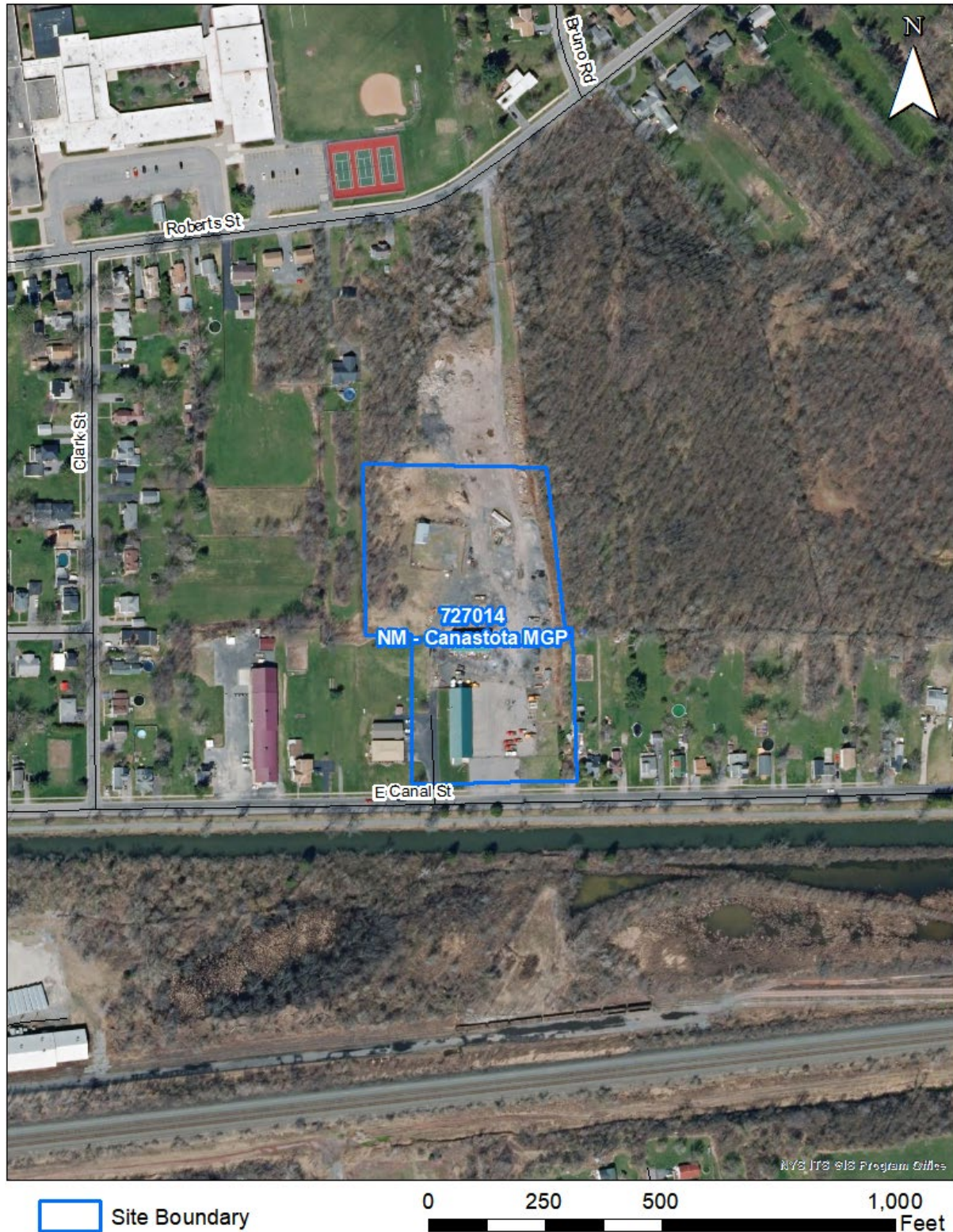
## DECinfo Locator

Interactive map to access DEC documents and public data about the environmental quality of specific sites: <https://www.dec.ny.gov/pubs/109457.html>



# MANUFACTURED GAS PLANT PROGRAM

Figure 1 - Site Location Map



# MANUFACTURED GAS PLANT PROGRAM

## Figure 2 - Selected Remedy

