

FER TABLES

Table 1	Summary of Remedial Activities Work Plans
Table 2	Remedial Activities and/or Investigations per Area
Table 3	Air Monitoring and CAMP Action Levels
Table 4	Contractors and Consultants
Table 5	Contaminants of Concern and Applicable SCOs
Table 6	Soil Sample Results that Exceed Commercial or Industrial SCOs

TABLE 6
SOIL SAMPLE RESULTS THAT EXCEED
COMMERCIAL OR INDUSTRIAL SCOs

Sample ID	AEC/AOI	Approximate Sample Depth (ft.)	Contaminant	Detected Level (ppm)	6 NYCRR Part 375-6.8(b) Exceedance
BBW300SW1	AEC-2	6	Benzo(a)pyrene	1.04	CSCO
AAW275SW1	AEC-2	6	Lead	1597	CSCO
			Mercury	4.91	CSCO
AAW250SW1	AEC-2	7	Lead	1954	CSCO
			Mercury	5.69	CSCO
AAW250SW1 (DUP)	AEC-2	7	Lead	3332	CSCO
			Mercury	7.2	ISCO
BBW225SW1	AEC-2	7	Lead	1479	CSCO
ABL1SW-2 (DUP)	AEC-2	5	Benzo(a)pyrene	1.01	CSCO
SB94	AEC-2	0-2	Copper	1046	CSCO
AEC2-TP1	AEC-2	10	Lead	1600	CSCO
AEC2-TP1S	AEC-2	10	Lead	1280	CSCO
SB96	AEC-2	0-2.5	Copper	823	CSCO
			Lead	1109	CSCO
S-Headwall	AEC-5	13	Benzo(a)pyrene	1.42	ISCO
WWNGWL30	AEC-5	13	Xylene	830	CSCO
Retaining Wall-2	AEC-5	13	Benzo(a)pyrene	1.74	ISCO
Retaining Wall-1	AEC-5	13	Benzo(a)pyrene	4.22	ISCO
			Lead	2954	CSCO
K-WESTSW	AEC-7	3	Benzo(a)pyrene	1.05	CSCO
L-WESTSW	AEC-7	3	Benzo(a)pyrene	1.13	ISCO
ESW2	AEC-8A	10	Benzo(a)pyrene	2.3	ISCO
			Mercury	4.9	ISCO
SB104	AEC-8A	3-4	Benzo(a)pyrene	5.4	ISCO
FDTP-14	AEC-8A	3	Benzo(a)pyrene	1.8	ISCO
8ASSW5	AEC-8A	4	Benzo(a)pyrene	1.4	ISCO
			Mercury	9	ISCO
SB108	AEC-8A	4-6	Copper	978	CSCO
7A-EASTSW	AEC-8A	16	Benzo(a)pyrene	6.3	ISCO
7A-BTM	AEC-8A	24	Benzo(a)pyrene	4.42	ISCO
7A-SOUTHSW	AEC-8A	16	Benzo(a)anthracene	11.5	ISCO
			Benzo(b)fluoranthene	16.4	ISCO
			Benzo(a)pyrene	15	ISCO
7A-WESTSW	AEC-8A	16	Benzo(a)pyrene	1.7	ISCO
7A-NORTHSW	AEC-8A	16	Benzo(a)pyrene	5.3	ISCO
O-SOUTHSW	AEC-8A	5	Benzo(a)pyrene	3.15	ISCO
O-WESTSW	AEC-8A	6	Benzo(a)pyrene	1.6	ISCO
SB64	AOI-2	3-4	Copper	387	CSCO
			Lead	2661	CSCO
			Mercury	3.44	CSCO
SB63	AOI-2	0-2	Benzo(a)pyrene	1.7	ISCO
		6-8	Lead	1008	CSCO
SB62	AOI-2	2-4	Mercury	4.63	CSCO
		4-6	Lead	1004	CSCO
			Mercury	4.37	CSCO
SB66	AOI-2	8-10	Mercury	7.85	ISCO
SB65	AOI-3	2-4	Lead	1673	CSCO
			Mercury	5.35	CSCO
AOI3-TP3	AOI-3	8	Benzo(a)pyrene	2.4	ISCO
			Mercury	4.1	CSCO
SB72	AOI-3	0-2	Benzo(a)pyrene	3	ISCO
NA-2	AOI-3	0-0.5	Benzo(a)pyrene	1.1	ISCO
SB82	AOI-3	6-7.4	Arsenic	41	ISCO
NA-1	AOI-3	0-0.5	Lead	1610	CSCO
			Mercury	3.3	CSCO
SB90	AOI-3	0-2	PCBs	1.2	CSCO
ALLW270SW1B*	AOI-3	2	Copper	343	CSCO
			Benzo(a)pyrene	2467	ISCO
SB71	AOI-4	4-6	Mercury	3.89	CSCO
AOI4-TP2 (DEC)	AOI-4	4	Mercury	7.4	ISCO
AOI4-TP2	AOI-4	3	Lead	1295	CSCO
			Mercury	5.45	CSCO
AOI4-TP3	AOI-4	3	Mercury	6.35	ISCO
SB105	AOI-5	2-4	Mercury	3.11	CSCO
SB109	AOI-5	2-3	Benzo(a)pyrene	1.9	ISCO
SB114	AOI-5	4-6	Copper	354	CSCO
SB3	AOI-6	9-10	Arsenic	19	ISCO

*Sample removed

FER DRAWINGS

Drawing L-1 Site Location Map

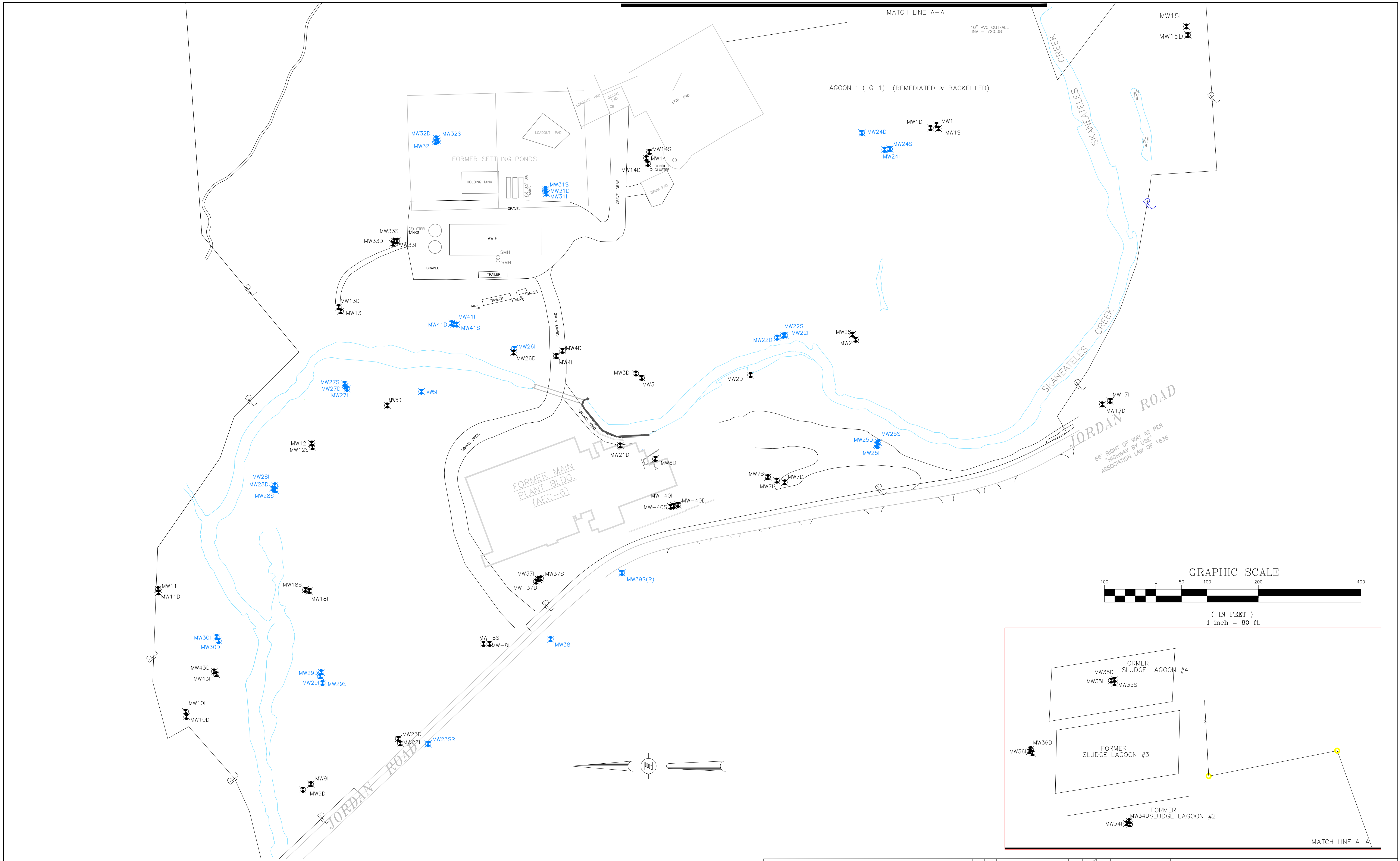
Drawing D-1 Site Plan

Drawing D-2 Area of Environmental Concern and Area of Interest Map

Drawing D-3 Exceedances of 6NYCRR Part 375 Commercial/Industrial SCOs after
Remedy


Drawing D-4 Engineering Controls Plan

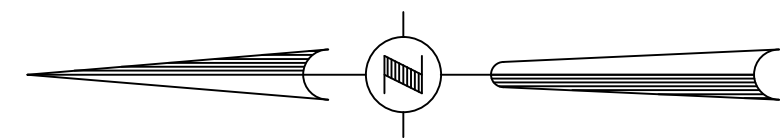
Drawing D-5 Engineering Control Details



THIS DRAWING AND ALL INFORMATION HEREON IS THE PROPERTY OF ENVIROSPEC CONSULTING AND SHALL NOT BE COPIED OR USED FOR ANY PURPOSE AND WITHOUT ITS EXPRESSLY FURNISHED. THE DRAWING AND ANY COPIES THEREOF (PARTIAL OR COMPLETE) SHALL BE RETURNED TO THE ORIGINATOR UPON DEMAND.

ENVIROSPEC PROJECT #E12-623

 349 NORTHERN BOULEVARD SUITE 3 ALBANY, NY 12205 P:518.453.2203 F:518.453.2204	<table border="1"><tr><th>W.O. No.</th><th>REVISION</th><th>DATE</th><th>BY</th><th>CHK</th></tr><tr><td></td><td></td><td></td><td></td><td></td></tr></table>	W.O. No.	REVISION	DATE	BY	CHK						<table border="1"><tr><th colspan="2">DRAWING STATUS</th></tr><tr><td></td><td></td></tr></table>	DRAWING STATUS				<table border="1"><tr><th colspan="2">SITE PLAN</th></tr><tr><td></td><td></td></tr></table>	SITE PLAN				STAUFFER MANAGEMENT COMPANY SITE SKANEATELES FALLS, NEW YORK
		W.O. No.	REVISION	DATE	BY	CHK																
DRAWING STATUS																						
SITE PLAN																						
SCALE: 1"=80'	DRAWING NO.: D-1	SHEET: 1	REV. NO.: 1																			



MATCH LINE A-A

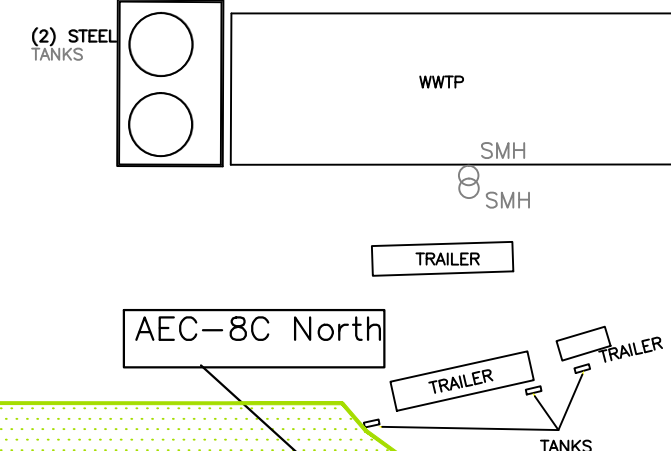
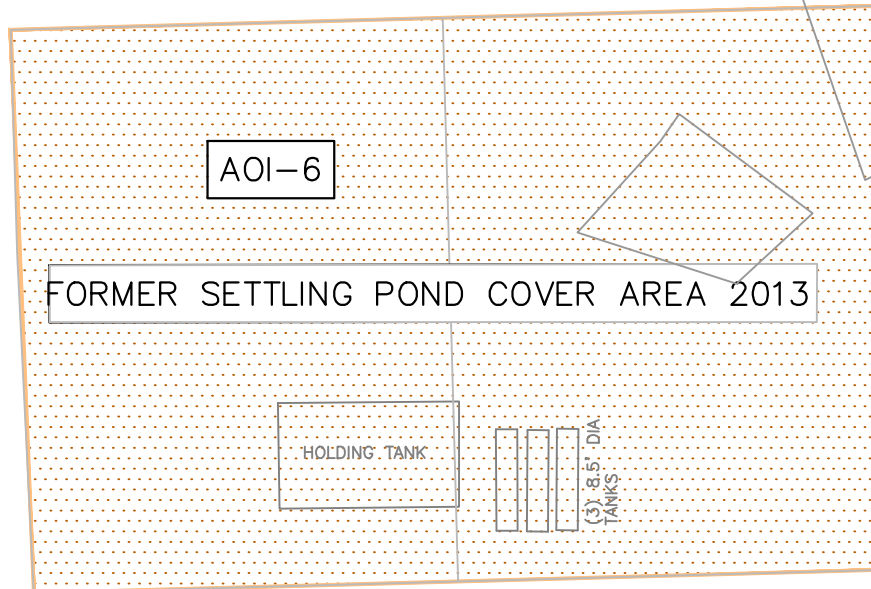
AOI-6

LAGOON 1 IRM 2007/2008

NORTH WALL NOTCH
LG-1
2007-2008

SOUTHWEST NOTCH
LG-1
2007-2008

NORTHWEST NOTCH
LG-1
2007-2008



NORTHEAST
CORNER AEC-1
2006

CHROMIUM
REMOVAL AREA
AEC-1
NORTHWALL
EXCAVATION
2006 and 2012

CREEK BANK
REMEDATION
AREA B
2012

LEOPARD SPOT
2005

CREEK
REMEDATION
AREA A
2012

AOI-1

AEC-8C North

AEC-8C

AOI-2

AEC-2 EAST SIDEWALL/CREEK BANK
2005

AEC-8C South

AEC-5 CREEK REMEDIATION
2005

AOI-5

HEADWALL
WINGWALL
RETAINING WALL

AEC-8B

AEC-8A

AEC-5 CREEK
REMEDATION
2005

AEC-5

AOI-3 2 FOOT
COVER
EXCAVATION
2012

AEC-2

AEC-6

AEC-7

4CWESTSW
EXCAVATION 2012

LIMITS OF AEC-7
(OIL SPILL IRM)

66' RIGHT OF WAY AS PER
"HIGHWAY BY USE"
ASSOCIATION LAW OF 1836

JORDAN ROAD

MATCH LINE B-B

AEC-5

2005 MILL POND EXCAVATION
(PCB, PAH AND LEAD)
SEDIMENT & SPOILS AREA
EXCAVATION 2-4 FT

- | | | | |
|--|---|--|--------------|
| | AEC-1 LIMITS | | AOI-1 LIMITS |
| | AEC-2 LIMITS | | AOI-2 LIMITS |
| | AEC-5 LIMITS | | AOI-3 LIMITS |
| | AEC-6 LIMITS | | AOI-4 LIMITS |
| | AEC-7 LIMITS | | AOI-5 LIMITS |
| | AEC-8 LIMITS | | AOI-6 LIMITS |
| | LAGOONS 1 EXCAVATION LIMITS | | |
| | UPLAND EXCAVATION LIMITS AND LIMITS OF FILL | | |
| | 2005 CREEK EXCAVATION LIMITS AND LIMITS OF FILL | | |
| | FORMER LAGOONS 2, 3, AND 4 LIMITS | | |
| | CREEK BANK EXCAVATION LIMITS | | |

GRAPHIC SCALE



(IN FEET)
1 inch = 80 ft.

MATCH LINE B-B

AEC-5

LIMITS OF LEAD
EXCAVATION
AREA 2012

AOI-3

LIMITS OF
NRCB-1
EXCAVATION
2012

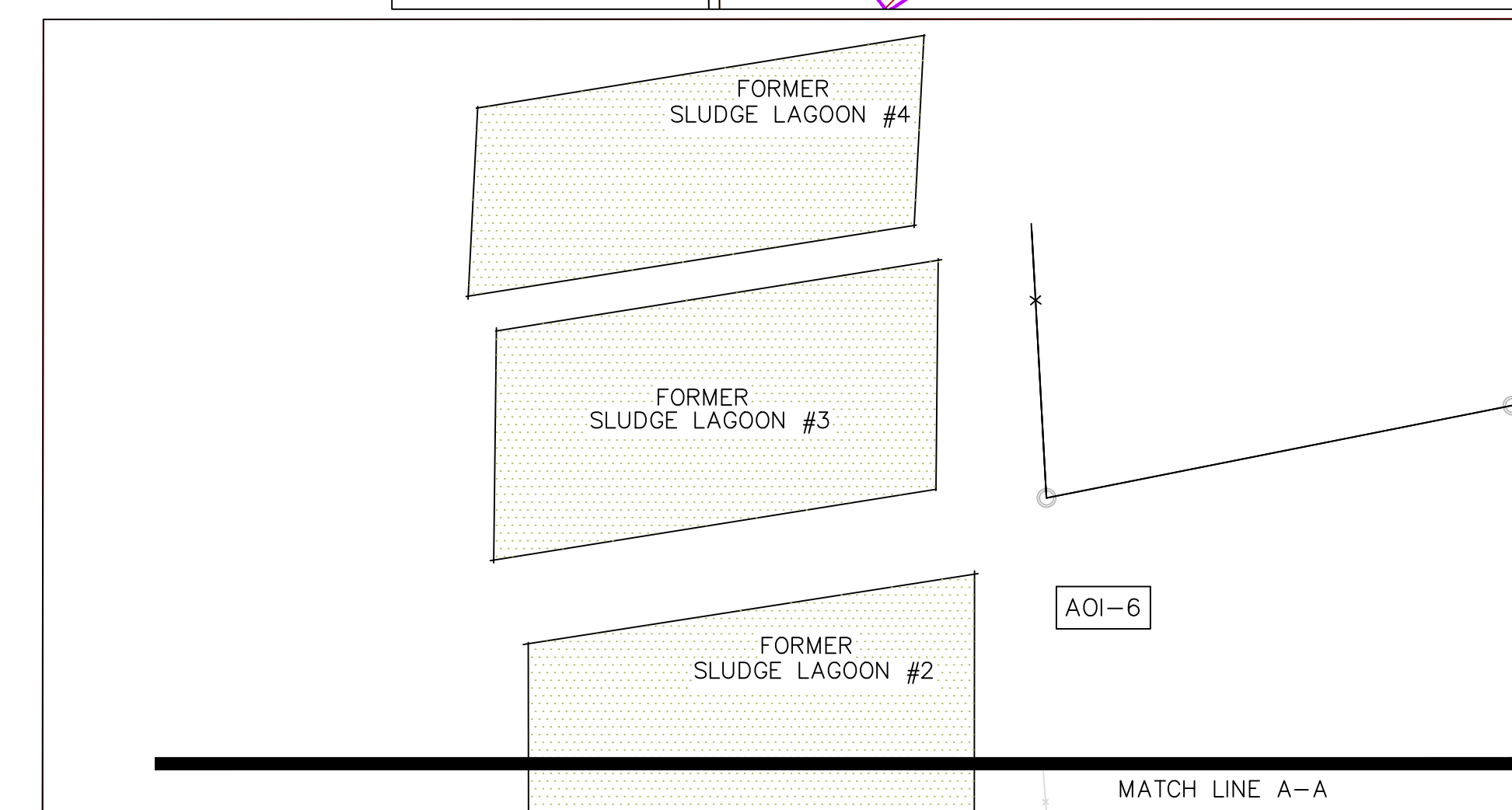
AOI-4

LIMITS OF
2005 EXCAVATION
2012

LIMITS OF
MERCURY EXCAVATION
2012

AOI-4 2 FOOT
COVER
EXCAVATION
2012

EDW100 AREA
2005 AND 2006



MATCH LINE A-A

envirospec

310 NORTHERN BOULEVARD SUITE 3
ALBANY, NY 12204
P: 518.453.2203
F: 518.453.2204

ENVIROSPEC PROJECT #E12-623

W.O.No. REVISION

DATE APR

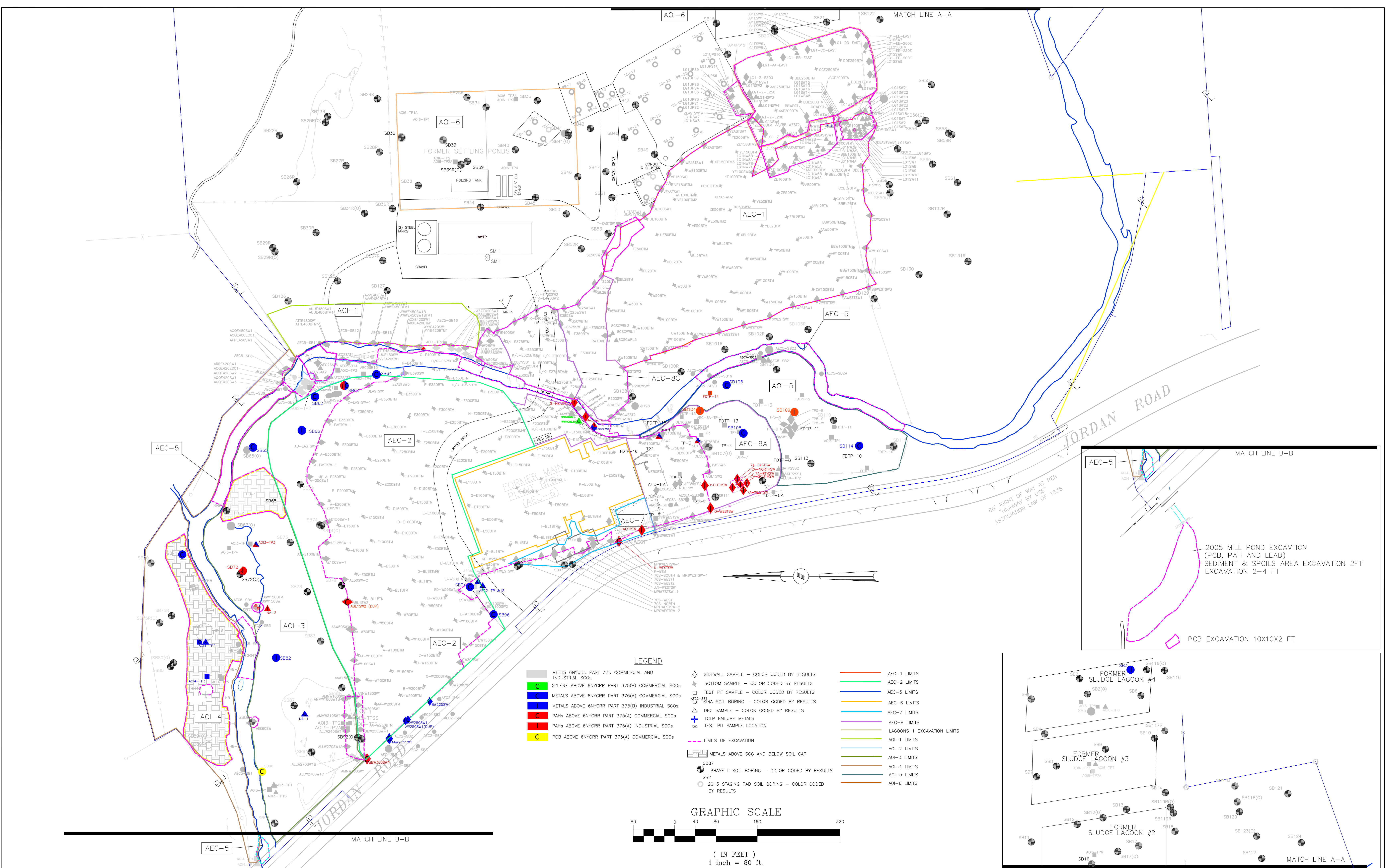
DRAWING STATUS
FOR
REFERENCE
ONLY

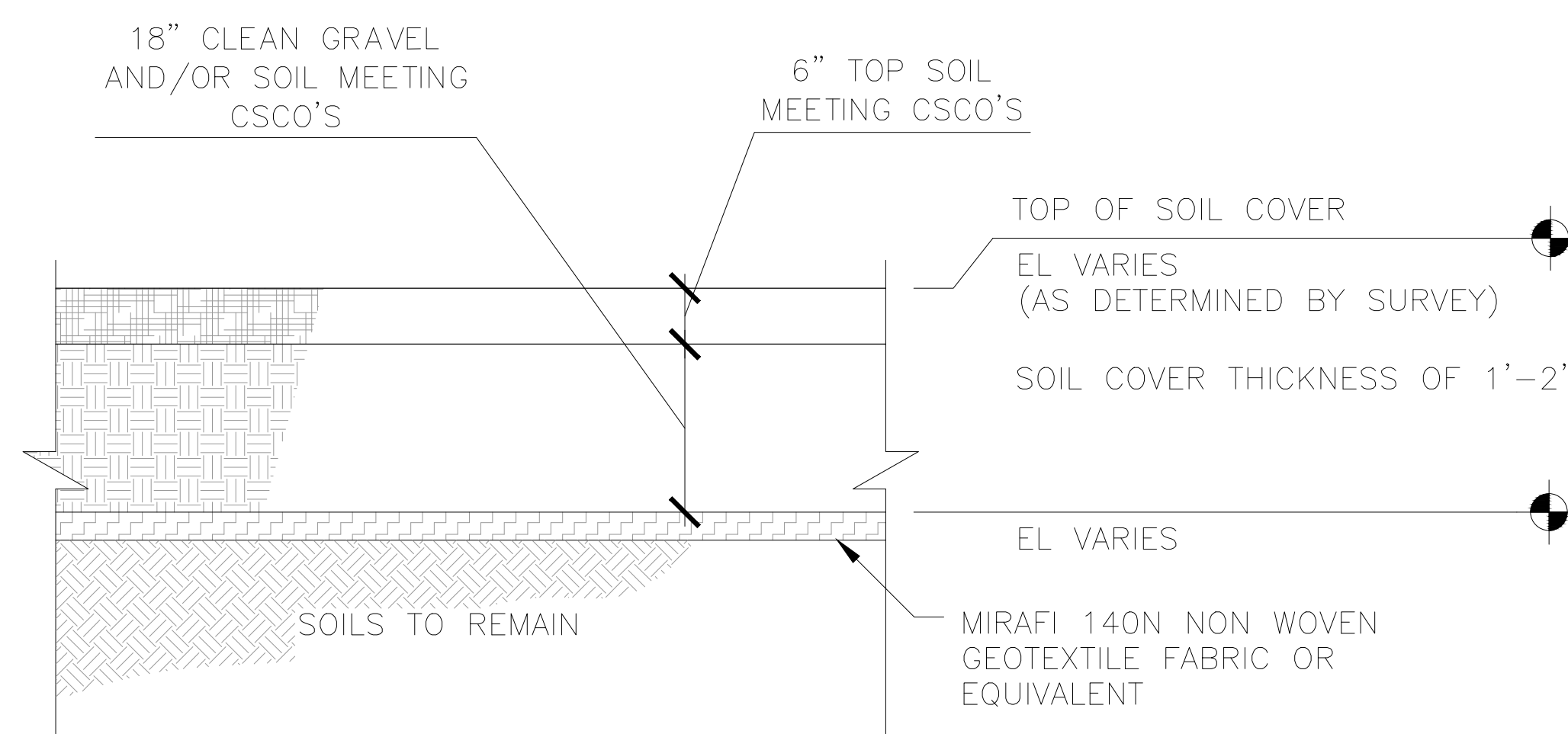
AEC / AOI LOCATIONS WITH
LIMITS OF EXCAVATION/FILL

STAUFFER MANAGEMENT COMPANY SITE
SKANEATELES FALLS, NEW YORK

SCALE 1"=80' DRAWING No. D-2 SHEET 1 OF 1

THIS DRAWING AND ALL INFORMATION HEREON IS THE PROPERTY OF ENVIROSPEC CONSULTING AND SHALL NOT BE COPIED OR USED
EXCEPT FOR THE PURPOSE FOR WHICH IT IS EXPRESSLY FURNISHED. THE DRAWING AND ANY COPIES THEREOF (PARTIAL OR COMPLETE) SHALL
BE RETURNED TO THE OWNER UPON DEMAND.

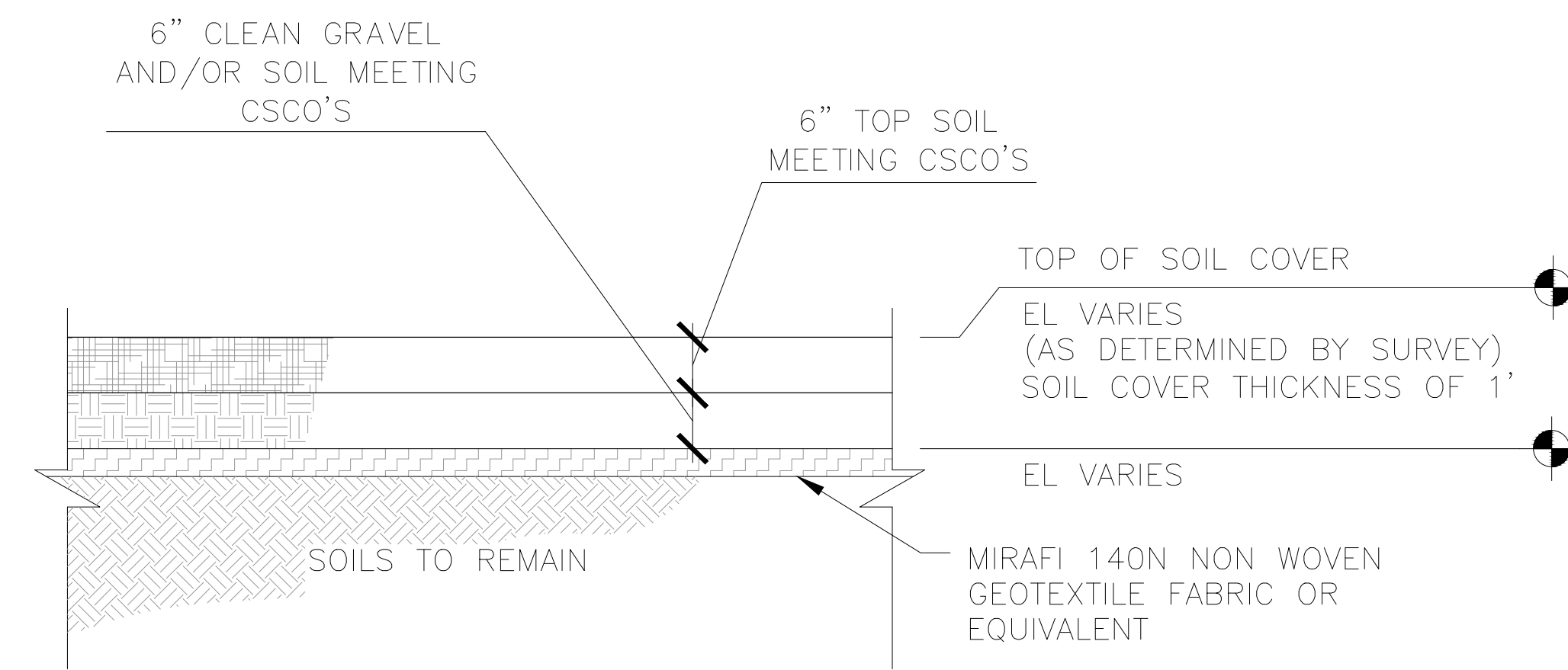




- NOTES:
1. CAPPING MATERIALS (GRAVEL AND TOP SOIL) MUST MEET ECOLOGICAL SOIL CLEANUP OBJECTIVES FOR VOC, SVOC'S, PCB'S, AND METALS AS SET FORTH IN 6NYCRR PART 375-6.8(b) WITHIN 25' OF CREEK AND COMMERCIAL SCO'S OUTSIDE 25'.
 2. EXCAVATION DEPTHS AND CAP THICKNESS VARIES AND IS DEPENDENT UPON LOCATION:
 - A. CAPS WITHIN 25' OF CREEK AREAS REQUIRE A (2) FOOT CAP WITH DEMARCATION LAYER AS SPECIFIED.
 - B. CAPS OUTSIDE 25' OF CREEK REQUIRE A (1) OR (2) FOOT CAP WITH DEMARCATION LAYER AS SPECIFIED.
 3. DEMARCATION LAYERS SHALL CONSIST OF NON WOVEN GEOTEXTILE FABRIC (MIRAFIX 140N) OR EQUIVALENT.
 4. SOIL CAPS CONSTRUCTED WITHIN 100 YEAR FLOOD PLAINS ARE TO BE RETURNED TO PREEXISTING ELEVATIONS AS DETERMINED BY SURVEY.

AOI-3 AND AOI-4 TYPICAL SOIL COVER DETAIL

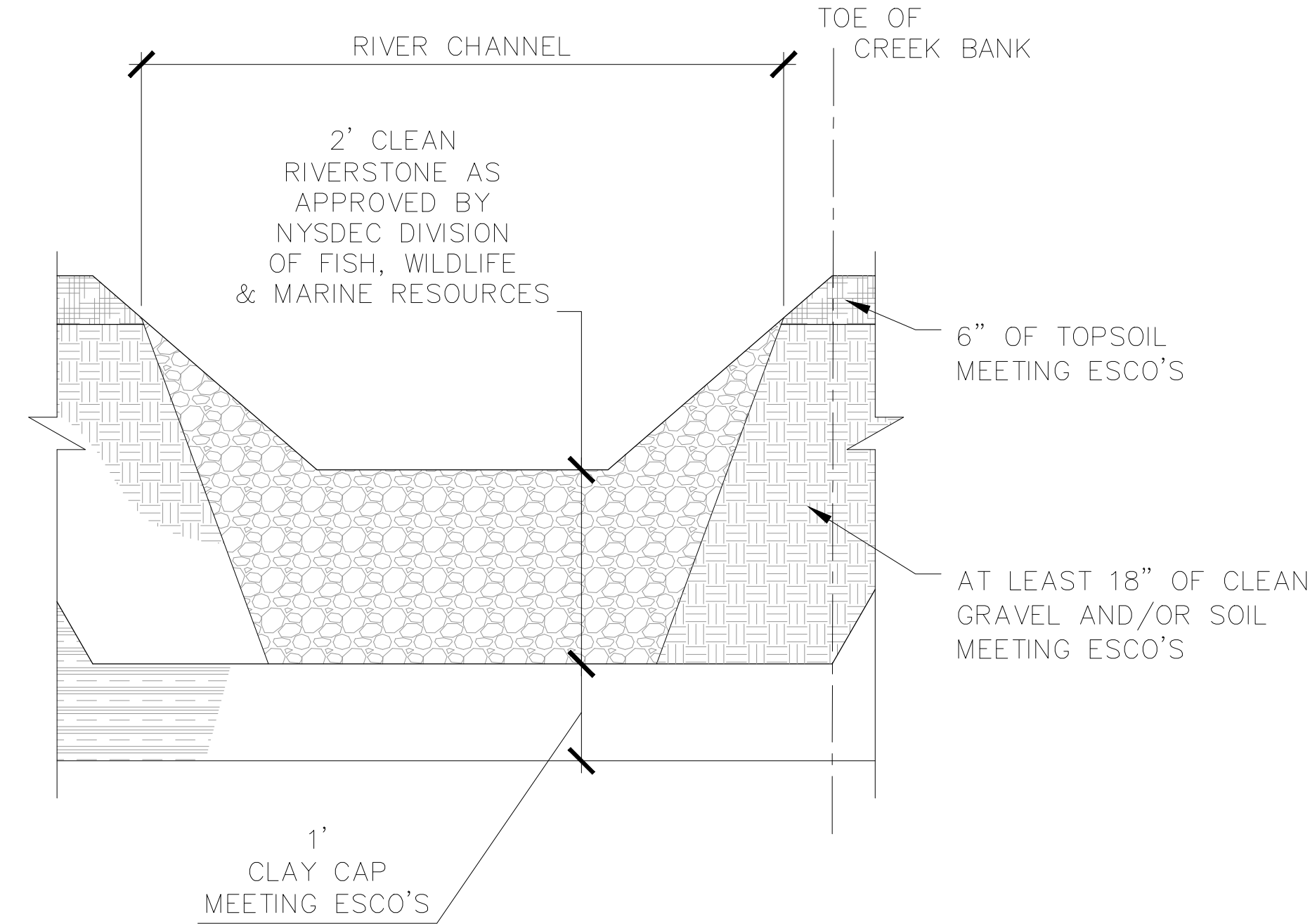
1
D-2



- NOTES:
1. CAPPING MATERIALS (GRAVEL AND TOP SOIL) MUST MEET SOIL COMMERCIAL CLEANUP OBJECTIVES (CSCO'S) FOR VOC, SVOC'S, PCB'S, AND METALS AS SET FORTH IN 6NYCRR PART 375-6.8(b).
 2. DEMARCATION LAYERS SHALL CONSIST OF NON WOVEN GEOTEXTILE FABRIC (MIRAFIX 140N) OR EQUIVALENT.

FORMER SETTLING PONDS TYPICAL SOIL COVER DETAIL

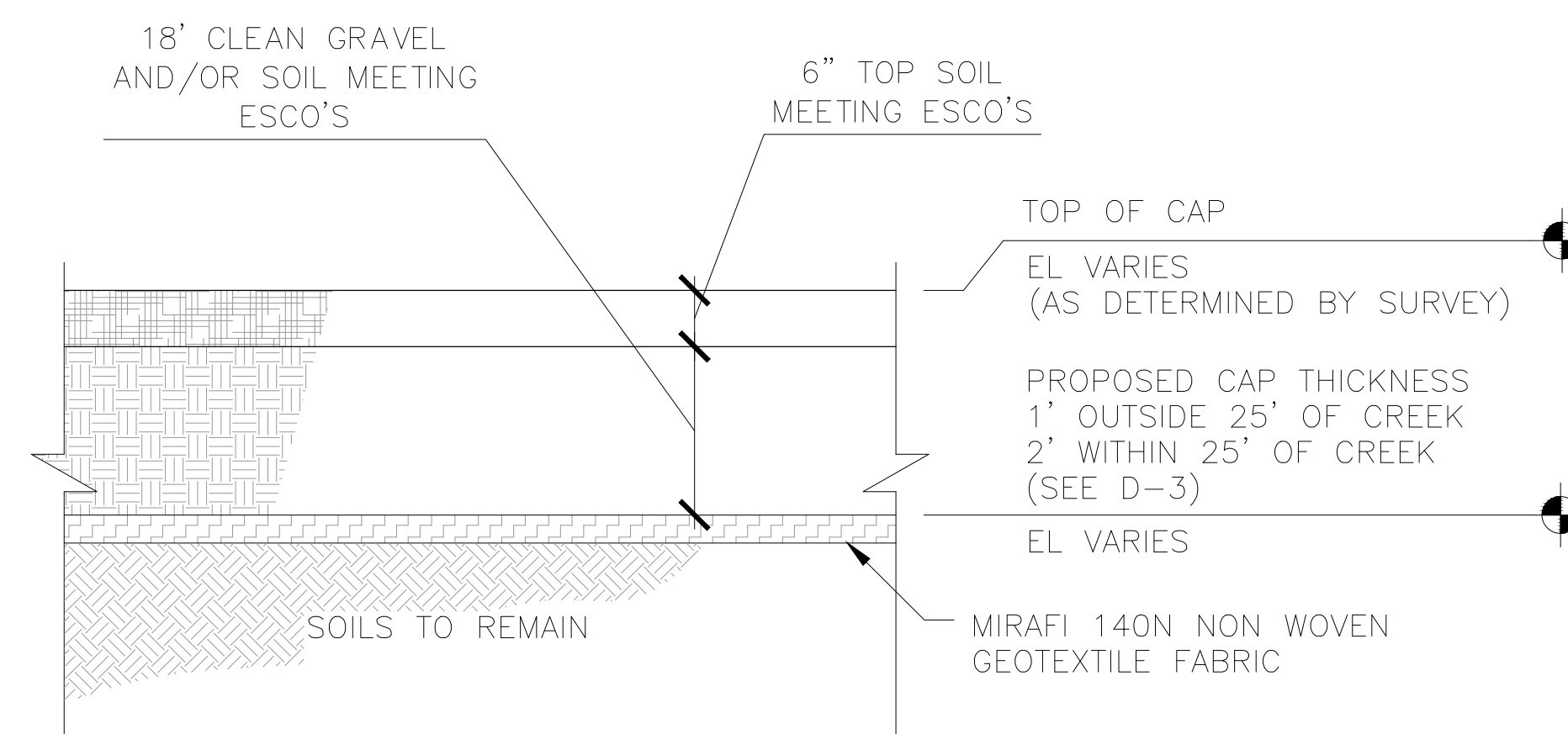
3
D-2



- NOTES:
1. CLAY CAP SOILS SHOULD HAVE A PLASTICITY INDEX OF 20-30%.
 2. BACKFILL SOILS UTILIZED TO RETURN GRADES TO PRE-CAP ELEVATIONS WILL CONSIST OF SAND AND/OR GRAVEL AND MEET ECOLOGICAL SCO'S IN TOP 2'.
 3. SOIL CAPS CONSTRUCTED WITHIN ECOLOGICAL AREAS AND WITHIN 100 YEAR FLOOD PLAIN ARE TO BE CONSTRUCTED TO PREEXISTING ELEVATIONS AS DETERMINED BY SURVEY.
 4. BEDDING MATERIALS SHALL CONSIST OF MATERIALS APPROVED BY NYSDEC DIVISION OF FISH, WILDLIFE & MARINE RESOURCES.

AEC-5 2012 CREEK COVER DETAIL TYPICAL CREEK RESTORATION

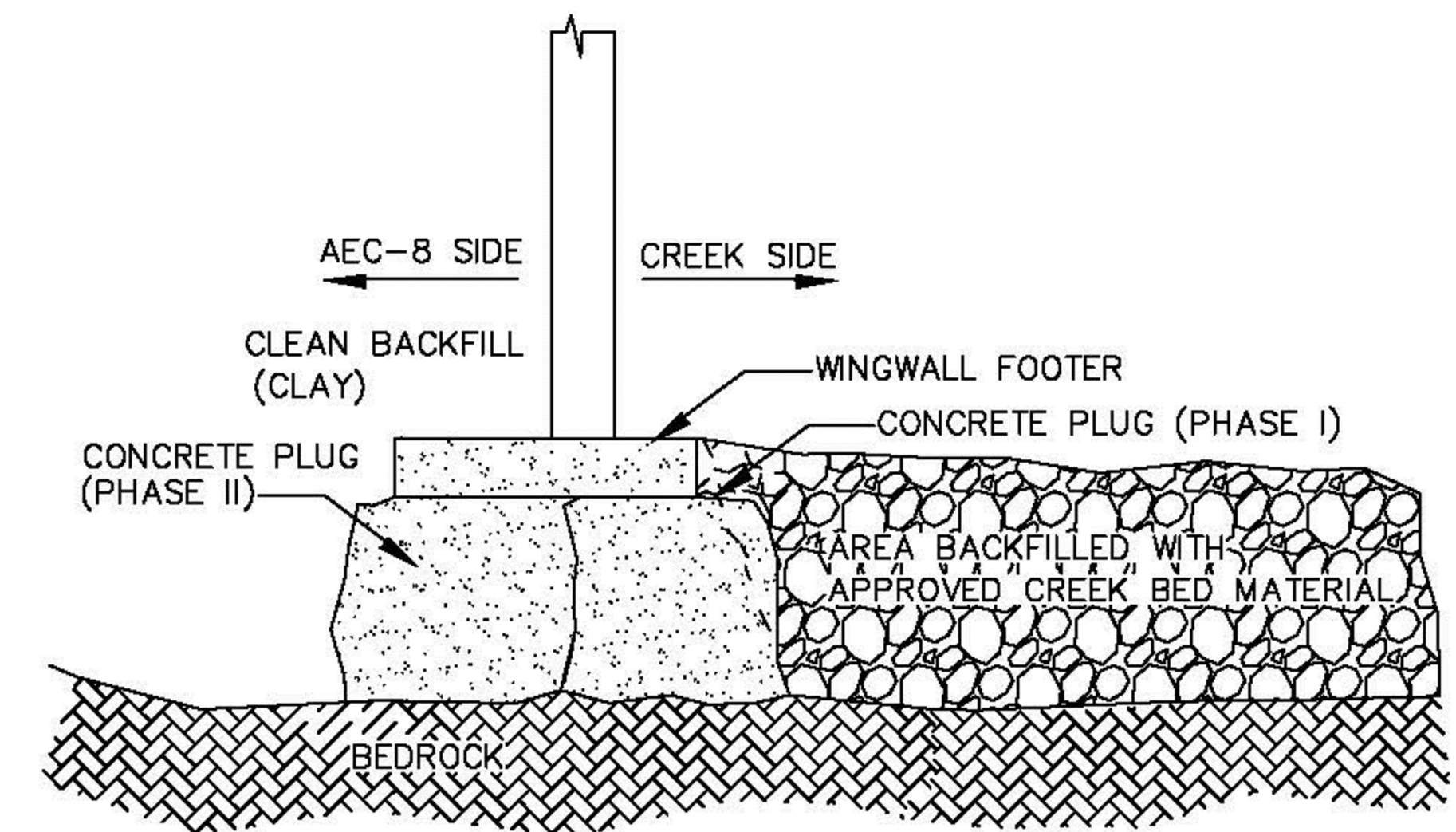
2
D-2



- NOTES:
1. CAPPING MATERIALS (GRAVEL AND TOP SOIL) MUST MEET ECOLOGICAL SOIL CLEANUP OBJECTIVES FOR VOC, SVOC'S, PCB'S, AND METALS AS SET FORTH IN 6NYCRR PART 375-6.8(b) WITHIN 25' OF CREEK AND COMMERCIAL SCO'S OUTSIDE 25'.
 2. EXCAVATION DEPTHS AND CAP THICKNESS VARIES AND IS DEPENDENT UPON LOCATION:
 - A. CAPS WITHIN 25' OF CREEK AREAS REQUIRE A (2) FOOT CAP WITH DEMARCATION LAYER AS SPECIFIED.
 - B. CAPS OUTSIDE 25' OF CREEK REQUIRE A (1) OR (2) FOOT CAP WITH DEMARCATION LAYER AS SPECIFIED.
 3. DEMARCATION LAYERS SHALL CONSIST OF NON WOVEN GEOTEXTILE FABRIC (MIRAFIX 140N) OR EQUIVALENT.
 4. SOIL CAPS CONSTRUCTED WITHIN 100 YEAR FLOOD PLAINS ARE TO BE RETURNED TO PREEXISTING ELEVATIONS AS DETERMINED BY SURVEY.

AEC-5 2012 CREEK BANK COVER DETAIL TYPICAL CREEK RESTORATION WITHIN 25 FT OF CREEK

4
D-2



WINGWALL SOIL REMOVAL DETAIL (PHASE II)

5
D-2