

(Fact Sheet Begins Next)

Act Now to Continue Receiving Information About This Site!

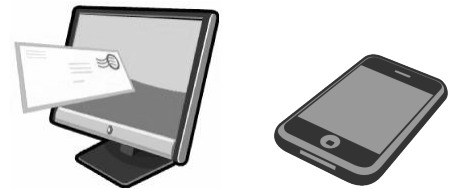
DEC's Division of Environmental Remediation (DER) now distributes information about contaminated sites *electronically by email*.

If you would like to continue to receive information about the contaminated site featured in this fact sheet:

You must sign up for the DER email listserv:

www.dec.ny.gov/chemical/61092.html

DER cannot register your email address - only the email address owner can do so. If you already have signed up for the listserv for the county in which the site is located, you need do nothing.



Why You Should Go “Paperless”:

- ☒ Get site information faster and share it easily;
- ☒ Receive information about all sites in a chosen county - read what you want, delete the rest;
- ☒ It helps the environment and stretches your tax dollars.

If “paperless” is not an option for you, call or write to the DER project manager identified in this fact sheet. Indicate that you need to receive paper copies of fact sheets through the Postal Service. Include the site name in your correspondence. The option to receive paper is available to individuals only. Groups, organizations, businesses, and government entities are assumed to have email access.



Department of
Environmental
Conservation

FACT SHEET

RCRA Corrective Action Program

Carrier Corporation
6304 Carrier Parkway
East Syracuse, NY 13057

January 2021

SITE No. 734043
NYSDEC REGION 7

Where to Find Information

Access project documents through the [DECinfo Locator](#) and at this location:

NYSDEC Region 7
615 Erie Blvd. West
Syracuse, NY 13204
(315) 426-7446

**Repositories may be temporarily unavailable due to COVID-19 precautions. If you cannot access the online repository, please contact the NYSDEC project manager listed below for assistance.*

Who to Contact

Comments and questions are welcome and should be directed as follows:

Project-Related Questions

Michael Belveg, Project Manager
NYSDEC
615 Erie Blvd. West
Syracuse, NY 13204
(315) 426-7446
Michael.Belveg@dec.ny.gov

Project-Related Health Questions

Mark Sergott
NYSDOH
Corning Tower
Empire State Plaza
Albany, NY 12237
(518) 402-7860
beei@health.ny.gov

For more information about New York's RCRA Corrective Action Program, visit: <https://www.dec.ny.gov/chemical/9057.html>

Expedited Cleanup Action at Carrier Corporation Site Proposed for Public Comment

The New York State Department of Environmental Conservation (NYSDEC), in consultation with the New York State Department of Health (NYSDOH), is proposing an expedited cleanup of contamination in the Sanders Creek corridor related to the Carrier Corporation site ("site") located at 6304 Carrier Parkway, East Syracuse, Onondaga County. Please see the map below for the site location.

NYSDEC is conducting a public comment period because this interim corrective measure (ICM) is likely to represent a significant part of the site's ongoing cleanup to protect public health and the environment. The expedited cleanup activities associated with the ICM are expected to begin in summer 2021 and last approximately two years. The activities will be performed by Carrier Corporation ("remedial party") to address contamination by volatile organic compounds (VOCs) and polychlorinated biphenyls (PCBs) with oversight provided by NYSDEC. Carrier is legally obligated via an Order on Consent with NYSDEC to perform the necessary cleanup actions.

How to Comment: NYSDEC is accepting written comments about the proposed cleanup plan for 30 days, from **January 14** through **February 14, 2021**

- Access the Draft ICM Work Plan and other project documents, including additional work plans and reports, online through the DECinfo Locator: <https://www.dec.ny.gov/data/DecDocs/734043/>.
- Documents also are available at the location identified at left under "Where to Find Information."
- Please submit comments to the NYSDEC project manager listed under Project-Related Questions in the "Who to Contact" area at left.

The Carrier Corporation site is listed as a class 2 site in the State Registry of Hazardous Waste sites. A class 2 site represents a significant threat to public health or the environment and action is required. This site is designated a Resource Conservation and Recovery Act (RCRA) Corrective Action site as well as a State Superfund site. More information about these classifications is provided below.

Draft Interim Corrective Measure (ICM) Work Plan: An ICM is a cleanup activity that may be performed when a source of contamination or exposure pathway (the way in which a person may contact contamination) can be effectively addressed without additional extensive investigation and evaluation. This proposed ICM meets the state's stringent requirements for both a RCRA Corrective Action site and a State Superfund site.

RCRA CORRECTIVE ACTION

The draft ICM work plan for public review describes the proposed cleanup activities that include:

- Excavation and off-site disposal of contaminated soil and sediment from the Sanders Creek corridor to approximately 3 feet below surface grade for approximately one mile, beginning adjacent to the Carrier Corporation property and continuing westward downstream to the Ley Creek (south branch) confluence;
- Collection and analysis of end-point soil and sediment samples;
- Backfilling with clean material that meets the established soil cleanup objectives;
- Implementation of a Health and Safety Plan and Community Air Monitoring Plan during all ground intrusive activities; and
- Implementation of an Interim Site Management Plan including post-remedial surface water and biota samples to evaluate the effectiveness of the remedy.

Next Steps: NYSDEC will consider public comments, revise the plan as necessary, and approve the ICM work plan in consultation with the New York State Department of Health. The approved work plan will be made available to the public (see “Where to Find Information” on front page).

Upon completion of the expedited cleanup activities, a Construction Completion Report will be prepared that documents the activities performed.

NYSDEC will keep the public informed throughout the investigation and cleanup of the site.

Site Description: The 175-acre site is bordered on the west by Thompson Road, on the south by a residential area, on the north by NYS Route 298, and on the east by Kinne Street. The site is developed and primarily paved with asphalt, with other areas covered by manufacturing and office buildings or open grass areas on top of former slabs of demolished buildings. The facility is still actively performing research for heating, ventilation, and air conditioning applications. Previous industrial activities at the Carrier facility have resulted in contamination of Sanders Creek. Sanders Creek runs through the northern portion of the site and flows westerly for about one mile until it merges with Ley Creek. The Sanders Creek corridor is a mix of developed and wooded areas.

Summary of the Investigation: The primary contaminants of concern within the Sanders Creek area of the site, which is the area subject to this proposed ICM, are: volatile organic compounds (VOCs) and polychlorinated biphenyls (PCBs). VOCs and PCBs are present in soil, sediment, surface water, and groundwater within and near Sanders Creek.

Additional site details, including environmental and health assessment summaries, are available on NYSDEC's Environmental Site Remediation Database (by entering the site ID, 734043) at:

<https://www.dec.ny.gov/cfm/externalapps/derexternal/index.cfm?pageid=3>

RCRA Corrective Action Program: New York State's RCRA Corrective Action Program addresses known or suspected environmental releases at hazardous waste management facilities. Sites that pose a significant threat to public health and/or the environment go through a process of investigation, evaluation, cleanup, and monitoring.

State Superfund Program: New York's State Superfund Program identifies and characterizes suspected inactive hazardous waste disposal sites. Sites that pose a significant threat to public health and/or the environment go through a process of investigation, evaluation, cleanup, and monitoring.

For more information about the RCRA Corrective Action Program, visit:

<https://www.dec.ny.gov/chemical/9057.html>

We encourage you to share this fact sheet with neighbors and tenants, and/or post this fact sheet in a prominent area of your building for others to see.

Stay Informed With DEC Delivers

Sign up to receive site updates by email:

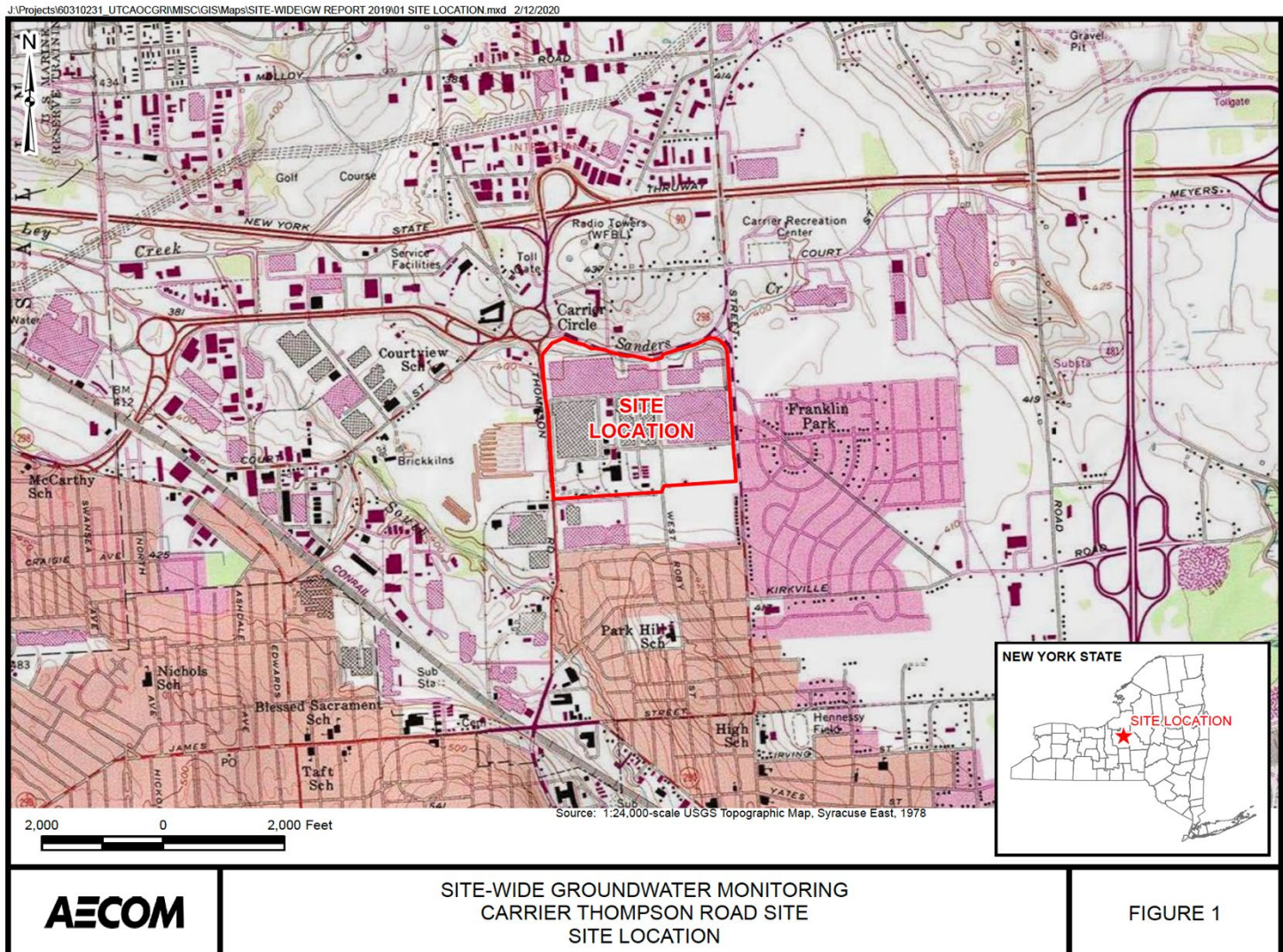
www.dec.ny.gov/chemical/61092.html

Note: Please disregard if you already have signed up and received this fact sheet electronically.

DECinfo Locator

Interactive map to access DEC documents and public data about the environmental quality of specific sites: <https://www.dec.ny.gov/pubs/109457.html>

Site Location



RCRA CORRECTIVE ACTION

Sanders Creek Corridor

