

**VOLNEY LANDFILL  
VOLNEY, NEW YORK**

**FINAL REMEDIAL ACTION REPORT  
FOR OPERABLE UNIT 1 (OU-1)  
REMEDIAL WORK ELEMENT 1 (RWE 1)**

**FEBRUARY, 2002**

**Barton  
& Loguidice, P.C.**  
*Consulting Engineers*

**290 Elwood Davis Road  
Box 3107  
Syracuse, New York 13220**

## CERTIFICATIONS

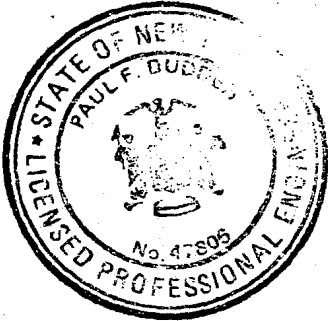
### Professional Engineer Certification

Barton & Loguidice, P.C. certifies that to the best of our knowledge and belief, the Remedial Work Element 1 - Volney Landfill, has been constructed in substantial compliance with the Consent Decree, ROD, and the Plans, Specifications and Change Orders approved thereunder.

Paul F. Dudden

Paul F. Dudden  
Registered Professional Engineer

2/15/02  
Date



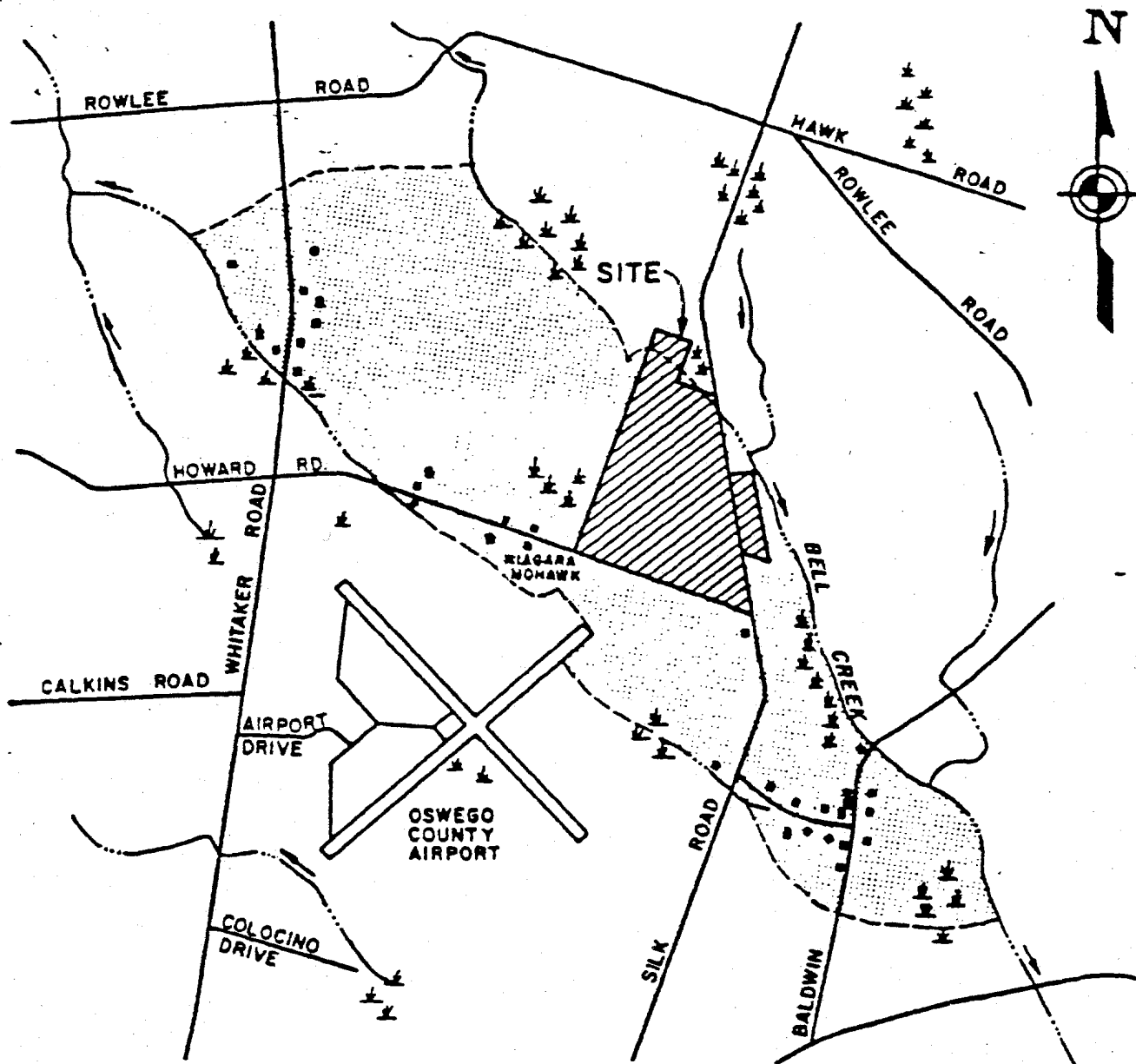
### Project Coordinator Certification

To the best of my knowledge, after thorough investigation, I certify that the information contained in or accompanying this submission is true, accurate and complete. I am aware that there are significant penalties for submitting false information, including the possibility of fine and imprisonment for knowing violations.

Andrew J. Barber

Andrew J. Barber  
Project Coordinator for the Owner Settling Defendant  
Volney Landfill

2/15/02  
Date



### LEGEND

- AREA OF GROUNDWATER POTENTIALLY AFFECTED BY LANDFILL
- STREAM
- RESIDENCE
- MOBILE HOME
- FARM BUILDING

SCALE  
1000 0 1000 FEET

**URS**

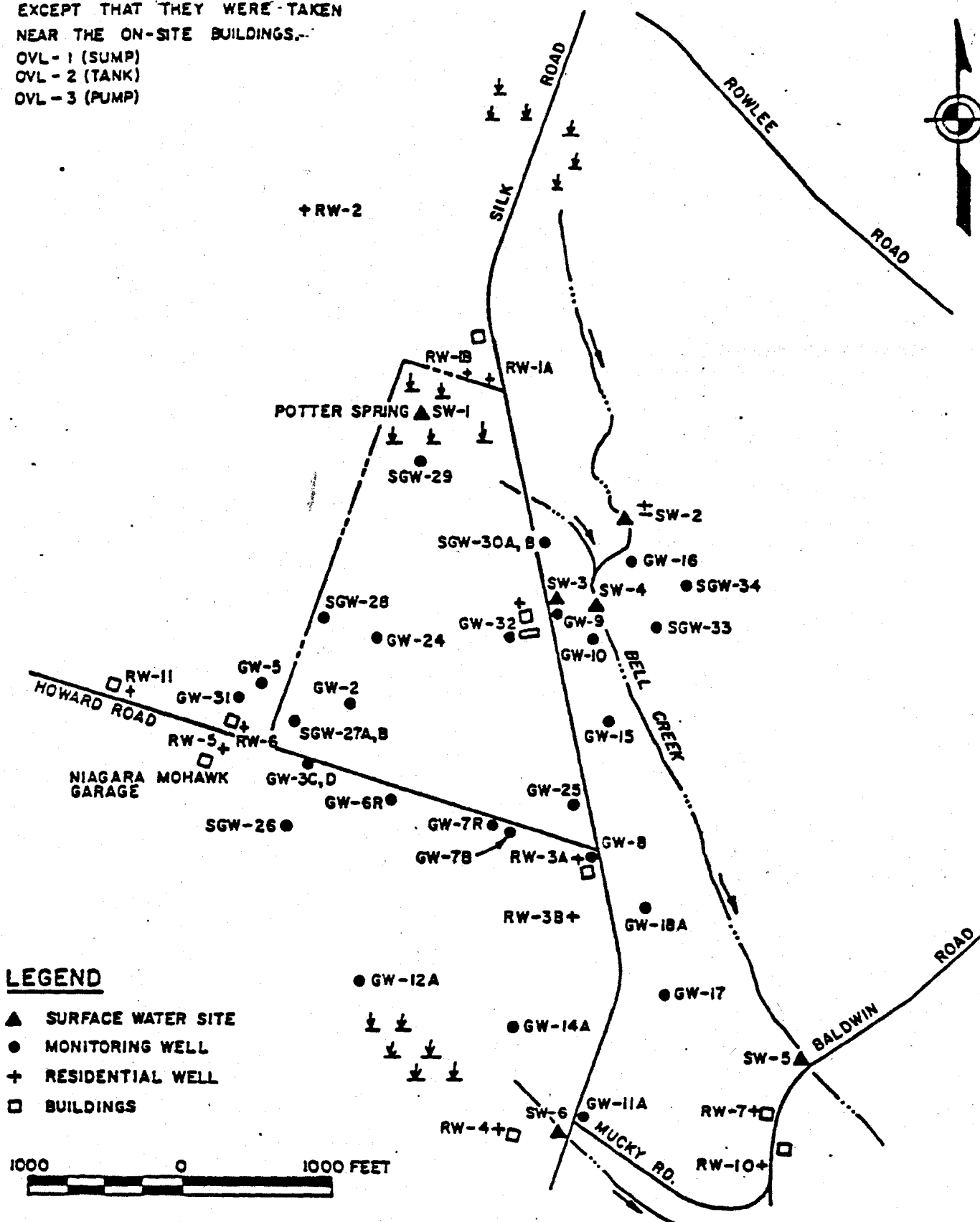
URS Company, Inc.  
CONSULTING ENGINEERS  
NEW YORK NEW JERSEY

POTENTIAL GROUNDWATER  
RECEPTORS

FIGURE 3

NOTE: THE EXACT LOCATION OF THE FOLLOWING SAMPLES IS UNKNOWN, EXCEPT THAT THEY WERE TAKEN NEAR THE ON-SITE BUILDINGS.

OVL-1 (SUMP)  
OVL-2 (TANK)  
OVL-3 (PUMP)



**URS**

URS Company, Inc.  
CONSULTING ENGINEERS  
NEW YORK NEW JERSEY

PREVIOUS INVESTIGATION  
SAMPLING LOCATIONS

FIGURE 5

TABLE 1  
GROUNDWATER SUBSTANCES AND PARAMETERS  
EXCEEDING STANDARDS AND GUIDELINES

Substance	Max Conc. (ug/l)	Exceeded Enforceable Limit		
		Conc. (ug/l)	Source *	No. Samples/ Total Samples
Vinyl Chloride	5.8	1	MCL	1/24
Benzene	3.5	not detectable	703.5	2/24
Arsenic	85	25	703.5	1/20
Selenium	16	10	141.1(MCL)	5/20
Total Phenols	13	1	703.5	8/20
pH (Min)	6.31	6.5	170.4	1/22
TDS	880 mg/l	500 mg/l	170.4	4/18

Substance	Max Conc. (ug/l)	Exceeded Guideline		
		Conc. (ug/l)	Source	No. Samples/ Total Samples
Chloroform	70	0	CWA	1/24
Vinyl Chloride	5.8	0	RMCL	1/24
Benzene	3.5	0	RMCL	2/24
Trichloroethene	3.4	0	RMCL	7/24
Tetrachloroethene	0.62	0	RMCL	1/24
Arsenic	85	0	CWA	5/20
Beryllium	5	0	CWA	7/20
Nickel	75	15.4	CWA	8/20
TDS	880 mg/l	500 mg/l	143.3	4/18

\* See Table 2 for explanation of sources