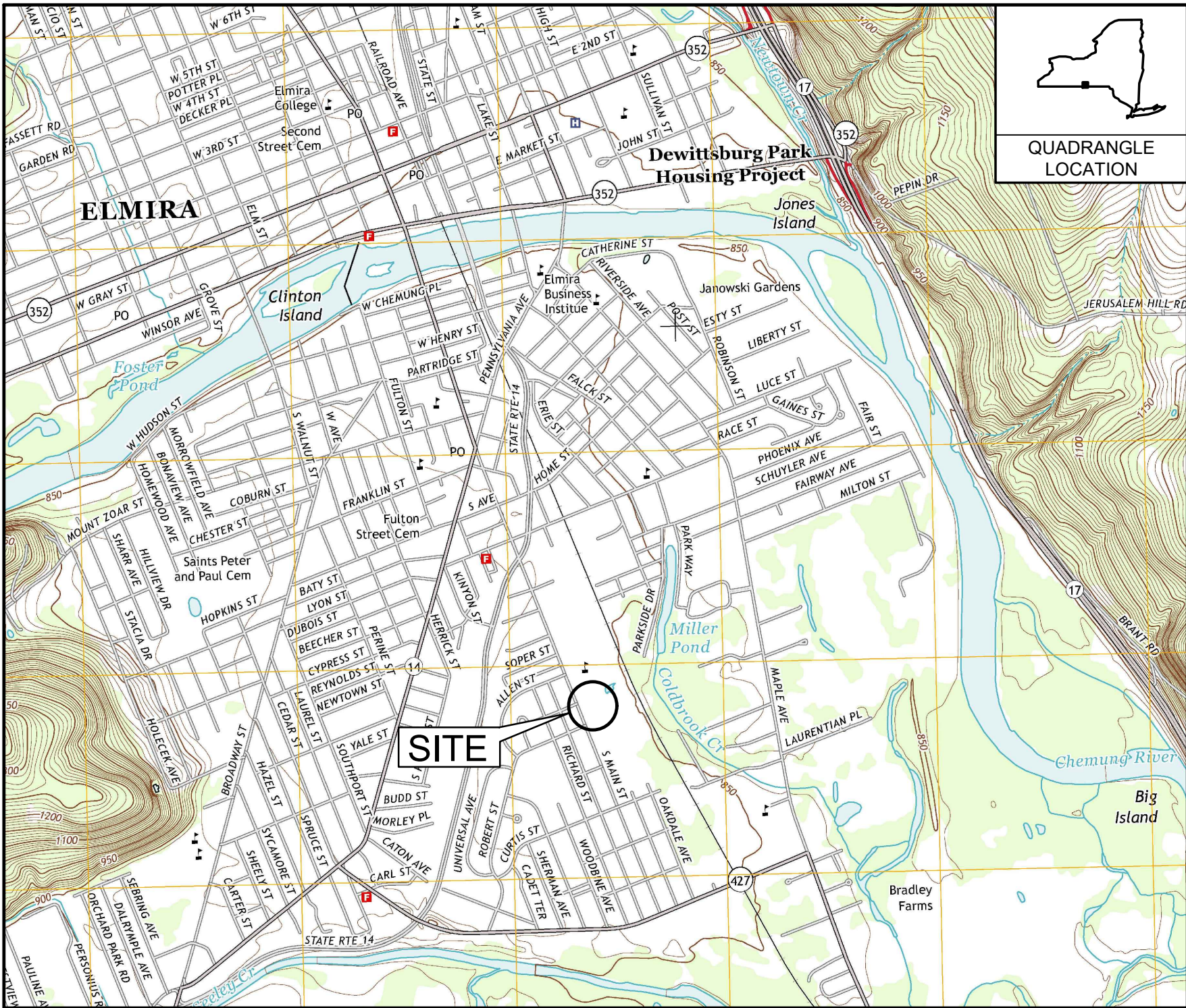


INTERIM REMEDIATION MEASURE

FORMER SCOTT TECHNOLOGIES

ELMIRA, NEW YORK

MAY 2020

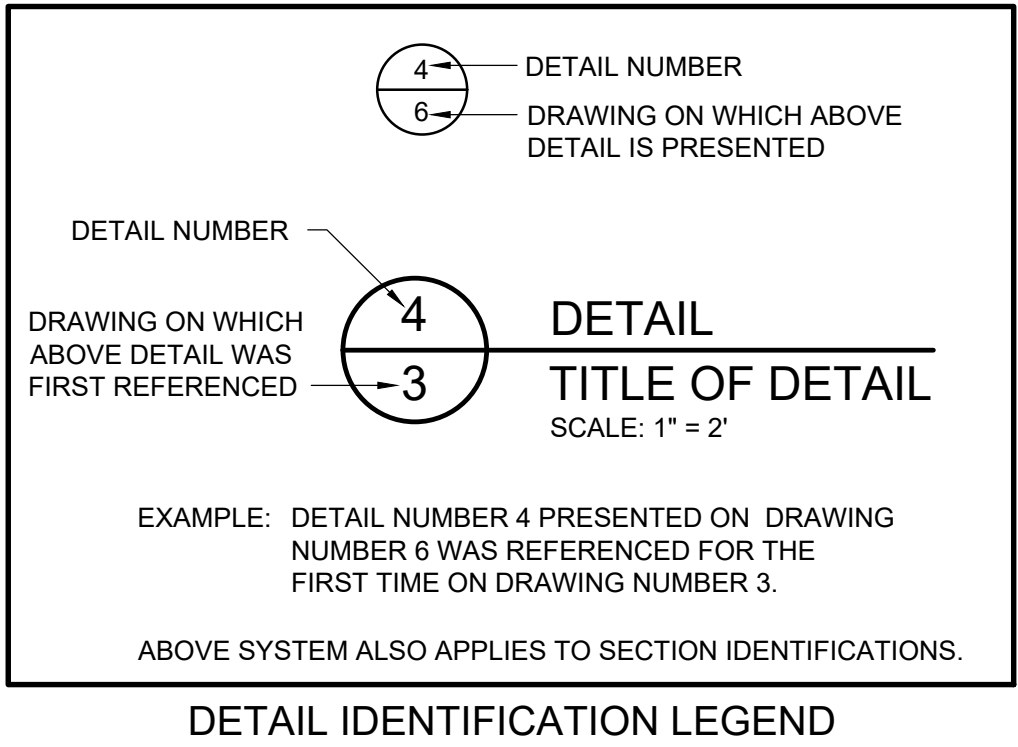


LOCATION MAP

| LIST OF DRAWINGS | |
|------------------|---------------------------------------|
| NUMBER | TITLE |
| 1 | TITLE SHEET |
| 2 | EXISTING CONDITIONS |
| 3 | SITE PLAN |
| 4 | EXCAVATION PLAN |
| 5 | MATERIAL STAGING AREA PLAN (MSA) PLAN |
| 6 | EQUIPMENT WASH PAD |
| 7 | EROSION AND SEDIMENT CONTROL PLAN |
| 8 | EROSION AND SEDIMENT CONTROL DETAILS |

PREPARED FOR: **UNISYS CORPORATION**
CORPORATE ENVIRONMENTAL AFFAIRS
3199 PILOT KNOB ROAD MS F1B05
EAGAN, MN 55121

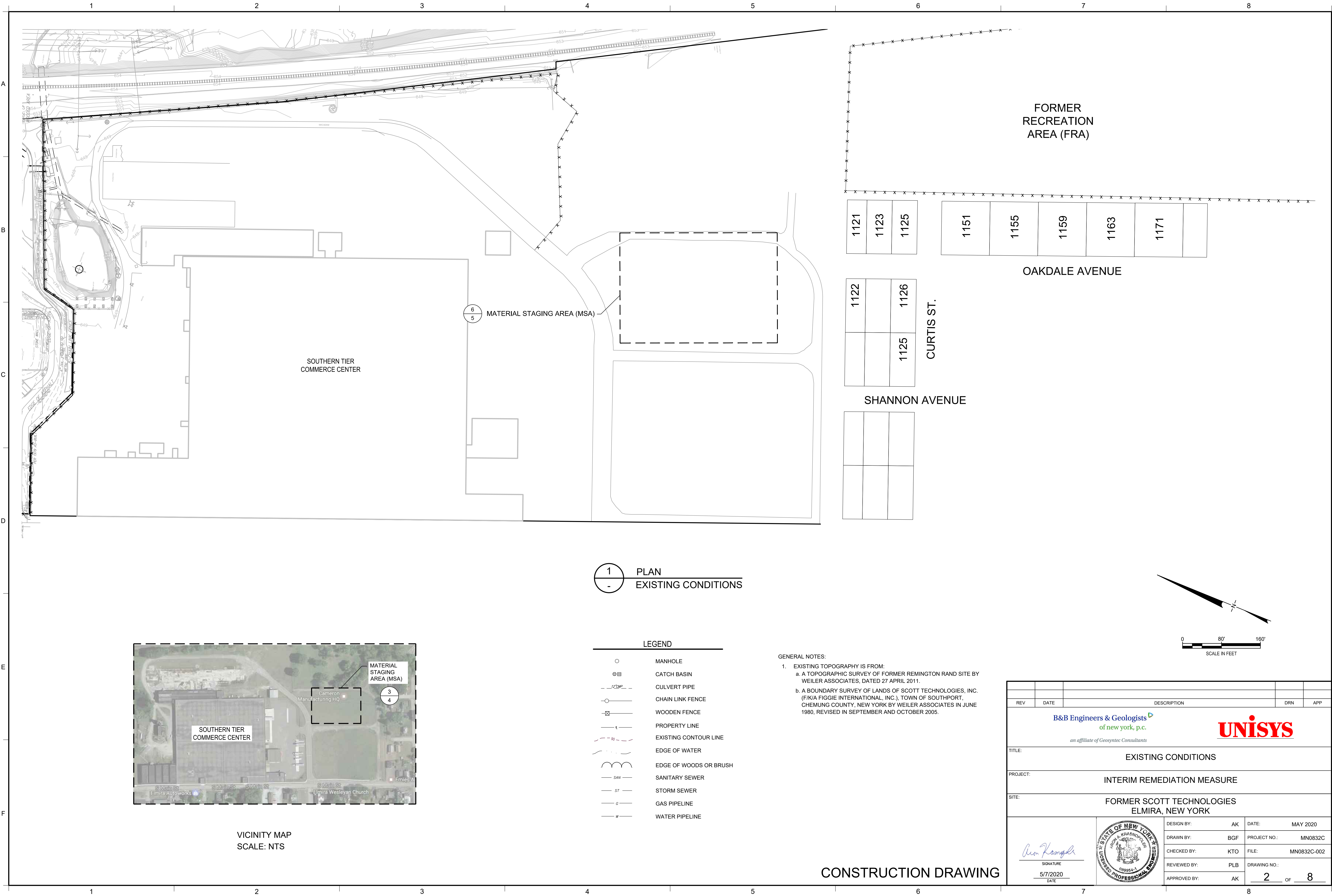
PREPARED BY: **B&B Engineers & Geologists
of new york, p.c.**
an affiliate of Geosyntec Consultants
10211 WINCOPIN CIRCLE, FLOOR 4
COLUMBIA, MD 20144
PHONE: (410) 381-4333



CONSTRUCTION DRAWING

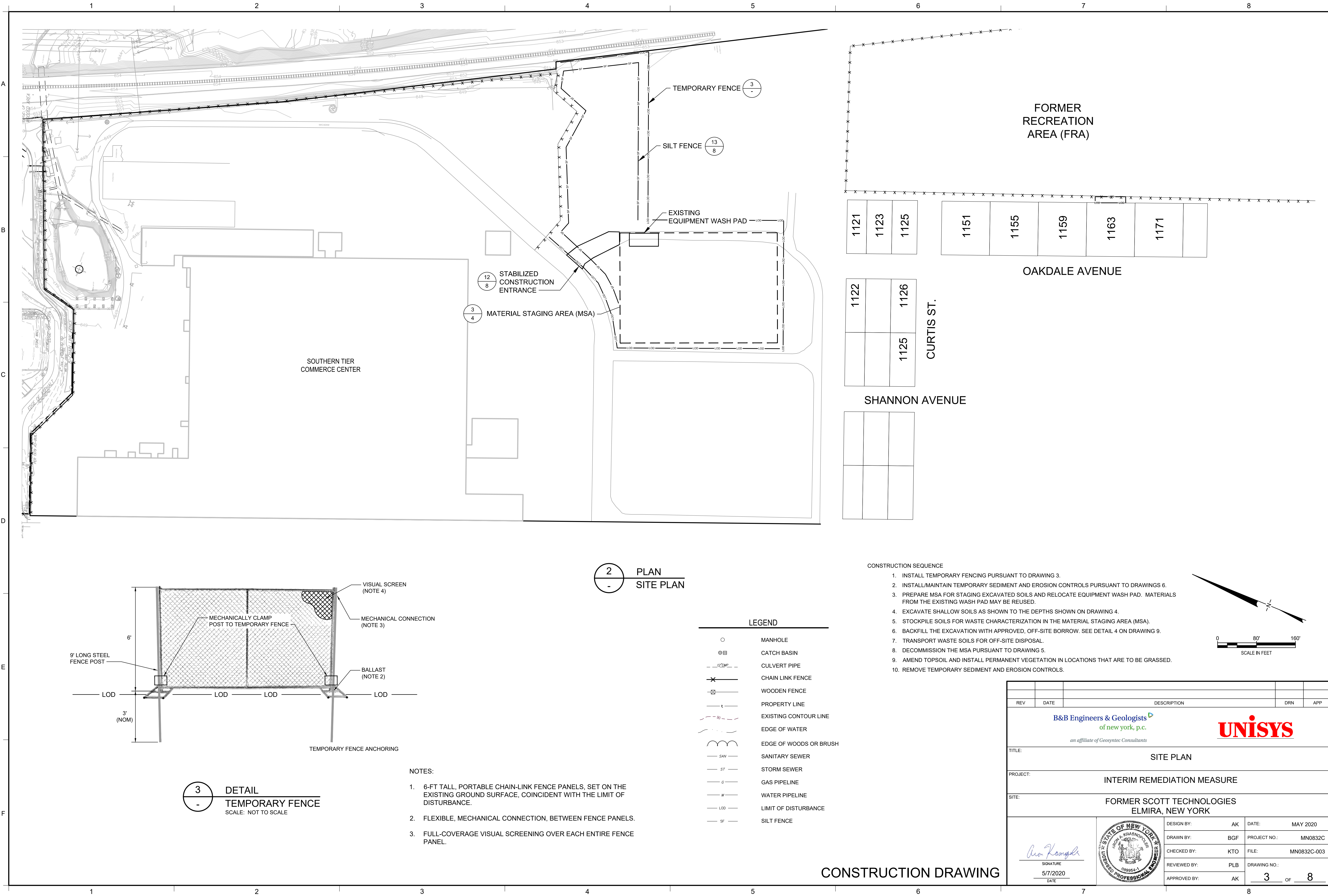
| | | | | |
|---|------|---|-----|-----|
| REV | DATE | DESCRIPTION | DRN | APP |
| B&B Engineers & Geologists of new york, p.c. <i>an affiliate of Geosyntec Consultants</i> | | | | |
| UNISYS | | | | |
| TITLE: TITLE SHEET | | | | |
| PROJECT: INTERIM REMEDIATION MEASURE | | | | |
| SITE: FORMER SCOTT TECHNOLOGIES ELMIRA, NEW YORK | | | | |
| SIGNATURE 5/7/2020 DATE | | DESIGN BY: AK DATE: MARCH 2020 DRAWN BY: BGF PROJECT NO.: MN0832C CHECKED BY: KTO FILE: MN0832C-001 REVIEWED BY: PLB DRAWING NO.: APPROVED BY: AK | | |
| | | 1 OF 8 | | |

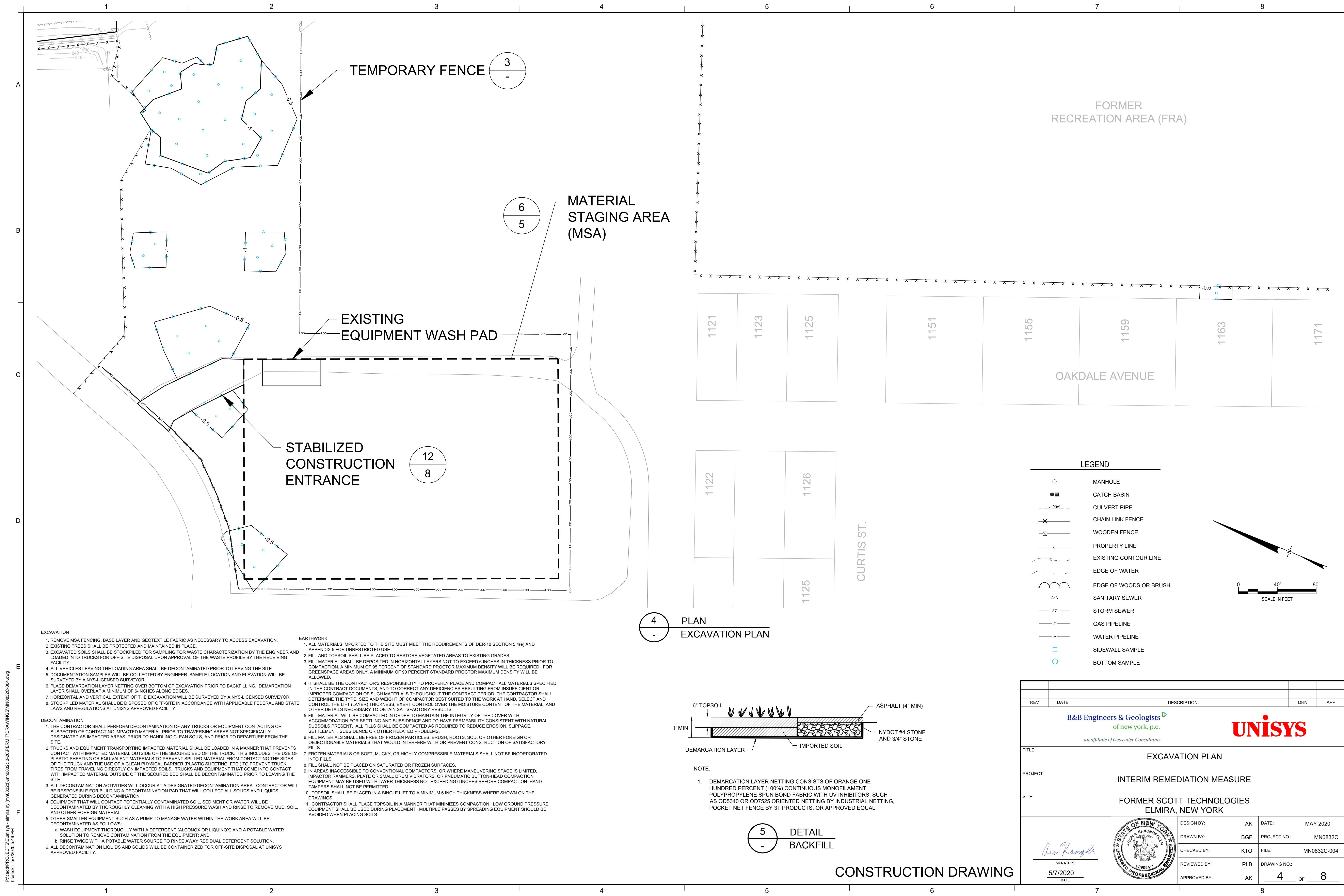
p:\cadd\PROJECTS\Elmira - elmira ny (mo0832c)\mo0832c-3-20\PERMIT\DRAWINGS\MN0832C-002.dwg
blierak - 5/7/2020 4:18 PM



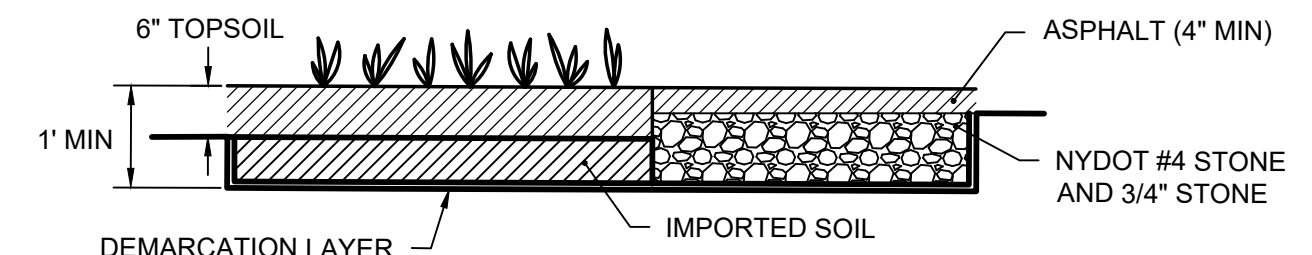
CONSTRUCTION DRAWING

p:\cadd\PROJECTS\Elmira - Elmira ny (mn0832c)\mn0832c-3-20\PERMIT\DRAWINGS\MN0832C-003.dwg
b:\erik - 5/7/2020 4:19 PM





4 PLAN EXCAVATION PLAN



- NOTE:
- DEMARCATION LAYER NETTING CONSISTS OF ORANGE ONE HUNDRED PERCENT (100%) CONTINUOUS MONOFILAMENT POLYPROPYLENE SPUN BOND FABRIC WITH UV INHIBITORS, SUCH AS OD5340 OR OD7525 ORIENTED NETTING BY INDUSTRIAL NETTING, POCKET NET FENCE BY 3T PRODUCTS, OR APPROVED EQUAL.

5 DETAIL BACKFILL

CONSTRUCTION DRAWING

P:\cadd\PROJECTS\Elunsys - elmira ny (mn0832c)\mn0832c-3-20\PERMIT\DRAWINGS\MN0832C-004.dwg
blierak - 5/7/2020 5:49 PM

- EXCAVATION**
- REMOVE MSA FENCING, BASE LAYER AND GEOTEXTILE FABRIC AS NECESSARY TO ACCESS EXCAVATION.
 - EXISTING TREES SHALL BE PROTECTED AND MAINTAINED IN PLACE.
 - EXCAVATED SOILS SHALL BE STOCKPILED FOR SAMPLING FOR WASTE CHARACTERIZATION BY THE ENGINEER AND LOADED INTO TRUCKS FOR OFF-SITE DISPOSAL UPON APPROVAL OF THE WASTE PROFILE BY THE RECEIVING FACILITY.
 - ALL VEHICLES LEAVING THE LOADING AREA SHALL BE DECONTAMINATED PRIOR TO LEAVING THE SITE.
 - DOCUMENTATION SAMPLES WILL BE COLLECTED BY ENGINEER. SAMPLE LOCATION AND ELEVATION WILL BE SURVEYED BY A NYS-LICENSED SURVEYOR.
 - PLACE DEMARCATION LAYER NETTING OVER BOTTOM OF EXCAVATION PRIOR TO BACKFILLING. DEMARCATION LAYER SHALL OVERLAP A MINIMUM OF 6-INCHES ALONG EDGES.
 - HORIZONTAL AND VERTICAL EXTENT OF THE EXCAVATION WILL BE SURVEYED BY A NYS-LICENSED SURVEYOR.
 - STOCKPILED MATERIAL SHALL BE DISPOSED OF OFF-SITE IN ACCORDANCE WITH APPLICABLE FEDERAL AND STATE LAWS AND REGULATIONS AT UNISYS APPROVED FACILITY.
- DECONTAMINATION**
- THE CONTRACTOR SHALL PERFORM DECONTAMINATION OF ANY TRUCKS OR EQUIPMENT CONTACTING OR SUSPECTED OF CONTACTING IMPACTED MATERIAL PRIOR TO TRAVERSING AREAS NOT SPECIFICALLY DESIGNATED AS IMPACTED AREAS, PRIOR TO HANDLING CLEAN SOILS, AND PRIOR TO DEPARTURE FROM THE SITE.
 - TRUCKS AND EQUIPMENT TRANSPORTING IMPACTED MATERIAL SHALL BE LOADED IN A MANNER THAT PREVENTS CONTACT WITH IMPACTED MATERIAL OUTSIDE OF THE SECURED BED OF THE TRUCK. THIS INCLUDES THE USE OF PLASTIC SHEETING OR EQUIVALENT MATERIALS TO PREVENT SPILLED MATERIAL FROM CONTACTING THE SIDES OF THE TRUCK AND THE USE OF A CLEAN PHYSICAL BARRIER (PLASTIC SHEETING, ETC.) TO PREVENT TRUCK TIRES FROM TRAVELING DIRECTLY ON IMPACTED SOILS. TRUCKS AND EQUIPMENT THAT COME INTO CONTACT WITH IMPACTED MATERIAL OUTSIDE OF THE SECURED BED SHALL BE DECONTAMINATED PRIOR TO LEAVING THE SITE.
 - ALL DECONTAMINATION ACTIVITIES WILL OCCUR AT A DESIGNATED DECONTAMINATION AREA. CONTRACTOR WILL BE RESPONSIBLE FOR BUILDING A DECONTAMINATION PAD THAT WILL COLLECT ALL SOLIDS AND LIQUIDS GENERATED DURING DECONTAMINATION.
 - EQUIPMENT THAT WILL CONTACT POTENTIALLY CONTAMINATED SOIL, SEDIMENT OR WATER WILL BE DECONTAMINATED BY THOROUGHLY CLEANING WITH A HIGH PRESSURE WASH AND RINSE TO REMOVE MUD, SOIL, AND OTHER FOREIGN MATERIAL.
 - OTHER SMALLER EQUIPMENT SUCH AS A PUMP TO MANAGE WATER WITHIN THE WORK AREA WILL BE DECONTAMINATED AS FOLLOWS:
 - WASH EQUIPMENT THOROUGHLY WITH A DETERGENT (ALCONOX OR LIQUINOX) AND A POTABLE WATER SOLUTION TO REMOVE CONTAMINATION FROM THE EQUIPMENT; AND
 - RINSE TWICE WITH A POTABLE WATER SOURCE TO RINSE AWAY RESIDUAL DETERGENT SOLUTION.
 - ALL DECONTAMINATION LIQUIDS AND SOLIDS WILL BE CONTAINERIZED FOR OFF-SITE DISPOSAL AT UNISYS APPROVED FACILITY.
- EARTHWORK**
- ALL MATERIALS IMPORTED TO THE SITE MUST MEET THE REQUIREMENTS OF DER-10 SECTION 5.4(e) AND APPENDIX 5 FOR UNRESTRICTED USE.
 - FILL AND TOPSOIL SHALL BE PLACED TO RESTORE VEGETATED AREAS TO EXISTING GRADES.
 - FILL MATERIAL SHALL BE DEPOSITED IN HORIZONTAL LAYERS NOT TO EXCEED 6 INCHES IN THICKNESS PRIOR TO COMPACTION. A MINIMUM OF 95 PERCENT OF STANDARD PROCTOR MAXIMUM DENSITY WILL BE REQUIRED. FOR GREENSPACE AREAS ONLY, A MINIMUM OF 90 PERCENT STANDARD PROCTOR MAXIMUM DENSITY WILL BE ALLOWED.
 - IT SHALL BE THE CONTRACTOR'S RESPONSIBILITY TO PROPERLY PLACE AND COMPACT ALL MATERIALS SPECIFIED IN THE CONTRACT DOCUMENTS, AND TO CORRECT ANY DEFICIENCIES RESULTING FROM INSUFFICIENT OR IMPROPER COMPACTION OF SUCH MATERIALS THROUGHOUT THE CONTRACT PERIOD. THE CONTRACTOR SHALL DETERMINE THE TYPE, SIZE AND WEIGHT OF COMPACTOR BEST SUITED TO THE WORK AT HAND, SELECT AND CONTROL THE LIFT (LAYER) THICKNESS, EXERT CONTROL OVER THE MOISTURE CONTENT OF THE MATERIAL, AND OTHER DETAILS NECESSARY TO OBTAIN SATISFACTORY RESULTS.
 - FILL MATERIAL WILL BE COMPACTED IN ORDER TO MAINTAIN THE INTEGRITY OF THE COVER WITH ACCOMMODATION FOR SETTLING AND SUBSIDENCE AND TO HAVE PERMEABILITY CONSISTENT WITH NATURAL SUBSOILS PRESENT. ALL FILLS SHALL BE COMPACTED AS REQUIRED TO REDUCE EROSION, SLIPPAGE, SETTLEMENT, SUBSIDENCE OR OTHER RELATED PROBLEMS.
 - FILL MATERIALS SHALL BE FREE OF FROZEN PARTICLES, BRUSH, ROOTS, SOD, OR OTHER FOREIGN OR OBJECTIONABLE MATERIALS THAT WOULD INTERFERE WITH OR PREVENT CONSTRUCTION OF SATISFACTORY FILLS.
 - FROZEN MATERIALS OR SOFT, MUCKY, OR HIGHLY COMPRESSIBLE MATERIALS SHALL NOT BE INCORPORATED INTO FILLS.
 - FILL SHALL NOT BE PLACED ON SATURATED OR FROZEN SURFACES.
 - IN AREAS INACCESSIBLE TO CONVENTIONAL COMPACTORS, OR WHERE MANEUVERING SPACE IS LIMITED, IMPACTOR RAMMERS, PLATE OR SMALL DRUM VIBRATORS, OR PNEUMATIC BUTTON-HEAD COMPACTION EQUIPMENT MAY BE USED WITH LAYER THICKNESS NOT EXCEEDING 6 INCHES BEFORE COMPACTION. HAND TAMPERS SHALL NOT BE PERMITTED.
 - TOPSOIL SHALL BE PLACED IN A SINGLE LIFT TO A MINIMUM 6 INCH THICKNESS WHERE SHOWN ON THE DRAWINGS.
 - CONTRACTOR SHALL PLACE TOPSOIL IN A MANNER THAT MINIMIZES COMPACTION. LOW GROUND PRESSURE EQUIPMENT SHALL BE USED DURING PLACEMENT. MULTIPLE PASSES BY SPREADING EQUIPMENT SHOULD BE AVOIDED WHEN PLACING SOILS.

LEGEND

- MANHOLE
- CATCH BASIN
- CULVERT PIPE
- CHAIN LINK FENCE
- WOODEN FENCE
- PROPERTY LINE
- EXISTING CONTOUR LINE
- EDGE OF WATER
- EDGE OF WOODS OR BRUSH
- SANITARY SEWER
- STORM SEWER
- GAS PIPELINE
- WATER PIPELINE
- SIDEWALL SAMPLE
- BOTTOM SAMPLE

0 40' 80'

SCALE IN FEET

| | | | | |
|-----|------|-------------|-----|-----|
| REV | DATE | DESCRIPTION | DRN | APP |
| | | | | |

B&B Engineers & Geologists
of new york, p.c.
an affiliate of Geosynec Consultants

UNISYS

TITLE: EXCAVATION PLAN

PROJECT: INTERIM REMEDIATION MEASURE

SITE: FORMER SCOTT TECHNOLOGIES
ELMIRA, NEW YORK

5/7/2020

SIGNATURE

DATE

AK

BGF

KTO

PLB

AK

DATE

PROJECT NO.

FILE

DRAWING NO.

DESIGN BY: AK

DRAWN BY: BGF

CHECKED BY: KTO

REVIEWED BY: PLB

APPROVED BY: AK

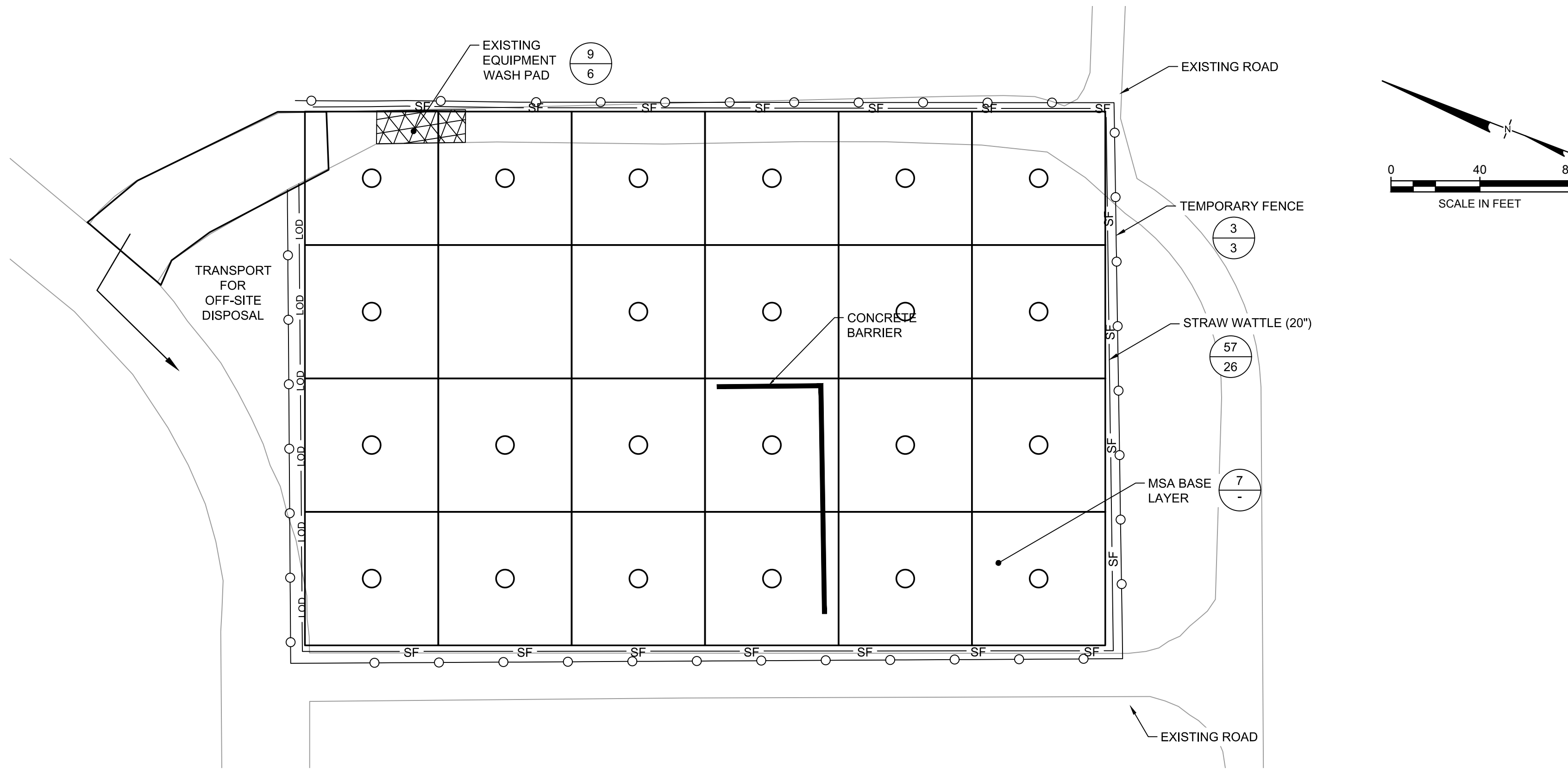
DATE: MAY 2020

PROJECT NO.: MN0832C

FILE: MN0832C-004

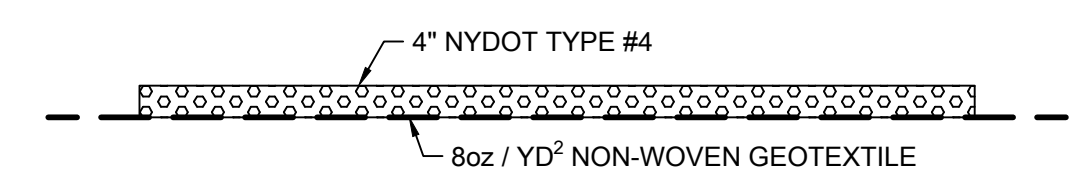
DRAWING NO.: 4 OF 8

P:\cadd\PROJECTS\Elimira\elimira.ny (mn0832c)\mn0832c-3-20\PERMIT\DRAWINGS\MN0832C-006.dwg
bferick - 5/7/2020 5:53 PM

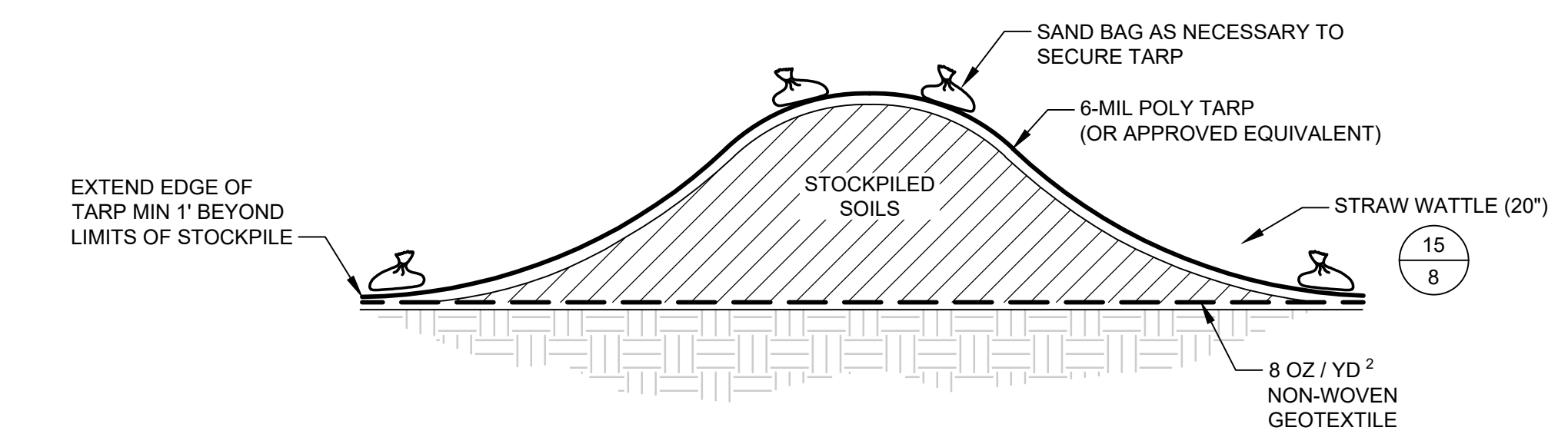


6
2 **PLAN**
STOCKPILE AREA
SCALE: 1" = 40'

LEGEND
○ DOCUMENTATION SURFACE SOIL SAMPLE



7
- **DETAIL**
MSA BASE LAYER
SCALE: NOT TO SCALE

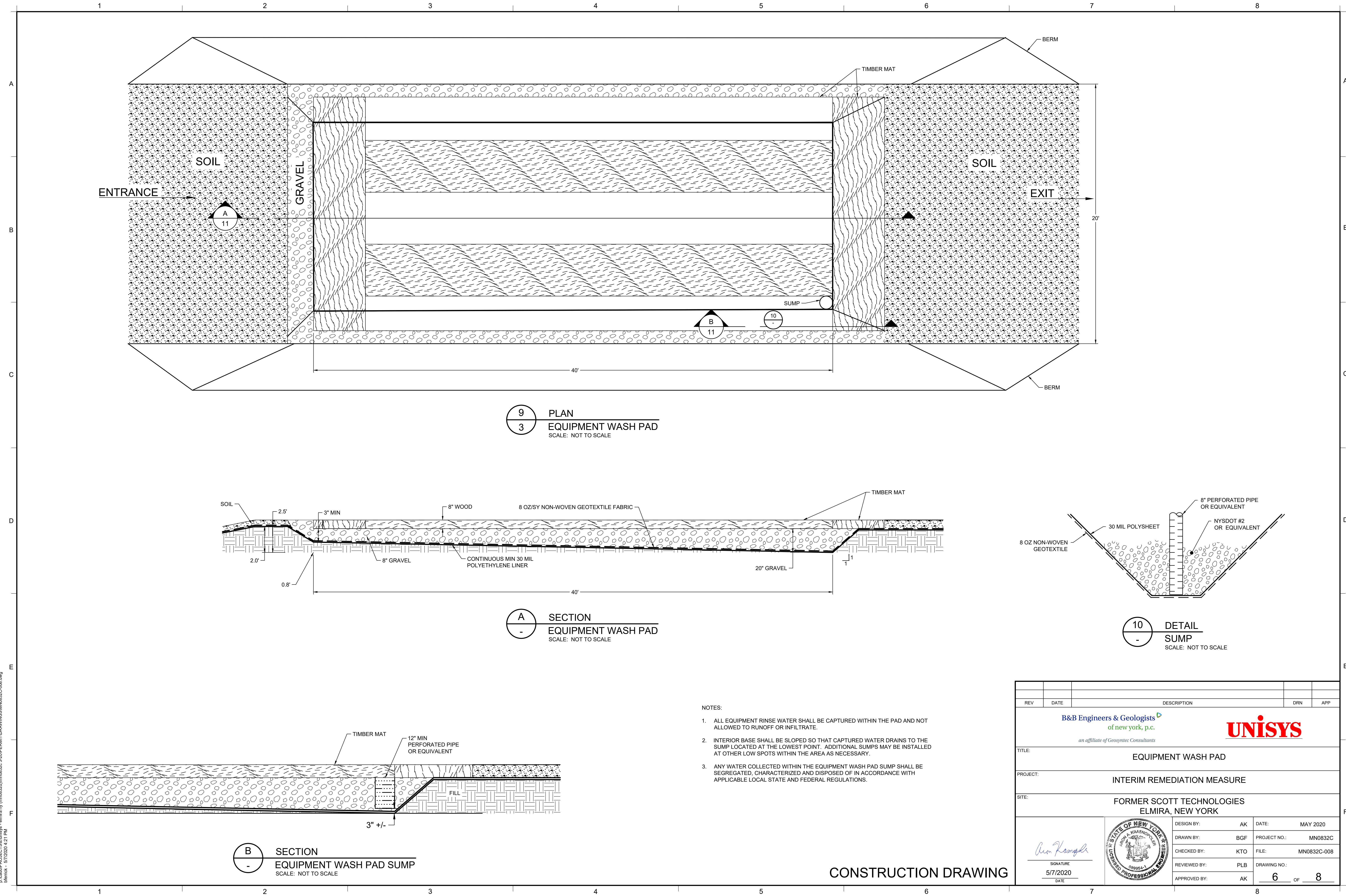


8
- **DETAIL**
SOIL STOCKPILE (SIDE VIEW)
SCALE: NOT TO SCALE

- MSA DECOMMISSIONING**
1. HORIZONTAL AND VERTICAL EXTENT OF THE AREA DISTURBED BY THE MSA WILL BE SURVEYED BY A NYS-LICENSED SURVEYOR.
 2. REMOVE ALL TEMPORARY FENCING, EQUIPMENT, STRUCTURES, ETC. FROM THE MSA WITH THE EXCEPTION OF THE EQUIPMENT WASH PAD.
 3. MSA BASE LAYER AND GEOTEXTILE FABRIC SHALL BE LOADED INTO TRUCKS FOR OFF-SITE DISPOSAL UPON APPROVAL OF THE WASTE PROFILE BY THE RECEIVING FACILITY. MATERIAL SHALL BE DISPOSED OF OFF-SITE IN ACCORDANCE WITH APPLICABLE FEDERAL AND STATE LAWS AND REGULATIONS AT UNISYS APPROVED FACILITY.
 4. ALL VEHICLES LEAVING THE LOADING AREA SHALL BE DECONTAMINATED PRIOR TO LEAVING THE SITE. SEE NOTES ON SHEET 4.
 5. DOCUMENTATION SAMPLES WILL BE COLLECTED BY ENGINEER. SAMPLE LOCATION AND ELEVATION WILL BE SURVEYED BY A NYS-LICENSED SURVEYOR.
 6. REMOVE EQUIPMENT WASH PAD AND TEMPORARY SEDIMENT AND EROSION CONTROLS FOR DISPOSAL IN ACCORDANCE WITH APPLICABLE FEDERAL AND STATE LAWS AND REGULATIONS AT UNISYS APPROVED FACILITY.

| | | | | |
|---|------|--|-----|-----|
| REV | DATE | DESCRIPTION | DRN | APP |
| <div><div>B&B Engineers & Geologists of new york, p.c. <small>an affiliate of Geosyniec Consultants</small></div><div>UNISYS</div></div> | | | | |
| TITLE: MATERIAL STAGING AREA PLAN (MSA) PLAN | | | | |
| PROJECT: INTERIM REMEDIATION MEASURE | | | | |
| SITE: FORMER SCOTT TECHNOLOGIES ELMIRA, NEW YORK | | | | |
| SIGNATURE <i>Aron Krasnowsky</i> 5/7/2020 DATE | | DESIGN BY: AK DRAWN BY: BGF CHECKED BY: KTO REVIEWED BY: PLB APPROVED BY: AK DATE: MAY 2020 PROJECT NO.: MN0832C FILE: MN0832C-006 DRAWING NO.: 5 OF 8 | | |

CONSTRUCTION DRAWING



9
3
PLAN
EQUIPMENT WASH PAD
SCALE: NOT TO SCALE

A
-
SECTION
EQUIPMENT WASH PAD
SCALE: NOT TO SCALE



10
-
DETAIL
SUMP
SCALE: NOT TO SCALE

B
-
SECTION
EQUIPMENT WASH PAD SUMP
SCALE: NOT TO SCALE

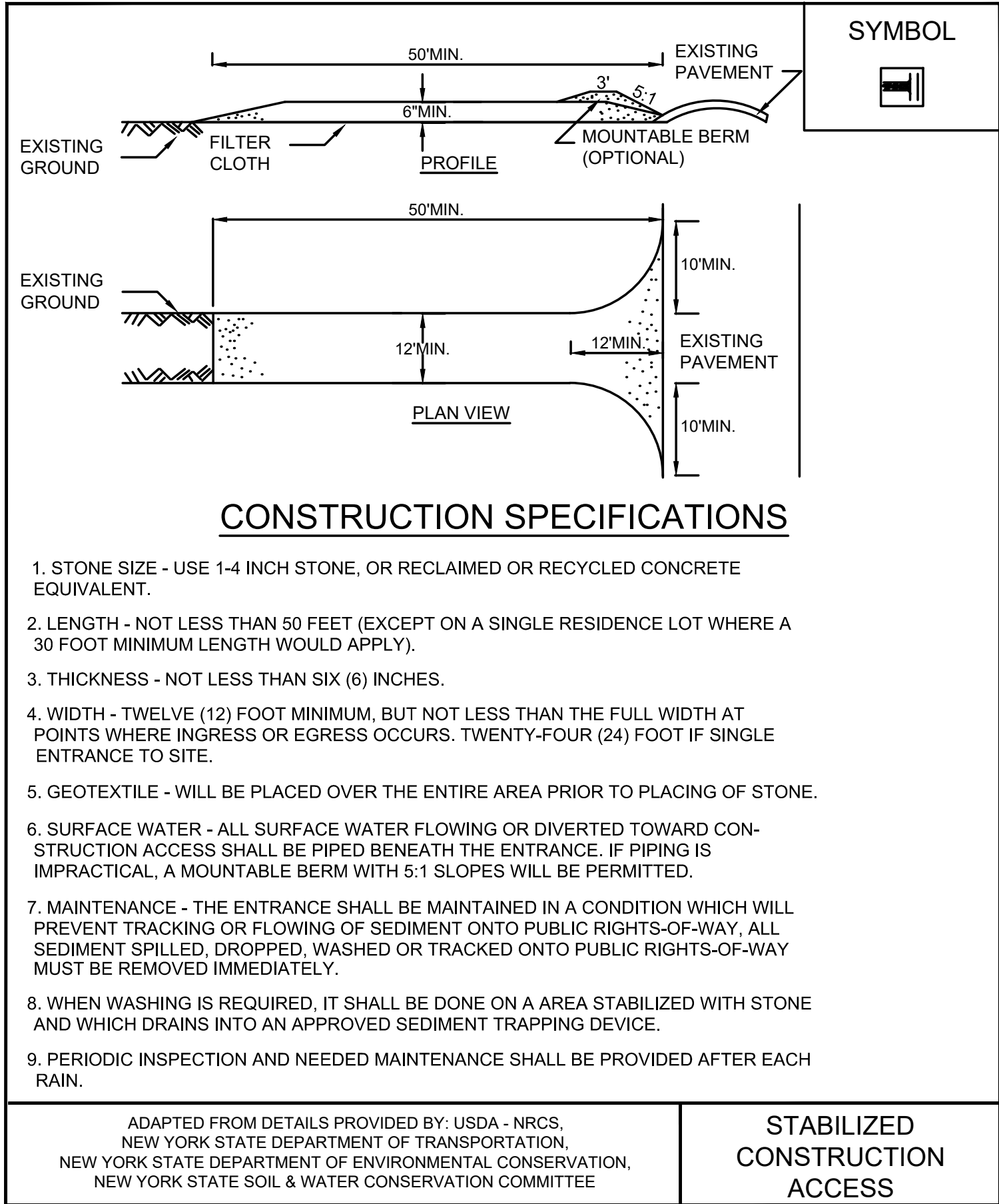
NOTES:

1. ALL EQUIPMENT RINSE WATER SHALL BE CAPTURED WITHIN THE PAD AND NOT ALLOWED TO RUNOFF OR INFILTRATE.
2. INTERIOR BASE SHALL BE SLOPED SO THAT CAPTURED WATER DRAINS TO THE SUMP LOCATED AT THE LOWEST POINT. ADDITIONAL SUMPS MAY BE INSTALLED AT OTHER LOW SPOTS WITHIN THE AREA AS NECESSARY.
3. ANY WATER COLLECTED WITHIN THE EQUIPMENT WASH PAD SUMP SHALL BE SEGREGATED, CHARACTERIZED AND DISPOSED OF IN ACCORDANCE WITH APPLICABLE LOCAL STATE AND FEDERAL REGULATIONS.

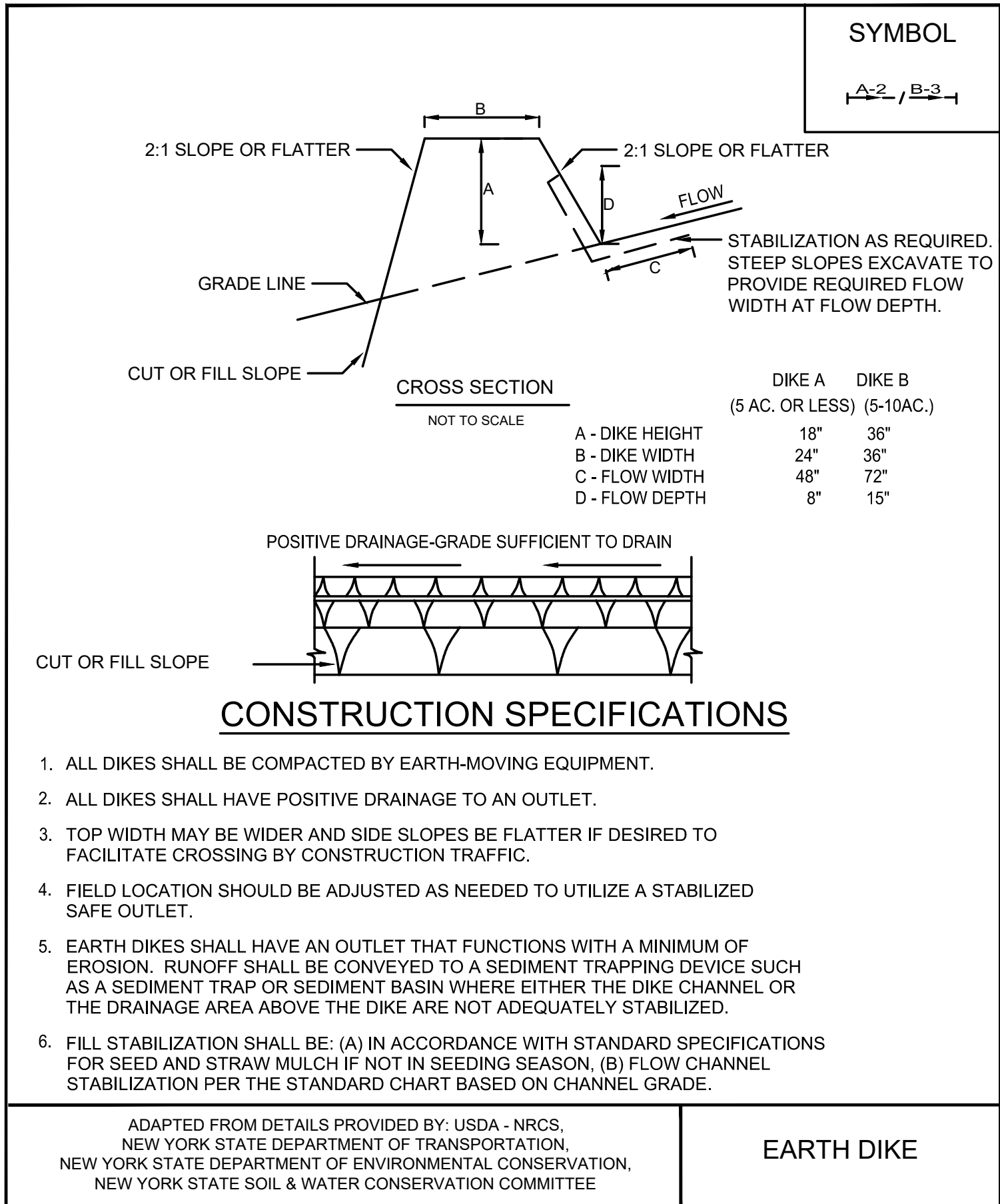
CONSTRUCTION DRAWING

| | | | | | |
|--|------|------------------|----------------------|-----|--|
| | | | | | |
| REV | DATE | DESCRIPTION | DRN | APP | |
| <div><div>B&B Engineers & Geologists of new york, p.c. <small>an affiliate of Geosynec Consultants</small></div><div>UNISYS</div></div> | | | | | |
| TITLE: EQUIPMENT WASH PAD | | | | | |
| PROJECT: INTERIM REMEDIATION MEASURE | | | | | |
| SITE: FORMER SCOTT TECHNOLOGIES ELMIRA, NEW YORK | | | | | |
| <div><div> SIGNATURE 5/7/2020 DATE</div><div> ARON A. KRASNOPOLSKY 089954-1 REGISTERED PROFESSIONAL ENGINEER</div></div> | | DESIGN BY: AK | DATE: MAY 2020 | | |
| | | DRAWN BY: BGF | PROJECT NO.: MN0832C | | |
| | | CHECKED BY: KTO | FILE: MN0832C-008 | | |
| | | REVIEWED BY: PLB | DRAWING NO.: 6 OF 8 | | |
| | | APPROVED BY: AK | | | |

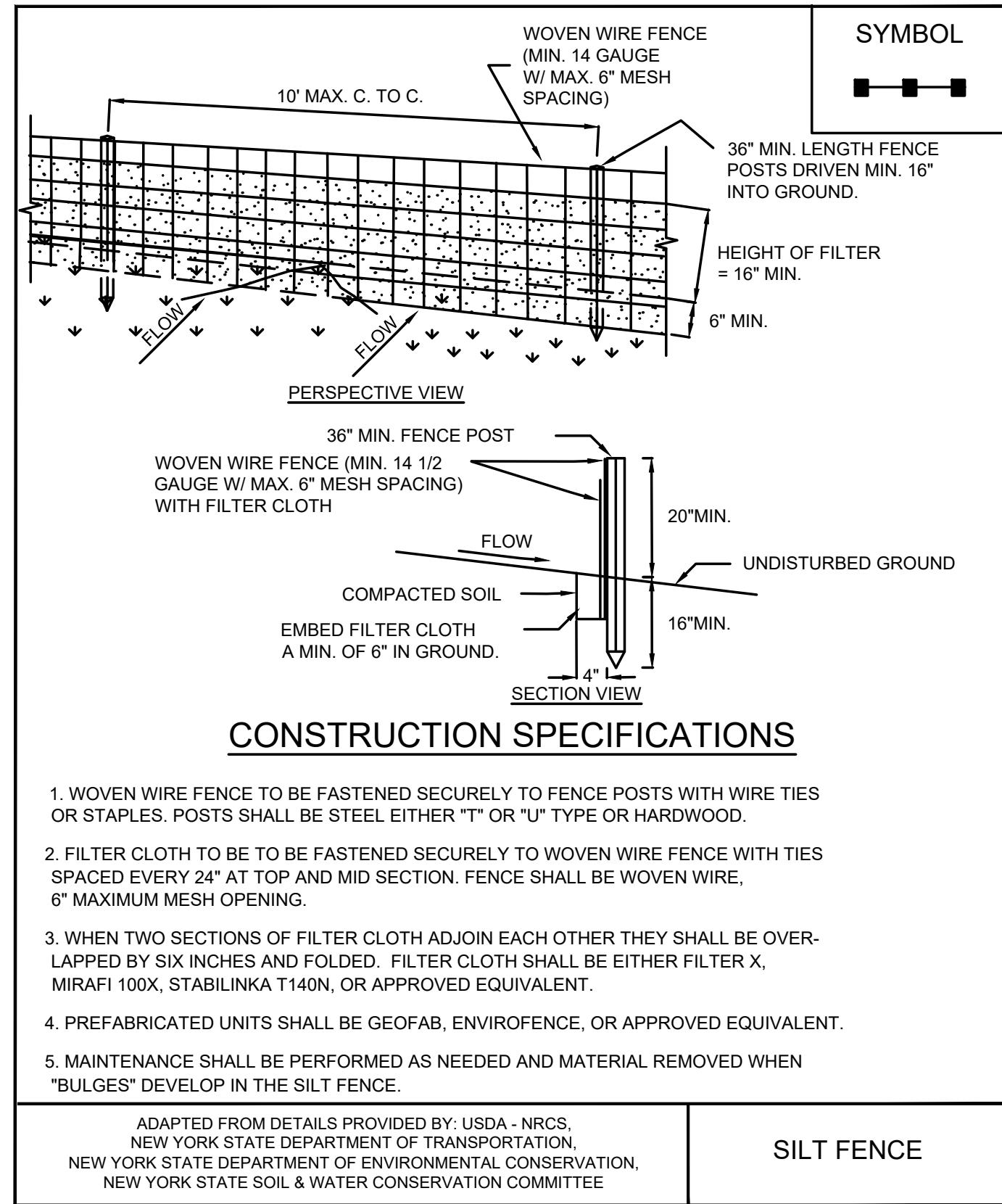
p:\cadd\PROJECTS\unisys - elmira ny (m0832c)\m0832c-3-20\PERMIT\DRAWINGS\MN0832C-012.dwg
b1erick - 5/7/2020 4:23 PM



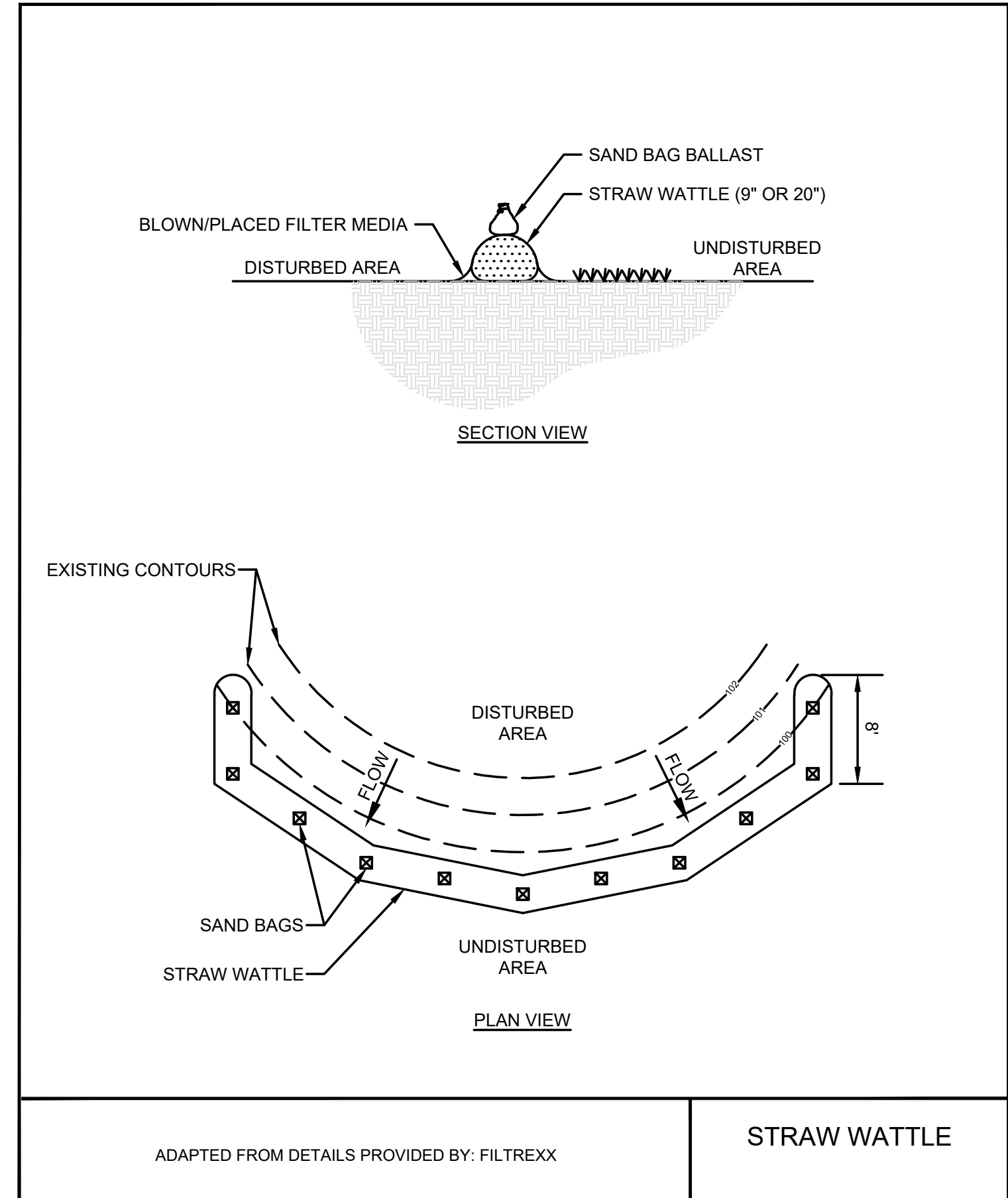
12
3 **DETAIL**
STABILIZED CONSTRUCTION ACCESS
SCALE: NOT TO SCALE



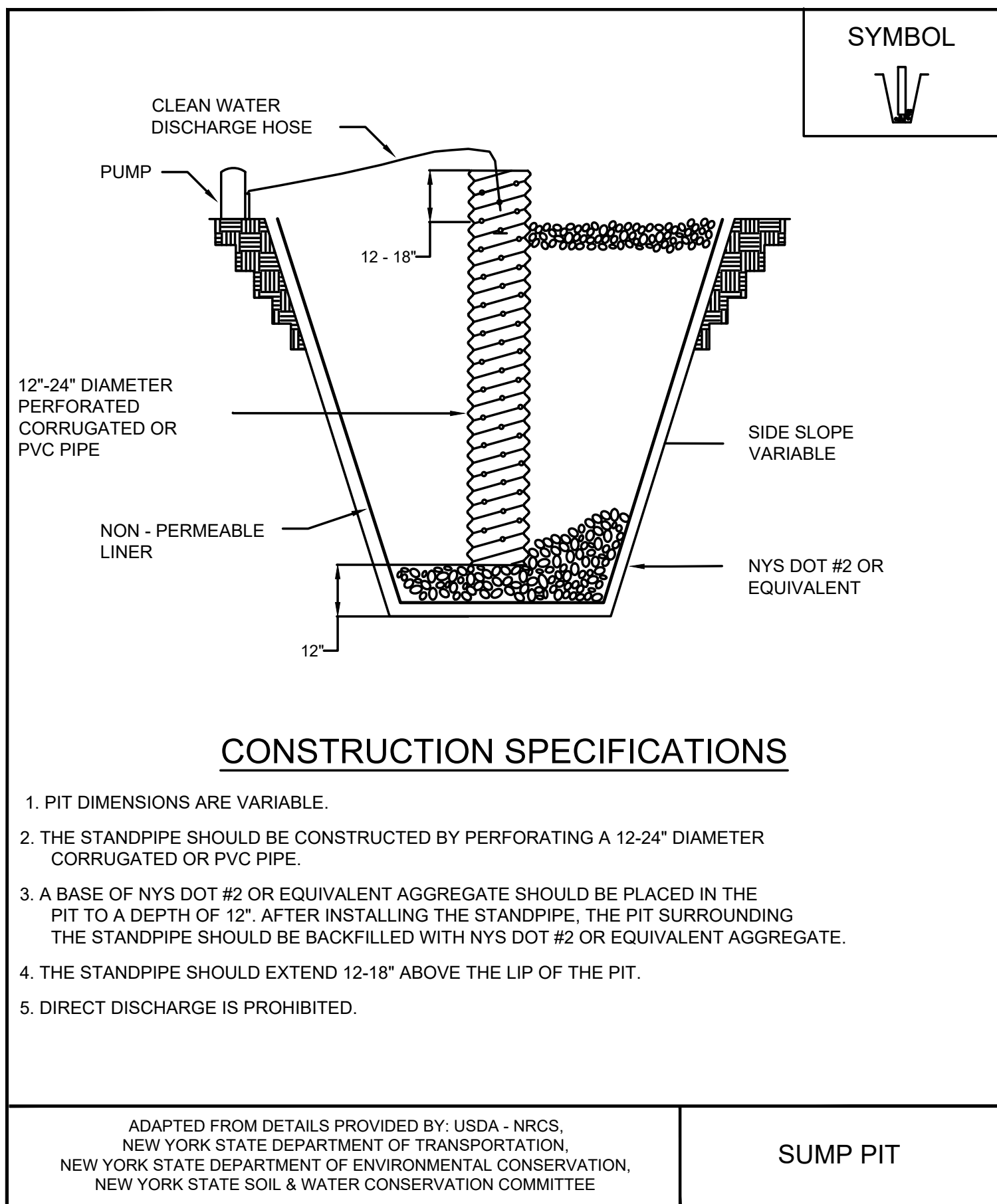
13
- **DETAIL**
EARTH DIKE
(NOTE: AS NEEDED)
SCALE: NOT TO SCALE



14
3 **DETAIL**
SILT FENCE
SCALE: NOT TO SCALE



15
5 **DETAIL**
STRAW WATTLE
SCALE: NOT TO SCALE



16
- **DETAIL**
EXCAVATION DEWATERING SUMP PIT
(NOTE: AS NEEDED)
SCALE: NOT TO SCALE

NON-SEDIMENT POLLUTION PREVENTION

THIS SITE POLLUTION PREVENTION PLAN DESCRIBES GENERAL ACTIVITIES TO PREVENT GENERATION OF POLLUTANTS DUE TO IMPROPER HANDLING STORAGE AND SPILLS, AND PREVENT THE MOVEMENT OF TOXIC SUBSTANCES FORM THE SITE INTO SURFACE WATERS. THE FOLLOWING MINIMUM PRACTICES FOR STORMWATER POLLUTION PREVENTION WILL BE PERFORMED:

- ALL STATE AND FEDERAL REGULATIONS SHALL BE FOLLOWED FOR THE STORAGE, HANDLING, APPLICATION, USAGE, AND DISPOSAL OF PESTICIDES, FERTILIZERS, AND PETROLEUM PRODUCTS.
- VEHICLE AND CONSTRUCTION EQUIPMENT STAGING AND MAINTENANCE AREAS WILL BE LOCATED AWAY FROM ALL DRAINAGE WAYS WITH THEIR PARKING AREAS GRADED SO THE RUNOFF FROM THESE AREAS IS COLLECTED, CONTAINED AND TREATED PRIOR TO DISCHARGE FROM THE SITE.
- CONTRACTOR SHALL PROVIDE SANITARY FACILITIES FOR ON-SITE PERSONNEL IN ACCORDANCE WITH THE PROJECT SPECIFICATIONS.
- CONTRACTOR SHALL STORE, COVER, AND ISOLATE CONSTRUCTION MATERIALS INCLUDING ALL EXCAVATION SPOILS, AND CHEMICALS, TO PREVENT RUNOFF OF POLLUTANTS AND CONTAMINATION OF GROUNDWATER AND SURFACE WATERS.
- CONTRACTOR SHALL DEVELOP AND IMPLEMENT A SPILL PREVENTION AND CONTROL PLAN. THE PLAN SHOULD INCLUDE NYSDEC'S SPILL REPORTING AND INITIAL NOTIFICATION REQUIREMENTS.
- CONTRACTOR SHALL PROVIDE ADEQUATE DISPOSAL FOR SOLID WASTE INCLUDING WOODY DEBRIS, STUMPS, AND OTHER CONSTRUCTION WASTE AND MUNICIPAL WASTE. FILL, WOODY DEBRIS, STUMPS AND CONSTRUCTION WASTE SHALL NOT BE PLACED IN REGULATED WETLANDS, STREAMS OR OTHER SURFACE WATERS.
- CONTRACTOR SHALL POST INFORMATIONAL MATERIAL REGARDING PROPER HANDLING, SPILL RESPONSE, SPILL KIT LOCATION, AND EMERGENCY ACTIONS TO BE TAKEN, TO ALL CONSTRUCTION PERSONNEL.
- REFUELING EQUIPMENT SHALL BE LOCATED AT LEAST 100 FEET FROM ALL WETLANDS, STREAMS AND OTHER SURFACE WATERS.

MAINTENANCE AND INSPECTION

- ALL TEMPORARY EROSION AND SEDIMENT CONTROL PRACTICES AND STORMWATER POLLUTION PREVENTION PLAN PRACTICES SHALL BE INSPECTED DAILY FOR PROPER APPLICATION AND FUNCTION AS DEFINED IN THE SPECIFICATIONS AND/OR NEW YORK STATE STANDARDS FOR SOIL EROSION AND SEDIMENT CONTROL.
- DAILY INSPECTION REPORTS SHALL BE MAINTAINED ON-SITE THROUGHOUT CONSTRUCTION.

DISCHARGE

- ANY WATER CONTACTING EXCAVATION AREAS PRIOR TO BACKFILLING WITH SOIL COVER SYSTEM (SEE DETAIL 5, SHEET 4) OR WATER COLLECTED WITHIN THE EQUIPMENT WASH PAD SUMP, SHALL BE SEGREGATED, CHARACTERIZED AND DISPOSED OF IN ACCORDANCE WITH APPLICABLE LOCAL, STATE, AND FEDERAL REGULATIONS.
- AT THE COMPLETION OF CONSTRUCTION, ALL TEMPORARY ACCESS ROAD CONSTRUCTION MATERIALS AND EQUIPMENT WASH PAD CONSTRUCTION MATERIALS SHALL BE REMOVED, CHARACTERIZED, AND DISPOSED OF ACCORDANCE WITH NYSDEC-APPROVED IRM WORK PLAN.

NOTES:

- CONTRACTOR SHALL UTILIZE EARTH DIKE, COMPOST FILTER SOCK, AND DEWATERING SUMP PIT.
- CONTRACTOR SHALL INSTALL TEMPORARY 6' TALL CHAIN LINK FENCING PARALLEL TO THE LIMITS OF CONSTRUCTION DISTURBANCE. FENCING SHALL INCLUDE VISUAL SCREENING.

| | | | | |
|--|------|----------------------|-----|-----|
| | | | | |
| REV | DATE | DESCRIPTION | DRN | APP |
| <div><div>B&B Engineers & Geologists of new york, p.c. an affiliate of Geosynec Consultants</div><div>UNISYS</div></div> | | | | |
| TITLE: EROSION AND SEDIMENT CONTROL DETAILS | | | | |
| PROJECT: INTERIM REMEDIATION MEASURE | | | | |
| SITE: FORMER SCOTT TECHNOLOGIES ELMIRA, NEW YORK | | | | |
| DESIGN BY: AK | | DATE: MAY 2020 | | |
| DRAWN BY: BGF | | PROJECT NO.: MN0832C | | |
| CHECKED BY: KTO | | FILE: MN0832C-012 | | |
| REVIEWED BY: PLB | | DRAWING NO.: | | |
| APPROVED BY: AK | | 8 OF 8 | | |