



**Project Management Work Plan
William Benson Landfill (8-26-007)
Livonia, New York**

Prepared for

New York State Department of Environmental Conservation
625 Broadway
Albany, New York 12233



Prepared by

EA Engineering, P.C., and Its Affiliate
EA Science and Technology
6712 Brooklawn Parkway, Suite 104
Syracuse, New York 13211-2158
(315) 431-4610

May 2007
Revision: FINAL
EA Project No. 14474.04

Project Management Work Plan William Benson Landfill (8-26-007) Livonia, New York

Prepared for

New York State Department of Environmental Conservation
625 Broadway
Albany, New York 12233



Prepared by

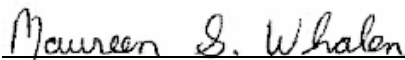
EA Engineering, P.C. and Its Affiliate
EA Science and Technology
6712 Brooklawn Parkway, Suite 104
Syracuse, New York 13211-2158
(315) 431-4610



Christopher J. Canonica, P.E., Program Manager
EA Engineering, P.C.

5/22/07

Date



Maureen S. Whalen, C.P.G., Project Manager
EA Engineering, P.C.

5/22/07

Date

May 2007
Revision: FINAL
EA Project No. 14474.04

CONTENTS

	<u>Page</u>
1. INTRODUCTION	1
1.1 Project Management Work Plan Organization.....	1
1.2 Description of Work Tasks.....	2
1.2.1 Background review and Project Management Work Plan preparation (Task 1).....	2
1.2.2 Site Management Plan preparation (Task 2)	2
1.2.3 Site Management Plan implementation (Task 3)	3
2. PROJECT ORGANIZATION AND SCHEDULE.....	5
2.1 Project Organization.....	5
2.2 Project Management.....	5
2.3 Project Schedule	6
3. SUBCONTRACTORS	7
4. MINORITY/WOMAN-OWNED BUSINESS ENTERPRISE-EQUAL EMPLOYMENT OPPORTUNITY UTILIZATION PLAN	8
4.1 Consultant/Contractor Detailed M/WBE-EEO Utilization Plan	8
APPENDIX A: WORK ASSIGNMENT BUDGET SCHEDULE 2.11	
APPENDIX B: SUBCONTRACTOR QUOTE – DATA VALIDATOR	

LIST OF FIGURES

<u>Number</u>	<u>Title</u>
1	Site location.
2	Project organization chart.
3	Project schedule.

1. INTRODUCTION

The New York State Department of Environmental Conservation (NYSDEC) tasked EA Engineering, P.C. and its affiliate EA Science and Technology (EA) to provide Site Management from 28 May 2007 to 28 May 2011 at the William Benson Landfill (WBLF) in the Town of Livonia, Livingston County, New York (Figure 1).

The WBLF is located off Richmond Mills Road in the Town of Livonia, Livingston County, New York. The WBLF is an 8-acre landfill that received hazardous waste during its operational history (approximately 1970 to 1984) and was not properly closed. A remedial investigation conducted in phases between June 1997 and April 1998 revealed the presence of contaminants of concern (including metals, volatile organic compounds, and semivolatile organic compounds) in the surface and subsurface soil, leachate, and groundwater. A Record of Decision dated 16 March 2000 selected a remedy, which included the construction of a modified 6 New York State Codes, Rules, and Regulations Part 360 cover system and implementation of a long-term monitoring plan. An Operations, Maintenance, and Monitoring Plan (OMMP) was finalized in August 2004. The OMMP provides direction for implementation of the remedy selected by the Record of Decision.

The Work Assignment will be conducted under the NYSDEC State Superfund Standby Contract (Work Assignment No. D004441-4). The initial step in the Work Assignment is preparation of this Project Management Work Plan (PMWP), which describes the anticipated work activities and the associated budget and staffing plan. The elements of this PMWP were prepared in accordance with the most recent and applicable guidelines and requirements of NYSDEC.

1.1 PROJECT MANAGEMENT WORK PLAN ORGANIZATION

This PMWP is organized into the following sections:

- Section 1: Provides the overall approach and specific activities that will be performed during the development and implementation of the Site Management Plan (SMP)
- Section 2: Presents the project organization and schedule
- Section 3: Identifies areas of work that will require subcontracting
- Section 4: Presents the utilization plan for Minority/Women-Owned Business Enterprise (M/WBE) subcontractors and Equal Employment Opportunity (EEO) within EA.

This PMWP document is a stand alone document; the SMP will be submitted under a separate cover.

The budget for this Work Assignment (Schedule 2.11) is provided in Appendix A.

1.2 DESCRIPTION OF WORK TASKS

The following tasks have been completed or will be completed as part of this Work Assignment:

- Task 1: Background review and PMWP preparation
- Task 2: SMP preparation
- Task 3: SMP implementation.

A brief summary of each activity is provided below.

1.2.1 BACKGROUND REVIEW AND PROJECT MANAGENT WORK PLAN PREPARATION (TASK 1)

During preparation of this PMWP, a site visit was held at the WBLF site in Livonia, New York on March 27, 2007. Meeting attendees included representatives from the NYSDEC Division of Environmental Remediation and EA.

Subsequent to the site visit, EA obtained and reviewed the following reports:

- *Record of Decision, William Benson Landfill Site, Town of Livonia, Livingston County, Site Number 8-26-007* (NYSDEC, 2000)¹
- *Operations, Maintenance, and Monitoring Plan, Final Revision 2, William Benson Landfill, Livingston County, New York* (GeoSyntec Consultants, 2004)²
- *Draft Interim Remedial Investigation Report for the William Benson Landfill, ELF ATOCHEM North America, Inc.* (Malcolm Pirnie, Inc., 1998)³.

Information collected from the site visit and the background review has been incorporated into this PMWP.

1.2.2 SITE MANAGEMENT PLAN PREPARATION (TASK 2)

Upon the NYSDEC's approval of this PMWP, EA will prepare a detailed SMP. The SMP will provide all procedures for completing the site monitoring activities. A detailed project schedule and a final budget (Schedule 2.11) with supporting documentation of bids are included in this PMWP.

¹ New York State Department of Environmental Conservation, 2000. Record of Decision, William Benson Landfill Site, Town of Livonia, Livingston County, Site Number 8-26-007. March.

² GeoSyntec Consultants, 2004. Operations, Maintenance, and Monitoring Plan. Final Revision 2, William Benson Landfill, Livingston County, New York. August.

³ Malcolm Prinie, Inc. 1998. Draft Interim Remedial Investigation Report for the William Benson Landfill, ELF ATOCHEM North America, Inc.

The SMP also will include a sampling and analysis plan, Health and Safety Plan (HASP), and a Quality Assurance Project Plan (QAPP). The QAPP will include a summary table, which presents anticipated samples collected for laboratory analysis, media sampled, methodology, and anticipated quality assurance/quality control (QA/QC) samples. Both the NYSDEC Analytical Services Protocol and non-Analytical Services Protocol will be provided in the QAPP.

1.2.3 SITE MANAGEMENT PLAN IMPLEMENTATION (TASK 3)

The primary focus of this Work Assignment is to develop and implement a SMP based on the OMMP dated August 2004. The following tasks will be included in the SMP:

- **Site Maintenance/Monitoring Well Repair and/or Replacement:** Based on the March 27, 2007 site visit, at least one well (MW-11D) may need to be replaced. Well MW-4 needs a new protective casing and a cement pad, and the protective casing for all of the wells will need to be painted. Additionally, all of the wells need new locks that are keyed alike. These will be provided by NYSDEC. The NYSDEC will be responsible for mowing and other minor maintenance activities as needed.
- **Site Survey:** Subsequent to repair/replacement of monitoring wells, all wells and piezometers will be resurveyed. The well locations and elevations will be established using the benchmark in the existing base map.
- **Inspection and Maintenance of Landfill Cover System and Landfill Gas Monitoring:** The landfill cover system will be inspected quarterly. Real-time sweep measurements of landfill gases, using a flame ionization detector and explosivity meter, will be taken at the perimeter of the landfill and at the passive landfill gas vents within the perimeter of the landfill. The measurements will be taken quarterly for the first year and annually for years 2 through 4.
- **Groundwater Elevation Monitoring and Groundwater Sampling and Analysis:** Depth to groundwater will be measured in all monitoring wells and piezometers quarterly for the first year and annually for years 2 through 4. The depth to groundwater measurements will be used to generate groundwater elevation/flow direction maps. Groundwater samples will be taken quarterly for the first year from the monitoring wells. Groundwater samples will be analyzed for Target Compound List Metals, volatile organic compounds, semivolatile organic compounds, and pesticides. Based on first year sampling results, recommendations will be made for modification of the sampling analysis plan for years 2 through 4. The laboratory and field data will be reviewed to determine the limitations, if any, of the data and to assure that the procedures are effective and that generated data provide sufficient information to achieve the project objectives. The analytical data will be evaluated in accordance with the NYSDEC Department of Environmental Remediation Data Usability Summary Report (DUSR) guidelines.

- **Reports:** Reports summarizing landfill cap inspection, gas monitoring, groundwater elevation, and groundwater sampling and analysis will be prepared quarterly for the first year. The fourth quarter report will contain a summary of the first year's quarterly activities and will include a periodic review report (PRR). Monitoring reports summarizing the activities and results of the annual monitoring event for years 2 to 4 will be provided annually and will include the PRR. The PRR will be provided by May 15th of each year. Additionally, a DUSR will be submitted for one sampling event in year 1 and for the annual sampling event in year 3. Additional DUSRs will be provided as needed.

2. PROJECT ORGANIZATION AND SCHEDULE

2.1 PROJECT ORGANIZATION

The implementation of the SMP at the WBLF site will be managed through an organized effort of scientific and engineering personnel and technical resources. These efforts will employ pre-approved field procedures, sampling techniques, and analytical methods to accomplish the project objectives. Effective program organization will accommodate these requirements while maintaining a manageable degree of control over these activities.

Figure 2 illustrates the project organization for the accomplishment of this effort. The key technical management of this investigation will be accomplished by the project manager and assigned project team. Additional individuals will be made available, if warranted. Areas of work that require subcontracting are discussed in Section 3.

2.2 PROJECT MANAGEMENT

EA will provide oversight, coordination, health and safety, field support, and evaluation of analytical data. EA will also be responsible for evaluation of analytical test results, which will be submitted to NYSDEC. The EA staff members involved in this project are detailed below:

- **Chris Canonica, P.E., Certifying Engineer**—The Certifying Engineer will provide guidance on technical matters and review technical documents relating to the project. He will evaluate information relative to the site, make recommendations for plan modifications when applicable and delegate technical guidance to specially trained individuals under his direction. Additionally, he will provide professional engineer certification on all reports issued as part of this work assignment.
- **Maureen S. Whalen, C.P.G., EA Project Manager**—The Project Manager provides overall coordination and preparation of the project within EA. This includes coordination with NYSDEC and New York State Department of Health, budget control, subcontractor performance, implementation of the Quality Assurance Project Plan, and allocation of resources and staffing to implement both the QA/QC program and the site Health and Safety Plan.
- **Scott Graham, C.P.G., EA Project QA/QC Coordinator**—The Project QA/QC Coordinator is responsible for project-specific supervision and monitoring of the QA/QC program. He will ensure that field personnel are familiar with and adhere to proper sampling procedures, field measurement techniques, sample identification, and chain-of-custody procedures. He will coordinate with the analytical laboratory for the receipt of samples and reporting of analytical results, and will recommend actions to correct deficiencies in the analytical protocol or sampling. Additionally, he will prepare QA/QC reports for management review.

- ***Kris Charney/David Crandall, EA Site Managers***—The Site Manager will serve as the onsite contact person for field investigations and tests. He will be responsible for coordinating the field activities; including inspecting and replacing equipment, preparing daily and interim reports, scheduling sampling, and coordinating shipment and receipt of samples and containers.

The Program Safety and Health Officer is also an integral part of the project implementation team.

- ***Peter Garger, EA Program Health and Safety Officer***—The Program Safety and Health Officer will be responsible for the development, final technical review, and approval of the HASP. In addition, he will provide authorization, if warranted, to modify personal protective equipment requirements based on field conditions. He will also provide final review of all safety and health monitoring records and personal protective equipment changes to ensure compliance with the provisions of the HASP.

2.3 PROJECT SCHEDULE

The proposed schedule for implementation of the SMP is presented on Figure 3. The schedule only includes tasks associated with this Work Assignment. The schedule assumes a field activity start date of June 20, 2007 (quarterly groundwater sampling, landfill cover inspection, and landfill gas monitoring). The schedule reflects the annual submittal of the PRR by 15 May of each year. Based on access constraints, replacement of well MW-11D may be postponed until site conditions permit drill rig access to the wellhead (possibly November/December 2007). However, the schedule does not account for delays due to unforeseen site conditions (i.e., inclement weather).

Every attempt will be made to adhere to the schedule presented. Unexpected delays will be documented and reported to NYSDEC in a timely fashion. In the event that the schedule needs to be modified, EA will contact NYSDEC for approval of the updated schedule.

3. SUBCONTRACTORS

Successful implementation of the field and reporting activities associated with this Work Assignment will require the following types of subcontractors:

- A drilling contractor to abandoned and replace existing groundwater monitoring well MW-11D and repair well MW-4
- An offsite laboratory to analyze various environmental samples (groundwater)
- A surveyor to assist in the development of a site plan which can tie into the existing site plan depicting general site features as well as the locations of all new and existing monitoring wells and piezometers
- A data validator to perform a usability analysis of the laboratory data associated with the field samples for years 1 and 3 of the Work Assignment.

In accordance with the NYSDEC draft *Handbook for Standby Consultant Contracts (for DER Standby Consultants)* (NYSDEC 2005)⁴, EA has established standby subcontracts for laboratory analyses, drilling, and surveying/engineering services. EA is distributing the services required for completion of this Work Assignment to these standby subcontractors on a rotational basis and as necessary to satisfy EA's M/WBE goals. Mitkem Corporation and EDS will be performing the laboratory analyses and data validation services, respectively, for this Work Assignment. EA proposes to use OM P. Popli, P.E., L.S., P.C. to perform the surveying services required for completion of this Work Assignment.

Quotes for the site-specific drilling items (e.g., mobilization/demobilization) were solicited from four standby subcontracted drilling contractors, as specified in the NYSDEC draft *Handbook for Standby Consultant Contracts*. Two of the four drilling contractor's submitted site-specific drilling items and mobilization costs associated with this Work Assignment. Nothnagle submitted the lowest overall rate to perform the drilling services required to complete this Work Assignment.

Based on evaluation of current subcontractor standby rates, EA proposes the list of subcontractors provided below. Additional cost information from the subcontractors not under standby contract will be included as an appendix to the Final PMWP.

Activity	Subcontractor	Projected Contract Amount (\$)
Analytical Laboratory (Groundwater)	Mitkem Corporation	47,841
Driller	Nothnagle	2,765
Surveyor	Popli	2,179
Data Validation	EDS	2,048

⁴ NYSDEC. 2005. Draft *Handbook for Standby Consultant Contracts (for DER Standby Consultants)*. December.

4. MINORITY/WOMAN-OWNED BUSINESS ENTERPRISE-EQUAL EMPLOYMENT OPPORTUNITY UTILIZATION PLAN

It is understood that EA is required by NYSDEC to make Good Faith Efforts towards the realization of M/WBE-EEO goals established under the Standby Contracts. Accordingly, the remainder of this section contains the Consultant/Contractor Detailed M/WBE-EEO Utilization Plan prepared for this Work Assignment. The M/WBE-EEO Utilization Plan identifies that EA's goals are to award 20 percent of the total contract costs to M/WBE firms. Specifically, the goals are to award 15 percent of the total contract costs to MBE firms (\$20,328) and 5 percent of the total contract costs to WBE firms (\$6,776). In addition, EA's goals are to have 10 percent of EA's workforce for the project be minority and 10 percent be female.

In accordance with the NYSDEC draft *Handbook for Standby Consultant Contracts*, EA has established standby subcontracts with New York State Department of Economic Development-certified M/WBE firms that provide laboratory analyses, drilling and surveying/engineering services. In order to meet the M/WBE goals, EA solicited quotes for mobilization/demobilization and other site-specific drilling items (not previously quoted) from the four standby drilling companies. In addition, EA proposes to use a standby M/WBE subcontractors (as identified below) to perform the laboratory analyses, surveying, drilling, and data validation services required to conduct the OMMP at the WBLF site as detailed in Section 3 of this PMWP.

Subcontractor	Classification	Service to be Performed	Projected Contract Amount (\$)	Award Date	Contract Start Date	Projected Completion Date
Mitkem Corporation	MBE	Lab Analysis (Aqueous)	47,841	TBD	TBD	TBD
Popli	MBE	Surveying	2,179	TBD	TBD	TBD
EDS	WBE	Data Validation	2,048	TBD	TBD	TBD

Approximately 37 percent of the total contract costs is proposed to be performed by MBE firms, which is higher than the Standby Contract MBE utilization goals. The WBE utilization goal is not anticipated to be met for this project, with approximately 1.5 percent of the total contract costs proposed to be awarded to a WBE firm. Thirty-eight percent of the total project cost is anticipated to be allowed to M/WBE firms.

As identified in the M/WBE-EEO Utilization Plan, approximately 27 percent of EA's total contract hours for the WBLF site is proposed to be worked by female employees (Section 4.1). However, none of EA's total contract hours are anticipated to be worked by minority employees.

4.1 CONSULTANT/CONTRACTOR DETAILED M/WBE-EEO UTILIZATION PLAN

The plan consists of four forms, which are included in the following pages.

**CONSULTANT/CONTRACTOR DETAILED M/WBE-EEO UTILIZATION PLAN
 NEW YORK STATE DEPARTMENT OF ENVIRONMENTAL CONSERVATION
 (THE M/WBE-EEO GOALS MUST BE PLACED ON THE ENTIRE PROJECT COST)**

Consultant Name: EA Engineering, P.C.	
Contract Type/Number: Stand By D004441-4 Services	Contract Award Date:
Address: 6712 Brooklawn Parkway	City: Syracuse
State: New York	Zip Code: 13211-2158
Project Owner Name: New York State Department of Environmental Conservation	Project/Grant No.: 1447405
Address: 625 Broadway	City: Albany
NY	Zip Code: 12233
Authorized Representative:	Title:
Authorized Signature:	
NYSDEC DER Site 8-28-084, EA Work Assignment D004441-5	

EEO AND M/WBE CONTRACT SUMMARY (MUNICIPAL FORCE ACCOUNT N/A)

M/WBE CONTRACT SUMMARY			%	Amount	EEO CONTRACT SUMMARY			%	No./Emp.	Wk./Hrs.
1.	Total Dollar Value of the Project	100	\$135,519.00	6.	Total for all Employees			8	1020	
2.	Total Dollar Value of the Prime Contract	100	\$135,519.00	7.	Total Goal for Minority Employees	10		0	0	
3.	MBE Goal/Amount	15	\$20,327.85	8.	Total Goal for Female Employees	10		3	102	
4.	WBE Goal/Amount	5	\$6,775.95	9.	EEO Combined Totals	20		3	102	
5.	MBE/WBE Combined Totals	20	\$27,103.80							

Office of Minority & Women's Business Programs Use Only

Proposed Goals		Date Approved	Date Disapproved	Initials
MBE (%)	EEO-Minorities (%)			
WBE (%)	EEO-Minorities (%)			

SECTION I - MBE INFORMATION:

In order to achieve the MBE Goals, New York State Certified MINORITY-OWNED firms are expected to participate in the following manner

MBE Firm		Projected MBE Contract Amount and Award Date	Description of Work MBE	Contract Schedule/Start Date(s)	Contract Payment Schedule	Project Completion Date
Name:	Popli Consulting Engineers and Surveyors	\$2,178.68	Surveying			
Address:	555 Penbrooke Drive					
City:	Penfield					
State/Zip Code:	NY 14526					
Telephone No.:	(585) 388-2060					
Name:	Mitkem Corporation	\$47,841.15	Aqueous Analytical			
Address:	175 Metro Center Blvd.					
City:	Warick					
State/Zip Code:	RI 02886					
Telephone No.:	(401) 732-3400					
Name:						
Address:						
City:						
State/Zip Code:						
Telephone No.:						

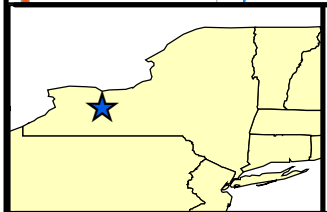
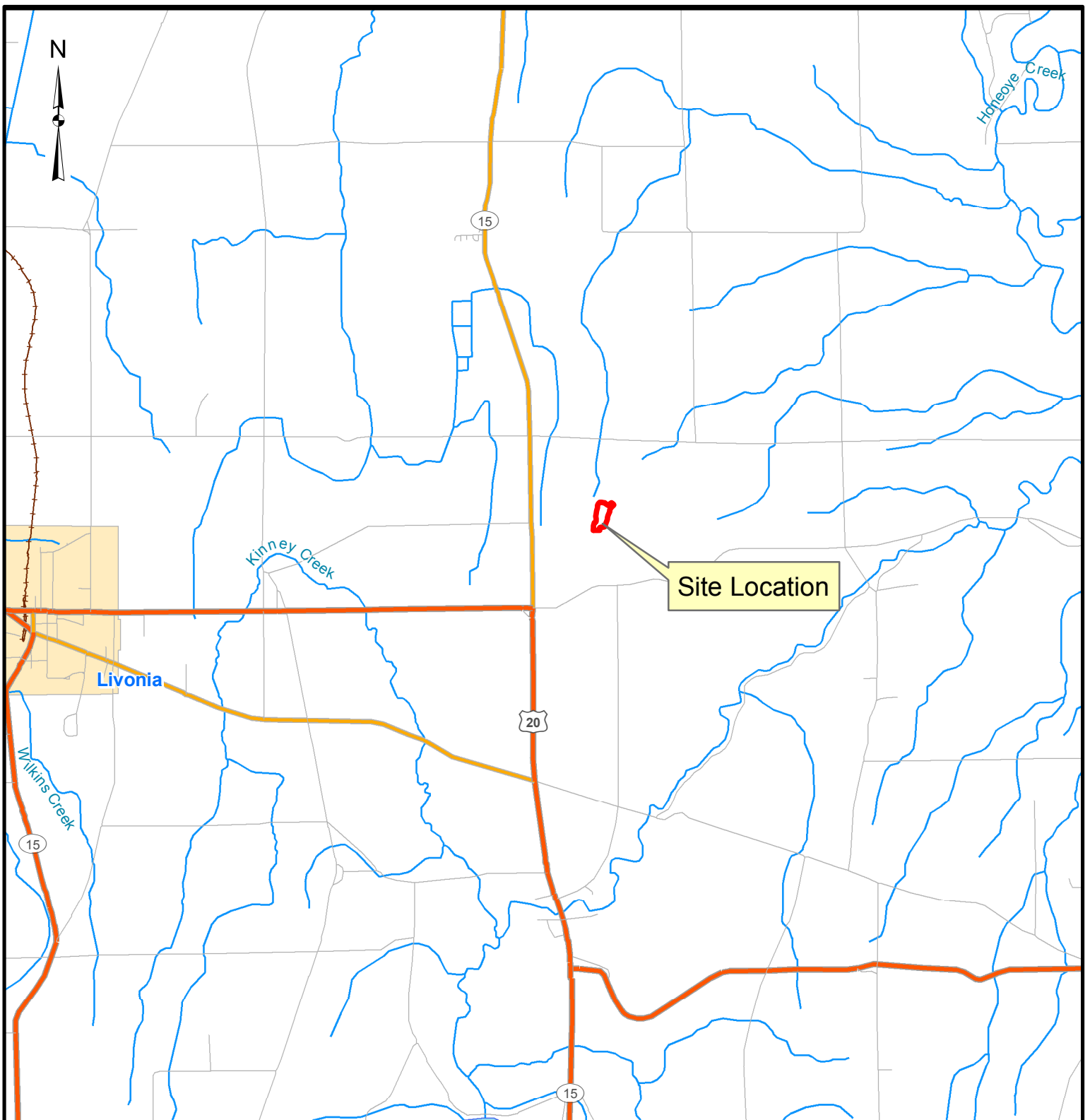
SECTION II - WBE INFORMATION:

In order to achieve the WBE Goals, New York State Certified WOMEN-OWNED firms are expected to participate in the following manner

WBE Firm	Projected WBE Contract Amount and Award Date	Description of Work WBE	Contract Schedule/Start Date(s)	Contract Payment Schedule	Project Completion Date
Name: EDS Address: 1156 Jamestown Rd., Suite A City: Williamsburg State/Zip Code: Virginia 23185 Telephone No.: 757-564-0090	\$2,047.50 DATE: TBD	Data Validation			
Name: Address: City: State/Zip Code: Telephone No.:	DATE:				
Name: Address: City: State/Zip Code: Telephone No.:	DATE:				

SECTION III - EEO INFORMATION: In order to achieve the EEO Goals, Minorities and Females are expected to be employed in the following job categories for the specified amount of work hours.

Job Categories	Total Work Hours of Contract	All Employees		Minority Employees			
		Male	Female	African-American	Asian	Native American	Hispanic
Officials/ Managers NSPE VI	57	57	0	0	0	0	0
Professionals NSPE VI/IV/III/II/I	906	687	219	0	0	0	0
Technicians	0	0	0	0	0	0	0
Sales Workers	0	0	0	0	0	0	0
Office/Clerical NSPE III/II/I	57	0	57	0	0	0	0
Craftsman	0	0	0	0	0	0	0
Laborers	0	0	0	0	0	0	0
Services/ Workers	0	0	0	0	0	0	0
Totals	1,020	744	276	0	0	0	0



Legend

Urban Areas	Rivers (Local)
Expressway/Interstate	Water (Local)
Highway	National Park or Forest
Major Road	State Park or Forest
Local Road	

0 2

Miles

Source: ESRI STREETMAP 2005



**WILLIAM BENSON LANDFILL SITE (8-26-007)
LIVONIA, NEW YORK**

**FIGURE 1
SITE LOCATION**

PROJECT MGR: MSW	DESIGNED BY: FDJR	CREATED BY: FDJR	CHECKED BY: MSW	SCALE: AS SHOWN	DATE: April 2007	PROJECT NO: 14474.04	
---------------------	----------------------	---------------------	--------------------	--------------------	---------------------	-------------------------	--

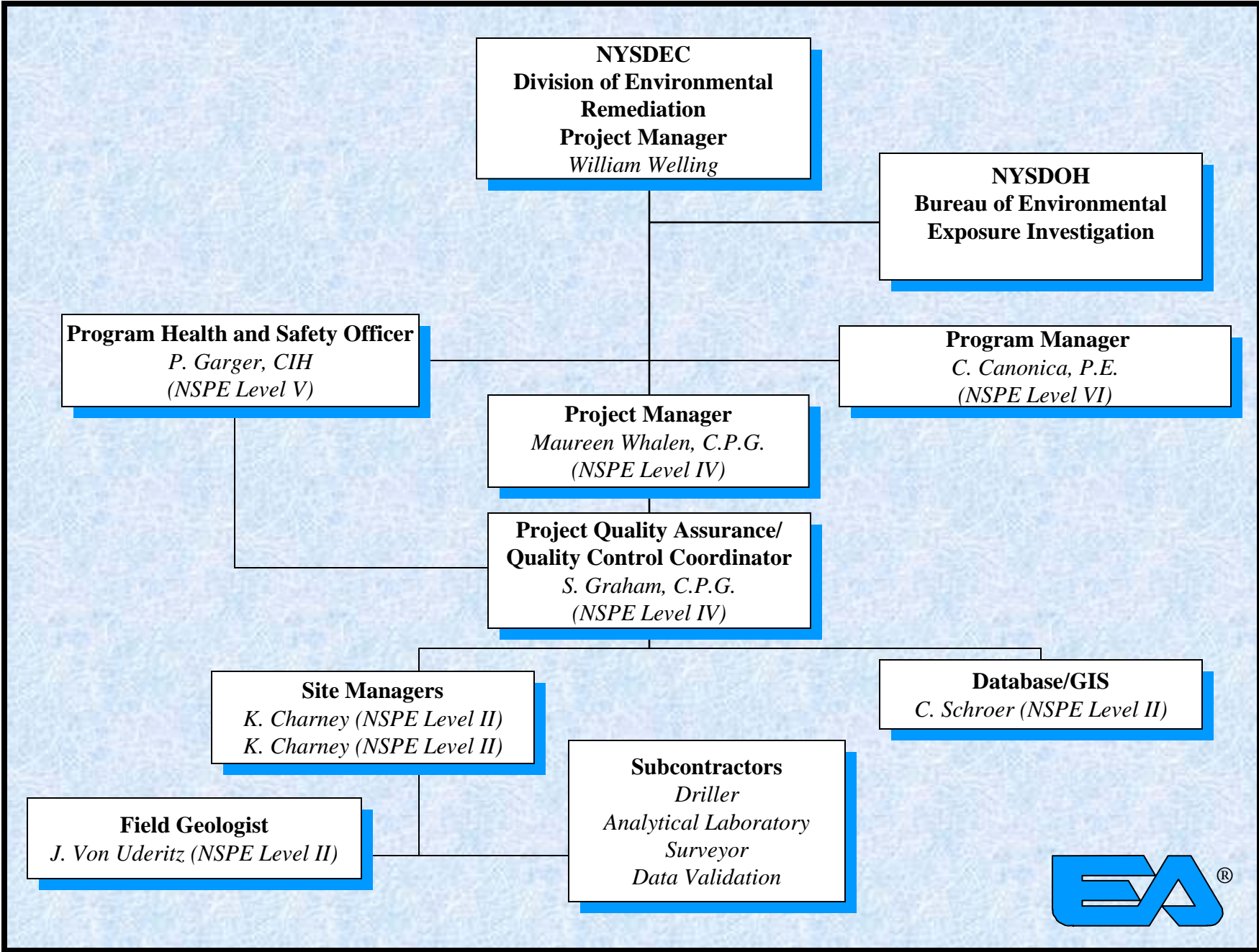
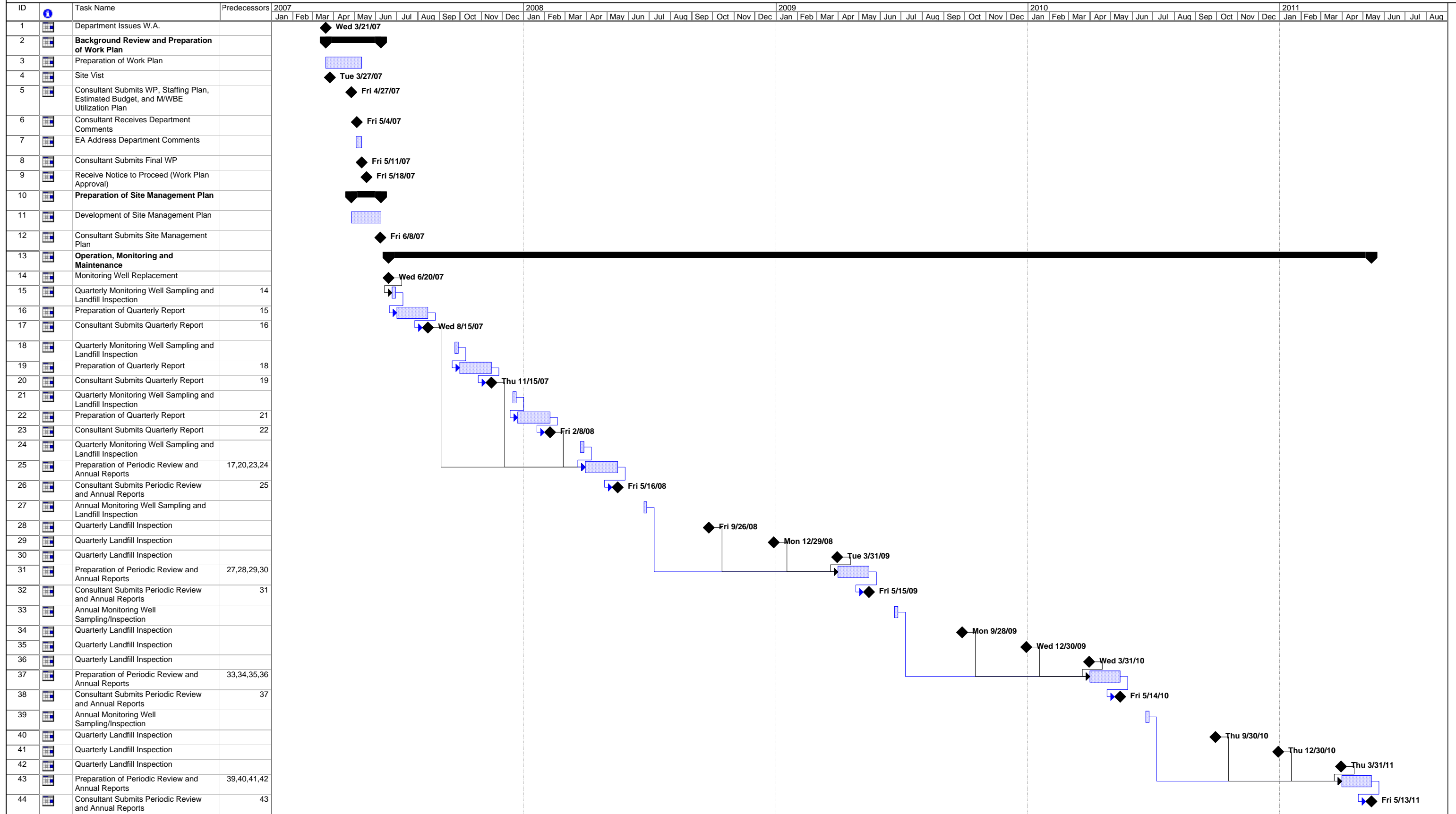


FIGURE 2. PROJECT ORGANIZATION CHART FOR WILLIAM BENSON LANDFILL SITE



Project: Benson Landfill Schedule
 Date: Tue 5/22/07

Task: Progress Summary External Tasks Deadline Split

Milestone: Project Summary: External Mile

Appendix A

Work Assignment Budget Schedule 2.11

Schedule 2.11 (a)

Summary of Work Assignment Price

Work Assignment Number

D004441-4

1)	Direct Salary Costs (Schedules 2.10(a) and 2.11(b))	\$24,337
2)	Indirect Costs (Schedule 2.10(g))	\$37,101
3)	Direct Non-Salary Costs (Schedule 2.10(b)(c)(d) and 2.11(c)(d))	\$10,880
4)	Subcontract Costs	
	Cost-Plus-Fixed-Fee Subcontracts (Schedule 2.10(e) and 2.11(e))	

	<u>Name of Subcontractor</u>	<u>Services To Be Performed</u>	<u>Subcontract Price</u>
	i)	OM P. Popli, P.E., L.S., P.C.	\$2,179
	ii)		\$0
A)	Total Cost-Plus-Fixed-Fee Subcontracts		\$2,179

Unit Price Subcontracts (Schedule 2.10(f) and 2.11(f))

	<u>Name of Subcontractor</u>	<u>Services To Be Performed</u>	<u>Subcontract Price</u>	
	i)	Mitkem Corporation	Laboratory Analyses	\$45,563
	ii)	EDS	Data validation	\$1,950
	iii)	Nothnagle	Drilling Services	\$2,765
B)	Total Unit Price Subcontracts		\$50,278	

5)	Subcontract Management Fee	\$2,376
6)	Total Subcontract Costs (Lines 4A + 4B + 5)	\$54,832
7)	Fixed Fee (Schedule 2.10(h))	\$4,301
8)	Total Work Assignment Price (Lines 1 + 2 + 3 + 6 + 7)	\$131,450

Engineer/Contract # EA Engineering, P.C. D004441
 Project Name William Benson Landfill
 Work Assignment No. D004441-4

Date Prepared 23-Apr-07

Schedule 2.11 (b)
Direct Labor Hours Budgeted

<i>Labor Classification</i>	<i>IX</i>	<i>VIII</i>	<i>VII</i>	<i>VI</i>	<i>V</i>	<i>IV</i>	<i>III</i>	<i>II</i>	<i>I</i>	<i>Admin.</i>	<i>Total Direct Labor Hrs.</i>
2007 Average Salary Rates		64.15	54.14	48.80	44.55	35.55	25.84	21.83	17.11		
2008 Average Salary Rates		66.07	55.76	50.26	45.89	36.62	26.62	22.48	17.62		
2009 Average Salary Rates		68.06	57.44	51.77	47.26	37.71	27.41	23.16	18.15		
2010 Average Salary Rates		70.10	59.16	53.33	48.68	38.85	28.24	23.85	18.70		
Task 1 - 2007				6		32		20		4	62
Task 1 - 2008										0	0
Task 1 - 2009										0	0
Task 1 - 2010										0	
<i>Task 1 Total Hours</i>	0	0	0	6	0	32	0	20	0	4	62
<i>Task 1 Direct Labor Total Cost</i>											\$1,935.44
Task 2 - 2007				6		32		20		4	62
Task 2 - 2008										0	0
Task 2 - 2009										0	0
Task 2 - 2010										0	
<i>Task 2 Total Hours</i>	0	0	0	6	0	32	0	20	0	4	62
<i>Task 2 Direct Labor Total Cost</i>											\$1,935.44
Task 3 - 2007				21	3	31		164	176	21	416
Task 3 - 2008				12	2	20		88	104	14	240
Task 3 - 2009				6	1	10		44	52	7	120
Task 3 - 2010				6	1	10		44	52	7	120
<i>Task 3 Total Hours</i>	0	0	0	45	7	71	0	340	384	49	896
<i>Task 3 Direct Labor Total Costs</i>											\$20,465.64
Total Hours 2007	0	0	0	33	3	95	0	204	176	29	540
Total Hours 2008	0	0	0	12	2	20	0	88	104	14	240
Total Hours 2009	0	0	0	6	1	10	0	44	52	7	120
Total Hours 2010	0	0	0	6	1	10	0	44	52	7	120
<i>Total Hours for the WA</i>											1,020
<i>Direct Labor Cost (\$) 2007</i>	\$0.00	\$0.00	\$0.00	\$1,610.40	\$133.65	\$3,377.25	\$0.00	\$4,453.32	\$3,011.36	\$510.35	\$13,096.33
<i>Direct Labor Cost (\$) 2008</i>	\$0.00	\$0.00	\$0.00	\$603.17	\$91.77	\$732.33	\$0.00	\$1,978.67	\$1,832.82	\$256.45	\$5,495.21
<i>Direct Labor Cost (\$) 2009</i>	\$0.00	\$0.00	\$0.00	\$310.63	\$47.26	\$377.15	\$0.00	\$1,019.02	\$943.90	\$132.07	\$2,830.04
<i>Direct Labor Cost (\$) 2010</i>	\$0.00	\$0.00	\$0.00	\$319.95	\$48.68	\$388.46	\$0.00	\$1,049.59	\$972.22	\$136.03	\$2,914.94
<i>Total Direct Labor Cost \$</i>											\$24,336.52

* For multiple years use one average salary rate row for each year and each years subtotal Labor Cost.

Engineer/Contract # EA Engineering, P.C. D004441
 Project Name William Benson Landfill
 Work Assignment No. D004441-4

Date Prepared 23-Apr-07

Schedule 2.11 (b-1)
Direct Administrative Labor Hours Budgeted

Labor Classification	IX	VIII	VII	VI	V	IV	III	II	I	Total No. of Direct Labor Hrs.
2007 Average Salary Rates*		64.15	54.14	48.80	44.55	35.55	25.84	21.83	17.11	
2008 Average Salary Rates*		66.07	55.76	50.26	45.89	36.62	26.62	22.48	17.62	
2009 Average Salary Rates*		68.06	57.44	51.77	47.26	37.71	27.41	23.16	18.15	
2010 Average Salary Rates*		70.10	59.16	53.33	48.68	38.85	28.24	23.85	18.70	
Task 1 - 2007									4	4
Task 1 - 2008										0
Task 1 - 2009										0
Task 1 - 2010										0
<i>Task 1 Total Hours</i>	0	0	0	0	0	0	0	0	4	4
<i>Task 1 Direct Administrative Total Cost</i>										\$68.44
Task 2 - 2007									4	4
Task 2 - 2008										0
Task 2 - 2009										0
Task 2 - 2010										0
<i>Task 2 Total Hours</i>	0	0	0	0	0	0	0	0	4	4
<i>Task 2 Direct Administrative Total Cost</i>										\$68.44
Task 3 - 2007								3	18	21
Task 3 - 2008								2	12	14
Task 3 - 2009								1	6	7
Task 3 - 2010								1	6	7
<i>Task 3 Total Hours</i>	0	0	0	0	0	0	0	7	42	49
<i>Task 3 Direct Administrative Total Costs</i>										\$898.02
Total Hours - 2007	0	0	0	0	0	0	0	3	26	29
Total Hours - 2008	0	0	0	0	0	0	0	2	12	14
Total Hours - 2009	0	0	0	0	0	0	0	1	6	7
Total Hours - 2010	0	0	0	0	0	0	0	1	6	7
<i>Total Hours for the WA</i>										57
<i>Direct Labor Cost (\$) 2007</i>	\$0.00	\$0.00	\$0.00	\$0.00	\$0.00	\$0.00	\$0.00	\$65.49	\$444.86	\$510.35
<i>Direct Labor Cost (\$) 2008</i>	\$0.00	\$0.00	\$0.00	\$0.00	\$0.00	\$0.00	\$0.00	\$44.97	\$211.48	\$256.45
<i>Direct Labor Cost (\$) 2009</i>	\$0.00	\$0.00	\$0.00	\$0.00	\$0.00	\$0.00	\$0.00	\$23.16	\$108.91	\$132.07
<i>Direct Labor Cost (\$) 2010</i>	\$0.00	\$0.00	\$0.00	\$0.00	\$0.00	\$0.00	\$0.00	\$23.85	\$112.18	\$136.03
<i>Total Direct Administrative Labor Cost (\$)</i>										\$1,034.90

* For multiple years use one average salary rate row for each year and each years subtotal Labor Cost.

Contract/Project administrative hours would include (subject to contract allowability) but not necessarily be limited to the following activities:

1) Work Plan Budget Development

- Conflict of Interest Check
- Budget schedules & supporting documentation
- 2) Review work assignment (WA) progress**
- Conduct progress reviews
- Prepare monthly project report
- Update WA progress schedule
- Prepare M/WBE Utilization Report

3) Contractor Application for Payment (CAP)

- Oversee and prepare monthly CAP

4) Program Management

- Prepare monthly cost control report
- Cost control reviews
- Staffing plans
- Manage subcontracts
- NSPE list update
- Equipment inventory

5) Miscellaneous

- Conduct Health and Safety Reviews
- Word processing and graphic artists
- Report editing

Contract/Project administration hours would not include:

- QA/QC reviews
- Technical oversight by management
- Develop subcontracts
- Work plan development
- Review of deliverables

Schedule 2.11 (c)

Direct Non-Salary Costs

Engineer: EA Engineering, P.C.

Contract ID: D004441

Project Name: William Benson Landfill

Work Assignment No.: D004441-4

Item	Maximum Reimbursement Rate	(Specify Unit)	Est. No. of Units	Total Estimated Cost (\$)
A) In-house Costs				
1) 8.5 x 11 print/copy (black and white)	\$0.05	\$/page	600	\$30.00
2) 8.5 x 11 print/copy (color)	\$0.75	\$/page	24	\$18.00
3) Microcomputer GIS (Arc/info)	\$6.25	\$/hour	0	\$0.00
4) Microcomputer Graphics/CADD	\$1.50	\$/hour	0	\$0.00
5) Personal Protective Equipment (Level C)	\$27.00	\$/man-day	0	\$0.00
6) Personal Protective Equipment (Level D)	\$13.00	\$/man-day	30	\$390.00
7) Equipment Purchased Under Contract	\$0.00	Lump Sum	1	\$0.00
8) Consultant Owned Equipment	\$0.00	Lump Sum	1	\$0.00
9) Vendor Rented Equipment	\$3,850.00	Lump Sum	1	\$3,850.00
10) Site Dedicated Equipment	\$0.00	Lump Sum	1	\$0.00
11) Consumable Supplies	\$1,261.40	Lump Sum	1	\$1,261.40
12) Shipping - Submittals	\$50.00	each	2	\$100.00
13) Shipping - Samples	\$50.00	each	28	\$1,400.00
			In-house Costs Total	\$7,049.40
B) Miscellaneous				
Travel:				
Per diem: Livingston	\$39.00	day	37	\$1,443.00
Lodging: Livingston	\$60.00	night	14	\$840.00
Local Mileage:	\$0.485	mile	3190	\$1,547.15
			Miscellaneous Total	\$3,830.15
Total Direct Non-Salary Costs				<u>\$10,879.55</u>

*See Schedule 2.10(b) for rates.

Schedule 2.11(d) 2

Maximum Reimbursement Rates for Consultant Owned Equipment

Item	Purchase Price (\$ x 85%)	Usage Rate* (\$/Unit of Time)	Capital Recovery** Rate (\$/Unit of Time)	O&M Rate (\$/Unit of Time)	Est. Usage (Unit of Time)	Est. Usage Cost (\$) (Col. 3 x 6)
						\$0.00
						\$0.00
					TOTAL	\$0.00

Schedule 2.11(d) 3

Maximum Reimbursement Rates for Vendor-Rented Equipment

Item	Reimbursement Rate (\$)	Unit of Time	Est. Usage (Unit of Time)	Est. Usage Cost (\$) (Col. 2 x 3)
Task 3				
GeoPump2 Peristaltic Pump	\$25.00	day	14	\$350.00
MiniRAE 2000 with 10.67 eV Lamp-Datalogging	\$75.00	day	14	\$1,050.00
YSI 6820 with Flow Cell with NEW 650 Display	\$150.00	day	14	\$2,100.00
Industrial Scientific iTX Gas Monitor LEL/O2/CO/H2S	\$50.00	day	7	\$350.00
			TOTAL	<u>\$3,850.00</u>

* Reimbursement will be made at the Maximum Reimbursement rate or the actual rental rate, whichever is less.

Work Assignment No. D004441-4

Schedule 2.11(d) 4

Site-Dedicated Equipment

<u>Item</u>	<u>Estimated Quantity</u>	<u>Unit Cost (\$)</u>	<u>Total Budgeted Cost (Col . 2 x 3) (\$)</u>
-------------	---------------------------	-----------------------	---

		TOTAL	<u>\$0.00</u>
--	--	--------------	----------------------

Work Assignment No. D004441-4

Schedule 2.11(d) 5

Consumable Supplies

Item	Estimated Quantity	Unit Cost (\$)	Total Budgeted Cost (Col . 2 x 3) (\$)
Task 3			
Teflon tubing (feet)	150	\$1.50	\$225.00
Polyethylene tubing (500-foot)	7	\$100.00	\$700.00
Nitrile Gloves	2	\$20.00	\$40.00
Field Logbook	1	\$18.00	\$18.00
Low Value Equipment (field hours)	348	\$0.80	\$278.40
		TOTAL	\$1,261.40

Schedule 2.11(e)

Cost-Plus-Fixed-Fee Subcontracts

Work Assignment Number D004441-4

Name of Subcontractor	Services to be Performed	Subcontract Price
OM P. Popli, P.E., L.S., P.C.	Surveying Professional Services	\$2,178.68
<i>A) Direct Salary Costs</i>		

Professional Responsibility Level	Labor Classification	Ave. Reimbursement Rate (\$/Hr.)	Max. Reimbursement Rate (\$/Hr.)	Est. No. of Hours	Total Est. Direct Salary Cost (Ave. Reimb. Rate x Est. # of Hrs.)
Task 3					
III (A)	Sr. Land Surveyor III (A)	\$30.80	\$32.50	3	\$92.40
I (N)	CAD Drafter 1 (I (N))	\$17.50	\$20.00	3	\$52.50
III (N)	Survey Tech 3 (III N)	\$25.50	\$30.80	4	\$102.00
II (N)	Survey Tech 2 (II N)	\$20.00	\$24.00	12	\$240.00
III (N)	Survey Tech 3 (III N)	\$25.50	\$30.80	12	\$306.00

Total Direct Salary Costs \$792.90

Footnotes:

- 1) The labor rate averages and maximums shall be adjusted by a rate equal to the increase in the CPI index CUURA101SAO-"All Urban Consumers-New York-Northern N.J.-Long Island" for the previous year. This index is published by the U.S. Department of Labor's Bureau of Labor Statistics. The adjustment will be calculated every January and will be effective for subsequent work assignment billing and budgeting purposes.
- 2) Schedule 2.10(a) may be re-negotiated after four (4) years at the request of either party. Any revision as a result of renegotiation will be subject to the approval of the Office of the State Comptroller.
- 3) The maximum annual escalation is limited to 5%.
- 4) Reimbursement will be limited to the lesser of either of the individual's actual hourly rate or the maximum rate for each labor category.
- 5) Reimbursement will be limited to the maximum reimbursement rate for the professional responsibility level of the actual work performed.
- 6) Only those labor classifications indicated with an asterisk will be entitled to overtime.
- 7) Reimbursement for technical time of principals, owners, and officers will be limited to the maximum reimbursement rate of that category, the actual hourly labor rate paid, or the State M-6 rate, whichever is lower.
- 8) Maximum reimbursement rates may be exceeded for work assignment activities that are under the jurisdiction of the Schedule of Prevailing Wage Rates set by the New York State Department of Labor.

Schedule 2.11(e)

(continued)

B) Indirect Costs

Indirect costs shall be paid based on a percentage of direct salary costs incurred which shall not exceed a maximum of **117.00%** or the actual rate calculated in accordance with 48 CFR Federal Acquisition Regulation, whichever is lower.

Amount budgeted for indirect costs is:

Total Indirect Costs \$927.69

C) Maximum Reimbursement Rates for Direct Non-Salary Costs

<i>Item</i>	<i>Max. Reimbursement Rate (Specify Unit)</i>	<i>Est. # of Units</i>	<i>Total Estimated Cost</i>
1) Travel			
Per diem: Livingston	\$39.00 day	0	\$0.00
Lodging: Livingston	\$60.00 night	0	\$0.00
Local Mileage:	\$0.485 mile	0	\$0.00
Survey Van	\$100.00 day	1	\$100.00
		Travel Total	\$100.00
2) Supplies			
Level D PPE	\$50.00 day	2	\$100.00
		Supplies Total	\$100.00
Total Direct Non-Salary Costs			\$200.00

D) Fixed Fee 15.00%

The fixed fee is:

Total Fixed Fee \$258.09

Schedule 2.11(e)

Cost-Plus-Fixed-Fee Subcontracts

Work Assignment Number D004441-4

Name of Subcontractor	Services to be Performed	Subcontract Price
A) <i>Direct Salary Costs</i>	Engineering Professional Services	\$0.00

Professional Responsibility Level	Labor Classification	Ave. Reimbursement Rate (\$/Hr.)	Max. Reimbursement Rate (\$/Hr.)	Est. No. of Hours	Total Est. Direct Salary Cost (Ave. Reimb. Rate x Est. # of Hrs.)
					\$0.00
Total Direct Salary Costs					\$0.00

Footnotes:

- 1) The labor rate averages and maximums shall be adjusted by a rate equal to the increase in the CPI index CUURA101SAO-"All Urban Consumers-new York-Northern N.J.-Long Island" for the previous year. This index is published by the U.S. Department of Labor's
- 2) Schedule 2.10(a) may be re-negotiated after four (4) years at the request of either party. Any revision as a result of renegotiation will be subject to the approval of the Office of the State Comptroller.
- 3) The maximum annual escalation is limited to 5%.
- 4) Reimbursement will be limited to the lesser of either of the individual's actual hourly rate or the maximum rate for each labor category.
- 5) Reimbursement will be limited to the maximum reimbursement rate for the professional responsibility level of the actual work performed.
- 6) Only those labor classifications indicated with an asterisk will be entitled to overtime.
- 7) Reimbursement for technical time of principals, owners, and officers will be limited to the maximum reimbursement rate of that category, the actual hourly labor rate paid, or the State M-6 rate, whichever is lower.
- 8) Maximum reimbursement rates may be exceeded for work assignment activities that are under the jurisdiction of the Schedule of Prevailing Wage Rates set by the New York State Department of Labor.

Schedule 2.11(e)
(continued)

B) Indirect Costs

Indirect costs shall be paid based on a percentage of direct salary costs incurred which shall not exceed a maximum of #N/A or the actual rate calculated in accordance with 48 CFR Federal Acquisition Regulation, whichever is lower.

Amount budgeted for indirect costs is:

Total Indirect Costs \$0.00

C) Maximum Reimbursement Rates for Direct Non-Salary Costs

<i>Item</i>		<i>Max. Reimbursement Rate (Specify Unit)</i>		<i>Est. # of Units</i>	<i>Total Estimated Cost</i>
1) Travel					
Per diem:	Monroe County	\$44.00	day	0	\$0.00
Lodging:	Monroe County	\$87.00	night	0	\$0.00
Local Mileage:		\$0.485	mile	0	\$0.00
				Travel Total	\$0.00
2) Supplies					\$0.00
					\$0.00
				Supplies Total	\$0.00
Total Direct Non-Salary Costs					\$0.00

D) Fixed Fee #N/A

The fixed fee is:

Total Fixed Fee \$0.00

Schedule 2.11(f)

Unit Price Subcontracts

Work Assignment Number D004441-4

Name of Subcontractor
Mitkem Corporation

Services to be Performed
Laboratory Analyses

Subcontract Price
\$45,563.00

Management Fee
\$2,278.15

Item	Max. Reimbursement Rate (Specify Unit)	Est. No. of Units	Total Est. Cost
Task 3			
Groundwater Analysis	\$6,509.00 1 event	7	\$45,563.00
Subtotal Subcontract Price			<u>\$45,563.00</u>
Subcontract Management Fee			<u>\$2,278.15</u>
TOTAL			<u>\$47,841.15</u>

Schedule 2.11(f)

Unit Price Subcontracts

Work Assignment Number D004441-4

Name of Subcontractor
0

Services to be Performed
Laboratory Air Analyses

Subcontract Price
\$0.00

Management Fee
\$0.00

Item	Max. Reimbursement Rate (Specify Unit)	Est. No. of Units	Total Est. Cost
			\$0.00
Subtotal Subcontract Price			<u>\$0.00</u>
Subcontract Management Fee			<u>\$0.00</u>
TOTAL			<u>\$0.00</u>

Schedule 2.11(f)

Unit Price Subcontracts

Work Assignment Number D004441-4

Name of Subcontractor	Services to be Performed	Subcontract Price	Management Fee
EDS	Data validation	\$1,950.00	\$97.50
Item	Max. Reimbursement Rate (Specify Unit)	Est. No. of Units	Total Est. Cost
Task 3			
Sampling Event	\$975.00 event	2	\$1,950.00
Subtotal Subcontract Price			<u>\$1,950.00</u>
Subcontract Management Fee			<u>\$97.50</u>
TOTAL			<u>\$2,047.50</u>

Schedule 2.11(f)

Unit Price Subcontracts

Work Assignment Number D004441-4

Name of Subcontractor Nothnagle	Services to be Performed	Subcontract Price \$2,765.00	Management Fee \$0.00
---	---------------------------------	--	---------------------------------

Item	Max. Reimbursement Rate (Specify Unit)	Est. No. of Units	Total Est. Cost
Task 3			
Montitoring well replacement/repair	\$2,765.00 event	1	\$2,765.00
Subtotal Subcontract Price			<u>\$2,765.00</u>
Subcontract Management Fee			<u>\$0.00</u>
TOTAL			<u>\$2,765.00</u>

SCHEDULE 2.11(g)

**MONTHLY COST CONTROL REPORT
SUMMARY OF FISCAL INFORMATION**

Engineer: EA Engineering, P.C.
Contract No: D004441
Project Name: William Benson Landfill
Work Assignment No.: D004441
Task#/Name: Summary
Complete:

Page: 1 of 1
Date Prepared: 23-Apr-07
Billing Period:
Invoice No.:

<i>Expenditure Category</i>	<i>A</i>	<i>B</i>	<i>C</i>	<i>D</i>	<i>E</i>	<i>F</i>	<i>G</i>	<i>H</i>
	<i>Costs Claimed This Period</i>	<i>Paid To Date</i>	<i>Total Disallowed To Date</i>	<i>Total Costs Incurred to Date (A+B+C)</i>	<i>Estimated Costs To Completion</i>	<i>Estimated Total Work Assignment Price (A+B+E)</i>	<i>Approved Budget</i>	<i>Estimated Under/Over (G-F)</i>
1 Direct Salary Costs				\$0.00		\$24,336.52		(\$24,336.52)
2 Indirect Costs				\$0.00		\$37,101.02		(\$37,101.02)
3 Subtotal Direct Salary Costs and Indirect Costs				\$0.00		\$61,437.54		(\$61,437.54)
4 Travel				\$0.00		\$3,830.15		(\$3,830.15)
5 Other Non-Salary Costs				\$0.00		\$7,049.40		(\$7,049.40)
6 Subtotal Direct Non-Salary Costs				\$0.00		\$10,879.55		(\$10,879.55)
7 Subcontractors				\$0.00		\$54,832.33		(\$54,832.33)
8 Total WA Cost				\$0.00		\$127,149.42		(\$127,149.42)
9 Fixed Fee 7%				\$0.00		\$4,300.63		(\$4,300.63)
10 Total WA Price				\$0.00		\$131,450.05		(\$131,450.05)

Program Manager(Engineer) _____

Date: _____

SCHEDULE 2.11(g)

**MONTHLY COST CONTROL REPORT
SUMMARY OF FISCAL INFORMATION**

Engineer: EA Engineering, P.C.
Contract No: D004441
Project Name: William Benson Landfill
Work Assignment No.: D004441-4
Task#/Name: Task 1 - Work Plan Development
Complete:

Page: 1 of 1
Date Prepared: 23-Apr-07
Billing Period:
Invoice No.

<i>Expenditure Category</i>	<i>A</i>	<i>B</i>	<i>C</i>	<i>D</i>	<i>E</i>	<i>F</i>	<i>G</i>	<i>H</i>
	<i>Costs Claimed This Period</i>	<i>Paid To Date</i>	<i>Total Disallowed To Date</i>	<i>Total Costs Incurred to Date (A+B+C)</i>	<i>Estimated Costs To Completion</i>	<i>Estimated Total Work Assignment Price (A+B+E)</i>	<i>Approved Budget</i>	<i>Estimated Under/Over (G-F)</i>
1 Direct Salary Costs				\$0.00		\$1,935.44		(\$1,935.44)
2 Indirect Costs				\$0.00		\$2,950.58		(\$2,950.58)
3 Subtotal Direct Salary Costs and Indirect Costs				\$0.00		\$4,886.02		(\$4,886.02)
4 Travel				\$0.00		\$131.35		(\$131.35)
5 Other Non-Salary Costs				\$0.00		\$63.00		(\$63.00)
6 Subtotal Direct Non-Salary Costs				\$0.00		\$194.35		(\$194.35)
7 Subcontractors				\$0.00		\$0.00		\$0.00
8 Total WA Cost				\$0.00		\$5,080.37		(\$5,080.37)
9 Fixed Fee 7%				\$0.00		\$342.02		(\$342.02)
10 Total WA Price				\$0.00		\$5,422.39		(\$5,422.39)

Program Manager(Engineer) _____

Date: _____

SCHEDULE 2.11(g)

**MONTHLY COST CONTROL REPORT
SUMMARY OF FISCAL INFORMATION**

Engineer: EA Engineering, P.C.
Contract No: D004441
Project Name: William Benson Landfill
Work Assignment No.: D004441-4
Task#/Name: Task 2 - Field Activities
Complete:

Page: 1 of 1
Date Prepared: 23-Apr-07
Billing Period:
Invoice No.:

<i>Expenditure Category</i>	<i>A</i>	<i>B</i>	<i>C</i>	<i>D</i>	<i>E</i>	<i>F</i>	<i>G</i>	<i>H</i>
	<i>Costs Claimed This Period</i>	<i>Paid To Date</i>	<i>Total Disallowed To Date</i>	<i>Total Costs Incurred to Date (A+B+C)</i>	<i>Estimated Costs To Completion</i>	<i>Estimated Total Work Assignment Price (A+B+E)</i>	<i>Approved Budget</i>	<i>Estimated Under/Over (G-F)</i>
1 Direct Salary Costs				\$0.00		\$1,935.44		(\$1,935.44)
2 Indirect Costs				\$0.00		\$2,950.58		(\$2,950.58)
3 Subtotal Direct Salary Costs and Indirect Costs				\$0.00		\$4,886.02		(\$4,886.02)
4 Travel				\$0.00		\$0.00		\$0.00
5 Other Non-Salary Costs				\$0.00		\$85.00		(\$85.00)
6 Subtotal Direct Non-Salary Costs				\$0.00		\$85.00		(\$85.00)
7 Subcontractors				\$0.00		\$0.00		\$0.00
8 Total WA Cost				\$0.00		\$4,971.02		(\$4,971.02)
9 Fixed Fee 7%				\$0.00		\$342.02		(\$342.02)
10 Total WA Price				\$0.00		\$5,313.04		(\$5,313.04)

Program Manager(Engineer) _____

Date: _____

SCHEDULE 2.11(g)

**MONTHLY COST CONTROL REPORT
SUMMARY OF FISCAL INFORMATION**

Engineer: EA Engineering, P.C.
Contract No.: D004441
Project Name: William Benson Landfill
Work Assignment No.: D004441-4
Task#/Name: Task 3 - Summary Reports
Complete:

Page: 1 of 1
Date Prepared: 23-Apr-07
Billing Period:
Invoice No.:

<i>Expenditure Category</i>	<i>A</i>	<i>B</i>	<i>C</i>	<i>D</i>	<i>E</i>	<i>F</i>	<i>G</i>	<i>H</i>
	<i>Costs Claimed This Period</i>	<i>Paid To Date</i>	<i>Total Disallowed To Date</i>	<i>Total Costs Incurred to Date (A+B+C)</i>	<i>Estimated Costs To Completion</i>	<i>Estimated Total Work Assignment Price (A+B+E)</i>	<i>Approved Budget</i>	<i>Estimated Under/Over (G-F)</i>
1 Direct Salary Costs				\$0.00		\$20,465.64		(\$20,465.64)
2 Indirect Costs				\$0.00		\$31,199.86		(\$31,199.86)
3 Subtotal Direct Salary Costs and Indirect Costs				\$0.00		\$51,665.50		(\$51,665.50)
4 Travel				\$0.00		\$3,698.80		(\$3,698.80)
5 Other Non-Salary Costs				\$0.00		\$6,901.40		(\$6,901.40)
6 Subtotal Direct Non-Salary Costs				\$0.00		\$10,600.20		(\$10,600.20)
7 Subcontractors				\$0.00		\$54,832.33		(\$54,832.33)
8 Total WA Cost				\$0.00		\$117,098.03		(\$117,098.03)
9 Fixed Fee 7%				\$0.00		\$3,616.59		(\$3,616.59)
10 Total WA Price				\$0.00		\$120,714.62		(\$120,714.62)

Program Manager(Engineer) _____

Date: _____

SCHEDULE 2.11(g) - Supplemental

Cost Control Report For Subcontracts

Engineer: EA Engineering, P.C.
Contract No.: D004441
Project Name: William Benson Landfill
Work Assignment No.: D004441-4

Page: 1 of 1
Date Prepared: 23-Apr-07
Billing Period:
Invoice No.:

<i>Subcontract Name</i>	<i>A Subcontract Costs Claimed this Application Inc. Resubmittals</i>	<i>B Subcontract Costs Approved for Payment on Previous Applications</i>	<i>C Total Subcontract Costs to Date (A plus B)</i>	<i>D Subcontract Approved Budget</i>	<i>E Management Fee Budget</i>	<i>F Management Fee Paid</i>	<i>G Total Costs to Date (C plus F)</i>
1 Mitkem Corporation			\$0.00	\$45,563.00	\$2,278.15		\$0.00
2 EDS			\$0.00	\$1,950.00	\$97.50		\$0.00
3 Nothnagle			\$0.00	\$2,765.00	\$0.00		
4 OM P. Popli, P.E., L.S., P.C.			\$0.00	\$2,178.68	\$0.00		
5 TOTALS	\$0.00	\$0.00	\$0.00	\$47,513.00	\$2,375.65		\$0.00

Project Manager _____

Date: _____

Notes:

- 1) Costs listed in Columns A, B, C, & D do not include any management fee costs.
- 2) Management fee is applicable to only properly procured, satisfactorily completed, unit price subcontracts over \$10,000.
- 3) Line 11, Column G should equal Line 7 (Subcontractors), Column D of Summary Cost Control Report.

SCHEDULE 2.11(h)

**MONTHLY COST CONTROL REPORT
SUMMARY OF LABOR HOURS**

Number of Direct Labor Hours Expended to Date/Estimated Number of Direct Labor Hours to Completion

Engineer: EA Engineering, P.C.
Contract No.: D004441
Project Name: William Benson Landfill
Work Assignment No.: D004441-4

Date Prepared: 23-Apr-07
Billing Period:
Invoice No.:

NSPE Labor Classification	IX Exp/Est*		VIII Exp/Est		VII Exp/Est		VI Exp/Est		V Exp/Est		IV Exp/Est		III Exp/Est		II Exp/Est		I Exp/Est		Total No. of Direct Labor Hours Exp/Est	
Task 1	0.0		0.0		0.0		6.0		0.0		32.0		0.0		20.0		4.0		62.0	
Task 2	0.0		0.0		0.0		6.0		0.0		32.0		0.0		20.0		4.0		62.0	
Task 3	0.0		0.0		0.0		45.0		7.0		71.0		0.0		347.0		426.0		896.0	
																			0.0	
																			0.0	
																			0.0	
																			0.0	
																			0.0	
																			0.0	
																			0.0	
																			0.0	
																			0.0	
																			0.0	
																			0.0	
Total Hours	0.0	0.0	0.0	0.0	0.0	0.0	0.0	57.0	0.0	7.0	0.0	135.0	0.0	0.0	0.0	387.0	0.0	434.0	0.0	1020.0

* Expended/Estimated

Schedule 2.11(i)

**Monthly Cost Control Report
Equipment Inventory Control Form***

Engineer EA Engineering, P.C.

Contract No. D004441

1) Equipment Description _____
Purchase Date _____
Purchase Price _____
Dates & Location of Use Since Last Report (Identify WA) _____
Present Storage Location _____
Condition of Equipment _____
Responsible Person and Phone No. _____

2) Equipment Description _____
Purchase Date _____
Purchase Price _____
Dates & Location of Use Since Last Report (Identify WA) _____
Present Storage Location _____
Condition of Equipment _____
Responsible Person and Phone No. _____

3) Equipment Description _____
Purchase Date _____
Purchase Price _____
Dates & Location of Use Since Last Report (Identify WA) _____
Present Storage Location _____
Condition of Equipment _____
Responsible Person and Phone No. _____

4) Equipment Description _____
Purchase Date _____
Purchase Price _____
Dates & Location of Use Since Last Report (Identify WA) _____
Present Storage Location _____
Condition of Equipment _____
Responsible Person and Phone No. _____

* This form must be completed for all Department owned equipment in the custody of the Engineer and submitted as part of the Monthly Cost Control Report.

Appendix B

Subcontractor Quote – Data Validator

Data Validation/DUSR

Type of Sample	Field Samples	EPA Method	Unit Cost	Subtotal Cost
Validation of TCL Pesticides data (aqueous)				
4 quarterly Events - 1st year (2007-early 2008)	64	8081	\$15	\$960
annual event 2nd year (2008)	16	8081	\$15	\$240
annual event 3rd year (2009)	16	8081	\$15	\$240
annual event 4th year (2010)	16	8081	\$15	\$240
Validation - TAL Metals data (aqueous)				
4 quarterly Events - 1st year	64	6010	\$15	\$960
annual event 2nd year	16	6010	\$15	\$240
annual event 3rd year	16	6010	\$15	\$240
annual event 4th year	16	6010	\$15	\$240
Validation of VOC data (aqueous)				
4 quarterly Events - 1st year	68	8260B	\$15	\$1,020
annual event 2nd year	17	8260B	\$15	\$255
annual event 3rd year	17	8260B	\$15	\$255
annual event 4th year	17	8260B	\$15	\$255
Validation of SVOC data (aqueous)				
4 quarterly Events - 1st year	64	8270C	\$15	\$960
annual event 2nd year	16	8270C	\$15	\$240
annual event 3rd year	16	8270C	\$15	\$240
annual event 4th year	16	8270C	\$15	\$240
Total Cost				\$6,825
<u>Additional Requirements:</u>				
1. A DUSR will be provide within 30 days of receipt of each data package.				
2. The data will be validated in accordance with Work Element IV - Analytical Quality Assurance/Quality Control Activities of NYSDEC Standby Contract D004441.				