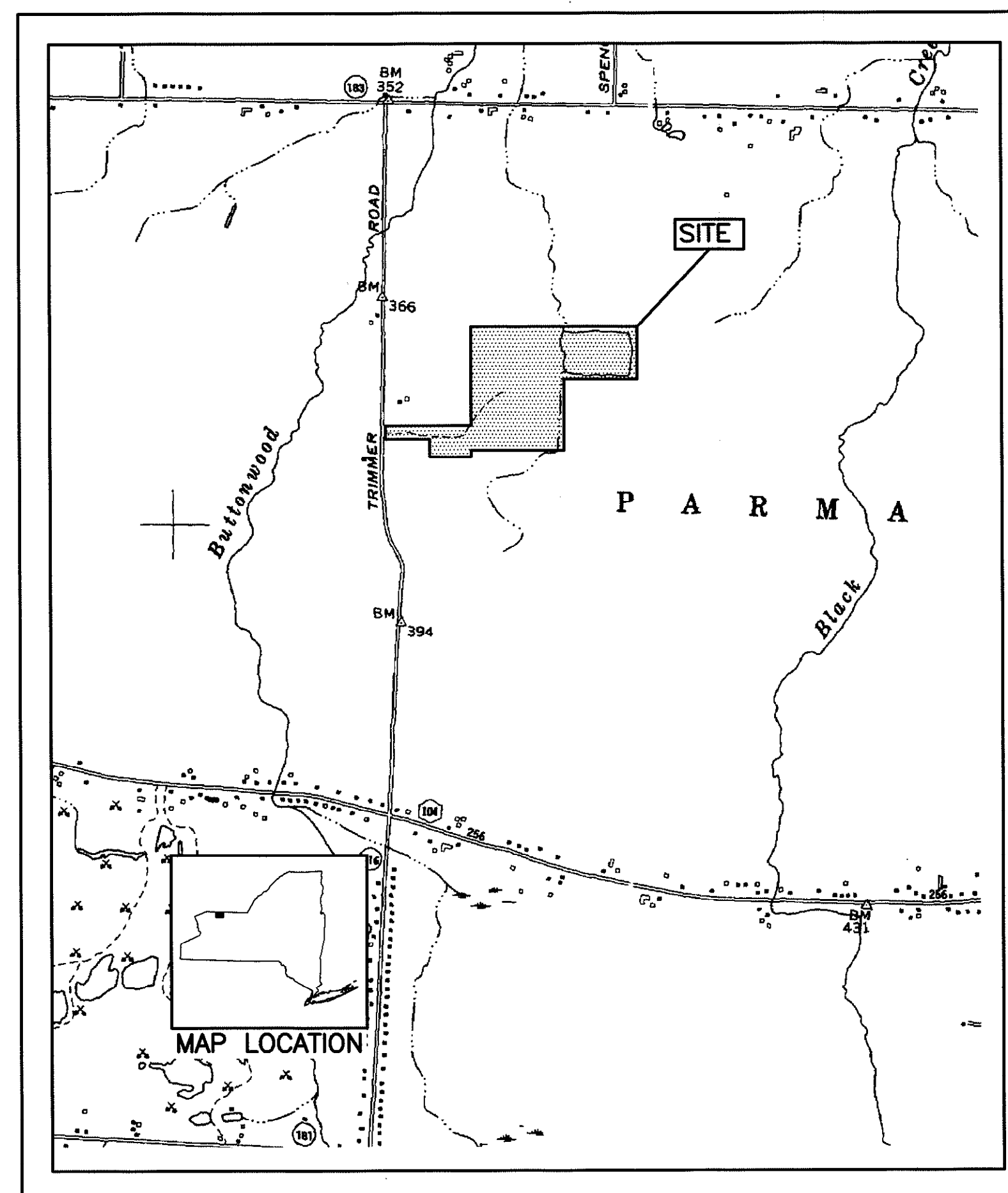


**NEW YORK STATE
DEPARTMENT OF ENVIRONMENTAL CONSERVATION
GENERAL CONSTRUCTION CONTRACT NO. D006373**

**TRIMMER ROAD LANDFILL SITE
TOWN OF PARMA, NEW YORK
REMEDIAL CONSTRUCTION**

SITE NO. 8-28-012

OCTOBER 2006



LOCATION MAP
N.T.S.

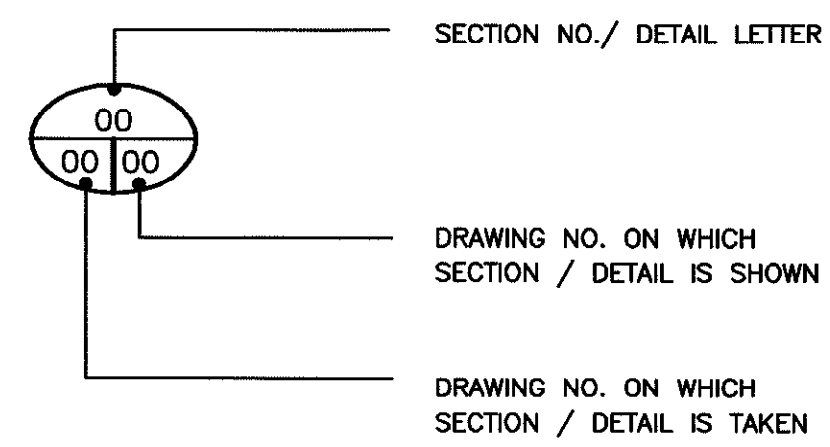
LIST OF DRAWINGS

<u>DRAWING NO.</u>	<u>DRAWING TITLE</u>
1	SYMBOLS AND ABBREVIATIONS
2	BOUNDARY AND TOPOGRAPHIC MAP
3	OVERALL SITE PLAN
4	VEGETATION PLAN – VEGETATIVE BUFFERS NO. 1, 2 AND 3
5	DETAILS I

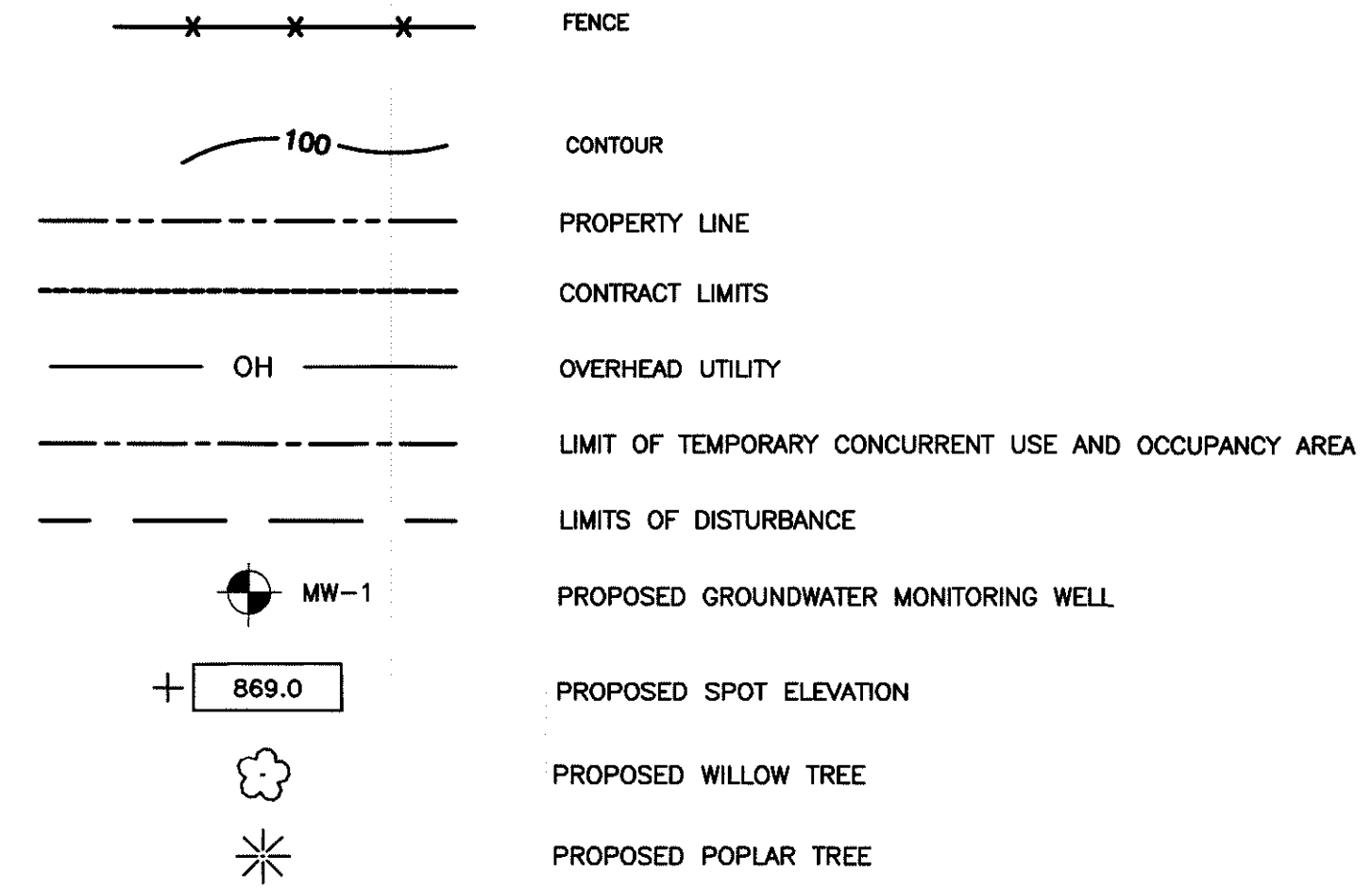
ABBREVIATIONS

ADD'L	ADDITIONAL	GC	GENERAL CONTRACTOR
AFF	ABOVE FINISHED FLOOR	GS	GALVANIZED STEEL
ALUM	ALUMINUM	HDPE	HIGH DENSITY POLYETHYLENE
@	AT	HP	HORSEPOWER
&	AND	H.P.	HIGH POINT
B,BOT	BOTTOM	ID	INSIDE DIAMETER
BC	BOTTOM CURB	INF	INFLUENT
BLDG	BUILDING	INT	INTERIOR
BM	BASEMENT	INV. EL./I.E.	INVERT ELEVATION
C.I.	CAST IRON	IJ	ISOLATION JOINT
CJ	CONSTRUCTION JOINT	LBS, #	POUNDS
CL	CLEARANCE	LF	LINEAR FEET
CL	CENTERLINE	LP	LOW POINT
CMU	CONCRETE MASONRY UNIT	MAC	MACADAM
C.O.	CLEAN OUT	MECH	MECHANICAL
COL	COLUMN	MFTR	MANUFACTURER
CONC	CONCRETE	MIN	MINIMUM
CONN	CONNECTION	MH	MANHOLE
CONT	CONTINUE, CONTINUOUS	MO	MASONRY OPENING
COR	CORNER	NO/#	NUMBER
D	DRAIN	NTS	NOT TO SCALE
DET	DETAIL	OC	ON CENTER
D.I./D.I.P.	DUCTILE IRON/D.I. PIPE	OPNG	OPENING
DIS	DISCHARGE	OVR	OVERFLOW
DIA./Ø	DIAMETER	PL	PLATE/PROPERTY LINE
DWG(S)	DRAWING(S)	PRESS.	PRESSURE
DWLS	DOWELS	PVC	POLYVINYL CHLORIDE PIPE
EXIST.	EXISTING	PVMT	PAVEMENT
EA	EACH	REC	RECIRCULATION
EC	ELECTRICAL CONTRACTOR	REINF	REINFORCE, REINFORCING
EE	EACH END	REQ'D	REQUIRED
EF	EACH FACE	RPZ	REDUCED PRESSURE BACKFLOW PREVENTER
EL,ELEV	ELEVATION	S	SANITARY
EQ	EQUAL	SCH	SCHEDULE
EQUIP	EQUIPMENT	SDR	STANDARD DIMENSION RATIO
ES	EACH SIDE	SP	SUMP PUMP DISCHARGE
ETC	ET CETERA	SPECS	SPECIFICATIONS
EW	EACH WAY	SQ.	SQUARE
EJ	EXPANSION JOINT	SQ. FT.	SQUARE FEET
EXP	EXPANSION	STN. STL./S.S.	STAINLESS STEEL
EXT	EXTERIOR	STD	STANDARD
FBO	FURNISHED BY OTHERS	STRUCT	STRUCTURAL
FDN	FOUNDATION	SW	SIDEWALK
F.F./FIN. FL.	FINISHED FLOOR	T	TOP
FL	FLOOR	T&B	TOP AND BOTTOM
FRP	FIBERGLASS REINFORCED PLASTIC	TOS	TOP OF STEEL
FS	FLOW SWITCH	TOW	TOP OF WALL
FTG	FOOTING	TYP	TYPICAL
GALV	GALVANIZED	V	VENT
		VERT.V	VERTICAL
		W/	WITH
		WS	WATER SERVICE

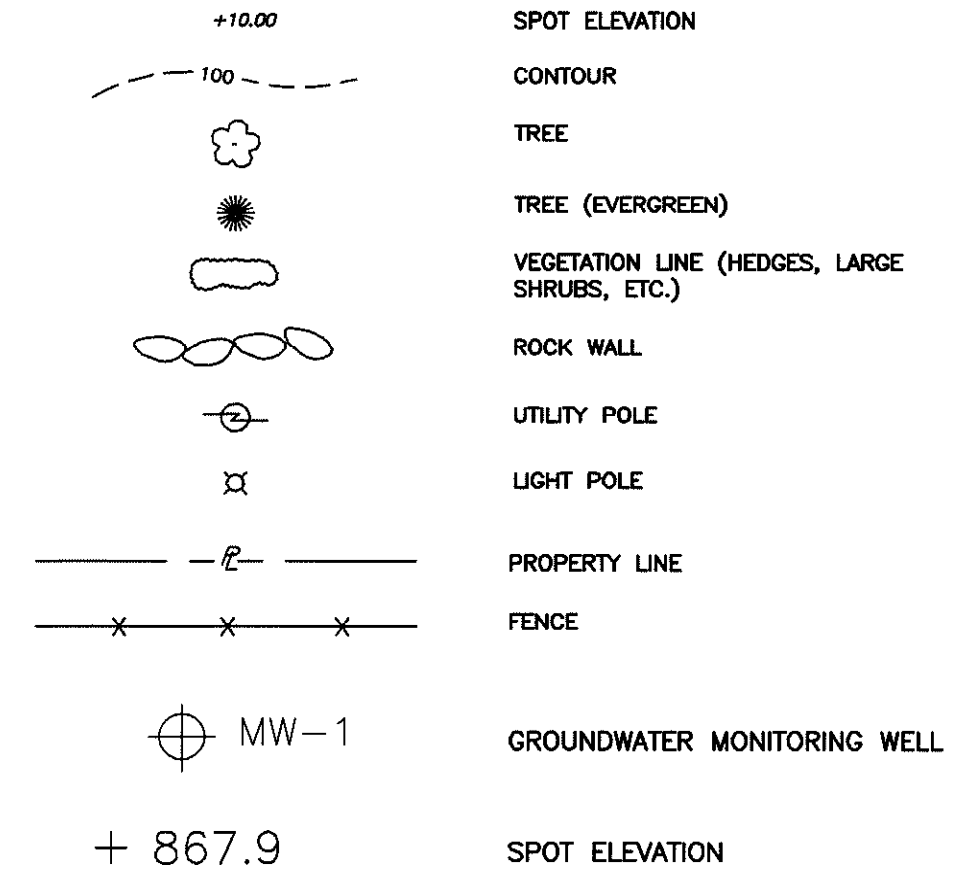
MISC. SYMBOLS



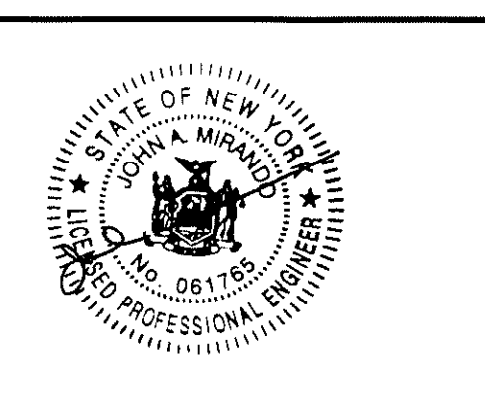
LEGEND-PROPOSED



LEGEND-EXISTING

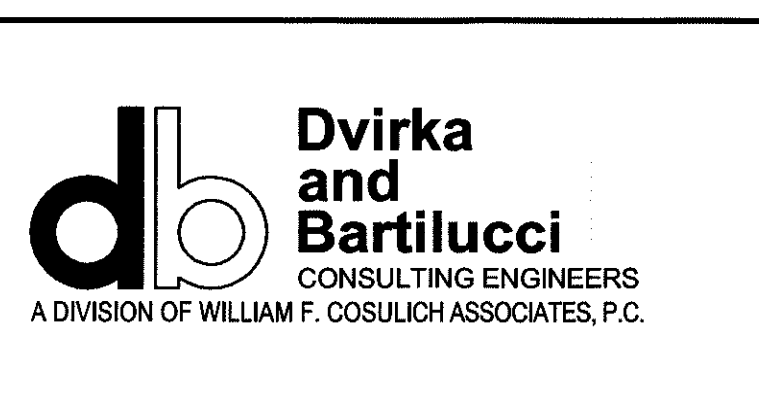


NO.	DATE	REVISION	INT.



UNAUTHORIZED ALTERATION OR ADDITION TO THIS DOCUMENT IS A VIOLATION OF SECTION 7209 OF THE NEW YORK STATE EDUCATION LAW.

PROJECT ENGINEER: MW	DRAWN BY: JEZ
DESIGNED BY: MW	CHECKED BY: RMW

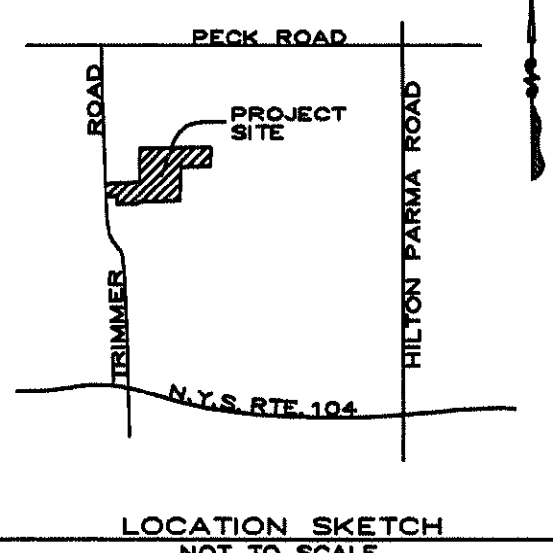


NEW YORK STATE DEPARTMENT OF ENVIRONMENTAL CONSERVATION
TRIMMER ROAD LANDFILL SITE

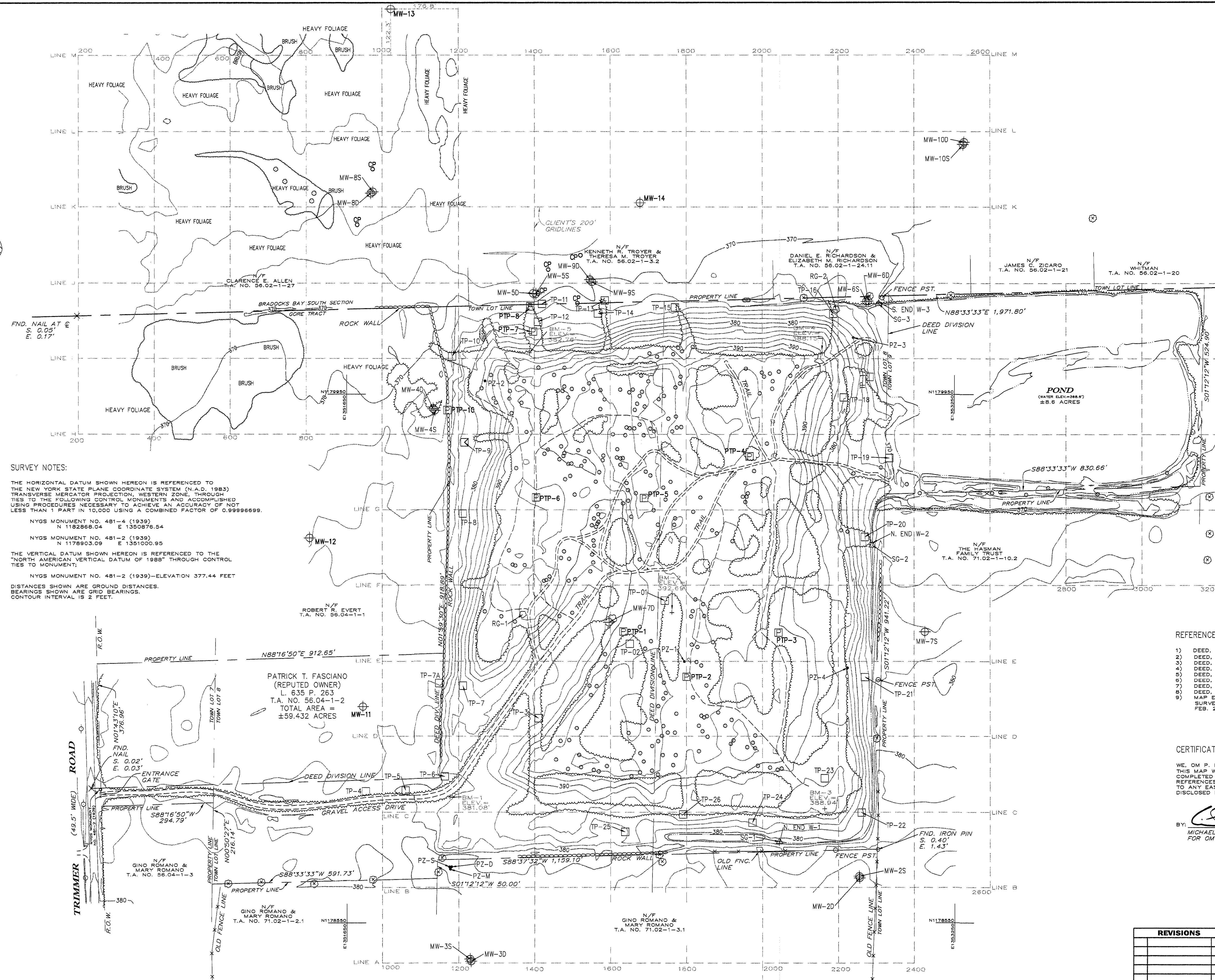
REMEDIAL CONSTRUCTION
CONTRACT NO. D006373

SYMBOLS AND ABBREVIATIONS

PROJECT NO. 2273	1
DATE: OCTOBER 2006	
SCALE: N.T.S.	



- LEGEND**
- ⊕ MW- MONITORING WELL
 - CP- CORNER OF TEST PLOT
 - PTP- PHYTOR TEST PIT
 - PZ- PIEZOMETER
 - TP- TEST PIT
 - RG- RAIN GAUGE
 - △ SG- STAFF GAUGE
 - ⊗ TREE WITH WIRE
 - ⊖ ROCK WALL
 - OLD WIRE FENCE LINE
 - ⊕ UTILITY POLE
 - ⊕ T.A. TAX ACCOUNT
 - EDGE OF WATER



SURVEY NOTES:

THE HORIZONTAL DATUM SHOWN HEREON IS REFERENCED TO THE NEW YORK STATE PLANE COORDINATE SYSTEM (N.A.D. 1983) TRANSVERSE MERCATOR PROJECTION, WESTERN ZONE, THROUGH TIES TO THE FOLLOWING CONTROL MONUMENTS AND ACCOMPLISHED USING PROCEDURES NECESSARY TO ACHIEVE AN ACCURACY OF NOT LESS THAN 1 PART IN 10,000 USING A COMBINED FACTOR OF 0.99996699.

NYGS MONUMENT NO. 481-4 (1939)
N 1182868.04 E 1350876.54

NYGS MONUMENT NO. 481-2 (1939)
N 1178903.09 E 1351000.95

THE VERTICAL DATUM SHOWN HEREON IS REFERENCED TO THE "NORTH AMERICAN VERTICAL DATUM OF 1988" THROUGH CONTROL TIES TO MONUMENT:


NYGS MONUMENT NO. 481-2 (1939)-ELEVATION 377.44 FEET

DISTANCES SHOWN ARE GROUND DISTANCES.
BEARINGS SHOWN ARE GRID BEARINGS.
CONTOUR INTERVAL IS 2 FEET.

- REFERENCES:**
- 1) DEED, FILED IN LIBER 6035 AT PAGE 263.
 - 2) DEED, FILED IN LIBER 7594 AT PAGE 296.
 - 3) DEED, FILED IN LIBER 6922 AT PAGE 98.
 - 4) DEED, FILED IN LIBER 8898 AT PAGE 499.
 - 5) DEED, FILED IN LIBER 7282 AT PAGE 58.
 - 6) DEED, FILED IN LIBER 9112 AT PAGE 379.
 - 7) DEED, FILED IN LIBER 8971 AT PAGE 270.
 - 8) DEED, FILED IN LIBER 8860, AT PAGE 544.
 - 9) MAP ENTITLED "MAP SHOWING BOUNDARY SURVEY OF LANDS OF FISHER BROS." DATED FEB. 21, 1989, PREPARED BY GREGORY D. BLY L.S.

CERTIFICATION:

WE, OM P. POPLI, P.E., L.S., P.C., HEREBY CERTIFY THAT THIS MAP WAS PREPARED FROM THE NOTES OF A SURVEY COMPLETED ON FEBRUARY 4, 2000 AND FROM THE REFERENCES LISTED HEREON. THIS SURVEY IS SUBJECT TO ANY EASEMENTS AND OR ENCUMBRANCES NOT SHOWN OR DISCLOSED IN THE REFERENCES LISTED ABOVE.

BY:  DATE: 2-24-05
MICHAEL A. VENTURO, NYS, P.L.S. NO. 50079
FOR OM P. POPLI, P.E., L.S., P.C.

BOUNDARY & TOPOGRAPHIC MAP

TRIMMER ROAD - LANDFILL

NO.	DATE	REVISIONS
1-00	MARCH 2000	AS SHOWN
1-00		REVISED MAP SCALE

DIVIRKA AND BARTILUCCI

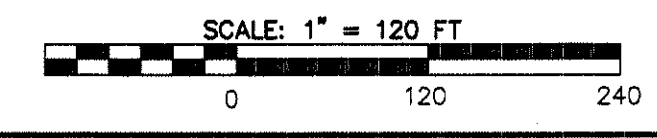
POPLI
CONSULTING ENGINEERS & SURVEYORS

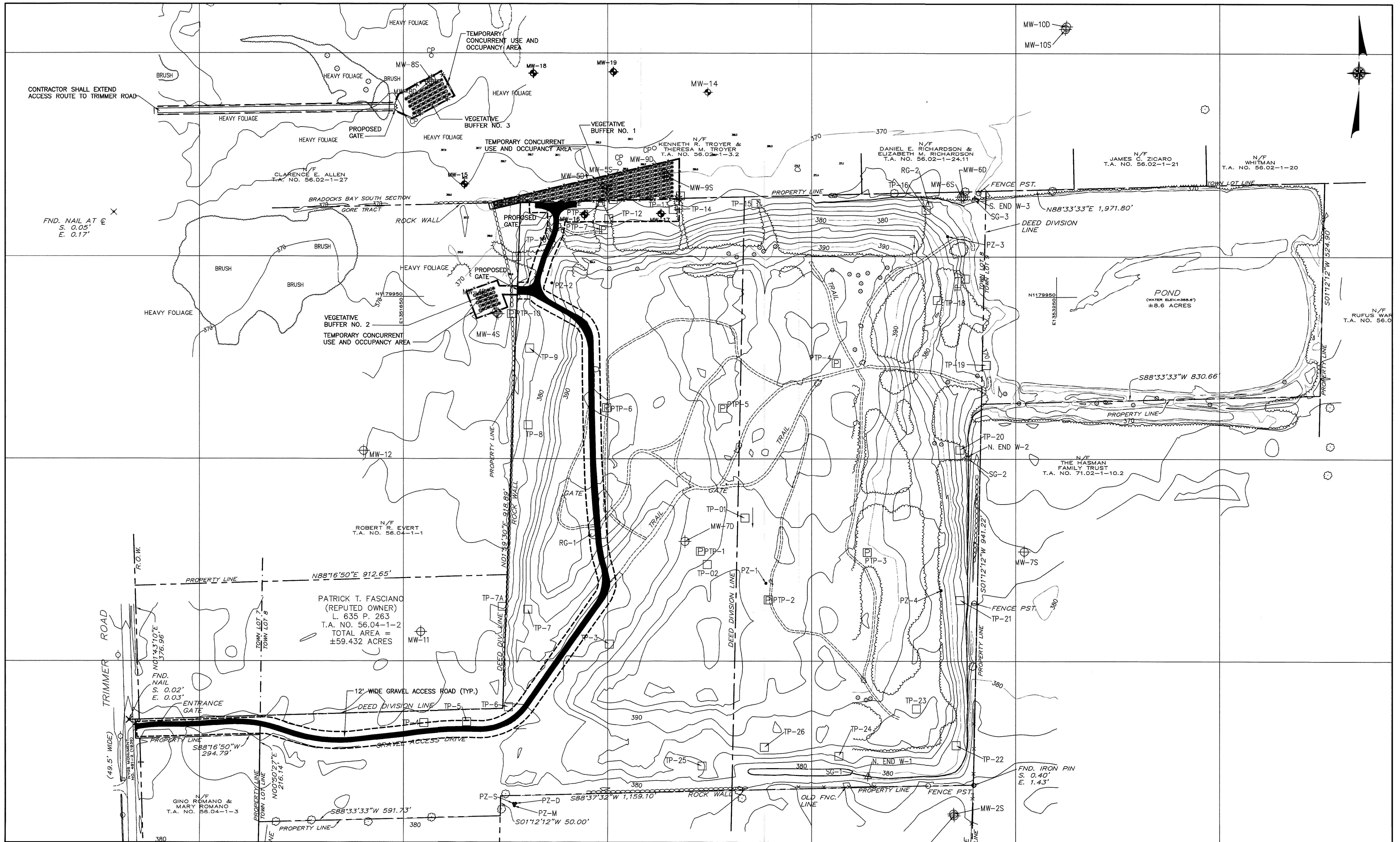
555 PENBROOKE DRIVE
PENFIELD, NEW YORK 14528
(585) 388-2080

DATE: MARCH 2000
SCALE: 1" = 120'
BY: KEV
CHECKED BY: TRTOPO

BEING A PORTION OF LOTS 7, 8, & 9 ON THE GORE (TRACT), TOWN OF PARMA, MONROE COUNTY, STATE OF NEW YORK

STATE OF NEW YORK
MICHAEL A. VENTURO
LICENSED LAND SURVEYOR
50079





NO.	DATE	REVISION	INT.



UNAUTHORIZED ALTERATION OR ADDITION TO THIS DOCUMENT IS A VIOLATION OF SECTION 7209 OF THE NEW YORK STATE EDUCATION LAW.

PROJECT ENGINEER: MW
 DRAWN BY: JEZ
 DESIGNED BY: MW
 CHECKED BY: RMW

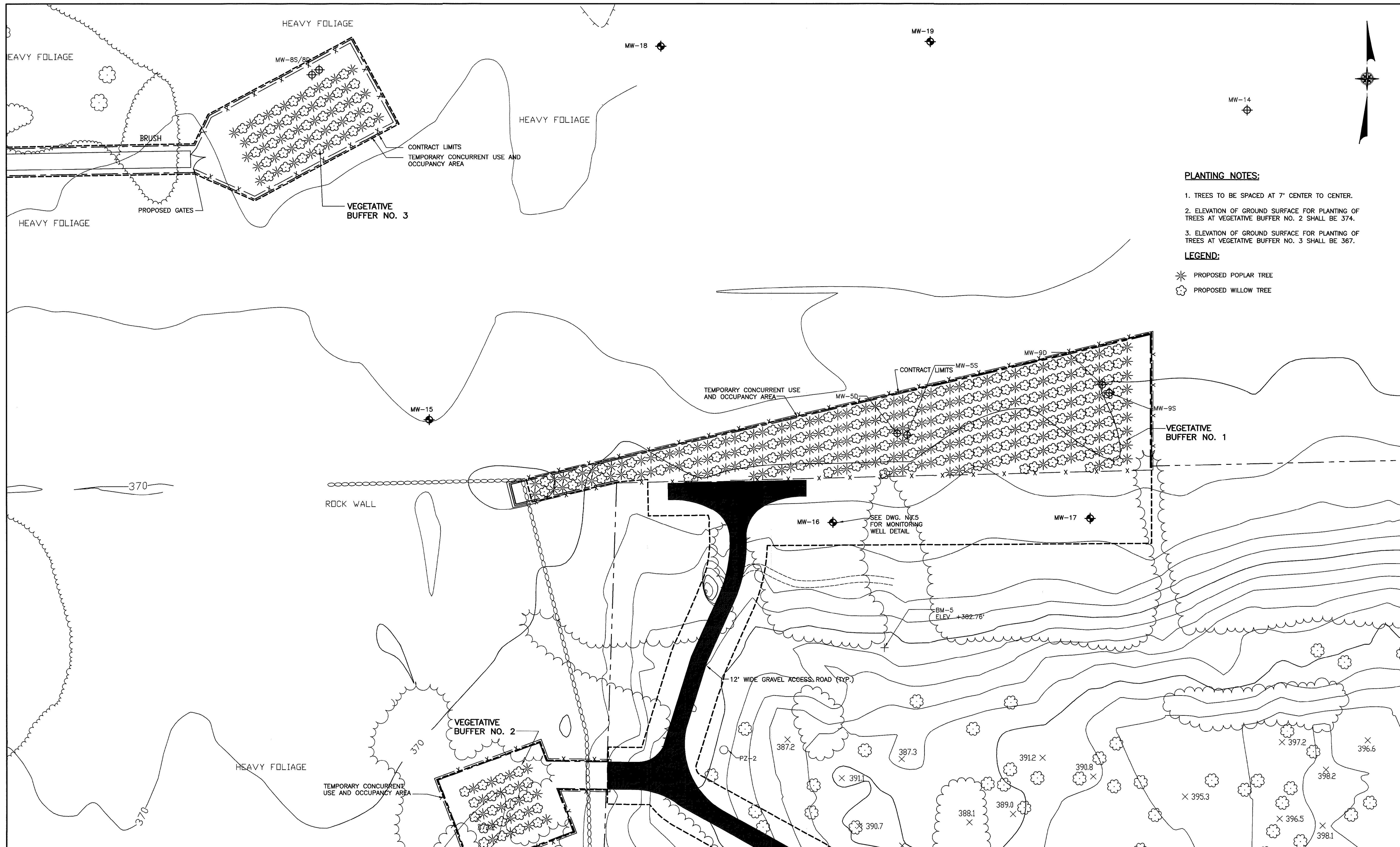
db Dvirka and Bartilucci
 CONSULTING ENGINEERS
 A DIVISION OF WILLIAM F. COSULICH ASSOCIATES, P.C.

NEW YORK STATE DEPARTMENT OF ENVIRONMENTAL CONSERVATION
TRIMMER ROAD LANDFILL SITE
REMEDIAL CONSTRUCTION
CONTRACT NO. D006373

OVERALL SITE PLAN

PROJECT NO. 2273
 DATE: OCTOBER 2006
 SCALE: 1"=100'

F:\2273\dwg\2273-SP-01.dwg, DWG 3, 10/03/06 02:58:48 PM, L04.rvt



- PLANTING NOTES:**
- TREES TO BE SPACED AT 7' CENTER TO CENTER.
 - ELEVATION OF GROUND SURFACE FOR PLANTING OF TREES AT VEGETATIVE BUFFER NO. 2 SHALL BE 374.
 - ELEVATION OF GROUND SURFACE FOR PLANTING OF TREES AT VEGETATIVE BUFFER NO. 3 SHALL BE 367.

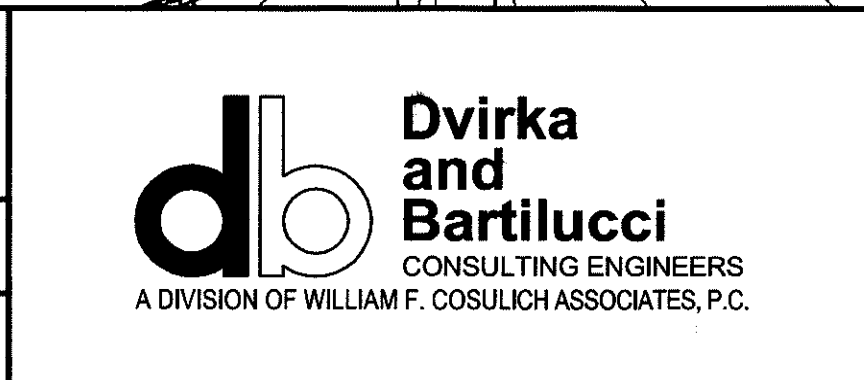
- LEGEND:**
- * PROPOSED POPLAR TREE
 - PROPOSED WILLOW TREE

NO.	DATE	REVISION	INT.



UNAUTHORIZED ALTERATION OR ADDITION TO THIS DOCUMENT IS A VIOLATION OF SECTION 7209 OF THE NEW YORK STATE EDUCATION LAW.

PROJECT ENGINEER: MW	DRAWN BY: JEZ
DESIGNED BY: MW	CHECKED BY: RMW

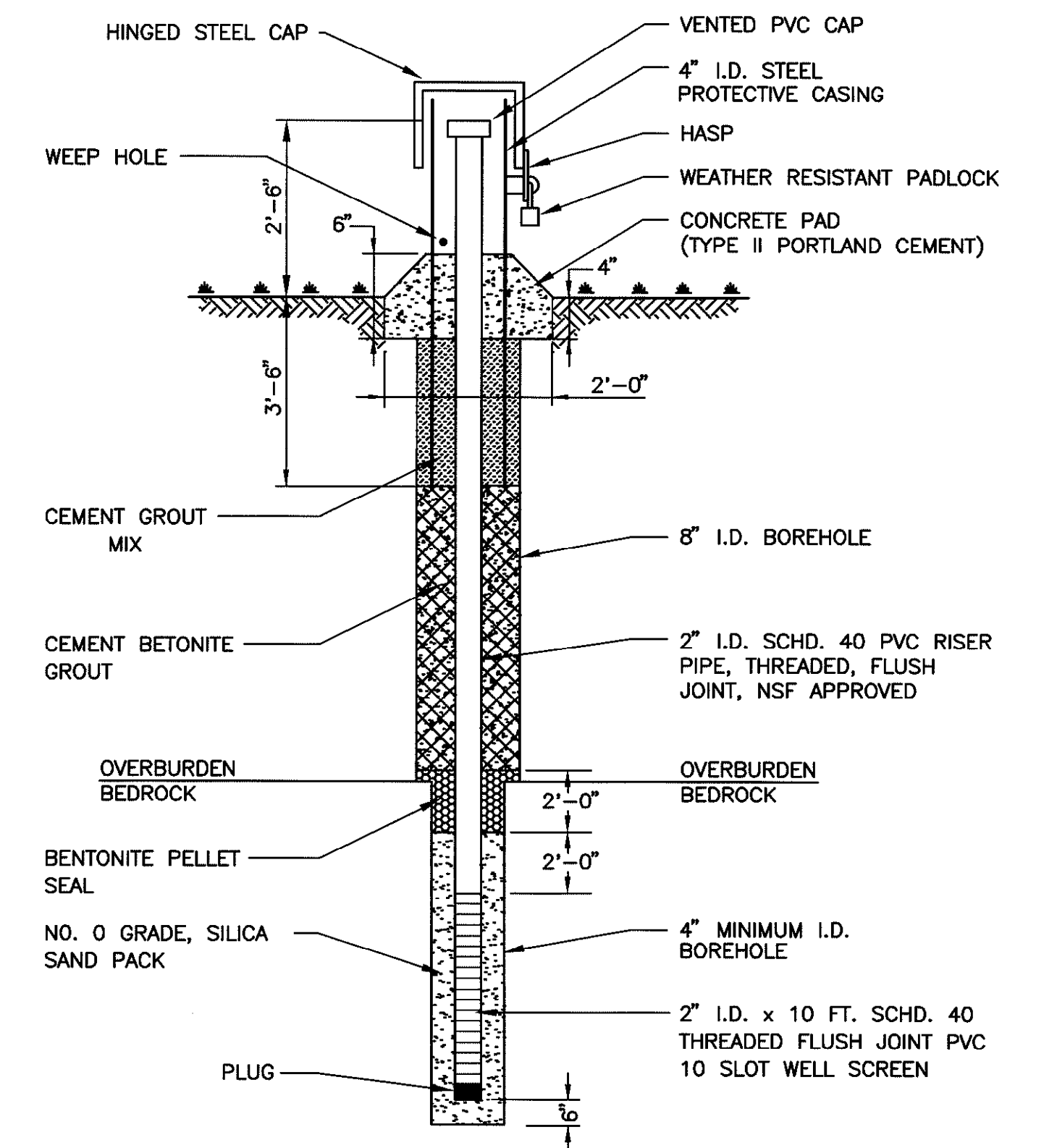
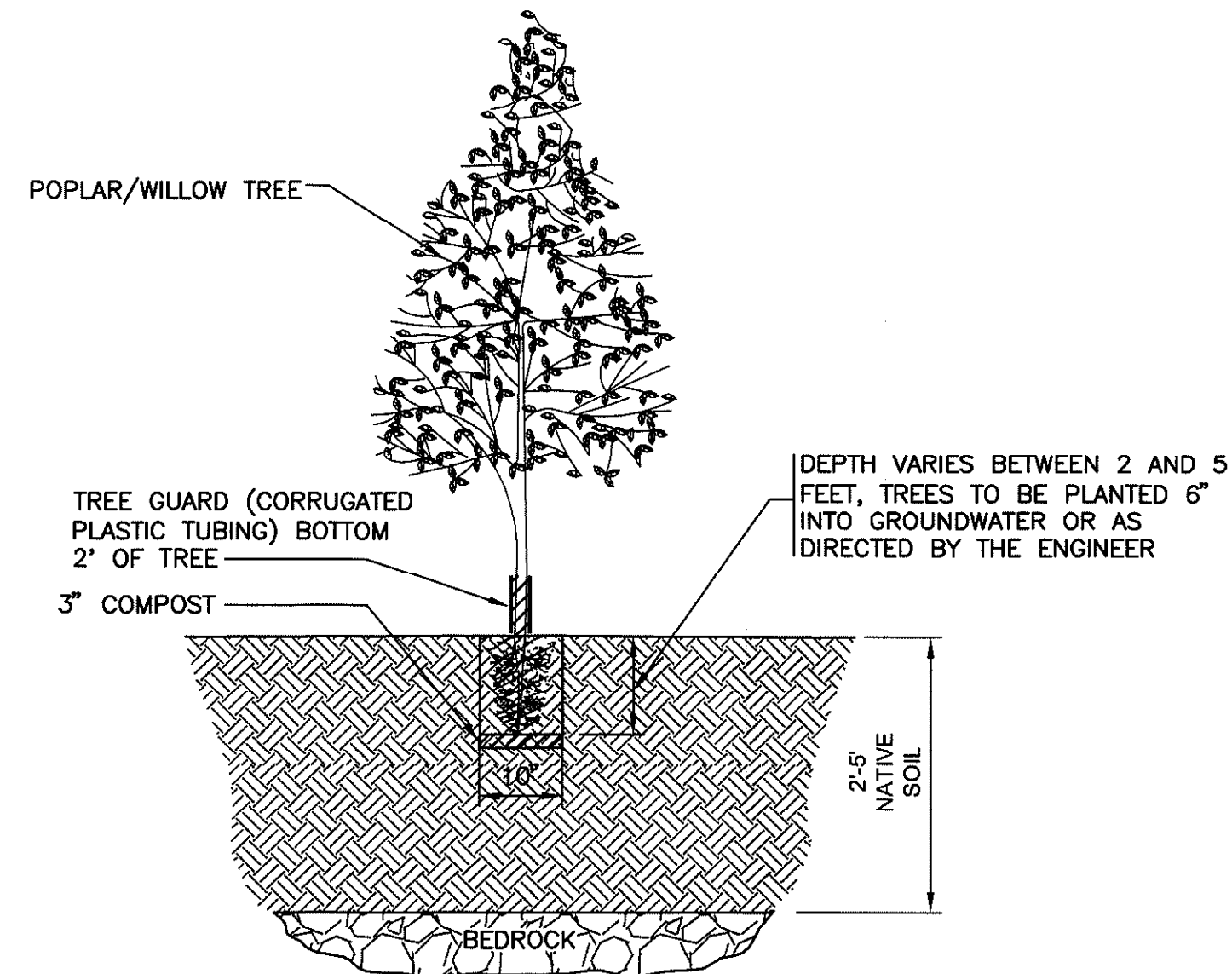
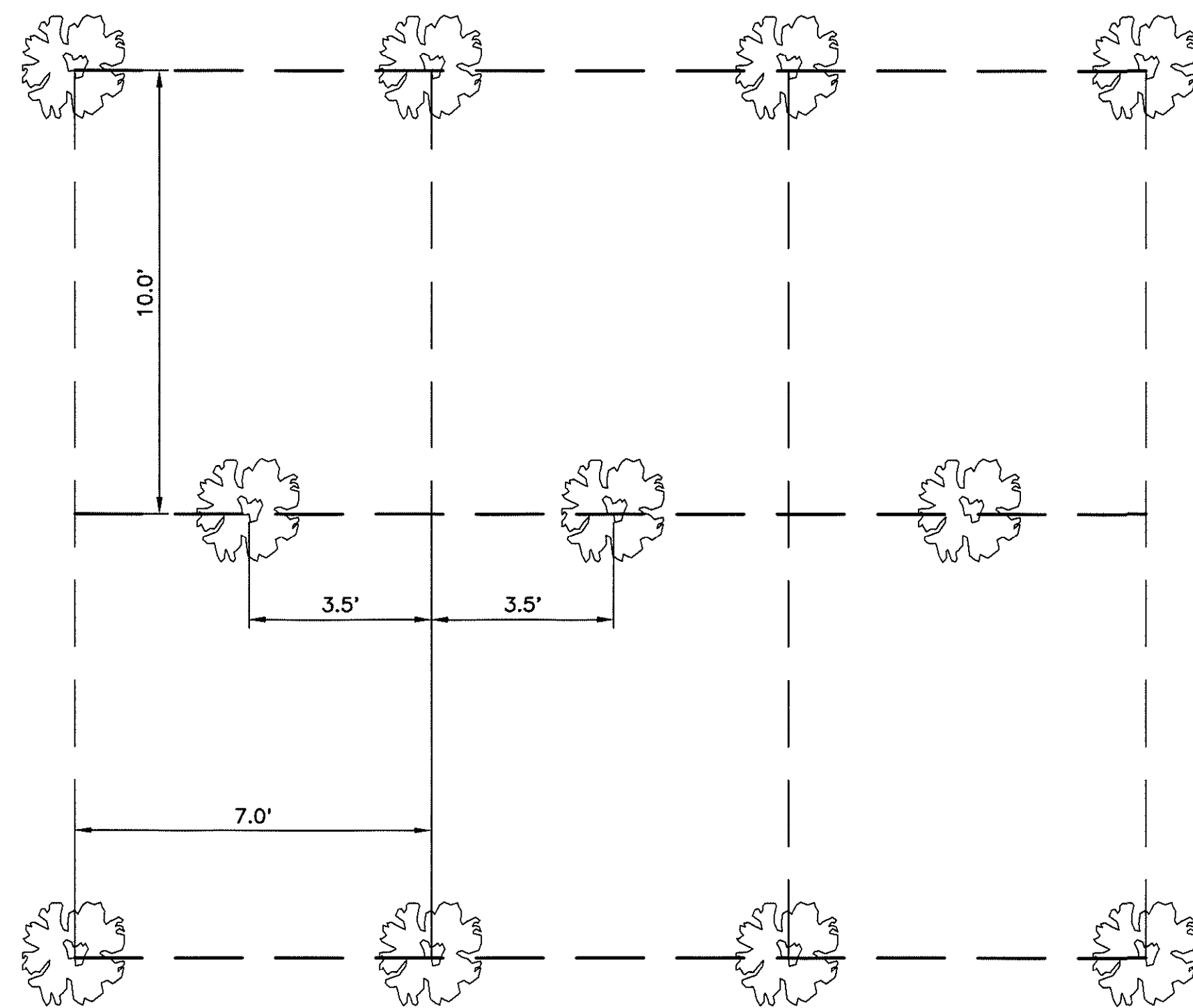
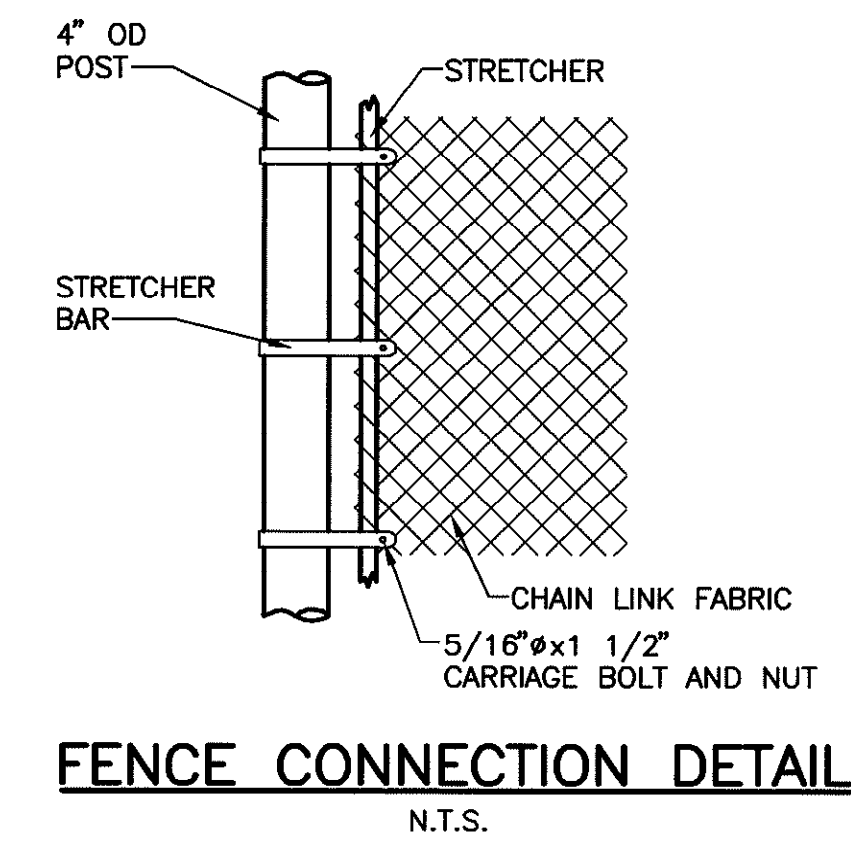
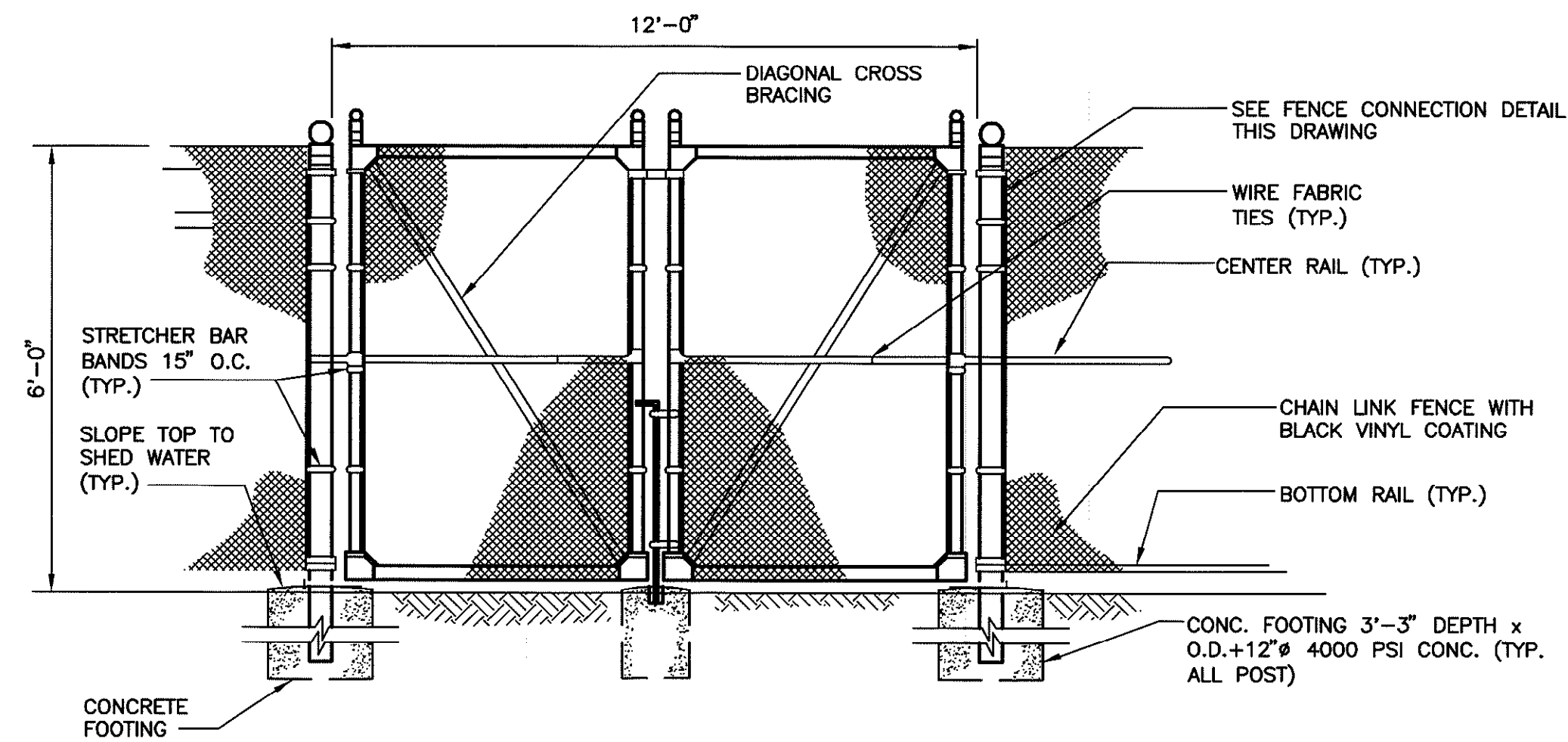
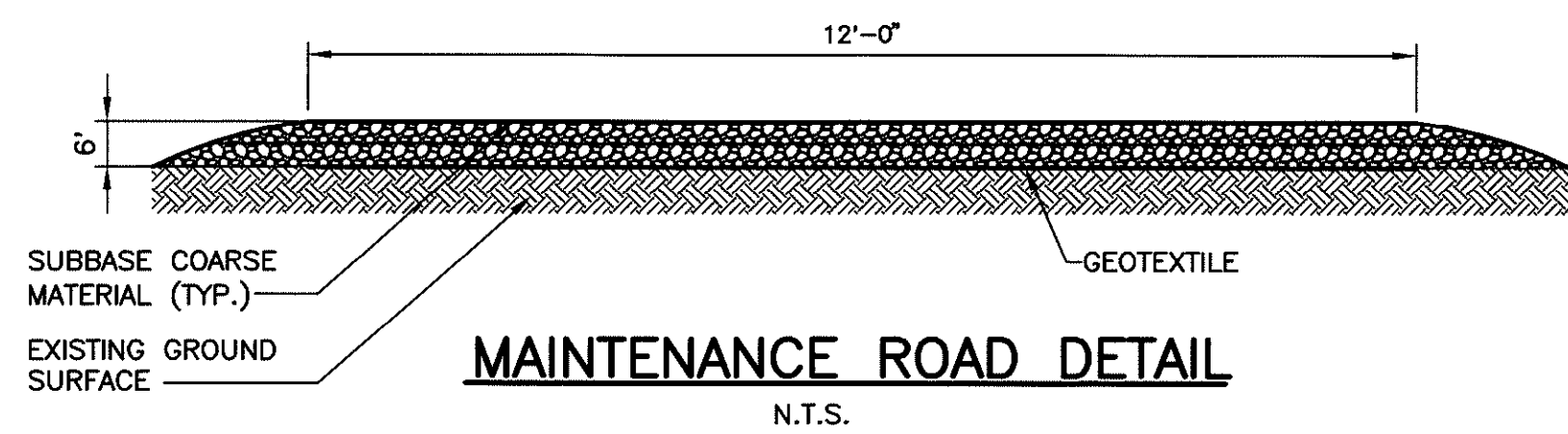


NEW YORK STATE DEPARTMENT OF ENVIRONMENTAL CONSERVATION
TRIMMER ROAD LANDFILL SITE
REMEDIAL CONSTRUCTION
CONTRACT NO. D006373

VEGETATION PLAN
VEGETATIVE BUFFERS NO. 1, 2 AND 3

PROJECT NO. 2273	4
DATE: OCTOBER 2006	
SCALE: 1" = 30'	

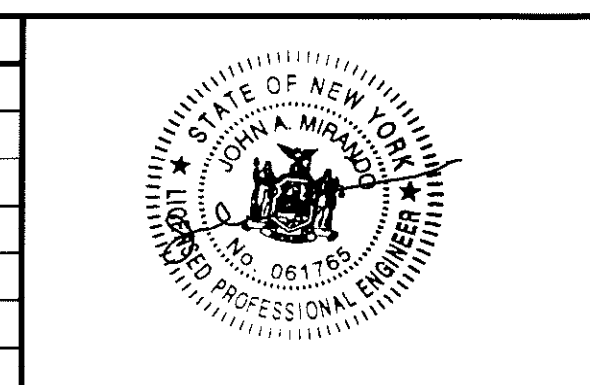
P:\2007\10\22\273-SP-30.dwg, DWG 4, 10/20/06 02:34:54 PM, L.Gabrek



WELL No.	EXISTING GROUND SURFACE EL.	EL. OF TOP OF SCREEN
MW-15	367	365
MW-16	373	368
MW-17	373	368
MW-18	365	363
MW-19	365	363

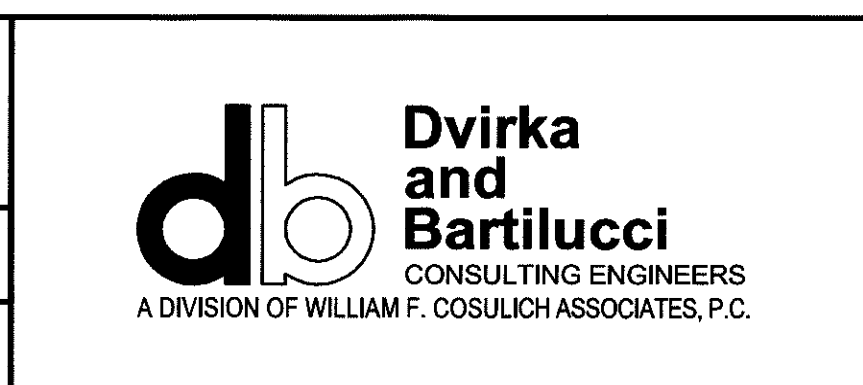
NOTE: SEE DWG. 4 FOR GROUNDWATER MONITORING WELL LOCATIONS

NO.	DATE	REVISION	INT.



UNAUTHORIZED ALTERATION OR ADDITION TO THIS DOCUMENT IS A VIOLATION OF SECTION 7209 OF THE NEW YORK STATE EDUCATION LAW.

PROJECT ENGINEER: MW
 DRAWN BY: JEZ
 DESIGNED BY: MW
 CHECKED BY: RMW



NEW YORK STATE DEPARTMENT OF ENVIRONMENTAL CONSERVATION
 TRIMMER ROAD LANDFILL SITE

REMEDIAL CONSTRUCTION
 CONTRACT NO. D006373

PROJECT NO. 2273
 DATE: OCTOBER 2006
 SCALE: AS NOTED

DRAWING NO. 5

DETAILS I