



FACT SHEET

State Superfund Program

Sweden-3 Chapman Site
8-28-040A, Town of Sweden, Monroe County, NY

May 2010

Cleanup Action Completed at State Superfund Site; Final Engineering Report Being Developed

INTRODUCTION: Action has been completed in May 2010 to address contamination related to the Sweden-3 Chapman site ("site") located off of Beadle Road in the Town of Sweden, Monroe County, under New York's State Superfund Program. See map on Page 5 for site location. The cleanup activities were performed by the Environmental Services Group, Inc., from Tonawanda, New York, under contract with and oversight by the New York State Department of Environmental Conservation (NYSDEC).

NYSDEC is in the process of preparing a Final Engineering Report. Once approved, the Final Engineering Report will state that cleanup requirements have been achieved to fully protect public health and the environment. The Final Engineering Report will be made available at the locations identified below under "Where to Find Information" and also made available on the NYSDEC web site at <http://www.dec.ny.gov/chemical/62552.html>.

SITE BACKGROUND: The approximately two-acre site was used during the late 1960s and early 1970s for construction and demolition debris disposal. Large amounts of drummed hazardous and industrial wastes were also disposed of there. In 1990, over 2,300 drums of hazardous and industrial waste were removed by the NYSDEC, while 2,075 tons of impacted soil and debris were stockpiled on site. In 1992, the NYSDEC conducted a remedial investigation/feasibility study at the site that indicated that the drum disposal at the Sweden-3 Chapman site caused subsurface soil and groundwater contamination. In 1999, the NYSDEC excavated and treated of contaminated soils on site, collected groundwater encountered during excavation for on-site treatment and disposal, and constructed a landfill cap. Long-term maintenance of the landfill cap and groundwater monitoring followed and is still in progress.

Additional state-funded investigations were conducted in October 2003 and December 2007 thru July 2008 to determine why the 1999 remedy did not result in the achievement of groundwater cleanup standards in the areas to the northeast of the landfill. Based on the results of those investigations, it was discovered that high concentrations of volatile organic compound (VOC) contamination remained in soils below the northeastern edge of the landfill cap. As such, an Explanation of Significant Differences (ESD) was issued by the NYSDEC in February of 2006 and again in January 2009 that outlined a modified remedial action plan which would obtain the remedial goals originally outlined in the Record of Decision.

DETAILS OF THE SITE CLEANUP: The cleanup design for the Sweden-3 Landfill site was completed by the NYSDEC in August 2009 and the contract for cleanup activities was awarded at the end of January 2010 to the Environmental Services Group, Inc. Environmental cleanup work at the site began in February 2010 and was completed on schedule in May 2010. All construction work was performed under full-time oversight by EA Engineering, Science, and Technology (EA), the engineering consultant hired by NYSDEC. In addition, the contractor's Health and Safety plan for the work was followed to ensure that on-site workers and the nearby community were protected during site cleanup activities. As part of the Community Air Monitoring Plan, dust levels were continuously monitored at various locations surrounding the site to ensure that dust was not a problem during cleanup activities.

During cleanup activities, all truck traffic to and from the site associated with excavation and off-site disposal activities was limited to non-residential areas as much as practical. During that time the contractor was responsible for keeping the transportation route clean of all site-related soils and fill material. The following major cleanup activities were completed at the site:

- ☐ Approximately 3,000 tons of non-hazardous, solid waste consisting primarily of VOC contaminated soils were removed from the site and disposed of at an off-site, state permitted facility;
- ☐ Contaminated groundwater generated during excavation activities was collected, treated on site or disposed of off-site at a state permitted facility. Prior to on-site discharge samples of the treated water were regularly collected and analyzed for site-specific contaminants of concern to ensure compliance with NYSDEC discharge standards and requirements;
- ☐ The chemical potassium permanganate was injected into the bottom of the excavated area to treat the contaminated groundwater in place;
- ☐ Excavated areas were backfilled, re-graded with off-site, clean soil to promote proper site drainage, and re-seeded; and
- ☐ Installation of two (2) additional groundwater monitoring wells to be sampled as part of long-term monitoring of groundwater quality between the site and the surrounding residential areas.

During cleanup Giant Hogweed was identified at the site and was eradicated by the contractor. Giant Hogweed is an invasive plant species which is a federally listed noxious weed (see picture on Page 4 below), and can grow up to 20 feet in height. It has stout, dark-reddish-purple stems, compound leaves up to five feet in width, and white flowers on an umbrella-shaped head up to 2½ feet in diameter. The plants sap, in combination with moisture and sunlight, can cause severe skin and eye irritation, painful blistering, permanent scarring and blindness. Contact between the skin and the sap of this plant occurs either through brushing against the bristles on the stem or breaking the stem or leaves.

WHAT HAPPENS NEXT: The NYSDEC will prepare the Final Engineering Report in preparation for a proposed reclassification of the site on the NYS Registry of Inactive Hazardous Waste Disposal Sites. The Final Engineering Report has several goals: 1) to describe the cleanup

activities completed; 2) to certify that cleanup requirements have been achieved or will be achieved for the site; 3) to describe any institutional/engineering controls to be used. *An institutional control is a non-physical restriction on use of the site, such as a deed restriction, when the cleanup action leaves residual contamination that makes the site suitable for some, but not all uses. An engineering control is a physical barrier or method to manage contamination such as a cap or vapor barrier;* and 4) to certify that a site management plan for any engineering controls used at the site has been approved by the NYSDEC.

Since the remedy results in contamination above unrestricted use levels remaining at the site, a Site Management Plan (SMP) will be developed and implemented. The SMP will include the following institutional and engineering controls: (a) a plan for long-term groundwater monitoring; (b) maintenance of the existing cover; (c) a plan to manage any development of the landfill that would result in excavation into the existing cover and/or waste; (d) an exclusion against future residential use; and (e) a prohibition against the use of groundwater at the site as a source of potable or process water without necessary water quality treatment; and an annual submission by the site owner of an Institutional Controls/Engineering Controls (IC/EC) certification for a period to be approved by the NYSDEC, which would certify that the institutional and engineering controls are unchanged and nothing has occurred that would impair the ability of the controls to protect public health or the environment or constitute a violation or failure to comply with any operation and maintenance or the SMP.

LOCATIONS TO VIEW PROJECT DOCUMENTS: To keep you informed, NYSDEC has set up locations at which you may view project documents. They include:

NYS DEC Region 8 Office

6274 East Avon-Lima Road
Avon, NY 14414
Contact: Lisa Silvestri
(585) 226-5326 By Appointment Only

Seymour Public Library

116 East Avenue
Brockport, NY 14420
(585) 637-1050
<http://www.seymourlibraryweb.org/>

Once finalized, a copy of the final engineering report will also be placed at these locations. The final engineering report is currently expected to be available during this summer.

FOR MORE INFORMATION: Your comments and questions regarding this project are welcome. Your patience and understanding during this site's investigation and cleanup processes have been appreciated. Should you have any questions or concerns you may contact the following representatives:

Technical Information:

David Chiusano, Project Manager
NYSDEC Albany Office
625 Broadway, 12th Floor
Albany, NY 12233-7017
(518) 402-9814
djchiusa@gw.dec.state.ny.us

Local Project Contact:

Lisa Silvestri
NYSDEC Region 8 Office
6274 East Avon-Lima Road
Avon, NY 14414
(585) 226-5326
lasilves@gw.dec.state.ny.us

Health-Related Concerns:

Julia Kenney
NYSDOH
547 River Street, Room 300
Troy, New York 12180-2216
(800) 458-1158, ext. 27860

➤ **Additional Information:** For additional information on the soil and groundwater cleanup technologies that were used at this site, please visit the United States Environmental Protection Agency's website at: "A Citizen's Guide to Soil Excavation": <http://www.epa.gov/tio/download/citizens/excavation.pdf> and "A Citizen's Guide to Chemical Oxidation": <http://clu-in.org/download/citizens/oxidation.pdf> . For additional information on Giant Hogweed and New York State's Identification and Eradication Program, please visit the NYSDEC's website at <http://www.dec.ny.gov/animals/39809.html> or the United States Department of Agriculture website at http://www.invasive.org/eastern/other/poster_phhogweed.pdf.

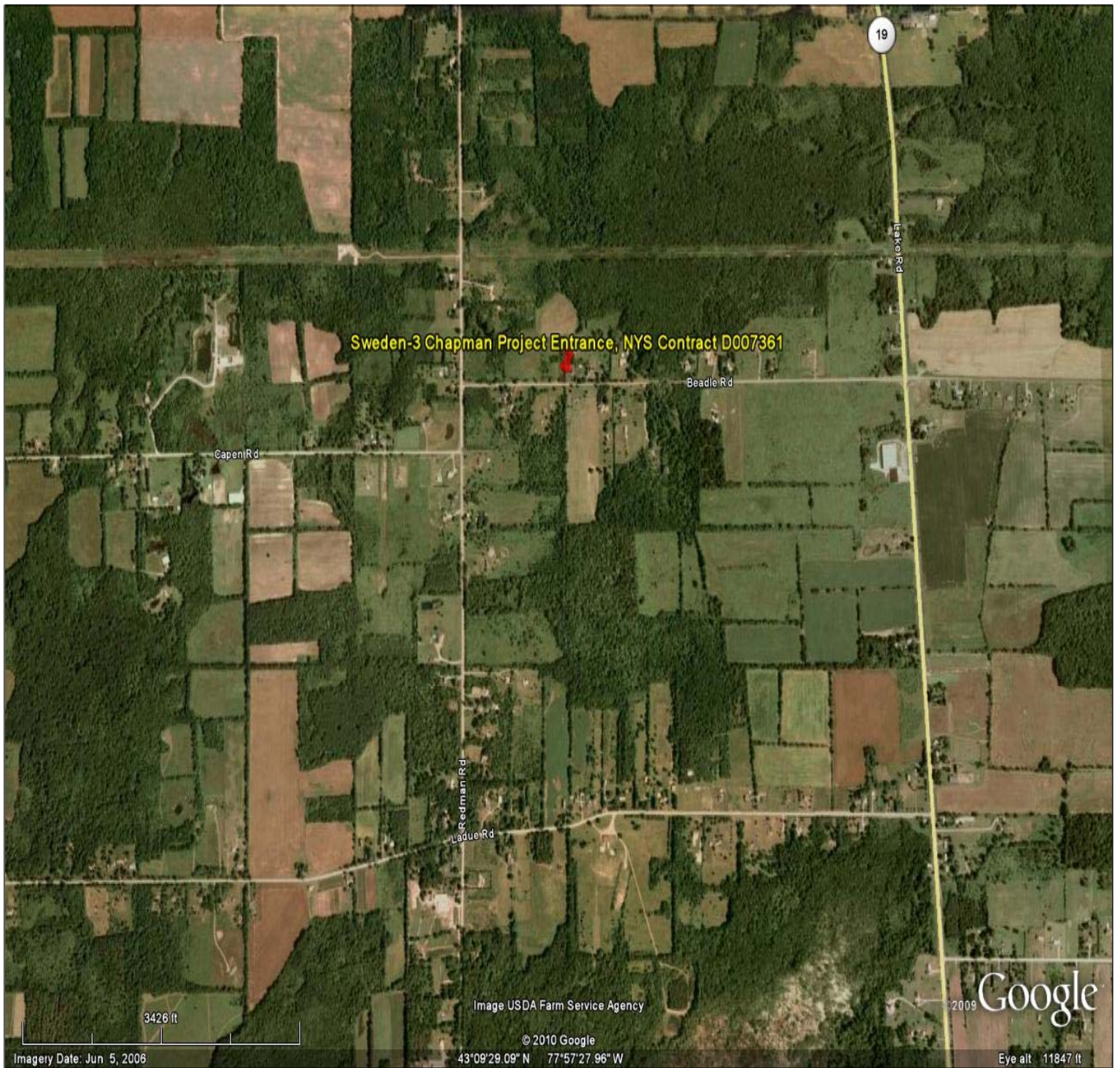
Giant Hogweed Eradication Program Contact:

Naja Kraus
NYSDEC Region 3
Division of Lands and Forests
21 South Putt Corners Road
New Paltz, NY 12561
(845) 256-3111 and/or nekraus@gw.dec.state.ny.us



Giant Hogweed

➤ **Electronic Distribution of Information:** Information about this site and other sites in the State's remedial programs will now be distributed electronically by email. To continue to receive site information, you must sign up at the appropriate NYSDEC county email listserv at: www.dec.ny.gov/chemical/61092.html. The NYSDEC cannot register your email address, only the email address owner can do so. If you have already signed up for the same county identified on this fact sheet (Monroe County), you do not need to do anything else. If "paperless" is not an option for you, or if you have questions, write to the Project Manager at the email address or mailing address above.



SITE LOCATION MAP