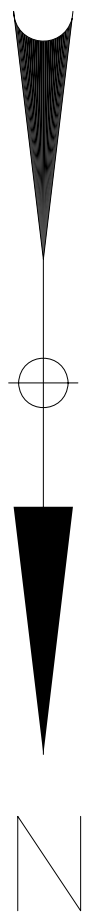


Name: ROCHESTER EAST  
 Date: 12/26/2006  
 Scale: 1 inch equals 1000 feet

Location: 043° 10' 07.79" N 077° 37' 16.01" W  
 Caption: Figure 1-1 Site Location Map  
 Former Raeco Products Site  
 Rochester, New York

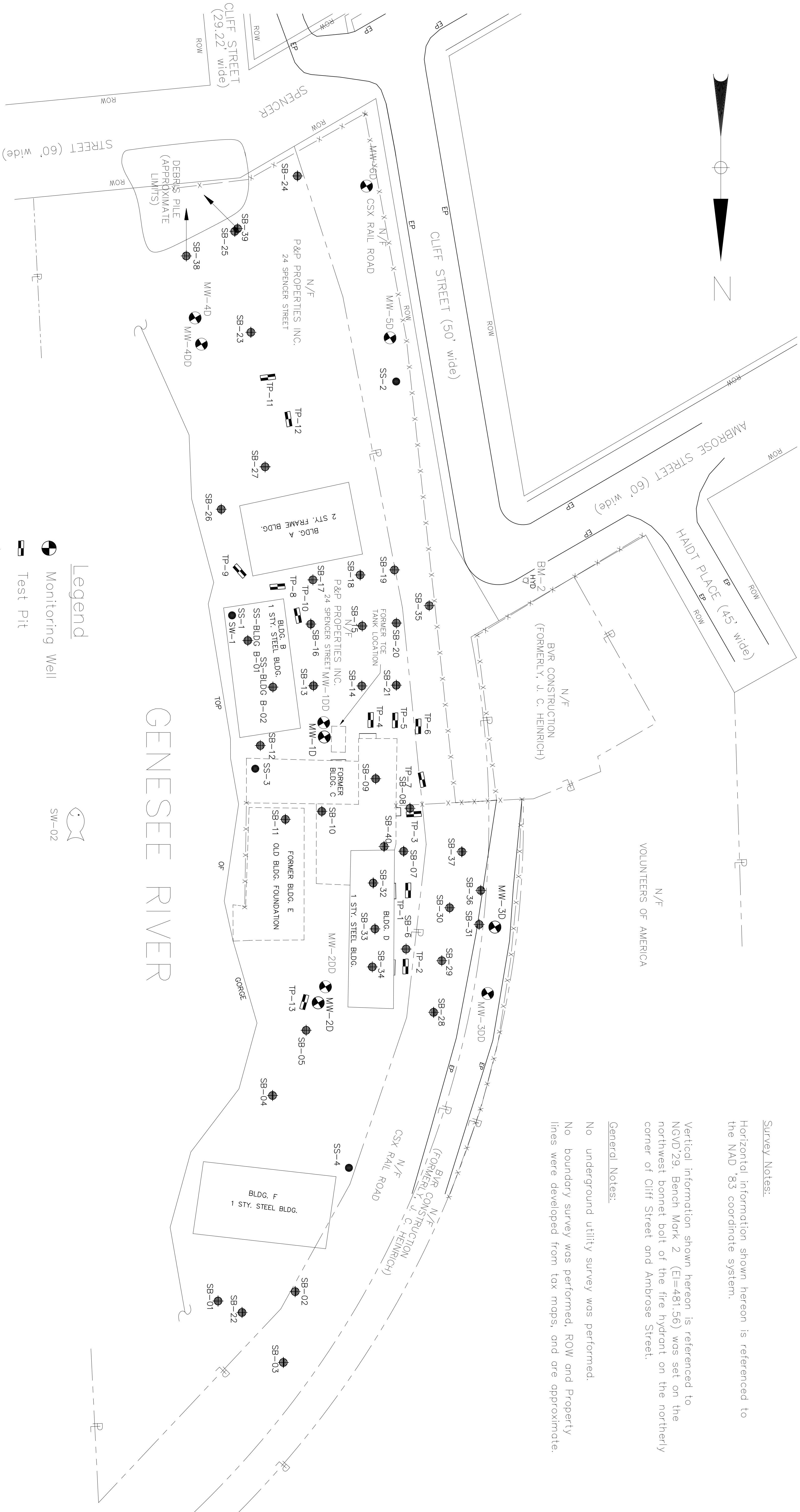




Survey Notes:  
Horizontal information shown hereon is referenced to the NAD '83 coordinate system.

Vertical information shown hereon is referenced to NGVD 29. Bench Mark 2 (E=481.56) was set on the northwest bonnet bolt of the fire hydrant on the northerly corner of Cliff Street and Ambrose Street.

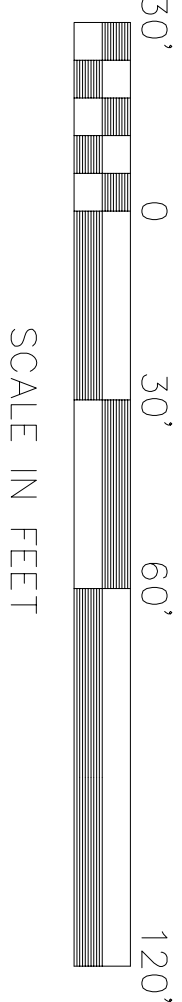
General Notes:  
No underground utility survey was performed.  
No boundary survey was performed, ROW and Property lines were developed from tax maps, and are approximate.



### Legend

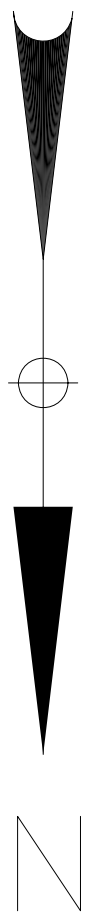
- Monitoring Well
- Test Pit
- Soil Boring
- N/F Now or Formerly
- Surface Water Sample Location

Note: Arrows at SB-38 & SB-39 Indicate Approximate Direction of Bore.



SOURCE: LARSEN ENGINEERS  
2000 LARSEN ENGINEERS  
7010 22ND STREET, NEW YORK 14623-2678  
(716) 272-7310 FAX (716) 272-0159  
SAMPLE POINT LOCATION MAP, FILE: 5388-1.DWG, PROJECT #29-4-5388  
PROJECT #29-4-5388, DATED 12/29/99

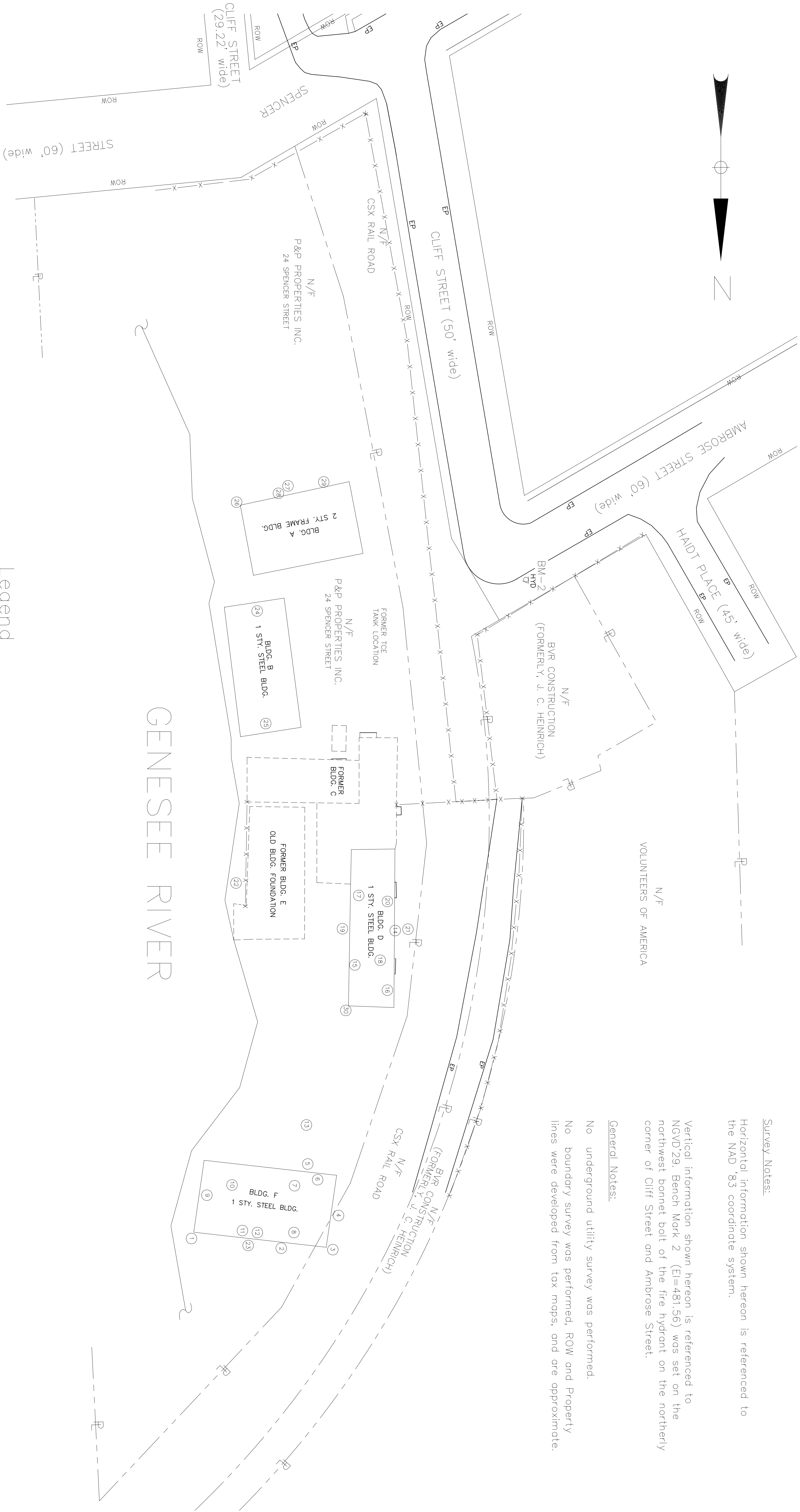
NO.		DATE	APPR.	REVISION		NO.	DATE	APPR.	REVISION	



Survey Notes:  
Horizontal information shown hereon is referenced to the NAD '83 coordinate system.

Vertical information shown hereon is referenced to NGVD 29. Bench Mark 2 (El=481.56) was set on the northwest bonnet bolt of the fire hydrant on the northerly corner of Cliff Street and Ambrose Street.

General Notes:  
No underground utility survey was performed.  
No boundary survey was performed. ROW and Property lines were developed from tax maps, and are approximate.

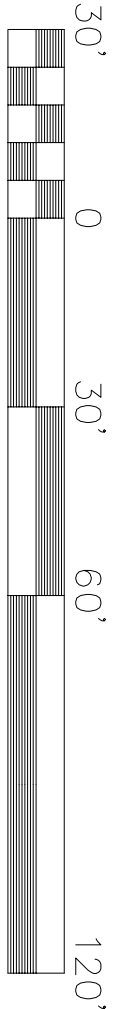


# GENESEE RIVER

## Legend


- N/F Now or Formerly
- Site Feature

Note:  
Refer to Table 2-3 for description of each site feature.



SCALE IN FEET

SOURCE: LARSEN ENGINEERS  
7010 JEFFERSON AVENUE, ROCHESTER, NEW YORK 14623-2678  
(716) 272-7310 FAX (716) 272-0159  
SAMPLE POINT LOCATION MAP, FILE 5388-1.DWG, PROJECT #29-4-5388  
PROJECT #29-4-5388, DATED 12/29/99

NO.		DATE	APPR.	REVISION		NO.	DATE	APPR.	REVISION		<div><p>Environmental Resources Management ERM</p></div>	SITE FEATURE INVENTORY OBSERVATIONS AND FINDINGS FORMER RAEKO PRODUCTS SITE 24 SPENCER STREET ROCHESTER, NEW YORK	DRAWN EFR/ELMF SCALE AS NOTED	DATE 1/26/07 JOB NO. 0021427-04	REVISION DATE: 0021427-04-010	DRAWING NO. 2-1	



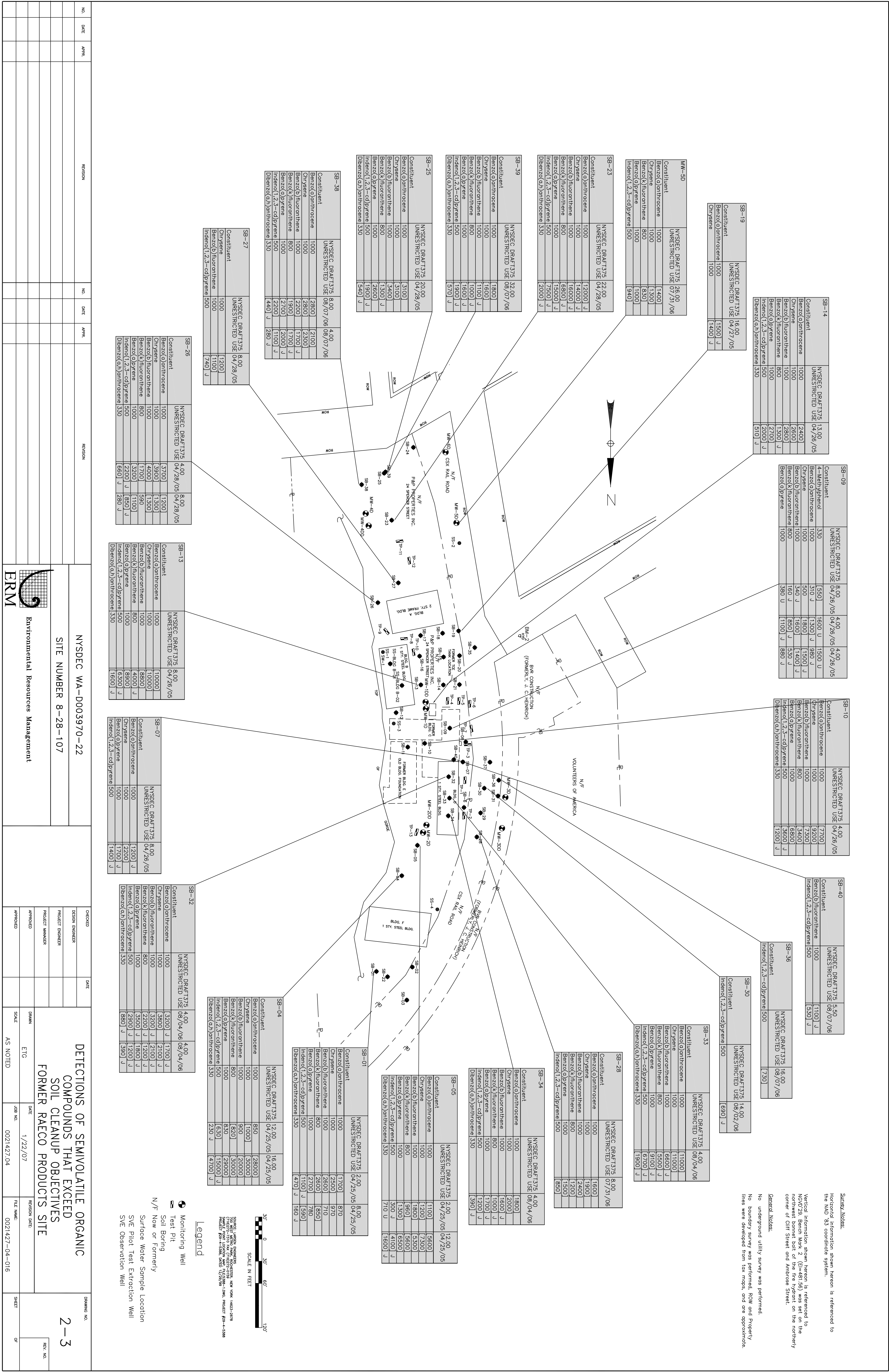


Survey Notes:  
Horizontal information shown hereon is referenced to the NAD '83 coordinate system.

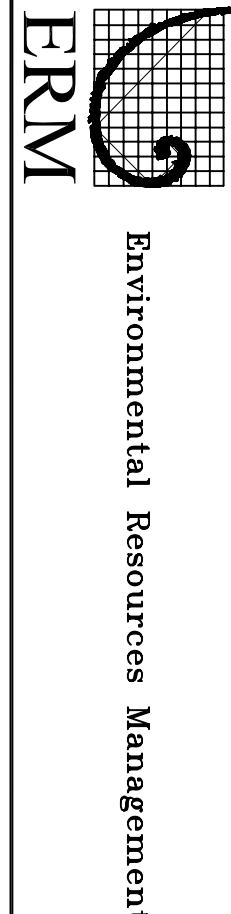
Vertical information shown hereon is referenced to the North American Vertical Datum of 1988. The northwest corner bolt of the fire hydrant on the northerly corner of Cliff Street and Ambrose Street.

General Notes:

No underground utility survey was performed.  
No boundary survey was performed. ROW and Property lines were developed from tax maps, and are approximate.



NYSDEC WA-D003970-22  
SITE NUMBER 8-28-107



DETECTIONS OF SEMI-VOLATILE ORGANIC COMPOUNDS THAT EXCEED SOIL CLEANUP OBJECTIVES FORMER RAECO PRODUCTS SITE

CHECKED	DATE
DESIGN ENGINEER	
PROJECT ENGINEER	
PROJECT MANAGER	
APPROVED	

DRAWN	DATE	REVISION DATE	FILE NAME
ETG	1/22/07		0021427-04-016
AS NOTED			

DRAWING NO.	SHEET	OF
2-3		











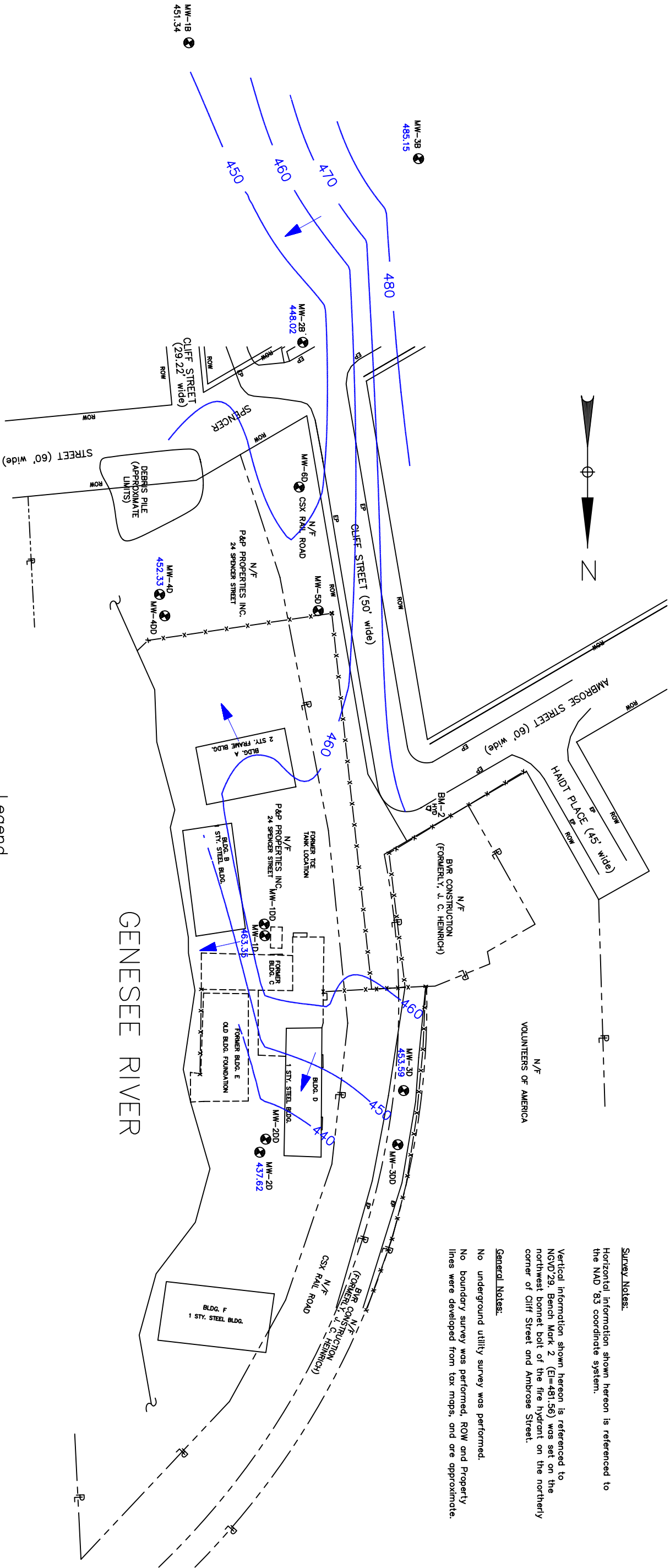




**Survey Notes:**  
Horizontal information shown hereon is referenced to the NAD 83 coordinate system.

Vertical information shown hereon is referenced to NGVD 29. Bench Mark 2 (E=481.56) was set on the northwest corner bolt of the fire hydrant on the northerly corner of Cliff Street and Ambrose Street.


**General Notes:**  
No underground utility survey was performed.  
No boundary survey was performed. ROW and Property lines were developed from tax maps, and are approximate.



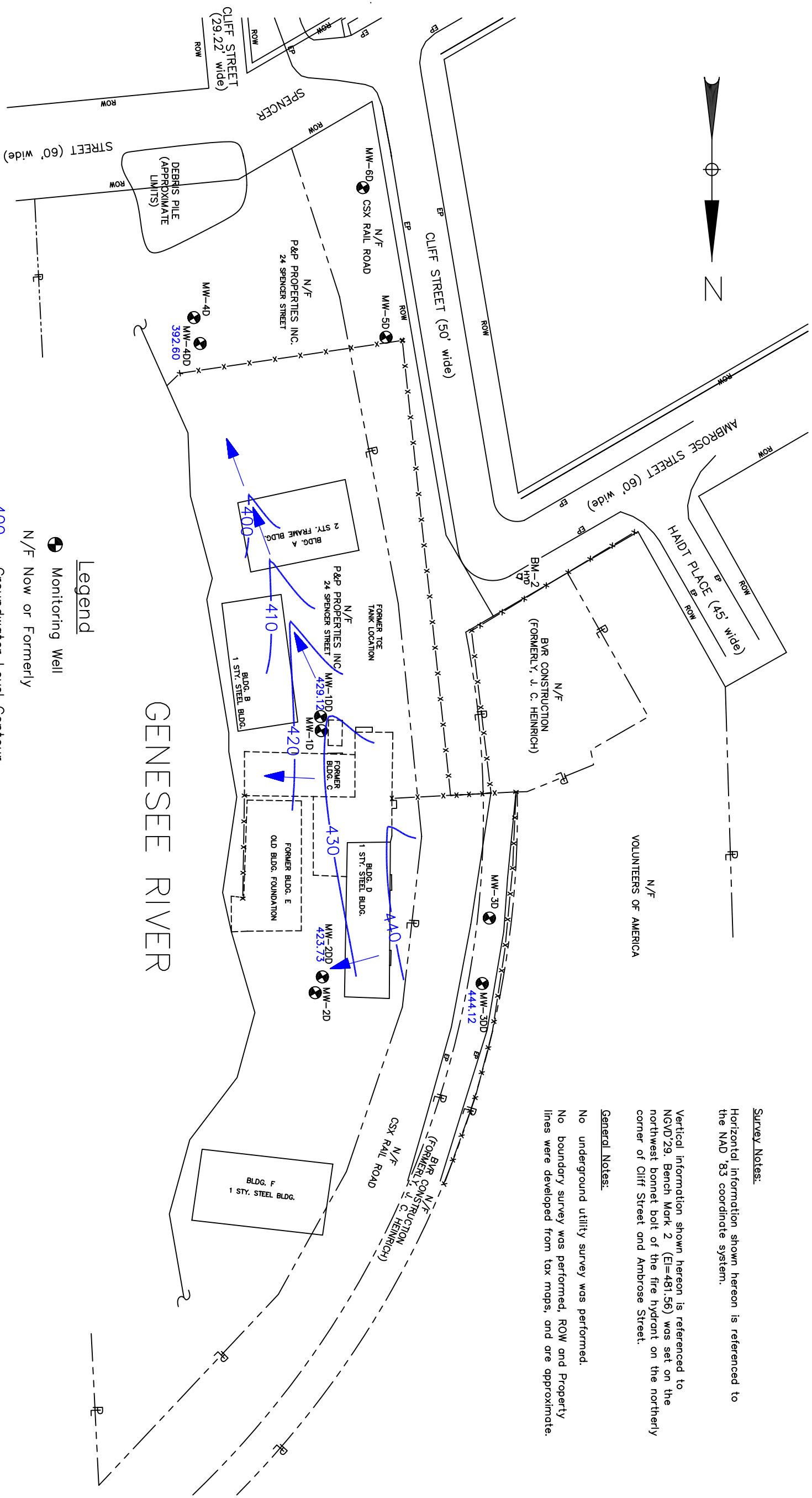
**Legend**

- Monitoring Well
- N/F Now or Formerly
- 460 Groundwater Level Contour
- 452.33 Groundwater Elevation
- Groundwater Flow



NO.		DATE		REVISION		NO.		DATE		REVISION		DRAWING NO.								
												2-8								
<div><div><div>Environmental Resources Management</div></div><div><div>NYSDEC WA-D003970-22</div><div>SITE NUMBER 8-28-107</div></div></div>												CHECKED	DATE	GROUNDWATER LEVEL CONTOUR MAP SHALLOW WELLS - 2006 MARCH 24 SPENCER STREET ROCHESTER, NEW YORK						NEXT NO. <div></div>
				DESIGN ENGINEER																
				PROJECT ENGINEER																
				PROJECT MANAGER																
				APPROVED																
				APPROVED																
				APPROVED																
				APPROVED																
				APPROVED																
				APPROVED																
				APPROVED																
				APPROVED																
				APPROVED																
				APPROVED																
				APPROVED																
				APPROVED																
				APPROVED																
				APPROVED																
				APPROVED																
				APPROVED																
				APPROVED																
				APPROVED																
				APPROVED																
				APPROVED																
				APPROVED																
				APPROVED																
				APPROVED																
				APPROVED																
				APPROVED																
				APPROVED																
				APPROVED																
				APPROVED																
				APPROVED																
				APPROVED																
				APPROVED																
				APPROVED																
				APPROVED																
				APPROVED																
				APPROVED																
				APPROVED																
				APPROVED																
				APPROVED																
				APPROVED																
				APPROVED																
				APPROVED																
				APPROVED																
				APPROVED																
				APPROVED																
				APPROVED																
				APPROVED																
				APPROVED																
				APPROVED																
				APPROVED																
				APPROVED																
				APPROVED																
				APPROVED																
				APPROVED																
				APPROVED																
				APPROVED																
				APPROVED																
				APPROVED																
				APPROVED																
				APPROVED																
				APPROVED																
				APPROVED																
				APPROVED																
				APPROVED																
				APPROVED																
				APPROVED																
				APPROVED																
				APPROVED																
				APPROVED																
				APPROVED																
				APPROVED																
				APPROVED																
				APPROVED																
				APPROVED																
				APPROVED																
				APPROVED																
				APPROVED																
				APPROVED																
				APPROVED																
				APPROVED																
				APPROVED																
				APPROVED																
				APPROVED																
				APPROVED																
				APPROVED																
				APPROVED																
				APPROVED																
				APPROVED																
				APPROVED																
				APPROVED																
				APPROVED																
				APPROVED																
				APPROVED																
				APPROVED																





Survey Notes:

Horizontal information shown hereon is referenced to the NAD '83 coordinate system.

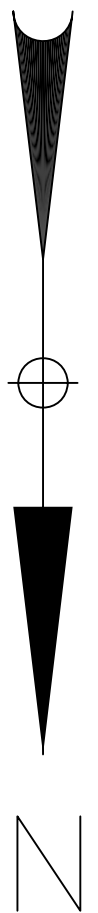
Vertical information shown hereon is referenced to NGVD'29. Bench Mark 2 (E=481.56) was set on the northwest bonnet bolt of the fire hydrant on the northerly corner of Cliff Street and Ambrose Street.

General Notes:

No underground utility survey was performed.

No boundary survey was performed, ROW and Property lines were developed from tax maps, and are approximate

[illegible]



SW-01	NYSDEC TOGS Class B	06/29/05
Constituent Surface Water	[337]	
Aluminum	100	
Iron	300	[588]

SW-02	NYSDEC TOGS Class B	06/29/05
Constituent Surface Water	[315]	
Aluminum	100	
Iron	300	[547]

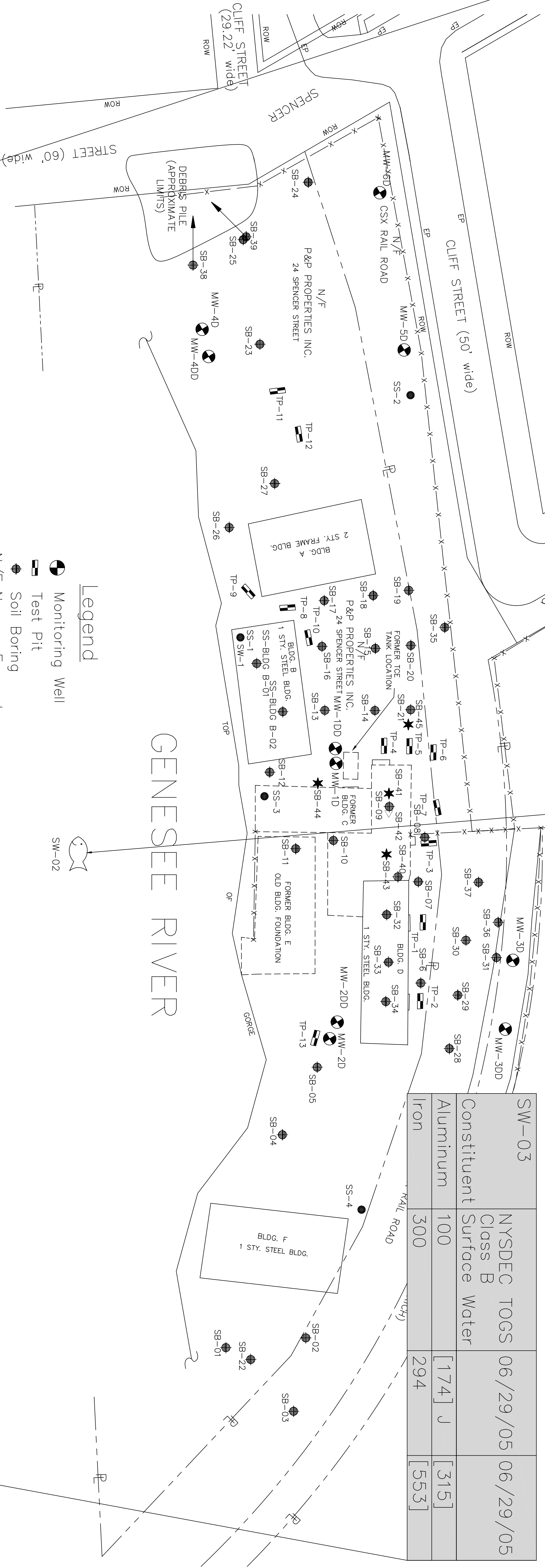
SW-03	NYSDEC TOGS Class B	06/29/05	06/29/05
Constituent Surface Water	[174]	J	[315]
Aluminum	100		
Iron	300	294	[553]

Survey Notes:  
Horizontal information shown hereon is referenced to the NAD '83 coordinate system.

Vertical information shown hereon is referenced to NGVD 29. Bench Mark 2 (E=481.56) was set on the northwest bonnet bolt of the fire hydrant on the northerly corner of Cliff Street and Ambrose Street.

General Notes:

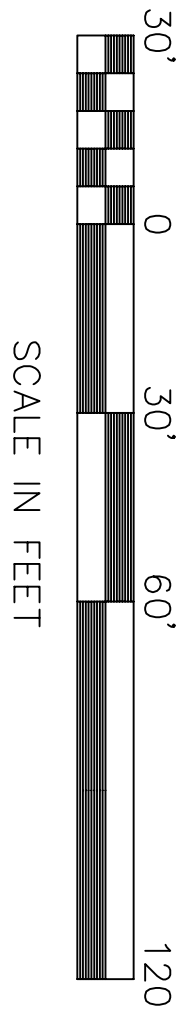
No underground utility survey was performed.  
No boundary survey was performed, ROW and Property lines were developed from tax maps, and are approximate.



Legend

- Monitoring Well
- Test Pit
- Soil Boring
- N/F Now or Formerly
- Surface Water Sample Location
- SVE Pilot Test Extraction Well
- SVE Observation Well

Note: Arrows at SB-38 & SB-39 Indicate Approximate Direction of Bore.



SOURCE: LARSEN ENGINEERS  
2005, 2006, 2007, 2008, 2009, 2010, 2011, 2012, 2013, 2014, 2015, 2016, 2017, 2018, 2019, 2020, 2021, 2022, 2023, 2024, 2025, 2026, 2027, 2028, 2029, 2030, 2031, 2032, 2033, 2034, 2035, 2036, 2037, 2038, 2039, 2040, 2041, 2042, 2043, 2044, 2045, 2046, 2047, 2048, 2049, 2050, 2051, 2052, 2053, 2054, 2055, 2056, 2057, 2058, 2059, 2060, 2061, 2062, 2063, 2064, 2065, 2066, 2067, 2068, 2069, 2070, 2071, 2072, 2073, 2074, 2075, 2076, 2077, 2078, 2079, 2080, 2081, 2082, 2083, 2084, 2085, 2086, 2087, 2088, 2089, 2090, 2091, 2092, 2093, 2094, 2095, 2096, 2097, 2098, 2099, 2100, 2101, 2102, 2103, 2104, 2105, 2106, 2107, 2108, 2109, 2110, 2111, 2112, 2113, 2114, 2115, 2116, 2117, 2118, 2119, 2120, 2121, 2122, 2123, 2124, 2125, 2126, 2127, 2128, 2129, 2130, 2131, 2132, 2133, 2134, 2135, 2136, 2137, 2138, 2139, 2140, 2141, 2142, 2143, 2144, 2145, 2146, 2147, 2148, 2149, 2150, 2151, 2152, 2153, 2154, 2155, 2156, 2157, 2158, 2159, 2160, 2161, 2162, 2163, 2164, 2165, 2166, 2167, 2168, 2169, 2170, 2171, 2172, 2173, 2174, 2175, 2176, 2177, 2178, 2179, 2180, 2181, 2182, 2183, 2184, 2185, 2186, 2187, 2188, 2189, 2190, 2191, 2192, 2193, 2194, 2195, 2196, 2197, 2198, 2199, 2200, 2201, 2202, 2203, 2204, 2205, 2206, 2207, 2208, 2209, 2210, 2211, 2212, 2213, 2214, 2215, 2216, 2217, 2218, 2219, 2220, 2221, 2222, 2223, 2224, 2225, 2226, 2227, 2228, 2229, 2230, 2231, 2232, 2233, 2234, 2235, 2236, 2237, 2238, 2239, 2240, 2241, 2242, 2243, 2244, 2245, 2246, 2247, 2248, 2249, 2250, 2251, 2252, 2253, 2254, 2255, 2256, 2257, 2258, 2259, 2260, 2261, 2262, 2263, 2264, 2265, 2266, 2267, 2268, 2269, 2270, 2271, 2272, 2273, 2274, 2275, 2276, 2277, 2278, 2279, 2280, 2281, 2282, 2283, 2284, 2285, 2286, 2287, 2288, 2289, 2290, 2291, 2292, 2293, 2294, 2295, 2296, 2297, 2298, 2299, 2300, 2301, 2302, 2303, 2304, 2305, 2306, 2307, 2308, 2309, 2310, 2311, 2312, 2313, 2314, 2315, 2316, 2317, 2318, 2319, 2320, 2321, 2322, 2323, 2324, 2325, 2326, 2327, 2328, 2329, 2330, 2331, 2332, 2333, 2334, 2335, 2336, 2337, 2338, 2339, 2340, 2341, 2342, 2343, 2344, 2345, 2346, 2347, 2348, 2349, 2350, 2351, 2352, 2353, 2354, 2355, 2356, 2357, 2358, 2359, 2360, 2361, 2362, 2363, 2364, 2365, 2366, 2367, 2368, 2369, 2370, 2371, 2372, 2373, 2374, 2375, 2376, 2377, 2378, 2379, 2380, 2381, 2382, 2383, 2384, 2385, 2386, 2387, 2388, 2389, 2390, 2391, 2392, 2393, 2394, 2395, 2396, 2397, 2398, 2399, 2400, 2401, 2402, 2403, 2404, 2405, 2406, 2407, 2408, 2409, 2410, 2411, 2412, 2413, 2414, 2415, 2416, 2417, 2418, 2419, 2420, 2421, 2422, 2423, 2424, 2425, 2426, 2427, 2428, 2429, 2430, 2431, 2432, 2433, 2434, 2435, 2436, 2437, 2438, 2439, 2440, 2441, 2442, 2443, 2444, 2445, 2446, 2447, 2448, 2449, 2450, 2451, 2452, 2453, 2454, 2455, 2456, 2457, 2458, 2459, 2460, 2461, 2462, 2463, 2464, 2465, 2466, 2467, 2468, 2469, 2470, 2471, 2472, 2473, 2474, 2475, 2476, 2477, 2478, 2479, 2480, 2481, 2482, 2483, 2484, 2485, 2486, 2487, 2488, 2489, 2490, 2491, 2492, 2493, 2494, 2495, 2496, 2497, 2498, 2499, 2500, 2501, 2502, 2503, 2504, 2505, 2506, 2507, 2508, 2509, 2510, 2511, 2512, 2513, 2514, 2515, 2516, 2517, 2518, 2519, 2520, 2521, 2522, 2523, 2524, 2525, 2526, 2527, 2528, 2529, 2530, 2531, 2532, 2533, 2534, 2535, 2536, 2537, 2538, 2539, 2540, 2541, 2542, 2543, 2544, 2545, 2546, 2547, 2548, 2549, 2550, 2551, 2552, 2553, 2554, 2555, 2556, 2557, 2558, 2559, 2560, 2561, 2562, 2563, 2564, 2565, 2566, 2567, 2568, 2569, 2570, 2571, 2572, 2573, 2574, 2575, 2576, 2577, 2578, 2579, 2580, 2581, 2582, 2583, 2584, 2585, 2586, 2587, 2588, 2589, 2590, 2591, 2592, 2593, 2594, 2595, 2596, 2597, 2598, 2599, 2600, 2601, 2602, 2603, 2604, 2605, 2606, 2607, 2608, 2609, 2610, 2611, 2612, 2613, 2614, 2615, 2616, 2617, 2618, 2619, 2620, 2621, 2622, 2623, 2624, 2625, 2626, 2627, 2628, 2629, 2630, 2631, 2632, 2633, 2634, 2635, 2636, 2637, 2638, 2639, 2640, 2641, 2642, 2643, 2644, 2645, 2646, 2647, 2648, 2649, 2650, 2651, 2652, 2653, 2654, 2655, 2656, 2657, 2658, 2659, 2660, 2661, 2662, 2663, 2664, 2665, 2666, 2667, 2668, 2669, 2670, 2671, 2672, 2673, 2674, 2675, 2676, 2677, 2678, 2679, 2680, 2681, 2682, 2683, 2684, 2685, 2686, 2687, 2688, 2689, 2690, 2691, 2692, 2693, 2694, 2695, 2696, 2697, 2698, 2699, 2700, 2701, 2702, 2703, 2704, 2705, 2706, 2707, 2708, 2709, 2710, 2711, 2712, 2713, 2714, 2715, 2716, 2717, 2718, 2719, 2720, 2721, 2722, 2723, 2724, 2725, 2726, 2727, 2728, 2729, 2730, 2731, 2732, 2733, 2734, 2735, 2736, 2737, 2738, 2739, 2740, 2741, 2742, 2743, 2744, 2745, 2746, 2747, 2748, 2749, 2750, 2751, 2752, 2753, 2754, 2755, 2756, 2757, 2758, 2759, 2760, 2761, 2762, 2763, 2764, 2765, 2766, 2767, 2768, 2769, 2770, 2771, 2772, 2773, 2774, 2775, 2776, 2777, 2778, 2779, 2780, 2781, 2782, 2783, 2784, 2785, 2786, 2787, 2788, 2789, 2790, 2791, 2792, 2793, 2794, 2795, 2796, 2797, 2798, 2799, 2800, 2801, 2802, 2803, 2804, 2805, 2806, 2807, 2808, 2809, 2810, 2811, 2812, 2813, 2814, 2815, 2816, 2817, 2818, 2819, 2820, 2821, 2822, 2823, 2824, 2825, 2826, 2827, 2828, 2829, 2830, 2831, 2832, 2833, 2834, 2835, 2836, 2837, 2838, 2839, 2840, 2841, 2842, 2843, 2844, 2845, 2846, 2847, 2848, 2849, 2850, 2851, 2852, 2853, 2854, 2855, 2856, 2857, 2858, 2859, 2860, 2861, 2862, 2863, 2864, 2865, 2866, 2867, 2868, 2869, 2870, 2871, 2872, 2873, 2874, 2875, 2876, 2877, 2878, 2879, 2880, 2881, 2882, 2883, 2884, 2885, 2886, 2887, 2888, 2889, 2890, 2891, 2892, 2893, 2894, 2895, 2896, 2897, 2898, 2899, 2900, 2901, 2902, 2903, 2904, 2905, 2906, 2907, 2908, 2909, 2910, 2911, 2912, 2913, 2914, 2915, 2916, 2917, 2918, 2919, 2920, 2921, 2922, 2923, 2924, 2925, 2926, 2927, 2928, 2929, 2930, 2931, 2932, 2933, 2934, 2935, 2936, 2937, 2938, 2939, 2940, 2941, 2942, 2943, 2944, 2945, 2946, 2947, 2948, 2949, 2950, 2951, 2952, 2953, 2954, 2955, 2956, 2957, 2958, 2959, 2960, 2961, 2962, 2963, 2964, 2965, 2966, 2967, 2968, 2969, 2970, 2971, 2972, 2973, 2974, 2975, 2976, 2977, 2978, 2979, 2980, 2981, 2982, 2983, 2984, 2985, 2986, 2987, 2988, 2989, 2990, 2991, 2992, 2993, 2994, 2995, 2996, 2997, 2998, 2999, 3000, 3001, 3002, 3003, 3004, 3005, 3006, 3007, 3008, 3009, 3010, 3011, 3012, 3013, 3014, 3015, 3016, 3017, 3018, 3019, 3020, 3021, 3022, 3023, 3024, 3025, 3026, 3027, 3028, 3029, 3030, 3031, 3032, 3033, 3034, 3035, 3036, 3037, 3038, 3039, 3040, 3041, 3042, 3043, 3044, 3045, 3046, 3047, 3048, 3049, 3050, 3051, 3052, 3053, 3054, 3055, 3056, 3057, 3058, 3059, 3060, 3061, 3062, 3063, 3064, 3065, 3066, 3067, 3068, 3069, 3070, 3071, 3072, 3073, 3074, 3075, 3076, 3077, 3078, 3079, 3080, 3081, 3082, 3083, 3084, 3085, 3086, 3087, 3088, 3089, 3090, 3091, 3092, 3093, 3094, 3095, 3096, 3097, 3098, 3099, 3100, 3101, 3102, 3103, 3104, 3105, 3106, 3107, 3108, 3109, 3110, 3111, 3112, 3113, 3114, 3115, 3116, 3117, 3118, 3119, 3120, 3121, 3122, 3123, 3124, 3125, 3126, 3127, 3128, 3129, 3130, 3131, 3132, 3133, 3134, 3135, 3136, 3137, 3138, 3139, 3140, 3141, 3142, 3143, 3144, 3145, 3146, 3147, 3148, 3149, 3150, 3151, 3152, 3153, 3154, 3155, 3156, 3157, 3158, 3159, 3160, 3161, 3162, 3163, 3164, 3165, 3166, 3167, 3168, 3169, 3170, 3171, 3172, 3173, 3174, 3175, 3176, 3177, 3178, 3179, 3180, 3181, 3182, 3183, 3184, 3185, 3186, 3187, 3188, 3189, 3190, 3191, 3192, 3193, 3194, 3195, 3196, 3197, 3198, 3199, 3200, 3201, 3202, 3203, 3204, 3205, 3206, 3207, 3208, 3209, 3210, 3211, 3212, 3213, 3214, 3215, 3216, 3217, 3218, 3219, 3220, 3221, 3222, 3223, 3224, 3225, 3226, 3227, 3228, 3229, 3230, 3231, 3232, 3233, 3234, 3235, 3236, 3237, 3238, 3239, 3240, 3241, 3242, 3243, 3244, 3245, 3246, 3247, 3248, 3249, 3250, 3251, 3252, 3253, 3254, 3255, 3256, 3257, 3258, 3259, 3260, 3261, 3262, 3263, 3264, 3265, 3266, 3267, 3268, 3269, 3270, 3271, 3272, 3273, 3274, 3275, 3276, 3277, 3278, 3279, 3280, 3281, 3282, 3283, 3284, 3285, 3286, 3287, 3288, 3289, 3290, 3291, 3292, 3293, 3294, 3295, 3296, 3297, 3298, 3299, 3300, 3301, 3302, 3303, 3304, 3305, 3306, 3307, 3308, 3309, 3310, 3311, 3312, 3313, 3314, 3315, 3316, 3317, 3318, 3319, 3320, 3321, 3322, 3323, 3324, 3325, 3326, 3327, 3328, 3329, 3330, 3331, 3332, 3333, 3334, 3335, 3336, 3337, 3338, 3339, 3340, 3341, 3342, 3343, 3344, 3345, 3346, 3347, 3348, 3349, 3350, 3351, 3352, 3353, 3354, 3355, 3356, 3357, 3358, 3359, 3360, 3361, 3362, 3363, 3364, 3365, 3366, 3367, 3368, 3369, 3370, 3371, 3372, 3373, 3374, 3375, 3376, 3377, 3378, 3379, 3380, 3381, 3382, 3383, 3384, 3385, 3386, 3387, 3388, 3389, 3390, 3391, 3392, 3393, 3394, 3395, 3396, 3397, 3398, 3399, 3400, 3401, 3402, 3403, 3404, 3405, 3406, 3407, 3408, 3409, 3410, 3411, 3412, 3413, 3414, 3415, 3416, 3417, 3418, 3419, 3420, 3421, 3422, 3423, 3424, 3425, 3426, 3427, 3428, 3429, 3430, 3431, 3432, 3433, 3434, 3435, 3436, 3437, 3438, 3439, 3440, 3441, 3442, 3443, 3444, 3445, 3446, 3447, 3448, 3449, 3450, 3451, 3452, 3453, 3454, 3455, 3456, 3457, 3458, 3459, 3460, 3461, 3462, 3463, 3464, 3465, 3466, 3467, 3468, 3469, 3470, 3471, 3472, 3473, 3474, 3475, 3476, 3477, 3478, 3479, 3480, 3481, 3482, 3483, 3484, 3485, 3486, 3487, 3488, 3489, 3490, 3491, 3492, 3493, 3494, 3495, 3496, 3497, 3498, 3499, 3500, 3501, 3502, 3503, 3504, 3505, 3506, 3507, 3508, 3509, 3510, 3511, 3512, 3513, 3514, 3515, 3516, 3517, 3518, 3519, 3520, 3521, 3522, 3523, 3524, 3525, 3526, 3527, 3528, 3529, 3530, 3531, 3532, 3533, 3534, 3535, 3536, 3537, 3538, 3539, 3540, 3541, 3542, 3543, 3544, 3545, 3546, 3547, 3548, 3549, 3550, 3551, 3552, 3553, 3554, 3555, 3556, 3557, 3558, 3559, 3560, 3561, 3562, 3563, 3564, 3565, 3566, 3567, 3568, 3569, 3570, 3571, 3572, 3573, 3574, 3575, 3576, 3577, 3578, 3579, 3580, 3581, 3582, 3583, 3584, 3585, 3586, 3587, 3588, 3589, 3590, 3591, 3592, 3593, 3594, 3595, 3596, 3597, 3598, 3599, 3600, 3601, 3602, 3603, 3604, 3605, 3606, 3607, 3608, 3609, 3610, 3611, 3612, 3613, 3614, 3615, 3616, 3617, 3618, 3619, 3620, 3621, 3622, 3623, 3624, 3625, 3626, 3627, 3628, 3629, 3630, 3631, 3632, 3633, 3634, 3635, 3636, 3637, 3638, 3639, 3640, 3641, 3642, 3643, 3644, 3645, 3646, 3647, 3648, 3649, 3650, 3651, 3652, 3653, 3654, 3655, 3656, 3657, 3658, 3659, 3660, 3661, 3662, 3663, 3664, 3665, 3666, 3667, 3668, 3669, 3670, 3671, 3672, 3673, 3674, 3675, 3676, 3677, 3678, 3679, 3680, 3681, 3682, 3683, 3684, 3685, 3686, 3687, 3688, 3689, 3690, 3691, 3692, 3693, 3694, 3695, 3696, 3697, 3698, 3699, 3700, 3701, 3702, 3703, 3704, 3705, 3706, 3707, 3708, 3709, 3710, 3711, 3712, 3713, 3714, 3715, 3716, 3717, 3718, 3719, 3720, 3721, 3722, 3723, 3724, 3725, 3726, 3727, 3728, 3729, 3730, 3731, 3732, 3733, 3734, 3735, 3736, 3737, 3738, 3739, 3740, 3741, 3742, 3743, 3744, 3745, 3746, 3747, 3748, 3749, 3750, 3751, 3752, 3753, 3754, 3755, 3756, 3757, 3758, 3759, 3760, 3761, 3762, 3763, 3764, 3765, 3766, 3767, 3768, 3769, 3770, 3771, 3772, 3773, 3774, 3775, 3776, 3777, 3778, 3779, 3780, 3781, 3782, 3783, 3784, 3785, 3786, 3787, 3788, 3789, 3790, 3791, 3792, 3793, 3794, 3795, 3796, 3797, 3798, 3799, 3800, 3801, 3802, 3803, 3804, 3805, 3806, 3807, 3808, 3809, 3810, 3811, 3812, 3813, 3814, 3815, 3816, 3817, 3818, 3819, 3820, 3821, 3822, 3823, 3824, 3825, 3826, 3827, 3828,

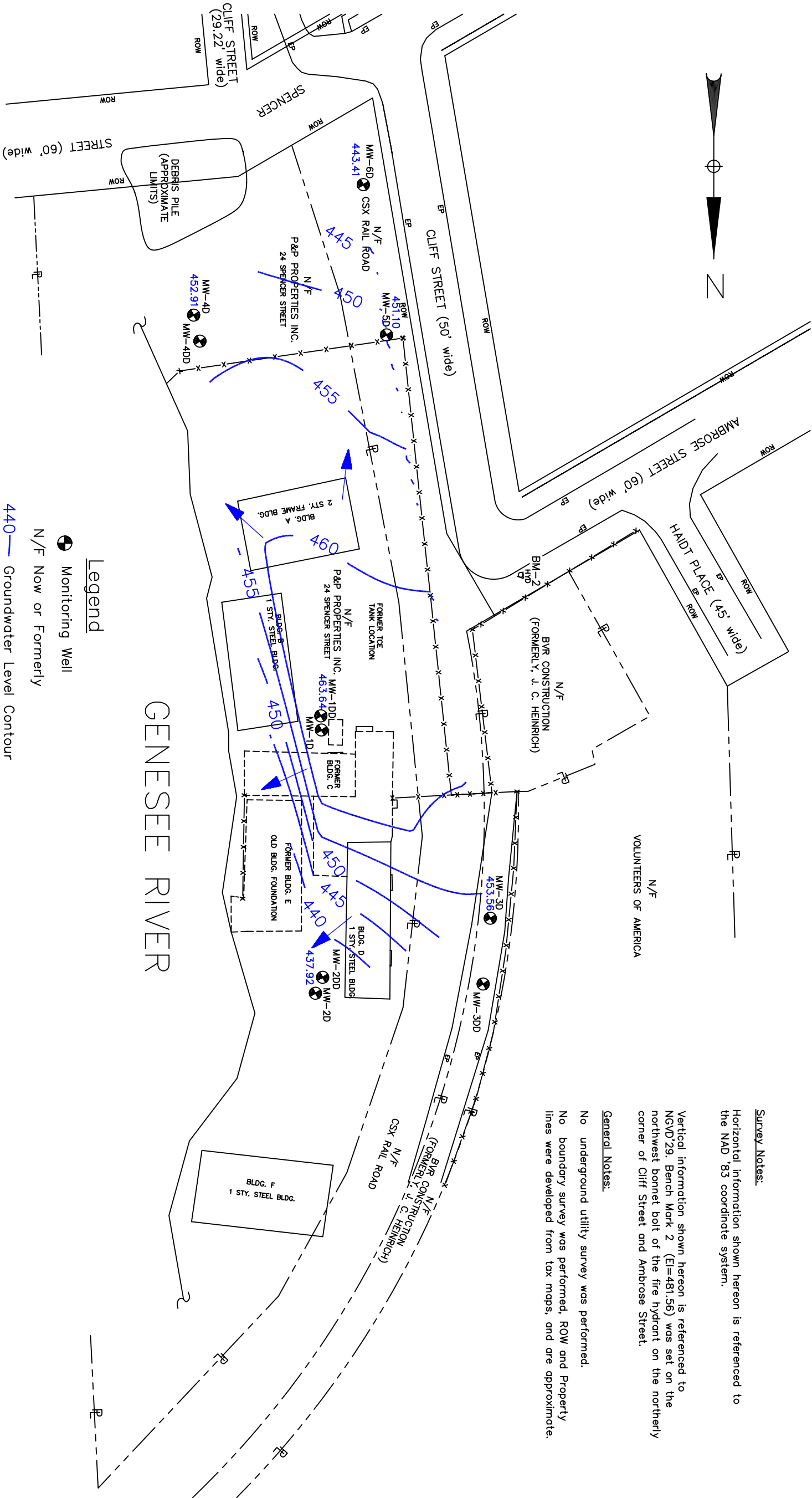




**Survey Notes:**  
Horizontal information shown hereon is referenced to the NAD '83 coordinate system.

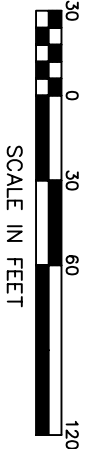
Vertical information shown hereon is referenced to NGVD'29. Bench Mark 2 (El=481.56) was set on the northwest bonnet bolt of the fire hydrant on the northerly corner of Cliff Street and Ambrose Street.

**General Notes:**  
No underground utility survey was performed.  
No boundary survey was performed, ROW and Property lines were developed from tax maps, and are approximate.



**Legend**

- Monitoring Well
- N/F Now or Formerly
- 440 Groundwater Level Contour
- 452.91 Groundwater Elevation
- Groundwater Flow



SOURCE: LARSEN ENGINEERS  
700 WEST METRO PARK, ROCHESTER, NEW YORK 14623-2678  
(716)272-7310 FAX (716)272-0198  
SAMPLE POINT LOCATION MAP, FILE:5398-1.DWG, PROJECT #29-4-S388  
PROJECT #29-4-S388, DATED 12/29/98

NO.		DATE	APPR.	REVISION		NO.	DATE	APPR.	REVISION	

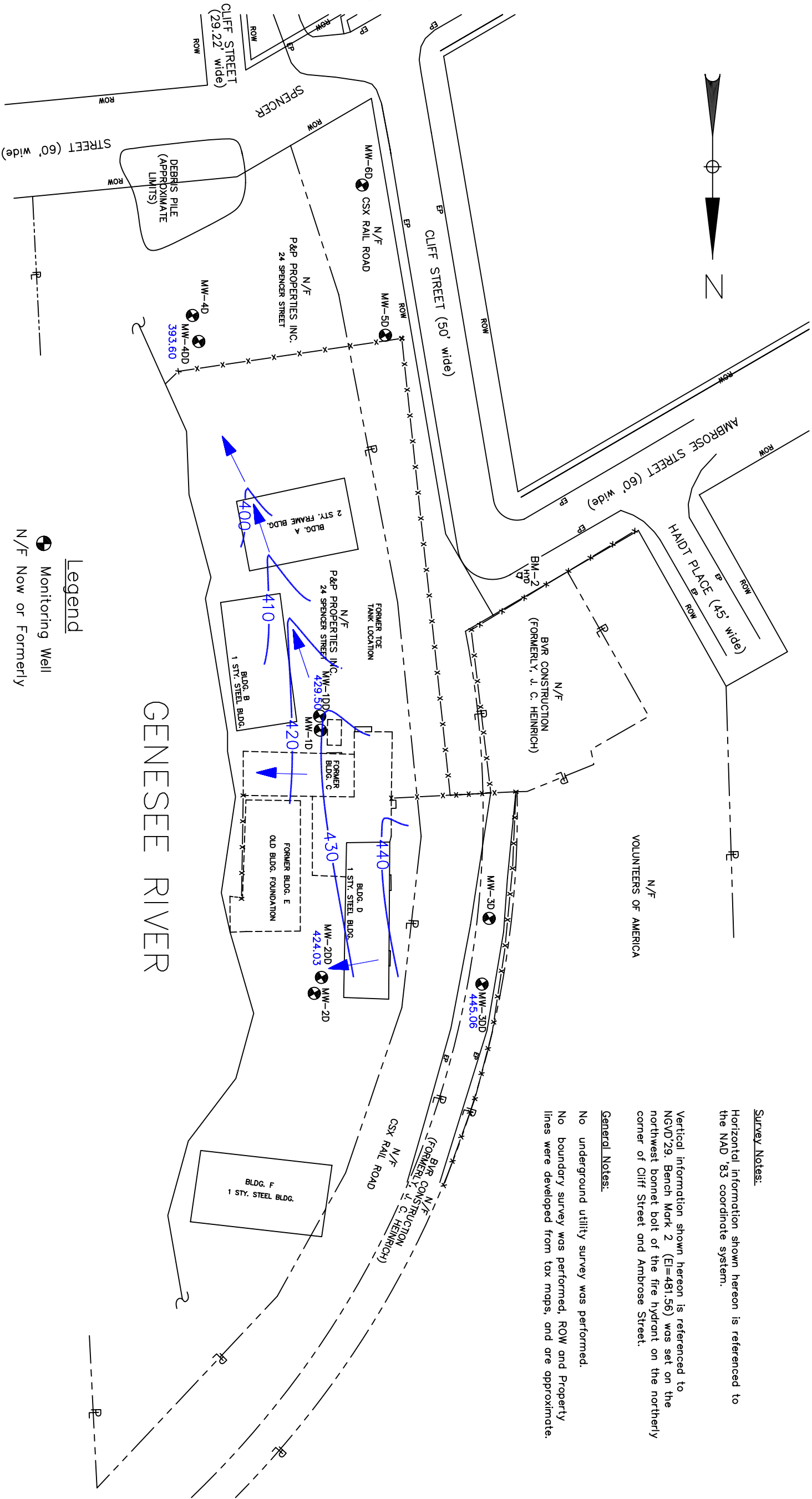


**Survey Notes:**  
Horizontal information shown hereon is referenced to the NAD '83 coordinate system.

Vertical information shown hereon is referenced to NGVD'29, Bench Mark 2 (EI=481.56) was set on the northwest bonnet bolt of the fire hydrant on the northerly corner of Cliff Street and Ambrose Street.

**General Notes:**

No underground utility survey was performed.  
No boundary survey was performed, ROW and Property lines were developed from tax maps, and are approximate.



**Legend**

Monitoring Well  
N/F Now or Formerly

410— Groundwater Level Contour

424.03 Groundwater Elevation

Groundwater Flow



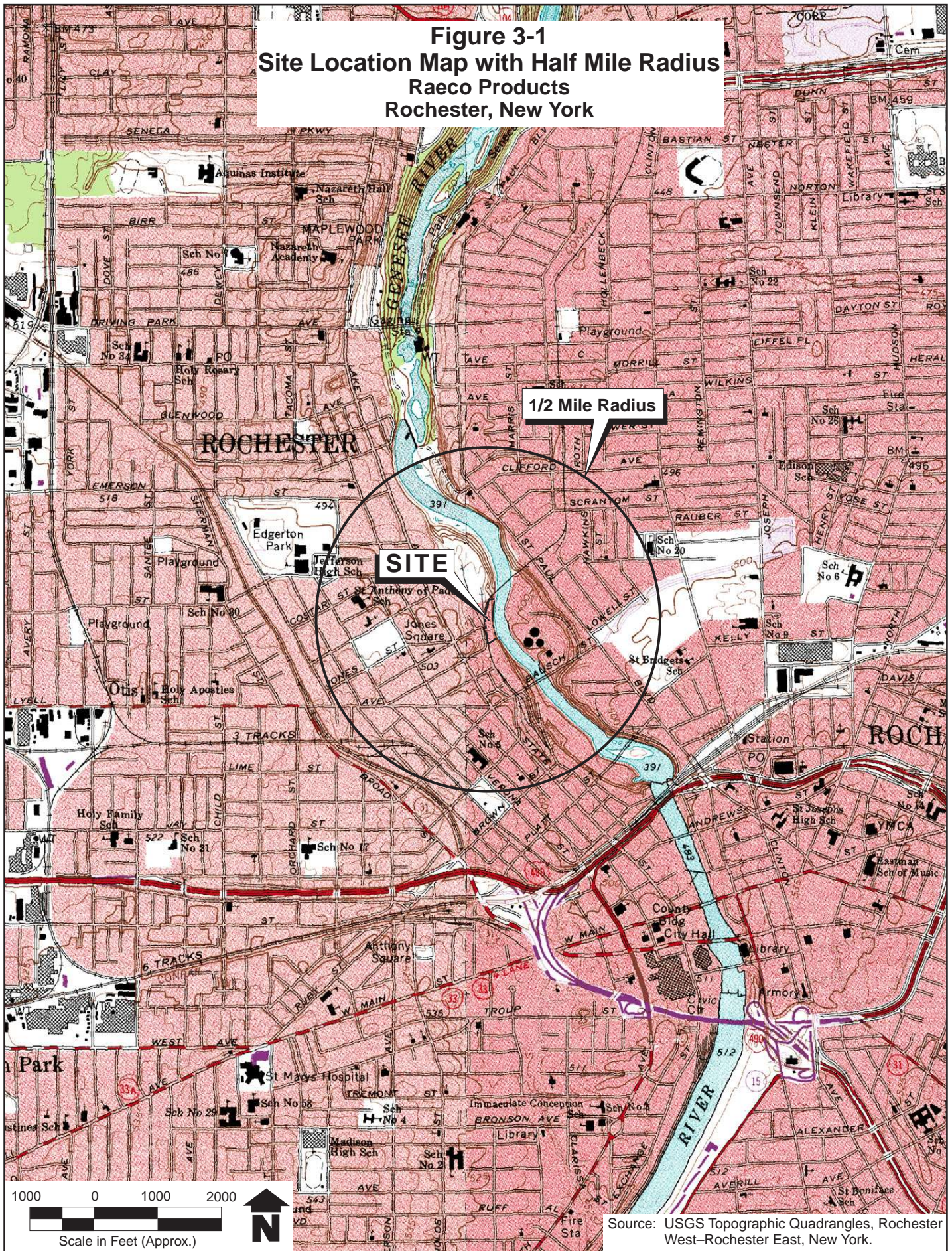
SCALE IN FEET

SOURCE: LUSSEN ENGINEERS  
700 WEST HART RD.  
ROCHESTER, NEW YORK 14623-2678  
(716)272-7310 FAX (716)272-0159  
SAMPLE POINT LOCATION MAP, FILE:5398-1.DWG, PROJECT #29-4-5398  
PROJECT #29-4-5398, DATED 12/29/99

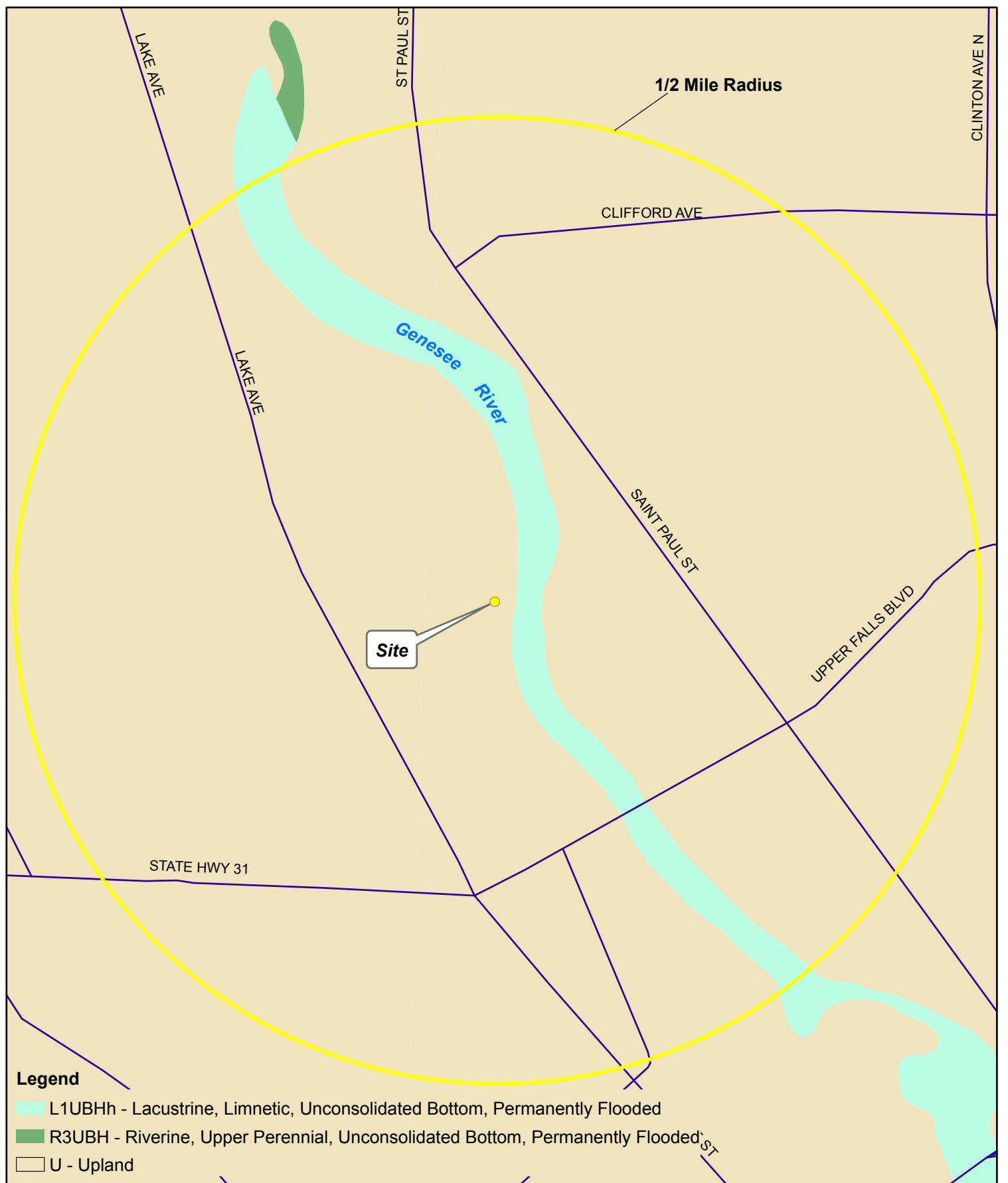
NO.		DATE	APPR.	REVISION		NO.	DATE	APPR.	REVISION	



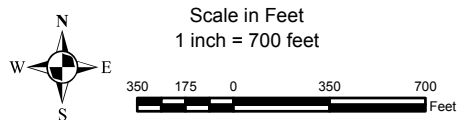
**Figure 3-1**  
**Site Location Map with Half Mile Radius**  
**Raeco Products**  
**Rochester, New York**





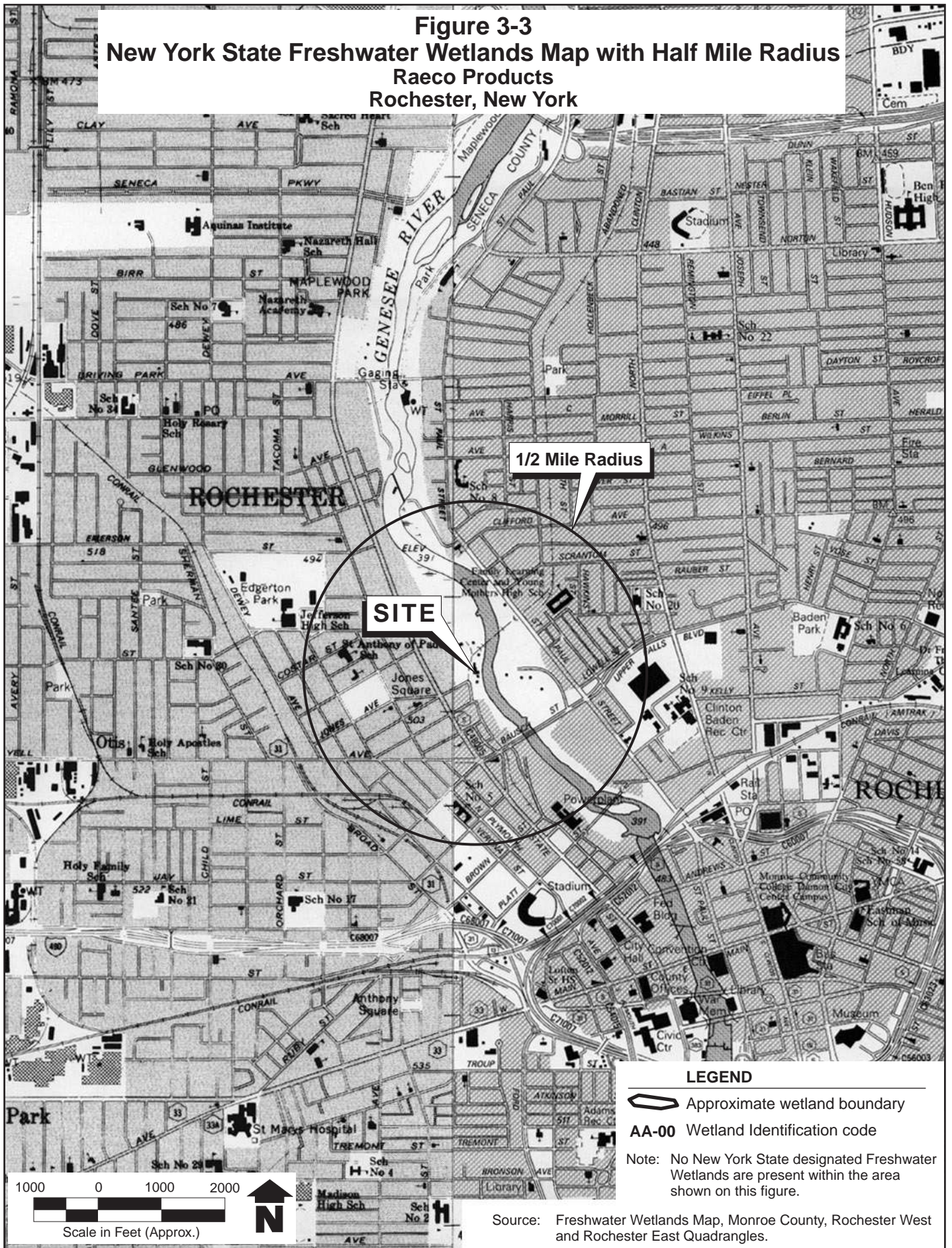


Source: U.S. Fish & Wildlife Service,  
National Wetlands Inventory  
Quads - Rochester East and Rochester West



**FIGURE 3-2**  
**National Wetland Inventory Map**  
**with Half Mile Radius**  
**Raeco Products**  
**Rochester, New York**

**Figure 3-3**  
**New York State Freshwater Wetlands Map with Half Mile Radius**  
**Raeco Products**  
**Rochester, New York**



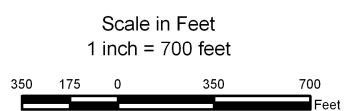




#### Legend

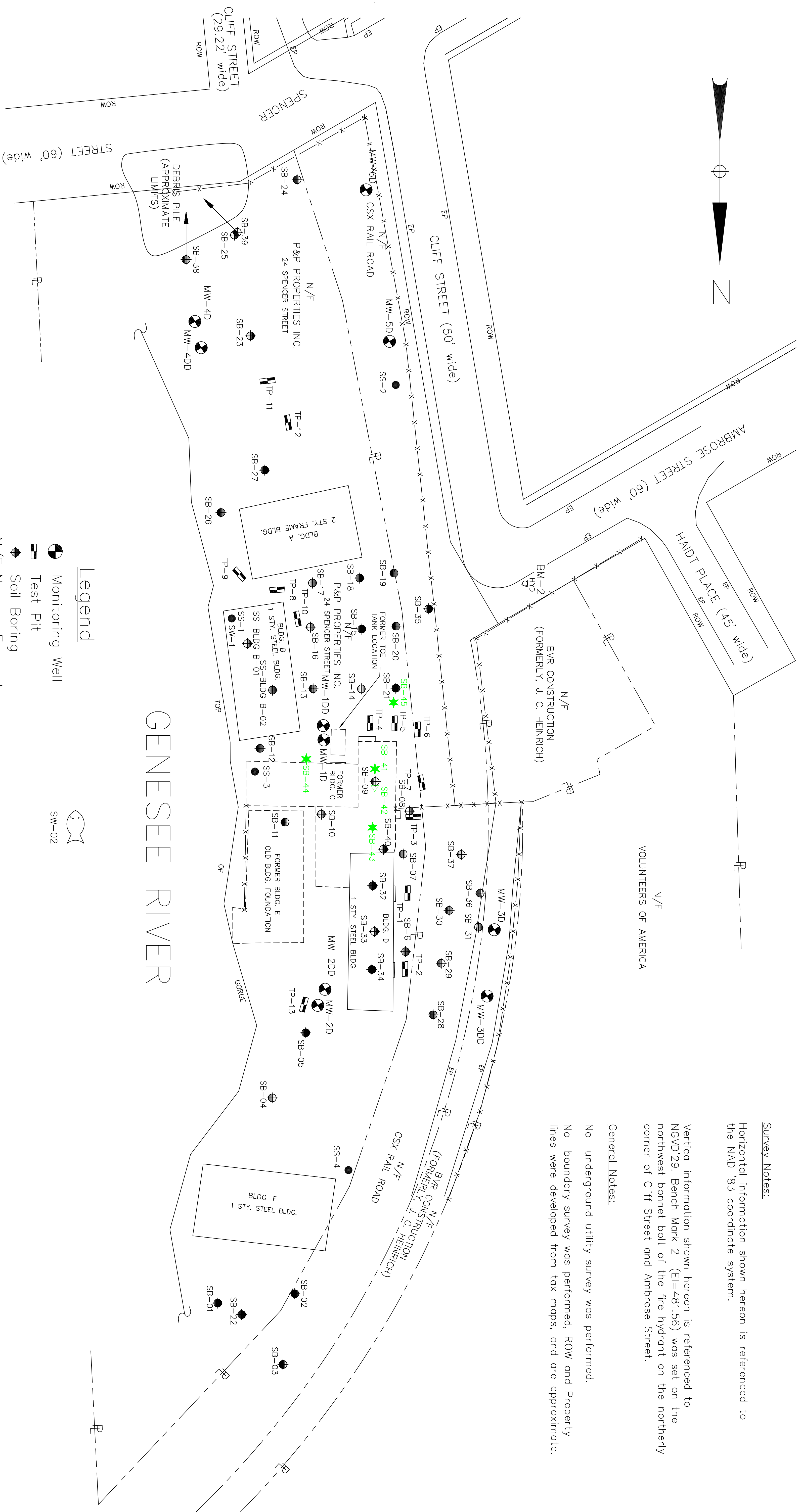
##### Habitat Coverage within 0.5 mile radius of Site

- |   |   |
|---|---|
| <span style="display: inline-block; width: 15px; height: 10px; background-color: #00a0e3; border: 1px solid black; margin-right: 5px;"></span> Natural Stream | <span style="display: inline-block; width: 15px; height: 10px; background-color: #f4b084; border: 1px solid black; margin-right: 5px;"></span> Terrestrial Cultural |
| <span style="display: inline-block; width: 15px; height: 10px; background-color: #4caf50; border: 1px solid black; margin-right: 5px;"></span> Forest Upland  | <span style="display: inline-block; width: 15px; height: 10px; background-color: #8d6e63; border: 1px solid black; margin-right: 5px;"></span> Open Upland          |



**FIGURE 3-4**  
Habitat Cover Type Map  
with Half Mile Radius  
Raeco Products  
Rochester, New York





Horizontal information shown hereon is referenced to the NAD '83 coordinate system.

Vertical information shown hereon is referenced to NGVD'29. Bench Mark 2 (E=481.56) was set on the northwest bonnet bolt of the fire hydrant on the northerly corner of Cliff Street and Ambrose Street.

No underground utility survey was performed

No boundary survey was performed, ROW and Property lines were developed from tax maps, and are approximate

[illegible]