



O'BRIEN & GERE

RECEIVED

JUN 05 2009

DER/HAZ. WASTE REMED
REGION 8

CONTAINS CONFIDENTIAL DATA - NOT INTENDED FOR PUBLIC DISTRIBUTION OR FOIL/FOIA

May 29, 2009

Mr. Todd Bigelow
Batesville Casket Company, Inc.
One Batesville Boulevard
Batesville, IN 47006
VIA FEDERAL EXPRESS

Re: Soil Vapor Intrusion Sampling Results
March 26, 2009

Dear Mr. Bigelow:

As you are aware, soil vapor intrusion sampling was conducted at the Batesville Casket Company facility located at 40 Pixley Industrial Parkway, Town of Gates, New York. The sampling was conducted on March 26, 2009. The sampling was conducted by O'Brien & Gere on behalf of ITT Corporation (ITT) with oversight by New York State Department of Environmental Conservation (NYSDEC) and New York State Department of Health (NYSDOH). This letter provides you with validated results of the sampling that was conducted at your facility in accordance with the current access agreement between you and ITT.

The sampling of sub-slab vapor from under the building's concrete slab (sub-slab), from within the building (indoor air), and from outside and upwind of the building (ambient air) was conducted at the facility on March 26, 2009. Approximate sample locations are presented in Figure 1. The samples were analyzed by a laboratory certified by the NYSDOH and went through an independent validation process. ITT and O'Brien & Gere submitted all sampling results, to the NYSDEC and NYSDOH as required by law.

Table 1, attached to this letter, presents a summary of the results. You will note that trichloroethene (TCE) was detected in indoor air at all four sample locations but not detected in any of the sub-slab samples. The levels of TCE found in the indoor air are consistent with typical background levels found in buildings from everyday uses of chemicals and are not a concern. All compounds included in the analysis, whether they were detected or not, are listed in the attached laboratory report. It is our understanding that you will inform the occupants at this property of the sampling results.

I:\Itt.3356\35273.Itt-Auto-Fh-192_corres\VI\Batesville\2009 Result Letter\Batesville_Results_Letter_final with header.doc

5000 River Road, P.O. Box 1071, Skaneateles, New York 13152-1071
(315) 437-6100 • FAX (315) 462-7534 • info@obg.com

www.obg.com or www.obg.com

Mr. Todd Bigelow
May 29, 2009
Page 2

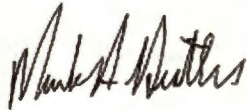
Based upon the results, and consistent with the NYSDOH Soil Vapor Intrusion Guidance document¹, no further sampling is needed for your property. If you have any questions or wish to discuss your results, please contact any of the people listed below:

Frank L. Sowers, P.E., NYSDEC Project Manager 585-226-5357
Katherine Comerford, NYSDOH Project Manager 585-423-8156
Jeffrey M. Kosmala, P.E., Monroe County Department of Health 585-753-5470

Thank you for your cooperation during vapor intrusion sampling at your facility.

Very truly yours,

O'BRIEN & GERE ENGINEERS, INC.



Mark A. Distler
Vice President

ITT CORPORATION



Teresa P. Olmsted
Director, Environmental Programs

Attachments: Figure 1 – Sample Locations
Table 1 – Summary of Soil Vapor Intrusion Sampling Results
Attachment 1 – Laboratory Report

cc: Frank Sowers, P.E. – NYSDEC
Katherine Comerford – NYSDOH
Jeffrey Kosmala – MCDOPH

¹ "Guidance for Evaluating Soil Vapor Intrusion in the State of New York," NYSDOH, October 2006.

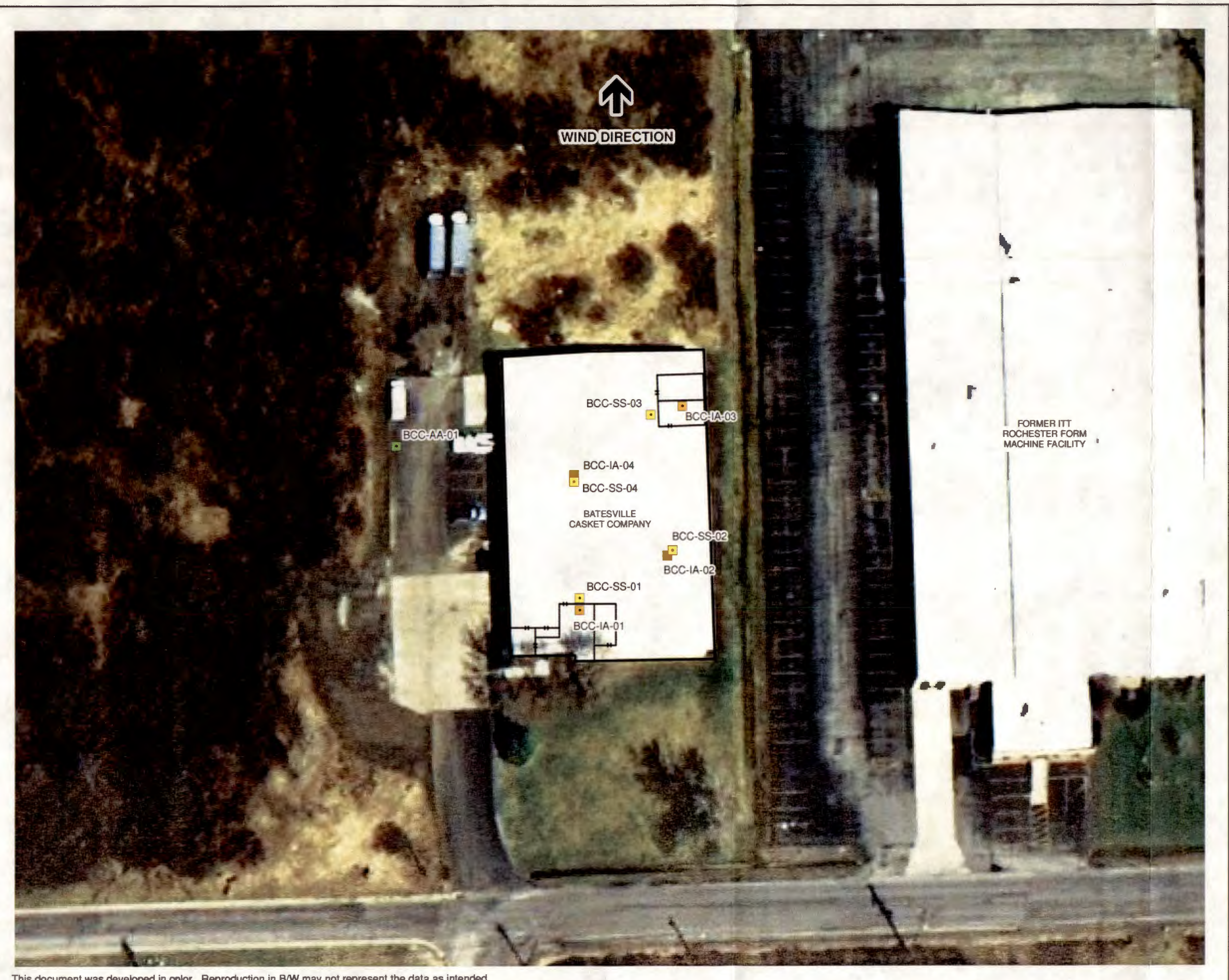


FIGURE 1



LEGEND

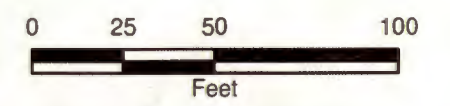
SAMPLE TYPE

- INDOOR AIR SAMPLE
- SUB-SLAB SAMPLE
- AMBIENT AIR SAMPLE

NOTE:
SUB-SLAB AND INDOOR AIR SAMPLE
LOCATIONS ARE APPROXIMATE.

FORMER ITT ROCHESTER FORM
MACHINE FACILITY
TOWN OF GATES, NEW YORK
SITE #8-28-112

VAPOR INTRUSION
SAMPLING LOCATIONS
MARCH 2009



APRIL 2009
3356.35273



Table 1
Soil Vapor Intrusion Sample Results
March 26, 2009 Sampling Event
Former ITT Rochester Form Machine Facility
Town of Gates, New York

	Indoor Air Background Levels ^a	Sample Location:	Batesville Casket Company, Inc.														
		Location ID:	Upwind	BCC-01				BCC-02				BCC-03			BCC-04		
		Sample Type	Ambient	Indoor Air	Sub-Slab	NYSDOH Decision Matrix ^b	Indoor Air	Sub-Slab	Sub-Slab Duplicate	NYSDOH Decision Matrix ^b	Indoor Air	Sub-Slab	NYSDOH Decision Matrix ^b	Indoor Air	Sub-Slab	NYSDOH Decision Matrix ^b	
		Sample Date:	3/26/2009	3/26/2009	3/26/2009		3/26/2009	3/26/2009	3/26/2009		3/26/2009	3/26/2009		3/26/2009	3/26/2009		
RFM-Related Compounds^c																	
1,1,1-Trichloroethane (TCA)	20.6		< 0.22	< 0.22	< 0.87	NFA	< 0.22	1.5	1.4	NFA	< 0.22	4.0	NFA	< 0.22 UJ	< 0.87	NFA	
Tetrachloroethane (PCE)	15.9		0.88	0.62	< 1.1	NFA	0.58	< 1.1	< 1.1	NFA	0.48	1.2	NFA	0.60 J	12	NFA	
1,1-Dichloroethane (DCA)	<0.7		< 0.16	< 0.16	< 0.65	NFA	< 0.16	< 0.65	< 0.65	NFA	< 0.16	< 0.65	NFA	< 0.16 UJ	< 0.65	NFA	
1,1-Dichloroethene (1,1-DCE)	<1.4		< 0.16	< 0.16	< 0.63	NFA	< 0.16	< 0.63	< 0.63	NFA	< 0.16	< 0.63	NFA	< 0.16 UJ	< 0.63	NFA	
cis-1,2-Dichloroethene (cis-1,2-DCE)	<1.9		< 0.16	< 0.16	< 0.63	NFA	< 0.16	< 0.63	< 0.63	NFA	< 0.16	< 0.63	NFA	< 0.16 UJ	< 0.63	NFA	
Trichloroethene (TCE)	4.2		< 0.21	0.32	< 0.86	NFA/IRE	0.49	< 0.86	< 0.86	NFA/IRE	0.47	< 0.86	NFA/IRE	0.49 J	< 0.86	NFA/IRE	
Other Compounds																	
1,3,5-Trimethylbenzene	3.7		< 0.39	4.3	0.93	NA	9.8	1.5	< 0.79	NA	5.9	1.2	NA	7.4 J	0.84	NA	
1,3-Butadiene	<3.0		< 0.18	0.18	< 0.88	NA	< 0.18	< 0.88	< 0.88	NA	< 0.18	< 0.88	NA	< 0.18 UJ	< 0.88	NA	
2,2,4-Trimethylpentane	NA		< 0.19	0.56	< 0.75	NA	0.84	< 0.75	1.2	NA	0.89	< 0.75	NA	0.70 J	< 0.75	NA	
4-Ethyltoluene	3.6		< 0.20	5.9	1.1	NA	10	2.1	1.0	NA	6.9	1.6	NA	7.9 J	1.4	NA	
Benzene	9.4		0.61	1.6	1.2	NA	2.1	1.0	0.99	NA	2.4	1.1	NA	1.9 J	0.86	NA	
Carbon Tetrachloride	<1.3		0.62	0.57	< 1.0	NA	0.54	< 1.0	< 1.0	NA	0.49	< 1.0	NA	0.58 J	< 1.0	NA	
Cyclohexane	NA		< 0.14	0.55	0.72	NA	1.0	4.5	4.5	NA	0.89	1.8	NA	0.83 J	< 0.55	NA	
Dichlorodifluoromethane	16.5		3.4	3.3	< 2.0	NA	3.1	< 2.0	< 2.0	NA	2.2	< 2.0	NA	3.3 J	< 2.0	NA	
Ethylbenzene	5.7		0.18	6.1	0.96	NA	6.9	1.3	2.7	NA	5.6	0.74	NA	5.6 J	0.91	NA	
m&p-Xylenes	22.2		0.48	21	4.2	NA	26	5.6	8.3	NA	21	5.2	NA	21 J	5.2	NA	
n-Heptane	NA		0.41	1.1	1.9	NA	1.8	4.1	3.9	NA	5.7	4.1	NA	1.6 J	1.4	NA	
n-Hexane	10.2		0.60	2.9	1.8	NA	5.3	4.6	4.6	NA	4.9	4.6	NA	4.6 J	< 1.4	NA	
o-Xylene	7.9		0.18	4.8	1.7	NA	6.5	2.1	2.3	NA	5.6	1.6	NA	5.2 J	1.9	NA	
Toluene	43		0.83	12	4.5	NA	15 D	3.8	4.1	NA	21 D	3.3	NA	16 J	6.4	NA	
Trichlorofluoromethane	18.1		1.6	1.8	3.3	NA	2.2	6.7	6.2	NA	3.3	2.7	NA	2.1 J	1.8	NA	
Xylene (total)	NA		0.61	25	6.1	NA	31	8.3 J	11 J	NA	26	6.9	NA	26 J	7.4	NA	

Note: Results are reported in units of micrograms per cubic meter ($\mu\text{g}/\text{m}^3$).

^a Indoor air concentrations measured commercial and public buildings that do not have vapor intrusion. The values are the 90th percentile values taken from the EPA 2001 BASE Database as reported in the NYSDOH vapor intrusion guidance (October 2006).

^b NYSDOH vapor intrusion guidance (Oct 2006) recommends actions based on the combination of sub-slab and corresponding indoor air concentrations (utilized for 1,1-TCA, PCE, DCA, 1,1-DCE, cis-1,2-DCE and TCE only).

^c "RFM-related compounds" are those that have been found at the former RFM site, but are not necessarily the result of a source at the former RFM site.

NA - Not available

<## - Compound not detected above the reporting limit (##).

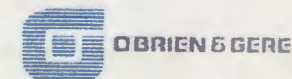
J - Qualified as approximate due to minor excursion in analytical calibration verification.

UJ - Compound not detected above the reporting limit (##) and the quantitation limit may be imprecise. Qualified as approximate due to minor excursion in analytical calibration verification.

D - Compound analyzed at second dilution factor

NFA - No further action as recommended by NYSDOH guidance.

IRE - Property owner should take reasonable and practical actions to identify source(s) and reduce exposures, as recommended by NYSDOH guidance.



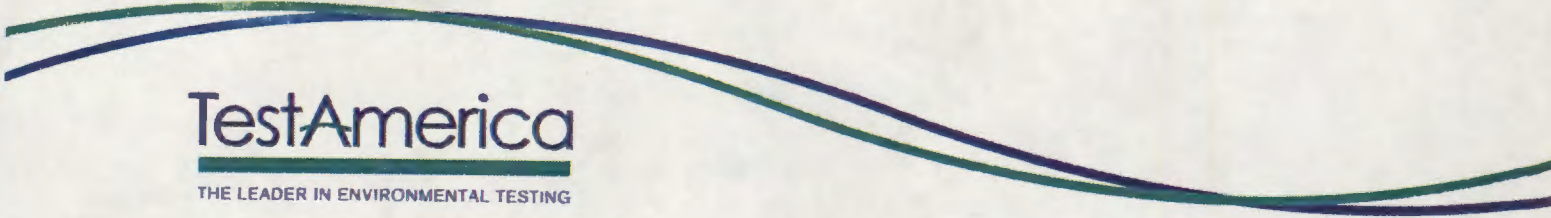
O'Brien & Gere

Contains Confidential Data - Not Intended for Public Distribution or FOIL/FOIA

I:\itt.3356\35273.1\Auto-Fh-19\2_corres\VN\Batesville\2009 Result Letter\Batesville VI Result Table_052809.xls\Batesville

ATTACHMENT 1

Laboratory Report



TestAmerica

THE LEADER IN ENVIRONMENTAL TESTING

TestAmerica Laboratories, Inc.

April 22, 2009

Mr. Mark Distler
O'Brien & Gere Laboratories
5000 Brittonfield Parkway
PO Box 4942
Syracuse, NY 13221

Re: Laboratory Project No. 29000
Case: 29000; SDG: NY130920

Dear Mr. Distler:

Enclosed are the analytical results for the samples that were received by TestAmerica Burlington on March 28th, 2009. Laboratory identification numbers were assigned, and designated as follows:

<u>Lab ID</u>	<u>Client Sample ID</u>	<u>Sample Date</u>	<u>Sample Matrix</u>
Received: 03/28/09 ETR No: 130920			
790523	BCC-IA-01-032609	03/26/09	AIR
790524	BCC-SS-01-032609	03/26/09	AIR
790525	BCC-AA-01-032609	03/26/09	AIR
790526	BCC-IA-02-032609	03/26/09	AIR
790527	BCC-SS-02-032609	03/26/09	AIR
790528	BCC-SS-02D-032609	03/26/09	AIR
790529	BCC-IA-03-032609	03/26/09	AIR
790530	BCC-SS-03-032609	03/26/09	AIR
790531	BCC-IA-04-032609	03/26/09	AIR
790532	BCC-SS-04-032609	03/26/09	AIR

Documentation of the condition of the samples at the time of their receipt and any exception to the laboratory's Sample Acceptance Policy is documented in the Sample Handling section of this submittal.

The volatile organic analyses of samples BCC-IA-02-032609, BCC-IA-03-032609 and BCC-IA-04-032609 were accomplished at dilutions based on screen analyses to ensure quantitation of all target analytes within the range of calibrated instrument response.

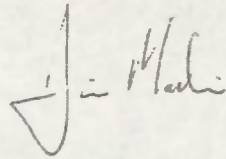
TestAmerica

THE LEADER IN ENVIRONMENTAL TESTING

Any reference within this report to Severn Trent Laboratories, Inc. or STL, should be understood to refer to TestAmerica Laboratories, Inc. (formerly known as Severn Trent Laboratories, Inc.) The analytical results associated with the samples presented in this test report were generated under a quality system that adheres to requirements specified in the NELAC standard. Release of the data in this test report and any associated electronic deliverables is authorized by the Laboratory Director's designee as verified by the following signature.

If there are any questions regarding this submittal, please contact me at 802 660-1990.

Sincerely,



for

Don Dawicki
Project Manager

TO-14/15
Result Summary

CLIENT SAMPLE NO.

BCC-IA-01-032609

Lab Name: TAL Burlington

SDG Number: NY130920

Dilution Factor: 4.00

Sample Matrix: AIR

Lab Sample No.: 790523

Date Analyzed: 4/15/2009

Date Received: 3/28/2009

Target Compound	CAS Number	Results in ppbv	Q	RL in ppbv	Results in ug/m3	Q	RL in ug/m3
Dichlorodifluoromethane	75-71-8	0.67		0.040	3.3		0.20
1,2-Dichlorotetrafluoroethane	76-14-2	0.040	U	0.040	0.28	U	0.28
Vinyl Chloride	75-01-4	0.080	U	0.080	0.20	U	0.20
1,3-Butadiene	106-99-0	0.082		0.080	0.18		0.18
Bromomethane	74-83-9	0.080	U	0.080	0.31	U	0.31
Chloroethane	75-00-3	0.080	U	0.080	0.21	U	0.21
Bromoethane	593-60-2	0.080	U	0.080	0.35	U	0.35
Trichlorofluoromethane	75-69-4	0.32		0.040	1.8		0.22
1,1-Dichloroethene	75-35-4	0.040	U	0.040	0.16	U	0.16
3-Chloropropene	107-05-1	0.080	U	0.080	0.25	U	0.25
Methylene Chloride	75-09-2	0.80	U	0.80	2.8	U	2.8
Methyl tert-Butyl Ether	1634-04-4	0.040	U	0.040	0.14	U	0.14
trans-1,2-Dichloroethene	156-60-5	0.040	U	0.040	0.16	U	0.16
n-Hexane	110-54-3	0.83		0.080	2.9		0.28
1,1-Dichloroethane	75-34-3	0.040	U	0.040	0.16	U	0.16
1,2-Dichloroethene (total)	540-59-0	0.040	U	0.040	0.16	U	0.16
cis-1,2-Dichloroethene	156-59-2	0.040	U	0.040	0.16	U	0.16
Chloroform	67-66-3	0.040	U	0.040	0.20	U	0.20
1,1,1-Trichloroethane	71-55-6	0.040	U	0.040	0.22	U	0.22
Cyclohexane	110-82-7	0.16		0.040	0.55		0.14
Carbon Tetrachloride	56-23-5	0.090		0.040	0.57		0.25
2,2,4-Trimethylpentane	540-84-1	0.12		0.040	0.56		0.19
Benzene	71-43-2	0.49		0.040	1.6		0.13
1,2-Dichloroethane	107-06-2	0.080	U	0.080	0.32	U	0.32
n-Heptane	142-82-5	0.27		0.040	1.1		0.16
Trichloroethene	79-01-8	0.059		0.040	0.32		0.21
1,2-Dichloropropane	78-87-5	0.080	U	0.080	0.37	U	0.37
Bromodichloromethane	75-27-4	0.040	U	0.040	0.27	U	0.27
cis-1,3-Dichloropropene	10061-01-5	0.040	U	0.040	0.18	U	0.18
Toluene	108-88-3	3.2		0.040	12		0.15
trans-1,3-Dichloropropene	10061-02-6	0.040	U	0.040	0.18	U	0.18
1,1,2-Trichloroethane	79-00-5	0.040	U	0.040	0.22	U	0.22
Tetrachloroethene	127-18-4	0.091		0.040	0.62		0.27

CONTAINS CONFIDENTIAL DATA - NOT INTENDED FOR PUBLIC DISTRIBUTION OR FOIL/FOIA

TO-14/15
Result Summary

CLIENT SAMPLE NO.

BCC-IA-01-032609

Lab Name: TAL Burlington

SDG Number: NY130920

Dilution Factor: 4.00

Sample Matrix: AIR

Lab Sample No.: 790523

Date Analyzed: 4/15/2009

Date Received: 3/28/2009

Target Compound	CAS Number	Results in ppbv	Q	RL in ppbv	Results in ug/m3	Q	RL in ug/m3
Dibromochloromethane	124-48-1	0.040	U	0.040	0.34	U	0.34
1,2-Dibromoethane	106-93-4	0.040	U	0.040	0.31	U	0.31
Ethylbenzene	100-41-4	1.4		0.040	6.1		0.17
Xylene (m,p)	1330-20-7	4.8		0.080	21		0.35
Xylene (o)	95-47-6	1.1		0.040	4.8		0.17
Xylene (total)	1330-20-7	5.8		0.040	25		0.17
Bromoform	75-25-2	0.040	U	0.040	0.41	U	0.41
1,1,2,2-Tetrachloroethane	79-34-5	0.040	U	0.040	0.27	U	0.27
4-Ethyltoluene	622-96-8	1.2		0.040	5.9		0.20
1,3,5-Trimethylbenzene	108-67-8	0.87		0.080	4.3		0.39

CONTAINS CONFIDENTIAL DATA - NOT INTENDED FOR PUBLIC DISTRIBUTION OR FOIL/FOIA

TO-14/15
Result Summary

CLIENT SAMPLE NO.

BCC-AA-01-032609

Lab Name: TAL Burlington

SDG Number: NY130920

Dilution Factor: 4.00

Sample Matrix: AIR

Lab Sample No.: 790525

Date Analyzed: 4/15/2009

Date Received: 3/28/2009

Target Compound	CAS Number	Results in ppbv	Q	RL in ppbv	Results in ug/m3	Q	RL in ug/m3
Dichlorodifluoromethane	75-71-8	0.68		0.040	3.4		0.20
1,2-Dichlorotetrafluoroethane	76-14-2	0.040	U	0.040	0.28	U	0.28
Vinyl Chloride	75-01-4	0.080	U	0.080	0.20	U	0.20
1,3-Butadiene	106-99-0	0.080	U	0.080	0.18	U	0.18
Bromomethane	74-83-9	0.080	U	0.080	0.31	U	0.31
Chloroethane	75-00-3	0.080	U	0.080	0.21	U	0.21
Bromoethene	593-60-2	0.080	U	0.080	0.35	U	0.35
Trichlorofluoromethane	75-69-4	0.29		0.040	1.6		0.22
1,1-Dichloroethene	75-35-4	0.040	U	0.040	0.16	U	0.16
3-Chloropropene	107-05-1	0.080	U	0.080	0.25	U	0.25
Methylene Chloride	75-09-2	0.80	U	0.80	2.8	U	2.8
Methyl tert-Butyl Ether	1634-04-4	0.040	U	0.040	0.14	U	0.14
trans-1,2-Dichloroethene	156-60-5	0.040	U	0.040	0.16	U	0.16
n-Hexane	110-54-3	0.17		0.080	0.60		0.28
1,1-Dichloroethane	75-34-3	0.040	U	0.040	0.16	U	0.16
1,2-Dichloroethene (total)	540-59-0	0.040	U	0.040	0.16	U	0.16
cis-1,2-Dichloroethene	156-59-2	0.040	U	0.040	0.16	U	0.16
Chloroform	67-66-3	0.040	U	0.040	0.20	U	0.20
1,1,1-Trichloroethane	71-55-6	0.040	U	0.040	0.22	U	0.22
Cyclohexane	110-82-7	0.040	U	0.040	0.14	U	0.14
Carbon Tetrachloride	56-23-5	0.099		0.040	0.62		0.25
2,2,4-Trimethylpentane	540-84-1	0.040	U	0.040	0.19	U	0.19
Benzene	71-43-2	0.19		0.040	0.61		0.13
1,2-Dichloroethane	107-06-2	0.080	U	0.080	0.32	U	0.32
n-Heptane	142-82-5	0.099		0.040	0.41		0.16
Trichloroethene	79-01-6	0.040	U	0.040	0.21	U	0.21
1,2-Dichloropropane	78-87-5	0.080	U	0.080	0.37	U	0.37
Bromodichloromethane	75-27-4	0.040	U	0.040	0.27	U	0.27
cis-1,3-Dichloropropene	10061-01-5	0.040	U	0.040	0.18	U	0.18
Toluene	108-88-3	0.22		0.040	0.83		0.15
trans-1,3-Dichloropropene	10061-02-6	0.040	U	0.040	0.18	U	0.18
1,1,2-Trichloroethane	79-00-5	0.040	U	0.040	0.22	U	0.22
Tetrachloroethene	127-18-4	0.13		0.040	0.88		0.27

CONTAINS CONFIDENTIAL DATA - NOT INTENDED FOR PUBLIC DISTRIBUTION OR FOIL/FOIA

TO-14/15
Result Summary

CLIENT SAMPLE NO.

BCC-AA-01-032609

Lab Name: TAL Burlington

SDG Number: NY130920

Dilution Factor: 4.00

Sample Matrix: AIR

Lab Sample No.: 790525

Date Analyzed: 4/15/2009

Date Received: 3/28/2009

Target Compound	CAS Number	Results in ppbv	Q	RL in ppbv	Results in ug/m3	Q	RL in ug/m3
Dibromochloromethane	124-48-1	0.040	U	0.040	0.34	U	0.34
1,2-Dibromoethane	106-93-4	0.040	U	0.040	0.31	U	0.31
Ethylbenzene	100-41-4	0.042		0.040	0.18		0.17
Xylene (m,p)	1330-20-7	0.11		0.080	0.48		0.35
Xylene (o)	95-47-6	0.041		0.040	0.18		0.17
Xylene (total)	1330-20-7	0.14		0.040	0.61		0.17
Bromoform	75-25-2	0.040	U	0.040	0.41	U	0.41
1,1,2,2-Tetrachloroethane	79-34-5	0.040	U	0.040	0.27	U	0.27
4-Ethyltoluene	622-96-8	0.040	U	0.040	0.20	U	0.20
1,3,5-Trimethylbenzene	108-67-8	0.080	U	0.080	0.39	U	0.39

CONTAINS CONFIDENTIAL DATA - NOT INTENDED FOR PUBLIC DISTRIBUTION OR FOIL/FOIA

TO-14/15
Result Summary

CLIENT SAMPLE NO.

BCC-IA-02-032609

Lab Name: TAL Burlington

SDG Number: NY130920

Dilution Factor: 4.00

Sample Matrix: AIR

Lab Sample No.: 790526

Date Analyzed: 4/15/2009

Date Received: 3/28/2009

Target Compound	CAS Number	Results In ppbv	Q	RL In ppbv	Results in ug/m3	Q	RL in ug/m3
Dichlorodifluoromethane	75-71-8	0.63		0.040	3.1		0.20
1,2-Dichlorotetrafluoroethane	76-14-2	0.040	U	0.040	0.28	U	0.28
Vinyl Chloride	75-01-4	0.080	U	0.080	0.20	U	0.20
1,3-Butadiene	106-99-0	0.080	U	0.080	0.18	U	0.18
Bromomethane	74-83-9	0.080	U	0.080	0.31	U	0.31
Chloroethane	75-00-3	0.080	U	0.080	0.21	U	0.21
Bromoethene	593-60-2	0.080	U	0.080	0.35	U	0.35
Trichlorofluoromethane	75-69-4	0.39		0.040	2.2		0.22
1,1-Dichloroethene	75-35-4	0.040	U	0.040	0.16	U	0.16
3-Chloropropene	107-05-1	0.080	U	0.080	0.25	U	0.25
Methylene Chloride	75-09-2	0.80	U	0.80	2.8	U	2.8
Methyl tert-Butyl Ether	1634-04-4	0.040	U	0.040	0.14	U	0.14
trans-1,2-Dichloroethene	156-60-5	0.040	U	0.040	0.16	U	0.16
n-Hexane	110-54-3	1.5		0.080	5.3		0.28
1,1-Dichloroethane	75-34-3	0.040	U	0.040	0.16	U	0.16
1,2-Dichloroethene (total)	540-59-0	0.040	U	0.040	0.16	U	0.16
cis-1,2-Dichloroethene	156-59-2	0.040	U	0.040	0.16	U	0.16
Chloroform	67-66-3	0.040	U	0.040	0.20	U	0.20
1,1,1-Trichloroethane	71-55-6	0.040	U	0.040	0.22	U	0.22
Cyclohexane	110-82-7	0.29		0.040	1.0		0.14
Carbon Tetrachloride	56-23-5	0.086		0.040	0.54		0.25
2,2,4-Trimethylpentane	540-84-1	0.18		0.040	0.84		0.19
Benzene	71-43-2	0.67		0.040	2.1		0.13
1,2-Dichloroethane	107-06-2	0.080	U	0.080	0.32	U	0.32
n-Heptane	142-82-5	0.44		0.040	1.8		0.16
Trichloroethene	79-01-6	0.092		0.040	0.49		0.21
1,2-Dichloropropane	78-87-5	0.080	U	0.080	0.37	U	0.37
Bromodichloromethane	75-27-4	0.040	U	0.040	0.27	U	0.27
cis-1,3-Dichloropropene	10061-01-5	0.040	U	0.040	0.18	U	0.18
Toluene	108-88-3	4.9	E	0.040	18	E	0.15
trans-1,3-Dichloropropene	10061-02-6	0.040	U	0.040	0.18	U	0.18
1,1,2-Trichloroethane	79-00-5	0.040	U	0.040	0.22	U	0.22
Tetrachloroethene	127-18-4	0.085		0.040	0.58		0.27

CONTAINS CONFIDENTIAL DATA - NOT INTENDED FOR PUBLIC DISTRIBUTION OR FOIL/FOIA

TO-14/15
Result Summary

CLIENT SAMPLE NO.

BCC-IA-02-032609

Lab Name: TAL Burlington

SDG Number: NY130920

Dilution Factor: 4.00

Sample Matrix: AIR

Lab Sample No.: 790526

Date Analyzed: 4/15/2009

Date Received: 3/28/2009

Target Compound	CAS Number	Results In ppbv	Q	RL In ppbv	Results In ug/m3	Q	RL In ug/m3
Dibromochloromethane	124-48-1	0.040	U	0.040	0.34	U	0.34
1,2-Dibromoethane	106-93-4	0.040	U	0.040	0.31	U	0.31
Ethylbenzene	100-41-4	1.6		0.040	6.9		0.17
Xylene (m,p)	1330-20-7	5.9		0.080	26		0.35
Xylene (o)	95-47-6	1.5		0.040	6.5		0.17
Xylene (total)	1330-20-7	7.2		0.040	31		0.17
Bromoform	75-25-2	0.040	U	0.040	0.41	U	0.41
1,1,2,2-Tetrachloroethane	79-34-5	0.040	U	0.040	0.27	U	0.27
4-Ethyltoluene	622-96-8	2.1		0.040	10		0.20
1,3,5-Trimethylbenzene	108-67-8	2.0		0.080	9.8		0.39

CONTAINS CONFIDENTIAL DATA - NOT INTENDED FOR PUBLIC DISTRIBUTION OR FOIL/FOIA

TO-14/15
Result Summary

CLIENT SAMPLE NO.

BCC-IA-02-032609DL

Lab Name: TAL Burlington

SDG Number: NY130920

Dilution Factor: 6.25

Sample Matrix: AIR

Lab Sample No.: 790526D1

Date Analyzed: 4/16/2009

Date Received: 3/28/2009

Target Compound	CAS Number	Results in ppbv	Q	RL in ppbv	Results in ug/m3	Q	RL in ug/m3
Dichlorodifluoromethane	75-71-8	0.63	D	0.062	3.1	D	0.31
1,2-Dichlorotetrafluoroethane	76-14-2	0.062	U	0.062	0.43	U	0.43
Vinyl Chloride	75-01-4	0.12	U	0.12	0.31	U	0.31
1,3-Butadiene	106-99-0	0.12	U	0.12	0.27	U	0.27
Bromomethane	74-83-9	0.12	U	0.12	0.47	U	0.47
Chloroethane	75-00-3	0.12	U	0.12	0.32	U	0.32
Bromoethane	593-60-2	0.12	U	0.12	0.52	U	0.52
Trichlorofluoromethane	75-69-4	0.38	D	0.062	2.1	D	0.35
1,1-Dichloroethene	75-35-4	0.062	U	0.062	0.25	U	0.25
3-Chloropropene	107-05-1	0.12	U	0.12	0.38	U	0.38
Methylene Chloride	75-09-2	1.2	U	1.2	4.2	U	4.2
Methyl tert-Butyl Ether	1634-04-4	0.062	U	0.062	0.22	U	0.22
trans-1,2-Dichloroethene	156-60-5	0.062	U	0.062	0.25	U	0.25
n-Hexane	110-54-3	1.4	D	0.12	4.9	D	0.42
1,1-Dichloroethane	75-34-3	0.062	U	0.062	0.25	U	0.25
1,2-Dichloroethene (total)	540-59-0	0.062	U	0.062	0.25	U	0.25
cis-1,2-Dichloroethene	156-59-2	0.062	U	0.062	0.25	U	0.25
Chloroform	67-66-3	0.062	U	0.062	0.30	U	0.30
1,1,1-Trichloroethane	71-55-6	0.062	U	0.062	0.34	U	0.34
Cyclohexane	110-82-7	0.29	D	0.062	1.0	D	0.21
Carbon Tetrachloride	56-23-5	0.090	D	0.062	0.57	D	0.39
2,2,4-Trimethylpentane	540-84-1	0.16	D	0.062	0.75	D	0.29
Benzene	71-43-2	0.59	D	0.062	1.9	D	0.20
1,2-Dichloroethane	107-06-2	0.12	U	0.12	0.49	U	0.49
n-Heptane	142-82-5	0.40	D	0.062	1.6	D	0.25
Trichloroethene	79-01-6	0.092	D	0.062	0.49	D	0.33
1,2-Dichloropropane	78-87-5	0.12	U	0.12	0.55	U	0.55
Bromodichloromethane	75-27-4	0.062	U	0.062	0.42	U	0.42
cis-1,3-Dichloropropene	10061-01-5	0.062	U	0.062	0.28	U	0.28
Toluene	108-88-3	4.0	D	0.062	15	D	0.23
trans-1,3-Dichloropropene	10061-02-6	0.062	U	0.062	0.28	U	0.28
1,1,2-Trichloroethane	79-00-5	0.062	U	0.062	0.34	U	0.34
Tetrachloroethene	127-18-4	0.066	D	0.062	0.45	D	0.42

CONTAINS CONFIDENTIAL DATA - NOT INTENDED FOR PUBLIC DISTRIBUTION OR FOIL/FOIA

TO-14/15
Result Summary

CLIENT SAMPLE NO.

BCC-IA-02-032609DL

Lab Name: TAL Burlington

SDG Number: NY130920

Dilution Factor: 6.25

Sample Matrix: AIR

Lab Sample No.: 790526D1

Date Analyzed: 4/16/2009

Date Received: 3/28/2009

Target Compound	CAS Number	Results in ppbv	Q	RL in ppbv	Results in ug/m3	Q	RL in ug/m3
Dibromochloromethane	124-48-1	0.062	U	0.062	0.53	U	0.53
1,2-Dibromoethane	106-93-4	0.062	U	0.062	0.48	U	0.48
Ethylbenzene	100-41-4	1.4	D	0.062	6.1	D	0.27
Xylene (m,p)	1330-20-7	4.9	D	0.12	21	D	0.52
Xylene (o)	95-47-6	1.3	D	0.062	5.6	D	0.27
Xylene (total)	1330-20-7	6.0	D	0.062	26	D	0.27
Bromoform	75-25-2	0.062	U	0.062	0.64	U	0.64
1,1,2,2-Tetrachloroethane	79-34-5	0.062	U	0.062	0.43	U	0.43
4-Ethyltoluene	622-96-8	1.9	D	0.062	9.3	D	0.30
1,3,5-Trimethylbenzene	108-67-8	1.5	D	0.12	7.4	D	0.59

CONTAINS CONFIDENTIAL DATA - NOT INTENDED FOR PUBLIC DISTRIBUTION OR FOIL/FOIA

TO-14/15
Result Summary

CLIENT SAMPLE NO.

BCC-IA-03-032609

Lab Name: TAL Burlington

SDG Number: NY130920

Dilution Factor: 4.00

Sample Matrix: AIR

Lab Sample No.: 790529

Date Analyzed: 4/15/2009

Date Received: 3/28/2009

Target Compound	CAS Number	Results In ppbv	Q	RL In ppbv	Results In ug/m3	Q	RL In ug/m3
Dichlorodifluoromethane	75-71-8	0.44		0.040	2.2		0.20
1,2-Dichlorotetrafluoroethane	76-14-2	0.040	U	0.040	0.28	U	0.28
Vinyl Chloride	75-01-4	0.080	U	0.080	0.20	U	0.20
1,3-Butadiene	106-99-0	0.080	U	0.080	0.18	U	0.18
Bromomethane	74-83-9	0.080	U	0.080	0.31	U	0.31
Chloroethane	75-00-3	0.080	U	0.080	0.21	U	0.21
Bromoethene	593-60-2	0.080	U	0.080	0.35	U	0.35
Trichlorofluoromethane	75-69-4	0.58		0.040	3.3		0.22
1,1-Dichloroethene	75-35-4	0.040	U	0.040	0.16	U	0.16
3-Chloropropene	107-05-1	0.080	U	0.080	0.25	U	0.25
Methylene Chloride	75-09-2	0.80	U	0.80	2.8	U	2.8
Methyl tert-Butyl Ether	1634-04-4	0.040	U	0.040	0.14	U	0.14
trans-1,2-Dichloroethene	156-60-5	0.040	U	0.040	0.16	U	0.16
n-Hexane	110-54-3	1.4		0.080	4.9		0.28
1,1-Dichloroethane	75-34-3	0.040	U	0.040	0.16	U	0.16
1,2-Dichloroethene (total)	540-59-0	0.040	U	0.040	0.16	U	0.16
cis-1,2-Dichloroethene	156-59-2	0.040	U	0.040	0.16	U	0.16
Chloroform	67-66-3	0.040	U	0.040	0.20	U	0.20
1,1,1-Trichloroethane	71-55-6	0.040	U	0.040	0.22	U	0.22
Cyclohexane	110-82-7	0.26		0.040	0.89		0.14
Carbon Tetrachloride	56-23-5	0.078		0.040	0.49		0.25
2,2,4-Trimethylpentane	540-84-1	0.19		0.040	0.89		0.19
Benzene	71-43-2	0.74		0.040	2.4		0.13
1,2-Dichloroethane	107-06-2	0.080	U	0.080	0.32	U	0.32
n-Heptane	142-82-5	1.4		0.040	5.7		0.16
Trichloroethene	79-01-6	0.088		0.040	0.47		0.21
1,2-Dichloropropane	78-87-5	0.080	U	0.080	0.37	U	0.37
Bromodichloromethane	75-27-4	0.040	U	0.040	0.27	U	0.27
cis-1,3-Dichloropropene	10061-01-5	0.040	U	0.040	0.18	U	0.18
Toluene	108-88-3	4.5	E	0.040	17	E	0.15
trans-1,3-Dichloropropene	10061-02-6	0.040	U	0.040	0.18	U	0.18
1,1,2-Trichloroethane	79-00-5	0.040	U	0.040	0.22	U	0.22
Tetrachloroethene	127-18-4	0.071		0.040	0.48		0.27

CONTAINS CONFIDENTIAL DATA - NOT INTENDED FOR PUBLIC DISTRIBUTION OR FOIL/FOIA

TO-14/15
Result Summary

CLIENT SAMPLE NO.

BCC-IA-03-032609

Lab Name: TAL Burlington

SDG Number: NY130920

Dilution Factor: 4.00

Sample Matrix: AIR

Lab Sample No.: 790529

Date Analyzed: 4/15/2009

Date Received: 3/28/2009

Target Compound	CAS Number	Results in ppbv	Q	RL in ppbv	Results in ug/m3	Q	RL in ug/m3
Dibromochloromethane	124-48-1	0.040	U	0.040	0.34	U	0.34
1,2-Dibromoethane	106-93-4	0.040	U	0.040	0.31	U	0.31
Ethylbenzene	100-41-4	1.3		0.040	5.6		0.17
Xylene (m,p)	1330-20-7	4.8		0.080	21		0.35
Xylene (o)	95-47-6	1.3		0.040	5.6		0.17
Xylene (total)	1330-20-7	6.0		0.040	26		0.17
Bromoform	75-25-2	0.040	U	0.040	0.41	U	0.41
1,1,2,2-Tetrachloroethane	79-34-5	0.040	U	0.040	0.27	U	0.27
4-Ethyltoluene	622-96-8	1.4		0.040	6.9		0.20
1,3,5-Trimethylbenzene	108-67-8	1.2		0.080	5.9		0.39

CONTAINS CONFIDENTIAL DATA - NOT INTENDED FOR PUBLIC DISTRIBUTION OR FOIL/FOIA

TO-14/15
Result Summary

CLIENT SAMPLE NO.

BCC-IA-03-032609DL

Lab Name: TAL Burlington

SDG Number: NY130920

Dilution Factor: 6.25

Sample Matrix: AIR

Lab Sample No.: 790529D1

Date Analyzed: 4/16/2009

Date Received: 3/28/2009

Target Compound	CAS Number	Results in ppbv	Q	RL in ppbv	Results in ug/m3	Q	RL in ug/m3
Dichlorodifluoromethane	75-71-8	0.65	D	0.062	3.2	D	0.31
1,2-Dichlorotetrafluoroethane	76-14-2	0.062	U	0.062	0.43	U	0.43
Vinyl Chloride	75-01-4	0.12	U	0.12	0.31	U	0.31
1,3-Butadiene	106-99-0	0.12	U	0.12	0.27	U	0.27
Bromomethane	74-83-9	0.12	U	0.12	0.47	U	0.47
Chloroethane	75-00-3	0.12	U	0.12	0.32	U	0.32
Bromoethene	593-60-2	0.12	U	0.12	0.52	U	0.52
Trichlorofluoromethane	75-69-4	0.74	D	0.062	4.2	D	0.35
1,1-Dichloroethene	75-35-4	0.062	U	0.062	0.25	U	0.25
3-Chloropropene	107-05-1	0.12	U	0.12	0.38	U	0.38
Methylene Chloride	75-09-2	1.2	U	1.2	4.2	U	4.2
Methyl tert-Butyl Ether	1634-04-4	0.062	U	0.062	0.22	U	0.22
trans-1,2-Dichloroethene	156-60-5	0.062	U	0.062	0.25	U	0.25
n-Hexane	110-54-3	1.7	D	0.12	6.0	D	0.42
1,1-Dichloroethane	75-34-3	0.062	U	0.062	0.25	U	0.25
1,2-Dichloroethene (total)	540-59-0	0.062	U	0.062	0.25	U	0.25
cis-1,2-Dichloroethene	156-59-2	0.062	U	0.062	0.25	U	0.25
Chloroform	67-66-3	0.062	U	0.062	0.30	U	0.30
1,1,1-Trichloroethane	71-55-6	0.062	U	0.062	0.34	U	0.34
Cyclohexane	110-82-7	0.31	D	0.062	1.1	D	0.21
Carbon Tetrachloride	56-23-5	0.098	D	0.062	0.62	D	0.39
2,2,4-Trimethylpentane	540-84-1	0.21	D	0.062	0.98	D	0.29
Benzene	71-43-2	0.84	D	0.062	2.7	D	0.20
1,2-Dichloroethane	107-06-2	0.12	U	0.12	0.49	U	0.49
n-Heptane	142-82-5	1.6	D	0.062	6.6	D	0.25
Trichloroethene	79-01-6	0.11	D	0.062	0.59	D	0.33
1,2-Dichloropropane	78-87-5	0.12	U	0.12	0.55	U	0.55
Bromodichloromethane	75-27-4	0.062	U	0.062	0.42	U	0.42
cis-1,3-Dichloropropene	10061-01-5	0.062	U	0.062	0.28	U	0.28
Toluene	108-88-3	5.6	D	0.062	21	D	0.23
trans-1,3-Dichloropropene	10061-02-6	0.062	U	0.062	0.28	U	0.28
1,1,2-Trichloroethane	79-00-5	0.062	U	0.062	0.34	U	0.34
Tetrachloroethene	127-18-4	0.077	D	0.062	0.52	D	0.42

CONTAINS CONFIDENTIAL DATA - NOT INTENDED FOR PUBLIC DISTRIBUTION OR FOIL/FOIA

TO-14/15
Result Summary

CLIENT SAMPLE NO.

BCC-IA-03-032609DL

Lab Name: TAL Burlington

SDG Number: NY130920

Dilution Factor: 6.25

Sample Matrix: AIR

Lab Sample No.: 790529D1

Date Analyzed: 4/16/2009

Date Received: 3/28/2009

Target Compound	CAS Number	Results In ppbv	Q	RL In ppbv	Results In ug/m3	Q	RL In ug/m3
Dibromochloromethane	124-48-1	0.062	U	0.062	0.53	U	0.53
1,2-Dibromoethane	106-93-4	0.062	U	0.062	0.48	U	0.48
Ethylbenzene	100-41-4	1.6	D	0.062	6.9	D	0.27
Xylene (m,p)	1330-20-7	5.7	D	0.12	25	D	0.52
Xylene (o)	95-47-6	1.5	D	0.062	6.5	D	0.27
Xylene (total)	1330-20-7	7.0	D	0.062	30	D	0.27
Bromoform	75-25-2	0.062	U	0.062	0.64	U	0.64
1,1,2,2-Tetrachloroethane	79-34-5	0.062	U	0.062	0.43	U	0.43
4-Ethyltoluene	622-96-8	1.3	D	0.062	6.4	D	0.30
1,3,5-Trimethylbenzene	108-67-8	1.4	D	0.12	6.9	D	0.59

CONTAINS CONFIDENTIAL DATA - NOT INTENDED FOR PUBLIC DISTRIBUTION OR FOIL/FOIA

TO-14/15
Result Summary

CLIENT SAMPLE NO.

BCC-IA-04-032609

Lab Name: TAL Burlington

SDG Number: NY130920

Dilution Factor: 4.00

Sample Matrix: AIR

Lab Sample No.: 790531

Date Analyzed: 4/15/2009

Date Received: 3/28/2009

Target Compound	CAS Number	Results in ppbv	Q	RL in ppbv	Results in ug/m3	Q	RL in ug/m3
Dichlorodifluoromethane	75-71-8	0.67		0.040	3.3		0.20
1,2-Dichlorotetrafluoroethane	78-14-2	0.040	U	0.040	0.28	U	0.28
Vinyl Chloride	75-01-4	0.080	U	0.080	0.20	U	0.20
1,3-Butadiene	106-99-0	0.080	U	0.080	0.18	U	0.18
Bromomethane	74-83-9	0.080	U	0.080	0.31	U	0.31
Chloroethane	75-00-3	0.080	U	0.080	0.21	U	0.21
Bromoethene	593-60-2	0.080	U	0.080	0.35	U	0.35
Trichlorofluoromethane	75-69-4	0.37		0.040	2.1		0.22
1,1-Dichloroethene	75-35-4	0.040	U	0.040	0.16	U	0.16
3-Chloropropene	107-05-1	0.080	U	0.080	0.25	U	0.25
Methylene Chloride	75-09-2	0.80	U	0.80	2.8	U	2.8
Methyl tert-Butyl Ether	1634-04-4	0.040	U	0.040	0.14	U	0.14
trans-1,2-Dichloroethene	156-60-5	0.040	U	0.040	0.16	U	0.16
n-Hexane	110-54-3	1.3		0.080	4.6		0.28
1,1-Dichloroethane	75-34-3	0.040	U	0.040	0.16	U	0.16
1,2-Dichloroethene (total)	540-59-0	0.040	U	0.040	0.16	U	0.16
cis-1,2-Dichloroethene	156-59-2	0.040	U	0.040	0.16	U	0.16
Chloroform	67-66-3	0.040	U	0.040	0.20	U	0.20
1,1,1-Trichloroethane	71-55-6	0.040	U	0.040	0.22	U	0.22
Cyclohexane	110-82-7	0.24		0.040	0.83		0.14
Carbon Tetrachloride	56-23-5	0.092		0.040	0.58		0.25
2,2,4-Trimethylpentane	540-84-1	0.15		0.040	0.70		0.19
Benzene	71-43-2	0.58		0.040	1.9		0.13
1,2-Dichloroethane	107-06-2	0.080	U	0.080	0.32	U	0.32
n-Heptane	142-82-5	0.40		0.040	1.6		0.16
Trichloroethene	79-01-6	0.092		0.040	0.49		0.21
1,2-Dichloropropane	78-87-5	0.080	U	0.080	0.37	U	0.37
Bromodichloromethane	75-27-4	0.040	U	0.040	0.27	U	0.27
cis-1,3-Dichloropropene	10061-01-5	0.040	U	0.040	0.18	U	0.18
Toluene	108-88-3	4.3	E	0.040	16	E	0.15
trans-1,3-Dichloropropene	10061-02-6	0.040	U	0.040	0.18	U	0.18
1,1,2-Trichloroethane	79-00-5	0.040	U	0.040	0.22	U	0.22
Tetrachloroethene	127-18-4	0.089		0.040	0.60		0.27

CONTAINS CONFIDENTIAL DATA - NOT INTENDED FOR PUBLIC DISTRIBUTION OR FOIL/FOIA

TD-14/15
Result Summary

CLIENT SAMPLE NO.

BCC-IA-04-032609

Lab Name: TAL Burlington

SDG Number: NY130920

Dilution Factor: 4.00

Sample Matrix: AIR

Lab Sample No.: 790531

Date Analyzed: 4/15/2009

Date Received: 3/28/2009

Target Compound	CAS Number	Results in ppbv	Q	RL in ppbv	Results in ug/m3	Q	RL in ug/m3
Dibromochloromethane	124-48-1	0.040	U	0.040	0.34	U	0.34
1,2-Dibromoethane	106-93-4	0.040	U	0.040	0.31	U	0.31
Ethylbenzene	100-41-4	1.3		0.040	5.6		0.17
Xylene (m,p)	1330-20-7	4.8		0.080	21		0.35
Xylene (o)	95-47-6	1.2		0.040	5.2		0.17
Xylene (total)	1330-20-7	5.9		0.040	26		0.17
Bromoform	75-25-2	0.040	U	0.040	0.41	U	0.41
1,1,2,2-Tetrachloroethane	79-34-5	0.040	U	0.040	0.27	U	0.27
4-Ethyltoluene	622-96-8	1.6		0.040	7.9		0.20
1,3,5-Trimethylbenzene	108-67-8	1.5		0.080	7.4		0.39

CONTAINS CONFIDENTIAL DATA - NOT INTENDED FOR PUBLIC DISTRIBUTION OR FOIL/FOIA

TO-14/15
Result Summary

CLIENT SAMPLE NO.

BCC-IA-04-032609DL

Lab Name: TAL Burlington

SDG Number: NY130920

Dilution Factor: 6.25

Sample Matrix: AIR

Lab Sample No.: 790531D1

Date Analyzed: 4/16/2009

Date Received: 3/28/2009

Target Compound	CAS Number	Results in ppbv	Q	RL in ppbv	Results in ug/m3	Q	RL in ug/m3
Dichlorodifluoromethane	75-71-8	0.68	D	0.062	3.4	D	0.31
1,2-Dichlorotetrafluoroethane	76-14-2	0.062	U	0.062	0.43	U	0.43
Vinyl Chloride	75-01-4	0.12	U	0.12	0.31	U	0.31
1,3-Butadiene	106-99-0	0.12	U	0.12	0.27	U	0.27
Bromomethane	74-83-9	0.12	U	0.12	0.47	U	0.47
Chloroethane	75-00-3	0.12	U	0.12	0.32	U	0.32
Bromoethene	593-60-2	0.12	U	0.12	0.52	U	0.52
Trichlorofluoromethane	75-69-4	0.39	D	0.062	2.2	D	0.35
1,1-Dichloroethene	75-35-4	0.062	U	0.062	0.25	U	0.25
3-Chloropropene	107-05-1	0.12	U	0.12	0.38	U	0.38
Methylene Chloride	75-09-2	1.2	U	1.2	4.2	U	4.2
Methyl tert-Butyl Ether	1634-04-4	0.062	U	0.062	0.22	U	0.22
trans-1,2-Dichloroethene	156-60-5	0.062	U	0.062	0.25	U	0.25
n-Hexane	110-54-3	1.3	D	0.12	4.6	D	0.42
1,1-Dichloroethane	75-34-3	0.062	U	0.062	0.25	U	0.25
1,2-Dichloroethene (total)	540-59-0	0.062	U	0.062	0.25	U	0.25
cis-1,2-Dichloroethene	156-59-2	0.062	U	0.062	0.25	U	0.25
Chloroform	67-66-3	0.062	U	0.062	0.30	U	0.30
1,1,1-Trichloroethane	71-55-6	0.062	U	0.062	0.34	U	0.34
Cyclohexane	110-82-7	0.24	D	0.062	0.83	D	0.21
Carbon Tetrachloride	56-23-5	0.084	D	0.062	0.53	D	0.39
2,2,4-Trimethylpentane	540-84-1	0.16	D	0.062	0.75	D	0.29
Benzene	71-43-2	0.58	D	0.062	1.9	D	0.20
1,2-Dichloroethane	107-06-2	0.12	U	0.12	0.49	U	0.49
n-Heptane	142-82-5	0.39	D	0.062	1.6	D	0.25
Trichloroethene	79-01-6	0.088	D	0.062	0.47	D	0.33
1,2-Dichloropropane	78-87-5	0.12	U	0.12	0.55	U	0.55
Bromodichloromethane	75-27-4	0.062	U	0.062	0.42	U	0.42
cis-1,3-Dichloropropene	10061-01-5	0.062	U	0.062	0.28	U	0.28
Toluene	108-88-3	4.2	D	0.062	16	D	0.23
trans-1,3-Dichloropropene	10061-02-6	0.062	U	0.062	0.28	U	0.28
1,1,2-Trichloroethane	79-00-5	0.062	U	0.062	0.34	U	0.34
Tetrachloroethene	127-18-4	0.097	D	0.062	0.66	D	0.42

CONTAINS CONFIDENTIAL DATA - NOT INTENDED FOR PUBLIC DISTRIBUTION OR FOIL/FOIA

TO-14/15
Result Summary

CLIENT SAMPLE NO.

BCC-IA-04-032609DL

Lab Name: TAL Burlington

SDG Number: NY130920

Dilution Factor: 6.25

Sample Matrix: AIR

Lab Sample No.: 790531D1

Date Analyzed: 4/16/2009

Date Received: 3/28/2009

Target Compound	CAS Number	Results In ppbv	Q	RL In ppbv	Results In ug/m3	Q	RL In ug/m3
Dibromochloromethane	124-48-1	0.062	U	0.062	0.53	U	0.53
1,2-Dibromoethane	106-93-4	0.062	U	0.062	0.48	U	0.48
Ethylbenzene	100-41-4	1.3	D	0.062	5.6	D	0.27
Xylene (m,p)	1330-20-7	4.7	D	0.12	20	D	0.52
Xylene (o)	95-47-6	1.3	D	0.062	5.6	D	0.27
Xylene (total)	1330-20-7	5.8	D	0.062	25	D	0.27
Bromoform	75-25-2	0.062	U	0.062	0.64	U	0.64
1,1,2,2-Tetrachloroethane	79-34-5	0.062	U	0.062	0.43	U	0.43
4-Ethyltoluene	622-96-8	1.8	D	0.062	8.8	D	0.30
1,3,5-Trimethylbenzene	108-67-8	1.5	D	0.12	7.4	D	0.59

CONTAINS CONFIDENTIAL DATA - NOT INTENDED FOR PUBLIC DISTRIBUTION OR FOIL/FOIA

TO-14/15
Result Summary

CLIENT SAMPLE NO.

BCC-SS-01-032609

Lab Name: TAL Burlington

SDG Number: NY130920

Dilution Factor: 0.80

Sample Matrix: AIR

Lab Sample No.: 790524

Date Analyzed: 4/2/2009

Date Received: 3/28/2009

Target Compound	CAS Number	Results in ppbv	Q	RL in ppbv	Results in ug/m3	Q	RL in ug/m3
Dichlorodifluoromethane	75-71-8	0.40	U	0.40	2.0	U	2.0
1,2-Dichlorotetrafluoroethane	76-14-2	0.16	U	0.16	1.1	U	1.1
Vinyl Chloride	75-01-4	0.16	U	0.16	0.41	U	0.41
1,3-Butadiene	106-99-0	0.40	U	0.40	0.88	U	0.88
Bromomethane	74-83-9	0.16	U	0.16	0.62	U	0.62
Chloroethane	75-00-3	0.40	U	0.40	1.1	U	1.1
Bromoethene	593-60-2	0.16	U	0.16	0.70	U	0.70
Trichlorofluoromethane	75-69-4	0.59		0.16	3.3		0.90
1,1-Dichloroethene	75-35-4	0.16	U	0.16	0.63	U	0.63
3-Chloropropene	107-05-1	0.40	U	0.40	1.3	U	1.3
Methylene Chloride	75-09-2	0.40	U	0.40	1.4	U	1.4
Methyl tert-Butyl Ether	1634-04-4	0.40	U	0.40	1.4	U	1.4
trans-1,2-Dichloroethene	156-60-5	0.16	U	0.16	0.63	U	0.63
n-Hexane	110-54-3	0.52		0.40	1.8		1.4
1,1-Dichloroethane	75-34-3	0.16	U	0.16	0.65	U	0.65
cis-1,2-Dichloroethene	156-59-2	0.16	U	0.16	0.63	U	0.63
Chloroform	67-66-3	0.16	U	0.16	0.78	U	0.78
1,1,1-Trichloroethane	71-55-6	0.16	U	0.16	0.87	U	0.87
Cyclohexane	110-82-7	0.21		0.16	0.72		0.55
Carbon Tetrachloride	56-23-5	0.16	U	0.16	1.0	U	1.0
2,2,4-Trimethylpentane	540-84-1	0.16	U	0.16	0.75	U	0.75
Benzene	71-43-2	0.37		0.16	1.2		0.51
1,2-Dichloroethene (total)	540-59-0	0.16	U	0.16	0.63	U	0.63
1,2-Dichloroethane	107-06-2	0.16	U	0.16	0.65	U	0.65
n-Heptane	142-82-5	0.47		0.16	1.9		0.66
Trichloroethene	79-01-6	0.16	U	0.16	0.86	U	0.86
1,2-Dichloropropane	78-87-5	0.16	U	0.16	0.74	U	0.74
Bromodichloromethane	75-27-4	0.16	U	0.16	1.1	U	1.1
cis-1,3-Dichloropropene	10061-01-5	0.16	U	0.16	0.73	U	0.73
Toluene	108-88-3	1.2		0.16	4.5		0.60
trans-1,3-Dichloropropene	10061-02-6	0.16	U	0.16	0.73	U	0.73
1,1,2-Trichloroethane	79-00-5	0.16	U	0.16	0.87	U	0.87
Tetrachloroethene	127-18-4	0.16	U	0.16	1.1	U	1.1

CONTAINS CONFIDENTIAL DATA - NOT INTENDED FOR PUBLIC DISTRIBUTION OR FOIL/FOIA

TO-14/15
Result Summary

CLIENT SAMPLE NO.

BCC-SS-01-032809

Lab Name: TAL Burlington

SDG Number: NY130920

Dilution Factor: 0.80

Sample Matrix: AIR

Lab Sample No.: 790524

Date Analyzed: 4/2/2009

Date Received: 3/28/2009

Target Compound	CAS Number	Results in ppbv	Q	RL in ppbv	Results in ug/m3	Q	RL in ug/m3
Dibromochloromethane	124-48-1	0.16	U	0.16	1.4	U	1.4
1,2-Dibromoethane	106-93-4	0.16	U	0.16	1.2	U	1.2
Ethylbenzene	100-41-4	0.22		0.16	0.96		0.69
Xylene (m,p)	1330-20-7	0.96		0.40	4.2		1.7
Xylene (o)	95-47-6	0.39		0.16	1.7		0.69
Bromoform	75-25-2	0.16	U	0.16	1.7	U	1.7
1,1,2,2-Tetrachloroethane	79-34-5	0.16	U	0.16	1.1	U	1.1
Xylene (total)	1330-20-7	1.4		0.16	6.1		0.69
4-Ethyltoluene	622-96-8	0.22		0.16	1.1		0.79
1,3,5-Trimethylbenzene	108-67-8	0.19		0.16	0.93		0.79

CONTAINS CONFIDENTIAL DATA - NOT INTENDED FOR PUBLIC DISTRIBUTION OR FOIL/FOIA

TO-14/15
Result Summary

CLIENT SAMPLE NO.

BCC-SS-02-032609

Lab Name: TAL Burlington

SDG Number: NY130920

Dilution Factor: 0.80

Sample Matrix: AIR

Lab Sample No.: 790527

Date Analyzed: 4/2/2009

Date Received: 3/28/2009

Target Compound	CAS Number	Results in ppbv	Q	RL in ppbv	Results in ug/m3	Q	RL in ug/m3
Dichlorodifluoromethane	75-71-8	0.40	U	0.40	2.0	U	2.0
1,2-Dichlorotetrafluoroethane	76-14-2	0.16	U	0.16	1.1	U	1.1
Vinyl Chloride	75-01-4	0.16	U	0.16	0.41	U	0.41
1,3-Butadiene	106-99-0	0.40	U	0.40	0.88	U	0.88
Bromomethane	74-83-9	0.16	U	0.16	0.62	U	0.62
Chloroethane	75-00-3	0.40	U	0.40	1.1	U	1.1
Bromoethene	593-60-2	0.16	U	0.16	0.70	U	0.70
Trichlorofluoromethane	75-69-4	1.2		0.16	6.7		0.90
1,1-Dichloroethene	75-35-4	0.16	U	0.16	0.63	U	0.63
3-Chloropropene	107-05-1	0.40	U	0.40	1.3	U	1.3
Methylene Chloride	75-09-2	0.40	U	0.40	1.4	U	1.4
Methyl tert-Butyl Ether	1634-04-4	0.40	U	0.40	1.4	U	1.4
trans-1,2-Dichloroethene	156-60-5	0.16	U	0.16	0.63	U	0.63
n-Hexane	110-54-3	1.3		0.40	4.6		1.4
1,1-Dichloroethane	75-34-3	0.16	U	0.16	0.65	U	0.65
cis-1,2-Dichloroethene	156-59-2	0.16	U	0.16	0.63	U	0.63
Chloroform	67-66-3	0.16	U	0.16	0.78	U	0.78
1,1,1-Trichloroethane	71-55-6	0.27		0.16	1.5		0.87
Cyclohexane	110-82-7	1.3		0.16	4.5		0.55
Carbon Tetrachloride	56-23-5	0.16	U	0.16	1.0	U	1.0
2,2,4-Trimethylpentane	540-84-1	0.16	U	0.16	0.75	U	0.75
Benzene	71-43-2	0.32		0.16	1.0		0.51
1,2-Dichloroethene (total)	540-59-0	0.16	U	0.16	0.63	U	0.63
1,2-Dichloroethane	107-06-2	0.16	U	0.16	0.65	U	0.65
n-Heptane	142-82-5	1.0		0.16	4.1		0.66
Trichloroethene	79-01-6	0.16	U	0.16	0.86	U	0.86
1,2-Dichloropropane	78-87-5	0.16	U	0.16	0.74	U	0.74
Bromodichloromethane	75-27-4	0.16	U	0.16	1.1	U	1.1
cis-1,3-Dichloropropene	10061-01-5	0.16	U	0.16	0.73	U	0.73
Toluene	108-88-3	1.0		0.16	3.8		0.60
trans-1,3-Dichloropropene	10061-02-6	0.16	U	0.16	0.73	U	0.73
1,1,2-Trichloroethane	79-00-5	0.16	U	0.16	0.87	U	0.87
Tetrachloroethene	127-18-4	0.16	U	0.16	1.1	U	1.1

CONTAINS CONFIDENTIAL DATA - NOT INTENDED FOR PUBLIC DISTRIBUTION OR FOIL/FOIA

TO-14/15
Result Summary

CLIENT SAMPLE NO.

BCC-SS-02-032609

Lab Name: TAL Burlington

SDG Number: NY130920

Dilution Factor: 0.80

Sample Matrix: AIR

Lab Sample No.: 790527

Date Analyzed: 4/2/2009

Date Received: 3/28/2009

Target Compound	CAS Number	Results In ppbv	Q	RL In ppbv	Results In ug/m3	Q	RL In ug/m3
Dibromochloromethane	124-48-1	0.16	U	0.16	1.4	U	1.4
1,2-Dibromoethane	106-93-4	0.16	U	0.16	1.2	U	1.2
Ethylbenzene	100-41-4	0.30		0.16	1.3		0.69
Xylene (m,p)	1330-20-7	1.3		0.40	5.6		1.7
Xylene (o)	95-47-6	0.48		0.16	2.1		0.69
Bromoform	75-25-2	0.16	U	0.16	1.7	U	1.7
1,1,2,2-Tetrachloroethane	79-34-5	0.16	U	0.16	1.1	U	1.1
Xylene (total)	1330-20-7	1.9		0.16	8.3		0.69
4-Ethyltoluene	622-96-8	0.42		0.16	2.1		0.79
1,3,5-Trimethylbenzene	108-67-8	0.30		0.16	1.5		0.79

CONTAINS CONFIDENTIAL DATA - NOT INTENDED FOR PUBLIC DISTRIBUTION OR FOIL/FOIA

TO-14/15
Result Summary

CLIENT SAMPLE NO.

BCC-SS-02D-032609

Lab Name: TAL Burlington

SDG Number: NY130920

Dilution Factor: 0.80

Sample Matrix: AIR

Lab Sample No.: 790528

Date Analyzed: 4/2/2009

Date Received: 3/28/2009

Target Compound	CAS Number	Results in ppbv	Q	RL in ppbv	Results in ug/m3	Q	RL in ug/m3
Dichlorodifluoromethane	75-71-8	0.40	U	0.40	2.0	U	2.0
1,2-Dichlorotetrafluoroethane	76-14-2	0.16	U	0.16	1.1	U	1.1
Vinyl Chloride	75-01-4	0.16	U	0.16	0.41	U	0.41
1,3-Butadiene	106-99-0	0.40	U	0.40	0.88	U	0.88
Bromomethane	74-83-9	0.16	U	0.16	0.62	U	0.62
Chloroethane	75-00-3	0.40	U	0.40	1.1	U	1.1
Bromoethene	593-60-2	0.16	U	0.16	0.70	U	0.70
Trichlorofluoromethane	75-69-4	1.1		0.16	6.2		0.90
1,1-Dichloroethene	75-35-4	0.16	U	0.16	0.63	U	0.63
3-Chloropropene	107-05-1	0.40	U	0.40	1.3	U	1.3
Methylene Chloride	75-09-2	0.40	U	0.40	1.4	U	1.4
Methyl tert-Butyl Ether	1634-04-4	0.40	U	0.40	1.4	U	1.4
trans-1,2-Dichloroethene	156-60-5	0.16	U	0.16	0.63	U	0.63
n-Hexane	110-54-3	1.3		0.40	4.6		1.4
1,1-Dichloroethane	75-34-3	0.16	U	0.16	0.65	U	0.65
cis-1,2-Dichloroethene	156-59-2	0.16	U	0.16	0.63	U	0.63
Chloroform	67-66-3	0.16	U	0.16	0.78	U	0.78
1,1,1-Trichloroethane	71-55-6	0.26		0.16	1.4		0.87
Cyclohexane	110-82-7	1.3		0.16	4.5		0.55
Carbon Tetrachloride	56-23-5	0.16	U	0.16	1.0	U	1.0
2,2,4-Trimethylpentane	540-84-1	0.25		0.16	1.2		0.75
Benzene	71-43-2	0.31		0.16	0.99		0.51
1,2-Dichloroethene (total)	540-59-0	0.16	U	0.16	0.63	U	0.63
1,2-Dichloroethane	107-06-2	0.16	U	0.16	0.65	U	0.65
n-Heptane	142-82-5	0.95		0.16	3.9		0.66
Trichloroethene	79-01-6	0.16	U	0.16	0.86	U	0.86
1,2-Dichloropropane	78-87-5	0.16	U	0.16	0.74	U	0.74
Bromodichloromethane	75-27-4	0.16	U	0.16	1.1	U	1.1
cis-1,3-Dichloropropene	10061-01-5	0.16	U	0.16	0.73	U	0.73
Toluene	108-88-3	1.1		0.16	4.1		0.60
trans-1,3-Dichloropropene	10061-02-6	0.16	U	0.16	0.73	U	0.73
1,1,2-Trichloroethane	79-00-5	0.16	U	0.16	0.87	U	0.87
Tetrachloroethene	127-18-4	0.16	U	0.16	1.1	U	1.1

CONTAINS CONFIDENTIAL DATA - NOT INTENDED FOR PUBLIC DISTRIBUTION OR FOIL/FOIA

TO-14/15
Result Summary

CLIENT SAMPLE NO.

BCC-SS-02D-032609

Lab Name: TAL Burlington

SDG Number: NY130920

Dilution Factor: 0.80

Sample Matrix: AIR

Lab Sample No.: 790528

Date Analyzed: 4/2/2009

Date Received: 3/28/2009

Target Compound	CAS Number	Results in ppbv	Q	RL in ppbv	Results in ug/m3	Q	RL in ug/m3
Dibromochloromethane	124-48-1	0.16	U	0.16	1.4	U	1.4
1,2-Dibromoethane	106-93-4	0.16	U	0.16	1.2	U	1.2
Ethylbenzene	100-41-4	0.62		0.16	2.7		0.69
Xylene (m,p)	1330-20-7	1.9		0.40	8.3		1.7
Xylene (o)	95-47-6	0.54		0.16	2.3		0.69
Bromoform	75-25-2	0.16	U	0.16	1.7	U	1.7
1,1,2,2-Tetrachloroethane	79-34-5	0.16	U	0.16	1.1	U	1.1
Xylene (total)	1330-20-7	2.5		0.16	11		0.69
4-Ethyltoluene	622-96-8	0.21		0.16	1.0		0.79
1,3,5-Trimethylbenzene	108-87-8	0.16	U	0.16	0.79	U	0.79

CONTAINS CONFIDENTIAL DATA - NOT INTENDED FOR PUBLIC DISTRIBUTION OR FOIL/FOIA

TO-14/15
Result Summary

CLIENT SAMPLE NO.

BCC-SS-03-032609

Lab Name: TAL Burlington

SDG Number: NY130920

Dilution Factor: 0.80

Sample Matrix: AIR

Lab Sample No.: 790530

Date Analyzed: 4/2/2009

Date Received: 3/28/2009

Target Compound	CAS Number	Results in ppbv	Q	RL In ppbv	Results in ug/m3	Q	RL In ug/m3
Dichlorodifluoromethane	75-71-8	0.40	U	0.40	2.0	U	2.0
1,2-Dichlorotetrafluoroethane	76-14-2	0.16	U	0.16	1.1	U	1.1
Vinyl Chloride	75-01-4	0.16	U	0.16	0.41	U	0.41
1,3-Butadiene	106-99-0	0.40	U	0.40	0.88	U	0.88
Bromomethane	74-83-9	0.16	U	0.16	0.62	U	0.62
Chloroethane	75-00-3	0.40	U	0.40	1.1	U	1.1
Bromoethene	593-60-2	0.16	U	0.16	0.70	U	0.70
Trichlorofluoromethane	75-69-4	0.48		0.16	2.7		0.90
1,1-Dichloroethene	75-35-4	0.16	U	0.16	0.63	U	0.63
3-Chloropropene	107-05-1	0.40	U	0.40	1.3	U	1.3
Methylene Chloride	75-09-2	0.40	U	0.40	1.4	U	1.4
Methyl tert-Butyl Ether	1634-04-4	0.40	U	0.40	1.4	U	1.4
trans-1,2-Dichloroethene	156-60-5	0.16	U	0.16	0.63	U	0.63
n-Hexane	110-54-3	1.3		0.40	4.6		1.4
1,1-Dichloroethane	75-34-3	0.16	U	0.16	0.65	U	0.65
cis-1,2-Dichloroethene	156-59-2	0.16	U	0.16	0.63	U	0.63
Chloroform	67-66-3	0.16	U	0.16	0.78	U	0.78
1,1,1-Trichloroethane	71-55-6	0.74		0.16	4.0		0.87
Cyclohexane	110-82-7	0.51		0.16	1.8		0.55
Carbon Tetrachloride	56-23-5	0.16	U	0.16	1.0	U	1.0
2,2,4-Trimethylpentane	540-84-1	0.16	U	0.16	0.75	U	0.75
Benzene	71-43-2	0.33		0.16	1.1		0.51
1,2-Dichloroethene (total)	540-59-0	0.16	U	0.16	0.63	U	0.63
1,2-Dichloroethane	107-06-2	0.16	U	0.16	0.65	U	0.65
n-Heptane	142-82-5	1.0		0.16	4.1		0.66
Trichloroethene	79-01-6	0.16	U	0.16	0.86	U	0.86
1,2-Dichloropropane	78-87-5	0.16	U	0.16	0.74	U	0.74
Bromodichloromethane	75-27-4	0.16	U	0.16	1.1	U	1.1
cis-1,3-Dichloropropene	10061-01-5	0.16	U	0.16	0.73	U	0.73
Toluene	108-88-3	0.87		0.16	3.3		0.60
trans-1,3-Dichloropropene	10061-02-6	0.16	U	0.16	0.73	U	0.73
1,1,2-Trichloroethane	79-00-5	0.16	U	0.16	0.87	U	0.87
Tetrachloroethene	127-18-4	0.17		0.16	1.2		1.1

CONTAINS CONFIDENTIAL DATA - NOT INTENDED FOR PUBLIC DISTRIBUTION OR FOIL/FOIA

TO-14/15
Result Summary

CLIENT SAMPLE NO.

BCC-SS-03-032609

Lab Name: TAL Burlington

SDG Number: NY130920

Dilution Factor: 0.80

Sample Matrix: AIR

Lab Sample No.: 790530

Date Analyzed: 4/2/2009

Date Received: 3/28/2009

Target Compound	CAS Number	Results in ppbv	Q	RL in ppbv	Results in ug/m3	Q	RL in ug/m3
Dibromochloromethane	124-48-1	0.16	U	0.16	1.4	U	1.4
1,2-Dibromoethane	106-93-4	0.16	U	0.16	1.2	U	1.2
Ethylbenzene	100-41-4	0.17		0.16	0.74		0.69
Xylene (m,p)	1330-20-7	1.2		0.40	5.2		1.7
Xylene (o)	95-47-6	0.37		0.16	1.6		0.69
Bromoform	75-25-2	0.16	U	0.16	1.7	U	1.7
1,1,2,2-Tetrachloroethane	79-34-5	0.16	U	0.16	1.1	U	1.1
Xylene (total)	1330-20-7	1.6		0.16	6.9		0.69
4-Ethyltoluene	622-96-8	0.32		0.16	1.6		0.79
1,3,5-Trimethylbenzene	108-67-8	0.25		0.16	1.2		0.79

CONTAINS CONFIDENTIAL DATA - NOT INTENDED FOR PUBLIC DISTRIBUTION OR FOIL/FOIA

TO-14/15
Result Summary

CLIENT SAMPLE NO.

BCC-SS-04-032609

Lab Name: TAL Burlington

SDG Number: NY130920

Dilution Factor: 0.80

Sample Matrix: AIR

Lab Sample No.: 790532

Date Analyzed: 4/2/2009

Date Received: 3/28/2009

Target Compound	CAS Number	Results in ppbv	Q	RL in ppbv	Results in ug/m3	Q	RL in ug/m3
Dichlorodifluoromethane	75-71-8	0.40	U	0.40	2.0	U	2.0
1,2-Dichlorotetrafluoroethane	76-14-2	0.16	U	0.16	1.1	U	1.1
Vinyl Chloride	75-01-4	0.16	U	0.16	0.41	U	0.41
1,3-Butadiene	106-99-0	0.40	U	0.40	0.88	U	0.88
Bromomethane	74-83-9	0.16	U	0.16	0.62	U	0.62
Chloroethane	75-00-3	0.40	U	0.40	1.1	U	1.1
Bromoethene	593-60-2	0.16	U	0.16	0.70	U	0.70
Trichlorofluoromethane	75-69-4	0.32		0.16	1.8		0.90
1,1-Dichloroethene	75-35-4	0.16	U	0.16	0.63	U	0.63
3-Chloropropene	107-05-1	0.40	U	0.40	1.3	U	1.3
Methylene Chloride	75-09-2	0.40	U	0.40	1.4	U	1.4
Methyl tert-Butyl Ether	1634-04-4	0.40	U	0.40	1.4	U	1.4
trans-1,2-Dichloroethene	156-60-5	0.16	U	0.16	0.63	U	0.63
n-Hexane	110-54-3	0.40	U	0.40	1.4	U	1.4
1,1-Dichloroethane	75-34-3	0.16	U	0.16	0.65	U	0.65
cis-1,2-Dichloroethene	156-59-2	0.16	U	0.16	0.63	U	0.63
Chloroform	67-66-3	0.16	U	0.16	0.78	U	0.78
1,1,1-Trichloroethane	71-55-6	0.16	U	0.16	0.87	U	0.87
Cyclohexane	110-82-7	0.16	U	0.16	0.55	U	0.55
Carbon Tetrachloride	56-23-5	0.16	U	0.16	1.0	U	1.0
2,2,4-Trimethylpentane	540-84-1	0.16	U	0.16	0.75	U	0.75
Benzene	71-43-2	0.27		0.16	0.86		0.51
1,2-Dichloroethene (total)	540-59-0	0.16	U	0.16	0.63	U	0.63
1,2-Dichloroethane	107-06-2	0.16	U	0.16	0.65	U	0.65
n-Heptane	142-82-5	0.33		0.16	1.4		0.66
Trichloroethene	79-01-6	0.16	U	0.16	0.86	U	0.86
1,2-Dichloropropane	78-87-5	0.16	U	0.16	0.74	U	0.74
Bromodichloromethane	75-27-4	0.16	U	0.16	1.1	U	1.1
cis-1,3-Dichloropropene	10061-01-5	0.16	U	0.16	0.73	U	0.73
Toluene	108-88-3	1.7		0.16	6.4		0.60
trans-1,3-Dichloropropene	10061-02-6	0.16	U	0.16	0.73	U	0.73
1,1,2-Trichloroethane	79-00-5	0.16	U	0.16	0.87	U	0.87
Tetrachloroethene	127-18-4	1.8		0.16	12		1.1

CONTAINS CONFIDENTIAL DATA - NOT INTENDED FOR PUBLIC DISTRIBUTION OR FOIL/FOIA

1330-20-7
**TO-14/15
 Result Summary**

CLIENT SAMPLE NO.

BCC-SS-04-032609

Lab Name: TAL Burlington

SDG Number: NY130920

Dilution Factor: 0.80

Sample Matrix: AIR

Lab Sample No.: 790532

Date Analyzed: 4/2/2009

Date Received: 3/28/2009

Target Compound	CAS Number	Results in ppbv	Q	RL In ppbv	Results in ug/m3	Q	RL In ug/m3
Dibromochloromethane	124-48-1	0.16	U	0.16	1.4	U	1.4
1,2-Dibromoethane	106-93-4	0.16	U	0.16	1.2	U	1.2
Ethylbenzene	100-41-4	0.21		0.16	0.91		0.69
Xylene (m,p)	1330-20-7	1.2		0.40	5.2		1.7
Xylene (o)	95-47-6	0.43		0.16	1.9		0.69
Bromoform	75-25-2	0.16	U	0.16	1.7	U	1.7
1,1,2,2-Tetrachloroethane	79-34-5	0.16	U	0.16	1.1	U	1.1
Xylene (total)	1330-20-7	1.7		0.16	7.4		0.69
4-Ethyltoluene	622-96-8	0.28		0.16	1.4		0.79
1,3,5-Trimethylbenzene	108-67-8	0.17		0.16	0.84		0.79

CONTAINS CONFIDENTIAL DATA - NOT INTENDED FOR PUBLIC DISTRIBUTION OR FOIL/FOIA