

DAILY OBSERVATION REPORT

NYSDEC **9/15/2023**
Remedial Bureau C
Division of Environmental Remediation

Site: Corning MGP
Phase: Site Characterization/Remedial Investigation
Site No.: 851035

Contractor PM:
NYSDEC PM: John Miller
Construction Manager:
Project Engineers:
Remedial Contractor: Arcadis
Air Monitoring: Arcadis
Health & Safety:

Weather Conditions

General Description	Sunny	am	Sunny	pm
Temperature	49°F	am	67°F	pm
Wind Direction	N/A	am	Moderate/Varied	pm

HEALTH & SAFETY:

*(*If any box(s) below are checked "Yes", list the deviation under the "Items for Concern" section of this report).*

Were there any changes to the Health & Safety Plan?		*Yes ()	No (x)	NA ()
Were there any exceedances at the perimeter action level reported on this date?	Air:	*Yes ()	No (x)	NA ()
Were there any Noise /Vibration exceedances reported on this date?	Noise:	*Yes ()	No ()	NA (x)
	Vibration:	*Yes ()	No (x)	NA ()
Were there any breaches to the tent structure or silt fence reported/observed on this date?		*Yes ()	No (x)	NA ()
Were there any dust/odor issues reported or observed on this date?		*Yes ()	No (x)	NA ()

WASTE HAULING :

*(*If any box(s) below are checked "Yes", list the deviation under the "Items of Concern" section of this report).*

Were there any vehicles which did not display proper D.O.T numbers and placards?		*Yes ()	No ()	NA (x)
Were there any vehicles which were not lined or tarped?		*Yes ()	No ()	NA (x)
Were there any vehicles which were not decontaminated prior to exiting the work site?		* Yes ()	No ()	NA (x)

DAILY OBSERVATION REPORT

Materials Removed From Site: N/A

Disposal Facility's:

Total Loads: (on this date)

Total Loads: (to date)

Total Daily Weight: (est.)

Total Weight: (*approx.)

*Actual (total weight) adjusted periodically based on weight tickets submitted by the disposal facilities.

Summary of Events:

- ADT had to abandon and backfill SB-24 due to worn threads on sampler and incorrect sampler for required volume. Per Arcadis, it will be resumed on Monday
- ADT completing MW-1 development, Arcadis taking data
- ADT completed soil borings SB-23 and SB-14 with geoprobe 7822DT drill rig. Arcadis took 2 soil samples per 5 foot interval for sampling
- Arcadis and Integral took emerging contaminant samples
- SB-23 was completed to 49 ft. bgs with varying degrees of contamination observed (see notes/pictures below)
- SB-14 was completed to 47.5 ft. bgs with varying degrees of contamination observed (see notes/pictures below)
- Both borings were backfilled with clean sand media

VISITORS TO SITE:

NAME	Representing	Entered Exclusion/CRZ Zone	
Devin, Mike ,Luke, Jeremy	ADT	Yes (x)	No ()
Bailey, Adam	Arcadis	Yes (x)	No ()
Dan	Integral	Yes (x)	No ()
		Yes ()	No ()

PROJECT SCHEDULE:

- Soil borings to continue in weekend work area tomorrow

ISSUES PENDING:

ITEMS OF CONCERN:

SITE REPRESENTATIVE /
CONSTRUCTION INSPECTOR:
Bradley Demo

Name: (*signature*)

Bradley Demo

Date: 9/15/2023

DAILY OBSERVATION REPORT



Site conditions/contaminated soil roll off container

DAILY OBSERVATION REPORT



Setting up at SB-23

DAILY OBSERVATION REPORT



Clean topsoil from clearing borings to 5 feet

DAILY OBSERVATION REPORT



Taking soil samples for analysis

DAILY OBSERVATION REPORT



Setting up at SB-14

DAILY OBSERVATION REPORT



Moving air monitoring stations for varying wind direction

DAILY OBSERVATION REPORT



SB-23, ~10 ft. bgs, silty sand with trace cobbles and slight sheen

DAILY OBSERVATION REPORT



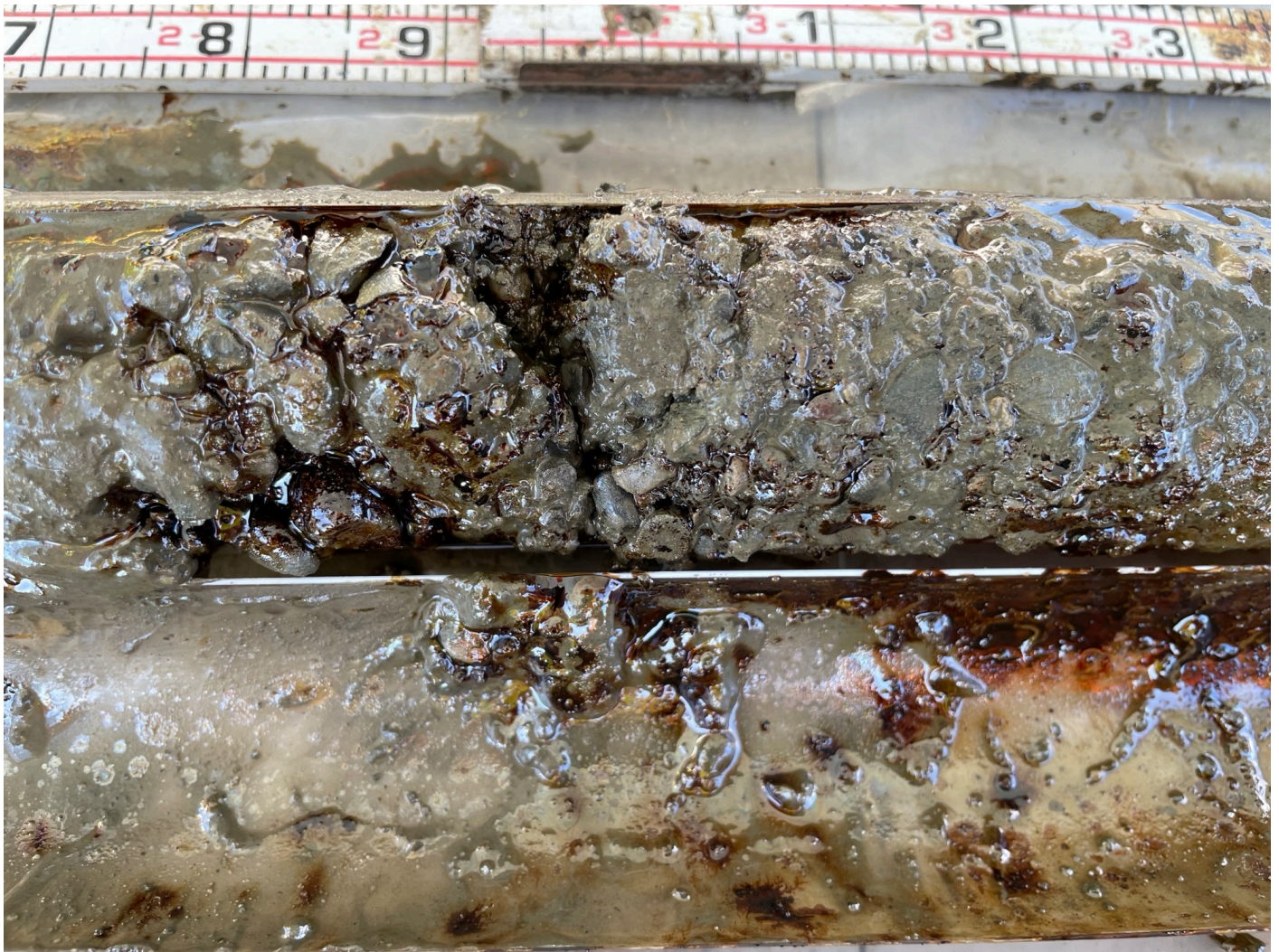
SB23 13-15 ft. bgs silty sand with light black staining

DAILY OBSERVATION REPORT



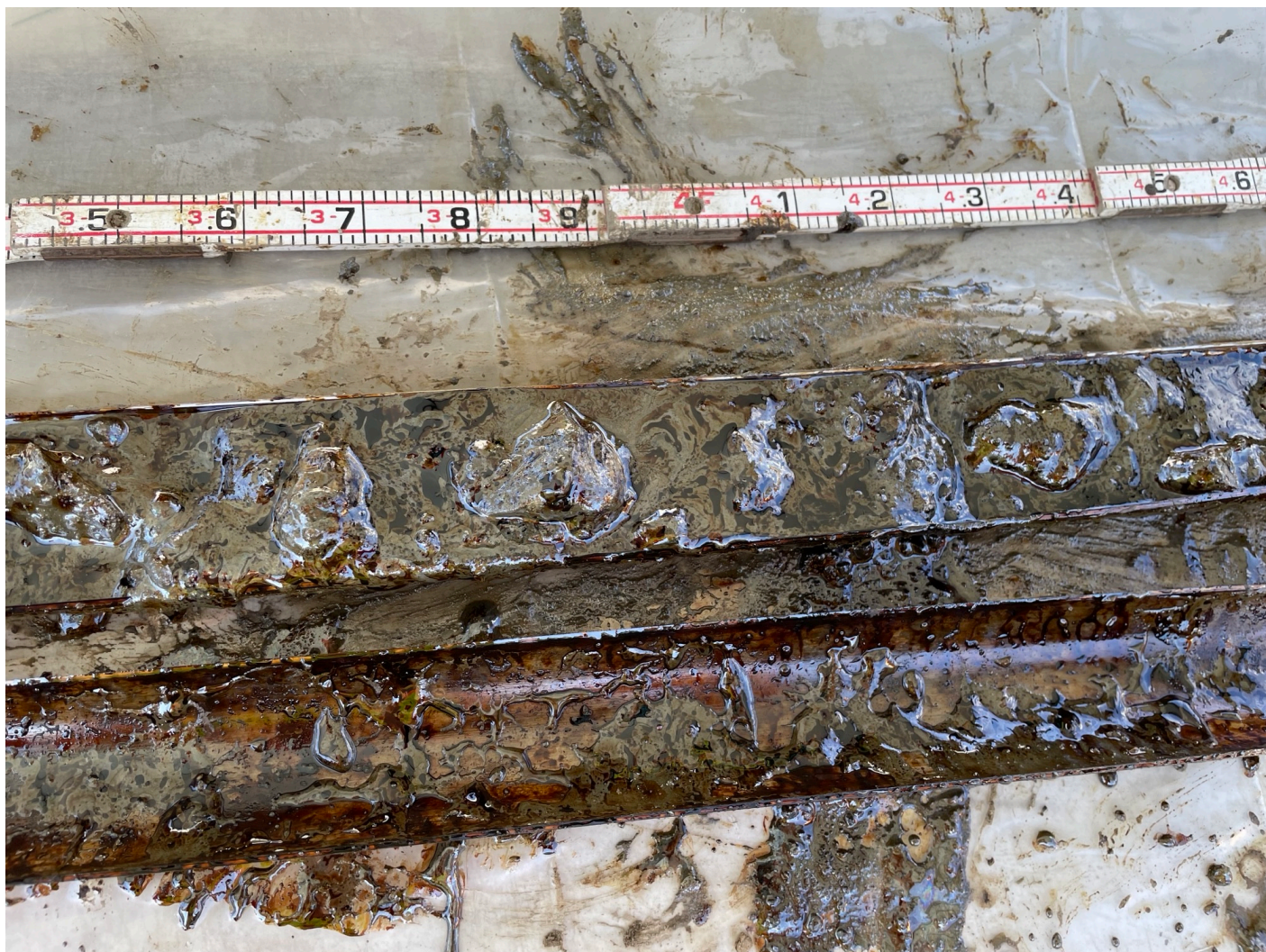
SB-23 ≈22 ft. bgs. gray, wet sand with sheen and moderate coating

DAILY OBSERVATION REPORT



SB23, ≈ gray, wet, gravely silt with trace cobbles. Saturated with blebs/NAPL

DAILY OBSERVATION REPORT



SB-23 ≈33 ft. bgs. gravel with blebs and NAPL

DAILY OBSERVATION REPORT



SB-23 ≈35 ft. bgs gravel and NAPL

DAILY OBSERVATION REPORT



SB-23 ≈39 ft. bgs wet gray silt with gravel and moderate coating

DAILY OBSERVATION REPORT



SB-23 \approx 42 ft. bgs Silty sand with gravel and heavy coating. Strong MGP odor.

DAILY OBSERVATION REPORT



SB-14 \approx 14 ft. bgs moist sand with gravel and cobbles. Lightly coated and moderate MGP odor. 659.8 ppm VOCs.

DAILY OBSERVATION REPORT



SB-14 \approx 19.5 ft bgs. Wet, clayey sand with narrow band of saturation/NAPL. 68 ppm VOCs.

DAILY OBSERVATION REPORT



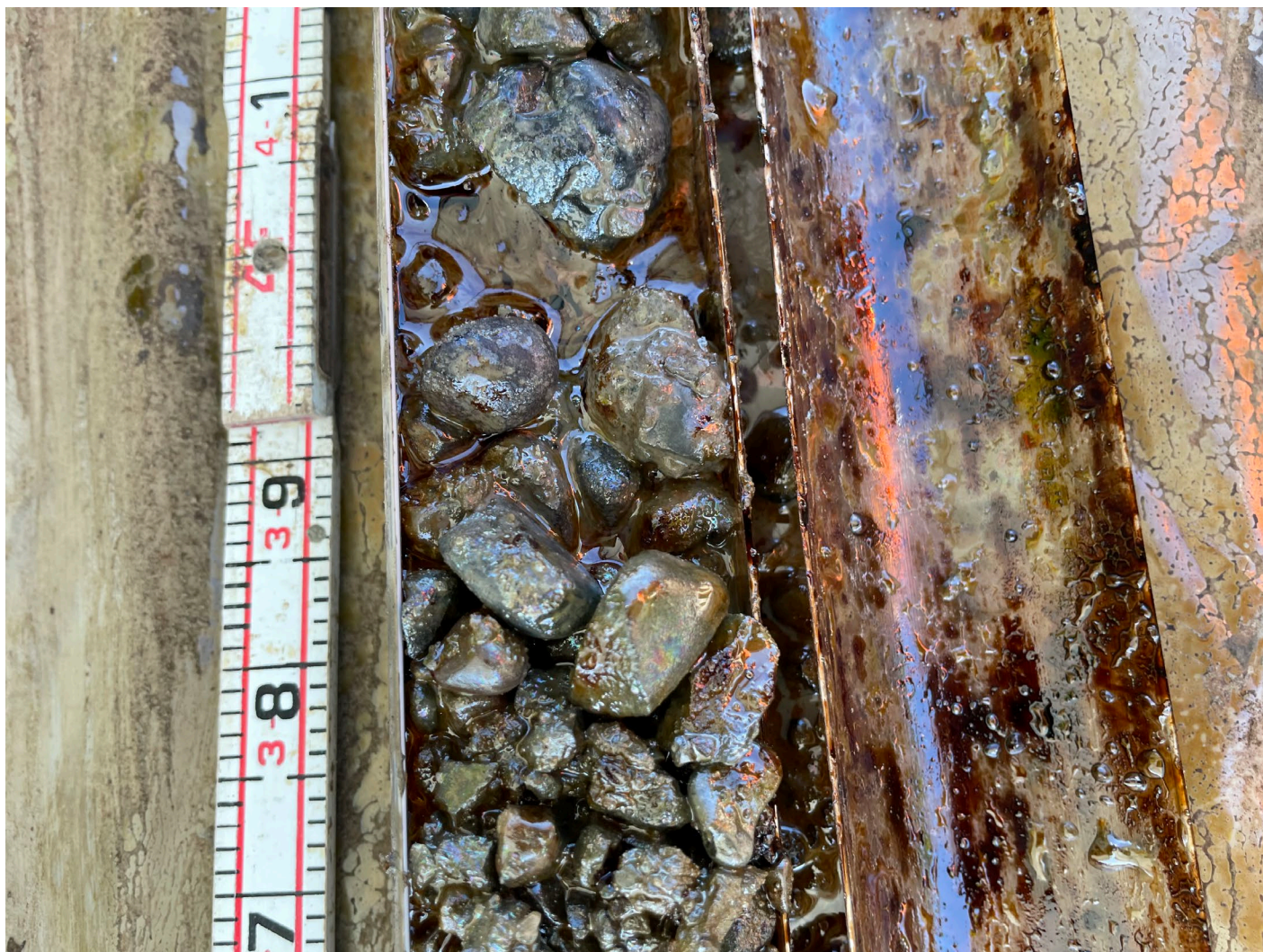
SB-14 ≈22 ft. bgs Wet silty-sand with blebs/NAPL 682 ppm VOCs

DAILY OBSERVATION REPORT



SB-14 ≈33 ft. bgs Gravel and trace silt with free product/NAPL. Moderate MGP odor. 168 ppm VOCs.

DAILY OBSERVATION REPORT



SB-14 ≈39 ft. bgs Gravel and cobbles with heavy coating. 64 ppm VOCs

DAILY OBSERVATION REPORT



SB-14, \approx 47 ft. bgs wet, poorly graded, very fine sand with sheen