

COMMUNITY UPDATE

GREATER CORNING AREA Chemung River & Tributaries Study



**Department of
Environmental
Conservation**

Industrial waste, including ash, brick, and glass (ABG), has been historically disposed of in the Greater Corning area in Steuben County. The former Corning Glass Works, Main Plant (located at One Riverfront Plaza, Corning) operated beginning in 1868 and consisted of three factories which included operations such as glass mixing, glass melting, electro-conductive coating, chrome plating, and chemical laboratories.

The scope of upcoming investigation includes surveying the Chemung River for impacts from these factories related to the historic disposal of ABG.

Chemung River & Tributaries Study – Site Characterization

New York State Department of Environmental Conservation (DEC) and its consultants are planning a Site Characterization ("study") of the Chemung River and several nearby creeks in the Corning area to better understand where ash, brick, and glass (ABG) materials may be present. The study will focus on locating these ABG materials and evaluating any related impacts to river and creek sediments, floodplains, wetlands, and surface water.

This newsletter describes what work is planned, when it will occur, and how it may affect nearby residents and river users. DEC is committed to sharing information and progress with the community.

For more information

Email: PublicAvailability.Corning@Parsons.com

Call the Project Hotline: 833-770-1716

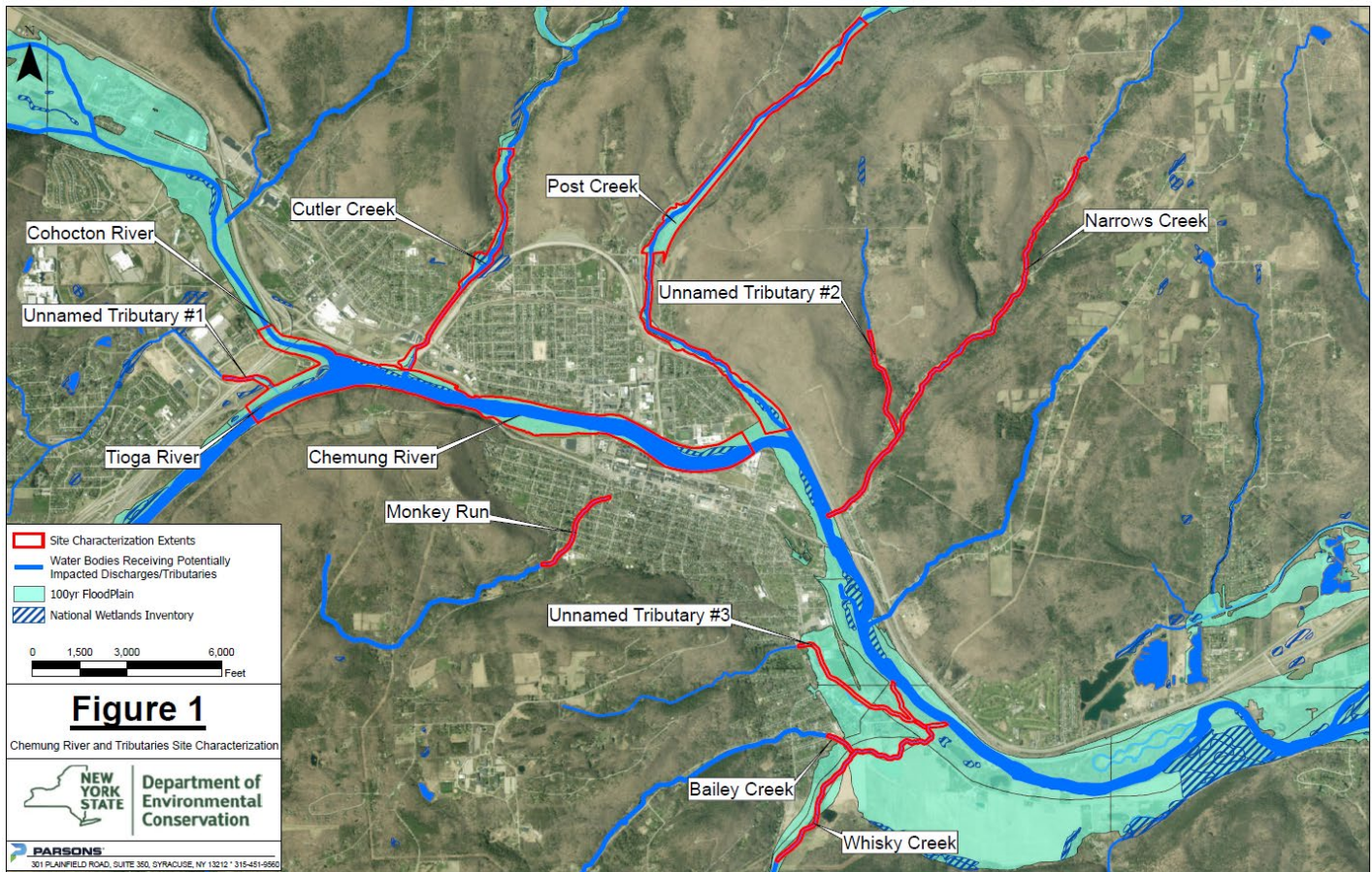
Additional project documents will be posted as they become available:

www.dec.ny.gov/DERExternalSearch/ERDSearch

Search Site code **851042**.

Where will the work take place?

The study will cover about **14.9 miles (approximately 78,500 feet)** of river and tributary channels in and around Corning.



What will field crews be doing?

You may observe our teams performing visual inspections and site walks along riverbanks and tributaries to look for ABG and identify depositional areas. Crews will also be surveying to map the river bottom depths, banks, floodplains, and wetlands. You may also see sediment probing, which uses rods or similar tools to understand what's on the river bottom and how thick the sediment layer is. At some targeting locations, teams may perform sampling, where small amounts of sediment and water are collected, labeled, and sent to certified laboratories for analysis.

Crews will work to minimize disturbance and will follow applicable environmental and safety requirements.

What will happen? And When?

Fieldwork is planned from **May through October 2026** (weather, river conditions, and access permitting).

Spring–Fall 2026: Field Surveys and Physical Characterization, Sampling

You may see boats, survey equipment, and small teams working along the banks and within the river and creeks during this period.

Fall 2026: Data Evaluation and Reporting

After data collection and analysis are completed, the results will help DEC and its partners:

- Map where ABG is present in the Chemung River and tributaries.
- Understand how ABG and any associated materials may have affected sediments, floodplains, wetlands, and surface water.
- Develop or refine the overall understanding (conceptual site model) of how materials may have moved through the river system.

These findings will inform any future decisions about additional investigation or potential cleanup actions.

Comments and questions are always welcome!

General Inquiries/Comments for
NYSDEC Team
Email:
PublicAvailability.Corning@Parsons.com
Toll-Free Project Hotline: 833-770-1716

Thoren Giannuzzi
NYSDEC, Project Manager
518-402-8246,
Thoren.Giannuzzi@dec.ny.gov

Scott Williams
NYSDEC, Construction Inspector
585-773-8034,
Scott.Williams@dec.ny.gov

John Robinson
NYSDOH, Project Manager
518-402-7881,
Johnathan.Robinson@health.ny.gov

For more information:

Additional project documents will be posted on the Environmental Site Remediation Database Search and DECinfo Locator as they become available:

www.dec.ny.gov/DERExternalSearch/ERDSearch
Search Site code **851042**.

www.dec.ny.gov/maps/interactive-maps/decinfo-locator

Click Environmental Cleanup under NYSDEC Information Layers. Zoom in or search “Corning” to see this and other sites in the Corning area.

Project documents are also made available at the Southeast Steuben County Library (607-936-3713) and Region 8 NYSDEC Headquarters (585-226-5324).

DEC’s Environmental Cleanup Within the Greater Corning Area Website:

www.dec.ny.gov/chemical/97180.html

Sign up to Receive Updates by Email:

www.dec.ny.gov/chemical/61092.html