



Integral Engineering, P.C.
31 West 34th Street
Suite 7196
New York, NY 10001

telephone: 212.962.4303
www.integral-corp.com

PROGRESS REPORT

To:	Robert Strang
From:	Jeffrey Marsh, P.E.
Subject:	Post Creek Site Characterization
Reporting Period:	July 24, 2023 – July 28, 2023
Integral Project No.:	EF174
NYSDEC Project No.:	851053

ACTIVITIES PERFORMED

Site survey field work was performed from July 24 through July 28, 2023, in accordance with the NYSDEC-approved Post Creek Characterization Work Plan. Survey field work was conducted at parcels:

- 282.00-02-042.120
- 282.00-02-018.200 (N)
- 282.00-02-018.200 (S)
- 282.00-02-018.120
- 282.00-02-039.000

Additionally, reconnaissance activities were conducted in Post Creek to evaluate conditions in the creek, including obstacles to mobility and potential access points for sediment and surface water sampling, and to confirm areas of sediment deposition in Post Creek.

WORK PLAN MODIFICATIONS

None.

AIR MONITORING RESULTS

N/A

UPCOMING ACTIVITIES

- The survey team and Integral will remobilize from August 9 through August 11, 2023 to complete survey and reconnaissance field activities in the investigation area.
- Integral will finalize sampling locations based on boundary survey data.

SCHEDULE

Survey and reconnaissance activities are on schedule and sample locations are scheduled to be finalized by September 5, 2023, consistent with the project schedule submitted on July 10, 2023.



Integral Engineering, P.C.
31 West 34th Street
Suite 7196
New York, NY 10001

telephone: 212.962.4303
www.integral-corp.com

PROGRESS REPORT

To:	Robert Strang
From:	Jeffrey Marsh, P.E.
Subject:	Post Creek Site Characterization
Reporting Period:	August 07, 2023 – August 11, 2023
Integral Project No.:	EF174
NYSDEC Project No.:	851053

ACTIVITIES PERFORMED

Site survey field work was performed from August 9 through August 11, 2023, in accordance with the NYSDEC-approved Post Creek Characterization Work Plan. Survey field work was conducted at parcels:

- 282.00-02-042.120
- 282.00-02-018.200 (N)
- 282.00-02-018.200 (S)
- 282.00-02-018.120
- 282.00-02-039.000

Additional reconnaissance activities were conducted in Post Creek to evaluate conditions in the creek, including obstacles to mobility and potential access points for sediment and surface water sampling, and to confirm areas of sediment deposition in Post Creek.

WORK PLAN MODIFICATIONS

None.

AIR MONITORING RESULTS

N/A

UPCOMING ACTIVITIES

- Integral will finalize sampling locations based on boundary survey data.

SCHEDULE

Sample locations are scheduled to be finalized by September 5, 2023, consistent with the project schedule submitted on July 10, 2023.



Integral Engineering, P.C.
31 West 34th Street
Suite 7196
New York, NY 10001

telephone: 212.962.4303
www.integral-corp.com

PROGRESS REPORT

To:	Robert Strang, E.I.T.(NYSDEC)
From:	Jeffrey Marsh, P.E.
Subject:	Post Creek Site Characterization
Reporting Period:	January 8–12, 2024
Integral Project No.:	EF1049
NYSDEC Project No.:	851058

ACTIVITIES PERFORMED

Site characterization fieldwork was performed January 9–12, 2024, in accordance with the New York State Department of Environmental Conservation (NYSDEC)-approved Site Characterization Work Plan. Pre-fieldwork mobilization activities occurred on January 8, 2024. A summary of the work completed is as follows:

- Mark out and clearance of sampling locations on Parcels 282.00-02-039.000, 282.00-02-018.120, and 282.00-02-018.200 (N & S)
- Sampling and logging of SS-34, SS-36, SS-37, SS-38, and SS-39
- Sampling and logging of SB-20, SB-21, SB-22, and SB-23.

WORK PLAN MODIFICATIONS

Soil cores were collected and logged via direct push drilling in accordance with the Site Characterization Work Plan at each sampling location. Additional material to meet the volume requirements was collected with a decontaminated steel shovel from the intervals of 0–2 and 0–6 in. below ground surface at surface soil sample locations SS-36 and SS-37.

AIR MONITORING RESULTS

Air monitoring was performed in accordance with the NYSDEC-approved Community Air Monitoring Plan (CAMP). Data were collected with a DustTrak and photoionization detector unit via telemetry and backed up with manual readings in 30-minute increments. Data collected during this work are attached.

UPCOMING ACTIVITIES AND SCHEDULE

Site characterization activities at the parcels identified above continued the week beginning January 15, 2024. Site characterization activities at Parcel 282.00-02-042.120 are being scheduled with the property owner. Surface water and sediment sampling are scheduled for April 2024, and monitoring well installation and groundwater sampling are scheduled for September 2024, in accordance with the schedule provided to NYSDEC on October 27, 2023.

**Post Creek, Highway 414, Corning NY (NYSDEC Project #851058)
Air Monitoring Results - January 9, 2024**

Time	Downwind		Upwind	
	Mass Concentration (mg/m ³) ^a	PID (ppm)	Mass Concentration (mg/m ³) ^a	PID (ppm)
Jan 9 2024 10:40:00 AM	0.023	0	0.02	0
Jan 9 2024 10:50:00 AM	0.022	0.004	0.018	0
Jan 9 2024 11:00:00 AM	0.018	0.012	0.016	0
Jan 9 2024 11:10:00 AM	0.018	0.009	0.015	0
Jan 9 2024 11:20:00 AM	0.018	0.013	0.014	0
Jan 9 2024 11:30:00 AM	0.014	0.013	0.013	0
Jan 9 2024 11:40:00 AM	0.015	0.009	0.012	0
Jan 9 2024 11:50:00 AM	0.012	0.01	0.011	0
Jan 9 2024 12:00:00 PM	0.01	0.014	0.009	0
Jan 9 2024 12:10:00 PM	0.009	0.013	0.008	0
Jan 9 2024 12:20:00 PM	0.007	0.017	0.007	0
Jan 9 2024 12:30:00 PM	0.006	0.015	0.006	0
Jan 9 2024 12:40:00 PM	0.006	0.021	0.004	0
Jan 9 2024 12:50:00 PM	0.005	0.014	0.004	0
Jan 9 2024 1:00:00 PM	0.005	0.016	0.004	0
Jan 9 2024 1:10:00 PM	0.003	0.019	0.003	0
Jan 9 2024 1:20:00 PM	0.003	0.02	0.002	0
Jan 9 2024 1:30:00 PM	0.002	0.019	0.001	0
Jan 9 2024 1:40:00 PM	0.001	0.035	0.001	0
Jan 9 2024 1:50:00 PM	0.002	0.026	0.001	0
Jan 9 2024 2:00:00 PM	0.002	0.023	0.001	0
Jan 9 2024 2:10:00 PM	0.001	0.023	0.001	0
Jan 9 2024 2:20:00 PM	0.001	0.023	0.001	0
Jan 9 2024 2:30:00 PM	0.003	0.021	0.002	0
Jan 9 2024 2:40:00 PM	0.002	0.021	0.001	0
Jan 9 2024 2:50:00 PM	0.002	0.024	0.001	0
Jan 9 2024 3:00:00 PM	0.002	0.047	0.001	0
Jan 9 2024 3:10:00 PM	0.002	0.037	0.001	0
Jan 9 2024 3:20:00 PM	0.001	0.025	0.001	0
Jan 9 2024 3:30:00 PM	0.001	0.024	0.001	0
Jan 9 2024 3:40:00 PM	0.001	0.025	0	0
Jan 9 2024 3:50:00 PM	0.001	0.023	0.001	0
Jan 9 2024 4:00:00 PM	0.002	0.022	0.001	0
Jan 9 2024 4:10:00 PM	0.001	0.023	0.001	0
Jan 9 2024 4:20:00 PM	0.001	0.021	0.001	0

Notes:

- CAMP = Community Air Monitoring Plan
- NYSDEC = New York State Department of Environmental Conservation
- PID = photoionization detector
- ppm = parts per million
- VOC = volatile organic compound

^a CAMP limits are defined as follows: 100 µg/m³ (0.1 mg/m³) sustained for 15 minutes or 150 µg/m³ (0.1 mg/m³) instantaneous greater than background for particulates; and at 5 ppm above background sustained for 15 minutes, >5 ppm but <25 ppm above background sustained for 15 minutes, and >25 ppm above background instantaneous for VOCs.

**Post Creek, Highway 414, Corning NY (NYSDEC Project #851058)
Air Monitoring Results - January 10, 2024**

Time	Downwind		Upwind	
	Mass Concentration (mg/m ³) ^a	PID (ppm)	Mass Concentration (mg/m ³) ^a	PID (ppm)
Jan 10 2024 10:20:00 AM	0.004	0.046	0.003	0.002
Jan 10 2024 10:30:00 AM	0.003	0.049	0.003	0.003
Jan 10 2024 10:40:00 AM	0.003	0.055	0.003	0.002
Jan 10 2024 10:50:00 AM	0.003	0.058	0.003	0.002
Jan 10 2024 11:00:00 AM	0.003	0.06	0.003	0.003
Jan 10 2024 11:10:00 AM	0.003	0.061	0.003	0.005
Jan 10 2024 11:20:00 AM	0.003	0.063	0.003	0.005
Jan 10 2024 11:30:00 AM	0.003	0.064	0.002	0.003
Jan 10 2024 11:40:00 AM	0.003	0.067	0.002	0.003
Jan 10 2024 11:50:00 AM	0.003	0.069	0.002	0.003
Jan 10 2024 12:00:00 PM	0.003	0.073	0.003	0.003
Jan 10 2024 12:10:00 PM	0.003	0.072	0.003	0.007
Jan 10 2024 12:20:00 PM	0.003	0.078	0.002	0.008
Jan 10 2024 12:30:00 PM	0.003	0.077	0.002	0.013
Jan 10 2024 12:40:00 PM	0.003	0.083	0.002	0.015
Jan 10 2024 12:50:00 PM	0.003	0.08	0.004	0.019
Jan 10 2024 1:00:00 PM	0.003	0.081	0.003	0.019
Jan 10 2024 1:10:00 PM	0.003	0.08	0.002	0.02
Jan 10 2024 1:20:00 PM	0.003	0.081	0.002	0.024
Jan 10 2024 1:30:00 PM	0.003	0.083	0.002	0.027
Jan 10 2024 1:40:00 PM	0.003	0.084	0.002	0.026
Jan 10 2024 1:50:00 PM	0.003	0.084	0.002	0.025
Jan 10 2024 2:00:00 PM	0.003	0.083	0.002	0.023
Jan 10 2024 2:10:00 PM	0.003	0.079	0.002	0.018
Jan 10 2024 2:20:00 PM	0.003	0.08	0.002	0.017
Jan 10 2024 2:30:00 PM	0.003	0.084	0.002	0.019
Jan 10 2024 2:40:00 PM	0.003	0.083	0.002	0.02
Jan 10 2024 2:50:00 PM	0.004	0.084	0.002	0.022
Jan 10 2024 3:00:00 PM	0.003	0.085	0.002	0.02
Jan 10 2024 3:10:00 PM	0.003	0.086	0.005	0.019

Notes:

- CAMP = Community Air Monitoring Plan
- NYSDEC = New York State Department of Environmental Conservation
- PID = photoionization detector
- ppm = parts per million
- VOC = volatile organic compound

^a CAMP limits are defined as follows: 100 µg/m³ (0.1 mg/m³) sustained for 15 minutes or 150 µg/m³ (0.1 mg/m³) instantaneous greater than background for particulates; and at 5 ppm above background sustained for 15 minutes, >5 ppm but <25 ppm above background sustained for 15 minutes, and >25 ppm above background instantaneous for VOCs.

**Post Creek, Highway 414, Corning NY (NYSDEC Project #851058)
Air Monitoring Results - January 11, 2024**

Time	Downwind		Upwind	
	Mass Concentration (mg/m ³) ^a	PID (ppm)	Mass Concentration (mg/m ³) ^a	PID (ppm)
Jan 11 2024 8:10:00 AM	0.002	0	0.007 ^b	0 ^b
Jan 11 2024 8:20:00 AM	0.007	0	0.01	0
Jan 11 2024 8:30:00 AM	0.008	0	0.008	0
Jan 11 2024 8:40:00 AM	0.009	0	0.008	0
Jan 11 2024 8:50:00 AM	0.01	0	0.011	0
Jan 11 2024 9:00:00 AM	0.011	0	0.012	0
Jan 11 2024 9:10:00 AM	0.012	0.001	0.012	0
Jan 11 2024 9:20:00 AM	0.016	0.002	0.013	0
Jan 11 2024 9:30:00 AM	0.017	0	0.013	0
Jan 11 2024 9:40:00 AM	0.017	0	0.012	0
Jan 11 2024 9:50:00 AM	0.014	0	0.014	0.001
Jan 11 2024 10:00:00 AM	0.013	0	0.012	0
Jan 11 2024 10:10:00 AM	0.012	0.008	0.011	0
Jan 11 2024 10:20:00 AM	0.012	0.008	0.011	0.001
Jan 11 2024 10:30:00 AM	0.011	0.002	0.011	0.001
Jan 11 2024 10:40:00 AM	0.011	0.002	0.01	0.001
Jan 11 2024 10:50:00 AM	0.011	0	0.01	0
Jan 11 2024 11:00:00 AM	0.011	0	0.009	0
Jan 11 2024 11:10:00 AM	0.011	0	0.01	0.001
Jan 11 2024 11:20:00 AM	0.01	0	0.01	0.002
Jan 11 2024 11:30:00 AM	0.011	0	0.01	0.001
Jan 11 2024 11:40:00 AM	0.01	0.001	0.009	0.001
Jan 11 2024 11:50:00 AM	0.01	0	0.009	0.001
Jan 11 2024 12:00:00 PM	0.01	0	0.009	0.001
Jan 11 2024 12:10:00 PM	0.01	0	0.009	0.001
Jan 11 2024 12:20:00 PM	0.011	0	0.009	0.002
Jan 11 2024 12:30:00 PM	0.01	0	0.009	0.006
Jan 11 2024 12:40:00 PM	0.01	0	0.008	0.001
Jan 11 2024 12:50:00 PM	0.01	0	0.008	0
Jan 11 2024 1:00:00 PM	0.01	0	0.009	0
Jan 11 2024 1:10:00 PM	0.012	0	0.01	0
Jan 11 2024 1:20:00 PM	0.011	0	0.01	0
Jan 11 2024 1:30:00 PM	0.011	0	0.01	0
Jan 11 2024 1:40:00 PM	0.012	0	0.011	0
Jan 11 2024 1:50:00 PM	0.012	0	0.011	0
Jan 11 2024 2:00:00 PM	0.012	0	0.011	0
Jan 11 2024 2:10:00 PM	0.012	0	0.011	0
Jan 11 2024 2:20:00 PM	0.013	0	0.011	0
Jan 11 2024 2:30:00 PM	0.013	0	0.012	0
Jan 11 2024 2:40:00 PM	0.014	0.001	0.013	0
Jan 11 2024 2:50:00 PM	0.014	0.022	0.014	0
Jan 11 2024 3:00:00 PM	0.014	0.036	0.014	0
Jan 11 2024 3:10:00 PM	0.015	0.032	0.014	0
Jan 11 2024 3:20:00 PM	0.014	0.032	0.014	0
Jan 11 2024 3:30:00 PM	0.014	0.001	0.013	0
Jan 11 2024 3:40:00 PM	0.014	0.002	0.013	0

Notes:

- CAMP = Community Air Monitoring Plan
- NYSDEC = New York State Department of Environmental Conservation
- PID = photoionization detector
- ppm = parts per million
- VOC = volatile organic compound

^a CAMP limits are defined as follows: 100 µg/m³ (0.1 mg/m³) sustained for 15 minutes or 150 µg/m³ (0.1 mg/m³) instantaneous greater than background for particulates; and at 5 ppm above background sustained for 15 minutes, >5 ppm but <25 ppm above background sustained for 15 minutes, and >25 ppm above background instantaneous for VOCs.

^b Manual readings are provided for particulates and VOCs at the subject time. Characterization activities and drilling began at 08:15 AM EST.

**Post Creek, Highway 414, Corning NY (NYSDEC Project #851058)
Air Monitoring Results - January 12, 2024**

Time	Downwind		Upwind	
	Mass Concentration (mg/m ³) ^a	PID (ppm)	Mass Concentration (mg/m ³) ^a	PID (ppm)
Jan 12 2024 8:30:00 AM	0.015	0	0.01	0
Jan 12 2024 8:40:00 AM	0.013	0	0.011	0
Jan 12 2024 8:50:00 AM	0.015	0	0.013	0
Jan 12 2024 9:00:00 AM	0.015	0	0.013	0
Jan 12 2024 9:10:00 AM	0.015	0.013	0.013	0
Jan 12 2024 9:20:00 AM	0.015	0	0.014	0
Jan 12 2024 9:30:00 AM	0.018	0.001	0.013	0
Jan 12 2024 9:40:00 AM	0.016	0	0.013	0
Jan 12 2024 9:50:00 AM	0.015	0	0.013	0
Jan 12 2024 10:00:00 AM	0.015	0	0.013	0
Jan 12 2024 10:10:00 AM	0.015	0	0.013	0
Jan 12 2024 10:20:00 AM	0.014	0	0.016	0
Jan 12 2024 10:30:00 AM	0.014	0	0.013	0
Jan 12 2024 10:40:00 AM	0.014	0	0.013	0
Jan 12 2024 10:50:00 AM	0.015	0	0.013	0
Jan 12 2024 11:00:00 AM	0.017	0.006	0.013	0
Jan 12 2024 11:10:00 AM	0.014	0	0.011	0
Jan 12 2024 11:20:00 AM	0.013	0	0.01	0
Jan 12 2024 11:30:00 AM	0.012	0	0.01	0
Jan 12 2024 11:40:00 AM	0.012	0.001	0.009	0
Jan 12 2024 11:50:00 AM	0.013	0.002	0.009	0
Jan 12 2024 12:00:00 PM	0.011	0	0.009	0
Jan 12 2024 12:10:00 PM	0.011	0	0.008	0
Jan 12 2024 12:20:00 PM	0.01	0	0.008	0
Jan 12 2024 12:30:00 PM	0.01	0	0.008	0

Notes:

- CAMP = Community Air Monitoring Plan
- NYSDEC = New York State Department of Environmental Conservation
- PID = photoionization detector
- ppm = parts per million
- VOC = volatile organic compound

^a CAMP limits are defined as follows: 100 µg/m³ (0.1 mg/m³) sustained for 15 minutes or 150 µg/m³ (0.1 mg/m³) instantaneous greater than background for particulates; and at 5 ppm above background sustained for 15 minutes, >5 ppm but <25 ppm above background sustained for 15 minutes, and >25 ppm above background instantaneous for VOCs.



Integral Engineering, P.C.
31 West 34th Street
Suite 7196
New York, NY 10001

telephone: 212.962.4303
www.integral-corp.com

PROGRESS REPORT

To: Robert Strang, E.I.T.(NYSDEC)
From: Jeffrey Marsh, P.E.
Subject: Post Creek Site Characterization
Reporting Period: January 15–19, 2024
Integral Project No.: EF1049
NYSDEC Project No.: 851053

ACTIVITIES PERFORMED

Site characterization fieldwork was performed January 15–19, 2024, in accordance with the New York State Department of Environmental Conservation (NYSDEC)-approved Site Characterization Work Plan. Drilling and sampling activities were canceled on January 17, 2024, due to severe winter weather that impacted sample shipment and delivery. A summary of the work completed is as follows:

- Sampling and logging of SS-29, SS-30, SS-31, SS-32, SS-33, and SS-35
- Sampling and logging of SB-13, SB-14, SB-15, SB-16, SB-18.¹

WORK PLAN MODIFICATIONS

None.

AIR MONITORING RESULTS

Air monitoring was performed in accordance with the NYSDEC-approved Community Air Monitoring Plan. Data were collected with a DustTrak and photoionization detector unit

¹ SB-17 and SB-19 were sampled and logged on January 12, 2024.

via telemetry and backed up with manual readings in 30-minute increments. Data collected during this work are attached.

UPCOMING ACTIVITIES AND SCHEDULE

Site characterization activities at Parcel 282.00-02-042.120 are scheduled to begin February 12, 2024. Surface water and sediment sampling are scheduled for April 2024, and monitoring well installation and groundwater sampling are scheduled for October 2024, in accordance with the attached updated schedule.

**Post Creek, Highway 414, Corning NY (NYSDEC Project #851053)
Air Monitoring Results - January 15, 2024**

Time	Downwind		Upwind	
	Mass Concentration (mg/m ³) ^a	PID (ppm)	Mass Concentration (mg/m ³) ^a	PID (ppm)
Jan 15 2024 12:10:00 PM	0.008	0	0.007	0
Jan 15 2024 12:20:00 PM	0.008	0	0.007	0
Jan 15 2024 12:30:00 PM	0.009	0	0.008	0
Jan 15 2024 12:40:00 PM	0.011	0	0.01	0
Jan 15 2024 12:50:00 PM	0.012	0	0.01	0
Jan 15 2024 1:00:00 PM	0.011	0	0.011	0
Jan 15 2024 1:10:00 PM	0.012	0	0.01	0
Jan 15 2024 1:20:00 PM	0.011	0	0.01	0
Jan 15 2024 1:30:00 PM	0.01	0	0.01	0
Jan 15 2024 1:40:00 PM	0.01	0	0.009	0
Jan 15 2024 1:50:00 PM	0.01	0	0.008	0
Jan 15 2024 2:00:00 PM	0.009	0	0.008	0
Jan 15 2024 2:10:00 PM	0.009	0	0.008	0
Jan 15 2024 2:20:00 PM	0.008	0	0.008	0
Jan 15 2024 2:30:00 PM	0.007	0	0.007	0
Jan 15 2024 2:40:00 PM	0.007	0	0.007	0
Jan 15 2024 2:50:00 PM	0.007	0	0.007	0
Jan 15 2024 3:00:00 PM	0.006	0	0.007	0
Jan 15 2024 3:10:00 PM	0.006	0	0.007	0
Jan 15 2024 3:20:00 PM	0.006	0	0.007	0
Jan 15 2024 3:30:00 PM	0.007	0	0.007	0
Jan 15 2024 3:40:00 PM	0.007	0	0.007	0
Jan 15 2024 3:50:00 PM	0.007	0	0.007	0
Jan 15 2024 4:00:00 PM	0.007	0	0.007	0
Jan 15 2024 4:10:00 PM	0.007	0	0.006	0
Jan 15 2024 4:20:00 PM	0.007	0	0.006	0
Jan 15 2024 4:30:00 PM	0.007	0	0.007	0
Jan 15 2024 4:40:00 PM	0.008	0	0.007	0
Jan 15 2024 4:50:00 PM	0.008	0	0.007	0
Jan 15 2024 5:00:00 PM	0.008	0	0.008	0
Jan 15 2024 5:10:00 PM	0.009	0	0.008	0
Jan 15 2024 5:20:00 PM	0.008	0	0.008	0

Notes:

- CAMP = Community Air Monitoring Plan
- NYSDEC = New York State Department of Environmental Conservation
- PID = photoionization detector
- ppm = parts per million
- VOC = volatile organic compound

^a CAMP limits are defined as follows: 100 µg/m³ (0.1 mg/m³) sustained for 15 minutes or 150 µg/m³ (0.1 mg/m³) instantaneous greater than background for particulates; and at 5 ppm above background sustained for 15 minutes, >5 ppm but <25 ppm above background sustained for 15 minutes, and >25 ppm above background instantaneous for VOCs.

**Post Creek, Highway 414, Corning NY (NYSDEC Project #851053)
Air Monitoring Results - January 16, 2024**

Time	Downwind		Upwind	
	Mass Concentration (mg/m ³) ^a	PID (ppm)	Mass Concentration (mg/m ³) ^a	PID (ppm)
Jan 16 2024 9:30:00 AM	0.029	0	0.025 ^b	0 ^b
Jan 16 2024 9:40:00 AM	0.023	0	0.022	0
Jan 16 2024 9:50:00 AM	0.023	0.006	0.023	0
Jan 16 2024 10:00:00 AM	0.022	0.02	0.021	0
Jan 16 2024 10:10:00 AM	0.02	0.031	0.02	0
Jan 16 2024 10:20:00 AM	0.019	0.043	0.021	0
Jan 16 2024 10:30:00 AM	0.019	0.052	0.018	0
Jan 16 2024 10:40:00 AM	0.019	0.06	0.018	0
Jan 16 2024 10:50:00 AM	0.02	0.067	0.019	0
Jan 16 2024 11:00:00 AM	0.021	0.074	0.02	0
Jan 16 2024 11:10:00 AM	0.022	0.079	0.021	0
Jan 16 2024 11:20:00 AM	0.022	0.084	0.021	0
Jan 16 2024 11:30:00 AM	0.021	0.088	0.02	0
Jan 16 2024 11:40:00 AM	0.02	0.093	0.019	0
Jan 16 2024 11:50:00 AM	0.019	0.097	0.018	0
Jan 16 2024 12:00:00 PM	0.019	0.099	0.018	0
Jan 16 2024 12:10:00 PM	0.018	0.103	0.017	0
Jan 16 2024 12:20:00 PM	0.018	0.109	0.017	0
Jan 16 2024 12:30:00 PM	0.018	0.111	0.017	0.001
Jan 16 2024 12:40:00 PM	0.019	0.114	0.018	0.002
Jan 16 2024 12:50:00 PM	0.018	0.117	0.017	0.004
Jan 16 2024 1:00:00 PM	0.018	0.117	0.017	0.005
Jan 16 2024 1:10:00 PM	0.018	0.119	0.017	0.004
Jan 16 2024 1:20:00 PM	0.017	0.123	0.017	0.007
Jan 16 2024 1:30:00 PM	0.018	0.124	0.017	0.009
Jan 16 2024 1:40:00 PM	0.018	0.126	0.017	0.011

Notes:

- CAMP = Community Air Monitoring Plan
- NYSDEC = New York State Department of Environmental Conservation
- PID = photoionization detector
- ppm = parts per million
- VOC = volatile organic compound

^a CAMP limits are defined as follows: 100 µg/m³ (0.1 mg/m³) sustained for 15 minutes or 150 µg/m³ (0.1 mg/m³) instantaneous greater than background for particulates; and at 5 ppm above background sustained for 15 minutes, >5 ppm but <25 ppm above background sustained for 15 minutes, and >25 ppm above background instantaneous for VOCs.

^b Manual readings are provided for particulates and VOCs at the subject time. Characterization activities and drilling began at approximately 09:40 AM EST.

**Post Creek, Highway 414, Corning NY (NYSDEC Project #851053)
Air Monitoring Results - January 18, 2024**

Time	Downwind		Upwind	
	Mass Concentration (mg/m ³) ^a	PID (ppm)	Mass Concentration (mg/m ³) ^a	PID (ppm)
Jan 18 2024 8:40:00 AM	0.014	0	0.014	0
Jan 18 2024 8:50:00 AM	0.014	0	0.014	0
Jan 18 2024 9:00:00 AM	0.015	0	0.014	0
Jan 18 2024 9:10:00 AM	0.015	0	0.016	0
Jan 18 2024 9:20:00 AM	0.015	0	0.014	0
Jan 18 2024 9:30:00 AM	0.015	0	0.014	0
Jan 18 2024 9:40:00 AM	0.015	0	0.014	0
Jan 18 2024 9:50:00 AM	0.015	0.001	0.014	0
Jan 18 2024 10:00:00 AM	0.015	0.004	0.014	0
Jan 18 2024 10:10:00 AM	0.015	0.01	0.014	0
Jan 18 2024 10:20:00 AM	0.015	0.014	0.014	0
Jan 18 2024 10:30:00 AM	0.015	0.018	0.013	0
Jan 18 2024 10:40:00 AM	0.014	0.022	0.013	0
Jan 18 2024 10:50:00 AM	0.014	0.025	0.013	0
Jan 18 2024 11:00:00 AM	0.013	0.027	0.013	0
Jan 18 2024 11:10:00 AM	0.013	0.029	0.012	0
Jan 18 2024 11:20:00 AM	0.013	0.032	0.012	0
Jan 18 2024 11:30:00 AM	0.014	0.034	0.012	0
Jan 18 2024 11:40:00 AM	0.013	0.036	0.012	0
Jan 18 2024 11:50:00 AM	0.013	0.04	0.012	0
Jan 18 2024 12:00:00 PM	0.013	0.043	0.012	0
Jan 18 2024 12:10:00 PM	0.013	0.046	0.011	0
Jan 18 2024 12:20:00 PM	0.012	0.045	0.011	0
Jan 18 2024 12:30:00 PM	0.012	0.047	0.011	0
Jan 18 2024 12:40:00 PM	0.012	0.05	0.011	0
Jan 18 2024 12:50:00 PM	0.012	0.049	0.011	0
Jan 18 2024 1:00:00 PM	0.013	0.051	0.01	0
Jan 18 2024 1:10:00 PM	0.012	0.05	0.01	0
Jan 18 2024 1:20:00 PM	0.011	0.046	0.011	0
Jan 18 2024 1:30:00 PM	0.011	0.047	0.011	0
Jan 18 2024 1:40:00 PM	0.012	0.049	0.011	0
Jan 18 2024 1:50:00 PM	0.011	0.051	0.01	0
Jan 18 2024 2:00:00 PM	0.011	0.05	0.01	0
Jan 18 2024 2:10:00 PM	0.013	0.052	0.01	0
Jan 18 2024 2:20:00 PM	0.01	0.052	0.01	0
Jan 18 2024 2:30:00 PM	0.011	0.053	0.01	0
Jan 18 2024 2:40:00 PM	0.011	0.055	0.01	0
Jan 18 2024 2:50:00 PM	0.011	0.058	0.01	0
Jan 18 2024 3:00:00 PM	0.011	0.058	0.01	0
Jan 18 2024 3:10:00 PM	0.011	0.057	0.01	0
Jan 18 2024 3:20:00 PM	0.011	0.058	0.01	0
Jan 18 2024 3:30:00 PM	0.011	0.058	0.011	0
Jan 18 2024 3:40:00 PM	0.011	0.059	0.01	0
Jan 18 2024 3:50:00 PM	0.01	0.059	0.01	0
Jan 18 2024 4:00:00 PM	0.01	0.061	0.01	0
Jan 18 2024 4:10:00 PM	0.012	0.06	0.011	0
Jan 18 2024 4:20:00 PM	0.012	0.062	0.011	0
Jan 18 2024 4:30:00 PM	0.012	0.065	0.012	0
Jan 18 2024 4:40:00 PM	0.012	0.067	0.011	0

Notes:

- CAMP = Community Air Monitoring Plan
- NYSDEC = New York State Department of Environmental Conservation
- PID = photoionization detector
- ppm = parts per million
- VOC = volatile organic compound

^a CAMP limits are defined as follows: 100 µg/m³ (0.1 mg/m³) sustained for 15 minutes or 150 µg/m³ (0.1 mg/m³) instantaneous greater than background for particulates; and at 5 ppm above background sustained for 15 minutes, >5 ppm but <25 ppm above background sustained for 15 minutes, and >25 ppm above background instantaneous for VOCs.

**Post Creek, Highway 414, Corning NY (NYSDEC Project #851053)
Air Monitoring Results - January 19, 2024**

Time	Downwind		Upwind	
	Mass Concentration (mg/m ³) ^a	PID (ppm)	Mass Concentration (mg/m ³) ^a	PID (ppm)
Jan 19 2024 8:30:00 AM	0.026	0	0.024	0
Jan 19 2024 8:40:00 AM	0.026	0	0.026	0
Jan 19 2024 8:50:00 AM	0.028	0	0.028	0
Jan 19 2024 9:00:00 AM	0.028	0	0.029	0
Jan 19 2024 9:10:00 AM	0.028	0	0.027	0
Jan 19 2024 9:20:00 AM	0.025	0	0.026	0
Jan 19 2024 9:30:00 AM	0.025	0.001	0.024	0
Jan 19 2024 9:40:00 AM	0.025	0.005	0.025	0
Jan 19 2024 9:50:00 AM	0.026	0.012	0.025	0
Jan 19 2024 10:00:00 AM	0.025	0.019	0.024	0
Jan 19 2024 10:10:00 AM	0.026	0.024	0.025	0
Jan 19 2024 10:20:00 AM	0.027	0.028	0.027	0
Jan 19 2024 10:30:00 AM	0.029	0.032	0.031	0
Jan 19 2024 10:40:00 AM	0.031	0.035	0.031	0.015
Jan 19 2024 10:50:00 AM	0.031	0.039	0.029	0
Jan 19 2024 11:00:00 AM	0.031	0.043	0.029	0
Jan 19 2024 11:10:00 AM	0.032	0.045	0.03	0
Jan 19 2024 11:20:00 AM	0.031	0.049	0.03	0
Jan 19 2024 11:30:00 AM	0.031	0.052	0.029	0
Jan 19 2024 11:40:00 AM	0.033	0.057	0.03	0
Jan 19 2024 11:50:00 AM	0.034	0.06	0.03	0
Jan 19 2024 12:00:00 PM	0.033	0.061	0.03	0
Jan 19 2024 12:10:00 PM	0.033	0.062	0.029	0
Jan 19 2024 12:20:00 PM	0.032	0.064	0.03	0
Jan 19 2024 12:30:00 PM	0.032	0.067	0.029	0
Jan 19 2024 12:40:00 PM	0.031	0.066	0.028	0
Jan 19 2024 12:50:00 PM	0.029	0.066	0.026	0
Jan 19 2024 1:00:00 PM	0.03	0.069	0.027	0
Jan 19 2024 1:10:00 PM	0.032	0.071	0.028	0
Jan 19 2024 1:20:00 PM	0.035	0.08	0.03	0
Jan 19 2024 1:30:00 PM	0.037	0.069	0.03	0
Jan 19 2024 1:40:00 PM	0.037	0.073	0.032	0
Jan 19 2024 1:50:00 PM	0.034	0.073	0.031	0
Jan 19 2024 2:00:00 PM	0.033	0.073	0.03	0
Jan 19 2024 2:10:00 PM	0.032	0.075	0.03	0
Jan 19 2024 2:20:00 PM	0.032	0.078	0.03	0
Jan 19 2024 2:30:00 PM	0.032	0.079	0.03	0

Notes:

- CAMP = Community Air Monitoring Plan
- NYSDEC = New York State Department of Environmental Conservation
- PID = photoionization detector
- ppm = parts per million
- VOC = volatile organic compound

^a CAMP limits are defined as follows: 100 µg/m³ (0.1 mg/m³) sustained for 15 minutes or 150 µg/m³ (0.1 mg/m³) instantaneous greater than background for particulates; and at 5 ppm above background sustained for 15 minutes, >5 ppm but <25 ppm above background sustained for 15 minutes, and >25 ppm above background instantaneous for VOCs.

Post Creek Site Characterization Schedule
Wed 1/26/24

ID	Task Name	Scheduled Start	Scheduled Finish	Half 2, 2023							Half 1, 2024					Half 2, 2024					Half 1, 2025					Half 2, 2025					
				J	J	A	S	O	N	D	J	F	M	A	M	J	J	A	S	O	N	D	J	F	M	A	M	J	J	A	S
1	Access Agreements, Coordination, Survey	Tue 6/27/23	Fri 10/13/23	[Task Bar]																											
2	Access Agreements Implemented	Tue 6/27/23	Tue 6/27/23	[Task Bar]																											
3	Mobilization/Owner Coordination	Wed 6/28/23	Tue 7/25/23	[Task Bar]																											
4	Boundary Survey; Finalize Sampling Locations	Mon 8/21/23	Fri 10/13/23	[Task Bar]																											
5	Soil Sampling, Monitoring Wells, Groundwater Sampling	Mon 1/8/24	Mon 5/19/25								[Task Bar]																				
6	Utility Clearance; Soil Sampling	Mon 1/8/24	Fri 3/8/24	[Task Bar]																											
7	Soil Sample Analysis/Validation/DUSR Preparation	Mon 3/11/24	Fri 5/24/24	[Task Bar]																											
8	Draft Soil DUSR to NYSDEC	Fri 5/24/24	Fri 5/24/24	[Task Bar]																											
9	NYSDEC Review Soil DUSR	Mon 5/27/24	Fri 7/5/24	[Task Bar]																											
10	Finalize Soil DUSR	Mon 7/8/24	Fri 7/26/24	[Task Bar]																											
11	Submittal of Soil Data to Property Owners	Mon 7/29/24	Fri 9/6/24	[Task Bar]																											
12	Groundwater Sampling Plan Preparation, if necessary	Mon 7/29/24	Fri 8/23/24	[Task Bar]																											
13	NYSDEC Review of Groundwater Sampling Plan	Mon 8/26/24	Fri 10/4/24	[Task Bar]																											
14	Monitoring Well Installation/Groundwater Sampling	Mon 10/7/24	Fri 11/15/24	[Task Bar]																											
15	Groundwater Sample Analysis/Validation/DUSR Preparation	Mon 11/18/24	Fri 1/31/25	[Task Bar]																											
16	Draft Groundwater DUSR to NYSDEC	Fri 1/31/25	Fri 1/31/25	[Task Bar]																											
17	NYSDEC Review Groundwater DUSR	Mon 2/3/25	Fri 3/14/25	[Task Bar]																											
18	Finalize Groundwater DUSR	Mon 3/17/25	Fri 4/4/25	[Task Bar]																											
19	Submittal of Groundwater Data to Property Owners	Mon 4/7/25	Mon 5/19/25	[Task Bar]																											
20	Sediment and Surface Water	Mon 4/22/24	Wed 1/8/25								[Task Bar]																				
21	Sediment and Surface Water Sampling	Mon 4/22/24	Fri 6/21/24	[Task Bar]																											
22	Sediment and Surface Water Sample Analysis/Validation/DUSR Preparation	Mon 6/24/24	Fri 9/6/24	[Task Bar]																											
23	Draft Sediment and Surface Water DUSR to NYSDEC	Mon 9/9/24	Mon 9/9/24	[Task Bar]																											
24	NYSDEC Review Sediment and Surface Water DUSR	Tue 9/10/24	Mon 10/21/24	[Task Bar]																											
25	Finalize Sediment and Surface Water DUSR	Tue 10/22/24	Tue 11/12/24	[Task Bar]																											
26	Submittal of Sediment and Surface Water Data to Property Owners	Wed 11/13/24	Wed 1/8/25	[Task Bar]																											
27	Characterization Report	Mon 4/7/25	Fri 10/31/25								[Task Bar]																				
28	Prepare Draft Characterization Report	Mon 4/7/25	Fri 6/27/25	[Task Bar]																											
29	Draft to NYSDEC	Fri 6/27/25	Fri 6/27/25	[Task Bar]																											
30	NYSDEC Comments	Mon 6/30/25	Fri 8/8/25	[Task Bar]																											
31	Prepare Final Characterization Report	Mon 8/11/25	Fri 10/31/25	[Task Bar]																											
32	Submittal of Final Characterization Report	Fri 10/31/25	Fri 10/31/25	[Task Bar]																											

21 Sediment and Surface Water Sampling

Sediment and surface water sampling will be performed when conditions in Post Creek are safe (e.g. free of ice, low water).



Integral Engineering, P.C.
31 West 34th Street
Suite 7196
New York, NY 10001

telephone: 212.962.4303
www.integral-corp.com

PROGRESS REPORT

To:	Robert Strang, E.I.T., NYSDEC
From:	Jeffrey Marsh, P.E.
Subject:	Post Creek Site Characterization
Reporting Period:	February 12–16, 2024
Integral Project No.:	EF1049
NYSDEC Project No.:	851053

ACTIVITIES PERFORMED

Site characterization fieldwork was performed February 12–16, 2024, in accordance with the New York State Department of Environmental Conservation (NYSDEC)-approved Site Characterization Work Plan. A summary of the work completed is as follows:

- Sampling and logging of SS-3, SS-4, SS-5, SS-6, SS-8, SS-9, SS-10, SS-11, SS-12, SS-13, SS-14, SS-15, SS-16, SS-17, SS-18, SS-19, SS-20, SS-21, SS-22, SS-23, SS-24, SS-25, SS-26, SS-27, and SS-28
- Sampling and logging of SB-9, SB-10, SB-11, and SB-12.

WORK PLAN MODIFICATIONS

Sample location SS-13 was moved because the original sample location was within the paved entry gate area of 3656 State Route 414, and work at the original location would have impacted business operations of the property. The revised sample location is in a grassy area approximately 15 ft northwest of the originally proposed location.

AIR MONITORING RESULTS

Air monitoring was performed in accordance with the NYSDEC-approved Community Air Monitoring Plan. Data were collected with a DustTrak and photoionization detector unit

via telemetry and backed up with manual readings in 30-minute increments. Data collected during this work are attached.

An instantaneous particulate action level exceedance occurred on February 12, 2024, at 1:05 p.m. for approximately 8 seconds, as described via email notification to NYSDEC on February 13, 2024. This alarm condition occurred concurrent with delivery of a roll off container and resolved without the need for corrective measures.

UPCOMING ACTIVITIES AND SCHEDULE

Site characterization activities will continue during the week of February 19, 2024. Surface water and sediment sampling are scheduled for April 2024, and monitoring well installation and groundwater sampling are scheduled for October 2024, in accordance with the schedule provided to NYSDEC on February 5, 2024.

Post Creek, Highway 414, Corning NY (NYSDEC Project #851053)
Air Monitoring Results - February 12, 2024

Time	Downwind		Upwind	
	Mass Concentration (mg/m ³) ^a	PID (ppm)	Mass Concentration (mg/m ³) ^a	PID (ppm)
Feb 12 2024 11:10:00 AM	0.019	0	0.016	0
Feb 12 2024 11:20:00 AM	0.018	0	0.017	0
Feb 12 2024 11:30:00 AM	0.017	0	0.016	0
Feb 12 2024 11:40:00 AM	0.016	0	0.015	0
Feb 12 2024 11:50:00 AM	0.015	0	0.013	0
Feb 12 2024 12:00:00 PM	0.015	0	0.013	0
Feb 12 2024 12:10:00 PM	0.017	0	0.014	0
Feb 12 2024 12:20:00 PM	0.015	0	0.014	0
Feb 12 2024 12:30:00 PM	0.015	0	0.014	0
Feb 12 2024 12:40:00 PM	0.016	0	0.014	0
Feb 12 2024 12:50:00 PM	0.015	0	0.013	0
Feb 12 2024 1:00:00 PM	0.015	0	0.014	0
Feb 12 2024 1:05:00 PM	0.317 ^b	0 ^b	0.017 ^b	0 ^b
Feb 12 2024 1:10:00 PM	0.014	0	0.018	0
Feb 12 2024 1:20:00 PM	0.013	0	0.013	0
Feb 12 2024 1:30:00 PM	0.013	0	0.012	0
Feb 12 2024 1:40:00 PM	0.013	0	0.012	0
Feb 12 2024 1:50:00 PM	0.013	0	0.012	0
Feb 12 2024 2:00:00 PM	0.013	0	0.012	0
Feb 12 2024 2:10:00 PM	0.013	0	0.012	0
Feb 12 2024 2:20:00 PM	0.012	0	0.012	0
Feb 12 2024 2:30:00 PM	0.012	0	0.012	0
Feb 12 2024 2:40:00 PM	0.012	0	0.011	0
Feb 12 2024 2:50:00 PM	0.012	0	0.011	0
Feb 12 2024 3:00:00 PM	0.012	0	0.011	0
Feb 12 2024 3:10:00 PM	0.012	0	0.01	0 ^c
Feb 12 2024 3:20:00 PM	0.011	0	0.009	0
Feb 12 2024 3:30:00 PM	0.01	0	0.008	0
Feb 12 2024 3:40:00 PM	0.012	0	0.008	0 ^c
Feb 12 2024 3:50:00 PM	0.009	0	0.007	0
Feb 12 2024 4:00:00 PM	0.008	0	0.007	0 ^c

Notes:

CAMP = Community Air Monitoring Plan

NYSDEC = New York State Department of Environmental Conservation

PID = photoionization detector

ppm = parts per million

VOC = volatile organic compound

^a CAMP limits are defined as follows: 100 µg/m³ (0.1 mg/m³) sustained for 15 minutes or 150 µg/m³ (0.1 mg/m³) instantaneous greater than background for particulates; and at 5 ppm above background sustained for 15 minutes, >5 ppm but <25 ppm above background sustained for 15 minutes, and >25 ppm above background instantaneous for VOCs.

^b Particulate and VOC values presented for the subject time represent the maximum CAMP exceedance that occurred over an 8-second interval at 1:05 PM EST.

^c Manual readings are provided for particulates and VOCs at the subject time. Characterization activities and drilling ended at approximately 4:00 PM EST.

Post Creek, Highway 414, Corning NY (NYSDEC Project #851053)
Air Monitoring Results - February 13, 2024

Time	Downwind		Upwind	
	Mass Concentration (mg/m ³) ^a	PID (ppm)	Mass Concentration (mg/m ³) ^a	PID (ppm)
Feb 13 2024 9:00:00 AM	0.014	0	0.014	0
Feb 13 2024 9:10:00 AM	0.013	0	0.014	0
Feb 13 2024 9:20:00 AM	0.013	0	0.013	0
Feb 13 2024 9:30:00 AM	0.012	0	0.013	0
Feb 13 2024 9:40:00 AM	0.012	0	0.012	0
Feb 13 2024 9:50:00 AM	0.01	0	0.011	0
Feb 13 2024 10:00:00 AM	0.009	0	0.01	0
Feb 13 2024 10:10:00 AM	0.009	0	0.01	0
Feb 13 2024 10:20:00 AM	0.009	0	0.01	0
Feb 13 2024 10:30:00 AM	0.009	0	0.01	0
Feb 13 2024 10:40:00 AM	0.008	0	0.009	0
Feb 13 2024 10:50:00 AM	0.008	0	0.009	0
Feb 13 2024 11:00:00 AM	0.008	0	0.01	0
Feb 13 2024 11:10:00 AM	0.007	0	0.008	0
Feb 13 2024 11:20:00 AM	0.007	0	0.008	0
Feb 13 2024 11:30:00 AM	0.006	0	0.008	0
Feb 13 2024 11:40:00 AM	0.007	0	0.008	0
Feb 13 2024 11:50:00 AM	0.007	0	0.008	0
Feb 13 2024 12:00:00 PM	0.008	0	0.009	0
Feb 13 2024 12:10:00 PM	0.008	0	0.01	0
Feb 13 2024 12:20:00 PM	0.01	0	0.01	0
Feb 13 2024 12:30:00 PM	0.009	0	0.011	0
Feb 13 2024 12:40:00 PM	0.011	0	0.011	0
Feb 13 2024 12:50:00 PM	0.01	0	0.012	0
Feb 13 2024 1:00:00 PM	0.015	0	0.015	0
Feb 13 2024 1:10:00 PM	0.016	0	0.017	0
Feb 13 2024 1:20:00 PM	0.015	0	0.016	0
Feb 13 2024 1:30:00 PM	0.013	0	0.014	0
Feb 13 2024 1:40:00 PM	0.013	0	0.014	0
Feb 13 2024 1:50:00 PM	0.012	0.001	0.013	0
Feb 13 2024 2:00:00 PM	0.01	0.003	0.012	0
Feb 13 2024 2:10:00 PM	0.01	0.003	0.011	0
Feb 13 2024 2:20:00 PM	0.01	0.001	0.012	0
Feb 13 2024 2:30:00 PM	0.011	0.001	0.013	0
Feb 13 2024 2:40:00 PM	0.012	0	0.014	0
Feb 13 2024 2:50:00 PM	0.012	0.001	0.014	0
Feb 13 2024 3:00:00 PM	0.013	0	0.015	0
Feb 13 2024 3:10:00 PM	0.014	0.002	0.015	0
Feb 13 2024 3:20:00 PM	0.013	0.001	0.015	0
Feb 13 2024 3:30:00 PM	0.014	0.004	0.015	0
Feb 13 2024 3:40:00 PM	0.015	0.002	0.016	0

Notes:

CAMP = Community Air Monitoring Plan

NYSDEC = New York State Department of Environmental Conservation

PID = photoionization detector

ppm = parts per million

VOC = volatile organic compound

^a CAMP limits are defined as follows: 100 µg/m³ (0.1 mg/m³) sustained for 15 minutes or 150 µg/m³ (0.1 mg/m³) instantaneous greater than background for particulates; and at 5 ppm above background sustained for 15 minutes, >5 ppm but <25 ppm above background sustained for 15 minutes, and >25 ppm above background instantaneous for VOCs.

Post Creek, Highway 414, Corning NY (NYSDEC Project #851053)
Air Monitoring Results - February 14, 2024

Time	Downwind		Upwind	
	Mass Concentration (mg/m ³) ^a	PID (ppm)	Mass Concentration (mg/m ³) ^a	PID (ppm)
Feb 14 2024 9:10:00 AM	0.006	0	0.004	0
Feb 14 2024 9:20:00 AM	0.005	0	0.002	0
Feb 14 2024 9:30:00 AM	0.006	0	0.001	0
Feb 14 2024 9:40:00 AM	0.006	0	0.002	0
Feb 14 2024 9:50:00 AM	0.006	0	0.003	0
Feb 14 2024 10:00:00 AM	0.006	0	0.002	0
Feb 14 2024 10:10:00 AM	0.005	0.005	0.003	0
Feb 14 2024 10:20:00 AM	0.005	0.009	0.003	0
Feb 14 2024 10:30:00 AM	0.005	0.01	0.002	0
Feb 14 2024 10:40:00 AM	0.005	0.01	0.002	0
Feb 14 2024 10:50:00 AM	0.005	0.012	0.002	0
Feb 14 2024 11:00:00 AM	0.004	0.01	0.002	0
Feb 14 2024 11:10:00 AM	0.004	0.008	0.002	0
Feb 14 2024 11:20:00 AM	0.004	0.007	0.002	0
Feb 14 2024 11:30:00 AM	0.004	0.011	0.002	0
Feb 14 2024 11:40:00 AM	0.003	0.016	0.002	0
Feb 14 2024 11:50:00 AM	0.003	0.011	0.001	0
Feb 14 2024 12:00:00 PM	0.003	0.008	0.001	0
Feb 14 2024 12:10:00 PM	0.003	0.008	0.002	0
Feb 14 2024 12:20:00 PM	0.003	0.01	0.001	0
Feb 14 2024 12:30:00 PM	0.003	0.009	0.001	0
Feb 14 2024 12:40:00 PM	0.003	0.009	0.001	0
Feb 14 2024 12:50:00 PM	0.003	0.007	0.001	0
Feb 14 2024 1:00:00 PM	0.003	0.01	0.001	0
Feb 14 2024 1:10:00 PM	0.004	0.012	0.001	0
Feb 14 2024 1:20:00 PM	0.004	0.017	0.001	0
Feb 14 2024 1:30:00 PM	0.004	0.018	0.001	0
Feb 14 2024 1:40:00 PM	0.004	0.02	0.001	0
Feb 14 2024 1:50:00 PM	0.004	0.023	0.001	0
Feb 14 2024 2:00:00 PM	0.004	0.026	0.001	0
Feb 14 2024 2:10:00 PM	0.004	0.025	0.001	0
Feb 14 2024 2:20:00 PM	0.004	0.026	0.001	0
Feb 14 2024 2:30:00 PM	0.004	0.029	0.001	0
Feb 14 2024 2:40:00 PM	0.005	0.03	0.002	0
Feb 14 2024 2:50:00 PM	0.006	0.029	0.001	0
Feb 14 2024 3:00:00 PM	0.005	0.028	0.002	0
Feb 14 2024 3:10:00 PM	0.005	0.029	0.002	0
Feb 14 2024 3:20:00 PM	0.005	0.033	0.002	0
Feb 14 2024 3:30:00 PM	0.005	0.034	0.002	0
Feb 14 2024 3:40:00 PM	0.005	0.035	0.002	0
Feb 14 2024 3:50:00 PM	0.006	0.035	0.002	0
Feb 14 2024 4:00:00 PM	0.006	0.036	0.002	0
Feb 14 2024 4:10:00 PM	0.006	0.036	0.002	0

CAMP = Community Air Monitoring Plan

NYSDEC = New York State Department of Environmental Conservation

PID = photoionization detector

ppm = parts per million

VOC = volatile organic compound

^a CAMP limits are defined as follows: 100 µg/m³ (0.1 mg/m³) sustained for 15 minutes or 150 µg/m³ (0.1 mg/m³) instantaneous greater than background for particulates; and at 5 ppm above background sustained for 15 minutes, >5 ppm but <25 ppm above background sustained for 15 minutes, and >25 ppm above background instantaneous for VOCs.

Post Creek, Highway 414, Corning NY (NYSDEC Project #851053)
Air Monitoring Results - February 15, 2024

Time	Downwind		Upwind	
	Mass Concentration (mg/m ³) ^a	PID (ppm)	Mass Concentration (mg/m ³) ^a	PID (ppm)
Feb 15 2024 8:40:00 AM	0.015	0	0	0
Feb 15 2024 8:50:00 AM	0.014	0	0.012	0
Feb 15 2024 9:00:00 AM	0.013	0	0.012	0
Feb 15 2024 9:10:00 AM	0.014	0.006	0.014	0
Feb 15 2024 9:20:00 AM	0.016	0.02	0.015	0
Feb 15 2024 9:30:00 AM	0.017	0.028	0.016	0
Feb 15 2024 9:40:00 AM	0.019	0.034	0.017	0
Feb 15 2024 9:50:00 AM	0.019	0.04	0.017	0
Feb 15 2024 10:00:00 AM	0.02	0.048	0.017	0
Feb 15 2024 10:10:00 AM	0.018	0.055	0.016	0
Feb 15 2024 10:20:00 AM	0.017	0.06	0.015	0
Feb 15 2024 10:30:00 AM	0.016	0.065	0.014	0
Feb 15 2024 10:40:00 AM	0.015	0.071	0.013	0
Feb 15 2024 10:50:00 AM	0.014	0.076	0.013	0
Feb 15 2024 11:00:00 AM	0.014	0.077	0.011	0
Feb 15 2024 11:10:00 AM	0.013	0.079	0.011	0
Feb 15 2024 11:20:00 AM	0.013	0.082	0.011	0
Feb 15 2024 11:30:00 AM	0.013	0.086	0.011	0
Feb 15 2024 11:40:00 AM	0.013	0.088	0.011	0
Feb 15 2024 11:50:00 AM	0.013	0.092	0.011	0
Feb 15 2024 12:00:00 PM	0.013	0.093	0.011	0
Feb 15 2024 12:10:00 PM	0.012	0.097	0.011	0
Feb 15 2024 12:20:00 PM	0.012	0.099	0.012	0
Feb 15 2024 12:30:00 PM	0.012	0.102	0.011	0
Feb 15 2024 12:40:00 PM	0.012	0.105	0.011	0
Feb 15 2024 12:50:00 PM	0.012	0.102	0.011	0
Feb 15 2024 1:00:00 PM	0.012	0.099	0.011	0
Feb 15 2024 1:10:00 PM	0.011	0.098	0.011	0
Feb 15 2024 1:20:00 PM	0.011	0.099	0.011	0
Feb 15 2024 1:30:00 PM	0.01	0.101	0.01	0
Feb 15 2024 1:40:00 PM	0.01	0.101	0.009	0
Feb 15 2024 1:50:00 PM	0.01	0.099	0.009	0
Feb 15 2024 2:00:00 PM	0.009	0.098	0.008	0
Feb 15 2024 2:10:00 PM	0.009	0.1	0.008	0
Feb 15 2024 2:20:00 PM	0.009	0.103	0.008	0
Feb 15 2024 2:30:00 PM	0.009	0.102	0.008	0
Feb 15 2024 2:40:00 PM	0.009	0.101	0.008	0
Feb 15 2024 2:50:00 PM	0.009	0.103	0.008	0
Feb 15 2024 3:00:00 PM	0.009	0.105	0.008	0
Feb 15 2024 3:10:00 PM	0.009	0.107	0.009	0
Feb 15 2024 3:20:00 PM	0.01	0.11	0.01	0
Feb 15 2024 3:30:00 PM	0.01	0.112	0.01	0
Feb 15 2024 3:40:00 PM	0.011	0.113	0.01	0
Feb 15 2024 3:50:00 PM	0.012	0.113	0.011	0
Feb 15 2024 4:00:00 PM	0.013	0.112	0.012	0
Feb 15 2024 4:10:00 PM	0.015	0.113	0.013	0

CAMP = Community Air Monitoring Plan

NYSDEC = New York State Department of Environmental Conservation

PID = photoionization detector

ppm = parts per million

VOC = volatile organic compound

^a CAMP limits are defined as follows: 100 µg/m³ (0.1 mg/m³) sustained for 15 minutes or 150 µg/m³ (0.1 mg/m³) instantaneous greater than background for particulates; and at 5 ppm above background sustained for 15 minutes, >5 ppm but <25 ppm above background sustained for 15 minutes, and >25 ppm above background instantaneous for VOCs.

Post Creek, Highway 414, Corning NY (NYSDEC Project #851053)
Air Monitoring Results - February 16, 2024

Time	Downwind		Upwind	
	Mass Concentration (mg/m ³) ^a	PID (ppm)	Mass Concentration (mg/m ³) ^a	PID (ppm)
Feb 16 2024 8:50:00 AM	0.004	0	0.003	0
Feb 16 2024 9:00:00 AM	0.004	0	0.003	0
Feb 16 2024 9:10:00 AM	0.004	0	0.003	0
Feb 16 2024 9:20:00 AM	0.004	0	0.002	0.001
Feb 16 2024 9:30:00 AM	0.004	0	0.003	0.001
Feb 16 2024 9:40:00 AM	0.004	0	0.002	0
Feb 16 2024 9:50:00 AM	0.003	0	0.003	0
Feb 16 2024 10:00:00 AM	0.003	0	0.003	0
Feb 16 2024 10:10:00 AM	0.003	0	0.002	0
Feb 16 2024 10:20:00 AM	0.003	0	0.002	0
Feb 16 2024 10:30:00 AM	0.003	0	0.004	0
Feb 16 2024 10:40:00 AM	0.003	0	0.002	0
Feb 16 2024 10:50:00 AM	0.002	0	0.002	0
Feb 16 2024 11:00:00 AM	0.002	0	0.002	0
Feb 16 2024 11:10:00 AM	0.002	0	0.002	0
Feb 16 2024 11:20:00 AM	0.002	0	0.002	0
Feb 16 2024 11:30:00 AM	0.002	0	0.002	0
Feb 16 2024 11:40:00 AM	0.002	0	0.001	0
Feb 16 2024 11:50:00 AM	0.002	0	0.002	0
Feb 16 2024 12:00:00 PM	0.002	0	0.001	0
Feb 16 2024 12:10:00 PM	0.002	0	0.001	0
Feb 16 2024 12:20:00 PM	0.002	0	0.001	0
Feb 16 2024 12:30:00 PM	0.002	0	0.001	0
Feb 16 2024 12:40:00 PM	0.002	0	0.001	0
Feb 16 2024 12:50:00 PM	0.002	0	0.002	0
Feb 16 2024 1:00:00 PM	0.002	0	0.001	0
Feb 16 2024 1:10:00 PM	0.002	0	0.001	0
Feb 16 2024 1:20:00 PM	0.002	0	0.001	0
Feb 16 2024 1:30:00 PM	0.002	0	0.002	0

CAMP = Community Air Monitoring Plan

NYSDEC = New York State Department of Environmental Conservation

PID = photoionization detector

ppm = parts per million

VOC = volatile organic compound

^a CAMP limits are defined as follows: 100 µg/m³ (0.1 mg/m³) sustained for 15 minutes or 150 µg/m³ (0.1 mg/m³) instantaneous greater than background for particulates; and at 5 ppm above background sustained for 15 minutes, >5 ppm but <25 ppm above background sustained for 15 minutes, and >25 ppm above background instantaneous for VOCs.



Integral Engineering, P.C.
31 West 34th Street
Suite 7196
New York, NY 10001

telephone: 212.962.4303
www.integral-corp.com

PROGRESS REPORT

To: Robert Strang, E.I.T., NYSDEC
From: Jeffrey Marsh, P.E.
Subject: Post Creek Site Characterization
Reporting Period: February 19–23, 2024
Integral Project No.: EF1049
NYSDEC Project No.: 851053

ACTIVITIES PERFORMED

Site characterization fieldwork was performed February 19–23, 2024, in accordance with the New York State Department of Environmental Conservation (NYSDEC)-approved Site Characterization Work Plan. A summary of the work completed is as follows:

- Sampling and logging of SS-1, SS-2, SS-7, SS-40, and SS-41
- Sampling and logging of SB-1, SB-2, SB-3, SB-4, SB-5, SB-6, SB-7, and SB-8
- Garden sampling at tax parcel 282.00-02-039.000
- Completion of test pits TP-1 and TP-2.

WORK PLAN MODIFICATIONS

Sample location SB-3 was moved approximately 20 feet (ft) upslope to the northwest from the originally proposed sample location because of the presence of riprap on the creek bank.

In accordance with the letter provided to NYSDEC from Integral Engineering, P.C. on February 19, 2024 (Subject: Site No. 851053 Post Creek, Collecting Analytical Samples in Non-native Fill that Does Not Contain Ash, Brick, and/or Glass [non-ABG]), samples from the interval 0–2 ft below ground surface were collected from soil borings SB-1, SB-2, SB-3, SB-4, SB-5, SB-6, SB-7, and SB-8 and will be analyzed for target analyte list (TAL) metals, cyanide, and semivolatile organic compounds (SVOCs). Additionally, a 2-ft interval sample

was collected from non-ABG fill at SB-1 and SB-4 and will be analyzed for TAL metals, cyanide, and SVOCs.

AIR MONITORING RESULTS

Air monitoring was performed in accordance with the NYSDEC-approved Community Air Monitoring Plan. Data were collected with a DustTrak and photoionization detector unit via telemetry and backed up with manual readings in 30-minute increments. Data collected during this work are attached.

UPCOMING ACTIVITIES AND SCHEDULE

Surface water and sediment sampling are scheduled for April 2024, and monitoring well installation and groundwater sampling are scheduled for October 2024, in accordance with the schedule provided to NYSDEC on February 5, 2024.

**Post Creek, Highway 414, Corning NY (NYSDEC Project #851053)
Air Monitoring Results - February 19, 2024**

Time	Downwind		Upwind	
	Mass Concentration (mg/m ³) ^a	PID (ppm)	Mass Concentration (mg/m ³) ^a	PID (ppm)
Feb 19 2024 10:10:00 AM	0.003	0	0.002	0
Feb 19 2024 10:20:00 AM	0.003	0	0.003	0
Feb 19 2024 10:30:00 AM	0.002	0	0.003	0
Feb 19 2024 10:40:00 AM	0.002	0	0.003	0
Feb 19 2024 10:50:00 AM	0.003	0	0.002	0
Feb 19 2024 11:00:00 AM	0.002	0	0.002	0
Feb 19 2024 11:10:00 AM	0.001	0	0.002	0
Feb 19 2024 11:20:00 AM	0.001	0	0.003	0
Feb 19 2024 11:30:00 AM	0.001	0	0.001	0
Feb 19 2024 11:40:00 AM	0.001	0	0.001	0
Feb 19 2024 11:50:00 AM	0.001	0	0.003	0
Feb 19 2024 12:00:00 PM	0.001	0	0.002	0
Feb 19 2024 12:10:00 PM	0.001	0	0.001	0
Feb 19 2024 12:20:00 PM	0.001	0	0.001	0
Feb 19 2024 12:30:00 PM	0.001	0	0.004	0
Feb 19 2024 12:40:00 PM	0.001	0	0.001	0
Feb 19 2024 12:50:00 PM	0.001	0	0.001	0
Feb 19 2024 1:00:00 PM	0.001	0	0.001	0
Feb 19 2024 1:10:00 PM	0.001	0	0.002	0
Feb 19 2024 1:20:00 PM	0.003	0	0.001	0
Feb 19 2024 1:30:00 PM	0.001	0	0.001	0
Feb 19 2024 1:40:00 PM	0.001	0	0.001	0
Feb 19 2024 1:50:00 PM	0.001	0	0.001	0
Feb 19 2024 2:00:00 PM	0.001	0	0	0
Feb 19 2024 2:10:00 PM	0.001	0	0	0
Feb 19 2024 2:20:00 PM	0.001	0	0	0
Feb 19 2024 2:30:00 PM	0.001	0	0	0
Feb 19 2024 2:40:00 PM	0.001	0	0.001	0
Feb 19 2024 2:50:00 PM	0.001	0	0	0
Feb 19 2024 3:00:00 PM	0.001	0	0.001	0
Feb 19 2024 3:10:00 PM	0.001	0	0.001	0
Feb 19 2024 3:20:00 PM	0.001	0	0.001	0
Feb 19 2024 3:30:00 PM	0.001	0	0.002	0
Feb 19 2024 3:40:00 PM	0.001	0	0.001	0
Feb 19 2024 3:50:00 PM	0.001	0	0.001	0
Feb 19 2024 4:00:00 PM	0.002	0	0.001	0
Feb 19 2024 4:10:00 PM	0.002	0	0.001	0
Feb 19 2024 4:20:00 PM	0.003	0	0.004	0

Notes:

- CAMP = Community Air Monitoring Plan
- NYSDEC = New York State Department of Environmental Conservation
- PID = photoionization detector
- ppm = parts per million
- VOC = volatile organic compound

^a CAMP limits are defined as follows: 100 µg/m³ (0.1 mg/m³) sustained for 15 minutes or 150 µg/m³ (0.1 mg/m³) instantaneous greater than background for particulates; and at 5 ppm above background sustained for 15 minutes, >5 ppm but <25 ppm above background sustained for 15 minutes, and >25 ppm above background instantaneous for VOCs.

**Post Creek, Highway 414, Corning NY (NYSDEC Project #851053)
Air Monitoring Results - February 20, 2024**

Time	Downwind		Upwind	
	Mass Concentration (mg/m ³) ^a	PID (ppm)	Mass Concentration (mg/m ³) ^a	PID (ppm)
Feb 20 2024 9:00:00 AM	0.014	0	0.013	0
Feb 20 2024 9:10:00 AM	0.015	0	0.013	0
Feb 20 2024 9:20:00 AM	0.016	0	0.014	0
Feb 20 2024 9:30:00 AM	0.016	0	0.015	0
Feb 20 2024 9:40:00 AM	0.016	0	0.015	0
Feb 20 2024 9:50:00 AM	0.015	0.002	0.016	0
Feb 20 2024 10:00:00 AM	0.015	0	0.018	0.002
Feb 20 2024 10:10:00 AM	0.015	0	0.016	0
Feb 20 2024 10:20:00 AM	0.014	0	0.018	0
Feb 20 2024 10:30:00 AM	0.013	0	0.015	0
Feb 20 2024 10:40:00 AM	0.013	0	0.014	0
Feb 20 2024 10:50:00 AM	0.012	0	0.014	0
Feb 20 2024 11:00:00 AM	0.012	0	0.014	0
Feb 20 2024 11:10:00 AM	0.011	0	0.012	0
Feb 20 2024 11:20:00 AM	0.01	0	0.011	0
Feb 20 2024 11:30:00 AM	0.009	0	0.01	0
Feb 20 2024 11:40:00 AM	0.009	0	0.01	0
Feb 20 2024 11:50:00 AM	0.008	0	0.01	0
Feb 20 2024 12:00:00 PM	0.008	0	0.008	0
Feb 20 2024 12:10:00 PM	0.007	0	0.007	0
Feb 20 2024 12:20:00 PM	0.006	0	0.006	0
Feb 20 2024 12:30:00 PM	0.007	0	0.007	0
Feb 20 2024 12:40:00 PM	0.007	0	0.007	0
Feb 20 2024 12:50:00 PM	0.008	0	0.007	0
Feb 20 2024 1:00:00 PM	0.008	0	0.008	0
Feb 20 2024 1:10:00 PM	0.008	0	0.008	0.002
Feb 20 2024 1:20:00 PM	0.009	0	0.008	0
Feb 20 2024 1:30:00 PM	0.013	0	0.008	0
Feb 20 2024 1:40:00 PM	0.01	0.016	0.008	0
Feb 20 2024 1:50:00 PM	0.01	0.002	0.008	0
Feb 20 2024 2:00:00 PM	0.01	0	0.008	0
Feb 20 2024 2:10:00 PM	0.01	0	0.009	0
Feb 20 2024 2:20:00 PM	0.01	0	0.008	0
Feb 20 2024 2:30:00 PM	0.01	0	0.009	0
Feb 20 2024 2:40:00 PM	0.009	0	0.008	0
Feb 20 2024 2:50:00 PM	0.01	0	0.009	0
Feb 20 2024 3:00:00 PM	0.01	0	0.009	0
Feb 20 2024 3:10:00 PM	0.009	0	0.009	0
Feb 20 2024 3:20:00 PM	0.01	0	0.009	0
Feb 20 2024 3:30:00 PM	0.011	0	0.009	0
Feb 20 2024 3:40:00 PM	0.01	0	0.009	0
Feb 20 2024 3:50:00 PM	0.009	0	0.009	0
Feb 20 2024 4:00:00 PM	0.009	0	0.009	0
Feb 20 2024 4:10:00 PM	0.009	0	0.008	0
Feb 20 2024 4:20:00 PM	0.009	0	0.008	0
Feb 20 2024 4:30:00 PM	0.009	0	0.008	0
Feb 20 2024 4:40:00 PM	0.009	0	0.008	0
Feb 20 2024 4:50:00 PM	0.009	0	0.008	0

Notes:

CAMP = Community Air Monitoring Plan
 NYSDEC = New York State Department of Environmental Conservation
 PID = photoionization detector
 ppm = parts per million
 VOC = volatile organic compound

^a CAMP limits are defined as follows: 100 µg/m³ (0.1 mg/m³) sustained for 15 minutes or 150 µg/m³ (0.1 mg/m³) instantaneous greater than background for particulates; and at 5 ppm above background sustained for 15 minutes, >5 ppm but <25 ppm above background sustained for 15 minutes, and >25 ppm above background instantaneous for VOCs.

**Post Creek, Highway 414, Corning NY (NYSDEC Project #851053)
Air Monitoring Results - February 21, 2024**

Time	Downwind		Upwind	
	Mass Concentration (mg/m ³) ^a	PID (ppm)	Mass Concentration (mg/m ³) ^a	PID (ppm)
Feb 21 2024 9:40:00 AM	0.042	0.034	0.03	0
Feb 21 2024 9:50:00 AM	0.039	0.059	0.027	0
Feb 21 2024 10:00:00 AM	0.037	0.083	0.025	0
Feb 21 2024 10:10:00 AM	0.035	0.105	0.024	0
Feb 21 2024 10:20:00 AM	0.032	0.124	0.023	0
Feb 21 2024 10:30:00 AM	0.03	0.143	0.021	0
Feb 21 2024 10:40:00 AM	0.028	0.161	0.019	0
Feb 21 2024 10:50:00 AM	0.027	0.181	0.018	0
Feb 21 2024 11:00:00 AM	0.029	0.183	0.021	0
Feb 21 2024 11:10:00 AM	0.026	0.183	0.02	0
Feb 21 2024 11:20:00 AM	0.025	0.193	0.02	0
Feb 21 2024 11:30:00 AM	0.025	0.201	0.019	0
Feb 21 2024 11:40:00 AM	0.023	0.205	0.018	0
Feb 21 2024 11:50:00 AM	0.023	0.21	0.018	0
Feb 21 2024 12:00:00 PM	0.025	0.21	0.017	0
Feb 21 2024 12:10:00 PM	0.022	0.207	0.016	0
Feb 21 2024 12:20:00 PM	0.022	0.208	0.017	0
Feb 21 2024 12:30:00 PM	0.021	0.216	0.016	0
Feb 21 2024 12:40:00 PM	0.02	0.217	0.015	0
Feb 21 2024 12:50:00 PM	0.019	0.219	0.015	0
Feb 21 2024 1:00:00 PM	0.024	0.194	0.016	0
Feb 21 2024 1:10:00 PM	0.02	0.166	0.016	0
Feb 21 2024 1:20:00 PM	0.021	0.172	0.015	0
Feb 21 2024 1:30:00 PM	0.023	0.173	0.016	0
Feb 21 2024 1:40:00 PM	0.022	0.17	0.017	0
Feb 21 2024 1:50:00 PM	0.02	0.169	0.016	0
Feb 21 2024 2:00:00 PM	0.024	0.169	0.016	0
Feb 21 2024 2:10:00 PM	0.019	0.172	0.015	0
Feb 21 2024 2:20:00 PM	0.021	0.153	0.016	0
Feb 21 2024 2:30:00 PM	0.019	0.156	0.016	0
Feb 21 2024 2:40:00 PM	0.018	0.17	0.014	0
Feb 21 2024 2:50:00 PM	0.019	0.166	0.015	0
Feb 21 2024 3:00:00 PM	0.018	0.167	0.014	0
Feb 21 2024 3:10:00 PM	0.018	0.171	0.013	0
Feb 21 2024 3:20:00 PM	0.018	0.17	0.014	0
Feb 21 2024 3:30:00 PM	0.018	0.169	0.014	0
Feb 21 2024 3:40:00 PM	0.018	0.167	0.015	0
Feb 21 2024 3:50:00 PM	0.02	0.166	0.014	0
Feb 21 2024 4:00:00 PM	0.019	0.163	0.013	0
Feb 21 2024 4:10:00 PM	0.018	0.162	0.013	0
Feb 21 2024 4:20:00 PM	0.019	0.159	0.013	0
Feb 21 2024 4:30:00 PM	0	0	0.013	0

Notes:

- CAMP = Community Air Monitoring Plan
- NYSDEC = New York State Department of Environmental Conservation
- PID = photoionization detector
- ppm = parts per million
- VOC = volatile organic compound

^a CAMP limits are defined as follows: 100 µg/m³ (0.1 mg/m³) sustained for 15 minutes or 150 µg/m³ (0.1 mg/m³) instantaneous greater than background for particulates; and at 5 ppm above background sustained for 15 minutes, >5 ppm but <25 ppm above background sustained for 15 minutes, and >25 ppm above background instantaneous for VOCs.

**Post Creek, Highway 414, Corning NY (NYSDEC Project #851053)
Air Monitoring Results - February 22, 2024**

Time	Downwind		Upwind	
	Mass Concentration (mg/m ³) ^a	PID (ppm)	Mass Concentration (mg/m ³) ^a	PID (ppm)
Feb 22 2024 8:50:00 AM	0.028	0	0.026	0
Feb 22 2024 9:00:00 AM	0.028	0	0.021	0
Feb 22 2024 9:10:00 AM	0.028	0	0.021	0
Feb 22 2024 9:20:00 AM	0.027	0	0.021	0
Feb 22 2024 9:30:00 AM	0.027	0.005	0.02	0
Feb 22 2024 9:40:00 AM	0.027	0.013	0.02	0
Feb 22 2024 9:50:00 AM	0.027	0.022	0.019	0
Feb 22 2024 10:00:00 AM	0.027	0.031	0.02	0
Feb 22 2024 10:10:00 AM	0.026	0.037	0.019	0
Feb 22 2024 10:20:00 AM	0.026	0.044	0.019	0
Feb 22 2024 10:30:00 AM	0.027	0.048	0.019	0
Feb 22 2024 10:40:00 AM	0.026	0.053	0.019	0
Feb 22 2024 10:50:00 AM	0.027	0.056	0.019	0
Feb 22 2024 11:00:00 AM	0.027	0.058	0.019	0
Feb 22 2024 11:10:00 AM	0.027	0.062	0.019	0
Feb 22 2024 11:20:00 AM	0.028	0.065	0.019	0
Feb 22 2024 11:30:00 AM	0.027	0.065	0.019	0
Feb 22 2024 11:40:00 AM	0.027	0.069	0.019	0
Feb 22 2024 11:50:00 AM	0.029	0.069	0.02	0
Feb 22 2024 12:00:00 PM	0.029	0.069	0.021	0
Feb 22 2024 12:10:00 PM	0.03	0.07	0.021	0
Feb 22 2024 12:20:00 PM	0.029	0.072	0.02	0
Feb 22 2024 12:30:00 PM	0.029	0.073	0.02	0
Feb 22 2024 12:40:00 PM	0.028	0.072	0.019	0
Feb 22 2024 12:50:00 PM	0.027	0.069	0.019	0
Feb 22 2024 1:00:00 PM	0.027	0.072	0.018	0
Feb 22 2024 1:10:00 PM	0.028	0.074	0.019	0
Feb 22 2024 1:20:00 PM	0.03	0.076	0.02	0
Feb 22 2024 1:30:00 PM	0.031	0.074	0.021	0
Feb 22 2024 1:40:00 PM	0.031	0.072	0.021	0
Feb 22 2024 1:50:00 PM	0.032	0.073	0.021	0
Feb 22 2024 2:00:00 PM	0.032	0.073	0.021	0
Feb 22 2024 2:10:00 PM	0.031	0.074	0.02	0
Feb 22 2024 2:20:00 PM	0.03	0.074	0.021	0

Notes:

CAMP = Community Air Monitoring Plan
 NYSDEC = New York State Department of Environmental Conservation
 PID = photoionization detector
 ppm = parts per million
 VOC = volatile organic compound

^a CAMP limits are defined as follows: 100 µg/m³ (0.1 mg/m³) sustained for 15 minutes or 150 µg/m³ (0.1 mg/m³) instantaneous greater than background for particulates; and at 5 ppm above background sustained for 15 minutes, >5 ppm but <25 ppm above background sustained for 15 minutes, and >25 ppm above background instantaneous for VOCs.

**Post Creek, Highway 414, Corning NY (NYSDEC Project #851053)
Air Monitoring Results - February 23, 2024**

Time	Downwind		Upwind	
	Mass Concentration (mg/m ³) ^a	PID (ppm)	Mass Concentration (mg/m ³) ^a	PID (ppm)
Feb 23 2024 8:50:00 AM	0.032	0	0.019	0
Feb 23 2024 9:00:00 AM	0.032	0	0.019	0
Feb 23 2024 9:10:00 AM	0.031	0	0.019	0
Feb 23 2024 9:20:00 AM	0.029	0.003	0.017	0
Feb 23 2024 9:30:00 AM	0.026	0.01	0.017	0
Feb 23 2024 9:40:00 AM	0.026	0.019	0.016	0
Feb 23 2024 9:50:00 AM	0.026	0.024	0.016	0
Feb 23 2024 10:00:00 AM	0.027	0.03	0.016	0
Feb 23 2024 10:10:00 AM	0.027	0.03	0.016	0

Notes:

- CAMP = Community Air Monitoring Plan
- NYSDEC = New York State Department of Environmental Conservation
- PID = photoionization detector
- ppm = parts per million
- VOC = volatile organic compound

^a CAMP limits are defined as follows: 100 µg/m³ (0.1 mg/m³) sustained for 15 minutes or 150 µg/m³ (0.1 mg/m³) instantaneous greater than background for particulates; and at 5 ppm above background sustained for 15 minutes, >5 ppm but <25 ppm above background sustained for 15 minutes, and >25 ppm above background instantaneous for VOCs.



Integral Engineering, P.C.
31 West 34th Street
Suite 7196
New York, NY 10001
telephone: 212.962.4303
www.integral-corp.com

PROGRESS REPORT

To:	Robert Strang, E.I.T., NYSDEC
From:	Jeffrey Marsh, P.E.
Subject:	Post Creek Site Characterization
Reporting Period:	April 22-25, 2024
Integral Project No.:	EF1049
NYSDEC Project No.:	851053

ACTIVITIES PERFORMED

Site characterization fieldwork was performed April 22–25, 2024, in accordance with the New York State Department of Environmental Conservation (NYSDEC)-approved Site Characterization Work Plan¹ and the NYSDEC-approved Survey Results and Revised Sample Locations Letter Response (Letter Response).² A summary of the work completed is as follows:

- Sampling and logging of SD-1, SD-2, SD-3, SD-4, SD-5, SD-6, SD-7, SD-8, and SD-9
- Sampling of SW-1, SW-2, SW-3, SW-4, SW-5, SW-6, SW-7, SW-8, and SW-9.

WORK PLAN MODIFICATIONS

Limited sediment was observed in Post Creek at the time of sampling. As a result, surface water and sediment sample locations were moved from the conceptual locations proposed in the NYSDEC-approved Work Plan and Letter Response, based on field conditions (Figure 1). Sample locations were moved as follows:

¹ Integral. 2020. Post Creek Characterization Work Plan, NYSDEC Project No. 851053. December 4.

² Integral. 2023. Survey Results and Revised Sample Locations Letter Response Post Creek/Highway 414 Properties Site Characterization. October 3.

Sample Location	Distance Moved (ft)
SD-1/SW-1	12.4
SD-2/SW-2	48.3
SD-3/SW-3	50.1
SD-4/SW-4	44.0
SD-5/SW-5	105
SD-6/SW-6	48.5
SD-7/SW-7	73.3
SD-8/SW-8	122
SD-9/SW-9	35.6

The 0- to 6-in. sample interval was collected at all sample locations. Due to the limited depth of sediment observed in Post Creek, the 6- to 12-in. sample interval was collected at only SD-7 and SD-9, and the 12- to 24-in. sample interval was not collected at any of the sample locations.

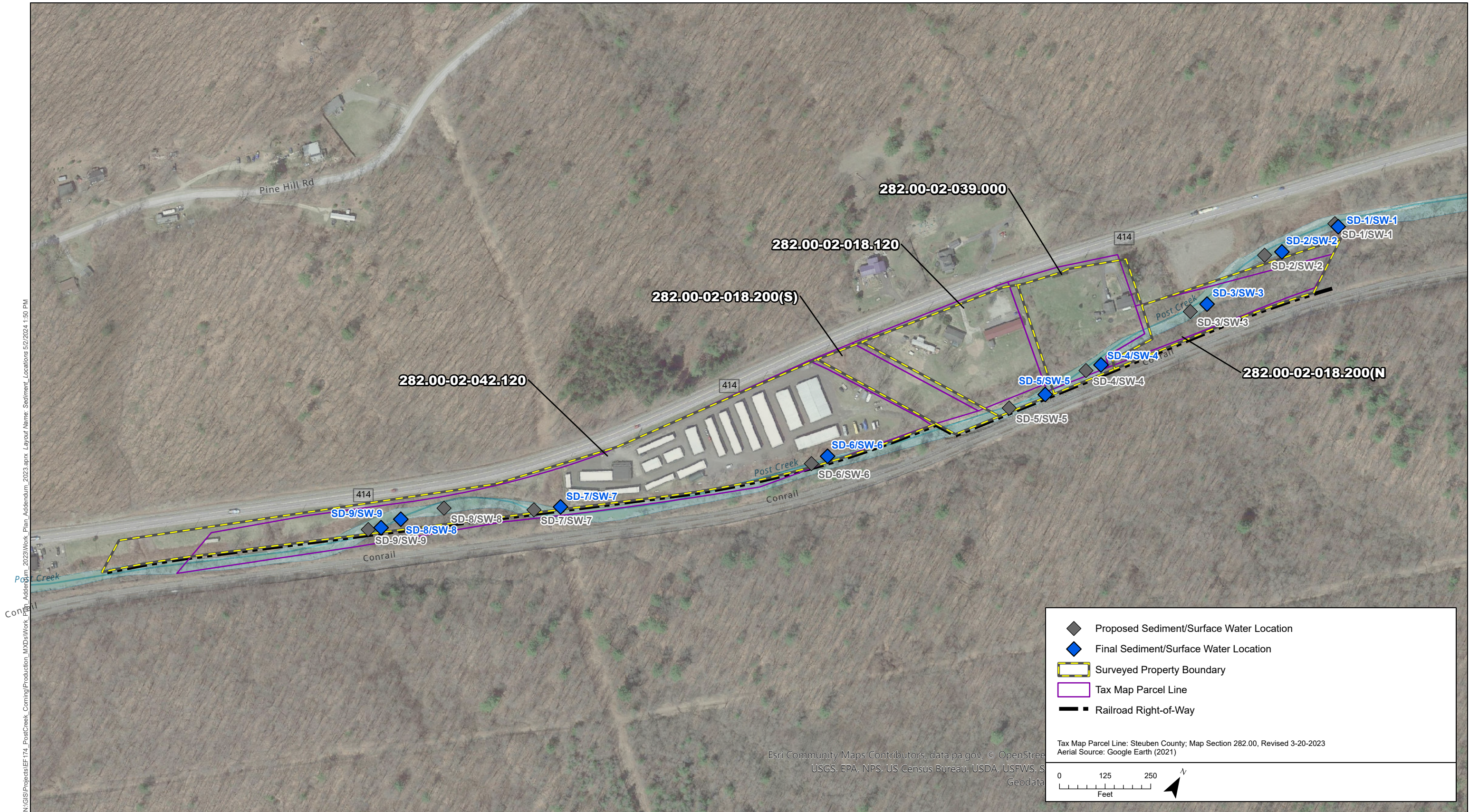
AIR MONITORING RESULTS

Air monitoring was performed in accordance with the NYSDEC-approved Community Air Monitoring Plan. Data were collected with a DustTrak and photoionization detector unit via telemetry and backed up with manual readings in 30-minute increments. Data collected during this work are attached.

UPCOMING ACTIVITIES AND SCHEDULE

Monitoring well installation and groundwater sampling are scheduled for October 2024, in accordance with the schedule provided to NYSDEC on February 5, 2024.

N:\GIS\Projects\EF174_PostCreek_ComingProduction_MXD\Work_Plan_Addendum_2023.aprx_Layout Name_Sediment_Locations 5/2/2024 1:50 PM



- ◆ Proposed Sediment/Surface Water Location
- ◆ Final Sediment/Surface Water Location
- ▭ Surveyed Property Boundary
- ▭ Tax Map Parcel Line
- ▬ Railroad Right-of-Way

Tax Map Parcel Line: Steuben County; Map Section 282.00, Revised 3-20-2023
 Aerial Source: Google Earth (2021)

0 125 250
 Feet

Esri Community Maps Contributors, data.pa.gov. © OpenStreetMap contributors, USGS, EPA, NPS, US Census Bureau, USDA, USFWS, S... Geodata



Figure 1.
Sediment and Surface Water Sampling Locations
Post Creek/Highway 414 Properties Site Characterization

Post Creek, Highway 414, Corning NY (NYSDEC Project #851053)
Air Monitoring Results - April 22, 2024

Time	Downwind		Upwind	
	Mass Concentration (mg/m ³) ^a	PID (ppm)	Mass Concentration (mg/m ³) ^a	PID (ppm)
Apr 22 2024 1:50:00 PM	0.005	0	0.005	0.066
Apr 22 2024 2:00:00 PM	0.003	0	0.004	0.081
Apr 22 2024 2:10:00 PM	0.003	0	0.003	0.101
Apr 22 2024 2:20:00 PM	0.002	0	0.003	0.113
Apr 22 2024 2:30:00 PM	0.002	0	0.003	0.122
Apr 22 2024 2:40:00 PM	0.002	0	0.003	0.126
Apr 22 2024 2:50:00 PM	0.002	0.001	0.002	0.13
Apr 22 2024 3:00:00 PM	0.005	0	0.002	0.134
Apr 22 2024 3:10:00 PM	0.001	0	0.002	0.13
Apr 22 2024 3:20:00 PM	0.001	0	0.002	0.126
Apr 22 2024 3:30:00 PM	0	0	0.001	0.125
Apr 22 2024 3:40:00 PM	0	0.001	0.001	0.123
Apr 22 2024 3:50:00 PM	0.001	0.005	0.001	0.121
Apr 22 2024 4:00:00 PM	0.001	0	0.001	0.123
Apr 22 2024 4:10:00 PM	0	0	0.001	0.123
Apr 22 2024 4:20:00 PM	0	0	0.001	0.123
Apr 22 2024 4:30:00 PM	0	0	0	0.122
Apr 22 2024 4:40:00 PM	0	0	0	0.121
Apr 22 2024 4:50:00 PM	0	0	0	0.117
Apr 22 2024 5:00:00 PM	0	0	0	0.118
Apr 22 2024 5:10:00 PM	0	0	0	0.115
Apr 22 2024 5:20:00 PM	0	0	0	0.115
Apr 22 2024 5:30:00 PM	0	0	0	0.116
Apr 22 2024 5:40:00 PM	0	0	0	0.112
Apr 22 2024 5:50:00 PM	0	0	0	0.11
Apr 22 2024 6:00:00 PM	0	0	0	0.108
Apr 22 2024 6:10:00 PM	0	0	0	0.101

Notes:

CAMP = Community Air Monitoring Plan

NYSDEC = New York State Department of Environmental Conservation

PID = photoionization detector

ppm = parts per million

VOC = volatile organic compound

^a CAMP limits are defined as follows: 100 µg/m³ (0.1 mg/m³) sustained for 15 minutes or 150 µg/m³ (0.1 mg/m³) instantaneous greater than background for particulates; and at 5 ppm above background sustained for 15 minutes, >5 ppm but <25 ppm above background sustained for 15 minutes, and >25 ppm above background instantaneous for VOCs.

**Post Creek, Highway 414, Corning NY (NYSDEC Project #851053)
Air Monitoring Results - April 23, 2024**

Time	Downwind		Upwind	
	Mass Concentration (mg/m ³) ^a	PID (ppm)	Mass Concentration (mg/m ³) ^a	PID (ppm)
Apr 23 2024 9:40:00 AM	0.01	0.011	0.006	0.116
Apr 23 2024 9:50:00 AM	0.008	0.027	0.006	0.163
Apr 23 2024 10:00:00 AM	0.006	0.052	0.006	0.197
Apr 23 2024 10:10:00 AM	0.005	0.067	0.006	0.22
Apr 23 2024 10:20:00 AM	0.004	0.084	0.005	0.234
Apr 23 2024 10:30:00 AM	0.003	0.084	0.005	0.248
Apr 23 2024 10:40:00 AM	0.003	0.082	0.005	0.261
Apr 23 2024 10:50:00 AM	0.002	0.082	0.005	0.263
Apr 23 2024 11:00:00 AM	0.001	0.089	0.005	0.271
Apr 23 2024 11:10:00 AM	0.001	0.082	0.005	0.278
Apr 23 2024 11:20:00 AM	0.001	0.08	0.005	0.282
Apr 23 2024 11:30:00 AM	0.001	0.074	0.006	0.281
Apr 23 2024 11:40:00 AM	0.001	0.054	0.005	0.275
Apr 23 2024 11:50:00 AM	0.001	0.037	0.005	0.272
Apr 23 2024 12:00:00 PM	0.001	0.029	0.005	0.27
Apr 23 2024 12:10:00 PM	0.001	0.025	0.005	0.267
Apr 23 2024 12:20:00 PM	0.001	0.029	0.005	0.264
Apr 23 2024 12:30:00 PM	0.001	0.018	0.005	0.263
Apr 23 2024 12:40:00 PM	0	0.015	0.004	0.258
Apr 23 2024 12:50:00 PM	0	0.03	0.005	0.259
Apr 23 2024 1:00:00 PM	0	0.031	0.004	0.255
Apr 23 2024 1:10:00 PM	0	0.022	0.004	0.247
Apr 23 2024 1:20:00 PM	0	0.014	0.004	0.214
Apr 23 2024 1:30:00 PM	0	0.018	0.004	0.216
Apr 23 2024 1:40:00 PM	0	0.008	0.005	0.213
Apr 23 2024 1:50:00 PM	0	0.005	0.004	0.209
Apr 23 2024 2:00:00 PM	0	0.001	0.004	0.209
Apr 23 2024 2:10:00 PM	0	0	0.004	0.204
Apr 23 2024 2:20:00 PM	0.001	0.001	0.005	0.194
Apr 23 2024 2:30:00 PM	0.001	0	0.005	0.187
Apr 23 2024 2:40:00 PM	0.001	0	0.005	0.18
Apr 23 2024 2:50:00 PM	0.001	0	0.005	0.176
Apr 23 2024 3:00:00 PM	0.001	0.001	0.005	0.179
Apr 23 2024 3:10:00 PM	0	0.002	0.005	0.179
Apr 23 2024 3:20:00 PM	0	0.006	0.005	0.18
Apr 23 2024 3:30:00 PM	0	0.021	0.004	0.183
Apr 23 2024 3:40:00 PM	0	0.041	0.005	0.182
Apr 23 2024 3:50:00 PM	0	0.034	0.005	0.176
Apr 23 2024 4:00:00 PM	0	0.018	0.005	0.173
Apr 23 2024 4:10:00 PM	0	0	0.005	0.17
Apr 23 2024 4:20:00 PM	0	0	0.005	0.161
Apr 23 2024 4:30:00 PM	0	0	0.005	0.154
Apr 23 2024 4:40:00 PM	0.001	0	0.005	0.146
Apr 23 2024 4:50:00 PM	0	0	0.005	0.142

**Post Creek, Highway 414, Corning NY (NYSDEC Project #851053)
Air Monitoring Results - April 23, 2024**

Time	Downwind		Upwind	
	Mass Concentration (mg/m ³) ^a	PID (ppm)	Mass Concentration (mg/m ³) ^a	PID (ppm)
Apr 23 2024 5:00:00 PM	0	0	0.005	0.138
Apr 23 2024 5:10:00 PM	0	0	0.005	0.133
Apr 23 2024 5:20:00 PM	0	0	0.005	0.13
Apr 23 2024 5:30:00 PM	0	0	0.005	0.129
Apr 23 2024 5:40:00 PM	0	0	0.005	0.125
Apr 23 2024 5:50:00 PM	0	0	0.005	0.123
Apr 23 2024 6:00:00 PM	0	0	0.006	0.12
Apr 23 2024 6:10:00 PM	0	0	0.005	0.118
Apr 23 2024 6:20:00 PM	0	0	0.006	0.118
Apr 23 2024 6:30:00 PM	0.001	0	0.006	0.117

Notes:

CAMP = Community Air Monitoring Plan
 NYSDEC = New York State Department of Environmental Conservation
 PID = photoionization detector
 ppm = parts per million
 VOC = volatile organic compound

^a CAMP limits are defined as follows: 100 µg/m³ (0.1 mg/m³) sustained for 15 minutes or 150 µg/m³ (0.1 mg/m³) instantaneous greater than background for particulates; and at 5 ppm above background sustained for 15 minutes, >5 ppm but <25 ppm above background sustained for 15 minutes, and >25 ppm above background instantaneous for VOCs.

**Post Creek, Highway 414, Corning NY (NYSDEC Project #851053)
Air Monitoring Results - April 24, 2024**

Time	Downwind		Upwind	
	Mass Concentration (mg/m ³) ^a	PID (ppm)	Mass Concentration (mg/m ³) ^a	PID (ppm)
Apr 24 2024 11:40:00 AM	0.003	0	0.006	0
Apr 24 2024 11:50:00 AM	0.002	0	0.005	0
Apr 24 2024 12:00:00 PM	0.001	0	0.005	0.005
Apr 24 2024 12:10:00 PM	0.001	0	0.004	0.018
Apr 24 2024 12:20:00 PM	0	0.001	0.004	0.035
Apr 24 2024 12:30:00 PM	0	0	0.004	0.043
Apr 24 2024 12:40:00 PM	0	0	0.004	0.044
Apr 24 2024 12:50:00 PM	0	0.001	0.003	0.049
Apr 24 2024 1:00:00 PM	0	0.001	0.003	0.054
Apr 24 2024 1:10:00 PM	0	0	0.003	0.05
Apr 24 2024 1:20:00 PM	0	0	0.003	0.05
Apr 24 2024 1:30:00 PM	0.002	0	0.005	0.053
Apr 24 2024 1:40:00 PM	0.002	0	0.006	0.06
Apr 24 2024 1:50:00 PM	0	0.005	0.005	0.069
Apr 24 2024 2:00:00 PM	0	0.008	0.004	0.078
Apr 24 2024 2:10:00 PM	0	0.012	0.003	0.087
Apr 24 2024 2:20:00 PM	0	0.013	0.003	0.087
Apr 24 2024 2:30:00 PM	0	0	0.002	0.081
Apr 24 2024 2:40:00 PM	0	0	0.002	0.077
Apr 24 2024 2:50:00 PM	0	0	0.002	0.078
Apr 24 2024 3:00:00 PM	0	0	0.001	0.081
Apr 24 2024 3:10:00 PM	0	0	0.001	0.08
Apr 24 2024 3:20:00 PM	0	0	0.001	0.082
Apr 24 2024 3:30:00 PM	0	0	0	0.08
Apr 24 2024 3:40:00 PM	0	0	0	0.086
Apr 24 2024 3:50:00 PM	0	0	0	0.091
Apr 24 2024 4:00:00 PM	0	0	0	0.095
Apr 24 2024 4:10:00 PM	0	0	0.001	0.098
Apr 24 2024 4:20:00 PM	0	0	0.001	0.1
Apr 24 2024 4:30:00 PM	0	0	0.002	0.1
Apr 24 2024 4:40:00 PM	0	0	0.002	0.101

Notes:

- CAMP = Community Air Monitoring Plan
- NYSDEC = New York State Department of Environmental Conservation
- PID = photoionization detector
- ppm = parts per million
- VOC = volatile organic compound

^a CAMP limits are defined as follows: 100 µg/m³ (0.1 mg/m³) sustained for 15 minutes or 150 µg/m³ (0.1 mg/m³) instantaneous greater than background for particulates; and at 5 ppm above background sustained for 15 minutes, >5 ppm but <25 ppm above background sustained for 15 minutes, and >25 ppm above background instantaneous for VOCs.

**Post Creek, Highway 414, Corning NY (NYSDEC Project #851053)
Air Monitoring Results - April 25, 2024**

Time	Downwind		Upwind	
	Mass Concentration (mg/m ³) ^a	PID (ppm)	Mass Concentration (mg/m ³) ^a	PID (ppm)
Apr 25 2024 8:40:00 AM	0.005	0	0.007	0.009
Apr 25 2024 8:50:00 AM	0.004	0	0.006	0.005
Apr 25 2024 9:00:00 AM	0.003	0	0.006	0.025
Apr 25 2024 9:10:00 AM	0.003	0	0.006	0.044
Apr 25 2024 9:20:00 AM	0.002	0	0.006	0.062
Apr 25 2024 9:30:00 AM	0.002	0	0.006	0.074
Apr 25 2024 9:40:00 AM	0.001	0	0.005	0.087
Apr 25 2024 9:50:00 AM	0.001	0	0.005	0.096
Apr 25 2024 10:00:00 AM	0.001	0	0.005	0.104
Apr 25 2024 10:10:00 AM	0	0	0.004	0.102
Apr 25 2024 10:20:00 AM	0	0	0.004	0.101
Apr 25 2024 10:30:00 AM	0	0	0.003	0.096
Apr 25 2024 10:40:00 AM	0	0	0.003	0.101
Apr 25 2024 10:50:00 AM	0	0	0.003	0.095
Apr 25 2024 11:00:00 AM	0	0	0.003	0.089
Apr 25 2024 11:10:00 AM	0	0	0.003	0.086
Apr 25 2024 11:20:00 AM	0	0	0.003	0.081
Apr 25 2024 11:30:00 AM	0	0.001	0.002	0.074
Apr 25 2024 11:40:00 AM	0	0	0.002	0.073
Apr 25 2024 11:50:00 AM	0	0	0.002	0.069
Apr 25 2024 12:00:00 PM	0	0	0.002	0.072
Apr 25 2024 12:10:00 PM	0.001	0	0.001	0.069
Apr 25 2024 12:20:00 PM	0.001	0	0.001	0.063
Apr 25 2024 12:30:00 PM	0.001	0	0.001	0.062

Notes:

- CAMP = Community Air Monitoring Plan
- NYSDEC = New York State Department of Environmental Conservation
- PID = photoionization detector
- ppm = parts per million
- VOC = volatile organic compound

^a CAMP limits are defined as follows: 100 µg/m³ (0.1 mg/m³) sustained for 15 minutes or 150 µg/m³ (0.1 mg/m³) instantaneous greater than background for particulates; and at 5 ppm above background sustained for 15 minutes, >5 ppm but <25 ppm above background sustained for 15 minutes, and >25 ppm above background instantaneous for VOCs.