
2025 WORK PLAN

INVESTIGATION OF THE GLASS MANUFACTURING WASTE DISPOSAL AREA IN THE GREATER CORNING AREA OF NEW YORK

Prepared For:



**Department of
Environmental
Conservation**

New York State Department of Environmental Conservation
Division of Environmental Remediation
625 Broadway 12th Floor
Albany, New York 12233 – 7012

Prepared By:



301 Plainfield Road, Suite 350
Syracuse, New York 13212

JANUARY 2025

TABLE OF CONTENTS

2025WORKPLAN INVESTIGATION OF THE GLASS MANUFACTURING WASTE DISPOSAL AREA IN THE GREATER CORNING AREA OF NEW YORK.....	1
JANUARY 2025	1
1.0 INTRODUCTION AND BACKGROUND	1
2.0 NYSDEC PRIORITIES	5
3.0 CONCEPTUAL SITE MODEL.....	9
4.0 CURRENT STATUS AND LONG-TERM OUTLOOK.....	10
5.0 PROPOSED WORK.....	12
6.0 NEXT STEPS.....	16
6.1 Immediate Tasks	16
6.2 Annual Tasks.....	16
7.0 REFERENCES.....	17

LIST OF FIGURES

- Figure 1 Greater Corning, New York Area Confirmed/Suspected ABG properties
- Figure 2 Areas of Interest & Areas of Concern
- Figure 3 Operable Units
- Figure 4 ABG in ROW

LIST OF ACRONYMS

<u>Acronym</u>	<u>Definition</u>
ABG	ash, brick, and/or glass
CAS	Community Accessibility Session
CSM	conceptual site model
NYSDEC	New York State Department of Environmental Conservation
OU	operable unit
SMP	Site Management Plan
RCRA	Resource Conservation and Recovery Act
ROW	Right-of-way

1.0 INTRODUCTION AND BACKGROUND

NYSDEC, in consultation with the NYSDOH, is implementing an area-wide investigation of contamination, including hazardous waste and/or hazardous substances in the Greater Corning, New York area. A current map of areas with known or potential contamination, which are or may be associated with historical glass manufacturing and waste disposal is included as **Figure 1**.

Protecting public health and the environment from exposure to contamination from or associated with historic glass manufacturing and waste disposal in the Greater Corning, New York area is of utmost importance to the NYSDEC. The number of hazardous waste sites identified in the Greater Corning, New York area has increased dramatically over the past several years and, therefore, the NYSDEC is taking a broader, area-wide approach to addressing contamination from historical glass operations. A figure of areas of interest and areas of concern are attached as **Figure 2**.

To guide this approach, the NYSDEC is seeking information and documentation that would allow for the expeditious and efficient investigation as well as, if necessary, remediation of the Greater Corning, New York area. Corning Incorporated has a long history of glass manufacturing and waste disposal in the Greater Corning, New York area (since 1868) and previously acknowledged disposing of its waste within the same region.

In 2012, fill containing waste materials from former glass manufacturing processes, now known as ash, brick, and/or glass (ABG), was encountered during a capital improvement project at the Corning-Painted Post High School. Since 2012, approximately 70 locations have been identified as being disposal areas of ABG. NYSDEC has determined that Corning Incorporated's former plants generated the ABG, which was subsequently disposed of throughout the Greater Corning, New York area. The following former Corning Incorporated production plants went through RCRA closure before the disclosure of offsite disposal of hazardous materials:

- Corning Glass Works Plant – One Riverfront Plaza
- Steuben Plant/Fulton Street Facility – One Museum Way
- Fallbrook Plant – East Tioga Avenue
- Pressware Plant – One Steuben Street

Other locations that did not have RCRA interim status include Corning Incorporated's Vycor Plant and Corning Refractories.

Due to the age of Corning Incorporated's former plants, Corning Incorporated's specific operations and waste management practices are generally not known. However, historical records indicate that one of Corning Incorporated pre-cursor companies, Corning Glass Works, disposed of waste at multiple locations throughout the Greater Corning, New York area.



Corning Glass Works maintained ash dumps in Corning, New York at least as early as 1920. A November 1920 deed from the estate of Amory Houghton to Corning Homes, Inc. for properties in the Corning Study Area (NYSDEC Site No. 851046) includes a condition that “the Corning Glass Works, its successors and assigns shall forever have the right and privilege of maintaining the structures, buildings and ash dumps as now located.” The Study Area is comprised of the Houghton Plot.

In a letter dated August 17, 1978, Corning Incorporated’s predecessor, Corning Glass Works, disclosed to the New York State Department of Health that the company had used several locations throughout the greater Corning area for the disposal of its waste. These locations are:

1. The Allen Dump on the Bailey Creek Road (now closed);
2. Houghton Plot on Corning’s Northside (now paved and covered with homes);
3. A 'Reynolds' property on Route 414 (now covered by the 414 Club/Motel);
4. A George Elliott property on Route 414 known as Pine Hill;
5. A Callahan property on Route 414 (now covered with mini or temporary warehouse or storage facilities);
6. The River Road site in South Corning (assumed to be the South Corning Road properties, Site #851069).

Corning Incorporated further identified other areas of interest in its November 17, 2023 response to NYSDEC’s Demand and Request for Information Related to NYSDEC Area-Wide Investigation of Hazardous Waste Contamination in the Greater Corning, New York area, including but not limited to:

1. Pinewood Avenue, Corning, N.Y.
2. Rhinehart Sand and Gravel
3. Erwin Manufacturing Site
4. Landfill behind Canada Road Facility

5. Watkins Glen Racetrack
6. Indian Hill Road
7. Houghton Park (Corning Northside complex)
8. Main Plant – Headquarters
9. VYCOT Lot
10. Gibson Scrapyard
11. Horseheads Holding Point
12. Allen Dump Bailey Creek Road
13. Erwin Landfill
14. Lindsey Landfill
15. YMCA
16. Chemung Landfill
17. Bath Landfill

There are many other areas of concern and/or encounters with ABG. ABG has been observed and reported by residents during the Investigation and Site Characterization of the Glass Manufacturing Waste Disposal Area in the Greater Corning Area of New York such as during a water line replacement throughout a neighborhood in South Corning, along Watauga Avenue following recent utility work and at numerous parcels throughout the Greater Corning, New York area.

Additionally, former Corning Incorporated employees/contractors have provided information about past Corning Incorporated disposal at:

1. Van Etten (Site # 851061)
2. River Road (also admitted to by Corning Incorporated and assumed to be the South Corning Road properties, Site #851069)
3. Speer Drive
4. Steege Hill Road
5. Watkins Avenue
6. Bailey Creek Road
7. Corning Building Company (part of Vine Street Site # 851067)
8. Frederick Carter School
9. Mountainbrow Townhouses
10. Village of Riverside

It was a widespread practice for construction and demolition debris, including ash, brick and glass, to be used as fill to improve drainage, fill in low lying areas as an aid to development or address flood impacts. Several areas have been investigated, or are in the process of being investigated, and the presence of hazardous waste has been documented (e.g., Houghton Plot also known as the Study Area).

Corning Glass Works has also detailed its historic practice of discharging industrial wastewater into the Chemung River from its various plants located in the Greater Corning, New York area. See Industrial Waste Water Discharges to the Chemung River from Corning Glass Works Plants Located in Corning, New York dated April 15, 1967. In 2014, hazardous waste was documented in the outfall pipes of one of these plants, which discharges directly to the Chemung River. See Corning Incorporated Closure of Flood Control Valves # 9, #10, and #10A, submitted by Corning Incorporated and dated November 7, 2014.

The Investigation and Site Characterization of the Glass Manufacturing Waste Disposal Area in the Greater Corning Area of New York is intended to complement ongoing investigation and remediation at sites across the Greater Corning, New York area, including those for which Corning Incorporated has executed an Order on Consent or signed a Brownfield cleanup Agreement:

851046 Study Area
851051 Guthrie Centerway Property
851062 Guthrie Clinic North
851053 Post Creek
851061 Van Etten
851048 Corning Refractories
C851037 Former Fulton Finishing
C851037B Steuben Glass
C851031 Tioga Avenue

NYSDEC preliminary sites and/or IRMs sites:

851012 Dodge Avenue
851048 City of Corning Fire Department
851072 Townsend Avenue
851067 Vine Street
851066 Denison Park
851065 Woodview Avenue
851073 Rose Road
11094 River Road Spoils
851069 South Corning Road
851068 South Corning Spoils
851047 Centerway Pedestrian Bridge
851052 West Road
851055 William Street Park
851056 McKinney Park
851060 Stewart Park
851063 Conhocton Street Flood Control Berm Area
851064 Connector Street
851076 Pine Hill Road

Other sites where investigation and remediation of ABG has been completed by other parties include:

851054 Former Days Inn
851057 City of Corning Sewer Right of Way (within Denison Park)
C851049 Former City of Corning Hospital and Related Parcels

This work plan provides a detailed plan for 2025 for the Investigation of the Glass Manufacturing Waste Disposal Area in the Greater Corning Area of New York with a special focus on more sensitive sites that threaten public health under the State Superfund (SSF) program. Priority sites include homes, daycare centers, and places of recreation (i.e., parks and the Chemung River and its tributaries).

2.0 NYSDEC PRIORITIES

The overall organization and objectives of the Investigation and Site Characterization of the Glass Manufacturing Waste Disposal Area in the Greater Corning Area of New York are framed on the priorities identified by NYSDEC. When identifying these priorities the following were considered:

- Likelihood that an area of concern or property has released or has the potential to release hazardous substances into the environment; ABG has been shown to be hazardous and has been found throughout the Greater Corning, New York area;
- Characteristics of the waste (e.g., toxicity and waste quantity); mostly inorganics (namely but not limited to arsenic, cadmium, and lead), and the volumes have been shown to be substantial; and
- People or sensitive environments (receptors) affected by the release, includes residential areas and places of recreation (parks and the Chemung River, including its tributaries), some areas are in or proximate to potential environmental justice areas or disadvantaged communities.

Overall, NYSDEC has the following goals for the Investigation and Site Characterization of the Glass Manufacturing Waste Disposal Area in the Greater Corning Area of New York:

- Investigation
 - How much investigation is needed to confirm the extent of ABG within the site boundaries?
 - Proactively clear sensitive receptors (e.g., schools, daycares, places of recreation, residential)
 - The determination for prioritizing sites for investigation and follow up actions based on the
 - Prioritization Checklist will be developed and utilized.
 - If NYSDEC receives data indicating that action is needed for a property, a response plan would be developed to address immediate risks to public health or the environment. This plan would typically involve initial steps such as securing the affected area to prevent unauthorized access and limit exposure, followed by a thorough assessment to confirm the extent and nature of the contamination. Based on this assessment, appropriate remediation strategies would be selected, and a determination of responsible party made.
 - Generic Work Plans
 - When a site is selected for investigation, a generic work plan will be used. The Corning Area generic work plan is being developed as part of this 2025 Work Plan and will provide a standardized template that outlines common procedures, safety protocols, sampling methodologies, and quality control measures applicable across all properties. This standardization streamlines preparation processes, reduces administrative overheads, and ensures consistency in execution.
 - The generic work plan establishes a flexible framework that can be customized through pre-execution discussions with field teams based on specific property characteristics or concerns. Teams will ensure that each site's unique environmental features are adequately addressed without the need for exhaustive individualized plans. This adaptability is key in responding swiftly to unforeseen challenges or discoveries on-site.
 - This approach will also facilitate clearer communication with stakeholders—including property owners—by providing them with an easily understandable framework of what to expect during investigation while leaving room for input regarding their specific concerns or objectives.
 - Results Reporting
 - As part of our enhanced outreach approach, we are committed to ensuring property owners are promptly and thoroughly informed if ash, brick, and glass (ABG) materials are discovered on their property. Upon confirmation of ABG presence through our sampling process, property owners will receive a comprehensive package designed to provide clear and detailed information about the findings. This package will include a personalized

letter that outlines the results of the investigation in an accessible manner, explaining the significance of the findings and outlining potential next steps. Accompanying this letter will be a figure or map that visually represents the specific locations on their property where ABG materials were identified, offering a spatial understanding of the contamination extent. Additionally, we will include the analytical data from the sampling efforts to ensure transparency and provide a scientific basis for our findings and recommendations. This approach underscores our commitment to open communication with property owners, ensuring they are equipped with all necessary information to understand how these findings may affect their property and what actions may follow.

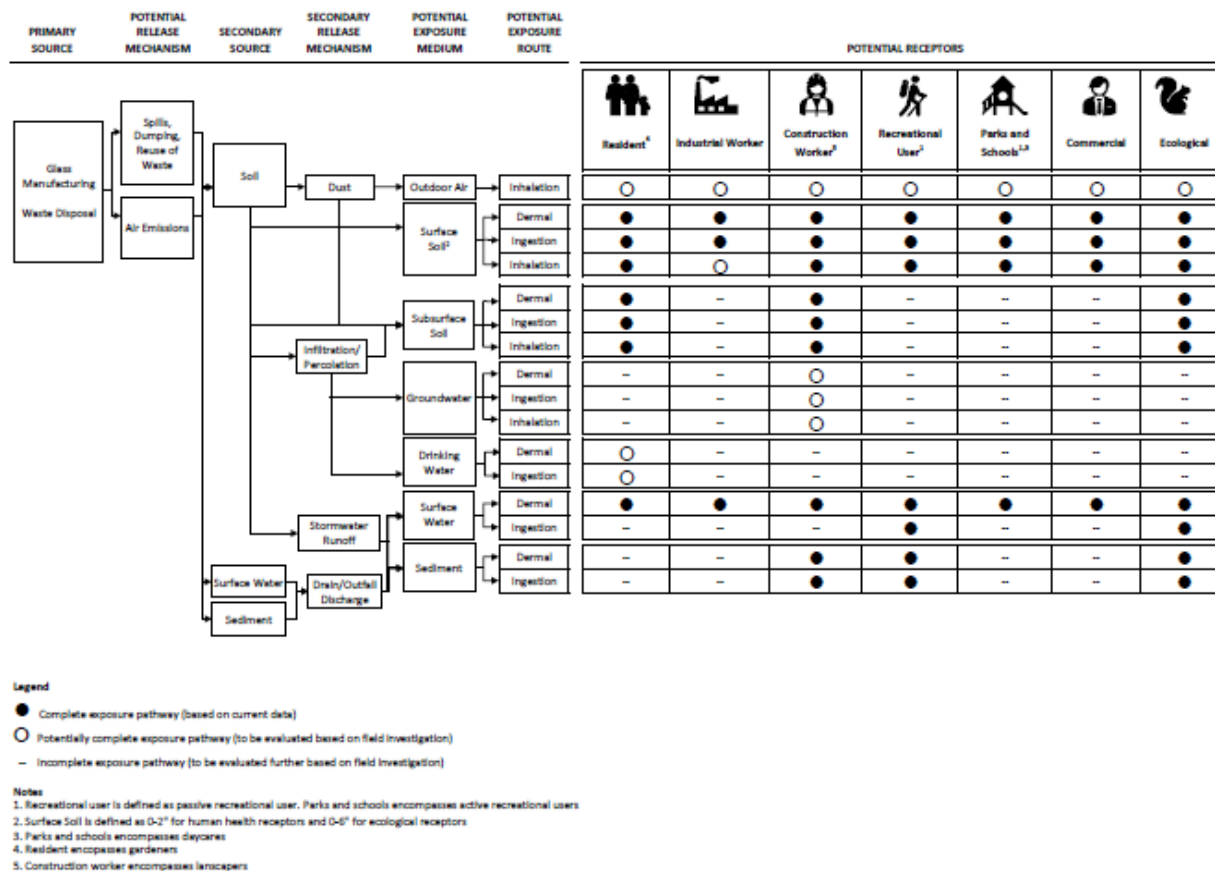
- Site Management Approach
 - Develop an area wide site management approach.
 - Develop protocols for outreach/education and response to reports of encounters with ABG including notifications to property owners in proximity.
 - Develop key messaging for property owners.
 - What to look for, who to contact, minimizing exposures.
 - Periodic notifications and community updates
 - Transition to SM approach for areas outside of sites/investigations.
 - Utilize educational outreach, where encounters with ABG would consider land use (e.g., residential), potential or known nature and extent, resources potentially impacted (e.g., creek) or potential for exposures when determining the need for tracking, response action or investigation.
 - All encounters, investigations and responses would collect relevant information related to known origin of materials encountered including glass fused to refractory brick, products or patented materials, cullet or other information useful for determining potentially responsible parties.
 - Handle reports of ABG like spills, historic and new spills are everywhere so you don't look for them, you respond to them, ABG is similar and needs a response to encounters.
- Tracking
 - Monthly tracking meetings attended by NYSDEC and NYDOH
 - Maintain agenda, minutes, action item list, cost estimates, updated schedule and budget.
 - Dashboard development and maintenance, with appropriate search functions and canned reports.
 - Build and maintain tracking of potential sites, including those with access sought/obtained, investigation started under AWS, not yet investigated, those preliminary screening completed and determined NA at this time, etc.
 - Track encounters with ABG.
 - Satellite sites outside of consolidated main areas not yet investigated or new encounters, possibly change path and/or consider setting (e.g., residential), potential or known nature and extent, resources known to be or potentially impacted (e.g., creek), known or potential for exposures or other relevant factors before determining response or need for further investigation at this time. AWS could be used to perform initial property assessment of known or suspected areas of concern, collect screening level data for higher risk areas to inform outreach and/or guide future response actions, and manage response actions.
 - Build and maintain interested stakeholder database.
 - Build and maintain sensitive receptor database – schools, daycares, recreational areas.
 - Estimate and track estimated costs for remaining investigation and remediation based on assumptions, what's known at that time.
 - Cost recovery may be sought on an annual basis.
- Coordination
 - Coordinate information gathering with federal and state stakeholders.

- Partner with Southern Tier Damage Prevention Council and utility providers across the Greater Corning, New York area to ensure ABG is properly managed when encountered (no investigation will be required in rights of way).
- Coordination with other entities (e.g., ACOE, NYSDEC mining and permits, NYSDEC operations, etc.) to track encounters with ABG.
- Coordinate with affected municipalities.
- Outreach
 - The importance of a robust community and stakeholder outreach and communications plan cannot be overstated. Such a plan ensures that all affected parties are informed, engaged, and empowered throughout the process. It facilitates transparency, builds trust between the NYSDEC and the community, and enables the incorporation of local knowledge into decision-making processes. Moreover, effective communication helps to demystify complex technical information, making it accessible to non-experts and ensuring that community concerns are addressed promptly and comprehensively.
 - NYSDEC website - The NYSDEC site provides stakeholders with immediate access to updates, documents, contact information, and frequently asked questions.
 - Story Map - The Story Map visually guides the viewer through a narrative that combines geographical information with supplementary context to create an interactive learning experience. A Story Map focused on the Houghton Plot (Study Area) is public.
 - Community Liaison Plan – This evergreen document underscores a commitment to open, two-way communication, ensuring that community members are not only kept informed about project developments but also have a dedicated channel for voicing their concerns, questions, and suggestions.
 - Newsletter – These offer a regular, reliable source of information, updating the community and other interested parties on project progress, upcoming events, and key milestones.
 - Community Availability Session - These sessions provide a direct platform for open dialogue between the project team and the community.
 - Project Hotline - This hotline is used by the public to report observations of or encounters with ABG.
 - Project website - <https://dec.ny.gov/environmental-protection/site-cleanup/regional-remediation-project-information/region-8/cleanup-within-corning-area>
 - This public availability webpage provides an update on the ongoing investigation and cleanup actions, offers information and resources for the public, and provides a sharing platform of all materials presented in past Public Availability Sessions and Communications.
 - Interacting with the Public and Evaluating Reports of ABG – The flow chart has been developed and maintained that explains how NYSDEC will respond and track interactions with residents of Corning and other stakeholders in the Corning area.
- Research
 - Historical research involving locating, examining, and interpreting original source materials related to the generation, handling, and disposal of waste materials from glass manufacturing facilities in the Greater Corning, New York area.
 - Parsons report on nexus based on research and data/documents collected during investigation and remediation.
 - Research of the disposal practices of all predecessor and successor companies of Corning Incorporated, including but not limited to:
 - Corning Glass Works;
 - World Kitchen, Inc.;

- Empire Machine Company;
 - Hartford-Empire Company;
 - Houghton Trust;
 - Steuben Glass Works; and
 - Macbeth-Evans Glass Company.
- Research into the potential for waste disposal impacts to sensitive receptors such as waterways, residential properties, schools and daycare facilities.

3.0 CONCEPTUAL SITE MODEL

The conceptual site model (CSM) identifies the current understanding of the potential sources of contamination, types of contaminants and affected media, potential release mechanisms and contaminant pathways from source areas to offsite areas, and how potential human and environmental receptors may be exposed to this contamination. The CSM will be updated when new information is obtained that impacts the current understanding.



4.0 CURRENT STATUS AND LONG-TERM OUTLOOK

Category	Status as of December 2024	Long Term Outlook
Investigation	<ul style="list-style-type: none"> Sampling was completed at Hugh Gregg Elementary School in August 2024. Sampling began at Severn Elementary School in August 2024. Work was paused when school resumed and will continue in October 2024. 39 properties were sampled in December 2023. Data transmittal letters were sent to property owners in September 2024. Developed a templated property owner notification letter for use when ABG has been reported on their property. 	<ul style="list-style-type: none"> Implementation of Next Steps for Properties with ABG and/or Exceedances. Identification and investigation of additional properties with reported or suspected ABG.
Site Management Approach	<ul style="list-style-type: none"> Needed 	<ul style="list-style-type: none"> Continue Investigation of the Glass Manufacturing Waste Disposal Area in the Greater Corning Area of New York Site Management Plan. Transition to SM approach for areas outside of ongoing sites/investigations with investigation/remediation of priority areas or those with potential exposures
Tracking	<ul style="list-style-type: none"> Dashboard developed for Study Area. Drafted state costs by area of concern tracking. 	<ul style="list-style-type: none"> Dashboard will be expanded to the Investigation and Site Characterization of the Glass Manufacturing Waste Disposal Area in the Greater Corning Area of New York. Build out interim databases for sites, stakeholders, sensitive receptors, costs.

Coordination	<ul style="list-style-type: none"> To date has been 'as needed,' except for routine coordination with federal stakeholders which is conducted quarterly. 	<ul style="list-style-type: none"> Looking to formalize with various stakeholders, set up routine calls and develop written agreements on notice and BMPs.
Outreach	<ul style="list-style-type: none"> The community Liaison Plan was updated and will become an evergreen document. A new Story Map is being developed that describes the work planned for the Investigation and Site Characterization of the Glass Manufacturing Waste Disposal Area in the Greater Corning Area of New York. The last newsletter was issued summer 2024. The last Community Availability Session was held May 10, 2023. Project hotline in place. 	<ul style="list-style-type: none"> Maintain documents, webpages, and perform annual outreach activities.
Research	<ul style="list-style-type: none"> Information and data from investigations and remediation being assembled in comprehensive report. Initiating historical research Reviewing and compiling available data related to air emissions 	<ul style="list-style-type: none"> Engage historical research firm. Determine need for background concentration study versus the use of rural background study or SCOs.

5.0 PROPOSED WORK

Category	Proposed 2025 Priority Activities	Contingency Activities*
Investigation	<ul style="list-style-type: none"> Send Property Owner Notification Letters (Goff Rd/Markle Hollow Rd/Steege Hill Rd/Speer Dr/Watkins Ave; Bailey Creek Rd/Charles St/Goodyear/Florentia Ln E) (1Q25) Send requests for access and/or follow up on requests for access to property owners (1-2Q25) Issue report(s) on completed investigations (1Q25) Develop Generic Work Plans Complete investigations at new properties identified and access obtained. (2-4Q25) Determine next steps on 13 properties identified during Phase 1 AWS investigation to have ABG or exceedance. (1Q25) This could include: <ul style="list-style-type: none"> Additional investigation to support remedial action. Interim Action SMP Other Determine next steps on Hugh Gregg Elementary School. (1Q25) This could include: <ul style="list-style-type: none"> Additional investigation to support remedial action. Interim Action SMP Other Determine need, procedure and implement background investigation. (1-3Q25) 	<ul style="list-style-type: none"> Develop NYSDEC approach for advancing sites where Corning Incorporated declines to conduct work. Consider inspecting sensitive receptors (e.g., daycare facilities).

	<ul style="list-style-type: none"> • Develop soil SCO for boron (2Q25) • Finalize Prioritization Model (1Q25) 	
Site Management Approach	<ul style="list-style-type: none"> • Develop area wide site management approach, (2Q25) • Research the potential to use land use tracking to monitor potential disturbances to engineering controls (e.g., Terradex/Landwatch), (2Q25) • Develop ABG Policy (4Q25) 	<ul style="list-style-type: none"> • Transition to SM approach for areas outside of ongoing sites/investigations with investigation/remediation of priority areas or those with potential exposures
Tracking	<ul style="list-style-type: none"> • Hold tracking meetings with NYSDEC and NYSDOH, (Monthly) • Expand dashboard to the Investigation of the Glass Manufacturing Waste Disposal Area in the Greater Corning Area of New York, (1-2Q25). • Develop interim databases for sites, stakeholders, sensitive receptors, encounters with ABG, costs, (2Q25). 	<ul style="list-style-type: none"> • Additional search and reporting functions for dashboard.
Coordination	<ul style="list-style-type: none"> • Meet with Southern Tier Damage Prevention Council, (1Q25). • Continue communication with federal and state stakeholders, (Quarterly). • Coordinate with municipal leaders, (Quarterly). • Develop and implement a formal reporting system for utility stakeholders (1-2Q25) • Coordination with other entities (e.g., ACOE, NYSDEC mining and permits, NYSDEC operations, etc.) to track encounters with ABG, (As Needed). • Coordination with school district regarding investigation findings and next steps (1Q25). 	<ul style="list-style-type: none"> • Determine need for formal agreements and reminders.
Outreach	<ul style="list-style-type: none"> • Update NYDEC website(s), (1-2Q25). • Issue 2025 newsletter, (2Q25). 	<ul style="list-style-type: none"> • Develop Spotlight. • Develop Tree Preservation Plan.

	<ul style="list-style-type: none"> • Finalize the Investigation of the Glass Manufacturing Waste Disposal Area in the Greater Corning Area of New York Story Map (1Q25). • Update the Liaison Plan (As Needed). • Hold Community Availability Session (2Q25). • Maintain project hotline (Continuous). 	
Research	<ul style="list-style-type: none"> • Complete Parsons report on information and data collected during investigations and remediation (2Q25) • Complete historical research (4Q25). 	<ul style="list-style-type: none"> • Conduct preliminary screening to determine the potential for aerial deposition from past glass manufacturing/disposal practices. • Consider additional forensics. • Perform a preliminary screening for the potential presence of emerging contaminants (PFAS, 1,4-dioxane, etc.) in soil and sediments related to Corning Incorporated operations to determine if further evaluation/investigation is warranted. • Investigate effectiveness of several geophysical methods that have been identified that may be useful for identifying and/or delineating ABG in the subsurface, that can be used to quickly screen relatively large areas. • Update Conceptual Site Model, if necessary.

*Activities otherwise planned for 2026 may be brought forward to 2025 as contingency activities if necessary and/or substituted for activities identified given the potential for site access issues, delays in approval, or other unexpected changes

6.0 NEXT STEPS

6.1 Immediate Tasks

In preparation for 2025, Parsons will start the following activities in the fourth quarter of 2024.

1. Develop a list of properties to be investigated in 2025.
2. Finalize Prioritization Checklist
3. Complete procurement for Historical Research.
4. Prepare and submit 2025 project schedule for NYSDEC review and approval.
5. Prepare and submit 2025 budget for NYSDEC review and approval and, if necessary, a work assignment budget amendment.
6. Update Liaison Plan.
7. Update and launch revised StoryMap.
8. Update and launch NYSDEC website.
9. Dashboard updated with Investigation and Site Characterization of the Glass Manufacturing Waste Disposal Area in the Greater Corning Area of New York data.
10. Sharepoint updated for improved document retention and retrieval with DocumentFinder application.

6.2 Annual Tasks

This annual reporting mechanism is designed to ensure accountability, facilitate adaptive management based on real-world insights, and maintain a clear line of communication with NYSDEC regarding our collective progress toward project goals.

At least 90 days before the start of the calendar year 2026, a work plan detailing the actions proposed to be taken during the upcoming calendar year will be submitted for NYSDEC's review, prioritization and approval.

Concurrently, a comprehensive annual report will be prepared and submitted to the NYSDEC, encapsulating the progress, achievements, and challenges encountered throughout the project. This report will summarize the activities undertaken during the year, providing a transparent account of both accomplishments and any deviations from planned actions, along with justifications for such deviations. It will assess the effectiveness of current approaches and procedures, drawing on practical experiences to recommend adjustments or improvements where necessary. Additionally, the letter report will include a prioritized list of sites for attention in the upcoming year, aligning future actions with strategic objectives and ensuring that resources are directed toward areas of greatest need.

7.0 REFERENCES

Project website - <https://dec.ny.gov/environmental-protection/site-cleanup/regional-remediation-project-information/region-8/cleanup-within-corning-area>

Community Liaison Plan - [\\nysyr04fs01\projects\NYSDEC Program\451961 - WA #46 - Corning Study Area Site\6.0 Correspondence\Public Outreach\Community Liaison Plan](#)

Best Management Practices - [\\nysyr04fs01\projects\NYSDEC Program\453071 - WA #33 - Corning Area Wide Study, SC\6.0 Correspondence\6.1 Sent\ABG Reported On Property\Corning Area Wide BMPs.pdf](#)

Industrial Waste Guide - [AWS 2025 Plan](#)

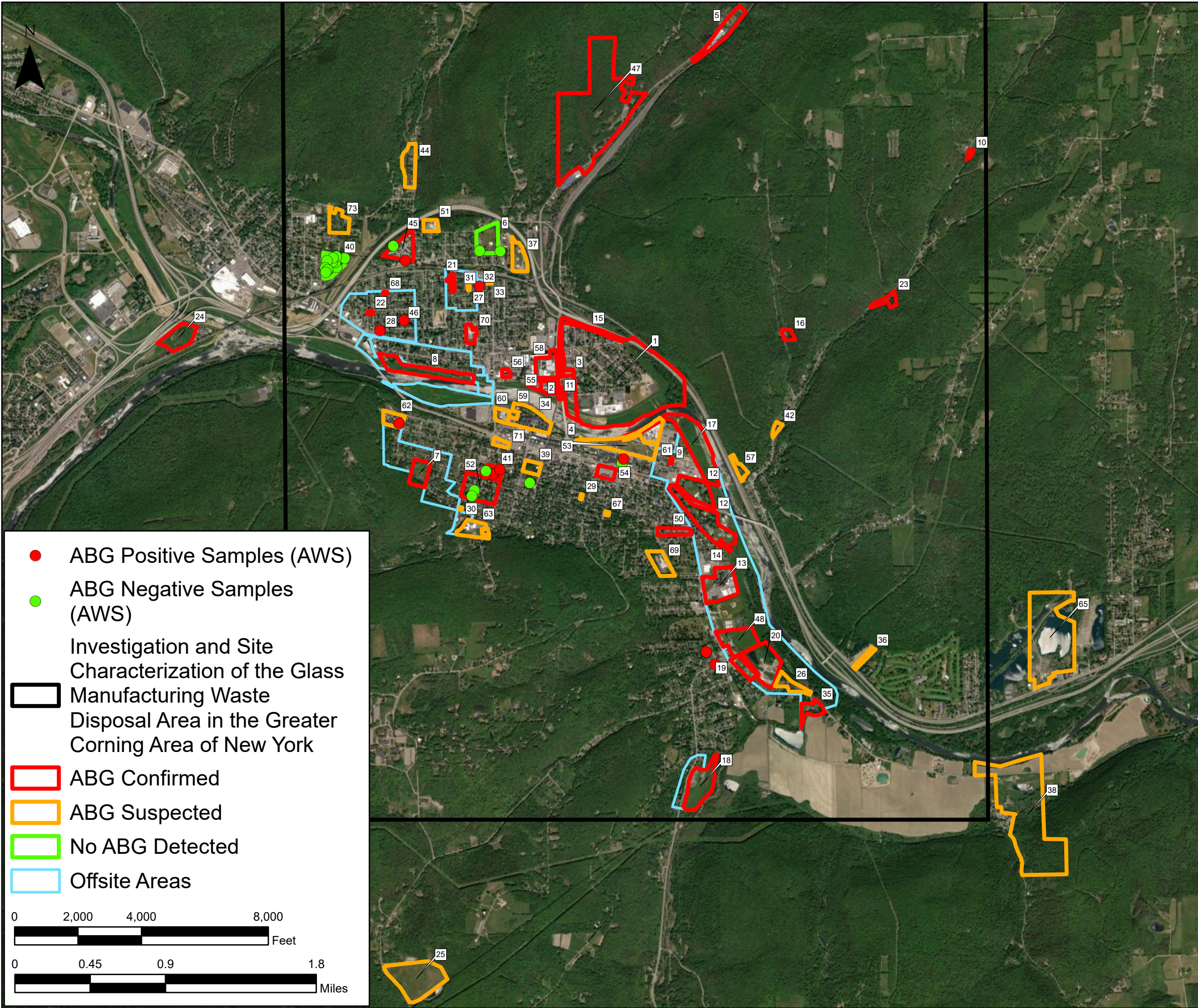
851074 Site Characterization Work Plan - [\\nysyr04fs01\projects\NYSDEC Program\453071 - WA #33 - Corning Area Wide Study, SC\9.0 Reports\Work Plan\AWS Site Characterization Work Plan 2023-03 Redacted.pdf](#)

Municipality and Utility Stakeholders - [Municipality and Utility Stakeholders.docx](#)

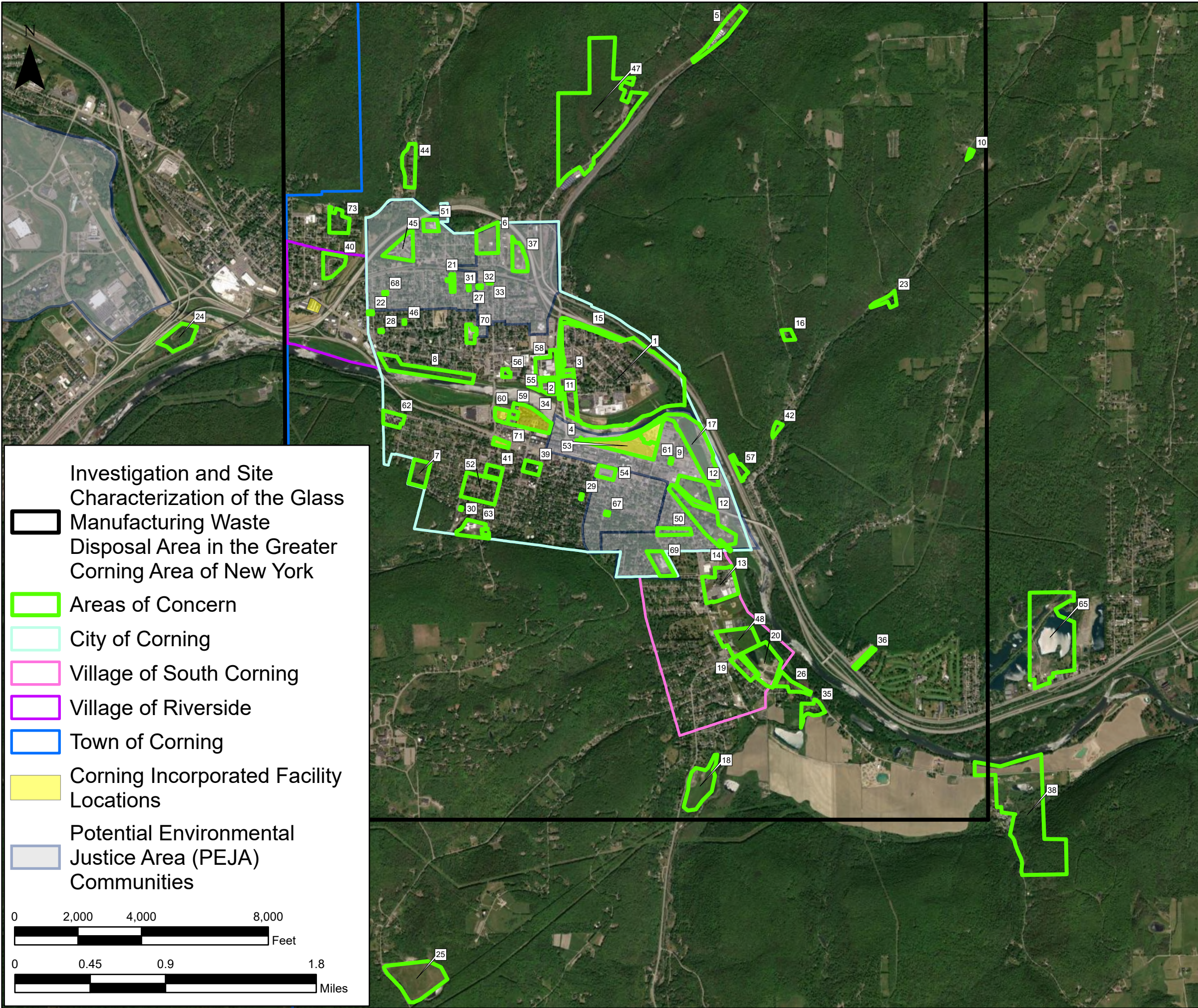
Investigation Flow Chart - [Investigation Flow Chart.docx](#)

Questionnaire - [Corning Area-wide Investigation Questionnaire.pdf](#)

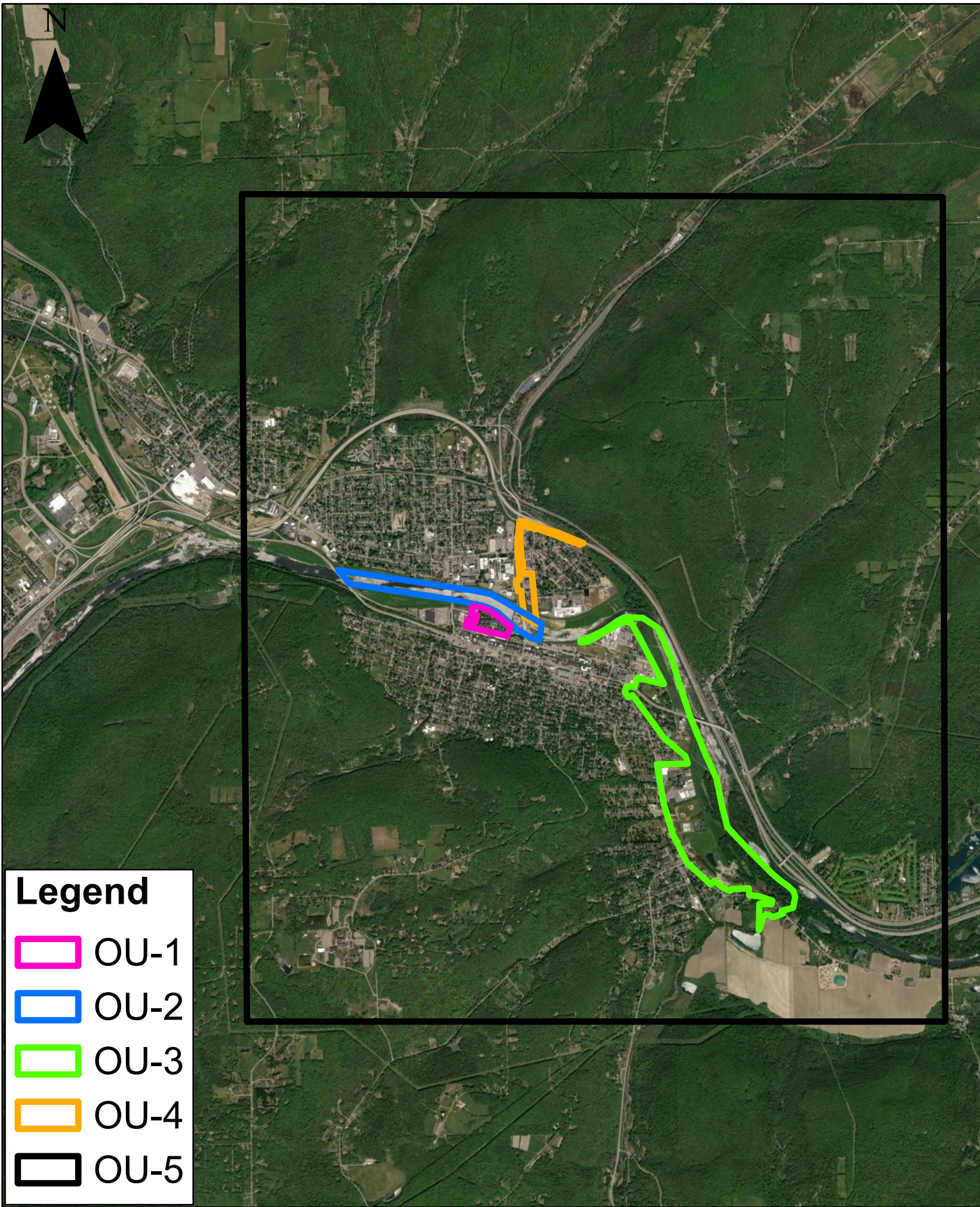
FIGURES








1. Residential Study Area OUs 1 to 5 (Site # 851046)
2. Guthrie Center Way Property (Site # 851051)
3. Guthrie Clinic North (Site # 851062)
4. City of Corning Fire Department (Site # 851050)
5. Post Creek (Site # 851053)
6. Stewart Park (Site # 851060)
7. McKinney Park (Site # 851056)
8. William Street/Hillvue Park (Site # 851055)
9. Woodview Avenue (Site # 851065)
10. West Road (Site # 851052)
11. Centerway Pedestrian Bridge Approach (Site # 851047)
12. Denison Park (Site #851066)
13. Vine Street (Site # 851067)
14. City of Corning Sewer Right of Way (Site # 851057)
15. Connector Street (Site # 851064)
16. Van Etten Road (Site # 851061)
17. Conhocton Street Flood Control Berm Area (Site # 851063)
18. South Corning Spoils Area (Site # 851068)
19. South Corning Road (Site # 851069)
20. River Road Spoils Area (Site # 851070)
21. Dodge Avenue (Site # 851071)
22. Townsend Avenue (Site # 851072)
23. Rose Road (Site # 851073)
24. Erwin Town Landfill (Site # 851003)
25. Allen Landfill on Bailey Creek Road (Site # 851001)
26. Allen Properties
27. Sterling Street
28. Fuller Avenue A
29. East Third Street
30. West Sixth Street
31. Sly Avenue A
32. Sly Avenue B
33. Bridge Street
34. Corning Incorporated Corporate Headquarters (Site # 851042)
35. River Road
36. East Corning Road
37. Baker Street/VFW/Cinderella Softball Fields
38. Brown Hollow Road
39. Canfield Park
40. Charles Street/Cutler Creek
41. Chestnut Street and West Third Street (Monkey Run)
42. College Avenue
43. Duvall Road, Dix, New York (not shown)
44. Hornby Road/Cutler Creek
45. Lamphear Court
46. Oneida Place
47. Pine Hill Road
48. South Corning Driving Range
49. Town of Caton (not shown)
50. Watuaga Ave Extension
51. Winfield Elementary School
52. West 4th Street
53. Tioga Avenue Site (Site # C851031)
54. Former Corning Hospital and Related Parcels (Site # C851049)
55. Corning Family YMCA (Site # V00357)
56. Former Days Inn (Site # 851054)
57. Gibson Scrapyard (Site # 851058)
58. Steuben Glass Facility (Site # C851037B)
59. Former Fulton Finishing Plant (Site # C851037)
60. Corning Refractories Plant (Site # 851048)
61. World Kitchen, LLC (Site # 851039)
62. Mountainbrow Village Townhouse
63. Frederick Carder School
64. Benedict Gravel Pit (not shown)
65. Rhinehart Sand and Gravel
66. Davis Road Dump (not shown)
67. Florentia Lane
68. Fuller Avenue B
69. William Severn Elementary
70. Hugh Gregg Elementary
71. Vycor Plant
72. Hakes C&D Landfill (not shown)
73. Charles St/Hamilton Road



- Investigation and Site Characterization of the Glass Disposal Area in the Greater Corning Area of New York
- Areas of Concern
- City of Corning
- Village of South Corning
- Village of Riverside
- Town of Corning
- Corning Incorporated Facility Locations
- Potential Environmental Justice Area (PEJA) Communities
1. Residential Study Area OUs 1 to 5 (Site # 851046)
 2. Guthrie Center Way Property (Site # 851051)
 3. Guthrie Clinic North (Site # 851062)
 4. City of Corning Fire Department (Site # 851050)
 5. Post Creek (Site # 851053)
 6. Stewart Park (Site # 851060)
 7. McKinney Park (Site # 851056)
 8. William Street/Hillvue Park (Site # 851055)
 9. Woodview Avenue (Site # 851065)
 10. West Road (Site # 851052)
 11. Centerway Pedestrian Bridge Approach (Site # 851047)
 12. Denison Park (Site #851066)
 13. Vine Street (Site # 851067)
 14. City of Corning Sewer Right of Way (Site # 851057)
 15. Connector Street (Site # 851064)
 16. Van Etten Road (Site # 851061)
 17. Conhocton Street Flood Control Berm Area (Site # 851063)
 18. South Corning Spoils Area (Site # 851068)
 19. South Corning Road (Site # 851069)
 20. River Road Spoils Area (Site # 851070)
 21. Dodge Avenue (Site # 851071)
 22. Townsend Avenue (Site # 851072)
 23. Rose Road (Site # 851073)
 24. Erwin Town Landfill (Site # 851003)
 25. Allen Landfill on Bailey Creek Road (Site # 851001)
 26. Allen Properties
 27. Sterling Street
 28. Fuller Avenue A
 29. East Third Street
 30. West Sixth Street
 31. Sly Avenue A
 32. Sly Avenue B
 33. Bridge Street
 34. Corning Incorporated Corporate Headquarters (Site # 851042)
 35. River Road
 36. East Corning Road
 37. Baker Street/VFW/Cinderella Softball Fields
 38. Brown Hollow Road
 39. Canfield Park
 40. Charles Street/Cutler Creek
 41. Chestnut Street and West Third Street (Monkey Run)
 42. College Avenue
 43. Duvall Road, Dix, New York (not shown)
 44. Hornby Road/Cutler Creek
 45. Lamphear Court
 46. Oneida Place
 47. Pine Hill Road
 48. South Corning Driving Range
 49. Town of Caton (not shown)
 50. Watuaga Ave Extension
 51. Winfield Elementary School
 52. West 4th Street
 53. Tioga Avenue Site (Site # C851031)
 54. Former Corning Hospital and Related Parcels (Site # C851049)
 55. Corning Family YMCA (Site # V00357)
 56. Former Days Inn (Site # 851054)
 57. Gibson Scrapyard (Site # 851058)
 58. Steuben Glass Facility (Site # C851037B)
 59. Former Fulton Finishing Plant (Site # C851037)
 60. Corning Refractories Plant (Site # 851048)
 61. World Kitchen, LLC (Site # 851039)
 62. Mountainbrow Village Townhouse
 63. Frederick Carder School
 64. Benedict Gravel Pit (not shown)
 65. Rhinehart Sand and Gravel
 66. Davis Road Dump (not shown)
 67. Florentia Lane
 68. Fuller Avenue B
 69. William Severn Elementary
 70. Hugh Gregg Elementary
 71. Vycor Plant
 72. Hakes C&D Landfill (not shown)
 73. Charles St/Hamilton Road

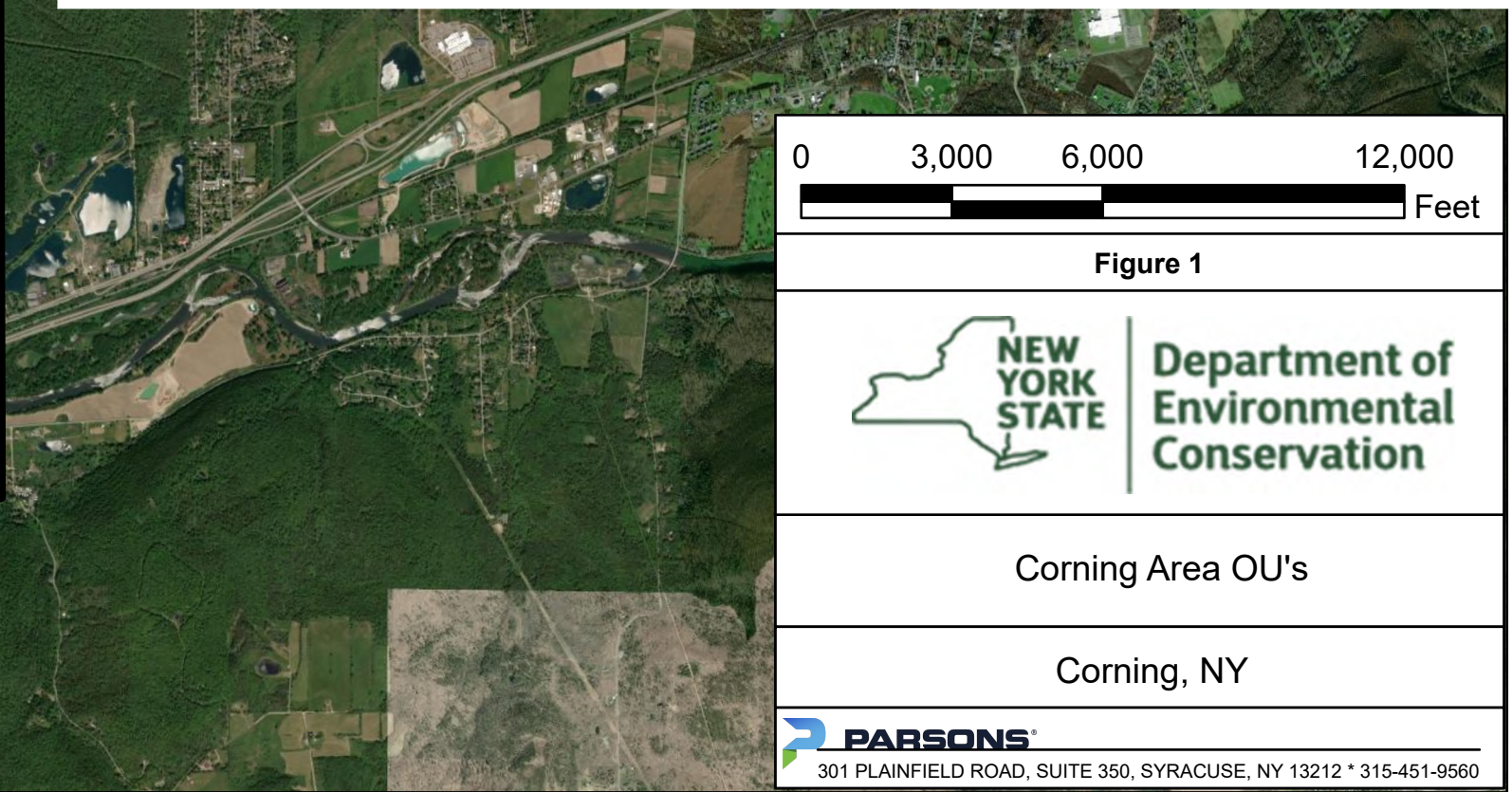


Legend

-  OU-1
-  OU-2
-  OU-3
-  OU-4
-  OU-5



0 150 300 600 Feet
**Site #851042 -
Corning Glass Works**



0 3,000 6,000 12,000 Feet

Figure 1



Corning Area OU's

Corning, NY

**Warning:
For Internal Use Only**

