
2026 WORK PLAN

REMEDIAL PROGRAM FOR THE GLASS MANUFACTURING WASTE DISPOSAL AREA

Prepared For:



**Department of
Environmental
Conservation**

New York State Department of Environmental Conservation
Division of Environmental Remediation
625 Broadway 12th Floor
Albany, New York 12233 – 7012

Prepared By:



301 Plainfield Road, Suite 350
Syracuse, New York 13212

MARCH 2026

TABLE OF CONTENTS

1.0 INTRODUCTION AND BACKGROUND	1
2.0 NYSDEC PRIORITIES	5
3.0 CURRENT STATUS AND LONG-TERM OUTLOOK.....	8
4.0 PROPOSED WORK.....	9
5.0 NEXT STEPS.....	11
5.1 Immediate Tasks	11
5.2 Annual Tasks	11
6.0 REFERENCES.....	12

LIST OF FIGURES

Figure 1: Glass Manufacturing Waste Disposal Area Site Confirmed/Suspected ABG properties

LIST OF ACRONYMS

<u>Acronym</u>	<u>Definition</u>
ABG	ash, brick, and/or glass
CAS	Community Accessibility Session
CSM	conceptual site model
GMWDA	Glass Manufacturing Waste Disposal Area
NYSDEC	New York State Department of Environmental Conservation
OU	operable unit
SMP	Site Management Plan
RCRA	Resource Conservation and Recovery Act
ROW	Right-of-way

1.0 INTRODUCTION AND BACKGROUND

NYSDEC, in consultation with the NYSDOH, is implementing an area-wide remedial program for contamination, including hazardous waste and/or hazardous substances related to former glass manufacturing operations in the Glass Manufacturing Waste Disposal Area (GMWDA), NYSDEC Site 851074 (the Site). A current map of areas with known or potential contamination, which are or may be associated with historical glass manufacturing and waste disposal area included as **Figure 1**.

Protecting public health and the environment from exposure to contamination from or associated with historic glass manufacturing and waste disposal in the Glass Manufacturing Waste Disposal Area is of utmost importance to NYSDEC. The number of hazardous waste sites, and areas of concern encompassed by the Site has increased dramatically over the past several years and, therefore, the NYSDEC is taking a broader, area-wide approach to addressing contamination from historical glass operations.

To guide this approach, the NYSDEC is seeking information and documentation that would allow for an expeditious and efficient remedial program for wastes from former glass manufacturing operations. Corning Incorporated has a long history of glass manufacturing and waste disposal in the GMWDA (since 1868) and previously acknowledged disposing of its waste within the same region.

In 2012, fill containing waste materials from former glass manufacturing processes, now known as ash, brick, and/or glass (ABG), was encountered during a capital improvement project at the Corning-Painted Post High School. Since 2012, approximately 70 locations have been identified as being disposal areas of ABG. NYSDEC has determined that Corning Incorporated's former plants generated ABG, which was subsequently disposed of throughout the GMWDA. The following former Corning Incorporated production plants went through RCRA closure before the disclosure of offsite disposal of hazardous materials:

- Corning Glass Works Plant – One Riverfront Plaza
- Steuben Plant/Fulton Street Facility – One Museum Way
- Fallbrook Plant – East Tioga Avenue
- Pressware Plant – One Steuben Street

Other locations that did not have RCRA interim status include Corning Incorporated's Vycor Plant and Corning Refractories.

Due to the age of Corning Incorporated's former plants, Corning Incorporated's specific operations and waste management practices are generally not known. However, historical records indicate that one of Corning Incorporated pre-cursor companies, Corning Glass Works, disposed of waste at multiple locations throughout the Glass Manufacturing Waste Disposal Area.



Corning Glass Works maintained ash dumps in Corning, New York at least as early as 1920. A November 1920 deed from the estate of Amory Houghton to Corning Homes, Inc. for properties in the Corning Study Area (NYSDEC Site No. 851046) includes a condition that “the Corning Glass Works, its successors and assigns shall forever have the right and privilege of maintaining the structures, buildings and ash dumps as now located.” The Study Area is comprised of the Houghton Plot.

In a letter dated August 17, 1978, Corning Incorporated’s predecessor, Corning Glass Works, disclosed to the New York State Department of Health that the company had used several locations throughout the GMWDA for the disposal of its waste. These locations are:

1. The Allen Dump on the Bailey Creek Road (now closed);
2. Houghton Plot on Corning's Northside (now paved and covered with homes);
3. A 'Reynolds' property on Route 414 (now covered by the 414 Club/Motel);
4. A George Elliott property on Route 414 known as Pine Hill;
5. A Callahan property on Route 414 (now covered with mini or temporary warehouse or storage facilities);
6. The River Road site in South Corning (assumed to be the South Corning Road properties, Site #851069).

Corning Incorporated further identified other areas of interest in its November 17, 2023 response to NYSDEC's Demand and Request for Information Related to NYSDEC Area-Wide Investigation of Hazardous Waste Contamination in the GMWDA, including but not limited to:

1. Pinewood Avenue, Corning, N.Y.
2. Erwin Manufacturing Site
3. Landfill behind Canada Road Facility
4. Watkins Glen Racetrack

5. Indian Hill Road
6. Houghton Park (Corning Northside complex)
7. Main Plant – Headquarters
8. VYCOR Lot
9. Gibson Scrapyard
10. Horseheads Holding Point
11. Allen Dump Bailey Creek Road
12. Erwin Landfill
13. Lindsey Landfill
14. Chemung Landfill
15. Bath Landfill

There are many other areas of concern and/or encounters with ABG. ABG has been observed and reported by residents during the Investigation and Site Characterization of the Glass Manufacturing Waste Disposal Area, such as during a water line replacement throughout a neighborhood in South Corning, along Watauga Avenue following recent utility work and numerous parcels throughout the GMWDA.

Additionally, former Corning Incorporated employees/contractors have provided information about past Corning Incorporated disposal at:

1. Van Etten (Site # 851061)
2. River Road (also admitted to by Corning Incorporated and assumed to be the South Corning Road properties, Site #851069)
3. Speer Drive
4. Steege Hill Road
5. Watkins Avenue
6. Bailey Creek Road
7. Corning Building Company (part of Vine Street Site # 851067)
8. Frederick Carter School
9. Mountainbrow Townhouses
10. Village of Riverside

It was a widespread practice for construction and demolition debris, including ash, brick and glass, to be used as fill to improve drainage, fill in low lying areas as an aid to development or address flood impacts. Several areas have been investigated, or are in the process of being investigated, and the presence of hazardous waste has been documented (e.g., Houghton Plot also known as the Study Area).

Corning Glass Works has also detailed its historic practice of discharging industrial wastewater into the Chemung River from its various plants located in the Glass Manufacturing Waste Disposal Area. See “Industrial Waste Water Discharges to the Chemung River” from Corning Glass Works Plants Located in Corning, New York dated April 15, 1967. In 2014, hazardous waste was documented in the outfall pipes of one of these plants, which discharges directly to the Chemung River. See Corning Incorporated Closure of Flood Control Valves #9, #10, and #10A, submitted by Corning Incorporated and dated November 7, 2014.

The Remedial Program for the Glass Manufacturing Waste Disposal Area is intended to complement ongoing investigation and remediation at sites across the GMWDA, including those for which Corning Incorporated has executed an Order on Consent or signed a Brownfield cleanup Agreement:

- 851046 Study Area
- 851051 Guthrie Centerway Property
- 851062 Guthrie Clinic North

851053 Post Creek
851061 Van Etten
851048 Corning Refractories
C851037 Former Fulton Finishing
C851037B Steuben Glass
C851031 Tioga Avenue

NYSDEC preliminary sites and/or IRMs sites:

851012 Dodge Avenue
851048 City of Corning Fire Department
851072 Townsend Avenue
851067 Vine Street
851066 Denison Park
851057 City of Corning Sewer Right of Way (within Denison Park)
851065 Woodview Avenue
851073 Rose Road
11094 River Road Spoils
851069 South Corning Road
851068 South Corning Spoils
851047 Centerway Pedestrian Bridge
851052 West Road
851055 William Street Park
851056 McKinney Park
851060 Stewart Park
851063 Conhocton Street Flood Control Berm Area
851064 Connector Street
851076 Pine Hill Road
851079 Pinewood Ave
851080 College Ave

Other sites where investigation and remediation of ABG has been completed by other parties include:

851054 Former Days Inn
C851049 Former City of Corning Hospital and Related Parcels
V00357 Corning Family YMCA

This work plan provides a detailed plan for 2026 for an area-wide remedial program for contamination, including hazardous waste and/or hazardous substances related to former glass manufacturing operations in the GMWDA with a special focus on more sensitive sites that threaten public health under the State Superfund (SSF) program. Priorities include homes, daycare centers, and places of recreation (i.e., parks and the Chemung River and its tributaries).

2.0 NYSDEC PRIORITIES

The overall organization and objectives of the remedial program for the Glass Manufacturing Waste Disposal Area are framed on the priorities identified by NYSDEC. When identifying these priorities the following were considered:

- Likelihood that an area of concern or property has released or has the potential to release hazardous substances into the environment; ABG has been shown to be hazardous and has been found throughout the GMWDA;
- Characteristics of the waste (e.g., toxicity and waste quantity); mostly inorganics (namely but not limited to arsenic, cadmium, and lead), and the volumes have been shown to be substantial; and
- People or sensitive environments (receptors) affected by the release, includes residential areas and places of recreation (parks and the Chemung River, including its tributaries), some areas are in or proximate to potential environmental justice areas or disadvantaged communities.

Overall, NYSDEC has the following goals for the remedial program for the Glass Manufacturing Waste Disposal Area:

- Notifications by property owners when ABG is encountered
 - How much investigation is needed to confirm the extent of ABG when ABG is encountered?
 - Proactively clear sensitive receptors (e.g., schools, daycares, places of recreation, residential)
 - The determination for short term responses or the presumptive remedy based on the observations of ABG.
- Site Management Approach
 - Develop a site management plan for the Glass Manufacturing Waste Disposal Area
 - Develop protocols for outreach/education and response to reports of encounters with ABG including notifications to property owners in proximity.
 - Property owners may dispose of inconsequential (small) amounts of ABG in household garbage. Larger amounts, or ABG generated by construction/ utility work, may require special handling and disposal. When in doubt, the property owner should contact the NYSDEC.
 - Incorporates presumptive approaches or short-term response actions where NYSDEC determines ABG may still pose a risk
 - Develop key messaging for property owners.
 - What to look for, who to contact, ways of minimizing exposures.
 - Periodic notifications and community updates
 - Implement the SM approach for areas where ABG has not yet been encountered.
 - Utilize educational outreach, where encounters with ABG would consider land use (e.g., residential), potential or known nature and extent, resources potentially impacted (e.g., creek) or potential for exposures when determining the need for tracking, response action or investigation.
 - All encounters, investigations and responses would collect relevant information related to known origin of materials encountered including glass fused to refractory brick, products or patented materials, cullet or other information useful for determining potentially responsible parties.
 - Handle reports of ABG similar to spills by responding to encounters.
- Provide the overall approach:
 - Institutional Controls: NYSDEC could employ a combination of the following:
 - Easements and environmental notices with property specific site management plans, where appropriate;

- Enforcement Tools - require individuals or companies to conduct or prohibit specific actions, sometimes in exchange for a release and imposition of an environmental easement and associated site management plan (e.g., consent orders); and/or
- Government Controls - include local laws or permits (e.g., county zoning, permits) in affected communities:

Informational Approaches - educate people about what to do when encountering glass manufacturing waste in the Glass Manufacturing Waste Disposal Area which might include:

- Public advisories through annual community availability sessions and newsletters, along with website and hotline; and/or
- Partnering with local Department of Public Works, utility providers, and other stakeholders to ensure the proper management of glass manufacturing waste.

Phase I Environmental Site Assessment (ESA) - evaluating the environmental condition of a commercial property may identify any potential environmental liabilities before a property transaction occurs, including some of the above institutional controls.

Using the Environmental Assessment Form (EAF) Mapper for the Part 1 State Environmental Quality Review Act (SEQR) form, the question concerning whether the site of the proposed action or an adjoining property been the subject of remediation (ongoing or completed) for hazardous waste, automatically gets checked 'Yes' based on 851074 Glass Manufacturing Waste Disposal Area.

An encounter with ABG within the Glass Manufacturing Waste Disposal Area which is reported to NYSDEC would result in a preliminary interview with the individual reporting the encounter and potentially an inspection to determine the extent of ABG and any potential exposure pathway.

- Tracking
 - Regular coordination meetings with NYSDEC and NYDOH
 - Maintain agenda, minutes, action item list, cost estimates, updated schedule and budget.
 - Tracking development and maintenance, with appropriate search functions and canned reports.
 - Track potential sites, including those with access sought/obtained, investigation started, not yet investigated, those preliminary screening completed and determined NA at this time, etc.
 - Track encounters with ABG.
 - Maintain interested stakeholder database.
 - Maintain sensitive receptor database – schools, daycares, recreational areas.
 - Estimate costs for remaining investigation and remediation based on assumptions, what's known at that time.
- Coordination
 - Coordinate with federal and state stakeholders (e.g., ACOE, NYSDEC mining and permits, NYSDEC operations, etc.).
 - Partner with Southern Tier Damage Prevention Council and utility providers across the Glass Manufacturing Waste Disposal Area to ensure ABG is properly managed when encountered (no investigation will be required in rights of way).
 - Track encounters with ABG.
 - Coordinate with affected municipalities.
- Outreach
 - The importance of a robust community and stakeholder outreach and communications plan cannot be overstated. Such a plan ensures that all affected parties are informed, engaged, and empowered throughout the process. It facilitates transparency, builds trust between the NYSDEC and the community, and enables the incorporation of local knowledge into decision-making processes. Moreover, effective communication helps to demystify complex technical information, making it

accessible to non-experts and ensuring that community concerns are addressed promptly and comprehensively.

- NYSDEC website - The NYSDEC site provides stakeholders with immediate access to updates, documents, contact information, and frequently asked questions.
- Community Liaison Plan – This evergreen document underscores a commitment to open, two-way communication, ensuring that community members are not only kept informed about project developments but also have a dedicated channel for voicing their concerns, questions, and suggestions.
 - Newsletter – These offer a regular, reliable source of information, updating the community and other interested parties on project progress, upcoming events, and key milestones.
 - Community Availability Session - These sessions provide a direct platform for open dialogue between the project team and the community.
 - Project Hotline - This hotline is used by the public to report observations of or encounters with ABG.
 - Project website - <https://dec.ny.gov/environmental-protection/site-cleanup/regional-remediation-project-information/region-8/cleanup-within-corning-area>
 - This public availability webpage provides an update on the ongoing investigation and cleanup actions, offers information and resources for the public, and provides a sharing platform of all materials presented in past Public Availability Sessions and Communications.
- Interacting with the Public and Evaluating Reports of ABG – The flow chart has been developed and maintained that explains how NYSDEC will respond and track interactions with property owners within the GMWDA.
- Research
 - Research into the disposal practices of all glass manufacturers in the GMWDA.
 - Research into the potential for waste disposal impacts sensitive receptors such as waterways, residential properties, schools and daycare facilities.

3.0 CURRENT STATUS AND LONG-TERM OUTLOOK

Category	Status as of October 2025	Long Term Outlook
Investigation	<ul style="list-style-type: none"> Completed Investigations at Two Remaining Corning Schools (No ABG Found) 	<ul style="list-style-type: none"> Respond to additional properties with reported encounters of ABG.
Site Management Approach	<ul style="list-style-type: none"> Draft GMWDA SMP Started 	<ul style="list-style-type: none"> Transition to SM approach for areas outside of ongoing sites/investigations
Tracking	<ul style="list-style-type: none"> Tracking maintained with Latest Site Information, Reports and Historical Documents 	<ul style="list-style-type: none"> Tracking will be expanded to the Glass Manufacturing Waste Disposal Area
Coordination	<ul style="list-style-type: none"> To date has been 'as needed,' except for routine coordination with federal stakeholders which is conducted quarterly. 	<ul style="list-style-type: none"> Looking to formalize with various stakeholders, set up routine calls and develop written agreements on notice and BMPs, Coordinate with municipalities and utility providers, including sharing ABG expectations for work in rights of way.
Outreach	<ul style="list-style-type: none"> Community Availability Session Regarding IRM Work Plans for Corning Parks 	<ul style="list-style-type: none"> Maintain documents, webpages, hotline and email, mailings for property specific briefings, and perform annual outreach activities.
Research	<ul style="list-style-type: none"> Continued research, as appropriate 	<ul style="list-style-type: none"> Continue research, as appropriate

4.0 PROPOSED WORK

Category	Proposed 2026 Priority Activities	Contingency Activities*
Investigation	<ul style="list-style-type: none"> • Develop an investigation work plan for the Chemung River and its tributaries under an operable unit of 851042 Corning Glass Works, excluding the area of interest for the Tioga Avenue site • Complete investigations when appropriate at properties with new encounters of ABG. <ul style="list-style-type: none"> ○ Coordinate access ○ Develop investigation work plans as required ○ Perform field sampling for ABG and analytical analyses for COCs ○ Report investigation findings 	<ul style="list-style-type: none"> • Evaluate potential new sites
Site Management Approach	<ul style="list-style-type: none"> • Develop and implement GMWDA site management plan 	
Tracking	<ul style="list-style-type: none"> • Expand tracking to the Glass Manufacturing Waste Disposal Area . 	
Coordination	<ul style="list-style-type: none"> • Continue communication with federal and state stakeholders, (Quarterly). • Coordinate with municipal leaders and utility stakeholders (Annually) • Develop and implement a formal reporting system for utility stakeholders • Coordination with other entities (e.g., ACOE, NYSDEC mining and permits, NYSDEC operations, etc.) to track encounters with ABG, (As Needed). • Coordinate with municipalities and utility providers, including sharing ABG expectations for work in rights of way. 	
Outreach	<ul style="list-style-type: none"> • Update NYSDEC website(s) • Issue 2026 newsletter • Update the Liaison Plan (As Needed) • Hold Community Availability Session 	<ul style="list-style-type: none"> • Develop Spotlight

Category	Proposed 2026 Priority Activities	Contingency Activities*
	<ul style="list-style-type: none"> • Maintain project hotline (Continuous) • Mailings for property specific briefings (As Needed) 	
Research	<ul style="list-style-type: none"> • Continue ongoing research and discussions on : <ul style="list-style-type: none"> • Aerial deposition from past glass manufacturing/disposal practices. • Potential presence of emerging contaminants (PFAS, 1,4-dioxane, etc.) in soil and sediments related to Corning Incorporated operations to determine if further evaluation/investigation is warranted. • Impacts to groundwater from borosilicate glass waste 	<ul style="list-style-type: none"> • Evaluate EPA's new residential lead policy as it evolves under State programs

5.0 NEXT STEPS

5.1 Immediate Tasks

In preparation for 2026, Parsons will start the following activities in the fourth quarter of 2025.

1. Prepare and submit 2026 project schedule for NYSDEC review and approval.
2. Prepare and submit 2026 budget for NYSDEC review and approval and, if necessary, a work assignment budget amendment.

5.2 Annual Tasks

This annual reporting mechanism is designed to ensure accountability, facilitate adaptive management based on real-world insights, and maintain a clear line of communication with NYSDEC regarding our collective progress toward project goals.

At least 90 days before the start of the calendar year 2027, a work plan detailing the actions proposed to be taken during the upcoming calendar year will be submitted for NYSDEC's review, prioritization and approval.

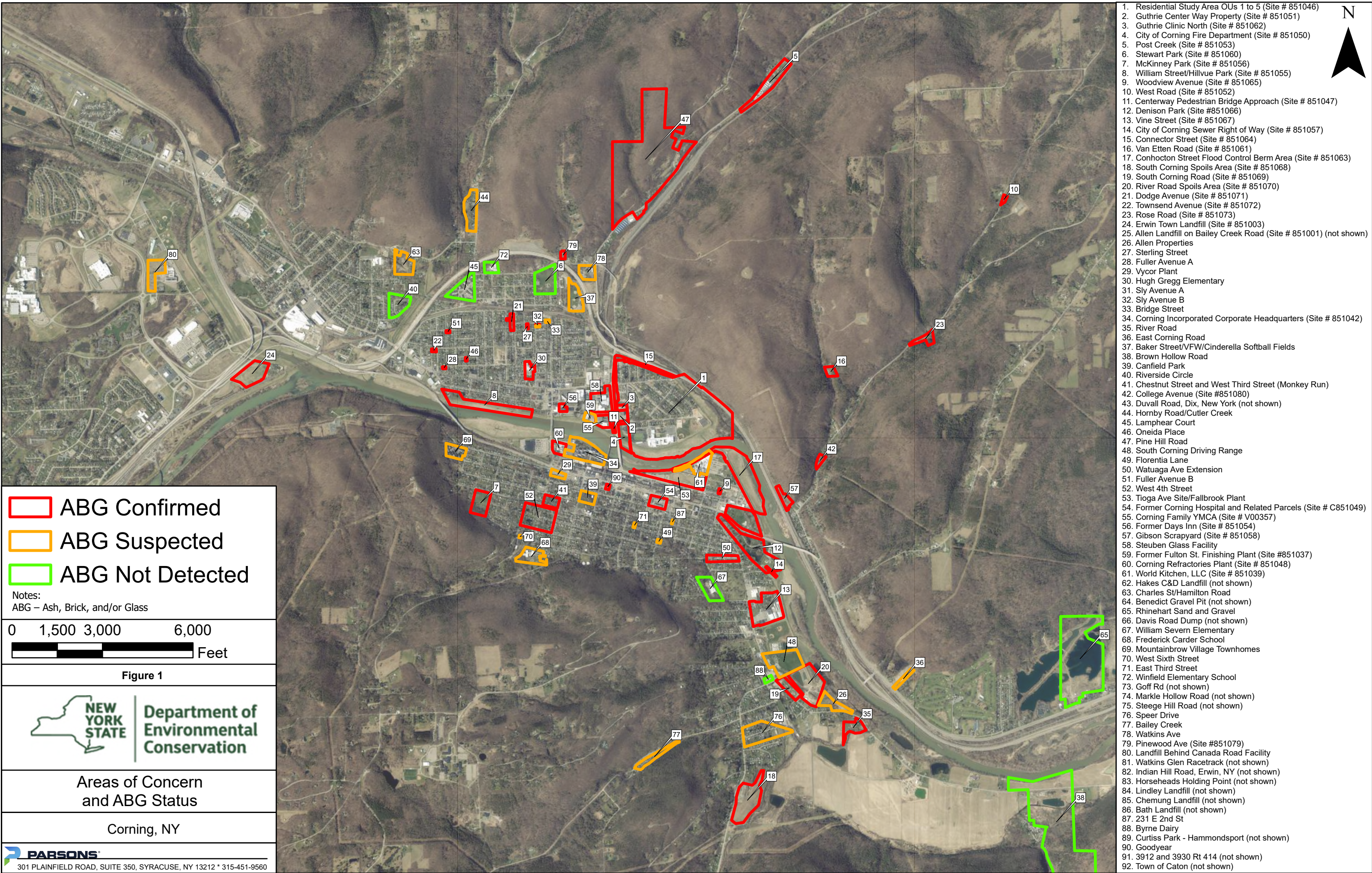
Concurrently, an annual report will be prepared and submitted to NYSDEC, encapsulating the progress, achievements, and challenges encountered throughout the project. This report will summarize the activities undertaken during the year, providing a transparent account of both accomplishments and any deviations from planned actions, along with justifications for such deviations. It will assess the effectiveness of current approaches and procedures, drawing on practical experiences to recommend adjustments or improvements where necessary. Additionally, the report will include a prioritized list of recommended activities for attention in the upcoming year, aligning future actions with strategic objectives and ensuring that resources are directed toward areas of greatest need.

6.0 REFERENCES

NYSDEC. 2025. *Environmental Cleanup Within the Corning Area*. <https://dec.ny.gov/environmental-protection/site-cleanup/regional-remediation-project-information/region-8/cleanup-within-corning-area>

NYSDEC. 2025. Community Liaison Plan, Environmental Cleanup in the Greater Corning, NY area Steuben County.

FIGURES



1. Residential Study Area OUs 1 to 5 (Site # 851046)
2. Guthrie Center Way Property (Site # 851051)
3. Guthrie Clinic North (Site # 851062)
4. City of Corning Fire Department (Site # 851050)
5. Post Creek (Site # 851053)
6. Stewart Park (Site # 851060)
7. McKinney Park (Site # 851056)
8. William Street/Hillvue Park (Site # 851055)
9. Woodview Avenue (Site # 851065)
10. West Road (Site # 851052)
11. Centerway Pedestrian Bridge Approach (Site # 851047)
12. Denison Park (Site #851066)
13. Vine Street (Site # 851067)
14. City of Corning Sewer Right of Way (Site # 851057)
15. Connector Street (Site # 851064)
16. Van Etten Road (Site # 851061)
17. Conhocton Street Flood Control Berm Area (Site # 851063)
18. South Corning Spoils Area (Site # 851068)
19. South Corning Road (Site # 851069)
20. River Road Spoils Area (Site # 851070)
21. Dodge Avenue (Site # 851071)
22. Townsend Avenue (Site # 851072)
23. Rose Road (Site # 851073)
24. Erwin Town Landfill (Site # 851003)
25. Allen Landfill on Bailey Creek Road (Site # 851001) (not shown)
26. Allen Properties
27. Sterling Street
28. Fuller Avenue A
29. Vycor Plant
30. Hugh Gregg Elementary
31. Sly Avenue A
32. Sly Avenue B
33. Bridge Street
34. Corning Incorporated Corporate Headquarters (Site # 851042)
35. River Road
36. East Corning Road
37. Baker Street/VFW/Cinderella Softball Fields
38. Brown Hollow Road
39. Canfield Park
40. Riverside Circle
41. Chestnut Street and West Third Street (Monkey Run)
42. College Avenue (Site #851080)
43. Duvall Road, Dix, New York (not shown)
44. Hornby Road/Cutler Creek
45. Lamphear Court
46. Oneida Place
47. Pine Hill Road
48. South Corning Driving Range
49. Florentia Lane
50. Watuaga Ave Extension
51. Fuller Avenue B
52. West 4th Street
53. Tioga Ave Site/Fallbrook Plant
54. Former Corning Hospital and Related Parcels (Site # C851049)
55. Corning Family YMCA (Site # V00357)
56. Former Days Inn (Site # 851054)
57. Gibson Scrapyard (Site # 851058)
58. Steuben Glass Facility
59. Former Fulton St. Finishing Plant (Site #851037)
60. Corning Refractories Plant (Site # 851048)
61. World Kitchen, LLC (Site # 851039)
62. Hakes C&D Landfill (not shown)
63. Charles St/Hamilton Road
64. Benedict Gravel Pit (not shown)
65. Rhinehart Sand and Gravel
66. Davis Road Dump (not shown)
67. William Severn Elementary
68. Frederick Carder School
69. Mountainbrow Village Townhomes
70. West Sixth Street
71. East Third Street
72. Winfield Elementary School
73. Goff Rd (not shown)
74. Markle Hollow Road (not shown)
75. Steege Hill Road (not shown)
76. Speer Drive
77. Bailey Creek
78. Watkins Ave
79. Pinewood Ave (Site #851079)
80. Landfill Behind Canada Road Facility
81. Watkins Glen Racetrack (not shown)
82. Indian Hill Road, Erwin, NY (not shown)
83. Horseheads Holding Point (not shown)
84. Lindley Landfill (not shown)
85. Chemung Landfill (not shown)
86. Bath Landfill (not shown)
87. 231 E 2nd St
88. Byrne Dairy
89. Curtiss Park - Hammondsport (not shown)
90. Goodyear
91. 3912 and 3930 Rt 414 (not shown)
92. Town of Caton (not shown)

ABG Confirmed

ABG Suspected

ABG Not Detected

Notes:
ABG – Ash, Brick, and/or Glass

0 1,500 3,000 6,000
Feet

Figure 1

Department of
Environmental
Conservation

Areas of Concern
and ABG Status

Corning, NY

301 PLAINFIELD ROAD, SUITE 350, SYRACUSE, NY 13212 * 315-451-9560