

(Fact Sheet Begins Next)

Act Now to Continue Receiving Information About This Site!

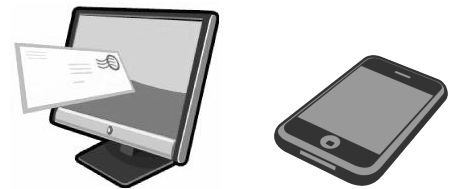
DEC's Division of Environmental Remediation (DER) now distributes information about contaminated sites electronically by email.

If you would like to continue to receive information about the contaminated site featured in this fact sheet:

You must sign up for the DER email listserv:

www.dec.ny.gov/chemical/61092.html

DER cannot register your email address - only the email address owner can do so. If you already have signed up for the listserv for the county in which the site is located, you need do nothing.



Why You Should Go “Paperless”:

- ☒ Get site information faster and share it easily;
- ☒ Receive information about all sites in a chosen county - read what you want, delete the rest;
- ☒ It helps the environment and stretches your tax dollars.

If “paperless” is not an option for you, call or write to the DER project manager identified in this fact sheet. Indicate that you need to receive paper copies of fact sheets through the Postal Service. Include the site name in your correspondence. The option to receive paper is available to individuals only. Groups, organizations, businesses, and government entities are assumed to have email access.



Department of
Environmental
Conservation

Where to Find Information

Access project documents through the DECinfo Locator and at these location(s):

<https://www.dec.ny.gov/data/DecDocs/859021/>

Newark Public Library*

121 High Street
Newark, NY 14513
(315) 331-4370

**Repositories may be temporarily unavailable due to Novel Coronavirus (COVID-19) precautions. If you cannot access the online repository, please contact the NYSDEC project manager listed below for assistance*

Who to Contact

Comments and questions are welcome and should be directed as follows:

Project-Related Questions

Michael Squire, Project Manager
NYSDEC
625 Broadway
Albany, NY 12233
(518) 402-9546
Michael.Squire@dec.ny.gov

Project-Related Health Questions

Stephen Lawrence
NYSDOH
ESP Corning Tower, RM 1787
Albany, NY 12237
(518) 402-0450
BEEI@health.ny.gov

For more information about New York's
Manufactured Gas Plant Program, visit:
<http://www.dec.ny.gov/chemical/8430.html>

FACT SHEET

Manufactured Gas Plant Program

NYSEG - Newark MGP
125 North Main Street
Newark, NY 14513

October 2020

SITE No. 859021
NYSDEC REGION 8

Cleanup Action to Begin at Manufactured Gas Plant Site

Action is about to begin that will address contamination related to the New York State Electric & Gas Corporation (NYSEG) Newark Former Manufactured Gas Plant (MGP) Site ("site") located at 125 North Main Street, Newark, Wayne County. Please see the site location map (Figure 1). The cleanup activities will be performed by NYSEG ("remedial party") with oversight provided by the New York State Department of Environmental Conservation (NYSDEC).

Remedial activities for Excavation Area A (i.e., north of West Shore Boulevard) are expected to begin in November 2020, and last approximately two months. Remedial activities for Excavation Area B (i.e., West Shore Boulevard and Newark Garden Inn parking lot) will begin by the end of first quarter of 2021 and completed by Spring/Summer 2021, and last approximately 4 months. See Figure 2 for excavation areas. The estimated cost to implement the remedy is \$3,100,000. How to Access Site Related Documents:

- Access project documents online through the DECinfo Locator: <https://www.dec.ny.gov/data/DecDocs/859021/>
- Documents also are available at the location(s) identified at left under "Where to find information."

Highlights of the Upcoming Cleanup Activities: The goal of the cleanup action for the site is to achieve cleanup levels that protect public health and the environment. The key components of the remedy are:

- Excavation and off-site disposal of contaminated surface and subsurface soil to depths ranging from 3 to 9 feet below ground surface (bgs) in Excavation Area A (see figure).
- Excavation and off-site disposal of contaminated surface and subsurface soils to a depth of 15 feet below ground surface (bgs) in Excavation Area B.
- A total of approximately 6,000 cubic yards of material will be removed from Areas A and B and treated via low temperature thermal desorption to remove contamination from the soil.
- Backfilling excavation areas with clean imported fill material meeting soil cleanup objectives (SCOs) for commercial use and groundwater protection.
- Constructing a site cover consisting either of structures (buildings, pavement, sidewalk) or a soil cover consisting of the 1-foot of soil meeting SCOs for commercial use.
- A site-specific health and safety plan (HASP) and a Community Air Monitoring Plan (CAMP) will be implemented during remediation activities. The HASP and CAMP establish procedures to protect on-site workers and

residents and includes required air monitoring as well as dust and odor suppression measures.

- Implementing institutional controls in the form of an environmental easement.
- Developing a Site Management Plan (SMP) that describes the post-remedial action monitoring to be completed, including groundwater monitoring to assess effectiveness of the remedy.

Next Steps: After cleanup activities are completed, NYSEG will prepare a Final Engineering Report (FER). The FER will describe the cleanup activities completed and certify that cleanup requirements have been achieved or will be achieved. NYSDEC will keep the public informed throughout the cleanup of the site.

Site Description: The site consists of an approximately 1.0-acre area located within a mixed commercial and residential area in the central business district in the Village of Newark. The site is located west of Route 88 (North Main Street) between the New York State Barge Canal and the former railroad. The southern portion of the site is occupied by a portion of the Newark Garden Hotel and parking lot (see Figure 3). The northern portion of the site is overlain by West Shore Boulevard. The site was operated as an MGP from circa 1900 into the 1920s. Former MGP structures were removed by 1974 and a hotel was constructed sometime between 1974 and 1985. Construction of West Shore Boulevard began in approximately 1985.

Additional site details, including environmental and health assessment summaries, are available on NYSDEC's Environmental Site Remediation Database (by entering the site ID, 859021) at:

<https://www.dec.ny.gov/cfm/xtapps/derexternal/index.cfm?pageid=3>

Summary of the Investigation: Site surface and subsurface soil and groundwater samples were collected and analyzed for volatile organic compounds (VOCs), volatile organic compounds (SVOCs), metals, pesticides, polychlorinated biphenyls, and cyanide. Based upon laboratory results, the primary contaminants of concern for the site are coal tar, VOCs (specifically benzene, toluene, ethylbenzene, and xylenes [BTEX]), select polynuclear aromatic hydrocarbons. Laboratory groundwater sample results were compared to New York State Ambient Water Quality Standards. The primary contaminants of concern in groundwater are VOCs, SVOCs.

Manufactured Gas Plant Program: New York's MGP Program oversees the investigation and cleanup of former manufactured gas plants. The gas manufacturing process involved the heating of coal and/or petroleum products to produce a gas mixture. Once cooled and purified, the gas was distributed through a local pipeline network. The gas was used for heating and cooking in much the same way that natural gas is used today. In the early years, the gas was also used for lighting in homes and streetlights. For more information about the MGPs, visit:

<http://www.dec.ny.gov/chemical/8430.html>

We encourage you to share this fact sheet with neighbors and tenants, and/or post this fact sheet in a prominent area of your building for others to see.

Stay Informed With DEC Delivers

Sign up to receive site updates by email:

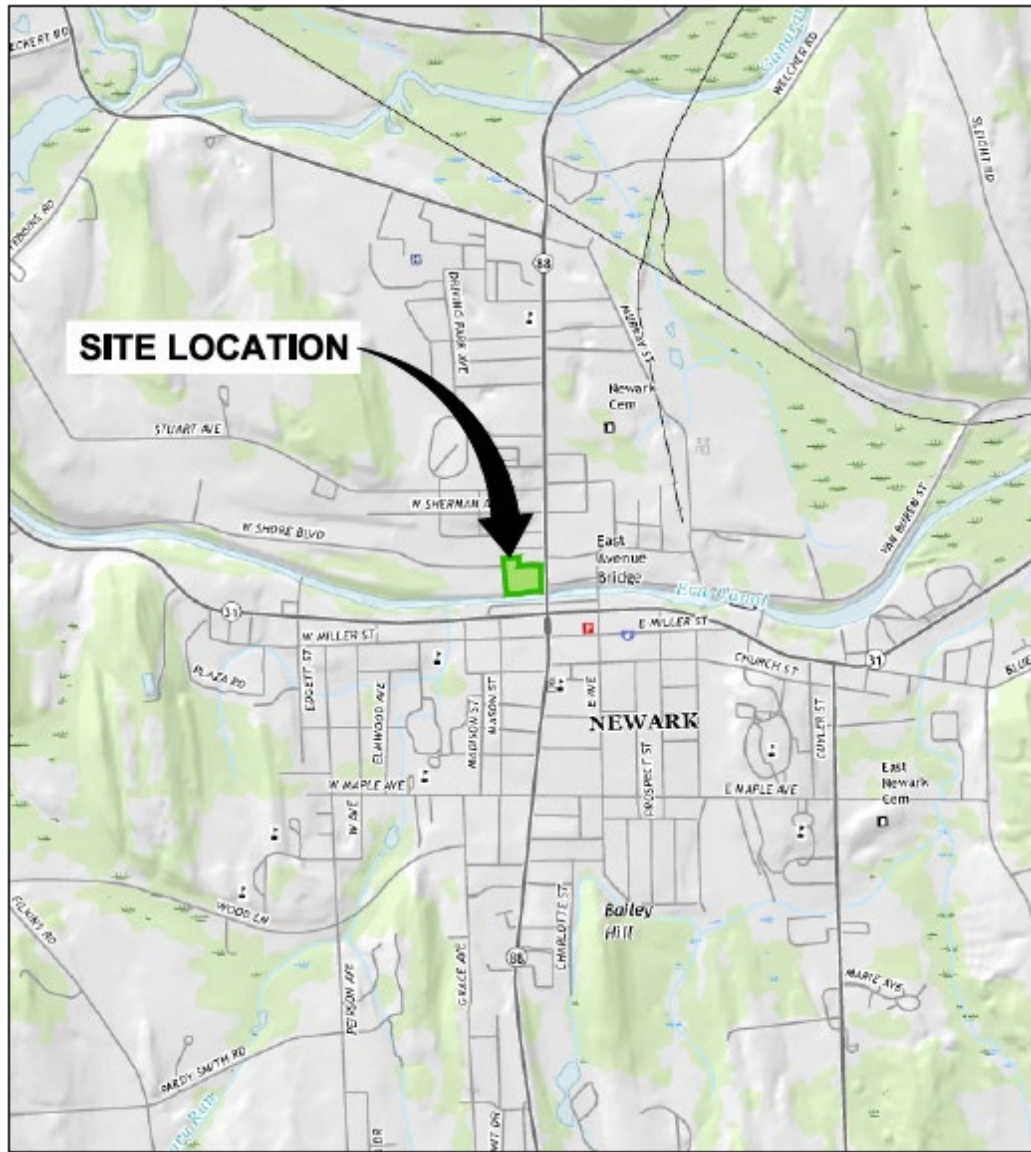
www.dec.ny.gov/chemical/61092.html

Note: Please disregard if you already have signed up and received this fact sheet electronically.

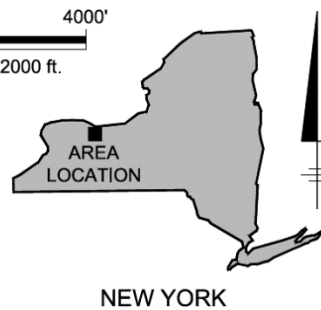
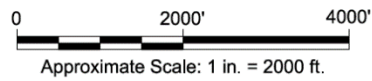
DECinfo Locator

Interactive map to access DEC documents and public data about the environmental quality of specific sites: <https://www.dec.ny.gov/pubs/109457.html>

Figure 1 – Site Location Map



REFERENCE: BASE MAP USGS 7.5 MIN. TOPO. QUAD., NEWARK, NY, 2016.



MANUFACTURED GAS PLANT PROGRAM

Figure 2 - General Excavation Plan



MANUFACTURED GAS PLANT PROGRAM

Figure 3 – Extent of Former MGP Works

