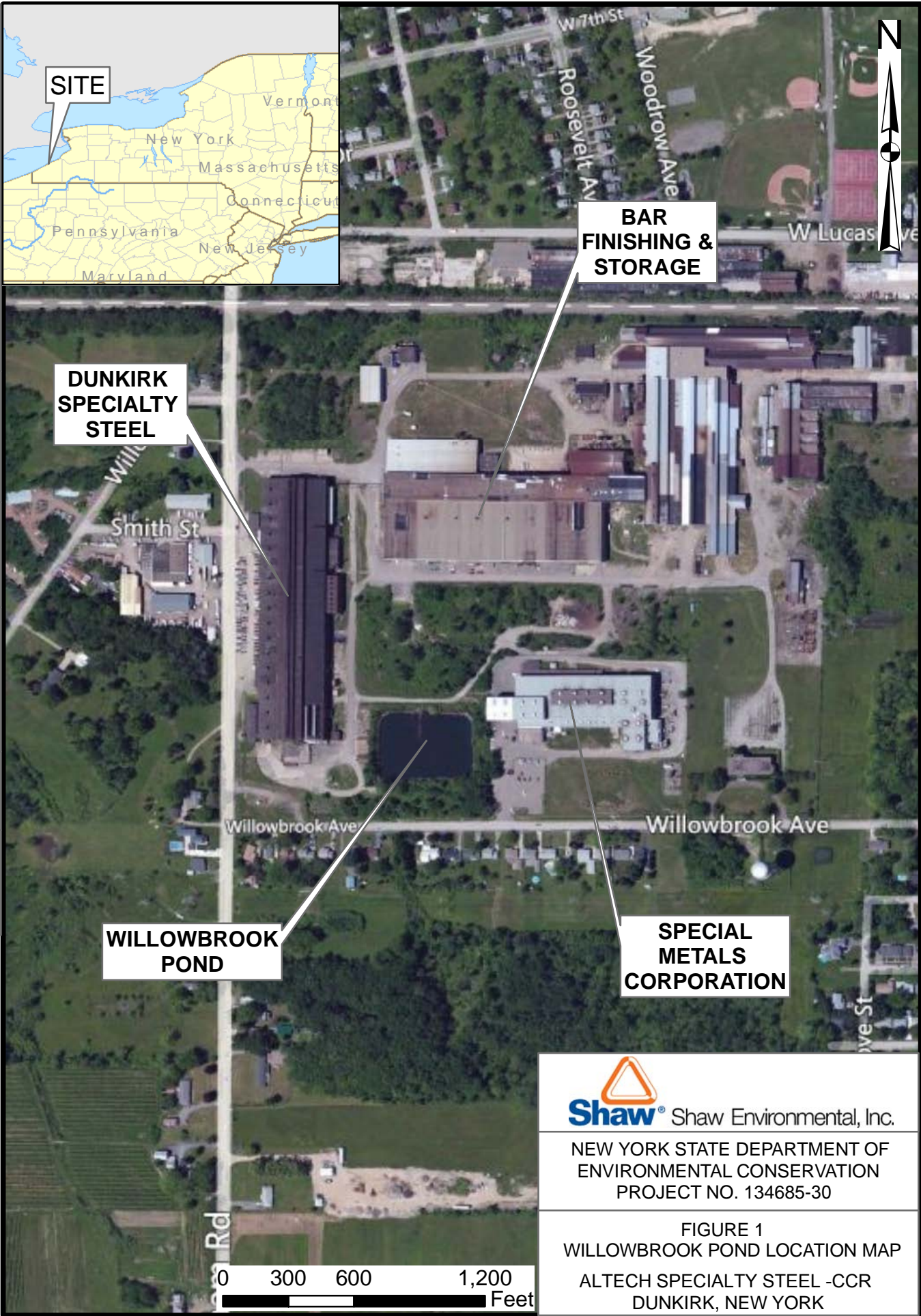
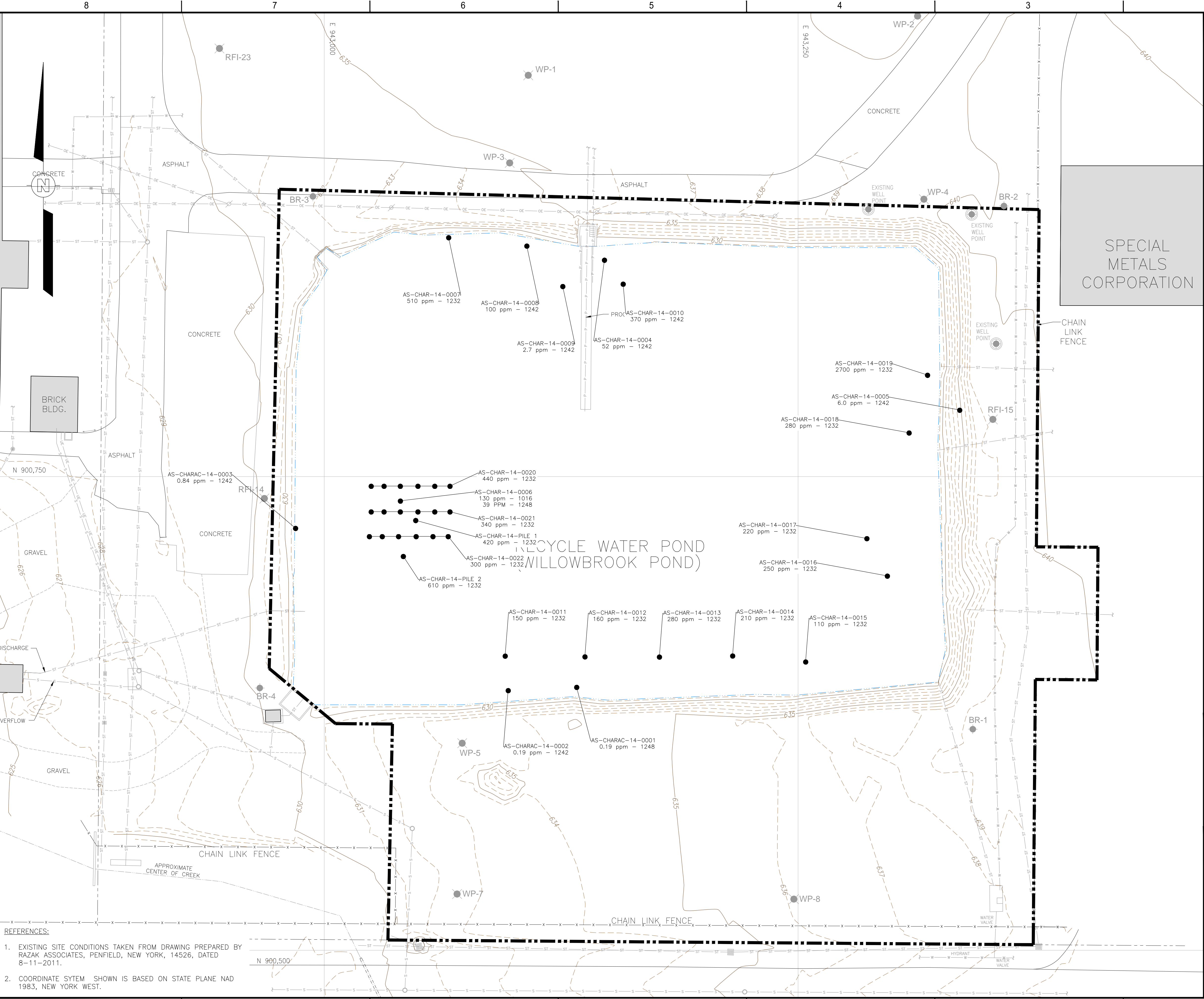


OFFICE	DATE	DESIGNED BY	DRAWN BY	CHECKED BY	APPROVED BY	DRAWING NUMBER
LATHAM, NY	09/30/15	MJS	MJS	DG	MJS	134685-229A1







LEGEND:

● CONFIRMATORY SAMPLE LOCATION (mg/kg)


NOTES:

1. RESULTS SHOWN HAVE NOT BEEN VALIDATED.

2. EXCAVATION LIMITS ARE APPROXIMATE.



REV	DESCRIPTION / ISSUE	DATE	APPROVED



**Shaw E & I Engineering of New York, P.C.**

DESIGNED BY:  
M. SAUSVILLE

DRAWN BY:  
D. GARDNER

CHECKED BY:  
M. SAUSVILLE

APPROVED BY:  
M. SAUSVILLE

NEW YORK STATE  
DEPARTMENT OF ENVIRONMENTAL  
CONSERVATION

WASTE CHARACTERIZATION & SAMPLE LOCATION

ALTECH SPECIALTY STEEL  
CONTRACT NO. D008535  
DUNKIRK, NEW YORK

DATE:  
09/30/15

SCALE:  
AS SHOWN

DRAWING NO.  
134685-Figure 5

SHEET NO.

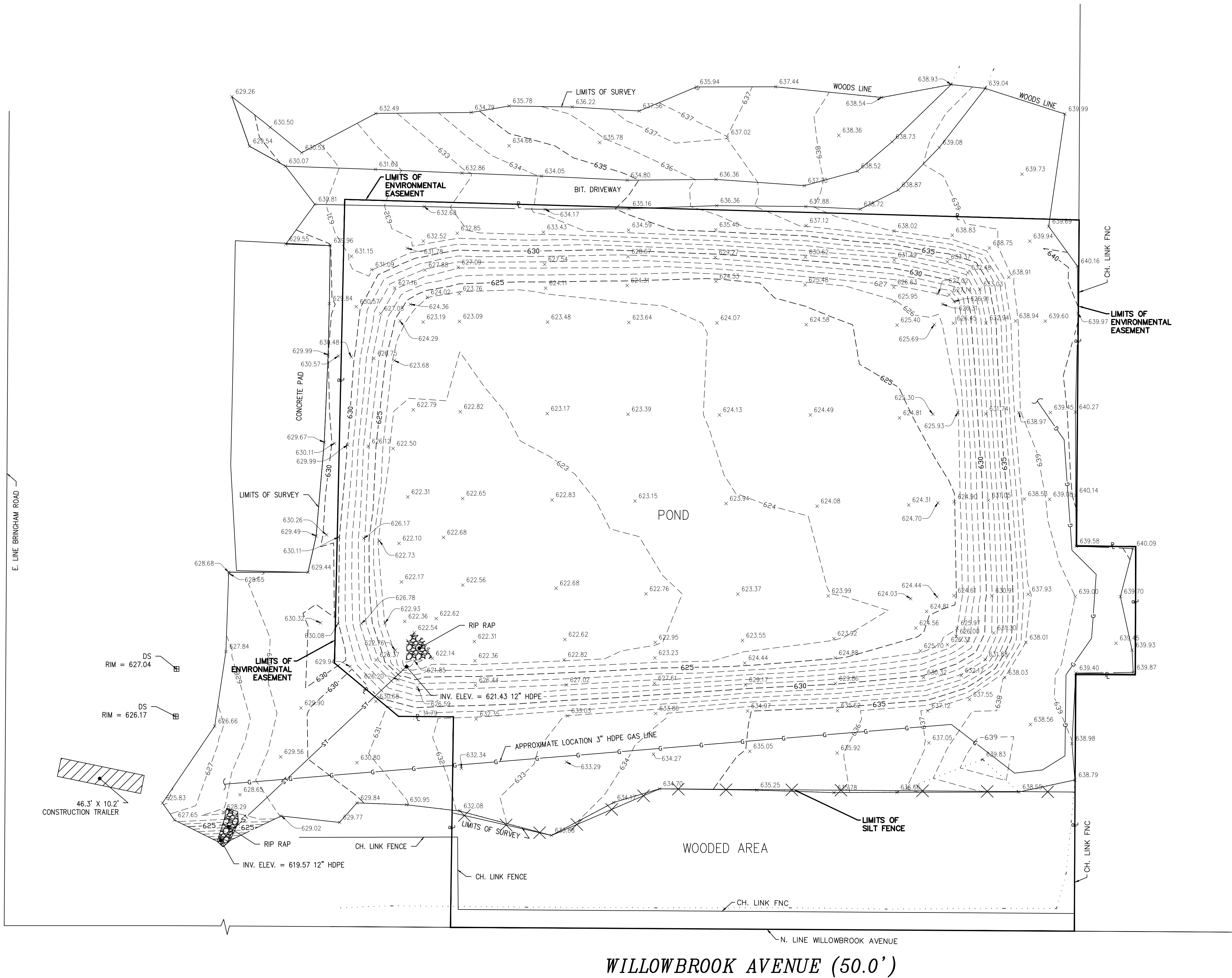
REFERENCES:

1. EXISTING SITE CONDITIONS TAKEN FROM DRAWING PREPARED BY RAZAK ASSOCIATES, PENFIELD, NEW YORK, 14526, DATED 8-11-2011.

2. COORDINATE SYTEM SHOWN IS BASED ON STATE PLANE NAD 1983, NEW YORK WEST.



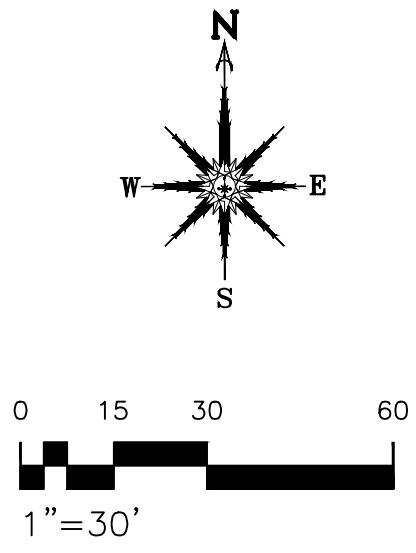
BRIGHAM ROAD (100.00')



**GENERAL NOTES:**

- HORIZONTAL DATUM IS REFERENCED TO THE NORTH AMERICAN DATUM OF 1983 (NAD83), NEW YORK STATE PLANE COORDINATE SYSTEM, WESTERN ZONE AS PER PLANS BY SHAW, DRAWING NUMBER 134685-22D8, DATED APRIL 19, 2013.
- VERTICAL DATUM IS SITE SPECIFIC.
- FINAL CONDITIONS SHOWN ON THIS MAP ARE FROM INFORMATION GATHERED BY WENDEL ON JUNE 18, 2015.

LEGEND:	
	FENCE (TYPE NOTED)
	GAS LINE
	MAJOR CONTOUR LINE
	MINOR CONTOUR LINE
	LIMITS OF SURVEY
	PROPERTY LINE/ LIMITS OF ENVIRONMENTAL EASEMENT
	STORM LINE
	WOODS LINE
CH.=CHAIN	INV.=INVERT
BIT.=BITUMINOUS	HDPE=HIGH DENSITY POLYETHYLENE
DS=DRAINAGE STRUCTURE	
ELEV.=ELEVATION	
FNC=FENCE	
	x 635.05 GROUND ELEVATION



PREPARED FOR  
HORIZON ENVIRONMENTAL

590A GALLERY ROAD  
CRANBERRY TOWNSHIP, PA  
16066

DEPARTMENT OF  
ENVIRONMENTAL CONSERVATION  
DIVISION OF ENVIRONMENTAL  
REMEDIATION  
ALTECH SPECIALTY STEEL OU2A  
WILLOWBROOK POND CLOSURE  
SITE NO.: 907022  
CONTRACT NO.: D008535  
CITY OF DUNKIRK  
CHAUTAUQUA COUNTY,  
NEW YORK

Shaw E & I Engineering of New York, P.C.



Centerpointe Corporate Park  
375 Esplanade Road, Suite 200  
Williamsport, NY 14221  
www.wendelcompanies.com  
p 716.686.0766 f 716.625.6825  
Wendel WD Architecture, Engineering, Surveying and  
Landscape Architecture P.C.

NOTE:  
THIS DOCUMENT, AND THE IDEAS AND DESIGNS INCORPORATED HEREIN, AS AN INSTRUMENT OF PROFESSIONAL SERVICE, IS THE PROPERTY OF WENDEL. NO ARCHITECTURAL, ENGINEERING, SURVEYING AND LANDSCAPE ARCHITECTURE, P.C. AND IS NOT TO BE USED IN WHOLE OR IN PART, FOR ANY OTHER PROJECT WITHOUT THE WRITTEN AUTHORIZATION OF WENDEL. UNAUTHORIZED ALTERATION OR ADDITION TO ANY SURVEY, DRAWING, DESIGN, SPECIFICATION, PLAN OR REPORT IS A VIOLATION OF SECTION 7209, PROVISION 2 OF THE NEW YORK STATE EDUCATION LAW.

NO.	REVISIONS	DATE
BY		
DWG. TITLE		

FIGURE 4  
FINAL SURVEY

DATE	9/30/2015		
SCALE	1"=30'		
DWN.	BSS	CHK.	RNJ
PROJ. No.	426906		
SHT. No.			

FIGURE 4

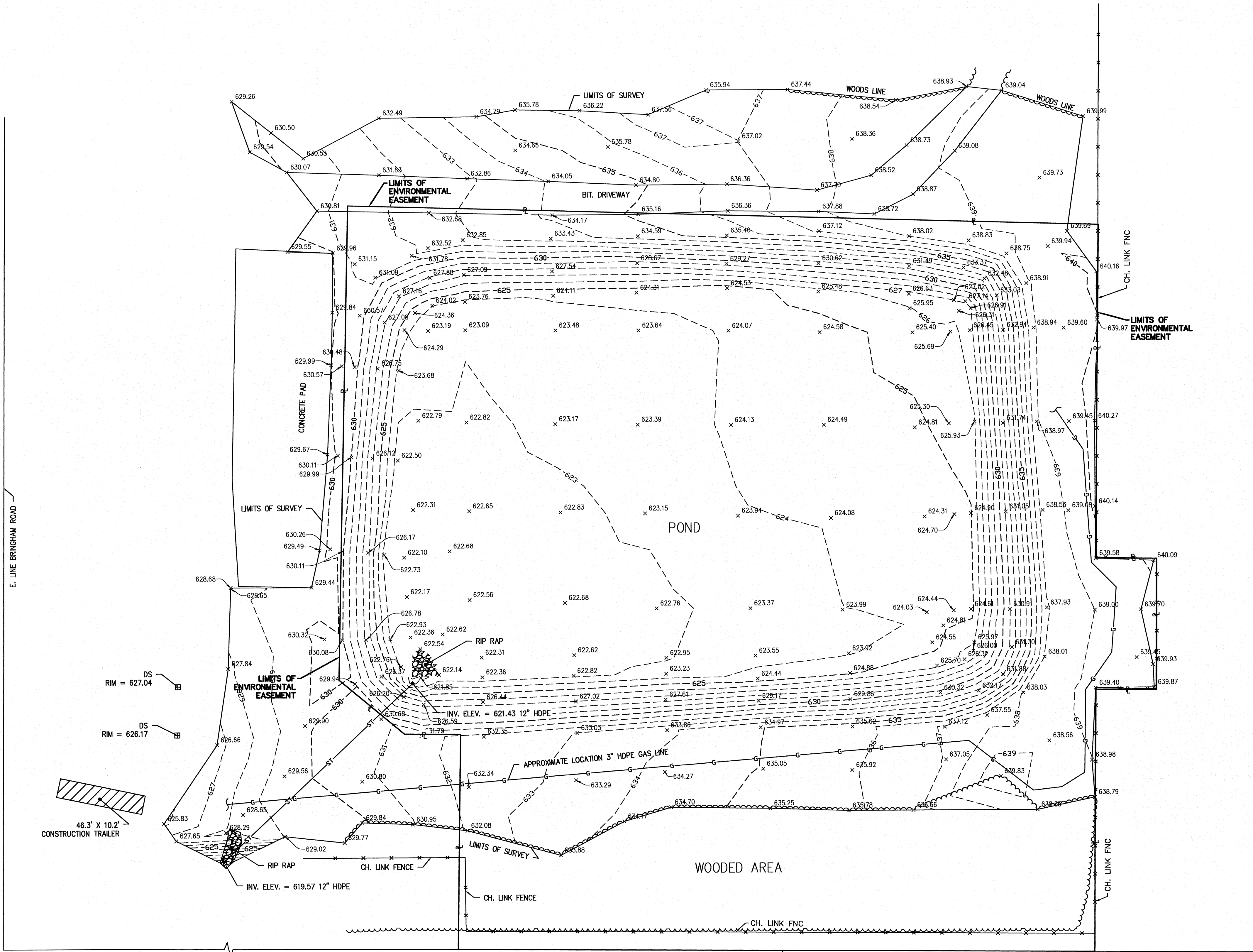


BRICHAM ROAD (100.00')

E. LINE BRIGHAM ROAD

N. LINE WILLOWBROOK AVENUE

WILLOWBROOK AVENUE (50.0')

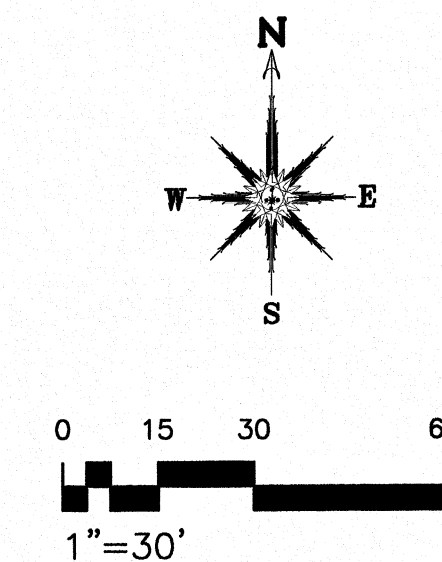
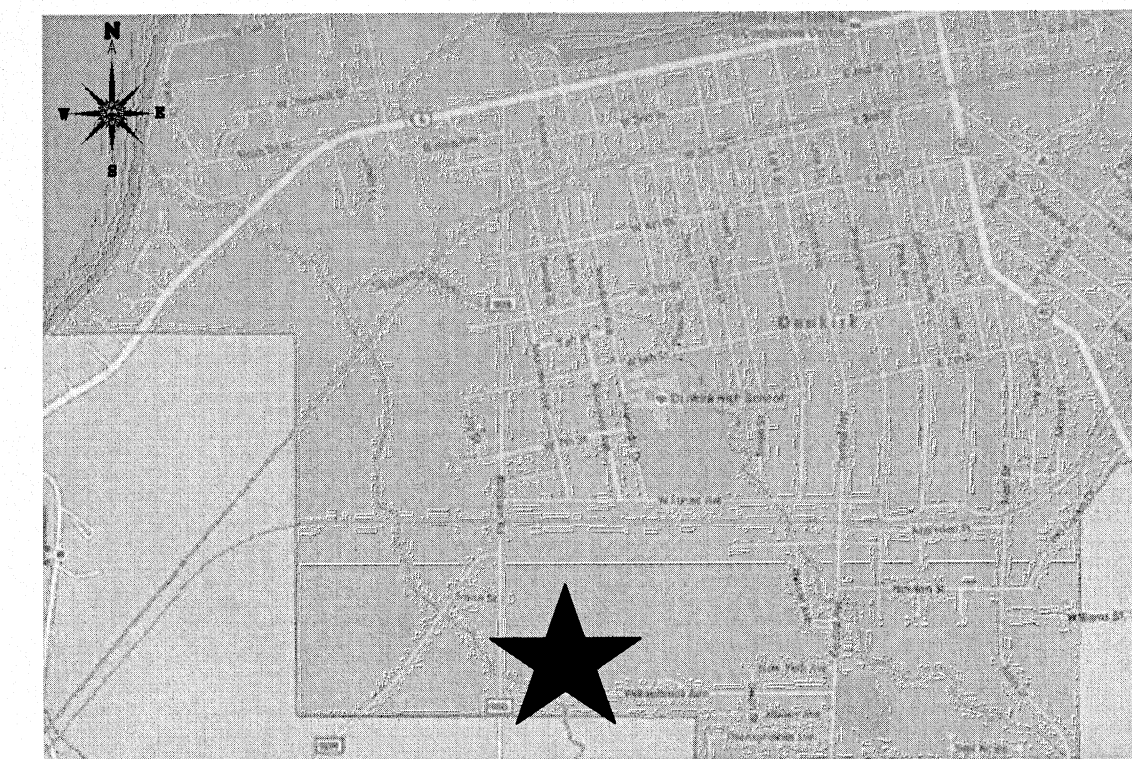


#### GENERAL NOTES:

- HORIZONTAL DATUM IS REFERENCED TO THE NORTH AMERICAN DATUM OF 1983 (NAD83), NEW YORK STATE PLANE COORDINATE SYSTEM, WESTERN ZONE AS PER PLANS BY SHAW, DRAWING NUMBER 134685-22D8, DATED APRIL 19, 2013.
- VERTICAL DATUM IS SITE SPECIFIC.
- FINAL CONDITIONS SHOWN ON THIS MAP ARE FROM INFORMATION GATHERED BY WENDEL ON JUNE 18, 2015.

#### LEGEND:

—X—X—	FENCE (TYPE NOTED)
—G—G—	GAS LINE
—640—	MAJOR CONTOUR LINE
—636—	MINOR CONTOUR LINE
—	LIMITS OF SURVEY
—R—	PROPERTY LINE/ LIMITS OF ENVIRONMENTAL EASEMENT
—ST—ST—	STORM LINE
~~~~~	WOODS LINE
CH.=CHAIN	INV.=INVERT
BIT.=BITUMINOUS	HDPE=HIGH DENSITY POLYETHYLENE
DS=DRAINAGE STRUCTURE	
ELEV.=ELEVATION	x 635.05 GROUND ELEVATION
FNC=FENCE	



PREPARED FOR  
HORIZON ENVIRONMENTAL

590A GALLERY ROAD  
CRANBERRY TOWNSHIP, PA  
16066

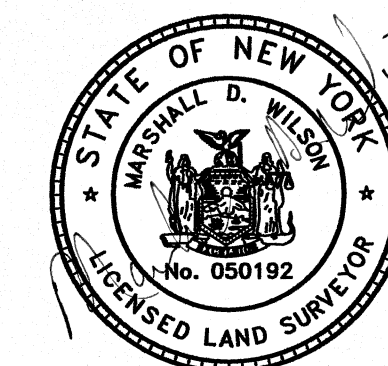
DEPARTMENT OF  
ENVIRONMENTAL CONSERVATION  
DIVISION OF ENVIRONMENTAL  
REMEDiation  
ALTECH SPECIALTY STEEL OU2A  
WILLOWBROOK POND CLOSURE  
SITE NO: 907022  
CONTRACT NO: D008535  
CITY OF DUNKIRK  
CHAUTAUQUA COUNTY,  
NEW YORK

RECORD DRAWINGS



Centerpointe Corporate Park  
375 Easley Road, Suite 200  
Williamsville, NY 14221  
www.wendel.com  
p716.688.0766 f716.625.8825

Wendel WD Architecture, Engineering, Surveying and  
Landscape Architecture P.C.



NOTE:  
THIS DOCUMENT AND THE IDEAS AND DESIGNS INCORPORATED HEREIN, AS AN INSTRUMENT OF PROFESSIONAL SERVICE, IS THE PROPERTY OF WENDEL WD ARCHITECTURE, ENGINEERING, SURVEYING AND LANDSCAPE ARCHITECTURE, P.C. AND IS NOT TO BE USED IN WHOLE OR IN PART, FOR ANY OTHER PROJECT WITHOUT THE WRITTEN AUTHORIZATION OF WENDEL. UNAUTHORIZED ALTERATION OR ADDITION TO ANY SURVEY DRAWING, DESIGN, SPECIFICATION, PLAN OR REPORT IS A VIOLATION OF SECTION 7208, PROVISION 2 OF THE NEW YORK STATE EDUCATION LAW.

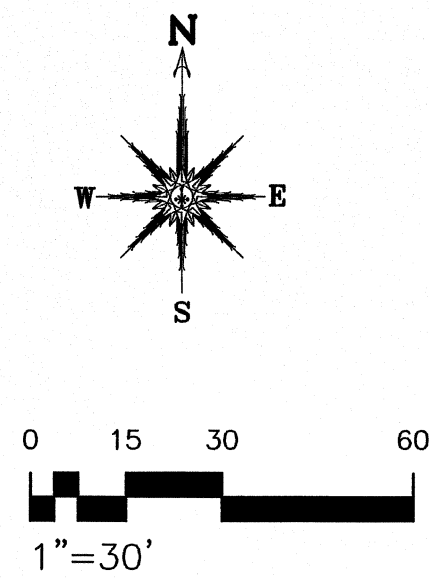
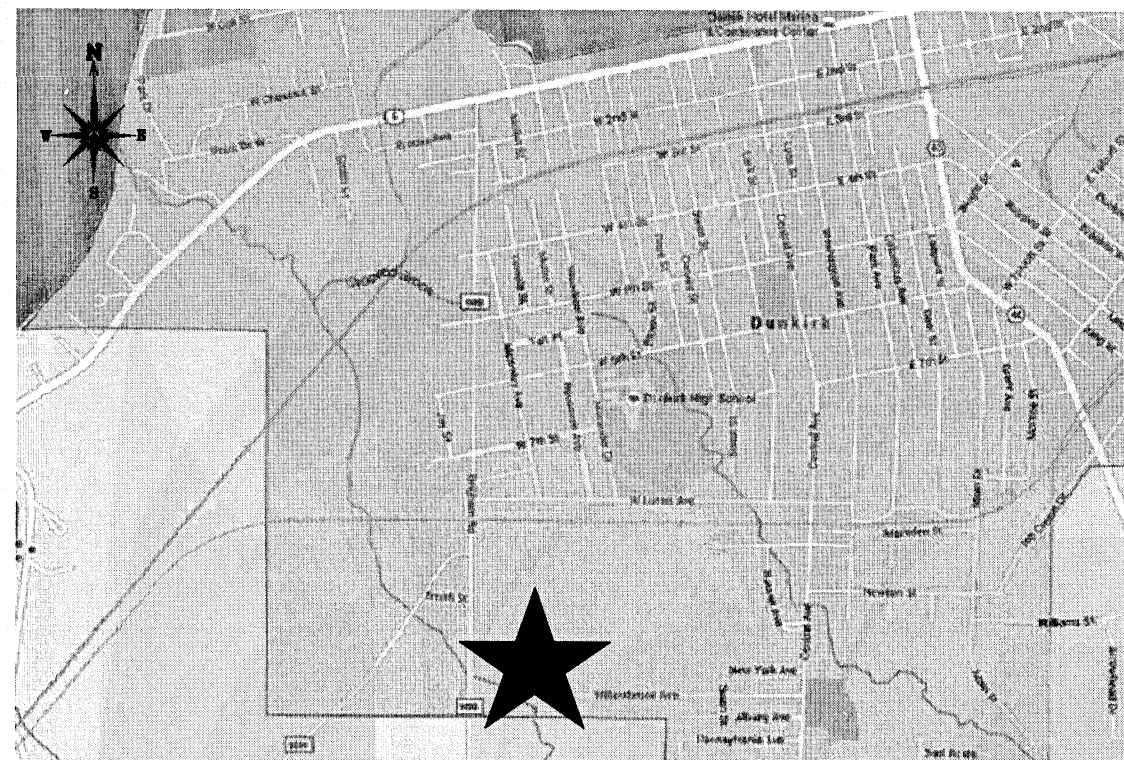
NO.	REVISIONS	DATE
BY		

DWG. TITLE

FINAL CONDITIONS MAP

DATE	6/23/2015		
SCALE	1"=30'		
DWN.	BSS	CHK.	RNJ
PROJ. No.	426906		
SHT. No.			





PREPARED FOR  
HORIZON ENVIRONMENTAL

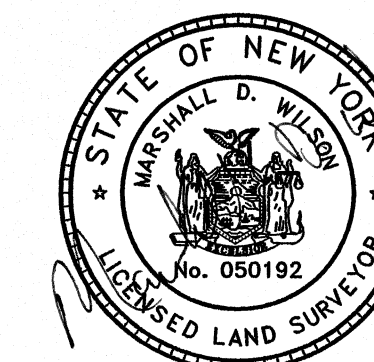
590A GALLERY ROAD  
CRANBERRY TOWNSHIP, PA  
16066

DEPARTMENT OF  
ENVIRONMENTAL CONSERVATION  
DIVISION OF ENVIRONMENTAL  
REMEDiation  
ALTECH SPECIALTY STEEL OU2A  
WILLOWBROOK POND CLOSURE  
SITE NO: 907022  
CONTRACT NO: D008535  
CITY OF DUNKIRK, NY  
CHAUTAUQUA COUNTY  
NEW YORK

RECORD DRAWINGS



Centerpointe Corporate Park  
375 Esplanade Road, Suite 300  
Williamsville, NY 14221  
www.wendelcompanies.com  
p:716.686.0786 f:716.625.6825  
Wendel WD Architecture, Engineering, Surveying and  
Landscape Architecture P.C.



NOTE:  
THIS DOCUMENT, AND THE IDEAS AND DESIGNS INCORPORATED HEREIN, AS  
AN INSTRUMENT OF PROFESSIONAL SERVICE, IS THE PROPERTY OF  
WENDEL WD ARCHITECTURE, ENGINEERING, SURVEYING AND LANDSCAPE  
ARCHITECTURE, P.C. AND IS NOT TO BE USED IN WHOLE OR IN PART, FOR  
ANY OTHER PROJECT WITHOUT THE WRITTEN AUTHORIZATION OF WENDEL  
UNAUTHORIZED ALTERATION OR ADDITION TO ANY SURVEY, DRAWING, DESIGN,  
SPECIFICATION, PLAN OR REPORT IS A VIOLATION OF SECTION 7205,  
PROVISION 2 OF THE NEW YORK STATE EDUCATION LAW.

GENERAL NOTES:

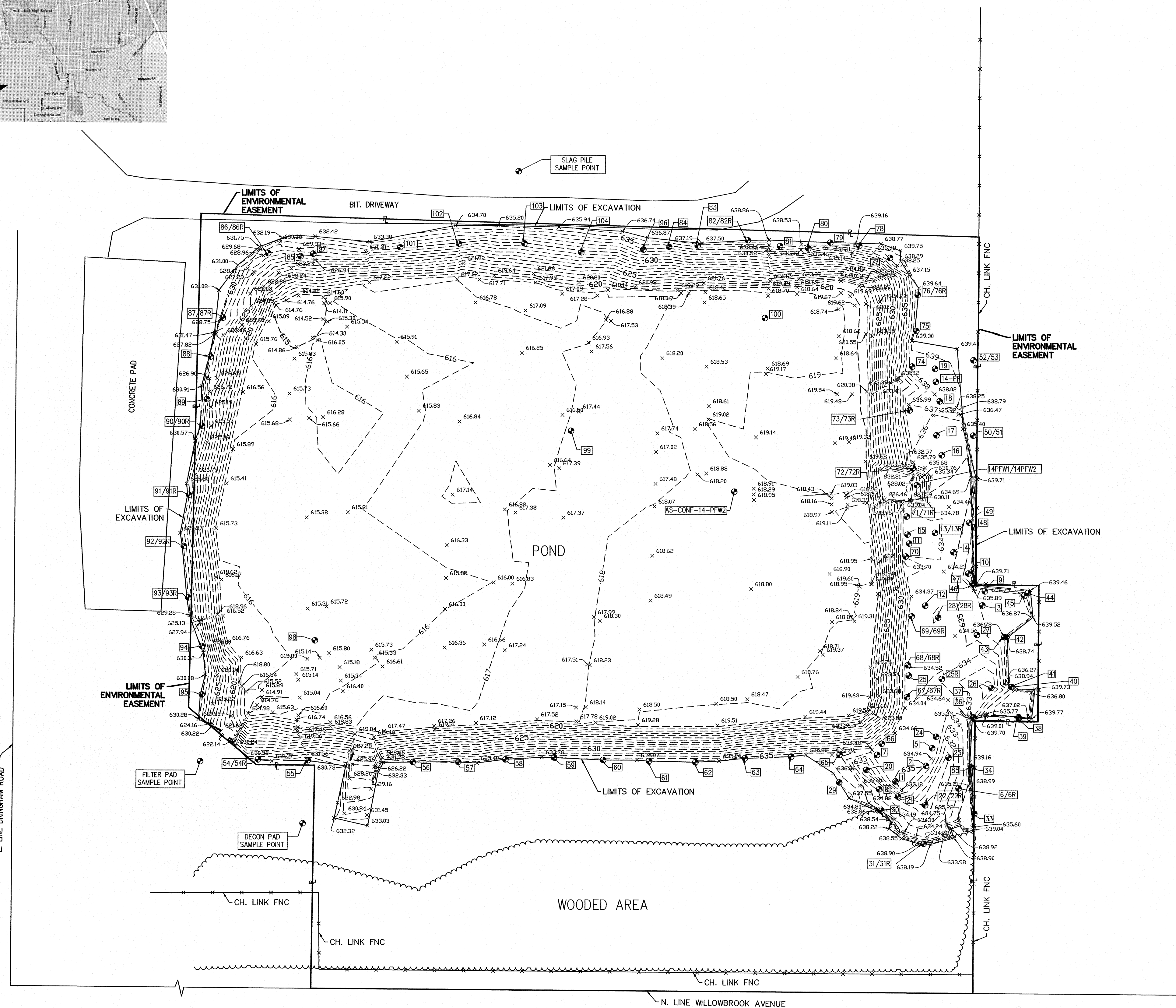
- HORIZONTAL DATUM IS REFERENCED TO THE NORTH AMERICAN DATUM OF 1983 (NAD83), NEW YORK STATE PLANE COORDINATE SYSTEM, WESTERN ZONE, AS PER PLANS BY SHAW, DRAWING NUMBER 134685-22D8, DATED APRIL 19, 2013.
- VERTICAL DATUM IS SITE SPECIFIC.
- BOTTOM OF EXCAVATION CONDITIONS SHOWN ON THIS MAP ARE FROM INFORMATION GATHERED BY WENDEL IN NOVEMBER 2014.

LEGEND:

- |                 |                                                 |
|-----------------|-------------------------------------------------|
| —X—X—           | FENCE (TYPE NOTED)                              |
| --- 640 ---     | MAJOR CONTOUR LINE                              |
| --- 636 ---     | MINOR CONTOUR LINE                              |
| —E—             | PROPERTY LINE/ LIMITS OF ENVIRONMENTAL EASEMENT |
| ---             | LIMITS OF EXCAVATION                            |
| BIT.=BITUMINOUS | N.=NORTH                                        |
| CH.=CHAIN       | S.=SOUTH                                        |
| E.=EAST         | W.=WEST                                         |
| ELEV.=ELEVATION | HOPE=HIGH DENSITY POLYETHYLENE                  |
| FNC=FENCE       | X 635.05 GROUND ELEVATION                       |
| INV.=INVERT     | 32 COMPOSITE SOIL SAMPLE                        |
|                 | 32R COMPOSITE SOIL RE-SAMPLE                    |

BRIGHAM ROAD (100.00')

E. LINE BRIGHAM ROAD



WILLOWBROOK AVENUE (50.0')

REVISIONS DATE

DWG. TITLE

BOTTOM OF EXCAVATION

DATE	6/23/2015
SCALE	1"=30'
DWN.	BSS
PROJ. No.	426906
SHT. No.	

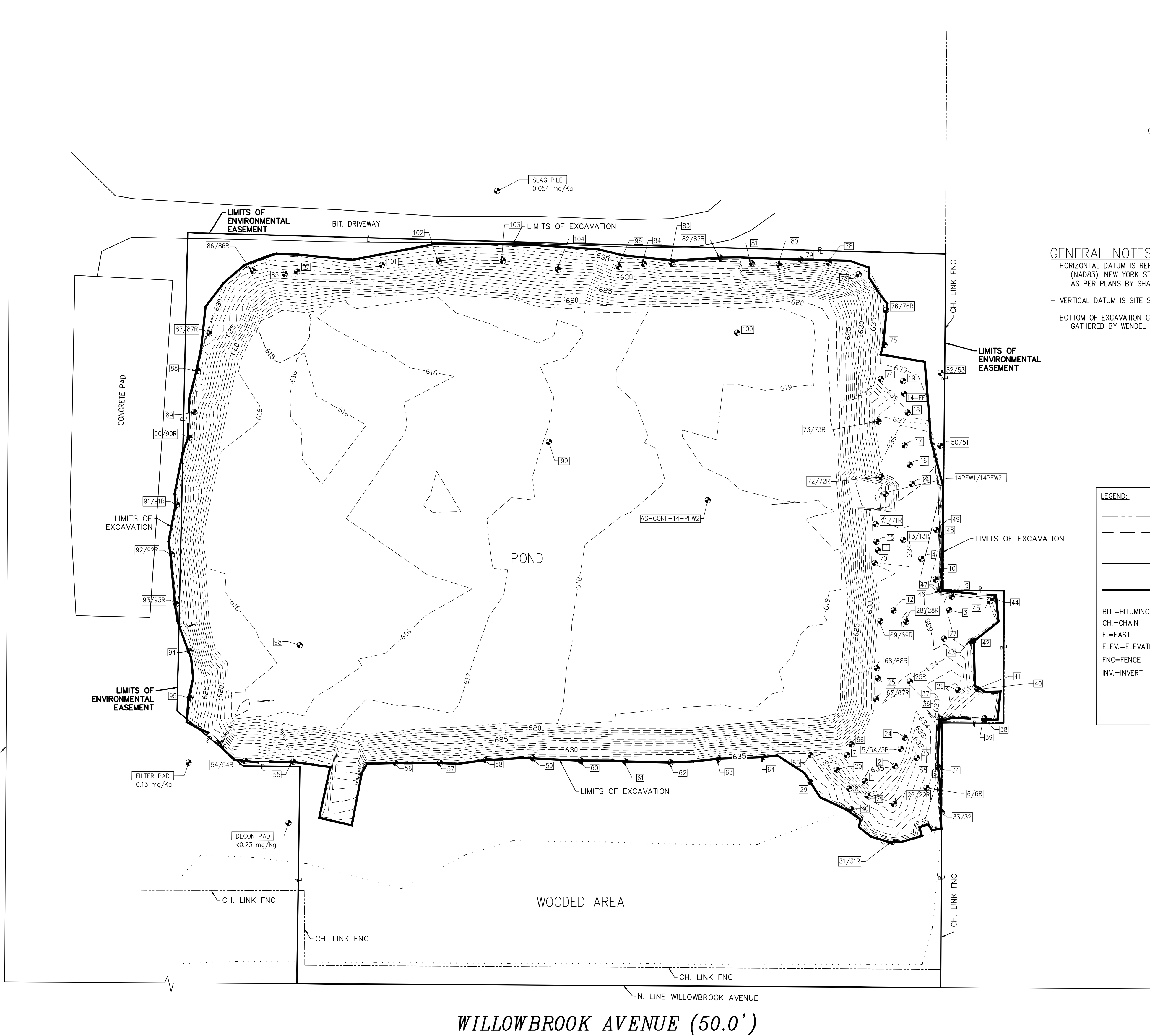




Abbreviated ID	PCB Results (mg/Kg)	Abbreviated ID	PCB Results (mg/Kg)	Abbreviated ID	PCB Results (mg/Kg)
1	44	43	0.4	90	3.2
2	5.9	44	2	90R	0.29
3	1.16	45	0.54	91	1.1
4	47	46	4.1	91R	<0.19
5	890	47	1.3	92	4.4
5A	1300	48	6.1	92R	<0.19
5A	1100*	49	0.68	93	4.8
5B	1000	50	80	93R	<0.21
5B	270*	51	110	94	0.87
6	57	52	1.4	95	0.45
6R	59	53	1.5	96	0.08
6R	26*	54	3.9	97	0.094
7	6.8	54R	<0.26	98	<0.26
8	14.4	55	0.1	99	<0.23
9	1.52	56	<0.27	100	<0.22
10	41	57	<0.21	101	<0.28
11	90	58	<0.26	102	<0.23
12	5.1	59	0.82	103	<0.28
13	0.4	60	<0.22	104	<0.27
13R	0.42	61	<0.26		
14	2.5	62	<0.21		
14R	0.15	63	<0.23		
14EF	1500	64	0.25		
14PF	0.18	65	0.51		
14PFW1	0.19	66	<0.26		
14PFW2	0.24	67	3.2		
15	7	67R	<0.19		
16	37	68	12		
17	3	68R	<0.23		
18	0.64	69	2.8		
19	3.2	69R	<0.21		
20	0.29	70	0.29		
21	0.53	71	5.2		
22	31	71R	<0.19		
22R	0.76	72	1.5		
23	0.16	72R	<0.24		
24	0.2	73	1.4		
25	1.6	73R	0.049		
25R	0.63	74	0.32		
26	0.91	75	0.21		
27	<0.25	76	2.7		
28	3.2	76R	<0.20		
28R	0.18	77	<0.26		
29	0.22	78	<0.22		
30	<0.24	79	<0.21		
31	2.9	80	<0.26		
31R	<0.22	81	<0.26		
32	37	82	<0.21		
33	1.2	82R	<0.23		
34	60	83	0.079		
35	4.1	84	0.24		
36	270	85	0.1		
37	0.52	86	1.8		
38	4.4	86R	<0.27		
39	37	87	2.8		
40	220	87R	<0.20		
41	9.2	88	0.96		
42	1.1	89	0.34		

NOTES:

- \* 5A, 5B, AND 6R INDICATES SAMPLES WERE ANALYZED BY ALS LABORATORIES.
- REFERENCE APPENDICES AND TABLES FOR FULL ANALYTICAL SUMMARY AND DATA PACKAGES.
- THE IDS SHOWN ARE ABBREVIATED, SEE THE APPENDICES AND TABLES FOR THE FULL NAME DESCRIPTION.
- ONLY PCB RESULTS ARE PROVIDED FOR CONFIRMATION AND PRE/POST CHARACTERIZATION SAMPLES. SEE SUMMARY TABLES AND APPENDICES FOR FULL ANALYTICAL DATA RESULTS.



GENERAL NOTES:

- HORIZONTAL DATUM IS REFERENCED TO THE NORTH AMERICAN DATUM OF 1983 (NAD83), NEW YORK STATE PLANE COORDINATE SYSTEM, WESTERN ZONE, AS PER PLANS BY SHAW, DRAWING NUMBER 134685-22D8, DATED APRIL 19, 2013.
- VERTICAL DATUM IS SITE SPECIFIC.
- BOTTOM OF EXCAVATION CONDITIONS SHOWN ON THIS MAP ARE FROM INFORMATION GATHERED BY WENDEL IN NOVEMBER 2014.

LEGEND:

- FENCE (TYPE NOTED)
- MAJOR CONTOUR LINE
- MINOR CONTOUR LINE
- PROPERTY LINE/ LIMITS OF ENVIRONMENTAL EASEMENT
- LIMITS OF EXCAVATION

- BIT.=BITUMINOUS
- CH.=CHAIN
- E.=EAST
- ELEV.=ELEVATION
- FNC=FENCE
- INV.=INVERT
- N.=NORTH
- S.=SOUTH
- W.=WEST
- HDPE=HIGH DENSITY POLYETHYLENE
- × 6.35.05 GROUND ELEVATION
- 32 COMPOSITE SOIL SAMPLE
- 32R COMPOSITE SOIL RE-SAMPLE

PREPARED FOR  
HORIZON ENVIRONMENTAL

590A GALLERY ROAD  
CRANBERRY TOWNSHIP, PA  
16066

DEPARTMENT OF  
ENVIRONMENTAL CONSERVATION  
DIVISION OF ENVIRONMENT/  
REMEDIAL  
ALTECH SPECIALTY STEEL OF  
WILLOWBROOK POND CLOSURE  
SITE NO.: 907022  
CONTRACT NO.: D00853E  
CITY OF DUNKIRK, NY  
CHAUTAUQUA COUNTY  
NEW YORK

Shaw E & I Engineering of New York



Centerpointe Corporate Park  
375 Essay Road, Suite 200  
Williamsville, NY 14221  
www.wendelcompanies.com  
p:716.688.0766 f:716.625.6825

Wendel WD Architecture, Engineering, Surveying and  
Landscape Architecture P.C.

NOTE:  
THIS DOCUMENT AND THE IDEAS AND DESIGNS INCORPORATED HEREIN, AS AN INSTRUMENT OF PROFESSIONAL SERVICE, IS THE PROPERTY OF WENDEL WD ARCHITECTURE, ENGINEERING, SURVEYING AND LANDSCAPE ARCHITECTURE, P.C. AND IS NOT TO BE USED IN WHOLE OR IN PART, FOR ANY OTHER PROJECT WITHOUT THE WRITTEN AUTHORIZATION OF WENDEL WD ARCHITECTURE, ENGINEERING, SURVEYING AND LANDSCAPE ARCHITECTURE, P.C. UNAUTHORIZED ALTERATION OR ADDITION TO ANY SURVEY, DRAWING, DESIGN SPECIFICATION, PLAN OR REPORT IS A VIOLATION OF SECTION 7209, PROVISION 2 OF THE NEW YORK STATE EDUCATION LAW.

REVISIONS DATE

DWG. TITLE

FIGURE 3  
POST EXCAVATION  
SURVEY LOCATIONS

DATE 9/30/2015

SCALE 1"=30'

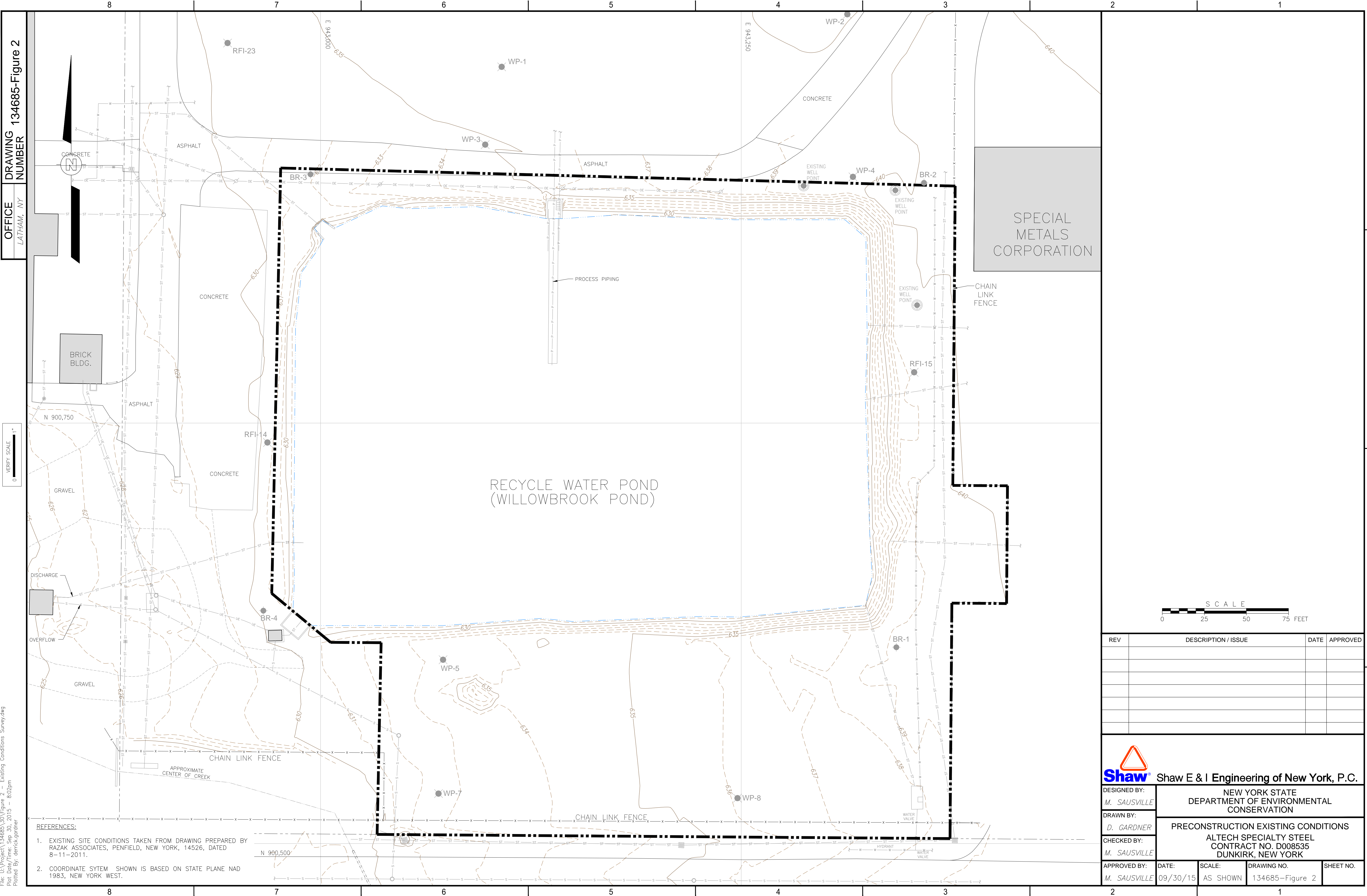
DWN. BSS CHK. RNJ

PROJ. No. 426906

SHT. No.

FIGURE 3





File: U:\Project\134685\30\Figure 2 - Existing Conditions Survey.dwg  
Plot Date: Sep 30, 2015 8:02pm  
Plotted by: denickagone