

PSC Records Review: Village of Westfield

According to Sanborn fire maps dating back to the late 1800s, a small gas plant was located on Union Street in the Village of Westfield. Public service records acknowledge an electric plant called Municipal Electric Light but have no records of a gas plant. After looking into the Municipal Electric Light company, it appears that they did not manufacture any gas products. They did however buy large quantities of coal that was used as fuel for a steam boiler that was used to produce electricity to the surrounding cities. The company was very successful and quickly grew adding more customers and more power lines every year until the end of the records in 1932. The amount of coal burned each year to produce electricity is listed in the table below.

However, a note of interest is that it mentions the Republic Heat and Fuel Company as its only competition. Although it appears that Republic was eventually a non-threat to the Municipal Electric, it was listed as competition in respects to gas without Municipal ever having records of producing gas. The company was mostly concerned with the dealings of Republic until 1920 but after that year it seemed that the strength of Municipal overtook that of Republic and the competition in the following years is listed as “practically none”.

Table 1:

Year	Electricity Produced from Coal (kWhr)	Year	Electricity Produced from Coal
1914	235,628	1919	378,027
1915	231,717	1920	529,825
1916	291,241	1921	508,765
1917	310,322	1922	587,531
1918	342,369	1923	574,355

Table 1 Cont'd:

Year	Electricity Produced from Coal (kWhr)	Year	Electricity Produced from Coal (kWhr)
1924	105,260	1929	2984
1925	3,716	1930	180
1926		1931	2,144
1927		1932	
1928	2,240	1933	

Westfield MGP Site Border



Legend
Tax Parcel-Chautauqua





Clinton St

Academy St

Market St

E Main St

Brewer Pl

Union St

Westfield MGP Site

Moore Park

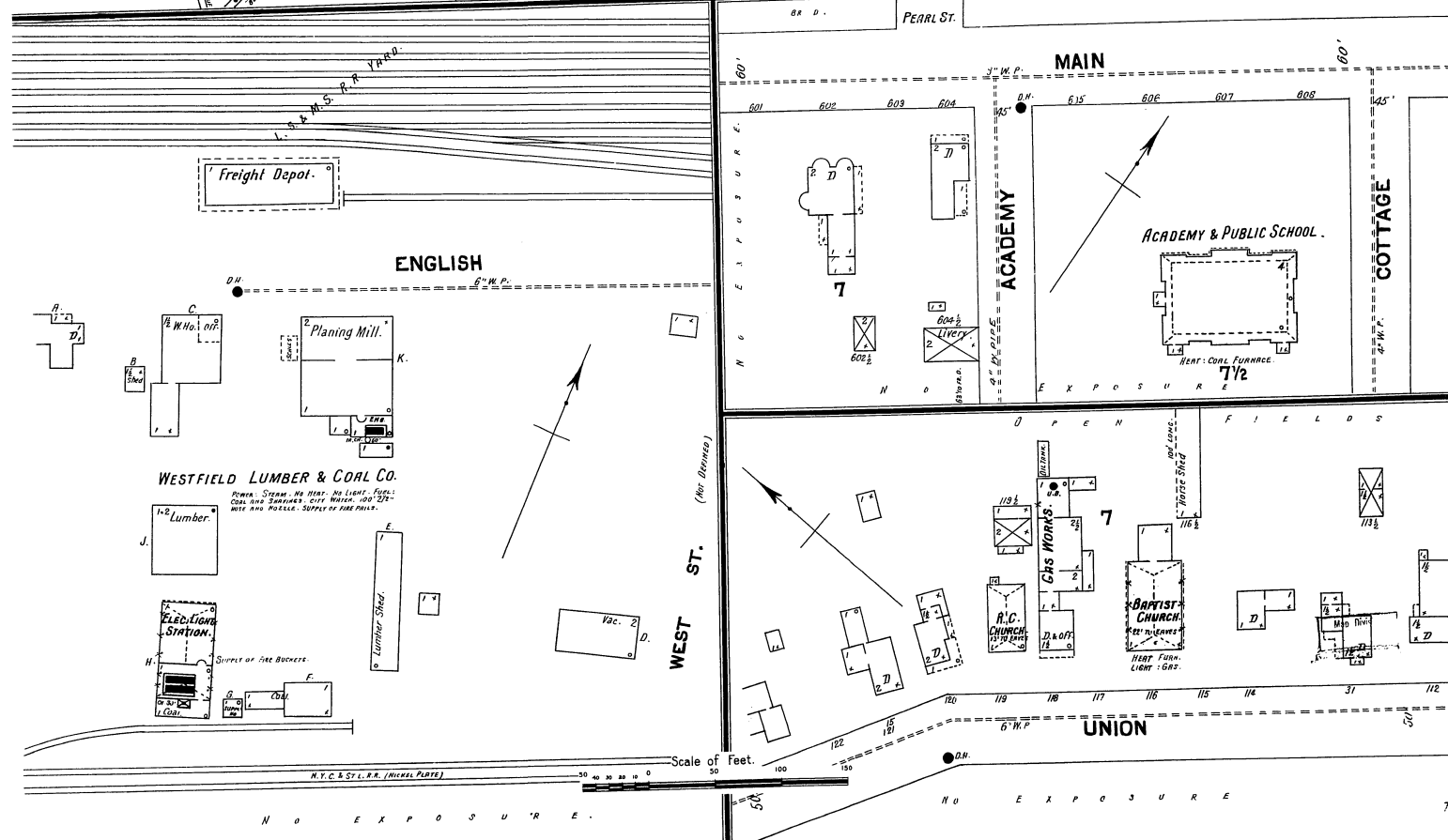
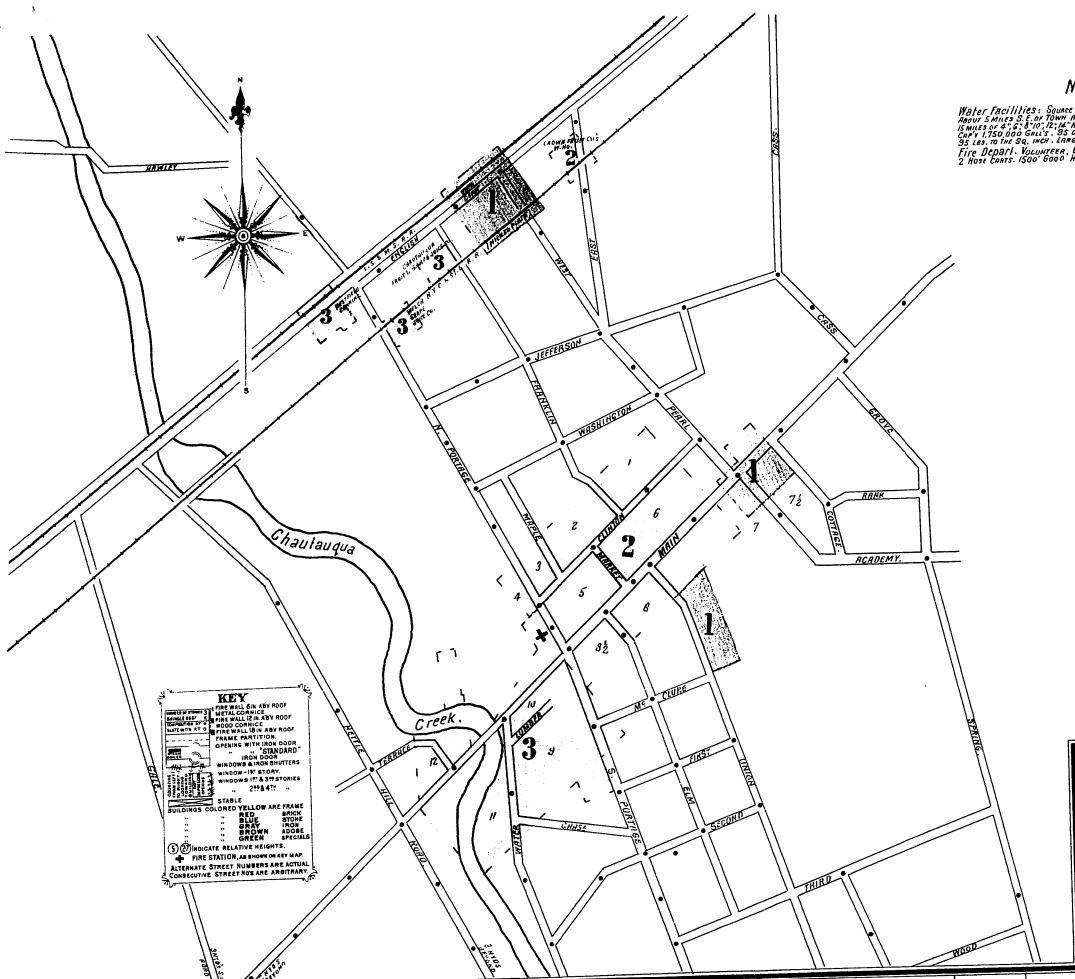
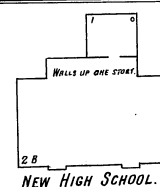
Em St

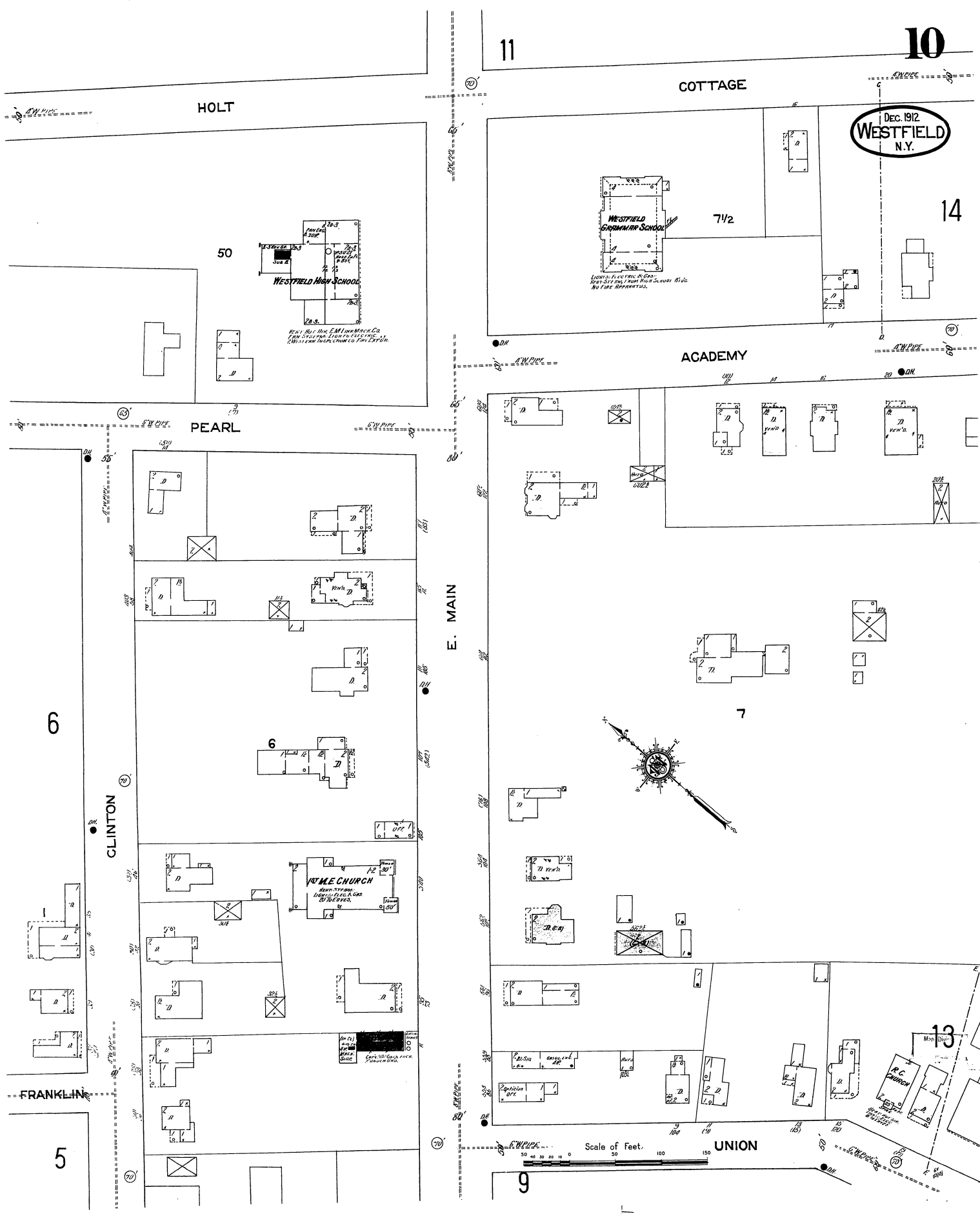
Kent St



Water Facilities: Source of Supply: Flowing Springs. About 5 Miles S. E. of Town and About 250' Aft. Town. 15 Miles of 4" 6" 8" 10" 12" 14" and 16" mains. Reservoir, Cap'y 1,750,000 Gall's. 95 OSL. HPS. Ave. Pressure: 95 lbs. to the Sq. Inch. Large Surplus Supply.

Fire Dept.: Volunteer, 60 Men. One Hand Engine. 2 Hose Carts. 1500' 6000 Hose. Alarm by Bell.

SPECIALS.[illegible]



DEC. 1912
WESTFIELD
N.Y.

WESTFIELD
GRAMMAR SCHOOL

LIGHTS, ELECTRIC, & GAS
WATER SUPPLY HAS 1 INCH WATER CLOSET WASTE
NO TUBS, NO BATHS, ETC.

WESTFIELD
HIGH SCHOOL

WEST BAY BROS. EAT LUNCH CO.
FRANKLIN ST. 121-123
E. MAIN ST. 121-123

WESTFIELD
CHURCH

LIGHTS, ELECTRIC, & GAS
WATER SUPPLY HAS 1 INCH WATER CLOSET WASTE
NO TUBS, NO BATHS, ETC.

R.C. CHURCH

Scale of Feet.

UNION

OCT. 1923
WESTFIELD
N.Y.

CLINTON

E. MAIN

PEARL

ACADEMY

UNION

KENT

Scale of Feet.

Copyright 1924 by the Sanborn Map Co

14

2

55
(7)

42
(6)

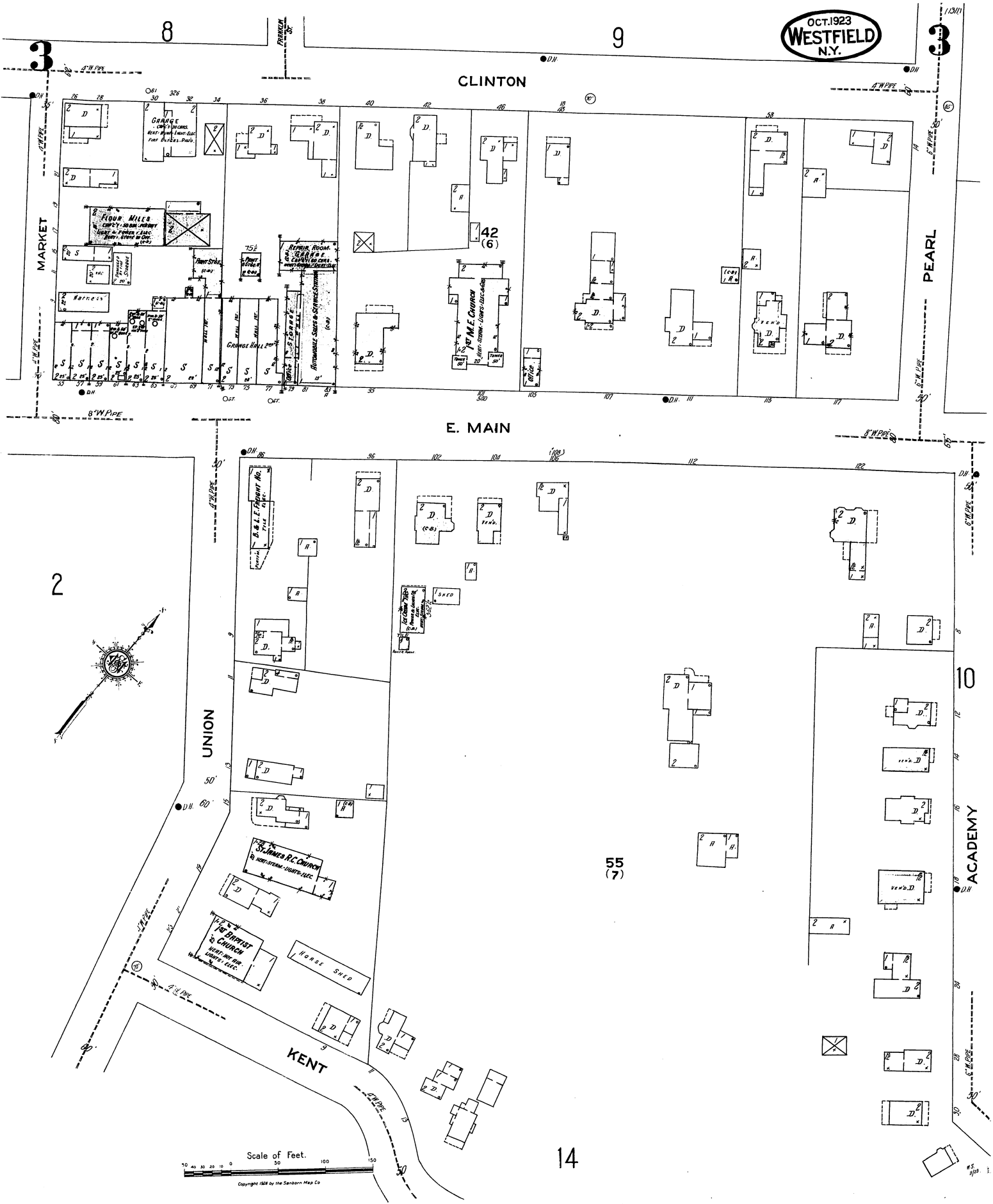
10

3

8

9

3



OCT. 1923
WESTFIELD
N.Y.

CLINTON

E. MAIN

PEARL

ACADEMY

KENT

Scale of Feet.

Copyright 1924 by the Sanborn Map Co.

14