

Pratt and Lambert CA Site

DER Site Management, 04/04/2012

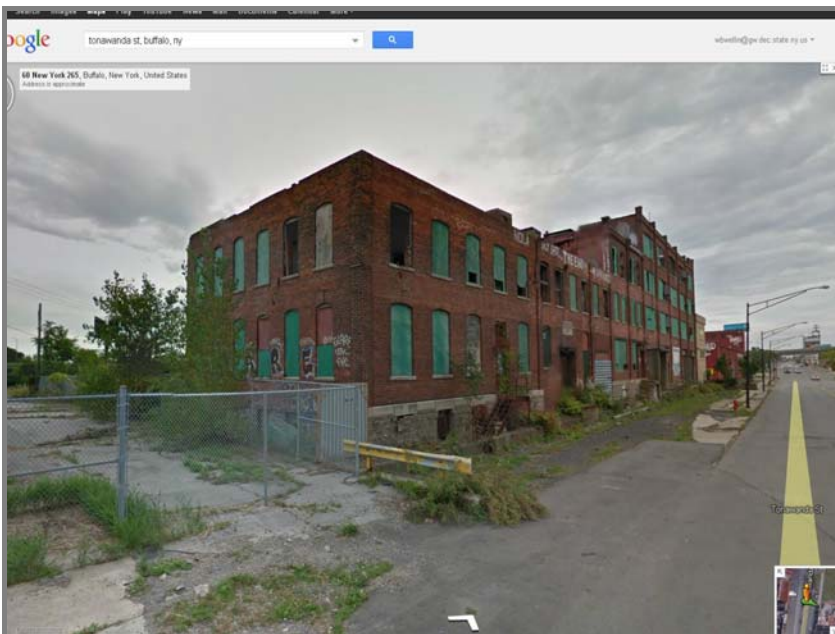
Photos with Notes

Photo

Description



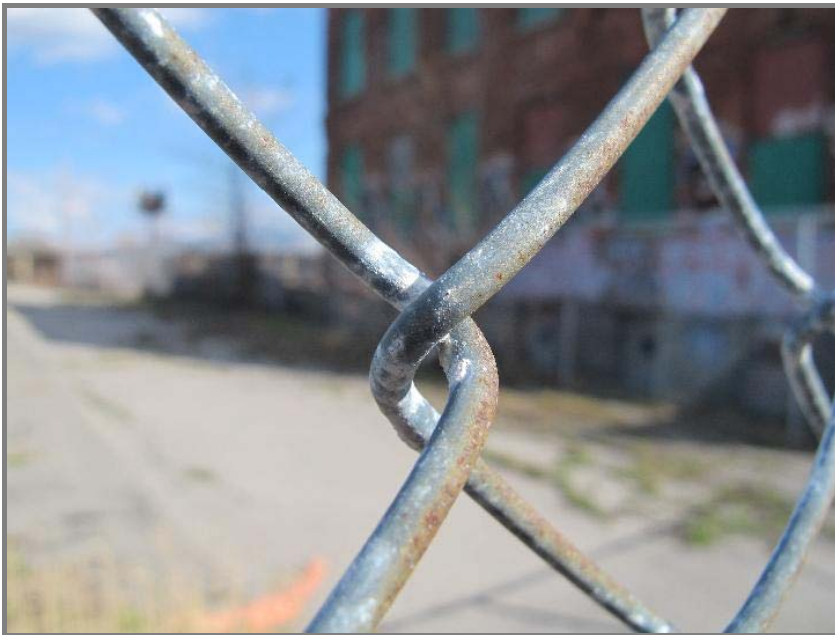
Recon trip Buffalo to assess site contition. Carl Hoffman and Will Welling visited the former Pratt and Lambert site to visually assess the site contition. We parked on Tonawanda Street. The site is fenced along Tonawanda street and across the northern property line. This was the path we walked and we looked towards the property interior.



Google Streetview, starting point of our walk. View looking south towards Chemcore site about a half-mile away.



Upon arrival we took this photo looking east. Camera was aimed above or looking through the fence fabric. We stayed outside of the fence.



Fabric



Panning more to the left which is to the north.



Carl and I walked along the Tonawanda Street sidewalk perimeter. Direction is looking north.



Holding the camera over the fence



Panorama shot, panning left towards the north



Panorama shot, panning left towards the north



Panorama shot, panning left towards the north



Panorama shot, panning left towards the north



Looking back from the fence corner.



Telephoto shot, camera held above head



We continued walking around the fenced perimeter. We turned the corner to the right, heading east. We could see rolls inside the fence.



Camera held above the head,
looking inside towards the
south



Camera held above the head,
looking inside towards the
south



Camera held above the head, looking inside towards the south



Panorama swinging south to east, over the top of the fence on the northern boundary.



Panorama swinging south to east, over the top of the fence on the northern boundary.



Panorama swinging south to east, over the top of the fence on the northern boundary.



Panorama swinging south to east, over the top of the fence on the northern boundary.



Near the distant fence corner. We entered briefly and then walked back the way we came.



Near the distant fence corner.
We entered briefly and then
walked back the way we came.



Near the distant fence corner.
We entered briefly and then
walked back the way we came.



Near the distant fence corner.
We entered briefly and then
walked back the way we came.



Corner shot.



Telephoto looking at the industrial building loading entrance across the street (66 Tonawanda Street).



Google Maps Streetview, 66 Tonawanda Street.



Photo of the interior from the sidewalk along Tonawanda Street. Camera held above head.



Photo of the interior from the sidewalk along Tonawanda Street. Camera held above head.