

# QUARTERLY DATA SUMMARY REPORT

---

## NIAGARA COUNTY REFUSE DISTRICT SITE

---

Wheatfield, Niagara County, New York

(NYSDEC Site No. 9-32-026)

---

SUBMITTED TO:



UNITED STATES  
ENVIRONMENTAL PROTECTION  
AGENCY



NEW YORK STATE  
DEPARTMENT OF  
ENVIRONMENTAL CONSERVATION

SUBMITTED FOR:

**NIAGARA COUNTY REFUSE DISTRICT  
AND PRP GROUP**

PREPARED BY:

**PARSONS**

40 La Riviere Drive, Suite 350  
Buffalo, New York 14202  
(716) 541-0730 Fax (716) 541-0760

**November 2007**

## **QUARTERLY DATA SUMMARY REPORT**

---

---

**NIAGARA COUNTY REFUSE DISTRICT SITE**  
**Wheatfield, Niagara County, New York**  
**(NYSDEC Site No. 9-32-026)**

---

---

*Prepared For:*

**NIAGARA COUNTY REFUSE DISTRICT  
AND PRP GROUP**

*Prepared By:*

**PARSONS**  
40 La Riviere Drive, Suite 350  
Buffalo, New York 14202  
(716) 541-0730 Fax (716) 541-0760

**November 2007**

## TABLE OF CONTENTS

### Page No.

#### **SECTION 1 INTRODUCTION..... 1-1**

- 1.1 Procedures ..... 1-1
  - 1.1.1 Effluent Sampling..... 1-1
  - 1.1.2 Groundwater Sampling..... 1-1
  - 1.1.3 Water Level Measurements..... 1-1
  - 1.1.4 Site Inspections..... 1-2

#### **SECTION 2 RESULTS ..... 2-1**

- 2.1 Effluent Samples ..... 2-1
- 2.2 Groundwater Analytical Results ..... 2-1
- 2.3 Water Levels..... 2-1
- 2.4 Site Inspections..... 2-2
- 2.5 Maintenance ..... 2-2
- 2.6 OM&M Oversight ..... 2-3

#### **SECTION 3 CONCLUSIONS ..... 3-1**

#### **SECTION 4 REFERENCES..... 4-1**

#### **APPENDIX A CITY OF NORTH TONAWANDA INDUSTRIAL WASTEWATER DISCHARGE PERMIT**

#### **APPENDIX B CORRESPONDENCE**

#### **APPENDIX C WATER LEVEL RECORDS**

#### **APPENDIX D MONTHLY INSPECTION LOGS**

#### **APPENDIX E MAINTENANCE RECORD LOGS**

#### **APPENDIX F COMPACT DISK CONTAINING REPORT**

## TABLE OF CONTENTS

Page No.

### LIST OF TABLES

Table 2.1 Quarterly Site Inspection Results Summary .....	2-4
---	-----

### LIST OF FIGURES

Figure 1.1 Site Plan.....	1-2
---------------------------	-----

# **SECTION 1**

## **INTRODUCTION**

The Niagara County Refuse Site Potentially Responsible Parties (PRP) Group completed a remedial action at the Niagara County Refuse Site (Site), Wheatfield, New York in 2000. The remedial action was conducted in accordance with the United States Environmental Protection Agency (USEPA) Record of Decision (USEPA, 1993) and the United States District Court Consent Decree (USEPA, 1995). The PRP Group is currently conducting operations, maintenance, and monitoring (OM&M) in accordance with the USEPA-approved OM&M Manual (CRA, 2000). This data report summarizes monitoring activities from July through September 2007.

### **1.1 PROCEDURES**

#### **1.1.1 Effluent Sampling**

A revised Industrial Wastewater Discharge Permit (Appendix A) was issued by the City of North Tonawanda, and is effective from February 28, 2007 through April 1, 2010. The revised permit has a reduced analytical parameter list compared to the original permit, and a semi-annual sampling frequency. Prior to the revised permit, samples were collected monthly. In 2007, an effluent sample was collected in January, February, and September from Wet Well A, which receives water from the leachate collection system surrounding the landfill. Composite 24-hour samples were collected from Wet Well A using an automated sampler. The next effluent sample is scheduled to be collected in March 2008.

#### **1.1.2 Groundwater Sampling**

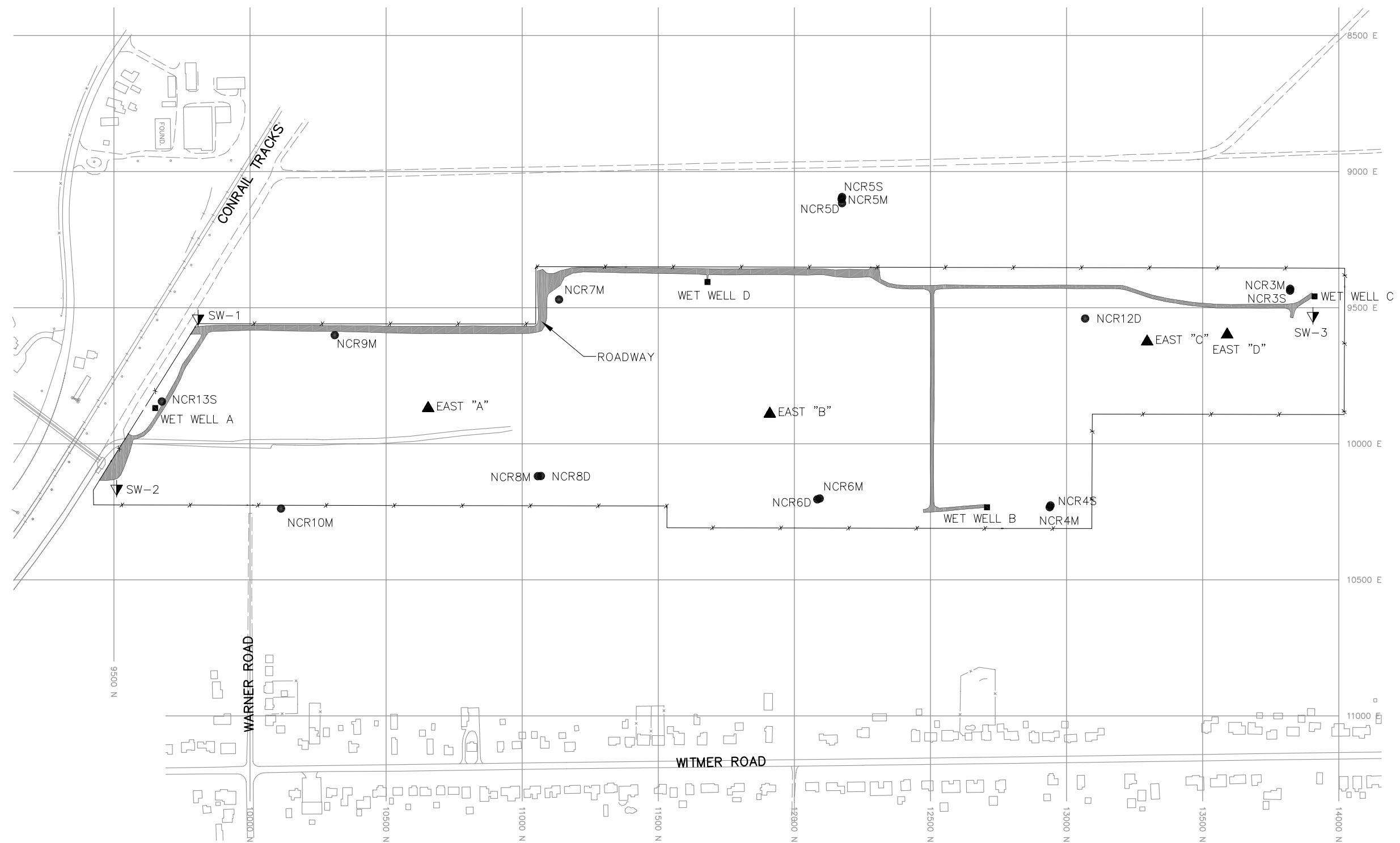
Groundwater samples were not collected during this reporting period. In accordance with the approved OM&M Plan (CRA, 2000), the groundwater sampling frequency was decreased from a quarterly to a semi-annual basis in 2003, and from a semi-annual to an annual basis beginning in 2006. Annual groundwater sample collection will continue for an undetermined time period. The next round of groundwater samples is scheduled to be collected in November 2007.

#### **1.1.3 Water Level Measurements**

Water levels were measured during monthly Site inspections in July, August, and September 2007. Water levels were measured from four observation well locations (piezometers East A, East B, East C, and East D), four effluent monitoring locations (wet wells A, B, C, and D), and four monitoring well locations (NCR-3S, NCR-4S, NCR-5S, and NCR-13S). The water levels were measured with an electronic water level indicator, and reported as an elevation above mean sea level. Figure 1.1 shows the locations of the water level monitoring points.

#### **1.1.4 Site Inspections**

Monthly Site inspections were conducted on July 2, August 2, and September 8, 2007. During the Site inspections, the manholes, wet wells, landfill cap, wetlands, perimeter fence, drainage ditches, swale outlets, culverts, gas vents, and monitoring wells were each visually inspected.



## LEGEND

- |              |   |
|--------------|---|
| ▲ EAST "A"   | WATER LEVEL MONITORING WELL LOCATION    |
| ▼ SW-2       | SURFACE WATER MONITORING LOCATION       |
| ■ WET WELL A | EFFLUENT MONITORING LOCATION            |
| ● NCR13S     | GROUNDWATER QUALITY MONITORING LOCATION |



SCALE: 1"=400'

FIGURE 1.1

NIAGARA COUNTY REFUSE SITE  
WHEATFIELD, NEW YORK  
SITE PLAN

**PARSONS**

180 LAWRENCE BELL DRIVE, SUITE 104, WILLIAMSVILLE, N.Y. 14221, PHONE: 716-633-7074

## **SECTION 2**

### **RESULTS**

This section describes the results of OM&M activities conducted from July through September 2007. Activities during this quarter included effluent sampling, water level measurements, maintenance work, and Site inspections.

#### **2.1 EFFLUENT SAMPLES**

One effluent sample was collected during the reporting period (September 6, 2007). The effluent sample was collected by O&M Enterprises, and analyzed by the City of North Tonawanda. The analytical results from effluent samples are used by the City to confirm that the effluent received from the Site meet the criteria for acceptance by the City treatment system. These data are not presented in the quarterly monitoring reports, but will be summarized in the 2007 annual monitoring report. The revised City of North Tonawanda Industrial Wastewater Discharge Permit (February 31, 2007 through April 1, 2010) has been included in Appendix A. As can be seen in the revised permit, the analytical parameters and the sampling frequency have been reduced from the original permit.

#### **2.2 GROUNDWATER ANALYTICAL RESULTS**

Monitoring wells NCR-3S, NCR-4S, NCR-5S, and NCR-13S were not sampled during this reporting quarter, due to the current annual groundwater sampling schedule specified in the OM&M Manual. Groundwater sample collection is planned for November 2007, assuming groundwater levels are adequate for collection of samples. The locations of the monitoring wells are provided in Figure 1.1. The USEPA, NYSDOH, and NYSDEC have agreed to reduce the number of analytical parameters monitored in the groundwater samples (see Appendix B).

#### **2.3 WATER LEVELS**

Results of water level measurements collected during this reporting period are presented in Appendix C. Water levels were collected from the monitoring locations on a monthly basis. Water levels in the monitoring wells generally decreased over the reporting quarter. Monitoring wells NCR-3S and NCR-4S contained no measurable water throughout the reporting period. NCR-5S contained no measurable water in August and September. NCR-13S contained no measurable water in September. Due to a drier and warmer than normal summer, wells without measurable water were more common during this reporting period than in previous years between July and September.



## **2.4 SITE INSPECTIONS**

A summary of the Site inspection findings is included in Table 2.1. Copies of the Site Inspection Logs have been included in Appendix D.

Each of the inspections found the manholes and wet wells to be in good condition. Water levels were measured in the wet wells during the inspections.

Examination of the landfill cap vegetative cover included checking for erosion, bare areas, washouts, leachate seeps, height of vegetation, and assessing the condition of the vegetation. No surface erosion, bare spots, or leachate seeps were noted. The grass covering the landfill was relatively short during the reporting period due to drier than normal summer conditions. The cover was mowed shortly after the September inspection.

Additionally, during the examination of the landfill cap, the access roads were examined for erosion, potholes/puddles, and obstructions. All aspects of the access roads that were examined were deemed acceptable.

The wetlands were visually examined to assess the condition of the vegetation, change in water levels, and to observe general conditions. Wetland vegetation was noted to be in good condition during the Site inspections. A lower than normal water level was noted in the wetland area during the reporting period due to the drier than normal summer.

All other parts of the landfill system which were examined, including the drainage ditches, swale outlets, culverts, and gas vents, were found to be in acceptable condition during the reporting period.

## **2.5 MAINTENANCE**

Scheduled maintenance during the reporting period included repairs to sticking float switches in Wet Well A, and mowing the landfill cover. Copies of the Maintenance Record Logs have been included in Appendix E. On July 20, the wet well switches in Wet Well A were removed, new wet well switches were installed, and the levels adjusted. On July 20, the vegetative cover was mowed along the perimeter fence line. Between September 12 and September 17 the landfill cover was mowed.

Occasional unscheduled maintenance at the landfill is required. On July 26, damage due to vandalism was identified at a gate on the north side of the landfill, and was promptly repaired. Although the hinge pins to the gate had been removed, it appeared that access to the site had not been gained. The hinge pins were reinstalled. On August 3, the hinge pins that were removed on July 26 were modified with a locking chain to increase site security. No major repairs were required.

## **2.6 OM&M OVERSIGHT**

Parsons' Quality Assurance (QA) work included periodic oversight of OM&M activities by O&M Enterprises, Inc., review of monthly inspection and monitoring data, and periodic communications with O&M Enterprises. Upon completion of work performed by O&M Enterprises, routine activity report forms were completed. Parsons reviewed the report forms for completeness, and recorded problems, if any, on the forms (Appendices C, D, and E).

**Table 2.1**  
**Quarterly Site Inspection Results Summary**

<b>Inspection Item</b>	<b>Acceptable</b>	<b>Requires Action</b>	<b>Comments</b>
Manholes	X		
Wet Wells	X		Water levels were measured monthly.
Wetlands	X		Water level was noted to be lower than normal during the reporting period due to a lack of precipitation.
Perimeter Fence	X		Hinge pins were removed on a gate and were repaired.
Condition of Roads	X		No potholes were observed.
Integrity of the Cap	X		No erosion was observed.
Drainage Ditches/Swales	X		
Gas Venting System	X		
Wells	X		Water levels were measured monthly.
Culverts	X		
Other	X		

## **SECTION 3**

### **CONCLUSIONS**

The following conclusions were developed based on the data collected during this reporting period:

- The landfill was inspected monthly and is appropriately maintained.
- As specified in the OM&M Manual, annual groundwater monitoring commenced in 2006. Groundwater samples are currently scheduled to be collected in November 2007, assuming adequate groundwater is available in the wells.
- Water levels were measured in the wet wells, monitoring wells, and the observation wells on the landfill on a monthly basis. Water levels in the monitoring wells generally decreased over the reporting quarter, with all of the wells having no measurable water during the September site inspection. Two of the four wells contained no measurable water in July, and three wells were dry in August. Wells without measurable water were identified more frequently than in recent previous years, due to a drier than normal summer.
- Wetlands vegetation appeared healthy, and in good condition, despite lower than normal water levels, based on monthly visual assessments.

## **SECTION 4**

### **REFERENCES**

Record of Decision, Niagara County Refuse Site, Wheatfield, Niagara County, New York; United States Environmental Protection Agency, September 1993.

Consent Decree, Docket 946-849; United States Environmental Protection Agency, February 3, 1995.

Operations, Maintenance and Monitoring Manual for Niagara County Refuse District Site Remedial Construction, Wheatfield, Niagara County, New York; Conestoga-Rovers & Associates, December 2000.

**APPENDIX A**

**CITY OF NORTH TONAWANDA INDUSTRIAL WASTEWATER  
DISCHARGE PERMIT**

**CITY OF NORTH TONAWANDA**  
4/5/95  
**INDUSTRIAL WASTEWATER DISCHARGE PERMIT**

---

**Permit Number: 2628010**

In accordance with the provisions of the Clean Water Act as amended, all terms and conditions set forth in this permit, the City of North Tonawanda Local Sewer Use Ordinance and any applicable Federal, State or local laws or regulations, authorization is hereby granted to: Niagara County Department of Public Works

Engineering Department

59 Park Avenue

Lockport, New York 14094

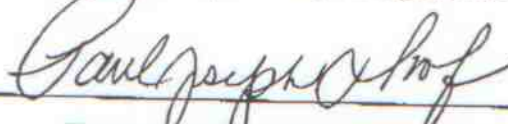
Classified by S.I.C. Number(s): N/A

for the discharge of: groundwater and other wastes generated during Remedial Action construction and implementation into the City of North Tonawanda Sewerage System.

This permit is granted in accordance with an application filed in the offices of the Treatment Plant Superintendent located at 830 River Road, and in conformity with specifications and other required data submitted in support of the above named application, all of which are filed with and considered part of this permit. This permit is also granted in accordance with discharge limitations and requirements, monitoring and reporting requirements, and all other conditions set forth in Parts I and II hereof.

**Effective this 31st day of February, 2007**

**To expire the 1st day of April, 2010**



**Treatment Plant Superintendent**

**Signed this 31st day of January, 2007**

PERMIT NUMBER: 2628010

Part I  
Page of 4**PART I. SPECIFIC CONDITIONS****A. DISCHARGE LIMITATIONS AND MONITORING REQUIREMENTS**

During the period beginning the effective date of this permit and lasting until the expiration date, discharge from the permitted facility outfall(s) shall be limited and monitored by the permittee as specified below (Refer to attached map for sampling and monitoring sites).

Sample Point	Parameter	Discharge Limitations mg/l except pH Daily Max.	Sampling Period	Sampling Type
001	Total Flow		1 Sampling Day Monthly	continuous.
2/	Aluminum	2.0	1 Sample Day semi-annual	24 hr comp.
	Lead	4.6	1 Sampling Day semi-annual	24 hr comp.
	Iron	10	1 Sampling Day semi-annual	24 hr comp.
2/	Magnesium	Monitor Only	1 Sampling Day semi-annual	24 hr comp.
2/	Sodium	Monitor Only	1 Sampling Day semi-annual	24 hr comp.
	pH	Monitor Only	1 Sampling Day semi-annual	grab
2/	BOD	Monitor Only	1 Sampling Day semi-annual	24 hr comp.
2/	Total Suspended Solids	Monitor Only	1 Sampling Day semi-annual	24 hr comp.



Part I  
Page 1 of 4

## B. DISCHARGE REPORTING REQUIREMENTS

[illegible]

**PERMIT NUMBER: 2628010****Part I**  
**Page 4 of 4****PART I. SPECIFIC CONDITIONS****C. SPECIAL REQUIREMENTS**

- 1) This permit is written for a duration of three years. Upon renewal of this permit, all parameters will be re-evaluated to develop a parameter list based on chemical concentrations present in the extracted groundwater.
- 2) Frequency of monitoring is to be re-evaluated yearly..
- 3) All monitoring reports (initial and subsequent), are to be received by the Superintendent, no later than thirty (30) days after receipt of validated data.
- 4) It is required that the Permittee have a Site Operations Manual available at all times. All emergency phone numbers must be listed in an appropriate place for easy access by operations personnel. The permittee shall not discharge to the City of North Tonawanda sewerage treatment works during overflow conditions. The permittee is required to cease all pumping operations upon verbal request of the North Tonawanda Wastewater Treatment Plant Superintendent or his assigns. Pumping operations shall not recommence until approved by the North Tonawanda Wastewater Treatment Plant Superintendent or his assigns.
- 5) Analysts are required to use GC/MS method detection limits for most organics (if GC/MS is appropriate); GC/ECD for PCBS/Pesticides and GF method detection limits for metals (where GF is appropriate), as contained in attachment 5 of the NYSDEC TOGs 1.3.8 - New Discharges to Publicly Owned Treatment Works - dated 10/26/94.

# **APPENDIX B**

## **CORRESPONDENCE**



UNITED STATES ENVIRONMENTAL PROTECTION AGENCY  
REGION 2  
290 BROADWAY  
NEW YORK, NY 10007-1866

NOV 21 2005

**BY FEDEX**

Mr. Eric Felter  
Project Manager  
Parsons  
180 Lawrence Bell Drive, Suite 104  
Williamsville, New York 14221

Re: Niagara County Refuse Site, Wheatfield, New York: Request for the Reduction of Analytical Parameters in Groundwater Samples

Dear Mr. Felter:

The U.S. Environmental Protection Agency (EPA) and New York State Department of Environmental Conservation (NYSDEC) have reviewed your letter dated October 3, 2005 prepared by Parsons on behalf of the Niagara County Refuse (NCR) Site PRP Group requesting a reduction in the analytical parameters in groundwater samples taken at the NCR site as part of the operation and maintenance program. The current analytical parameter list includes 2 volatiles, 4 semi-volatiles, and 16 metals which were determined to be constituents of interest at the site. Your proposal requests reducing the parameters to 5 metals, representing those constituents which have been measured above standards with some regularity in past sampling rounds. The sampling program, involving four monitoring wells, has been in effect since 2001 and your proposal reflects trends evident since the program was initiated. Sampling frequency is currently semi-annual (twice a year).

After discussing this matter with NYSDEC with input from the New York State Department of Health, our preference is that the sampling parameters remain the same for the time being. This is due to the significant residential growth around the site in recent years. After the current sampling round, samples are scheduled to be taken annually. EPA approves changing the current monitoring program only to the extent that the volatiles and semi-volatiles analysis can be conducted every two years while the metals analysis be conducted annually. EPA will, however, consider a further frequency reduction in the future as more data are collected.



Please call me at (212) 637-4278 if you have any questions on this matter.

Sincerely yours,

A handwritten signature in dark ink, appearing to read "Michael J. Negrelli", with a long horizontal flourish extending to the right.

Michael J. Negrelli  
Remedial Project Manager  
New York Remediation Branch

cc: J. Konsella - NYSDEC/Region 9  
B. Sadowski - NYSDEC/Region 9

# **APPENDIX C**

## **WATER LEVEL RECORDS**

## WATER LEVEL RECORD

PROJECT NAME: Niagara County Refuse Site LOCATION: Wheatfield, New York

DATE: 10/7/02  
(MM DD YY)

CREW MEMBERS: Richard C. Becken

Observation Well	Time of Measurement	Top of Casing Elevation A	Depth to Water B	Water Level Elevation A-B
		feet	feet	feet
East "A"	1430	598.93	24.98	573.95
East "B"	1445	596.23	19.86	576.37
East "C"	1455	598.69	19.99	578.70
East "D"	1510	593.20	15.19	578.01
NCR-3S	1405	579.60	dry	
NCR-4S	1355	591.88	dry	
NCR-5S	1420	597.34	10.89	586.35
NCR-13S	1325	593.13	7.44	585.69

### Wet Wells

		depth of water		
WWA	1315	~12"		
WWB	1345	~10"		
WWC	<del>1315</del> 1400	~8"		
WWD	1330	~10"		

Total System

Time of

Flow

Measurement

385172.00	1315

## WATER LEVEL RECORD

PROJECT NAME: Niagara County Refuse Site LOCATION: Wheatfield, New York

DATE: 12/8/02  
(MM DD YY)

CREW MEMBERS: Richard C. Becken

Observation Well	Time of Measurement	Top of Casing Elevation A	Depth to Water B	Water Level Elevation A-B
		feet	feet	feet
East "A"	1230	598.93	24.96	573.97
East "B"	1245	596.23	19.85	576.38
East "C"	1300	598.69	19.97	578.72
East "D"	1320	593.20	15.11	578.09
NCR-3S	1125	599.60	dry	
NCR-4S	1100	591.88	dry	
NCR-5S	1000	597.34	dry	
NCR-13S	1020	593.13	7.7	585.43

### Wet Wells

		depth of water		
WWA	1415	~10"		
WWB	1045	~10"		
WWC	1130	~6"		
WWD	1035	~12"		

Total System Flow      Time of Measurement

38561030	1415



## WATER LEVEL RECORD

PROJECT NAME: Niagara County Refuse Site LOCATION: Wheatfield, New York

DATE: 10/9/11/7/0/7  
(MM DD YY)

CREW MEMBERS: Richard C. Becken

Observation Well	Time of Measurement	Top of Casing Elevation A	Depth to Water B	Water Level Elevation A-B
		feet	feet	feet
East "A"	1710	598.93	25.03	573.90
East "B"	1710	596.23	19.81	576.42
East "C"	1655	598.69	20.19	578.50
East "D"	1635	593.20	15.16	578.04
NCR-3S	1515	579.60	dry	
NCR-4S	1530	591.88	dry	
NCR-5S	1540	597.37	dry	
NCR-13S	1520	593.13	dry	

## Wet Wells

		depth of water		
WWA	1525	~8"		
WWB	1535	~10"		
WWC	1510	~8"		
WWD	1545	~9"		

Total System Flow	Time of Measurement

FORM 16

**APPENDIX D**

**MONTHLY INSPECTION LOGS**

# MONTHLY INSPECTION LOG

PROJECT NAME: Niagara County Refuse Site

LOCATION: Wheatfield, New York

DATE:

10/7/02  
(MM DD YY)

INSPECTOR(S):

RC Becker

Item	Inspect For	Action Required	Comments
1. Perimeter Collection System/Off-Site Foremain			
Manholes	<ul style="list-style-type: none"> <li>- cover on securely</li> <li>- condition of cover</li> <li>- condition of inside of manhole</li> <li>- flow conditions</li> </ul>	<p>OK</p> <p>OK</p> <p>OK</p> <p>no flow</p>	
Wet Wells	<ul style="list-style-type: none"> <li>- cover on securely</li> <li>- condition of cover</li> <li>- condition of inside of wet well</li> </ul>	<p>OK</p> <p>OK</p> <p>OK</p>	
2. Landfill Cap			
Vegetated Soil Cover	<ul style="list-style-type: none"> <li>- erosion</li> <li>- bare areas</li> <li>- washouts</li> <li>- leachate seeps</li> <li>- length of vegetation</li> <li>- dead/dying vegetation</li> </ul>	<p>none</p> <p>none</p> <p>none</p> <p>none</p> <p>short</p> <p>no</p>	

FORM 1

# MONTHLY INSPECTION LOG

PROJECT NAME: Niagara County Refuse Site

LOCATION: Wheatfield, New York

DATE:

10/10/2017  
(MM DD YY)

INSPECTOR(S):

RC Belken

Item	Inspect For	Action Required	Comments
2. Landfill Cap (continued)			
Access Roads	- bare areas, dead/dying veg.	none	
	- erosion	none	
	- potholes or puddles	none	
	- obstruction	none	
3. Wetlands (Area "F")			
	- dead/dying vegetation	none	
	- change in water budget	low water	
	- general condition of wetlands	OK	
4. Other Site Systems			
Perimeter Fence	- integrity of fence	OK	
	- integrity of gates	OK	
	- integrity of locks	OK	
	- placement and condition of signs	OK	

FORM 1

# MONTHLY INSPECTION LOG

PROJECT NAME: Niagara County Refuse Site

LOCATION: Wheatfield, New York

INSPECTOR(S):

*RL Balken*

DATE:

07/02/07  
(MM DD YY)

Item	Inspect For	Action Required	Comments
4. Other Site Systems (continued)			
Drainage Ditches/ Swale Outlets	- sediment build-up	<i>none</i>	
	- erosion	<i>none</i>	
	- condition of erosion protection	<i>OK</i>	
	- flow obstructions	<i>none</i>	
	- dead/dying vegetation	<i>none</i>	
Culverts	- cable concrete/gabion mats and riprap	<i>OK</i>	
	- sediment build-up	<i>none</i>	
	- erosion	<i>none</i>	
Gas Vents Wells	- condition of erosion protection	<i>OK</i>	
	- flow obstructions	<i>none</i>	
	- intact /damage	<i>good condition</i>	
	- locks secure	<i>OK</i>	

FORM 1

# MONTHLY INSPECTION LOG

PROJECT NAME: Niagara County Refuse Site

LOCATION: Wheatfield, New York

INSPECTOR(S):

*RC Baker*

DATE:

08/20/07  
(MM DD YY)

Item	Inspect For	Action Required	Comments
<b>1. Perimeter Collection System/Off-Site Foremain</b>			
Manholes	- cover on securely	<i>OK</i>	
	- condition of cover	<i>good</i>	
	- condition of inside of manhole	<i>good</i>	
	- flow conditions	<i>no flow</i>	
Wet Wells	- cover on securely	<i>yes</i>	
	- condition of cover	<i>good</i>	
	- condition of inside of wet well	<i>good</i>	
<b>2. Landfill Cap</b>			
Vegetated Soil Cover	- erosion	<i>none</i>	
	- bare areas	<i>none</i>	
	- washouts	<i>none</i>	
	- leachate seeps	<i>none</i>	
	- length of vegetation	<i>medium to short</i>	
	- dead/dying vegetation	<i>none</i>	

FORM 1

# MONTHLY INSPECTION LOG

PROJECT NAME: Niagara County Refuse Site

LOCATION:

Wheatfield, New York

INSPECTOR(S):

*Dc Baker*

DATE:

10/8/2017  
(MM DD YY)

Item

Inspect For

Action Required

Comments

## 2. Landfill Cap (continued)


Access Roads

- bare areas, dead/dying veg.
- erosion
- potholes or puddles
- obstruction

*none*  
*none*  
*none*  
*none*

## 3. Wetlands (Area "F")

- dead/dying vegetation
- change in water budget
- general condition of wetlands

*none*  
*low water level*  
*fair*

## 4. Other Site Systems


Perimeter Fence

- integrity of fence
- integrity of gates
- integrity of locks
- placement and condition of signs

*good*  
*good*  
*good*  
*good*

FORM 1



# MONTHLY INSPECTION LOG

PROJECT NAME: Niagara County Refuse Site

LOCATION: Wheatfield, New York

INSPECTOR(S):

*R C Becker*

DATE:

*10/8/02*  
(MM DD YY)

Item	Inspect For	Action Required	Comments
<b>4. Other Site Systems (continued)</b>			
Drainage Ditches/ Swale Outlets	- sediment build-up	<i>none</i>	
	- erosion	<i>none</i>	
	- condition of erosion protection	<i>good</i>	
	- flow obstructions	<i>none</i>	
	- dead/dying vegetation	<i>none</i>	
Culverts	- cable concrete/gabion mats and riprap	<i>good</i>	
	- sediment build-up	<i>none</i>	
	- erosion	<i>none</i>	
Gas Vents Wells	- condition of erosion protection	<i>good</i>	
	- flow obstructions	<i>none</i>	
	- intact / damage	<i>good condition</i>	
	- locks secure	<i>yes</i>	

FORM 1



# MONTHLY INSPECTION LOG

PROJECT NAME: Niagara County Refuse Site

LOCATION: Wheatfield, New York

INSPECTOR(S):

*PC Becker*

DATE:

08/01/07  
(MM DD YY)

Item	Inspect For	Action Required	Comments
<b>1. Perimeter Collection System/Off-Site Forecmain</b>			
Manholes	- cover on securely	OK	
	- condition of cover	OK	
	- condition of inside of manhole	OK	
	- flow conditions	no flow	
Wet Wells	- cover on securely	OK	
	- condition of cover	OK	
	- condition of inside of wet well	OK	
<b>2. Landfill Cap</b>			
Vegetated Soil Cover	- erosion	none	
	- bare areas	none	
	- washouts	none	
	- leachate seeps	none	
	- length of vegetation	short	
	- dead/dying vegetation	extreme dry conditions	

FORM 1

# MONTHLY INSPECTION LOG

PROJECT NAME: Niagara County Refuse Site

LOCATION:

Wheatfield, New York

DATE:

06/08/07  
(MM DD YY)

INSPECTOR(S):

EC Baker

Item	Inspect For	Action Required	Comments
2. Landfill Cap (continued)			
<div> <div></div> <div></div> <div></div> <div></div> </div> Access Roads	- bare areas, dead/dying veg.	none	
	- erosion	none	
	- potholes or puddles	none	
	- obstruction	none	
3. Wetlands (Area "F")			
	- dead/dying vegetation	none	
	- change in water budget	low water	
	- general condition of wetlands	OK	
4. Other Site Systems			
<div> <div></div> <div></div> <div></div> <div></div> </div> Perimeter Fence	- integrity of fence	OK	
	- integrity of gates	OK	
	- integrity of locks	OK	
	- placement and condition of signs	OK	

FORM 1

# MONTHLY INSPECTION LOG

PROJECT NAME: Niagara County Refuse Site

LOCATION:

Wheatfield, New York

INSPECTOR(S):

*EC Becker*

DATE:

10/10/07  
(MM DD YY)

Item

Inspect For

Action Required

Comments

## 4. Other Site Systems (continued)

Drainage Ditches/  
Swale Outlets

- sediment build-up
- erosion
- condition of erosion protection
- flow obstructions
- dead/dying vegetation
- cable concrete/gabion mats and riprap

*none*

*none*

*OK*

*none*

*none*

*OK*

Culverts

- sediment build-up
- erosion
- condition of erosion protection
- flow obstructions

*none*

*none*

*OK*

*none*

Gas Vents

- intact / damage
- locks secure

*intact*

*OK*

--	--

FORM 1

**APPENDIX E**  
**MAINTENANCE RECORD LOGS**

## MAINTENANCE RECORD LOG

PROJECT NAME: Niagara County Refuse Site

LOCATION: Wheatfield, New York

CREW MEMBERS: RC Becker

1. Date: 07/20/07 (MM DD YY)

Time: 1000 (HH mm)

Scheduled/Unscheduled: scheduled

Type of Maintenance Performed: repair float switches in wet well A

2. Company Performing Maintenance

Name: O+M Enterprises, Inc.

Address: 7134 Marigold Dr.  
North Tonawanda, NY 14120

Contact Name: Richard C Becker

3. Methods Used:

Removed float switches from well wall, attached some float switches to a 15' one inch PVC conduit, lowered conduit into wet well, adjusted level of switches.

Description of Material Removed:

none

Problems/Comments:

none

7/20/07

DATE

Richard C Becker

INSPECTOR

Richard C Becker

INSPECTOR'S SIGNATURE

FORM 2

## MAINTENANCE RECORD LOG

PROJECT NAME: Niagara County Refuse Site

LOCATION: Wheatfield, New York

CREW MEMBERS: RC Becker

1. Date: 07/26/07 (MM DD YY)

Time: 0900 (HH mm)

Scheduled/Unscheduled: scheduled

Type of Maintenance Performed: mow grass around perimeter fence

2. Company Performing Maintenance

Name: O & M Enterprises, Inc.

Address: 7134 Marigold Dr.  
North Tonawanda, NY 14120

Contact Name: Richard C Becker

3. Methods Used:

used tractor & mower to mow around perimeter fence of  
landfill

Description of Material Removed:

none

Problems/Comments:

none

7/26/07

DATE

Richard C Becker

INSPECTOR

Richard C Becker

INSPECTOR'S SIGNATURE

FORM 2



## MAINTENANCE RECORD LOG

PROJECT NAME: Niagara County Refuse Site

LOCATION: Wheatfield, New York

CREW MEMBERS: Richard C Becken

1. Date: 07/26/07 (MM DD YY)

Time: 1030 (HH mm)

Scheduled/Unscheduled: unscheduled

Type of Maintenance Performed: repair rear gate

2. Company Performing Maintenance

Name: D&M Enterprises, Inc.

Address: 7134 Mangold Dr.  
North Tonawanda, NY 14120

Contact Name: Pete Becker

3. Methods Used:

Vandals removed gate hinge pins on one of two rear gates, replaced  
pins in hinges installed cotter pins in hinge pins.

Description of Material Removed:

none

Problems/Comments:

none

7/26/07  
DATE

Richard C Becken  
INSPECTOR

Pete Becker  
INSPECTOR'S SIGNATURE

FORM 2

## MAINTENANCE RECORD LOG

PROJECT NAME: Niagara County Refuse Site

LOCATION: Wheatfield, New York

CREW MEMBERS: RC Becker

1. Date: 08/03/07 (MM DD YY)

Time: 0900 (HH mm)

Scheduled/Unscheduled: Unscheduled

Type of Maintenance Performed: gate repair

2. Company Performing Maintenance

Name: QAM Enterprises Inc.

Address: 7134 Manigold Dr.  
North Tonawanda, NY 14120

Contact Name: Richard Becker

3. Methods Used:

Due to vandals removing hinge pins on gates, I placed a  
section of chain with a lock on the hinge and of the gates  
securing the gate to the fence and post.

Description of Material Removed:

none

Problems/Comments:

none

8/3/07

DATE

Richard C Becker

INSPECTOR

Richard C Becker

INSPECTOR'S SIGNATURE

FORM 2



## MAINTENANCE RECORD LOG

PROJECT NAME: Niagara County Refuse Site

LOCATION: Wheatfield, New York

CREW MEMBERS: RC Becken

1. Date: 09/12/07 (MM DD YY)

Time:      (HH mm)

Scheduled/Unscheduled: Scheduled

Type of Maintenance Performed: annual grass mowing

2. Company Performing Maintenance

Name: D&M Enterprises, Inc.

Address: 7134 Marigold Dr.  
North Tonawanda, NY 14120

Contact Name: Rick Becken

3. Methods Used:

tractor with mower

Description of Material Removed:

none

Problems/Comments:

none

9/12/07

DATE

RC Becken

INSPECTOR

Rick D Becken

INSPECTOR'S SIGNATURE

FORM 2

## MAINTENANCE RECORD LOG

PROJECT NAME: Niagara County Refuse Site

LOCATION: Wheatfield, New York

CREW MEMBERS:

RC Becker

1. Date: 09/13/07 (MM DD YY)

Time:      (HH mm)

Scheduled/Unscheduled: Scheduled

Type of Maintenance Performed: annual grass mowing

2. Company Performing Maintenance

Name: D+M Enterprises, Inc.

Address: 7134 Marigold Dr.  
North Tonawanda, NY 14120

Contact Name: Rick Becker

3. Methods Used:

tractor with mower

Description of Material Removed:

none

Problems/Comments:

none

9/13/07

DATE

RC Becker

INSPECTOR

Rick Becker

INSPECTOR'S SIGNATURE

FORM 2

## MAINTENANCE RECORD LOG

PROJECT NAME: Niagara County Refuse Site

LOCATION: Wheatfield, New York

CREW MEMBERS:

RC Becker

1. Date: 09/14/07 (MM DD YY)

Time:      (HH mm)

Scheduled/Unscheduled: Scheduled

Type of Maintenance Performed: grass mowing annual

2. Company Performing Maintenance

Name: O+M Enterprises Inc.

Address: 7134 Marigold Dr.  
North Tonawanda, NY 14120

Contact Name: Rick Becker

3. Methods Used:

tractor with mower

Description of Material Removed:

none

Problems/Comments:

none

09/14/07

DATE

RC Becker

INSPECTOR

Richard Becker

INSPECTOR'S SIGNATURE

FORM 2

## MAINTENANCE RECORD LOG

PROJECT NAME: Niagara County Refuse Site

LOCATION: Wheatfield, New York

CREW MEMBERS:

RC Becken

1. Date: 09/17/07 (MM DD YY)

Time:      (HH mm)

Scheduled/Unscheduled: scheduled

Type of Maintenance Performed: annual grass mowing

2. Company Performing Maintenance

Name: Orm Enterprises Inc.

Address: 7134 Margot Dr.  
North Tonawanda, NY

Contact Name: Rick Becken

3. Methods Used:

tractor with mower

Description of Material Removed:

none

Problems/Comments:

none

9/17/07

DATE

RC Becken

INSPECTOR

Rick Becken

INSPECTOR'S SIGNATURE

FORM 2

**APPENDIX F**

**COMPACT DISK CONTAINING REPORT**