

QUARTERLY DATA SUMMARY REPORT

NIAGARA COUNTY REFUSE DISTRICT SITE

Wheatfield, Niagara County, New York

(NYSDEC Site No. 9-32-026)

SUBMITTED TO:



UNITED STATES
ENVIRONMENTAL PROTECTION
AGENCY



NEW YORK STATE
DEPARTMENT OF
ENVIRONMENTAL CONSERVATION

SUBMITTED FOR:

**NIAGARA COUNTY REFUSE DISTRICT
AND PRP GROUP**

PREPARED BY:

PARSONS

40 La Riviere Drive, Suite 350
Buffalo, New York 14202
(716) 541-0730 Fax (716) 541-0760

October 2008

QUARTERLY DATA SUMMARY REPORT

NIAGARA COUNTY REFUSE DISTRICT SITE **Wheatfield, Niagara County, New York** **(NYSDEC Site No. 9-32-026)**

Prepared For:

NIAGARA COUNTY REFUSE DISTRICT AND PRP GROUP

Prepared By:

PARSONS
40 La Riviere Drive, Suite 350
Buffalo, New York 14202
(716) 541-0730 Fax (716) 541-0760

October 2008

TABLE OF CONTENTS

Page No.

SECTION 1 INTRODUCTION.....	1-1
1.1 Procedures	1-1
1.1.1 Effluent Sampling.....	1-1
1.1.2 Groundwater Sampling.....	1-1
1.1.3 Water Level Measurements.....	1-1
1.1.4 Site Inspections.....	1-2
SECTION 2 RESULTS	2-1
2.1 Effluent Samples	2-1
2.2 Groundwater Analytical Results	2-1
2.3 Water Levels.....	2-1
2.4 Site Inspections.....	2-1
2.5 Maintenance	2-2
2.6 OM&M Oversight	2-3
SECTION 3 CONCLUSIONS	3-1
SECTION 4 REFERENCES.....	4-1
APPENDIX A CITY OF NORTH TONAWANDA INDUSTRIAL WASTEWATER DISCHARGE PERMIT	
APPENDIX B CORRESPONDENCE	
APPENDIX C WATER LEVEL RECORDS	
APPENDIX D MONTHLY INSPECTION LOGS	
APPENDIX E MAINTENANCE RECORD LOGS	
APPENDIX F COMPACT DISK CONTAINING REPORT	

TABLE OF CONTENTS	
	<u>Page No.</u>

LIST OF TABLES

Table 2.1 Quarterly Site Inspection Results Summary 2-4

LIST OF FIGURES

Figure 1.1 Site Plan..... 1-2

SECTION 1

INTRODUCTION

The Niagara County Refuse Site Potentially Responsible Parties (PRP) Group completed a remedial action at the Niagara County Refuse Site (Site), Wheatfield, New York in 2000. The remedial action was conducted in accordance with the United States Environmental Protection Agency (USEPA) Record of Decision (USEPA, 1993) and the United States District Court Consent Decree (USEPA, 1995). The PRP Group is currently conducting operations, maintenance, and monitoring (OM&M) in accordance with the USEPA-approved OM&M Manual (CRA, 2000). This data report summarizes third quarter monitoring activities from July through September 2008.

1.1 PROCEDURES

1.1.1 Effluent Sampling

A revised Industrial Wastewater Discharge Permit (Appendix A) was issued by the City of North Tonawanda, and is effective from February 28, 2007 through April 1, 2010. The revised permit has a reduced analytical parameter list compared to the original permit, and a semi-annual sampling frequency. Prior to the revised permit, samples were collected monthly. In 2008, an effluent sample was collected in March and September from Wet Well A, which receives water from the leachate collection system surrounding the landfill. Composite 24-hour samples were collected from Wet Well A using an automated sampler. The next effluent sample is scheduled to be collected in March 2009.

1.1.2 Groundwater Sampling

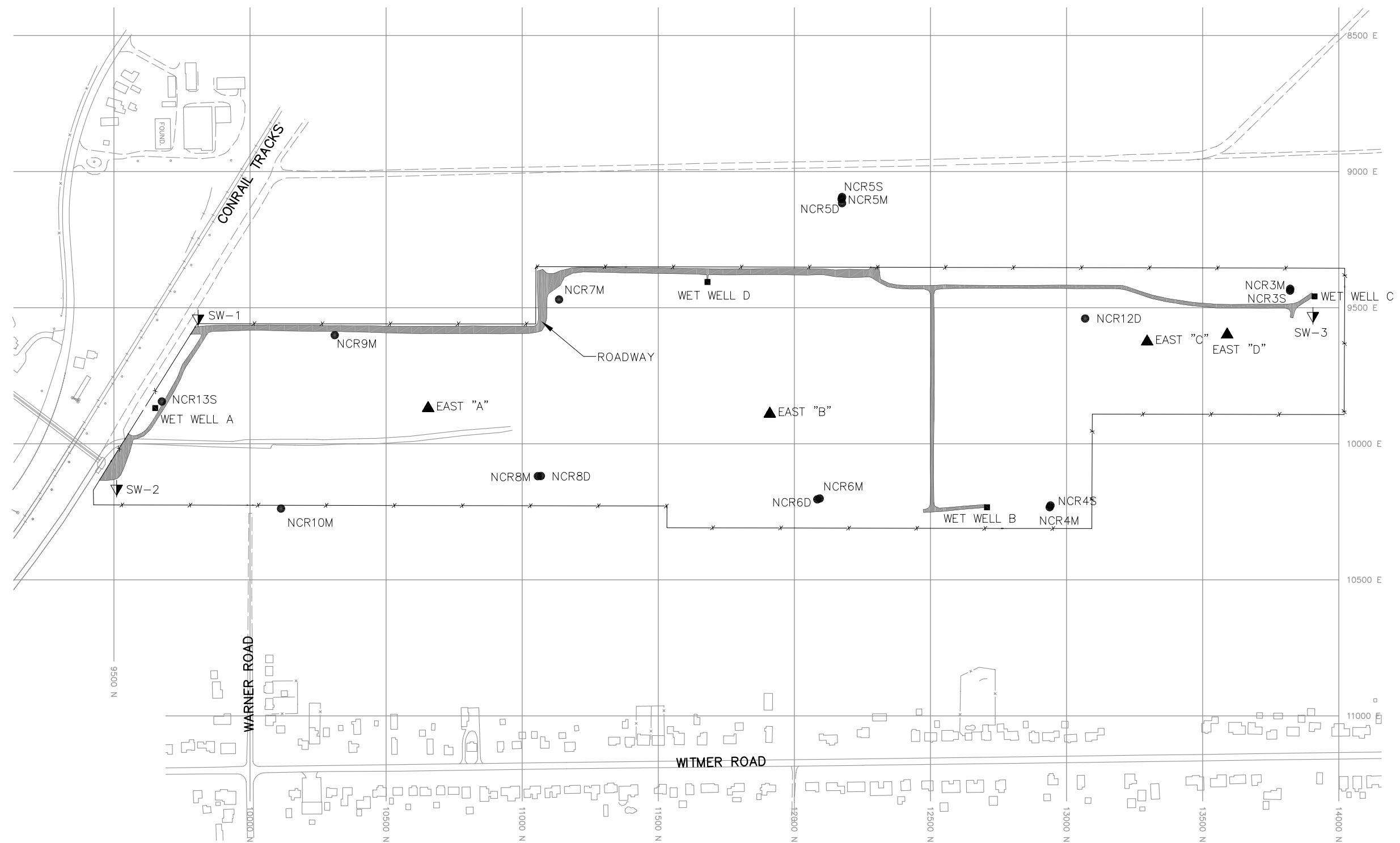
Groundwater samples were not collected during this reporting period. In accordance with the approved OM&M Plan (CRA, 2000), the groundwater sampling frequency was decreased from a quarterly to a semi-annual basis in 2003, and from a semi-annual to an annual basis beginning in 2006. Annual groundwater sample collection will continue for an undetermined time period. The next round of groundwater samples is scheduled to be collected in November 2008.

1.1.3 Water Level Measurements

Water levels were measured during monthly Site inspections in July, August, and September 2008. Water levels were measured from four observation well locations (piezometers East A, East B, East C, and East D), four effluent monitoring locations (wet wells A, B, C, and D), and four monitoring well locations (NCR-3S, NCR-4S, NCR-5S, and NCR-13S). The water levels were measured with an electronic water level indicator, and reported as an elevation above mean sea level. Figure 1.1 shows the locations of the water level monitoring points.

1.1.4 Site Inspections

Monthly Site inspections were conducted on July 10, August 7, and September 11, 2008. During the Site inspections, the manholes, wet wells, landfill cap, wetlands, perimeter fence, drainage ditches, swale outlets, culverts, gas vents, and monitoring wells were each visually inspected.



LEGEND

- | | |
|--------------|---|
| ▲ EAST "A" | WATER LEVEL MONITORING WELL LOCATION |
| ▼ SW-2 | SURFACE WATER MONITORING LOCATION |
| ■ WET WELL A | EFFLUENT MONITORING LOCATION |
| ● NCR13S | GROUNDWATER QUALITY MONITORING LOCATION |



SCALE: 1"=400'

FIGURE 1.1

NIAGARA COUNTY REFUSE SITE
WHEATFIELD, NEW YORK
SITE PLAN

PARSONS

180 LAWRENCE BELL DRIVE, SUITE 104, WILLIAMSVILLE, N.Y. 14221, PHONE: 716-633-7074

SECTION 2

RESULTS

This section describes the results of the third quarter OM&M activities conducted from July through September 2008. Activities during this quarter included effluent sampling, water level measurements, maintenance work, and Site inspections.

2.1 EFFLUENT SAMPLES

One effluent sample was collected during the reporting period (September 5, 2008). The effluent sample was collected by O&M Enterprises, and analyzed by the City of North Tonawanda. The analytical results from effluent samples are used by the City to confirm that the effluent received from the Site meets the criteria for acceptance by the City treatment system. These data are not presented in the quarterly monitoring reports, but will be summarized in the 2008 annual monitoring report. The revised City of North Tonawanda Industrial Wastewater Discharge Permit (February 31, 2007 through April 1, 2010) has been included in Appendix A. As can be seen in the revised permit, the analytical parameters and the sampling frequency have been reduced from the original permit.

2.2 GROUNDWATER ANALYTICAL RESULTS

Monitoring wells NCR-3S, NCR-4S, NCR-5S, and NCR-13S were not sampled during this reporting quarter, due to the current annual groundwater sampling schedule specified in the OM&M Manual. Groundwater sample collection is planned for November 2008, assuming groundwater levels are adequate. The locations of the monitoring wells are provided in Figure 1.1. The USEPA, NYSDOH, and NYSDEC have agreed to reduce the number of analytical parameters monitored in the groundwater samples (see Appendix B).

2.3 WATER LEVELS

Results of water level measurements collected during this reporting period are presented in Appendix C. Water levels were collected from the monitoring locations on a monthly basis. Water levels in the monitoring wells generally decreased slightly over the reporting quarter. Monitoring well NCR-3S contained no measurable water in July and September. NCR-5S contained no measurable water in August and September. Measured water levels were consistent with levels observed in previous years between July and September.

2.4 SITE INSPECTIONS

A summary of the Site inspection findings is included in Table 2.1. Copies of the Site Inspection Logs have been included in Appendix D.

Each of the inspections found the manholes and wet wells to be in good condition. Water levels were measured in the wet wells during the inspections.

Examination of the landfill cap vegetative cover included checking for erosion, bare areas, wash-outs, leachate seeps, height of vegetation, and assessing the condition of the vegetation. No surface erosion, bare spots, or leachate seeps were noted. The grass covering the landfill was relatively high during the reporting period. The landfill cover was mowed in September.

Additionally, during the examination of the landfill cap, the access roads were examined for erosion, potholes/puddles, and obstructions. All aspects of the access roads that were examined were deemed acceptable.

The wetlands were visually examined to assess the condition of the vegetation, change in water levels, and to observe general conditions. Wetland vegetation was noted to be in good condition during the Site inspections. A slightly higher than normal water level was noted in the wetland area during the August site inspection and a low water level was noted in September.

Holes were found cut into the perimeter fence during the July and September inspections. The Sheriff's Department was contacted and the fence was repaired. Additionally, during the July inspection, a lock and chain on the gate on the east side of the landfill was found cut. The lock and chain were replaced.

All other parts of the landfill system which were examined, including the drainage ditches, swale outlets, culverts, and gas vents, were found to be in acceptable condition during the reporting period.

2.5 MAINTENANCE

Scheduled maintenance during the reporting period included cleaning and inspecting pumps, repairs to force main in wet well C, mowing the perimeter of the Site, and mowing the landfill cover. Copies of the Maintenance Record Logs have been included in Appendix E.

- On July 11, the pumps in wet wells A and D were removed, cleaned, inspected for proper operation, and re-installed.
- On July 31, the strip of grass near the perimeter fence was mowed, along with paths to wells.
- Between September 6 and 13 the landfill cover was mowed.
- On September 18 the security light on the south side of the control building was replaced.

Occasional unscheduled maintenance at the landfill is required.

- On July 10, damage due to vandalism was identified (a cut lock and chain) at a gate on the east side of the landfill, and was promptly repaired. A hole cut into the perimeter fence on the west side of the landfill was also identified. The Niagara County Sheriff's Department was called and report number 32185 was filed. Additional repair was completed to the fence on September 18.
- On August 25, 2008, a small leak was identified on a section of the force main pipe at Wet Well C. This section of pipe was replaced.

No major repairs were required.

2.6 OM&M OVERSIGHT

Parsons' Quality Assurance (QA) work included periodic oversight of OM&M activities by O&M Enterprises, Inc., review of monthly inspection and monitoring data, and periodic communications with O&M Enterprises. Upon completion of work performed by O&M Enterprises, routine activity report forms were completed. Parsons reviewed the report forms for completeness, and recorded problems, if any, on the forms (Appendices C, D, and E).

Table 2.1
Quarterly Site Inspection Results Summary

Inspection Item	Acceptable	Requires Action	Comments
Manholes	X		
Wet Wells	X		Water levels were measured monthly.
Wetlands	X		Water level was noted to be normal during the July inspection, higher than normal during the August inspection, and below normal during the September inspection. Water levels were within the historical range.
Perimeter Fence	X		The lock and chain were replaced on a gate on east side of landfill and a hole cut in the fence was repaired on the west side of the landfill.
Condition of Roads	X		No potholes were observed.
Integrity of the Cap	X		No erosion was observed.
Drainage Ditches/Swales	X		
Gas Venting System	X		
Wells	X		Water levels were measured monthly.
Culverts	X		
Other	X		No issues were identified during the reporting period with any other aspects of the site.

SECTION 3

CONCLUSIONS

The following conclusions were developed based on the data collected during this reporting period:

- The landfill was inspected monthly and was appropriately maintained. Repairs were made as necessary following identification of problems or maintenance needs.
- An effluent sample was collected during the reporting period as required by the discharge permit, and the sample was analyzed by the City of North Tonawanda.
- As specified in the OM&M Manual, annual groundwater monitoring commenced in 2006. Groundwater samples are currently scheduled to be collected in November 2008, assuming sufficient groundwater is available in the wells.
- Water levels were measured in the wet wells, monitoring wells, and the observation wells on the landfill on a monthly basis. Water levels in the monitoring wells generally increased between July and August and decreased between August and September. One of the four wells contained no measurable water in July and August. Two of the four wells contained no measurable water in September. Measured water levels were consistent with levels observed in previous years between July and September.
- Wetlands vegetation appeared healthy, and in good condition, based on monthly visual assessments.

SECTION 4

REFERENCES

Record of Decision, Niagara County Refuse Site, Wheatfield, Niagara County, New York; United States Environmental Protection Agency, September 1993.

Consent Decree, Docket 946-849; United States Environmental Protection Agency, February 3, 1995.

Operations, Maintenance and Monitoring Manual for Niagara County Refuse District Site Remedial Construction, Wheatfield, Niagara County, New York; Conestoga-Rovers & Associates, December 2000.

APPENDIX A
CITY OF NORTH TONAWANDA INDUSTRIAL WASTEWATER
DISCHARGE PERMIT

CITY OF NORTH TONAWANDA
4/5/95
INDUSTRIAL WASTEWATER DISCHARGE PERMIT

Permit Number: 2628010

In accordance with the provisions of the Clean Water Act as amended, all terms and conditions set forth in this permit, the City of North Tonawanda Local Sewer Use Ordinance and any applicable Federal, State or local laws or regulations, authorization is hereby granted to: Niagara County Department of Public Works

Engineering Department

59 Park Avenue

Lockport, New York 14094

Classified by S.I.C. Number(s): N/A

for the discharge of: groundwater and other wastes generated during Remedial Action construction and implementation into the City of North Tonawanda Sewerage System.

This permit is granted in accordance with an application filed in the offices of the Treatment Plant Superintendent located at 830 River Road, and in conformity with specifications and other required data submitted in support of the above named application, all of which are filed with and considered part of this permit. This permit is also granted in accordance with discharge limitations and requirements, monitoring and reporting requirements, and all other conditions set forth in Parts I and II hereof.

Effective this 31st day of February, 2007

To expire the 1st day of April, 2010



Treatment Plant Superintendent

Signed this 31st day of January, 2007

PERMIT NUMBER: 2628010

Part I
Page of 4**PART I. SPECIFIC CONDITIONS****A. DISCHARGE LIMITATIONS AND MONITORING REQUIREMENTS**

During the period beginning the effective date of this permit and lasting until the expiration date, discharge from the permitted facility outfall(s) shall be limited and monitored by the permittee as specified below (Refer to attached map for sampling and monitoring sites).

Sample Point	Parameter	Discharge Limitations mg/l except pH Daily Max.	Sampling Period	Sampling Type
001	Total Flow		1 Sampling Day Monthly	continuous.
2/	Aluminum	2.0	1 Sample Day semi-annual	24 hr comp.
	Lead	4.6	1 Sampling Day semi-annual	24 hr comp.
	Iron	10	1 Sampling Day semi-annual	24 hr comp.
2/	Magnesium	Monitor Only	1 Sampling Day semi-annual	24 hr comp.
2/	Sodium	Monitor Only	1 Sampling Day semi-annual	24 hr comp.
	pH	Monitor Only	1 Sampling Day semi-annual	grab
2/	BOD	Monitor Only	1 Sampling Day semi-annual	24 hr comp.
2/	Total Suspended Solids	Monitor Only	1 Sampling Day semi-annual	24 hr comp.

Part I
Page 1 of 4

B. DISCHARGE REPORTING REQUIREMENTS

[illegible]

PERMIT NUMBER: 2628010**Part I**
Page 4 of 4**PART I. SPECIFIC CONDITIONS****C. SPECIAL REQUIREMENTS**

- 1) This permit is written for a duration of three years. Upon renewal of this permit, all parameters will be re-evaluated to develop a parameter list based on chemical concentrations present in the extracted groundwater.
- 2) Frequency of monitoring is to be re-evaluated yearly..
- 3) All monitoring reports (initial and subsequent), are to be received by the Superintendent, no later than thirty (30) days after receipt of validated data.
- 4) It is required that the Permittee have a Site Operations Manual available at all times. All emergency phone numbers must be listed in an appropriate place for easy access by operations personnel. The permittee shall not discharge to the City of North Tonawanda sewerage treatment works during overflow conditions. The permittee is required to cease all pumping operations upon verbal request of the North Tonawanda Wastewater Treatment Plant Superintendent or his assigns. Pumping operations shall not recommence until approved by the North Tonawanda Wastewater Treatment Plant Superintendent or his assigns.
- 5) Analysts are required to use GC/MS method detection limits for most organics (if GC/MS is appropriate); GC/ECD for PCBS/Pesticides and GF method detection limits for metals (where GF is appropriate), as contained in attachment 5 of the NYSDEC TOGs 1.3.8 - New Discharges to Publicly Owned Treatment Works - dated 10/26/94.

APPENDIX B
CORRESPONDENCE



UNITED STATES ENVIRONMENTAL PROTECTION AGENCY
REGION 2
290 BROADWAY
NEW YORK, NY 10007-1866

NOV 21 2005

BY FEDEX

Mr. Eric Felter
Project Manager
Parsons
180 Lawrence Bell Drive, Suite 104
Williamsville, New York 14221

Re: Niagara County Refuse Site, Wheatfield, New York: Request for the Reduction of Analytical Parameters in Groundwater Samples

Dear Mr. Felter:

The U.S. Environmental Protection Agency (EPA) and New York State Department of Environmental Conservation (NYSDEC) have reviewed your letter dated October 3, 2005 prepared by Parsons on behalf of the Niagara County Refuse (NCR) Site PRP Group requesting a reduction in the analytical parameters in groundwater samples taken at the NCR site as part of the operation and maintenance program. The current analytical parameter list includes 2 volatiles, 4 semi-volatiles, and 16 metals which were determined to be constituents of interest at the site. Your proposal requests reducing the parameters to 5 metals, representing those constituents which have been measured above standards with some regularity in past sampling rounds. The sampling program, involving four monitoring wells, has been in effect since 2001 and your proposal reflects trends evident since the program was initiated. Sampling frequency is currently semi-annual (twice a year).

After discussing this matter with NYSDEC with input from the New York State Department of Health, our preference is that the sampling parameters remain the same for the time being. This is due to the significant residential growth around the site in recent years. After the current sampling round, samples are scheduled to be taken annually. EPA approves changing the current monitoring program only to the extent that the volatiles and semi-volatiles analysis can be conducted every two years while the metals analysis be conducted annually. EPA will, however, consider a further frequency reduction in the future as more data are collected.

Please call me at (212) 637-4278 if you have any questions on this matter.

Sincerely yours,

A handwritten signature in dark ink, appearing to read "Michael J. Negrelli", with a long horizontal flourish extending to the right.

Michael J. Negrelli
Remedial Project Manager
New York Remediation Branch

cc: J. Konsella - NYSDEC/Region 9
B. Sadowski - NYSDEC/Region 9

From: Negrelli.Mike@epamail.epa.gov
To: Felter, Eric;
cc: barberwb@bp.com; Raybuck, Mark; richard.pope@Niagaracounty.com;
jakonsel@gw.dec.state.ny.us; bpsadows@gw.dec.state.ny.us;
Subject: Re: NCR Annual GW Sampling
Date: Tuesday, December 11, 2007 9:25:21 AM

Thanks Eric. I will place this email in the file for the record. I agree that we need to wait for there to be enough water in the wells to collect a sample. Keep me posted.

"Felter, Eric"	
<Eric.Felter@parsons.com>	
	To
	Mike Negrelli/R2/USEPA/US@EPA
12/10/2007	cc
09:43 AM	"Raybuck, Mark"
	<Mark.Raybuck@parsons.com> ,
	<richard.pope@Niagaracounty.com> ,
	<barberwb@bp.com>
	Subject
	NCR Annual GW Sampling

Mike,

I wanted to provide you with an update on the status of the annual groundwater sampling at the Niagara County Refuse site. The 2007 annual groundwater sampling has yet to be completed due to a lack of water in the monitoring wells. As of two weeks ago, two of the wells had a few inches of water and two wells had approximately one inch of water. While this is better than previous months, this would have limited sample collection to two wells or less. O&M Enterprises, Inc. plans to check the water levels weekly and evaluate the possibility of sampling during the next few weeks. The annual groundwater sampling may need to be

delayed to the spring of 2008.

Please feel free to call or email if you have any questions or comments.

Regards,
Eric

Eric A. Felter, P.G.
Principal Geologist
Parsons
40 La Riviere Drive, Ste 350
Buffalo, NY 14202
Phone direct: (716) 809-9140
Phone office: (716) 541-0730
Fax: (716) 541-0760
Email: Eric.Felter@parsons.com

SAFETY - MAKE IT PERSONAL

APPENDIX C

WATER LEVEL RECORDS

WATER LEVEL RECORD

PROJECT NAME: NIAGARA COUNTY
REFUSE SITE

LOCATION: Wheatfield, New York

DATE: 07/10/08
(MM D D Y Y)

CREW MEMBERS: RC Becker

Observation Well	Time of Measurement	Top of Casing Elevation A	Depth to Water B	Water Level Elevation A-B
		feet	feet	feet
EAST "A"		598.93	25.49	573.44
EAST "B"		596.23	19.91	576.32
EAST "C"		598.69	20.2	578.49
EAST "D"		593.20	15.4	577.80
NCR-3S		579.60	dry	dry
NCR-4S		591.88	4.53	587.35
NCR-5S		597.34	10.24	587.10
NCR-13S		593.13	7.47	585.66

WET WELLS

Wet Well	Time of Measurement		Depth of Water
WW A	10 ³⁰		~10"
WW B	11 ¹⁵		~10"
WW C	11 ⁰⁰		~8"
WW D	10 ²⁵		~7'

Total System Flow	Time of Measurement
41528200	10 ⁰⁰

FORM 16

WATER LEVEL RECORD

PROJECT NAME: NIAGARA COUNTY
REFUSE SITE

LOCATION: Wheatfield, New York

DATE: 10/8/07/08
(MM D D Y Y)

CREW MEMBERS: RC Becker

Observation Well	Time of Measurement	Top of Casing Elevation A	Depth to Water B	Water Level Elevation A-B
		feet	feet	feet
EAST "A"	1130	598.93	25.44	573.49
EAST "B"	1115	596.23	19.87	576.36
EAST "C"	1105	598.69	20.13	578.56
EAST "D"	1055	593.20	15.34	577.86
NCR-3S	1005	579.60	3.81	575.79
NCR-4S	1020	591.88	3.43	588.45
NCR-5S	1040	597.34	dry	
NCR-13S	0930	593.13	7.26	585.87

WET WELLS

Wet Well	Time of Measurement		Depth of Water
WW A	0915		~10"
WW B	1025		~10"
WW C	1000		~10"
WW D	0945		~8"

Total System Flow	Time of Measurement
41571090	0915

FORM 16

WATER LEVEL RECORD

PROJECT NAME: NIAGARA COUNTY
REFUSE SITE

LOCATION: Wheatfield, New York

DATE: 10/9/11 16/8
(MM D D Y Y)

CREW MEMBERS: RL Becken

Observation Well	Time of Measurement	Top of Casing Elevation A	Depth to Water B	Water Level Elevation A-B
		feet	feet	feet
EAST "A"	1400	598.93	25.5	573.43
EAST "B"	1340	596.23	20.04	576.19
EAST "C"	1330	598.69	20.44	578.25
EAST "D"	1315	593.20	15.51	577.69
NCR-3S	1225	579.60	dry	
NCR-4S	1235	591.88	4.27	587.61
NCR-5S	1300	597.34	dry	
NCR-13S	1150	593.13	7.54	585.59

WET WELLS

Wet Well	Time of Measurement		Depth of Water
WW A	1140		~10"
WW B	1245		~8"
WW C	1215		~5"
WW D	1200		~6"

Total System Flow	Time of Measurement
41642265	1140

FORM 16

APPENDIX D

MONTHLY INSPECTION LOGS

MONTHLY INSPECTION LOG

PROJECT NAME: Niagara County Refuse Site

LOCATION: Wheatfield, New York

INSPECTOR(S):

RC Baker

DATE: 07/16/08
(MM DD YY)

Item

Inspect For

Action Required

Comments

1. Perimeter Collection System/Off-Site Forcemain

Manholes

- cover on securely
- condition of cover
- condition of inside of manhole
- flow conditions

--	--	--	--

good
good
good
no apparent flow

Wet Wells

- cover on securely
- condition of cover
- condition of inside of wet well

--	--	--

good
good
good

2. Landfill Cap

Vegetated Soil Cover

- erosion
- bare areas
- washouts
- leachate seeps
- length of vegetation
- dead/dying vegetation

--	--	--	--	--	--

none
none
none
none
tall
none

FORM 1

MONTHLY INSPECTION LOG

PROJECT NAME: Niagara County Refuse Site

LOCATION: Wheatfield, New York

INSPECTOR(S):

R. Becken

DATE: 07/06/08
(MM DD YY)

Item	Inspect For	Action Required	Comments
2. Landfill Cap (continued)			
Access Roads	- bare areas, dead/dying veg.	<i>none</i>	
	- erosion	<i>none</i>	
	- potholes or puddles	<i>none</i>	
	- obstruction	<i>none</i>	
3. Wetlands (Area "F")	- dead/dying vegetation	<i>no</i>	
	- change in water budget	<i>normal</i>	
	- general condition of wetlands	<i>good</i>	
4. Other Site Systems			
Perimeter Fence	- integrity of fence	<i>fence cut west side of landfill</i>	<i>repaired</i>
	- integrity of gates	<i>lock chain cut off 17 gate on east side</i>	<i>replaced</i>
	- integrity of locks	<i>see above</i>	
	- placement and condition of signs	<i>good</i>	

FORM 1

MONTHLY INSPECTION LOG

PROJECT NAME: Niagara County Refuse Site

LOCATION: Wheatfield, New York

INSPECTOR(S):

RC Belf

DATE: 07/16/08
(MM DD YY)

Item	Inspect For	Action Required	Comments
4. <input type="checkbox"/>	Other Site Systems (continued)		
<input type="checkbox"/>	Drainage Ditches/ Swale Outlets		
<input type="checkbox"/>	- sediment build-up	<i>none</i>	
<input type="checkbox"/>	- erosion	<i>none</i>	
<input type="checkbox"/>	- condition of erosion protection	<i>good</i>	
<input type="checkbox"/>	- flow obstructions	<i>none</i>	
<input type="checkbox"/>	- dead/dying vegetation	<i>none</i>	
<input type="checkbox"/>	- cable concrete/gabion mats and riprap	<i>good condition</i>	
<input type="checkbox"/>	Culverts		
<input type="checkbox"/>	- sediment build-up	<i>none</i>	
<input type="checkbox"/>	- erosion	<i>none</i>	
<input type="checkbox"/>	- condition of erosion protection	<i>good</i>	
<input type="checkbox"/>	- flow obstructions	<i>none</i>	
<input type="checkbox"/>	Gas Vents		
<input type="checkbox"/>	- intact /damage	<i>good condition</i>	
<input type="checkbox"/>	Wells		
<input type="checkbox"/>	- locks secure	<i>good</i>	

FORM 1

MONTHLY INSPECTION LOG

PROJECT NAME: Niagara County Refuse Site

LOCATION: Wheatfield, New York

INSPECTOR(S):

R.C. Beken

DATE: 10/8/08
(MM DD YY)

Item	Inspect For	Action Required	Comments
1. Perimeter Collection System/Off-Site Foremain			
Manholes	- cover on securely	yes	
	- condition of cover	good	
	- condition of inside of manhole	good	
	- flow conditions	no apparent flaws	
Wet Wells	- cover on securely	yes	
	- condition of cover	good	
	- condition of inside of wet well	good	
2. Landfill Cap			
Vegetated Soil Cover	- erosion	none	
	- bare areas	none	
	- washouts	none	
	- leachate seeps	none	
	- length of vegetation	high (extremely)	
	- dead/dying vegetation	none	

FORM 1

MONTHLY INSPECTION LOG

PROJECT NAME: Niagara County Refuse Site LOCATION: Wheatfield, New York

DATE: 01 8 07 08
(MM DD YY)

INSPECTOR(S): RC Becker

Item	Inspect For	Action Required	Comments
------	-------------	-----------------	----------

2. Landfill Cap (continued)

	Access Roads	- bare areas, dead/dying veg.	none
		- erosion	none
		- potholes or puddles	none
		- obstruction	none

3. Wetlands (Area "F")

- dead/dying vegetation
- change in water budget
- general condition of wetlands

good
slightly above normal
great

4. Other Site Systems

	Perimeter Fence	- integrity of fence	good
		- integrity of gates	good
		- integrity of locks	good
		- placement and condition of signs	good

MONTHLY INSPECTION LOG

PROJECT NAME: Niagara County Refuse Site

LOCATION: Wheatfield, New York

INSPECTOR(S): RC Reiter

DATE: 10/07/08
(MM DD YY)

Item

Inspect For

Action Required

Comments

4. Other Site Systems (continued)

Drainage Ditches/
Swale Outlets

- sediment build-up

- erosion

- condition of erosion protection

- flow obstructions

- dead/dying vegetation

- cable concrete/gabion mats and
riprap

none

none

good

none

none

good

Culverts

- sediment build-up

- erosion

- condition of erosion protection

- flow obstructions

none

none

good

none

Gas Vents

- intact / damage

Wells

- locks secure

intact

yes

FORM 1

MONTHLY INSPECTION LOG

PROJECT NAME: Niagara County Refuse Site

LOCATION: Wheatfield, New York

INSPECTOR(S): RC Belton

DATE: 09/11/08
(MM DD YY)

Item

Inspect For

Action Required

Comments

1. Perimeter Collection System/Off-Site Foremain

Manholes

- cover on securely
- condition of cover
- condition of inside of manhole
- flow conditions

yes
OK
OK
no flow

Wet Wells

- cover on securely
- condition of cover
- condition of inside of wet well

yes
OK
OK

2. Landfill Cap

Vegetated Soil Cover

- erosion
- bare areas
- washouts
- leachate seeps
- length of vegetation
- dead/dying vegetation

none
none
none
none
tall
none

FORM 1

MONTHLY INSPECTION LOG

PROJECT NAME: Niagara County Refuse Site

LOCATION: Wheatfield, New York

INSPECTOR(S):

RC Becken

DATE: 09/11/08
(MM DD YY)

Item	Inspect For	Action Required	Comments
2. Landfill Cap (continued)			
Access Roads	- bare areas, dead/dying veg.	nd	
	- erosion	none	
	- potholes or puddles	none	
	- obstruction	none	
3. Wetlands (Area "F")	- dead/dying vegetation	none	
	- change in water budget	low water	
	- general condition of wetlands	good	
4. Other Site Systems			
Perimeter Fence	- integrity of fence	found cut in fence	will repair
	- integrity of gates	good	
	- integrity of locks	good	
	- placement and condition of signs	good	

FORM 1

MONTHLY INSPECTION LOG

PROJECT NAME: Niagara County Refuse Site

LOCATION: Wheatfield, New York

INSPECTOR(S):

R C Becker

DATE: 09/11/08
(MM DD YY)

Item

Inspect For

Action Required

Comments

4. Other Site Systems (continued)

Drainage Ditches/
Swale Outlets

- sediment build-up

- erosion

- condition of erosion protection

- flow obstructions

- dead/dying vegetation

- cable concrete/gabion mats and
riprap

none

none

good

none

none

good condition

Culverts

- sediment build-up

- erosion

- condition of erosion protection

- flow obstructions

none

none

good

none

Gas Vents

Wells

- intact / damage

- locks secure

intact

yes

FORM 1

APPENDIX E
MAINTENANCE RECORD LOGS

MAINTENANCE RECORD LOG

PROJECT NAME: Niagara County Refuse Site

LOCATION: Wheatfield, New York

CHIEF MEMBERS: RC Becken

1 Date: 07/11/08 (MM DD YY)

Time: 0930 (HH mm)

Scheduled/Unscheduled: scheduled

Type of Maintenance Performed: remove clean + inspect pumps

2 Company Performing Maintenance

Name: O+m Enterprises Inc.

Address: 7134 Marigold Dr.
North Tonawanda, NY 14120

Contact Name: Rick Becken

3 Methods Used:

pulled pumps cleaned, ~~the~~ checked and reinstalled in wells
Wet Well B + Wet Well D

Description of Material Removed:

none

Problems/Comments:

none

7/11/08
DATE

Richard Becken
INSPECTOR

Richard C. Becken
INSPECTOR'S SIGNATURE

MAINTENANCE RECORD LOG

PROJECT NAME: Niagara County Refuse Site

LOCATION: Wheatfield, New York

CREW MEMBERS: RC Becken

1. Date: 07/10/08 (MM DD YY)

Time: 1100 (HH mm)

Scheduled/Unscheduled: unscheduled

Type of Maintenance Performed: repair fence + gate

2. Company Performing Maintenance

Name: O+M Enterprises Inc.

Address: 7134 Mangold Dr.
North Tonawanda, NY 14120

Contact Name: Rick Becken

3. Methods Used:

Repaired section of fence which had been cut on the west side
of the landfill, replaced lock + chain on the gate on the east side
of the landfill at the end of Warner Ave.

Description of Material Removed:

none

Problems/Comments:

called Niagara County Sheriff's Dept., Deputy Mellenville on site
to make out report. Complaint # 32185

7/10/08 Richard C Becken

DATE

INSPECTOR

Richard C Becken

INSPECTOR'S SIGNATURE

FORM 2

MAINTENANCE RECORD LOG

PROJECT NAME: Niagara County Refuse Site

LOCATION: Wheatfield, New York

CREW MEMBERS: RC Becken

1. Date: 08/31/08 (MM DD YY)

Time: 1100 (HH mm)

Scheduled/Unscheduled: scheduled

Type of Maintenance Performed: mow grass

2. Company Performing Maintenance

Name: O+M Enterprises Inc

Address: 7134 Marigold Dr.
North Tonawanda, NY 14120

Contact Name: Rick Becken

3. Methods Used:

mowed grass around fence perimeter for security reasons;
also mowed pathway to each well to help prevent truck
problems.

Description of Material Removed:

none

Problems/Comments:

heavy grass / heavy rainfall

7/31/08
DATE

Richard Becken
INSPECTOR

Richard C Becken
INSPECTOR'S SIGNATURE

FORM 2

MAINTENANCE RECORD LOG

PROJECT NAME: Niagara County Refuse Site

LOCATION: Wheatfield, New York

CREW MEMBERS: RC Becken

1. Date:

0	8	2	5	0	8
---	---	---	---	---	---

 (MM DD YY)

Time:

1	5	3	0
---	---	---	---

 (HH mm)

Scheduled/Unscheduled:

scheduled

Type of Maintenance Performed: repair section of force main pipe in WWC

2. Company Performing Maintenance

Name: O+m Enterprises

Address: 7134 Margold Dr.

North Tonawanda, NY

Contact Name: Pick Becken

3. Methods Used:

turn off well pump lock out/tag out, remove short section of pipe
that was corroded, replace with new section of pipe

Description of Material Removed:

short section of 2" steel pipe

Problems/Comments:

none

8/25/08

DATE

RC Becken

INSPECTOR

Pick Becken

INSPECTOR'S SIGNATURE

FORM 2

MAINTENANCE RECORD LOG

PROJECT NAME: Niagara County Refuse Site

LOCATION: Wheatfield, New York

CREW MEMBERS: RC Becker

1. Date: 09/06/08 (MM DD YY)

Time: 0930 (HH mm)

Scheduled/Unscheduled: scheduled

Type of Maintenance Performed: mowing grass

2. Company Performing Maintenance

Name: O+M

Address: 7134 Mariopol Dr.
North Tonawanda, NY

Contact Name: Pick Becker

3. Methods Used:

tractor with mower

Description of Material Removed:

none

Problems/Comments:

none

9/6/08

DATE

RC Becker

INSPECTOR

Pick Becker

INSPECTOR'S SIGNATURE

FORM 2

MAINTENANCE RECORD LOG

PROJECT NAME: Niagara County Refuse Site

LOCATION: Wheatfield, New York

CREW MEMBERS:

RC Becken

1. Date: 09/10/08 (MM DD YY)

Time: 0930 (HH mm)

Scheduled/Unscheduled: scheduled

Type of Maintenance Performed: mowing grass

2. Company Performing Maintenance

Name:

OTM

Address:

7134 Manigault Dr.
North Tonawanda, NY

Contact Name:

Pick Becken

3. Methods Used:

tractor with mower

Description of Material Removed:

none

Problems/Comments:

none

9/10/08

DATE

RC Becken

INSPECTOR

Pick Becken

INSPECTOR'S SIGNATURE

FORM 2

MAINTENANCE RECORD LOG

PROJECT NAME: Niagara County Refuse Site

LOCATION: Wheatfield, New York

CREW MEMBERS: RC Becker

1. Date: 09/11/08 (MM DD YY)

Time: 0930 (HH mm)

Scheduled/Unscheduled: scheduled

Type of Maintenance Performed: mowing grass

2. Company Performing Maintenance

Name: O+M

Address: 7134 Menipol Dr.
North Tonawanda, NY

Contact Name: Pick Becker

3. Methods Used:

tractor with mower

Description of Material Removed:

none

Problems/Comments:

none

9/11/08

DATE

RC Becker

INSPECTOR

Pick Becker

INSPECTOR'S SIGNATURE

FORM 2

MAINTENANCE RECORD LOG

PROJECT NAME: Niagara County Refuse Site

LOCATION: Wheatfield, New York

CREW MEMBERS:

PC Becker

1. Date: 09/13/08 (MM DD YY)

Time: 0930 (HH mm)

Scheduled/Unscheduled: scheduled

Type of Maintenance Performed: mowing grass

2. Company Performing Maintenance

Name: O+M

Address: 7134 Mariopol Dr.
North Tonawanda, NY

Contact Name: Pick Becker

3. Methods Used:

tractor with mower

Description of Material Removed:

none

Problems/Comments:

none

9/13/08

DATE

PC Becker

INSPECTOR

Pick Becker

INSPECTOR'S SIGNATURE

FORM 2

MAINTENANCE RECORD LOG

PROJECT NAME: Niagara County Refuse Site

LOCATION: Wheatfield, New York

CREW MEMBERS: RC Becken

1. Date: 09/18/08 (MM DD YY)

Time: 0900 (HH mm)

Scheduled/Unscheduled: unscheduled

Type of Maintenance Performed: repair fence east side of landfill

2. Company Performing Maintenance

Name: D & M Enterprises

Address: 7134 Manigold Dr.

North Tonawanda, NY

Contact Name: Rick Becken

3. Methods Used:

added new section of fence

Description of Material Removed:

none

Problems/Comments:

none

9/18/08
DATE

RC Becken
INSPECTOR

Richard Becken
INSPECTOR'S SIGNATURE

FORM 2

MAINTENANCE RECORD LOG

PROJECT NAME: Niagara County Refuse Site

LOCATION: Wheatfield, New York

CREW MEMBERS: RC Becker

1. Date: 09/18/08 (MM DD YY)

Time: 0900 (HH mm)

Scheduled/Unscheduled: _____

Type of Maintenance Performed: replace security light on south side of control shed

2. Company Performing Maintenance

Name: D&W Enterprises

Address: 7134 Mangold Dr.

North Tonawanda, NY

Contact Name: Rick Becker

3. Methods Used:

removed broken light replaced with new security light

Description of Material Removed:

2x4 light

Problems/Comments:

None

9/18/08
DATE

RC Becker
INSPECTOR

Rick Becker
INSPECTOR'S SIGNATURE

FORM 2

APPENDIX F

COMPACT DISK CONTAINING REPORT