

QUARTERLY DATA SUMMARY REPORT

NIAGARA COUNTY REFUSE DISTRICT SITE

Wheatfield, Niagara County, New York

(NYSDEC Site No. 9-32-026)

SUBMITTED TO:



UNITED STATES
ENVIRONMENTAL PROTECTION
AGENCY



NEW YORK STATE
DEPARTMENT OF
ENVIRONMENTAL CONSERVATION

SUBMITTED FOR:

**NIAGARA COUNTY REFUSE DISTRICT
AND PRP GROUP**

PREPARED BY:

PARSONS

40 La Riviere Drive, Suite 350
Buffalo, New York 14202
(716) 541-0730 Fax (716) 541-0760

November 2010

PARSONS

QUARTERLY DATA SUMMARY REPORT

NIAGARA COUNTY REFUSE DISTRICT SITE Wheatfield, Niagara County, New York (NYSDEC Site No. 9-32-026)

Prepared For:

NIAGARA COUNTY REFUSE DISTRICT AND PRP GROUP

Prepared By:

PARSONS
40 La Riviere Drive, Suite 350
Buffalo, New York 14202
(716) 541-0730 Fax (716) 541-0760

November 2010

TABLE OF CONTENTS

Page No.

SECTION 1 INTRODUCTION..... 1-1

- 1.1 Procedures 1-1
 - 1.1.1 Effluent Sampling..... 1-1
 - 1.1.2 Groundwater Sampling..... 1-1
 - 1.1.3 Water Level Measurements..... 1-1
 - 1.1.4 Site Inspections..... 1-2

SECTION 2 RESULTS 2-1

- 2.1 Effluent Samples 2-1
- 2.2 Groundwater Analytical Results 2-1
- 2.3 Water Levels..... 2-1
- 2.4 Site Inspections..... 2-2
- 2.5 Maintenance 2-2
- 2.6 OM&M Oversight 2-2

SECTION 3 SUMMARY AND CONCLUSIONS 3-1

SECTION 4 REFERENCES..... 4-1

APPENDIX A CITY OF NORTH TONAWANDA INDUSTRIAL WASTEWATER DISCHARGE PERMIT AND CHAIN-OF-CUSTODY

APPENDIX B CORRESPONDENCE

APPENDIX C WATER LEVEL RECORDS

APPENDIX D MONTHLY INSPECTION LOGS

APPENDIX E MAINTENANCE RECORD LOGS

APPENDIX F COMPACT DISK CONTAINING REPORT

TABLE OF CONTENTS	
	<u>Page No.</u>

LIST OF TABLES

Table 2.1 Quarterly Site Inspection Results Summary 2-4

LIST OF FIGURES

Figure 1.1 Site Plan..... 1-3

SECTION 1

INTRODUCTION

The Niagara County Refuse Site Potentially Responsible Parties (PRP) Group completed a remedial action at the Niagara County Refuse Site (Site), Wheatfield, New York in 2000. The remedial action was conducted in accordance with the United States Environmental Protection Agency (USEPA) Record of Decision (USEPA, 1993) and the United States District Court Consent Decree (USEPA, 1995). The PRP Group is currently performing operations, maintenance, and monitoring (OM&M) in accordance with the USEPA-approved OM&M Manual (CRA, 2000). This data report summarizes the third quarter monitoring activities conducted from July through September 2010.

1.1 PROCEDURES

1.1.1 Effluent Sampling

The current Industrial Wastewater Discharge Permit (Appendix A) was issued by the City of North Tonawanda, and is effective from March 31, 2010 through April 1, 2013. The current permit has a reduced analytical parameter list compared to the original permit, and a semi-annual sampling frequency. Prior to March 2007, samples were collected monthly. In 2010, effluent samples were collected on March 5 and September 9, 2010 from Wet Well A, which receives water from the leachate collection system surrounding the landfill. Composite 24-hour samples were collected from Wet Well A using an automated sampler. The next effluent sample is scheduled to be collected in March 2011.

1.1.2 Groundwater Sampling

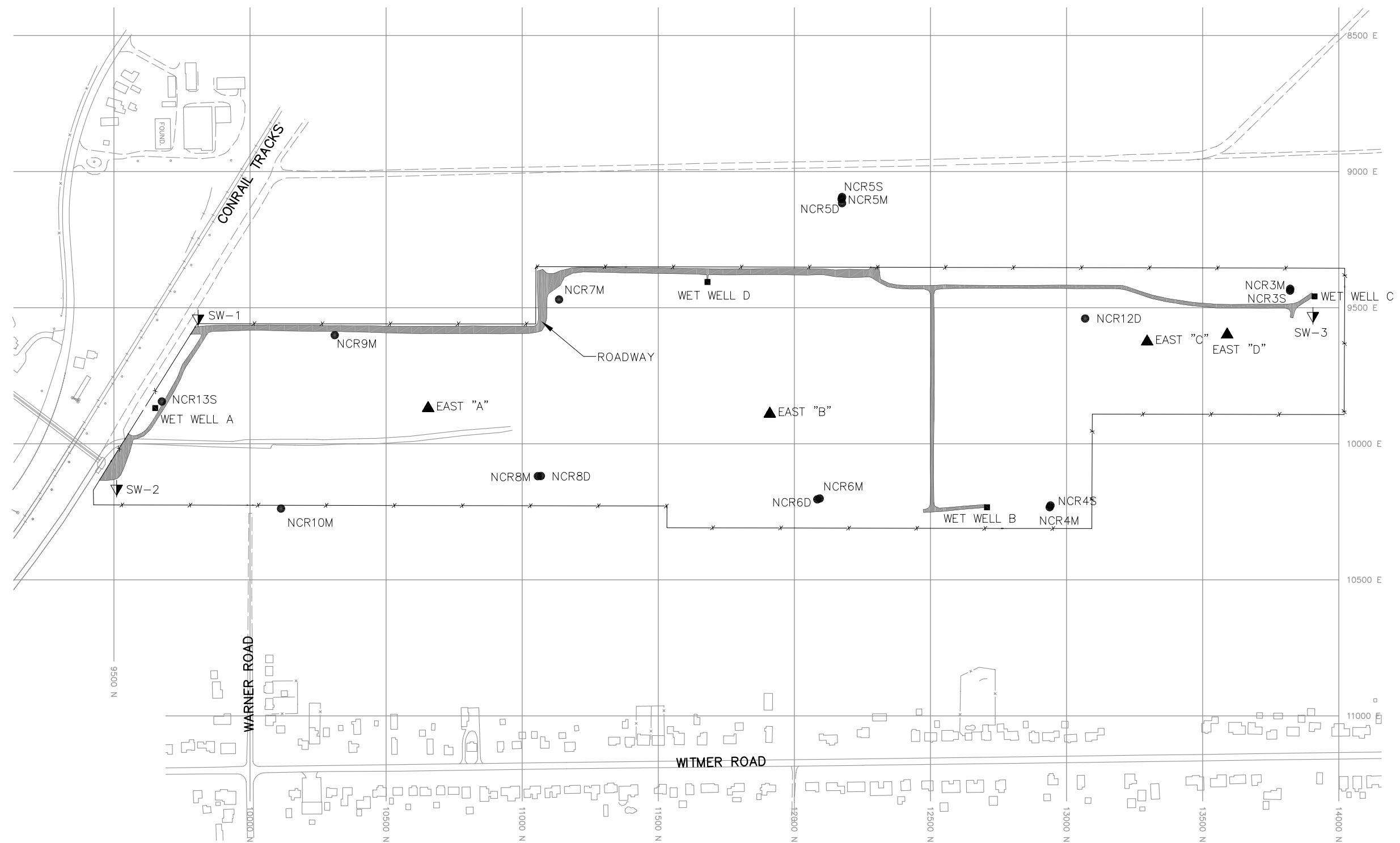
Groundwater samples were not collected during this reporting period. In accordance with the approved OM&M Plan (CRA, 2000), the groundwater sampling frequency was decreased from a quarterly to a semi-annual basis in 2003, and from a semi-annual to an annual basis beginning in 2006. The next round of groundwater samples is scheduled to be collected in November 2010.

1.1.3 Water Level Measurements

Water levels were measured during monthly Site inspections in July, August, and September 2010. Water levels were measured from four observation well locations (Piezometers East A, East B, East C, and East D), four effluent monitoring locations (Wet Wells A, B, C, and D), and four monitoring well locations (NCR-3S, NCR-4S, NCR-5S, and NCR-13S). The water levels were measured with an electronic water level indicator, and reported as an elevation above mean sea level. Figure 1.1 shows the locations of the water level monitoring points.

1.1.4 Site Inspections

Monthly Site inspections were conducted on July 2, August 12, and September 16, 2010. During the Site inspections, the manholes, wet wells, landfill cap, wetlands, perimeter fence, drainage ditches, swale outlets, culverts, gas vents, and monitoring wells were each visually inspected.



LEGEND

- | | |
|--------------|---|
| ▲ EAST "A" | WATER LEVEL MONITORING WELL LOCATION |
| ▼ SW-2 | SURFACE WATER MONITORING LOCATION |
| ■ WET WELL A | EFFLUENT MONITORING LOCATION |
| ● NCR13S | GROUNDWATER QUALITY MONITORING LOCATION |

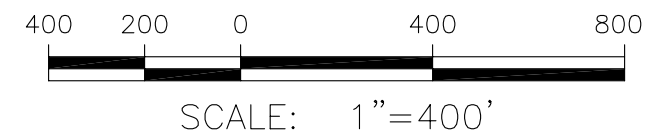


FIGURE 1.1

NIAGARA COUNTY REFUSE SITE
WHEATFIELD, NEW YORK
SITE PLAN

PARSONS

180 LAWRENCE BELL DRIVE, SUITE 104, WILLIAMSVILLE, N.Y. 14221, PHONE: 716-633-7074

SECTION 2

RESULTS

This section describes the results of the third quarter OM&M activities conducted from July through September 2010. Activities during this quarter included water level measurements, effluent sampling, mowing the landfill cap, mowing around wells and the perimeter fence, repairs to Wet Well A, and Site inspections.

2.1 EFFLUENT SAMPLES

One effluent sample was collected during the reporting period (September 9, 2010). The effluent sample was collected by O&M Enterprises, and analyzed by the City of North Tonawanda. The analytical results are used by the City to confirm that the effluent received from the Site meets the criteria for acceptance by the City treatment system. These data are not presented in the quarterly monitoring reports, but will be summarized in the 2010 annual monitoring report. The current City of North Tonawanda Industrial Wastewater Discharge Permit (March 31, 2010 through April 1, 2013) and chain-of-custody for the September 2010 sampling event have been included in Appendix A. As shown in the current permit, the analytical parameters and the sampling frequency have been reduced from the original permit. The next effluent sample is scheduled to be collected in March 2011.

2.2 GROUNDWATER ANALYTICAL RESULTS

Monitoring wells NCR-3S, NCR-4S, NCR-5S, and NCR-13S were not sampled during this reporting quarter, based on the current annual groundwater sampling schedule specified in the OM&M Manual. Groundwater sample collection is planned for November 2010, assuming groundwater levels are adequate. The locations of the monitoring wells are provided in Figure 1.1. In November 2005, the USEPA, NYSDOH, and NYSDEC agreed to reduce the number of analytical parameters monitored in the groundwater samples (see Appendix B).

2.3 WATER LEVELS

Results of water level measurements collected during this reporting period are presented in Appendix C. Water levels were collected from the monitoring locations on July 2, August 12, and September 16, 2010. Water levels in the monitoring wells were low over the reporting quarter. Because of the low water levels, two of the four monitoring wells were dry when measured in July, and all four of the wells were dry in August and September when measured. Water levels appear to be lower than levels observed in previous years between July and September, based on a greater number of dry measurements.

2.4 SITE INSPECTIONS

A summary of the Site inspection findings is included in Table 2.1. Copies of the Site Inspection Logs have been included in Appendix D.

Each of the inspections found the manholes and wet wells to be in good condition. Water levels were measured in the wet wells during the inspections and recorded on the water level records.

Examination of the landfill cap vegetative cover included checking for erosion, bare areas, wash-outs, leachate seeps, height of vegetation, and assessing the condition of the vegetation. No surface erosion or leachate seeps were noted. The grass covering the landfill was noted as tall during the July and August inspections and short during the September inspection, which occurred after the cap was mowed.

Additionally, the access roads were examined for erosion, potholes/puddles, and obstructions. All aspects of the access roads that were examined were deemed acceptable.

The wetlands were visually examined to assess the condition of the vegetation, change in water levels, and to observe general conditions. Wetland vegetation was noted to be in a good condition during each of the inspections. A slightly lower than normal water level for the time of year was noted in the wetland area during each of the site inspections; however, the general condition of the wetland was noted as good and water levels were within the historical range.

All other parts of the landfill system which were examined, including the drainage ditches, swale outlets, culverts, and gas vents, were found to be in acceptable condition during the reporting period.

2.5 MAINTENANCE

Scheduled maintenance during the reporting period included mowing walking paths to the monitoring and observation wells on August 12. Additionally, the landfill was mowed between September 3 and 18. Copies of the Maintenance Record Logs have been included in Appendix E.

Unscheduled maintenance during the reporting period included repairing Wet Well A. This required replacement of a leaking hose, and re-setting the auto-dialer on July 16.

No major repairs were required during the reporting period.

2.6 OM&M OVERSIGHT

Parsons' Quality Assurance (QA) work included periodic oversight of OM&M activities by O&M Enterprises, Inc., review of monthly inspection and monitoring data,

and periodic communications with O&M Enterprises. Upon completion of work performed by O&M Enterprises, routine activity report forms were completed. Parsons reviewed the report forms for completeness, and recorded problems, if any, on the forms (Appendices C, D, and E).

Table 2.1
Quarterly Site Inspection Results Summary

Inspection Item	Acceptable	Requires Action	Comments
Manholes	X		
Wet Wells	X		Water levels were measured monthly.
Wetlands	X		Water level was noted to be low during the monthly inspections. Water levels were within the historical range. Overall observed wetland conditions were good.
Perimeter Fence	X		No damage was observed during the quarter.
Condition of Roads	X		No potholes were observed.
Integrity of the Cap	X		No erosion was observed. Tall vegetation was noted in July and August, whereas the vegetation was short in September, after the site was mowed.
Drainage Ditches/Swales	X		
Gas Venting System	X		
Wells	X		Water levels were measured monthly.
Culverts	X		
Other	X		No issues were identified during the reporting period with any other aspects of the site.

SECTION 3

SUMMARY AND CONCLUSIONS

The following summary and conclusions were developed based on the data collected during this reporting period:

- The landfill was inspected monthly and was appropriately maintained. No major repairs were required during the reporting period. Typically, repairs are made as necessary following identification of problems or maintenance needs.
- As specified in the OM&M Manual, annual groundwater monitoring commenced in 2006. Groundwater samples are currently scheduled to be collected in November 2010, assuming sufficient groundwater is available in the wells.
- Water levels were measured in the wet wells, monitoring wells, and the observation wells on the landfill on a monthly basis. Water levels in the monitoring wells were low over the reporting quarter. As a result, two of the four monitoring wells were dry when measured in July, and all four of the wells were dry when measured in August and September. Water levels appeared to be lower than levels observed in previous years between July and September based on a greater number of dry measurements.
- Wetlands vegetation was in good condition during the inspections. The wetlands vegetation will continue to be visually assessed during the monthly site inspections.

SECTION 4

REFERENCES

Record of Decision, Niagara County Refuse Site, Wheatfield, Niagara County, New York; United States Environmental Protection Agency, September 1993.

Consent Decree, Docket 946-849; United States Environmental Protection Agency, February 3, 1995.

Operations, Maintenance and Monitoring Manual for Niagara County Refuse District Site Remedial Construction, Wheatfield, Niagara County, New York; Conestoga-Rovers & Associates, December 2000.

APPENDIX A

CITY OF NORTH TONAWANDA INDUSTRIAL WASTEWATER DISCHARGE PERMIT AND CHAIN-OF-CUSTODY

CITY OF NORTH TONAWANDA
6/27/00
INDUSTRIAL WASTEWATER DISCHARGE PERMIT

Permit Number: 2628010

In accordance with the provisions of the Clean Water Act as amended, all terms and conditions set forth in this permit, the City of North Tonawanda Local Sewer Use Ordinance and any applicable Federal, State or local laws or regulations, authorization is hereby granted to: Niagara County Department of Public Works

Engineering Department

59 Park Avenue

Lockport, New York 14094

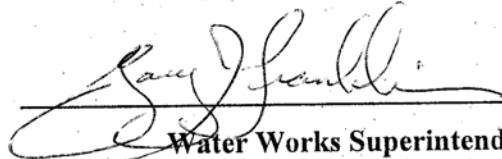
Classified by S.I.C. Number(s): N/A

for the discharge of: groundwater and other wastes generated during Remedial Action construction and implementation into the City of North Tonawanda Sewerage System.

This permit is granted in accordance with an application filed in the offices of the Wastewater Treatment Plant Superintendent located at 830 River Road, and in conformity with specifications and other required data submitted in support of the above named application, all of which are filed with and considered part of this permit. This permit is also granted in accordance with discharge limitations and requirements, monitoring and reporting requirements, and all other conditions set forth in Parts I and II hereof.

Effective this 31st day of March, 2010

To expire the 1st day of April, 2013



Water Works Superintendent

Signed this 16 day of June 2010

PART I. SPECIFIC CONDITIONS
A. DISCHARGE LIMITATIONS AND MONITORING REQUIREMENTS

During the period beginning the effective date of this permit and lasting until the expiration date, discharge from the permitted facility outfall(s) shall be limited and monitored by the permittee as specified below (Refer to attached map for sampling and monitoring sites).

Sample Point	Parameter	Discharge Limitations mg/l except pH Daily Max.	Sampling Period	Sampling Type
001	Total Flow		1 Sampling Day Monthly	continuous
2/	Aluminum	2.0	1 Sample Day semi-annual	24 hr comp.
	Lead	4.6	1 Sampling Day semi-annual	24 hr comp.
	Iron	10	1 Sampling Day semi-annual	24 hr comp.
2/	Magnesium	Monitor Only	1 Sampling Day semi-annual	24 hr comp.
2/	Sodium	Monitor Only	1 Sampling Day semi-annual	24 hr comp.
	pH	Monitor Only	1 Sampling Day semi-annual	grab
2/	BOD	Monitor Only	1 Sampling Day semi-annual	24 hr comp.
2/	Total Suspended Solids	Monitor Only	1 Sampling Day semi-annual	24 hr comp.

PART I. SPECIFIC CONDITIONS

B. DISCHARGE REPORTING REQUIREMENTS

During the period beginning the effective date of this permit and lasting until the expiration date, discharge monitoring results shall be summarized and reported by the permittee on the no later than the days specified below.

[illegible]

PART I. SPECIFIC CONDITIONS

C. SPECIAL REQUIREMENTS

- 1) This permit is written for a duration of three years. Upon renewal of this permit, all parameters will be re-evaluated to develop a parameter list based on chemical concentrations present in the extracted groundwater.
- 2) Frequency of monitoring is to be re-evaluated yearly..
- 3) All monitoring reports (initial and subsequent), are to be received by the Superintendent, no later than thirty (30) days after receipt of validated data.
- 4) It is required that the Permittee have a Site Operations Manual available at all times. All emergency phone numbers must be listed in an appropriate place for easy access by operations personnel. The permittee shall not discharge to the City of North Tonawanda sewerage treatment works during overflow conditions. The permittee is required to cease all pumping operations upon verbal request of the North Tonawanda Wastewater Treatment Plant Superintendent or his assigns. Pumping operations shall not recommence until approved by the North Tonawanda Wastewater Treatment Plant Superintendent or his assigns.
- 5) Analysts are required to use GC/MS method detection limits for most organics (if GC/MS is appropriate); GC/ECD for PCBS/Pesticides and GF method detection limits for metals (where GF is appropriate), as contained in attachment 5 of the NYSDEC TOGs 1.3.8 - New Discharges to Publicly Owned Treatment Works - dated 10/26/94.

CITY OF NORTH TONAWANDA WATER WORKS
WASTEWATER DEPARTMENT
830 RIVER ROAD
NORTH TONAWANDA, NEW YORK 14120
PHONE: (716) 695 - 8560
FAX: (716) 695 - 8563

Gary Franklin
Acting Superintendent

John C. Maurer
Maintenance Supervisor



David A. Scott
Chief Operator

William M. Davignon
Lab Director/Chemist

CHAIN OF CUSTODY
Sampling Record
NIAGARA COUNTY REFUSE SITE

DATE: September 9 & 10, 2010

SAMPLES SIGNATURE Richard C Beck SITE NAME: NIAGARA COUNTY REFUSE SITE

SPL #	SAMPLE NAME	DATE	TIME	SAMPLE LOCATION	SAMPLE TYPE	#OF BTLS
01	9/10 RCB EFF	9/9/10	0730	Wet Well A	volatiles	2
02	9/10 RCB EFF	9/9/10	1700	" " "	"	2
03	9/10 RCB EFF	9/10/10	0730	" " "	"	2
04	9/10 RCB EFF	9/10/10	0730	" " "	wet chemistry	1

FLows: FINAL METER READING 51210671
INITIAL METER READING 51209510
MONTHLY FLOW 1161

RELINQUISHED BY: Richard C Beck

RECEIVED BY: Wm J. H.

DATE 9/10/10

TIME 7:30 am

APPENDIX B

CORRESPONDENCE



UNITED STATES ENVIRONMENTAL PROTECTION AGENCY
REGION 2
290 BROADWAY
NEW YORK, NY 10007-1866

NOV 21 2005

BY FEDEX

Mr. Eric Felter
Project Manager
Parsons
180 Lawrence Bell Drive, Suite 104
Williamsville, New York 14221

Re: Niagara County Refuse Site, Wheatfield, New York; Request for the Reduction of Analytical Parameters in Groundwater Samples

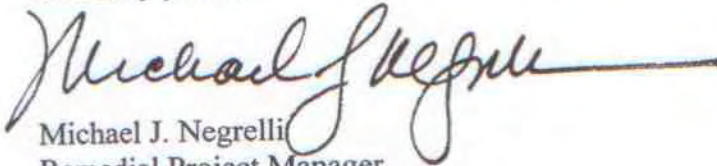
Dear Mr. Felter:

The U.S. Environmental Protection Agency (EPA) and New York State Department of Environmental Conservation (NYSDEC) have reviewed your letter dated October 3, 2005 prepared by Parsons on behalf of the Niagara County Refuse (NCR) Site PRP Group requesting a reduction in the analytical parameters in groundwater samples taken at the NCR site as part of the operation and maintenance program. The current analytical parameter list includes 2 volatiles, 4 semi-volatiles, and 16 metals which were determined to be constituents of interest at the site. Your proposal requests reducing the parameters to 5 metals, representing those constituents which have been measured above standards with some regularity in past sampling rounds. The sampling program, involving four monitoring wells, has been in effect since 2001 and your proposal reflects trends evident since the program was initiated. Sampling frequency is currently semi-annual (twice a year).

After discussing this matter with NYSDEC with input from the New York State Department of Health, our preference is that the sampling parameters remain the same for the time being. This is due to the significant residential growth around the site in recent years. After the current sampling round, samples are scheduled to be taken annually. EPA approves changing the current monitoring program only to the extent that the volatiles and semi-volatiles analysis can be conducted every two years while the metals analysis be conducted annually. EPA will, however, consider a further frequency reduction in the future as more data are collected.

Please call me at (212) 637-4278 if you have any questions on this matter.

Sincerely yours,

A handwritten signature in dark ink, appearing to read "Michael J. Negrelli", with a long horizontal flourish extending to the right.

Michael J. Negrelli
Remedial Project Manager
New York Remediation Branch

cc: J. Konsella - NYSDEC/Region 9
B. Sadowski - NYSDEC/Region 9

APPENDIX C

WATER LEVEL RECORDS

WATER LEVEL RECORD

PROJECT NAME: *NIAGARA COUNTY
REFUSE SITE*

LOCATION: *Wheatfield, New York*

DATE:

0	7	0	2	1	0
---	---	---	---	---	---

(MM D D Y Y)

CREW MEMBERS: RC Becken

Observation Well	Time of Measurement	Top of Casing Elevation A	Depth to Water B	Water Level Elevation A-B
		feet	feet	feet
EAST "A"	12:55	598.93	25.78	5 7 3 . 1 5
EAST "B"	12:15	596.23	19.99	5 7 6 . 2 4
EAST "C"	12:00	598.69	20.65	5 7 8 . 0 4
EAST "D"	11:40	593.20	15.7	5 7 7 . 5 0
NCR-3S	10:35	579.60	dry	0 0 0 . 0 0
NCR-4S	10:55	591.88	dry	0 0 0 . 0 0
NCR-5S	11:15	597.34	9.11	5 8 8 . 2 3
NCR-13S	9:35	593.13	7.4	5 8 5 . 7 3

WET WELLS

Wet Well	Time of Measurement	Total Flow	Depth of Water
WW A	9:20		~8"
WW B	10:25		~5"
WW C	10:15		~8"
WW D	10:05		~6"

Total System Flow	Time of Measurement
51132030	9:20

FP-3D

WATER LEVEL RECORD

PROJECT NAME: NIAGARA COUNTY
REFUSE SITE

LOCATION: Wheatfield, New York

DATE:

0	8	1	2	1	0
(M	M	D	D	Y	Y)

CREW MEMBERS: RC Becken

Observation Well	Time of Measurement	Top of Casing Elevation A	Depth to Water B	Water Level Elevation A-B
		feet	feet	feet
EAST "A"	12:55	598.93	25.74	5 7 3 . 1 9
EAST "B"	12:15	596.23	19.84	5 7 6 . 3 9
EAST "C"	12:00	598.69	20.22	5 7 8 . 4 7
EAST "D"	11:40	593.20	15.65	5 7 7 . 5 5
NCR-3S	10:40	579.60	dry	0 0 0 . 0 0
NCR-4S	11:00	591.88	dry	0 0 0 . 0 0
NCR-5S	9:25	597.34	dry	0 0 0 . 0 0
NCR-13S	9:35	593.13	dry	0 0 0 . 0 0

WET WELLS

Wet Well	Time of Measurement	Total Flow	Depth of Water
WW A	9:30		~9"
WW B	10:55		~6"
WW C	10:35		~7"
WW D	10:15		~6"

Total System Flow	Time of Measurement
51184891	9:30

FP-3D

WATER LEVEL RECORD

PROJECT NAME: NIAGARA COUNTY
REFUSE SITE

LOCATION: Wheatfield, New York

DATE:

0	9	1	6	1	0
(M M D D Y Y)					

CREW MEMBERS: RC Becken

Observation Well	Time of Measurement	Top of Casing Elevation A	Depth to Water B	Water Level Elevation A-B
		feet	feet	feet
EAST "A"	12:55	598.93	25.78	5 7 3 . 1 5
EAST "B"	12:15	596.23	19.87	5 7 6 . 3 6
EAST "C"	12:00	598.69	20.19	5 7 8 . 5 0
EAST "D"	11:40	593.20	15.65	5 7 7 . 5 5
NCR-3S	10:40	579.60	dry	0 0 0 . 0 0
NCR-4S	11:00	591.88	dry	0 0 0 . 0 0
NCR-5S	12:05	597.34	dry	0 0 0 . 0 0
NCR-13S	9:35	593.13	dry	0 0 0 . 0 0

WET WELLS

Wet Well	Time of Measurement	Total Flow	Depth of Water
WW A	10:30		~8"
WW B	10:55		~6"
WW C	10:35		~7"
WW D	10:15		~6"

Total System Flow	Time of Measurement
51215670	10:30

FP-3D

APPENDIX D

MONTHLY INSPECTION LOGS

MONTHLY INSPECTION LOG

PROJECT NAME: Niagara County Refuse Site LOCATION: Wheatfield, New York

DATE: 06/10/21/01
(MM DD YY)

INSPECTOR(S): Richard C. Baker

Comments

Action Required

Item

Inspect For

1. Perimeter Collection System/Off-Site Foremain

--	--	--	--

Manholes

- cover on securely
- condition of cover
- condition of inside of manhole
- flow conditions

yes
good
good
good

--	--	--	--

Wet Wells

- cover on securely
- condition of cover
- condition of inside of wet well

yes
good
good

2. Landfill Cap

--	--	--	--	--	--

Vegetated Soil Cover

- erosion
- bare areas
- washouts
- leachate seeps
- length of vegetation
- dead/dying vegetation

none
none
none
none
tall
none

FORM 1

MONTHLY INSPECTION LOG

PROJECT NAME: Niagara County Refuse Site

LOCATION: Wheatfield, New York

DATE: 07/02/19
(MM DD YY)

INSPECTOR(S):

Richard C. Becker

Item	Inspect For	Action Required	Comments
2. Landfill Cap (continued)			
<div>Access Roads</div>	- bare areas, dead/dying veg.	<i>none</i>	
	- erosion	<i>none</i>	
	- potholes or puddles	<i>none</i>	
	- obstruction	<i>none</i>	
3. Wetlands (Area "F")	- dead/dying vegetation	<i>none</i>	
	- change in water budget	<i>low</i>	
	- general condition of wetlands	<i>good</i>	
4. Other Site Systems			
<div>Perimeter Fence</div>	- integrity of fence	<i>good</i>	
	- integrity of gates	<i>good</i>	
	- integrity of locks	<i>good</i>	
	- placement and condition of signs	<i>good</i>	

MONTHLY INSPECTION LOG

PROJECT NAME: Niagara County Refuse Site

LOCATION: Wheatfield, New York

INSPECTOR(S):

Richard C. Baker

DATE: 07/02/16
(MM DD YY)

Comments

Action Required

Inspect For

Item

4. Other Site Systems (continued)

- Drainage Ditches / Swale Outlets
 - sediment build-up
 - erosion
 - condition of erosion protection
 - flow obstructions
 - dead/dying vegetation
 - cable concrete/gabion mats and riprap

none
none
good
none
none
good

- Culverts
 - sediment build-up
 - erosion
 - condition of erosion protection
 - flow obstructions

none
none
good
none

- Gas Vents
 - intact / damage
- Wells
 - locks secure

intact
yes

FORM 1

MONTHLY INSPECTION LOG

PROJECT NAME: Niagara County Refuse Site

LOCATION: Wheatfield, New York

DATE: 08/12/19
(MM DD YY)

INSPECTOR(S): RC Becker

Item	Inspect For	Action Required	Comments
1. Perimeter Collection System/Off-Site Foremain			
Manholes	- cover on securely	yes	
	- condition of cover	good	
	- condition of inside of manhole	good	
	- flow conditions	no flow	
Wet Wells	- cover on securely	yes	
	- condition of cover	good	
	- condition of inside of wet well	good	
2. Landfill Cap			
Vegetated Soil Cover	- erosion	none	
	- bare areas	none	
	- washouts	none	
	- leachate seeps	none	
	- length of vegetation	full	
	- dead/dying vegetation	no	

FORM 1

MONTHLY INSPECTION LOG

PROJECT NAME: Niagara County Refuse Site

LOCATION: Wheatfield, New York

INSPECTOR(S):

R. C. Belknap

DATE: 08/21/09
(MM DD YY)

Item	Inspect For	Action Required	Comments
2. Landfill Cap (continued)			
Access Roads	- bare areas, dead/dying veg.	<i>no</i>	
	- erosion	<i>none</i>	
	- potholes or puddles	<i>none</i>	
	- obstruction	<i>none</i>	
3. Wetlands (Area "F")			
	- dead/dying vegetation	<i>no</i>	
	- change in water budget	<i>low</i>	
	- general condition of wetlands	<i>good</i>	
4. Other Site Systems			
Perimeter Fence			
	- integrity of fence	<i>good</i>	
	- integrity of gates	<i>good</i>	
	- integrity of locks	<i>good</i>	
	- placement and condition of signs	<i>good</i>	

MONTHLY INSPECTION LOG

PROJECT NAME: Niagara County Refuse Site LOCATION: Wheatfield, New York

DATE: 08/12/19
(MM DD YY)

INSPECTOR(S): RC Becker

Comments

Action Required

Item

Inspect For

4. Other Site Systems (continued)

Drainage Ditches / Swale Outlets

- sediment build-up
- erosion
- condition of erosion protection
- flow obstructions
- dead/dying vegetation
- cable concrete/gabion mats and riprap

none
none
good
none
none
good condition

Culverts

- sediment build-up
- erosion
- condition of erosion protection
- flow obstructions

none
none
good
none

Gas Vents

- intact / damage

intact

Wells

- locks secure

yes

FORM 1

MONTHLY INSPECTION LOG

PROJECT NAME: Niagara County Refuse Site LOCATION: Wheatfield, New York

DATE: 09/16/10
(MM DD YY)

INSPECTOR(S): RC Becker

Comments

Action Required

1. Perimeter Collection System/Off-Site Forcemain

--	--	--	--

Manholes

- cover on securely
- condition of cover
- condition of inside of manhole
- flow conditions

yes
good
good
no flow

--	--	--	--

Wet Wells

- cover on securely
- condition of cover
- condition of inside of wet well

yes
good
good

2. Landfill Cap

--	--	--	--	--	--

Vegetated Soil Cover

- erosion
- bare areas
- washouts
- leachate seeps
- length of vegetation
- dead/dying vegetation

none
none
none
none
short
none

FORM 1

MONTHLY INSPECTION LOG

PROJECT NAME: Niagara County Refuse Site

LOCATION: Wheatfield, New York

INSPECTOR(S):

Rc Becker

DATE: 10/9/11
(MM DD YY)

Item	Inspect For	Action Required	Comments
2. Landfill Cap (continued)			
Access Roads	- bare areas, dead/dying veg.	<i>none</i>	
	- erosion	<i>none</i>	
	- potholes or puddles	<i>none</i>	
	- obstruction	<i>none</i>	
3. Wetlands (Area "F")	- dead/dying vegetation	<i>none</i>	
	- change in water budget	<i>low</i>	
	- general condition of wetlands	<i>good</i>	
4. Other Site Systems			
Perimeter Fence	- integrity of fence	<i>good</i>	
	- integrity of gates	<i>good</i>	
	- integrity of locks	<i>good</i>	
	- placement and condition of signs	<i>good</i>	

FORM 1

MONTHLY INSPECTION LOG

PROJECT NAME: Niagara County Refuse Site

LOCATION: Wheatfield, New York

INSPECTOR(S): RC Becker

DATE: 10/9/18/19
(MM DD YY)

Item	Inspect For	Action Required	Comments
4. <input type="checkbox"/>	Other Site Systems (continued)		
<input type="checkbox"/>	Drainage Ditches/ Swale Outlets		
<input type="checkbox"/>	- sediment build-up	<u>none</u>	
<input type="checkbox"/>	- erosion	<u>none</u>	
<input type="checkbox"/>	- condition of erosion protection	<u>good</u>	
<input type="checkbox"/>	- flow obstructions	<u>none</u>	
<input type="checkbox"/>	- dead/dying vegetation	<u>none</u>	
<input type="checkbox"/>	- cable concrete/gabion mats and riprap	<u>good</u>	
<input type="checkbox"/>			
<input type="checkbox"/>	Culverts		
<input type="checkbox"/>	- sediment build-up	<u>none</u>	
<input type="checkbox"/>	- erosion	<u>none</u>	
<input type="checkbox"/>	- condition of erosion protection	<u>good</u>	
<input type="checkbox"/>	- flow obstructions	<u>none</u>	
<input type="checkbox"/>			
<input type="checkbox"/>	Gas Vents		
<input type="checkbox"/>	- intact /damage	<u>intact</u>	
<input type="checkbox"/>	Wells		
<input type="checkbox"/>	- locks secure	<u>yes</u>	

FORM 1

APPENDIX E

MAINTENANCE RECORD LOGS

MAINTENANCE RECORD LOG

PROJECT NAME: Niagara County Refuse Site

LOCATION: Wheatfield, New York

CREW MEMBERS: Richard C. Becken

1. Date: 07/16/10 (MM DD YY)

Time: 0945 (HH mm)

Scheduled/Unscheduled: unscheduled

Type of Maintenance Performed: cvt lock, repair wet well A, repair autodailer

2. Company Performing Maintenance

Name: O&M Enterprises, Inc.

Address: 7134 Marigold Drive
North Tonawanda, NY 14120

Contact Name: Richard C. Becken

3. Methods Used:

remove unknown lock from front gate, repair wet well A hose which was corroded
reboot autodailer which had locked up

Description of Material Removed:

none

Problems/Comments:

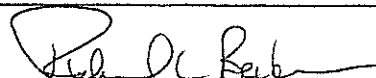
none

7/16/10

DATE

Richard C. Becken

INSPECTOR



INSPECTOR'S SIGNATURE

FORM 2

MAINTENANCE RECORD LOG

PROJECT NAME: Niagara County Refuse Site

LOCATION: Wheatfield, New York

CREW MEMBERS:

RC Becker

1. Date: 081210 (MM DD YY)

Time: 1200 (HH mm)

Scheduled/Unscheduled: scheduled

Type of Maintenance Performed: weed whacked around monitoring wells pump wells and control sheet

2. Company Performing Maintenance

Name: D+M Enterprises, Inc.

Address: 7134 Manigault Dr.

North Tonawanda, NY 14120

Contact Name: Rick Becker

3. Methods Used:

weed whacked around wells + control sheet

Description of Material Removed:

none

Problems/Comments:

none

8/12/10

DATE

Richard C Becker

INSPECTOR

RC Becker

INSPECTOR'S SIGNATURE

FORM 2

MAINTENANCE RECORD LOG

PROJECT NAME: Niagara County Refuse Site

LOCATION: Wheatfield, New York

CREW MEMBERS: RC Becker

1. Date: 09/03/10 (MM DD YY)

Time: 0900 (HH mm)

Scheduled/Unscheduled: scheduled

Type of Maintenance Performed: mowed grass

2. Company Performing Maintenance

Name: O+M Enterprises

Address: 7134 Marigold Dr.
North Tonawanda, NY 14120

Contact Name: Rick Becker

3. Methods Used:

tractor mounted mower

Description of Material Removed:

none

Problems/Comments:

none

9/3/10
DATE

Richard C Becker
INSPECTOR

Richard C Becker
INSPECTOR'S SIGNATURE

FORM 2

MAINTENANCE RECORD LOG

PROJECT NAME: Niagara County Refuse Site

LOCATION: Wheatfield, New York

CREW MEMBERS:

RC Becker

1. Date: 09/17/10 (MM DD YY)

Time: 0830 (HH mm)

Scheduled/Unscheduled: scheduled

Type of Maintenance Performed: mowing landfill

2. Company Performing Maintenance

Name: O+M Enterprises, Inc.

Address: 7134 Margold Dr.
North Tonawanda, NY 14120

Contact Name: Richard Becker

3. Methods Used:

tractor + mower

Description of Material Removed:

none

Problems/Comments:

none

9/17/10

DATE

Richard C Becker

INSPECTOR

Richard C Becker

INSPECTOR'S SIGNATURE

FORM 2

MAINTENANCE RECORD LOG

PROJECT NAME: Niagara County Refuse Site

LOCATION: Wheatfield, New York

CREW MEMBERS:

RC Becker

1. Date:

0	9	1	8	1	0
---	---	---	---	---	---

 (MM DD YY)

Time:

0	8	0	0
---	---	---	---

 (HH mm)

Scheduled/Unscheduled: scheduled

Type of Maintenance Performed: mow grass

2. Company Performing Maintenance

Name: O+M

Address: 7134 Marigold Dr.
N. Tonawanda, NY 14120

Contact Name: Rick Becker

3. Methods Used:

tractor mounted mower

Description of Material Removed:

none

Problems/Comments:

none

9/18/10

DATE

Richard C Becker

INSPECTOR

Richard C Becker

INSPECTOR'S SIGNATURE

FORM 2