

QUARTERLY DATA SUMMARY REPORT THIRD QUARTER 2012

NIAGARA COUNTY REFUSE DISTRICT SITE

Wheatfield, Niagara County, New York

(NYSDEC Site No. 9-32-026)

SUBMITTED TO:



UNITED STATES
ENVIRONMENTAL PROTECTION
AGENCY



NEW YORK STATE
DEPARTMENT OF
ENVIRONMENTAL CONSERVATION

SUBMITTED FOR:

**NIAGARA COUNTY REFUSE DISTRICT
AND PRP GROUP**

PREPARED BY:

PARSONS

40 La Riviere Drive, Suite 350
Buffalo, New York 14202
(716) 541-0730 Fax (716) 541-0760

November 2012

QUARTERLY DATA SUMMARY REPORT THIRD QUARTER 2012

NIAGARA COUNTY REFUSE DISTRICT SITE Wheatfield, Niagara County, New York (NYSDEC Site No. 9-32-026)

Prepared For:

NIAGARA COUNTY REFUSE DISTRICT AND PRP GROUP

Prepared By:

PARSONS

40 La Riviere Drive, Suite 350
Buffalo, New York 14202
(716) 541-0730 Fax (716) 541-0760

November 2012

TABLE OF CONTENTS

Page No.

SECTION 1 INTRODUCTION..... 1-1

1.1	Procedures	1-1
1.1.1	Effluent Sampling.....	1-1
1.1.2	Groundwater Sampling.....	1-1
1.1.3	Water Level Measurements.....	1-1
1.1.4	Site Inspections.....	1-2

SECTION 2 RESULTS 2-1

2.1	Effluent Samples	2-1
2.2	Groundwater Analytical Results	2-1
2.3	Water Levels.....	2-1
2.4	Site Inspections.....	2-1
2.5	Maintenance	2-2
2.6	OM&M Oversight	2-2

SECTION 3 SUMMARY AND CONCLUSIONS 3-1

SECTION 4 REFERENCES..... 4-1

APPENDIX A CITY OF NORTH TONAWANDA INDUSTRIAL WASTEWATER DISCHARGE PERMIT AND CHAIN-OF-CUSTODY

APPENDIX B WATER LEVEL RECORDS

APPENDIX C MONTHLY INSPECTION LOGS

APPENDIX D MAINTENANCE RECORD LOGS

APPENDIX E COMPACT DISK CONTAINING REPORT

TABLE OF CONTENTS	
	<u>Page No.</u>

LIST OF TABLES

Table 2.1 Quarterly Site Inspection Results Summary 2-3

LIST OF FIGURES

Figure 1.1 Site Plan..... 1-3

SECTION 1

INTRODUCTION

The Niagara County Refuse Site Potentially Responsible Parties (PRP) Group completed a remedial action at the Niagara County Refuse Site (Site), Wheatfield, New York in 2000. The remedial action was conducted in accordance with the United States Environmental Protection Agency (USEPA) Record of Decision (USEPA, 1993) and the United States District Court Consent Decree (USEPA, 1995). The PRP Group is currently performing operations, maintenance, and monitoring (OM&M) in accordance with the USEPA-approved OM&M Manual (CRA, 2000). This data report summarizes the third quarter monitoring activities conducted from July through September 2012.

1.1 PROCEDURES

1.1.1 Effluent Sampling

The current Industrial Wastewater Discharge Permit (Appendix A) was issued by the City of North Tonawanda, and is effective from March 31, 2010 through April 1, 2013. The current permit has a reduced analytical parameter list compared to the original permit, and a semi-annual sampling frequency. Prior to March 2007, samples were collected monthly. During the current reporting period (July through September 2012), an effluent sample was collected on September 12. The next effluent sample is scheduled to be collected in March 2013. Effluent samples are collected from Wet Well A, which receives water from the leachate collection system surrounding the landfill. Composite 24-hour samples were collected from Wet Well A using an automated sampler.

1.1.2 Groundwater Sampling

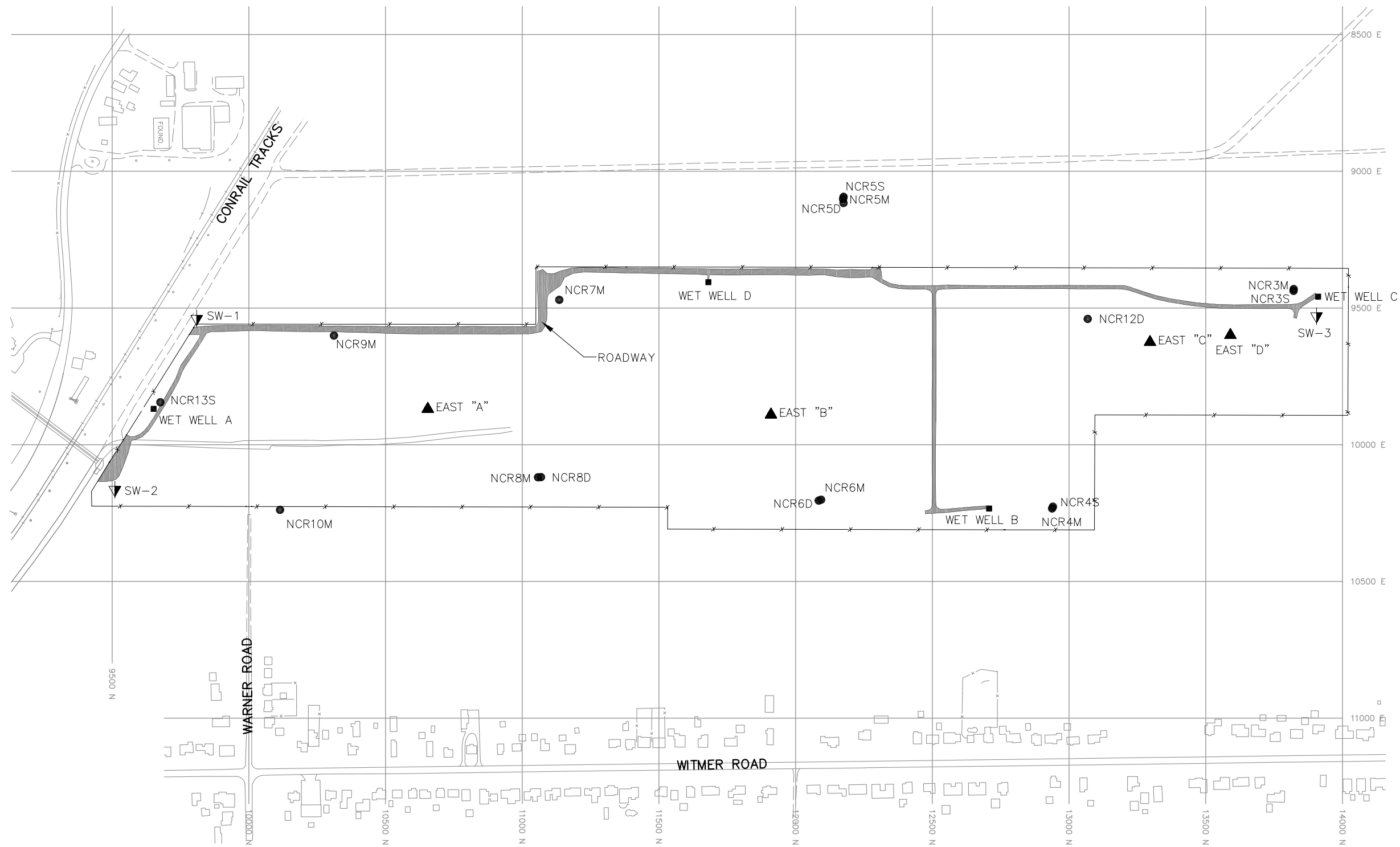
Groundwater samples were not collected during this reporting period. In accordance with the approved OM&M Plan (CRA, 2000), the groundwater sampling frequency was decreased from a quarterly to a semi-annual basis in 2003, and from a semi-annual to an annual basis beginning in 2006. The next round of groundwater samples is scheduled to be collected in November 2012.

1.1.3 Water Level Measurements

Water levels were measured during monthly Site inspections in July, August, and September 2012. Water levels were measured from four observation well locations (Piezometers East A, East B, East C, and East D), four effluent monitoring locations (Wet Wells A, B, C, and D), and four monitoring well locations (NCR-3S, NCR-4S, NCR-5S, and NCR-13S). The water levels were measured with an electronic water level indicator, and reported as an elevation above mean sea level. Figure 1.1 shows the locations of the water level monitoring points.

1.1.4 Site Inspections

Monthly Site inspections were conducted on July 13, August 2, and September 4, 2012. During the Site inspections, the manholes, wet wells, landfill cap, wetlands, perimeter fence, drainage ditches, swale outlets, culverts, gas vents, and monitoring wells were each visually inspected.



LEGEND

- | | |
|--------------|---|
| ▲ EAST "A" | WATER LEVEL MONITORING WELL LOCATION |
| ▼ SW-2 | SURFACE WATER MONITORING LOCATION |
| ■ WET WELL A | EFFLUENT MONITORING LOCATION |
| ● NCR13S | GROUNDWATER QUALITY MONITORING LOCATION |

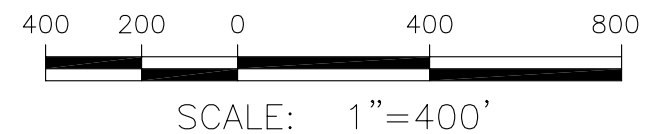


FIGURE 1.1

NIAGARA COUNTY REFUSE SITE
WHEATFIELD, NEW YORK
SITE PLAN

PARSONS

180 LAWRENCE BELL DRIVE, SUITE 104, WILLIAMSVILLE, N.Y. 14221, PHONE: 716-633-7074

SECTION 2

RESULTS

This section describes the results of the third quarter OM&M activities conducted from July through September 2012. Activities during this quarter included cutting back the brush along the perimeter fence, mowing the landfill cap, water level measurements, effluent sampling, and monthly Site inspections. Additionally, non-routine items included providing access for a Town of Wheatfield subcontractor completing drainage upgrades south of the Site and observing repairs to the effluent discharge line damaged by the subcontractor.

2.1 EFFLUENT SAMPLES

One effluent sample was collected during the reporting period (September 12, 2012). The effluent sample was collected by O&M Enterprises, and analyzed by the City of North Tonawanda. The analytical results are used by the City to confirm that the effluent received from the Site meets the criteria for acceptance by the City treatment system. These data are not presented in the quarterly monitoring reports, but will be summarized in the 2012 annual monitoring report. The current City of North Tonawanda Industrial Wastewater Discharge Permit (March 31, 2010 through April 1, 2013) and chain-of-custody for the September 2012 sampling event have been included in Appendix A. The next effluent sample is scheduled to be collected in March 2013.

2.2 GROUNDWATER ANALYTICAL RESULTS

Monitoring wells NCR-3S, NCR-4S, NCR-5S, and NCR-13S were not sampled during this reporting quarter, based on the current annual groundwater sampling schedule specified in the OM&M Manual. Groundwater sample collection is planned for November 2012, assuming groundwater levels are adequate, and sufficient water is available for sampling within the monitoring wells. The locations of the monitoring wells are provided in Figure 1.1.

2.3 WATER LEVELS

Results of water level measurements collected during this reporting period are presented in Appendix B. Water levels were collected from the monitoring locations on July 13, August 2, and September 4, 2012. Each of the monitoring wells was dry during attempts to collect water level measurements. The region was under a moderate drought during the reporting period. Water levels were lower than levels observed in previous years between July and September due to the drought conditions.

2.4 SITE INSPECTIONS

A summary of the Site inspection findings is included in Table 2.1. Copies of the Site Inspection Logs have been included in Appendix C.

Each of the inspections found the manholes and wet wells to be in good condition. Water levels were measured in the wet wells during the inspections and recorded on the water level records.

Examination of the landfill cap vegetative cover included checking for erosion, bare areas, wash-outs, leachate seeps, height of vegetation, and assessing the condition of the vegetation. No surface erosion or leachate seeps were noted. The grass covering the landfill was noted as tall in July, and normal in August and September. Dry conditions were noted during each of the inspections.

Additionally, the access roads were examined for erosion, potholes/puddles, and obstructions. All aspects of the access roads that were examined were deemed acceptable.

The wetlands were visually examined to assess the condition of the vegetation, change in water levels, and to observe general conditions. Wetland vegetation was noted to be in good to fair condition during each of the inspections. Low water level for the time of year was noted in the wetland area during each of the inspections, likely due to the drought conditions.

All other parts of the landfill system which were examined, including the drainage ditches, swale outlets, culverts, and gas vents, were found to be in acceptable condition during the reporting period.

2.5 MAINTENANCE

Scheduled maintenance during the reporting period included mowing the landfill cap, observing excavation related to Town of Wheatfield drainage project inside the fence line, observing repairs to the damaged effluent water line, and mowing inside the perimeter fence. Scheduled maintenance during the reporting period was completed as follows:

- On August 2, grass and brush along the inside of the perimeter fence was cut.
- On August 7 and 14, access to the site was provided for a Town of Wheatfield subcontractor for work related to an excavation for a drainage project. Work completed inside the perimeter fence by the subcontractor was observed and monitored by O&M Enterprises, Inc.
- On August 9, while O&M Enterprises was observing the Town of Wheatfield subcontractor excavating outside the fence, the excavator damaged the 3-inch diameter effluent line going to City of North Tonawanda POTW. The discharge line was shut off and the line was temporarily repaired by the subcontractor. The discharge line was turned back on after the work was complete. On September 7, the discharge line was again shut off and the subcontractor permanently repaired the effluent

line. The discharge line was turned back on once the repairs were completed.

- On September 4, 5, and 6, the cap of the landfill was mowed.

No unscheduled maintenance was required during the reporting period.

Copies of the Maintenance Record Logs have been included in Appendix D.

No major repairs, outside of the repairs to the 3-inch diameter effluent line discussed above, were required during the reporting period.

2.6 OM&M OVERSIGHT

Parsons' Quality Assurance (QA) work included periodic oversight of OM&M activities by O&M Enterprises, Inc., review of monthly inspection and monitoring data, and periodic communications with O&M Enterprises. Upon completion of work performed by O&M Enterprises, routine activity report forms were completed. Parsons reviewed the report forms for completeness, and recorded problems, if any, on the forms (Appendices B, C, and D).

Table 2.1
Quarterly Site Inspection Results Summary

Inspection Item	Acceptable	Requires Action	Comments
Manholes	X		
Wet Wells	X		Water levels were measured monthly.
Wetlands	X		Water level was noted to be low during each of the inspections. Water levels were within the historical range.
Perimeter Fence	X		No damage was observed during the quarter.
Condition of Roads	X		No potholes were observed.
Integrity of the Cap	X		No erosion was observed. Tall vegetation was noted during the July inspection.
Drainage Ditches/Swales	X		
Gas Venting System	X		
Wells	X		Water levels were measured monthly. All monitoring wells were dry during the reporting period due to the moderate drought conditions.
Culverts	X		
Other	X		No issues were identified during the reporting period with any other aspects of the site.

SECTION 3

SUMMARY AND CONCLUSIONS

The following summary and conclusions were developed based on the data collected during this reporting period:

- The landfill was inspected monthly and was appropriately maintained. No major repairs, with the exception of repairs to the damaged effluent discharge line, were required during the reporting period. Damage to the 3-inch diameter effluent discharge line that occurred during an excavation outside the fence, was promptly repaired. Typically, repairs are made as necessary following identification of problems or maintenance needs.
- As specified in the OM&M Manual, annual groundwater monitoring commenced in 2006. Groundwater samples are currently scheduled to be collected in November 2012, assuming sufficient groundwater is available in the wells.
- Water levels were measured in the wet wells, monitoring wells, and the observation wells on the landfill on a monthly basis. Each of the monitoring wells was dry during the reporting quarter due to the moderate drought conditions.
- Wetlands vegetation was in good to fair condition during the inspections, although water levels in the wetlands were lower than typical, due to drought conditions. The wetlands vegetation will continue to be visually assessed during the monthly site inspections.

SECTION 4

REFERENCES

Record of Decision, Niagara County Refuse Site, Wheatfield, Niagara County, New York;
United States Environmental Protection Agency, September 1993.

Consent Decree, Docket 946-849; United States Environmental Protection Agency, February 3,
1995.

Operations, Maintenance and Monitoring Manual for Niagara County Refuse District Site
Remedial Construction, Wheatfield, Niagara County, New York; Conestoga-Rovers &
Associates, December 2000.

APPENDIX A

CITY OF NORTH TONAWANDA INDUSTRIAL WASTEWATER DISCHARGE PERMIT AND CHAIN-OF-CUSTODY

CITY OF NORTH TONAWANDA
6/27/00
INDUSTRIAL WASTEWATER DISCHARGE PERMIT

Permit Number: 2628010

In accordance with the provisions of the Clean Water Act as amended, all terms and conditions set forth in this permit, the City of North Tonawanda Local Sewer Use Ordinance and any applicable Federal, State or local laws or regulations, authorization is hereby granted to: Niagara County Department of Public Works

Engineering Department

59 Park Avenue

Lockport, New York 14094

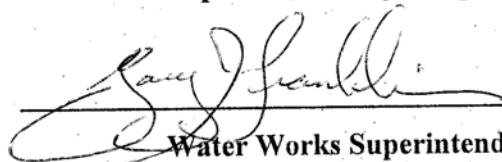
Classified by S.I.C. Number(s): N/A

for the discharge of: groundwater and other wastes generated during Remedial Action construction and implementation into the City of North Tonawanda Sewerage System.

This permit is granted in accordance with an application filed in the offices of the Wastewater Treatment Plant Superintendent located at 830 River Road, and in conformity with specifications and other required data submitted in support of the above named application, all of which are filed with and considered part of this permit. This permit is also granted in accordance with discharge limitations and requirements, monitoring and reporting requirements, and all other conditions set forth in Parts I and II hereof.

Effective this 31st day of March, 2010

To expire the 1st day of April, 2013



Water Works Superintendent

Signed this 16 day of June 2010

PART I. SPECIFIC CONDITIONS
A. DISCHARGE LIMITATIONS AND MONITORING REQUIREMENTS

During the period beginning the effective date of this permit and lasting until the expiration date, discharge from the permitted facility outfall(s) shall be limited and monitored by the permittee as specified below (Refer to attached map for sampling and monitoring sites).

Sample Point	Parameter	Discharge Limitations mg/l except pH Daily Max.	Sampling Period	Sampling Type
001	Total Flow		1 Sampling Day Monthly	continuous
2/	Aluminum	2.0	1 Sample Day semi-annual	24 hr comp.
	Lead	4.6	1 Sampling Day semi-annual	24 hr comp.
	Iron	10	1 Sampling Day semi-annual	24 hr comp.
2/	Magnesium	Monitor Only	1 Sampling Day semi-annual	24 hr comp.
2/	Sodium	Monitor Only	1 Sampling Day semi-annual	24 hr comp.
	pH	Monitor Only	1 Sampling Day semi-annual	grab
2/	BOD	Monitor Only	1 Sampling Day semi-annual	24 hr comp.
2/	Total Suspended Solids	Monitor Only	1 Sampling Day semi-annual	24 hr comp.

PART I. SPECIFIC CONDITIONS

B. DISCHARGE REPORTING REQUIREMENTS

During the period beginning the effective date of this permit and lasting until the expiration date, discharge monitoring results shall be summarized and reported by the permittee on the no later than the days specified below.

[illegible]

PART I. SPECIFIC CONDITIONS

C. SPECIAL REQUIREMENTS

- 1) This permit is written for a duration of three years. Upon renewal of this permit, all parameters will be re-evaluated to develop a parameter list based on chemical concentrations present in the extracted groundwater.
- 2) Frequency of monitoring is to be re-evaluated yearly..
- 3) All monitoring reports (initial and subsequent), are to be received by the Superintendent, no later than thirty (30) days after receipt of validated data.
- 4) It is required that the Permittee have a Site Operations Manual available at all times. All emergency phone numbers must be listed in an appropriate place for easy access by operations personnel. The permittee shall not discharge to the City of North Tonawanda sewerage treatment works during overflow conditions. The permittee is required to cease all pumping operations upon verbal request of the North Tonawanda Wastewater Treatment Plant Superintendent or his assigns. Pumping operations shall not recommence until approved by the North Tonawanda Wastewater Treatment Plant Superintendent or his assigns.
- 5) Analysts are required to use GC/MS method detection limits for most organics (if GC/MS is appropriate); GC/ECD for PCBS/Pesticides and GF method detection limits for metals (where GF is appropriate), as contained in attachment 5 of the NYSDEC TOGs 1.3.8 - New Discharges to Publicly Owned Treatment Works - dated 10/26/94.

CITY OF NORTH TONAWANDA WATER WORKS
WASTEWATER DEPARTMENT
830 RIVER ROAD
NORTH TONAWANDA, NEW YORK 14120
PHONE: (716) 695 - 8560
FAX: (716) 695 - 8563

Scott Kiedrowski
Acting-Superintendent

John C. Maurer
Maintenance Supervisor



David A. Scott
Chief Operator

William M. Davignon
Lab Director/Chemist

CHAIN OF CUSTODY
Sampling Record
NIAGARA COUNTY REFUSE SITE

DATE: September 12 & 13, 2012

SAMPLES SIGNATURE Richard C. Baker SITE NAME: NIAGARA COUNTY REFUSE SITE

SPL #	SAMPLE NAME	DATE	TIME	SAMPLE LOCATION	SAMPLE TYPE	#OF BTLS
01	91212 RC6EFF	9/12/12	0800	West Well A	volatiles	2
02	" " "	9/12/12	1500	"	"	2
03	" " "	9/13/12	0800	"	"	2
04	" " "	9/12/12 - 9/13/12	0800 - 0800	"	wet chemistry	1

FLows: FINAL METER READING 5386015
INITIAL METER READING 63385481
MONTHLY FLOW 534

RELINQUISHED BY: Richard C. Baker

RECEIVED BY: Michael E. R.

DATE 9/13/12

TIME 8:22 AM

APPENDIX B

WATER LEVEL RECORDS

WATER LEVEL RECORD

PROJECT NAME: *NIAGARA COUNTY
REFUSE SITE*

LOCATION: Wheatfield, New York

DATE: 7/13/2012
(MM DD YY)

CREW MEMBERS: RC Becken

Observation Well	Time of Measurement	Top of Casing Elevation A	Depth to Water B	Water Level Elevation A-B
		feet	feet	feet
EAST "A"	12:10	598.93	26.4	572.53
EAST "B"	12:25	596.23	19.9	576.33
EAST "C"	12:50	598.69	20.82	575.86
EAST "D"	13:10	593.20	16.15	577.05
NCR-3S	10:50	579.60	dry	
NCR-4S	11:10	577.88	dry	
NCR-5S	11:50	579.34	dry	
NCR-13S	9:55	577.15	dry	

WET WELLS

Wet Well	Time of Measurement	Total Flow	Depth of Water
WW A	9:50		~7"
WW B	11:25		~5"
WW C	10:35		~9"
WW D	10:10		~6"

Total System Flow	Time of Measurement
63333891	9:50

FP-3D

WATER LEVEL RECORD

PROJECT NAME: *NIAGARA COUNTY
REFUSE SITE*

LOCATION: Wheatfield, New York

DATE: 8/2/2012
(MM DD YY)

CREW MEMBERS: RC Becken

Observation Well	Time of Measurement	Top of Casing Elevation A	Depth to Water B	Water Level Elevation A-B
		feet	feet	feet
EAST "A"	11:10	598.93	26.34	572.59
EAST "B"	11:25	596.23	16.54	579.69
EAST "C"	11:50	598.69	20.63	578.06
EAST "D"	12:10	593.20	15.97	577.23
NCR-3S	9:50	579.60	dry	
NCR-4S	10:10	577.88	dry	
NCR-5S	10:50	579.34	dry	
NCR-13S	8:55	577.15	dry	

WET WELLS

Wet Well	Time of Measurement	Total Flow	Depth of Water
WW A	8:45		~6"
WW B	10:25		~10"
WW C	9:35		~10"
WW D	9:10		~5"

Total System Flow	Time of Measurement
63353010	8:45

FP-3D

WATER LEVEL RECORD

PROJECT NAME: *NIAGARA COUNTY
REFUSE SITE*

LOCATION: Wheatfield, New York

DATE: 9/4/2012
(MM DD YY)

CREW MEMBERS: RC Becken

Observation Well	Time of Measurement	Top of Casing Elevation A	Depth to Water B	Water Level Elevation A-B
		feet	feet	feet
EAST "A"	11:50	598.93	26.35	572.58
EAST "B"	11:40	596.23	19.99	576.24
EAST "C"	12:20	598.69	20.6	578.09
EAST "D"	12:40	593.20	16	577.2
NCR-3S	10:15	579.60	dry	
NCR-4S	10:50	577.88	dry	
NCR-5S	11:00	579.34	dry	
NCR-13S	9:20	577.15	dry	

WET WELLS

Wet Well	Time of Measurement	Total Flow	Depth of Water
WW A	9:20		~8"
WW B	10:55		~10"
WW C	10:10		~10"
WW D	9:45		~7"

Total System Flow	Time of Measurement
6337840	9:20

FP-3D

APPENDIX C

MONTHLY INSPECTION LOGS

MONTHLY INSPECTION LOG

PROJECT NAME: Niagara County Refuse Site

LOCATION: Wheatfield, NY

 DATE: 7/13/2012
 (MM DD YY)
INSPECTOR(S): RC Becken

<i>Item</i>	<i>Inspect For</i>	<i>Action Required</i>	<i>Comments</i>
1 Perimeter collection System/Off-Site Forcemain			
<input type="checkbox"/>	Manholes	- cover on securely	<u>yes</u>
		- condition of cover	<u>good condition</u>
		- condition of inside of manhole	<u>good condition</u>
		- flow conditions	<u>no apparent flow</u>
<input type="checkbox"/>	Wet Wells	- cover on securely	<u>yes</u>
		- condition of cover	<u>good condition</u>
		- condition of inside of wet well	<u>good condition</u>
2 Landfill Cap			
<input type="checkbox"/>	Vegetated Soil Cover	- erosion	<u>none</u>
		- bare areas	<u>none</u>
		- washouts	<u>none</u>
		- leachate seeps	<u>none</u>
		- length of vegetation	<u>tall</u>
		- dead/dying vegetation	<u>very dry</u>

MONTHLY INSPECTION LOG

PROJECT NAME: Niagara County Refuse Site

LOCATION: Wheatfield, NY

DATE: 7/13/2012
(MM DD YY)INSPECTOR(S): RC Becken

<i>Item</i>	<i>Inspect For</i>	<i>Action Required</i>	<i>Comments</i>
2 Landfill Cap (continued)			
<input type="checkbox"/> Access Roads	- bare areas, dead/dying veg.	<u>none</u>	<u>very dry</u>
<input type="checkbox"/>	- erosion	<u>none</u>	<u>none</u>
<input type="checkbox"/>	- potholes or puddles	<u>none</u>	<u>none</u>
<input type="checkbox"/>	- obstruction	<u>none</u>	<u>none</u>
3 Wetlands (Area "F")	- dead/dying vegetation	<u>none</u>	<u>none</u>
	- change in water budget	<u>none</u>	<u>low</u>
	- general conditions of wetlands	<u>none</u>	<u>good condition</u>
4 Other Site Systems			
<input type="checkbox"/> Perimeter Fence	- integrity of fence	<u>none</u>	<u>good condition</u>
<input type="checkbox"/>	- integrity of gates	<u>none</u>	<u>good condition</u>
<input type="checkbox"/>	- integrity of locks	<u>none</u>	<u>good condition</u>
<input type="checkbox"/>	- placement and condition of signs	<u>none</u>	<u>good condition</u>

MONTHLY INSPECTION LOG

PROJECT NAME: Niagara County Refuse Site

LOCATION: Wheatfield, NY

DATE: 7/13/2012
(MM DD YY)INSPECTOR(S): RC Becken

<i>Item</i>	<i>Inspect For</i>	<i>Action Required</i>	<i>Comments</i>
4 Other Site Systems (continued)			
<input type="checkbox"/> Drainage Ditches/	- sediment buildup	<u>none</u>	<u>none</u>
<input type="checkbox"/> Swale Outlets	- erosion	<u>none</u>	<u>none</u>
<input type="checkbox"/>	- condition of erosion protection	<u>none</u>	<u>good condition</u>
<input type="checkbox"/>	- flow obstructions	<u>none</u>	<u>none</u>
<input type="checkbox"/>	- dead/dying vegetation	<u>none</u>	<u>very dry</u>
<input type="checkbox"/>	- cable concrete/gabion mats and riprap	<u>none</u>	<u>good condition</u>
<input type="checkbox"/> Culverts	- sediment build-up	<u>none</u>	<u>none</u>
<input type="checkbox"/>	- erosion	<u>none</u>	<u>none</u>
<input type="checkbox"/>	- condition of erosion protection	<u>none</u>	<u>good condition</u>
<input type="checkbox"/>	- flow obstructions	<u>none</u>	<u>none</u>
<input type="checkbox"/> Gas Vents	- intact/damage	<u>none</u>	<u>intact</u>
<input type="checkbox"/> Wells	- locks secure	<u>none</u>	<u>yes</u>

MONTHLY INSPECTION LOG

PROJECT NAME: Niagara County Refuse Site

LOCATION: Wheatfield, NY

DATE: 8/2/2012
(MM DD YY)INSPECTOR(S): RC Becken

<i>Item</i>	<i>Inspect For</i>	<i>Action Required</i>	<i>Comments</i>
1 Perimeter collection System/Off-Site Forcemain			
<input type="checkbox"/>	Manholes	- cover on securely	<u>yes</u>
		- condition of cover	<u>good</u>
		- condition of inside of manhole	<u>good</u>
		- flow conditions	<u>no flow</u>
<input type="checkbox"/>	Wet Wells	- cover on securely	<u>yes</u>
		- condition of cover	<u>good</u>
		- condition of inside of wet well	<u>good</u>
2 Landfill Cap			
<input type="checkbox"/>	Vegetated Soil Cover	- erosion	<u>none</u>
		- bare areas	<u>none</u>
		- washouts	<u>none</u>
		- leachate seeps	<u>none</u>
		- length of vegetation	<u>normal</u>
		- dead/dying vegetation	<u>dry weather conditions</u>

MONTHLY INSPECTION LOG

PROJECT NAME: Niagara County Refuse Site

LOCATION: Wheatfield, NY

 DATE: 8/2/2012
 (MM DD YY)
INSPECTOR(S): RC Becken

<i>Item</i>	<i>Inspect For</i>	<i>Action Required</i>	<i>Comments</i>
2 Landfill Cap (continued)			
<input type="checkbox"/> Access Roads	- bare areas, dead/dying veg.	<u>none</u>	<u>dry weather conditions</u>
<input type="checkbox"/>	- erosion	<u>none</u>	<u>none</u>
<input type="checkbox"/>	- potholes or puddles	<u>none</u>	<u>none</u>
<input type="checkbox"/>	- obstruction	<u>none</u>	<u>none</u>
3 Wetlands (Area "F")			
	- dead/dying vegetation	<u>none</u>	<u>dry weather conditions</u>
	- change in water budget	<u>none</u>	<u>low</u>
	- general conditions of wetlands	<u>none</u>	<u>OK</u>
4 Other Site Systems			
<input type="checkbox"/> Perimeter Fence	- integrity of fence	<u>none</u>	<u>good</u>
<input type="checkbox"/>	- integrity of gates	<u>none</u>	<u>good</u>
<input type="checkbox"/>	- integrity of locks	<u>none</u>	<u>good</u>
<input type="checkbox"/>	- placement and condition of signs	<u>none</u>	<u>good</u>

MONTHLY INSPECTION LOG

PROJECT NAME: Niagara County Refuse Site

LOCATION: Wheatfield, NY

 DATE: 8/2/2012
 (MM DD YY)
INSPECTOR(S): RC Becken

<i>Item</i>	<i>Inspect For</i>	<i>Action Required</i>	<i>Comments</i>
4 Other Site Systems (continued)			
<input type="checkbox"/> Drainage Ditches/	- sediment buildup	<u>none</u>	<u>none</u>
<input type="checkbox"/> Swale Outlets	- erosion	<u>none</u>	<u>none</u>
<input type="checkbox"/>	- condition of erosion protection	<u>none</u>	<u>good</u>
<input type="checkbox"/>	- flow obstructions	<u>none</u>	<u>none</u>
<input type="checkbox"/>	- dead/dying vegetation	<u>none</u>	<u>dry weather conditions</u>
<input type="checkbox"/>	- cable concrete/gabion mats and riprap	<u>none</u>	<u>good</u>
<input type="checkbox"/> Culverts	- sediment build-up	<u>none</u>	<u>none</u>
<input type="checkbox"/>	- erosion	<u>none</u>	<u>none</u>
<input type="checkbox"/>	- condition of erosion protection	<u>none</u>	<u>good</u>
<input type="checkbox"/>	- flow obstructions	<u>none</u>	<u>none</u>
<input type="checkbox"/> Gas Vents	- intact/damage	<u>none</u>	<u>intact</u>
<input type="checkbox"/> Wells	- locks secure	<u>none</u>	<u>yes</u>

MONTHLY INSPECTION LOG

PROJECT NAME: Niagara County Refuse Site

LOCATION: Wheatfield, NY

 DATE: 9/4/2012
 (MM DD YY)
INSPECTOR(S): RC Becken

<i>Item</i>	<i>Inspect For</i>	<i>Action Required</i>	<i>Comments</i>
1 Perimeter collection System/Off-Site Forcemain			
<input type="checkbox"/>	Manholes	- cover on securely	<u>yes</u>
		- condition of cover	<u>good</u>
		- condition of inside of manhole	<u>good</u>
		- flow conditions	<u>no flow</u>
<input type="checkbox"/>	Wet Wells	- cover on securely	<u>yes</u>
		- condition of cover	<u>good</u>
		- condition of inside of wet well	<u>good</u>
2 Landfill Cap			
<input type="checkbox"/>	Vegetated Soil Cover	- erosion	<u>none</u>
		- bare areas	<u>none</u>
		- washouts	<u>none</u>
		- leachate seeps	<u>none</u>
		- length of vegetation	<u>medium</u>
		- dead/dying vegetation	<u>extremely dry</u>

MONTHLY INSPECTION LOG

PROJECT NAME: Niagara County Refuse Site

LOCATION: Wheatfield, NY

 DATE: 9/4/2012
 (MM DD YY)
INSPECTOR(S): RC Becken

<i>Item</i>	<i>Inspect For</i>	<i>Action Required</i>	<i>Comments</i>
2 Landfill Cap (continued)			
<input type="checkbox"/> Access Roads	- bare areas, dead/dying veg.	<u>none</u>	<u>none</u>
<input type="checkbox"/>	- erosion	<u>none</u>	<u>none</u>
<input type="checkbox"/>	- potholes or puddles	<u>none</u>	<u>none</u>
<input type="checkbox"/>	- obstruction	<u>none</u>	<u>none</u>
3 Wetlands (Area "F")	- dead/dying vegetation	<u>none</u>	<u>extremely dry</u>
	- change in water budget	<u>none</u>	<u>low</u>
	- general conditions of wetlands	<u>none</u>	<u>fair</u>
4 Other Site Systems			
<input type="checkbox"/> Perimeter Fence	- integrity of fence	<u>none</u>	<u>good</u>
<input type="checkbox"/>	- integrity of gates	<u>none</u>	<u>good</u>
<input type="checkbox"/>	- integrity of locks	<u>none</u>	<u>good</u>
<input type="checkbox"/>	- placement and condition of signs	<u>none</u>	<u>good</u>

MONTHLY INSPECTION LOG

PROJECT NAME: Niagara County Refuse Site

LOCATION: Wheatfield, NY

 DATE: 9/4/2012
 (MM DD YY)
INSPECTOR(S): RC Becken

<i>Item</i>	<i>Inspect For</i>	<i>Action Required</i>	<i>Comments</i>
4 Other Site Systems (continued)			
<input type="checkbox"/> Drainage Ditches/	- sediment buildup	<u>none</u>	<u>none</u>
<input type="checkbox"/> Swale Outlets	- erosion	<u>none</u>	<u>none</u>
<input type="checkbox"/>	- condition of erosion protection	<u>none</u>	<u>good</u>
<input type="checkbox"/>	- flow obstructions	<u>none</u>	<u>none</u>
<input type="checkbox"/>	- dead/dying vegetation	<u>none</u>	<u>extremely dry</u>
<input type="checkbox"/>	- cable concrete/gabion mats and riprap	<u>none</u>	<u>good</u>
<input type="checkbox"/> Culverts	- sediment build-up	<u>none</u>	<u>none</u>
<input type="checkbox"/>	- erosion	<u>none</u>	<u>none</u>
<input type="checkbox"/>	- condition of erosion protection	<u>none</u>	<u>good</u>
<input type="checkbox"/>	- flow obstructions	<u>none</u>	<u>none</u>
<input type="checkbox"/> Gas Vents	- intact/damage	<u>none</u>	<u>intact</u>
<input type="checkbox"/> Wells	- locks secure	<u>none</u>	<u>yes</u>

APPENDIX D

MAINTENANCE RECORD LOGS

MAINTENANCE RECORD LOG

PROJECT NAME: Niagara County Refuse Site

LOCATION: Wheatfield, New York

CREW MEMBERS: RC Becken

1. Date 8/2/2012

Time 9:00

Scheduled/Unschedule scheduled

Type of Maintenance Performed: mowed grass near fence line

2. Company Performing Maintenance

Name: O&M Enterprises, Inc.

Address: 7134 Marigold Dr

North Tonawanda, NY

Contact Name: Rick Becken

3. Methods Used:

tractor and mower

Description of Material Removed:

none

Problems/Comments:

none

8/2/2012
DATE

RC Becken
INSPECTOR

INSPECTOR'S SIGNATURE

MAINTENANCE RECORD LOG

PROJECT NAME: *Niagara County Refuse Site*

LOCATION: Wheatfield, New York

CREW MEMBERS: RC Becken

1. Date 8/7/2012

Time 900

Scheduled/Unscheduled:

Type of Maintenance Performed: oversite for contractor

2. Company Performing Maintenance

Name: O&M Enterprises, Inc.

Address: 7134 Marigold Dr.

North Tonawanda, NY 14120

Contact Name: Rick Becken

3. Methods Used:

allow town contractor in gate to excavate waterline

Description of Material Removed:

none

Problems/Comments:

None

8/7/2012
DATE

RC Becken
INSPECTOR

INSPECTOR'S SIGNATURE

MAINTENANCE RECORD LOG

PROJECT NAME: Niagara County Refuse Site

LOCATION: Wheatfield, New York

CREW MEMBERS: RC Becken

1. Date 8/9/2012

Time 915

Scheduled/Unscheduled:

Type of Maintenance Performed: oversite for contractor

2. Company Performing Maintenance

Name: O&M Enterprises, Inc.

Address: 7134 Marigold Dr.

North Tonawanda, NY 14120

Contact Name: Rick Becken

3. Methods Used:

stopped at site, the town contractor was excavating for the drainage
project, he working near our discharge pipe so I stayed I noticed that he had worked
around a 2 inch pipe but had broke a 3-4 inch pipe, as I checked the broken pipe I found
it was our discharge line. The contractor temporarily repaired the broken broken pipe.

Description of Material Removed:

none

Problems/Comments:

Needs permaanent repair

8/9/2012
DATE

RC Becken
INSPECTOR

INSPECTOR'S SIGNATURE

MAINTENANCE RECORD LOG

PROJECT NAME: *Niagara County Refuse Site*

LOCATION: *Wheatfield, New York*

CREW MEMBERS: RC Becken

1. Date *8/14/2012*

Time *900*

Scheduled/Unscheduled:

Type of Maintenance Performed: oversite for contractor

2. Company Performing Maintenance

Name: O&M Enterprises, Inc.

Address: 7134 Marigold Dr.

North Tonawanda, NY 14120

Contact Name: Rick Becken

3. Methods Used:

Allowed contractor in gate to fill excavation dug for drainage project

Description of Material Removed:

none

Problems/Comments:

8/14/2012

RC Becken

DATE

INSPECTOR

INSPECTOR'S SIGNATURE

FORM 2

MAINTENANCE RECORD LOG

PROJECT NAME: *Niagara County Refuse Site*

LOCATION: Wheatfield, New York

CREW MEMBERS: RC Becken

1. Date 9/4/2012

Time 8:30

Scheduled/Unscheduled:

Type of Maintenance Performed: mowing grass

2. Company Performing Maintenance

Name: O&M Enterprises, Inc.

Address: 7134 Marigold Dr.

North Tonawanda, NY

Contact Name: Rick Becken

3. Methods Used:

tractor and mower

Description of Material Removed:

none

Problems/Comments:

none

9/4/2012
DATE

RC Becken
INSPECTOR

INSPECTOR'S SIGNATURE

MAINTENANCE RECORD LOG

PROJECT NAME: Niagara County Refuse Site

LOCATION: Wheatfield, New York

CREW MEMBERS: RC Becken

1. Date 9/5/2012

Time 8:00

Scheduled/Unscheduled:

Type of Maintenance Performed: mowing grass

2. Company Performing Maintenance

Name: O&M Enterprises, Inc.

Address: 7134 Marigold Dr.

North Tonawanda, NY

Contact Name: Rick Becken

3. Methods Used:

tractor and mower

Description of Material Removed:

none

Problems/Comments:

none

9/5/2012
DATE

RC Becken
INSPECTOR

INSPECTOR'S SIGNATURE

MAINTENANCE RECORD LOG

PROJECT NAME: *Niagara County Refuse Site*

LOCATION: Wheatfield, New York

CREW MEMBERS: RC Becken

1. Date 9/6/2012

Time 8:00

Scheduled/Unscheduled:

Type of Maintenance Performed: mowing grass

2. Company Performing Maintenance

Name: O&M Enterprises, Inc.

Address: 7134 Marigold Dr.

North Tonawanda, NY

Contact Name: Rick Becken

3. Methods Used:

tractor and mower

Description of Material Removed:

none

Problems/Comments:

none

9/6/2012
DATE

RC Becken
INSPECTOR

INSPECTOR'S SIGNATURE

MAINTENANCE RECORD LOG

PROJECT NAME: *Niagara County Refuse Site*

LOCATION: Wheatfield, New York

CREW MEMBERS: RC Becken

1. Date 9/7/2012

Time 900

Scheduled/Unscheduled:

Type of Maintenance Performed: oversite for contractor

2. Company Performing Maintenance

Name: O&M Enterprises, Inc.

Address: 7134 Marigold Dr.

North Tonawanda, NY 14120

Contact Name: Rick Becken

3. Methods Used:

oversite for effluent pipe repair

Description of Material Removed:

none

Problems/Comments:

None

9/7/2012
DATE

RC Becken
INSPECTOR

INSPECTOR'S SIGNATURE

APPENDIX E

COMPACT DISK CONTAINING REPORT