

QUARTERLY DATA SUMMARY REPORT THIRD QUARTER 2017

NIAGARA COUNTY REFUSE DISTRICT SITE

Wheatfield, Niagara County, New York

(NYSDEC Site No. 9-32-026)

SUBMITTED TO:



UNITED STATES
ENVIRONMENTAL PROTECTION
AGENCY



NEW YORK STATE
DEPARTMENT OF
ENVIRONMENTAL CONSERVATION

SUBMITTED FOR:

**NIAGARA COUNTY REFUSE DISTRICT
AND PRP GROUP**

PREPARED BY:

PARSONS

40 La Riviere Drive, Suite 350
Buffalo, New York 14202
(716) 541-0730 Fax (716) 541-0760

October 2017

QUARTERLY DATA SUMMARY REPORT THIRD QUARTER 2017

**NIAGARA COUNTY REFUSE DISTRICT SITE
Wheatfield, Niagara County, New York
(NYSDEC Site No. 9-32-026)**

Prepared For:

**NIAGARA COUNTY REFUSE DISTRICT
AND PRP GROUP**

Prepared By:

PARSONS
40 La Riviere Drive, Suite 350
Buffalo, New York 14202
(716) 541-0730 Fax (716) 541-0760

October 2017

TABLE OF CONTENTS

Page No.

SECTION 1 INTRODUCTION.....	1-1
1.1 Procedures	1-1
1.1.1 Effluent Sampling.....	1-1
1.1.2 Groundwater Sampling.....	1-1
1.1.3 Water Level Measurements.....	1-1
1.1.4 Site Inspections.....	1-1
SECTION 2 RESULTS	2-1
2.1 Effluent Samples	2-1
2.2 Groundwater Analytical Results	2-1
2.3 Water Levels.....	2-1
2.4 Site Inspections.....	2-1
2.5 Maintenance	2-2
2.6 OM&M Oversight	2-2
SECTION 3 SUMMARY AND CONCLUSIONS	3-1
SECTION 4 REFERENCES.....	4-1
APPENDIX A CITY OF NORTH TONAWANDA INDUSTRIAL WASTEWATER DISCHARGE PERMIT	
APPENDIX B WATER LEVEL RECORDS	
APPENDIX C MONTHLY INSPECTION LOGS	
APPENDIX D MAINTENANCE RECORD LOGS	
APPENDIX E COMPACT DISK CONTAINING REPORT	

TABLE OF CONTENTS

Page No.

LIST OF TABLES

Table 2.1 Quarterly Site Inspection Results Summary	2-3
---	-----

LIST OF FIGURES

Figure 1.1 Site Plan.....	1-3
---------------------------	-----

SECTION 1

INTRODUCTION

The Niagara County Refuse Site Potentially Responsible Parties (PRP) Group completed a remedial action at the Niagara County Refuse Site (Site), Wheatfield, New York in 2000. The remedial action was conducted in accordance with the United States Environmental Protection Agency (USEPA) Record of Decision (USEPA, 1993) and the United States District Court Consent Decree (USEPA, 1995). The PRP Group is currently performing operations, maintenance, and monitoring (OM&M) in accordance with the USEPA-approved OM&M Manual (CRA, 2000). This data report summarizes the third quarter monitoring activities conducted from July through September 2017.

1.1 PROCEDURES

1.1.1 Effluent Sampling

The current Industrial Wastewater Discharge Permit (Appendix A) was issued by the City of North Tonawanda, and is effective through April 1, 2019. The current permit has a reduced analytical chemical parameter list compared to the original permit, and a semi-annual sampling frequency. Prior to March 2007, samples were collected monthly. In the current reporting period (July through September 2017), an effluent sample was not collected. The next effluent sample is scheduled to be collected in October 2017.

1.1.2 Groundwater Sampling

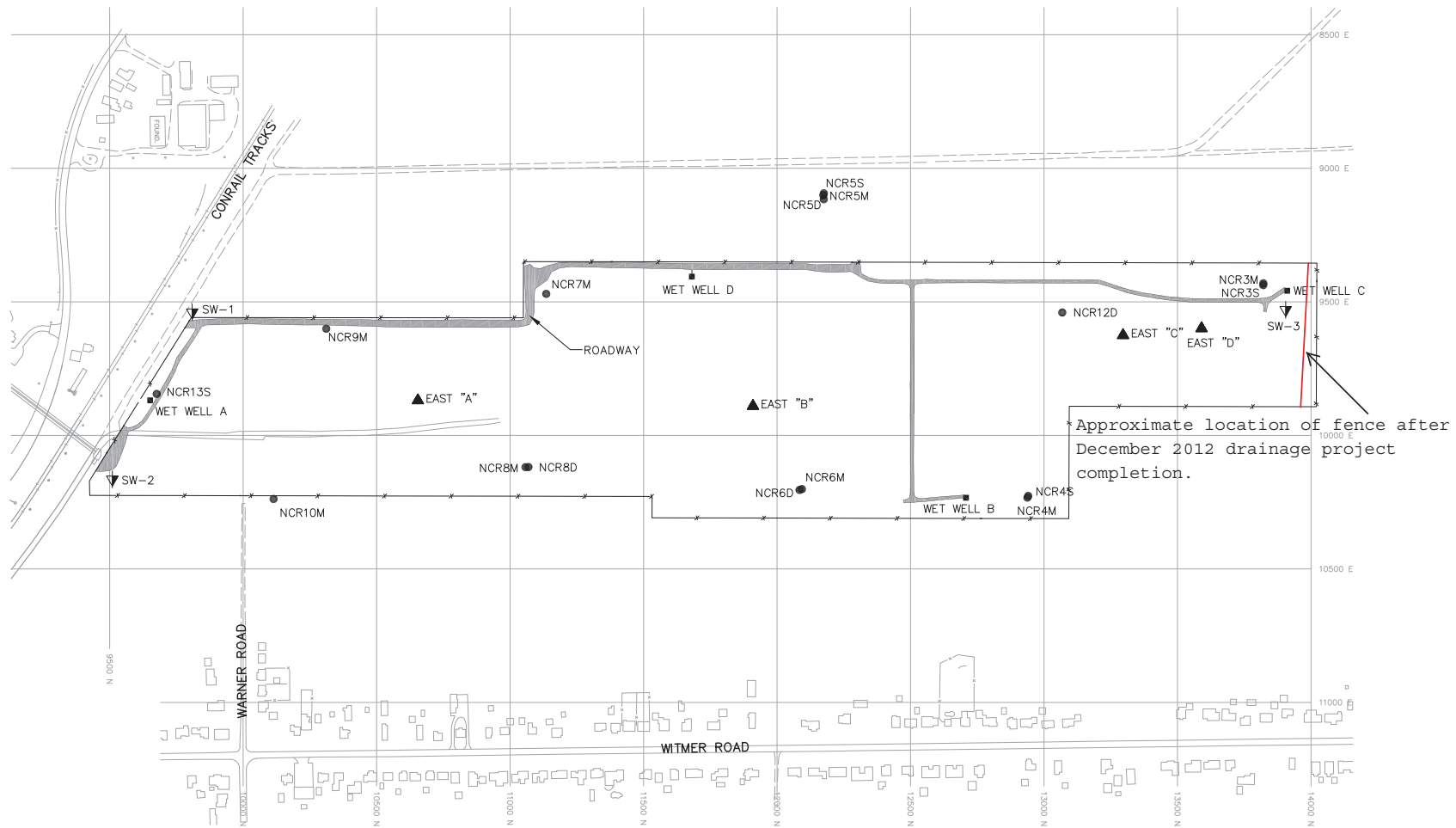
Groundwater samples were not collected during this reporting period. In accordance with the approved OM&M Plan (CRA, 2000), the groundwater sampling frequency was decreased from a quarterly to a semi-annual basis in 2003, and from a semi-annual to an annual basis beginning in 2006. The next round of groundwater samples is scheduled to be collected in April 2018.

1.1.3 Water Level Measurements

Water levels were measured in July, August, and September 2017 at four observation well locations (Piezometers East A, East B, East C, and East D), four effluent monitoring locations (Wet Wells A, B, C, and D), and four monitoring well locations (NCR-3S, NCR-4S, NCR-5S, and NCR-13S). The water levels were measured with an electronic water level indicator, and reported as an elevation above mean sea level. Figure 1.1 shows the locations of the water level monitoring points.

1.1.4 Site Inspections

Monthly Site inspections were conducted on July 25, August 15, and September 20, 2017. During the Site inspections, the manholes, wet wells, landfill cap, wetlands, perimeter fence, drainage ditches, swale outlets, culverts, gas vents, and monitoring wells were each visually inspected.



LEGEND

- ▲ EAST "A" WATER LEVEL MONITORING WELL LOCATION
- ▼ SW-2 SURFACE WATER MONITORING LOCATION
- WET WELL A EFFLUENT MONITORING LOCATION
- NCR13S GROUNDWATER QUALITY MONITORING LOCATION



FIGURE 1.1

NIAGARA COUNTY REFUSE SITE
WHEATFIELD, NEW YORK
SITE PLAN

PARSONS

180 LAWRENCE BELL DRIVE, SUITE 104, WILLIAMSVILLE, N.Y. 14221, PHONE: 716-633-7074

SECTION 2

RESULTS

This section describes the results of the third quarter OM&M activities conducted in July, August, and September 2017. Activities during this quarter included annual pump maintenance in Wet Well D, removing tree branches and limbs from Site drainage ditches, water level measurements from observation wells and wet wells, and monthly Site inspections.

2.1 EFFLUENT SAMPLES

No effluent samples were required to be collected under the discharge permit during the reporting period. The next effluent sampling is scheduled to be collected in October 2017. The current City of North Tonawanda Industrial Wastewater Discharge Permit (March 31, 2016 through April 1, 2019) is included in Appendix A.

2.2 GROUNDWATER ANALYTICAL RESULTS

Monitoring wells NCR-3S, NCR-4S, NCR-5S, and NCR-13S were not sampled during this reporting quarter, based on the current annual groundwater sampling schedule specified in the OM&M Manual (CRA, 2000). Groundwater sample collection for the above-listed wells is planned for April 2018, assuming groundwater levels are adequate, and sufficient water is available for sampling within the wells. The locations of the monitoring wells are provided in Figure 1.1.

2.3 WATER LEVELS

Results of water level measurements collected during this reporting period are presented in Appendix B. Water levels were collected from the monitoring locations on July 10, August 15, and September 6, 2017. Water levels generally decreased over the reporting period. Measured water levels were consistent with the levels observed in previous years between July and September.

2.4 SITE INSPECTIONS

A summary of the Site inspection findings is included in Table 2.1. The Site Inspection Logs have been included in Appendix C.

Each of the inspections found the manholes and wet wells to be in good condition. Water levels were measured in the wet wells during the inspections and recorded on the water level records.

Examination of the landfill cap vegetative cover included checking for erosion, bare areas, wash-outs, leachate seeps, height of vegetation, and assessing the condition of the vegetation. No surface erosion or leachate seeps were noted. No issues were observed with the grass covering the landfill during the reporting period, and no actions were required. No dead or dying vegetation was noted on the landfill cap.

Additionally, the access roads were examined for erosion, potholes/puddles, and obstructions. All aspects of the access roads that were examined were deemed acceptable during each of the inspections during the reporting period.

The wetlands were visually examined to assess the condition of the vegetation, change in water levels, and to observe general conditions. No issues were noted with the wetland vegetation during the inspections. The water level in the wetland was noted to be within the range expected during each of the inspections. No dead or dying wetland vegetation was noted during the site inspections. No issues were noted concerning the general condition of the wetlands during the inspections, with no action required, during each of the inspections during the reporting period.

No dead or dying vegetation was noted in the drainage ditches and swale outlets during the July through September Site inspections. A few tree branches and limbs were removed from the drainage ditches during the September inspection. No erosion or flow obstruction was observed and the condition of the erosion protection devices were in good condition.

All other parts of the landfill system which were examined, including the culverts and gas vents, were found to be in acceptable condition during the reporting period.

2.5 MAINTENANCE

Scheduled maintenance during the reporting period included annual pump maintenance at Wet Well D on July 18, removal of broken tree branches and limbs from the Site drainage ditch on September 20, and replacement of a sticking lock at the Site entrance gate also on September 20. Annual maintenance of the pump included pulling the pump, cleaning, testing with a volt meter, and re-installation of the pump. No unscheduled maintenance was required during the reporting period.

The Maintenance Record Logs have been included in Appendix D.

No major repairs were required during the reporting quarter.

2.6 OM&M OVERSIGHT

Parsons' Quality Assurance (QA) work included periodic oversight of OM&M activities by GHD, review of monthly inspection and monitoring data, and periodic communications with GHD. Upon completion of work performed by GHD, routine activity report forms were completed. Parsons reviewed the report forms for completeness, and recorded problems, if any, on the forms (Appendices B, C, and D).

Table 2.1
Quarterly Site Inspection Results Summary

Inspection Item	Acceptable	Requires Action	Comments
Manholes	X		No issues were identified.
Wet Wells	X		Water levels were measured monthly. Annual pump maintenance was completed at Wet Well D in July.
Wetlands	X		Water levels were within the historical range. No dead or dying vegetation in the wetlands was noted during the monthly inspections.
Perimeter Fence	X		No damage was observed during the quarter. A sticking lock on the main gate was replaced during the September inspection.
Condition of Roads	X		No potholes were observed.
Integrity of the Cap	X		No erosion was observed. Vegetation length was normal height for time of year. No dead or dying vegetation was noted during the inspections.
Drainage Ditches/Swales	X		No dead or dying vegetation was noted in the ditches and swales during the site inspections. Broken limbs and branches were removed during the September Site inspection.
Gas Venting System	X		No issues were identified.
Wells	X		Water levels were measured monthly.
Culverts	X		No issues were identified.
Other	X		No issues were identified with any other aspects of the site.

SECTION 3

SUMMARY AND CONCLUSIONS

The following summary and conclusions were developed based on the data collected during this reporting period:

- The landfill was inspected monthly and was appropriately maintained. No major repairs were required during the reporting period.
- As specified in the OM&M Manual, annual groundwater monitoring commenced in 2006. Groundwater samples were not collected during this reporting period, and are currently scheduled to be collected in April 2018, assuming sufficient groundwater is available in the wells.
- Water levels were measured in the wet wells, monitoring wells, and the observation wells on the landfill on a monthly basis. Water levels generally decreased over the reporting period. Measured water levels were consistent with the levels observed in previous years between July and September.
- Wetlands vegetation was in a condition typical for the time of year during each of the monthly inspections. The wetlands vegetation will continue to be visually assessed during the monthly site inspections.

SECTION 4

REFERENCES

Record of Decision, Niagara County Refuse Site, Wheatfield, Niagara County, New York; United States Environmental Protection Agency, September 1993.

Consent Decree, Docket 946-849; United States Environmental Protection Agency, February 3, 1995.

Operations, Maintenance and Monitoring Manual for Niagara County Refuse District Site Remedial Construction, Wheatfield, Niagara County, New York; Conestoga-Rovers & Associates, December 2000.

APPENDIX A

CITY OF NORTH TONAWANDA INDUSTRIAL WASTEWATER DISCHARGE PERMIT

CITY OF NORTH TONAWANDA
INDUSTRIAL WASTEWATER DISCHARGE PERMIT

Permit Number: 2628010

In accordance with the provisions of the Clean Water Act as amended, all terms and conditions set forth in this permit, the City of North Tonawanda Local Sewer Use Ordinance and any applicable Federal, State or local laws or regulations, authorization is hereby granted to:

Niagara County Department of Public Works
Engineering Department
59 Park Avenue
Lockport, NY 14094

Site: **Niagara County Refuse Site**

Witmer Road
Town of Wheatfield, NY 14120

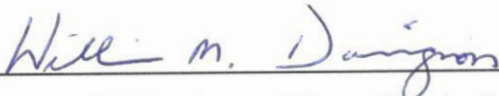
Classified by S.I.C. Number(s): N/A

for the discharge of ground water and other wastes generated during Remedial Action construction and implementation into the City of North Tonawanda Sewerage System.

This permit is granted in accordance with an application filed in the offices of the Water/Wastewater Superintendent located at 830 River Road, and in conformity with specifications and other required data submitted in support of the above named application, all of which are filed with and considered part of this permit. This permit is also granted in accordance with discharge limitations and requirements, monitoring and reporting requirements, and all other conditions set forth in Parts I and II hereof.

Effective this 31st day of March, 2016

To expire the 1st day of April, 2019



William M. Davignon, Water Works Superintendent

Signed this 11th day of March, 2016

PART I. SPECIFIC CONDITIONS**A. DISCHARGE LIMITATIONS AND MONITORING REQUIREMENTS**

During the period beginning the effective date of this permit and lasting until the expiration date, discharge from the permitted facility outfall(s) shall be limited and monitored by the permittee as specified below (Refer to attached map for sampling and monitoring sites).

Sample Point	Parameter	Discharge Limitations mg/l except pH Daily Max.	Sampling Period	Sampling Type
001	Total Flow		1 Sampling Day Monthly	continuous
	pH	Monitor Only	1 Sampling Day Monthly	grab
	Aluminum	2.0	1 Sampling Day semi-annual	24 hr comp.
	Lead	4.6	1 Sampling Day semi-annual	24 hr comp.
	Iron	10	1 Sampling Day semi-annual	24 hr comp.
	Magnesium	Monitor Only	1 Sampling Day semi-annual	24 hr comp.
	Sodium	Monitor Only	1 Sampling Day semi-annual	24 hr comp.
	BOD	Monitor Only	1 Sampling Day semi-annual	24 hr comp.
	Total Suspended Solids	Monitor Only	1 Sampling Day semi-annual	24 hr comp.

PART I. SPECIFIC CONDITIONS**B. DISCHARGE MONITORING AND REPORTING REQUIREMENTS**

During the period beginning the effective date of this permit and lasting until the expiration date, discharge monitoring results shall be summarized and reported by the permittee no later than the days specified below.

Sample Point	Parameter	Initial Monitoring Report	Subsequent Monitoring Reports
001	Total Flow	January 31, 2007	Semi-annual
	Lead	January 31, 2007	Semi-annual
	Iron	January 31, 2007	Semi-annual
	Magnesium	January 31, 2007	Semi-annual
	Sodium	January 31, 2007	Semi-annual
	pH	January 31, 2007	Semi-annual
	BOD	January 31, 2007	Semi-annual
	Total Suspended Solids	January 31, 2007	Semi-annual

PART I. SPECIFIC CONDITIONS

C. SPECIAL REQUIREMENTS

- 1) This permit is written for a duration of three (3) years. Upon renewal of this permit, all parameters will be re-evaluated to develop a parameter list based on chemical concentrations present in the extracted groundwater.
- 2) Frequency of monitoring is to be re-evaluated yearly.
- 3) All monitoring reports (initial and subsequent), are to be received by the Superintendent, no later than thirty (30) days after receipt of validated data.
- 4) It is required that the Permittee have a Site Operations Manual available at all times. All emergency phone numbers must be listed in an appropriate place for easy access by operations personnel. The Permittee shall not discharge into the City of North Tonawanda sewerage treatment works during WWTP overflow conditions. The Permittee is required to cease all pumping operations upon verbal request of the North Tonawanda Water/Wastewater Superintendent or his designee. Pumping operations shall not recommence until approval by the North Tonawanda Water/Wastewater Superintendent or his designee.
- 5) Analysts are required to use GC/MS method detection limits for most organics (if GC/MS is appropriate); GC/ECD for PCB's/Pesticides and GF method detection limits for metals (where GF is appropriate), as contained in attachment 5 of the NYSDEC TOGs 1.3.8 – New Discharges to Publicly Owned Treatment Works – dated 10/26/94.

APPENDIX B

WATER LEVEL RECORDS

WATER LEVEL RECORD

PROJECT NAME: *NIAGARA COUNTY
REFUSE SITE*

LOCATION: Wheatfield, New York

DATE: 07/10/17
(MM DD YY)

CREW MEMBERS: Tony Manns

Observation Well	Time of Measurement	Top of Casing Elevation A	Depth to Water B	Water Level Elevation A-B
		feet	feet	feet
EAST "A"	0939	598.93	27.08	571.85
EAST "B"	0933	596.23	Dry	596.23
EAST "C"	0923	598.69	18.51	580.18
EAST "D"	0948	593.20	16.09	577.11
NCR-3S	0911	579.60	4.86	574.74
NCR-4S	0928	577.88	3.89	573.99
NCR-5S	0904	579.34	Dry	579.34
NCR-13S	0845	577.15	7.95	569.20

WET WELLS

Wet Well	Time of Measurement	Total Flow	Depth of Water
WW A	0850		2' 10"
WW B	0930		2' 11"
WW C	0918		2' 9"
WW D	0853		3' 2"

Total System Flow	Time of Measurement
13920000	0843

Water Level Meter: NF08289

FP-3D

WATER LEVEL RECORD

PROJECT NAME: *NIAGARA COUNTY
REFUSE SITE*

LOCATION: Wheatfield, New York

DATE: 08/15/17
(MM DD YY)

CREW MEMBERS: Tony Manns

Observation Well	Time of Measurement	Top of Casing Elevation A	Depth to Water B	Water Level Elevation A-B
		feet	feet	feet
EAST "A"	1205	598.93	27.94	570.99
EAST "B"	1212	596.23	Dry	596.23
EAST "C"	1140	598.69	18.36	580.33
EAST "D"	1221	593.20	15.98	577.22
NCR-3S	1134	579.60	5.36	574.24
NCR-4S	1155	577.88	3.88	574.00
NCR-5S	1119	579.34	10.21	569.13
NCR-13S	1105	577.15	Dry	577.15

WET WELLS

Wet Well	Time of Measurement	Total Flow	Depth of Water
WW A	1045		3' 4"
WW B	1157		3' 3"
WW C	1138		2' 9"
WW D	1110		2' 11"

Total System Flow	Time of Measurement
014256000	1047

Water Level Meter: NF08289

FP-3D

WATER LEVEL RECORD

PROJECT NAME: *NIAGARA COUNTY
REFUSE SITE*

LOCATION: Wheatfield, New York

DATE: 09/06/17
(MM DD YY)

CREW MEMBERS: Tony Manns

Observation Well	Time of Measurement	Top of Casing Elevation A	Depth to Water B	Water Level Elevation A-B
		feet	feet	feet
EAST "A"	1036	598.93	26.91	572.02
EAST "B"	1044	596.23	Dry	596.23
EAST "C"	1018	598.69	21.33	577.36
EAST "D"	1014	593.20	15.81	577.39
NCR-3S	1004	579.60	5.84	573.76
NCR-4S	1023	577.88	3.79	574.09
NCR-5S	0955	579.34	10.28	569.06
NCR-13S	0944	577.15	7.76	569.39

WET WELLS

Wet Well	Time of Measurement	Total Flow	Depth of Water
WW A	0939		3' 7"
WW B	1027		3' 3"
WW C	1008		3' 0"
WW D	0950		2' 9"

Total System Flow	Time of Measurement
014517000	0934

Water Level Meter: NF07164

APPENDIX C
MONTHLY INSPECTION LOGS

MONTHLY INSPECTION LOG

PROJECT NAME: Niagara County Refuse Site

LOCATION: Wheatfield, NY

DATE: 07/25/17
(MM DD YY)INSPECTOR(S): Tony Manns

<i>Item</i>	<i>Inspect For</i>	<i>Action Required</i>	<i>Comments</i>
1 Perimeter collection System/Off-Site Forcemain			
<input checked="" type="checkbox"/>	Manholes	- cover on securely	None
		- condition of cover	None
		- condition of inside of manhole	None
		- flow conditions	None
<input checked="" type="checkbox"/>	Wet Wells	- cover on securely	None
		- condition of cover	None
		- condition of inside of wet well	None
2 Landfill Cap			
<input checked="" type="checkbox"/>	Vegetated Soil Cover	- erosion	None
		- bare areas	None
		- washouts	None
		- leachate seeps	None
		- length of vegetation	None
		- dead/dying vegetation	None

MONTHLY INSPECTION LOG

PROJECT NAME: Niagara County Refuse Site

LOCATION: Wheatfield, NY

DATE: 07/25/17
(MM DD YY)INSPECTOR(S): Tony Manns

<i>Item</i>	<i>Inspect For</i>	<i>Action Required</i>	<i>Comments</i>
2 Landfill Cap (continued)			
<input checked="" type="checkbox"/>	Access Roads	- bare areas, dead/dying veg.	None
<input checked="" type="checkbox"/>		- erosion	None
<input checked="" type="checkbox"/>		- potholes or puddles	None
<input checked="" type="checkbox"/>		- obstruction	None
3 Wetlands (Area "F")			
<input checked="" type="checkbox"/>		- dead/dying vegetation	None
<input checked="" type="checkbox"/>		- change in water budget	None
<input checked="" type="checkbox"/>		- general conditions of wetlands	None
4 Other Site Systems			
<input checked="" type="checkbox"/>	Perimeter Fence	- integrity of fence	None
<input checked="" type="checkbox"/>		- integrity of gates	None
<input checked="" type="checkbox"/>		- integrity of locks	None
<input checked="" type="checkbox"/>		- placement and condition of signs	None

MONTHLY INSPECTION LOG

PROJECT NAME: Niagara County Refuse Site

LOCATION: Wheatfield, NY

DATE: 07/25/17
(MM DD YY)INSPECTOR(S): Tony Manns

<i>Item</i>	<i>Inspect For</i>	<i>Action Required</i>	<i>Comments</i>
4 Other Site Systems (continued)			
<input checked="" type="checkbox"/> Drainage Ditches/	- sediment buildup	<u>None</u>	<u>None</u>
<input checked="" type="checkbox"/> Swale Outlets	- erosion	<u>None</u>	<u>None</u>
<input checked="" type="checkbox"/>	- condition of erosion protection	<u>None</u>	<u>None</u>
<input checked="" type="checkbox"/>	- flow obstructions	<u>None</u>	<u>None</u>
<input checked="" type="checkbox"/>	- dead/dying vegetation	<u>None</u>	<u>None</u>
<input checked="" type="checkbox"/>	- cable concrete/gabion mats and riprap	<u>None</u>	<u>None</u>
<input checked="" type="checkbox"/> Culverts	- sediment build-up	<u>None</u>	<u>None</u>
<input checked="" type="checkbox"/>	- erosion	<u>None</u>	<u>None</u>
<input checked="" type="checkbox"/>	- condition of erosion protection	<u>None</u>	<u>None</u>
<input checked="" type="checkbox"/>	- flow obstructions	<u>None</u>	<u>None</u>
<input checked="" type="checkbox"/> Gas Vents	- intact/damage	<u>None</u>	<u>None</u>
<input checked="" type="checkbox"/> Wells	- locks secure	<u>None</u>	<u>None</u>

MONTHLY INSPECTION LOG

PROJECT NAME: Niagara County Refuse Site

LOCATION: Wheatfield, NY

DATE: 08/15/17
(MM DD YY)INSPECTOR(S): Tony Manns

<i>Item</i>	<i>Inspect For</i>	<i>Action Required</i>	<i>Comments</i>
1 Perimeter collection System/Off-Site Forcemain			
<input checked="" type="checkbox"/> <input checked="" type="checkbox"/> <input checked="" type="checkbox"/> <input checked="" type="checkbox"/>	Manholes	- cover on securely	None
		- condition of cover	None
		- condition of inside of manhole	None
		- flow conditions	None
<input checked="" type="checkbox"/> <input checked="" type="checkbox"/> <input checked="" type="checkbox"/>	Wet Wells	- cover on securely	None
		- condition of cover	None
		- condition of inside of wet well	None
2 Landfill Cap			
<input checked="" type="checkbox"/> <input checked="" type="checkbox"/> <input checked="" type="checkbox"/> <input checked="" type="checkbox"/> <input checked="" type="checkbox"/> <input checked="" type="checkbox"/> <input checked="" type="checkbox"/>	Vegetated Soil Cover	- erosion	None
		- bare areas	None
		- washouts	None
		- leachate seeps	None
		- length of vegetation	None
		- dead/dying vegetation	None
			None

MONTHLY INSPECTION LOG

PROJECT NAME: Niagara County Refuse Site

LOCATION: Wheatfield, NY

DATE: 08/15/17
(MM DD YY)INSPECTOR(S): Tony Manns

<i>Item</i>	<i>Inspect For</i>	<i>Action Required</i>	<i>Comments</i>
2 Landfill Cap (continued)			
<input checked="" type="checkbox"/> <input checked="" type="checkbox"/> <input checked="" type="checkbox"/> <input checked="" type="checkbox"/>	Access Roads	- bare areas, dead/dying veg.	None
		- erosion	None
		- potholes or puddles	None
		- obstruction	None
3 Wetlands (Area "F")			
<input checked="" type="checkbox"/> <input checked="" type="checkbox"/> <input checked="" type="checkbox"/>		- dead/dying vegetation	None
		- change in water budget	None
		- general conditions of wetlands	None
4 Other Site Systems			
<input checked="" type="checkbox"/> <input checked="" type="checkbox"/> <input checked="" type="checkbox"/> <input checked="" type="checkbox"/>	Perimeter Fence	- integrity of fence	None
		- integrity of gates	None
		- integrity of locks	None
		- placement and condition of signs	None

MONTHLY INSPECTION LOG

PROJECT NAME: Niagara County Refuse Site

LOCATION: Wheatfield, NY

DATE: 08/15/17
(MM DD YY)INSPECTOR(S): Tony Manns

<i>Item</i>	<i>Inspect For</i>	<i>Action Required</i>	<i>Comments</i>
4 Other Site Systems (continued)			
<input checked="" type="checkbox"/> Drainage Ditches/	- sediment buildup	<u>None</u>	<u>None</u>
<input checked="" type="checkbox"/> Swale Outlets	- erosion	<u>None</u>	<u>None</u>
<input checked="" type="checkbox"/>	- condition of erosion protection	<u>None</u>	<u>None</u>
<input checked="" type="checkbox"/>	- flow obstructions	<u>None</u>	<u>None</u>
<input checked="" type="checkbox"/>	- dead/dying vegetation	<u>None</u>	<u>None</u>
<input checked="" type="checkbox"/>	- cable concrete/gabion mats and riprap	<u>None</u>	<u>None</u>
<input checked="" type="checkbox"/> Culverts	- sediment build-up	<u>None</u>	<u>None</u>
<input checked="" type="checkbox"/>	- erosion	<u>None</u>	<u>None</u>
<input checked="" type="checkbox"/>	- condition of erosion protection	<u>None</u>	<u>None</u>
<input checked="" type="checkbox"/>	- flow obstructions	<u>None</u>	<u>None</u>
<input checked="" type="checkbox"/> Gas Vents	- intact/damage	<u>None</u>	<u>None</u>
<input checked="" type="checkbox"/> Wells	- locks secure	<u>None</u>	<u>None</u>

MONTHLY INSPECTION LOG

PROJECT NAME: Niagara County Refuse Site

LOCATION: Wheatfield, NY

DATE: 09/20/17
(MM DD YY)INSPECTOR(S): Tony Manns

Item	Inspect For	Action Required	Comments
1 Perimeter collection System/Off-Site Forcemain			
<input checked="" type="checkbox"/> Manholes	- cover on securely	None	None
<input checked="" type="checkbox"/>	- condition of cover	None	None
<input checked="" type="checkbox"/>	- condition of inside of manhole	None	None
<input checked="" type="checkbox"/>	- flow conditions	None	None
<input checked="" type="checkbox"/> Wet Wells	- cover on securely	None	None
<input checked="" type="checkbox"/>	- condition of cover	None	None
<input checked="" type="checkbox"/>	- condition of inside of wet well	None	None
2 Landfill Cap			
<input checked="" type="checkbox"/> Vegetated Soil Cover	- erosion	None	None
<input checked="" type="checkbox"/>	- bare areas	None	None
<input checked="" type="checkbox"/>	- washouts	None	none
<input checked="" type="checkbox"/>	- leachate seeps	None	None
<input checked="" type="checkbox"/>	- length of vegetation	None	None
<input checked="" type="checkbox"/>	- dead/dying vegetation	None	None

MONTHLY INSPECTION LOG

PROJECT NAME: Niagara County Refuse Site

LOCATION: Wheatfield, NY

DATE: 09/20/17
(MM DD YY)INSPECTOR(S): Tony Manns

<i>Item</i>	<i>Inspect For</i>	<i>Action Required</i>	<i>Comments</i>
2 Landfill Cap (continued)			
<input checked="" type="checkbox"/> Access Roads	- bare areas, dead/dying veg.	<u>None</u>	<u>None</u>
<input checked="" type="checkbox"/>	- erosion	<u>None</u>	<u>None</u>
<input checked="" type="checkbox"/>	- potholes or puddles	<u>None</u>	<u>None</u>
<input checked="" type="checkbox"/>	- obstruction	<u>None</u>	<u>None</u>
3 Wetlands (Area "F")			
<input checked="" type="checkbox"/>	- dead/dying vegetation	<u>None</u>	<u>None</u>
<input checked="" type="checkbox"/>	- change in water budget	<u>None</u>	<u>None</u>
<input checked="" type="checkbox"/>	- general conditions of wetlands	<u>None</u>	<u>None</u>
4 Other Site Systems			
<input checked="" type="checkbox"/> Perimeter Fence	- integrity of fence	<u>None</u>	<u>None</u>
<input checked="" type="checkbox"/>	- integrity of gates	<u>None</u>	<u>None</u>
<input checked="" type="checkbox"/>	- integrity of locks	<u>Replaced lock on main gate.</u>	<u>Lock kept sticking.</u>
<input checked="" type="checkbox"/>	- placement and condition of signs	<u>None</u>	<u>None</u>

MONTHLY INSPECTION LOG

PROJECT NAME: Niagara County Refuse Site

LOCATION: Wheatfield, NY

DATE: 09/20/17
(MM DD YY)INSPECTOR(S): Tony Manns

<i>Item</i>	<i>Inspect For</i>	<i>Action Required</i>	<i>Comments</i>
4 Other Site Systems (continued)			
<input checked="" type="checkbox"/> Drainage Ditches/	- sediment buildup	None	None
<input checked="" type="checkbox"/> Swale Outlets	- erosion	None	None
<input checked="" type="checkbox"/>	- condition of erosion protection	None	None
<input checked="" type="checkbox"/>	- flow obstructions	Pulled some dead sticks out of ditch.	A few stick were blocking flow.
<input checked="" type="checkbox"/>	- dead/dying vegetation	None	None
<input checked="" type="checkbox"/>	- cable concrete/gabion mats and riprap	None	None
<input checked="" type="checkbox"/> Culverts	- sediment build-up	None	None
<input checked="" type="checkbox"/>	- erosion	None	None
<input checked="" type="checkbox"/>	- condition of erosion protection	None	None
<input checked="" type="checkbox"/>	- flow obstructions	None	None
<input checked="" type="checkbox"/> Gas Vents	- intact/damage	None	None
<input checked="" type="checkbox"/> Wells	- locks secure	None	None

APPENDIX D
MAINTENANCE RECORD LOGS

MAINTENANCE RECORD LOG

PROJECT NAME: Niagara County Refuse Site

LOCATION: Wheatfield, New York

CREW MEMBERS: Tony Manns

1. Date 7/18/2017

Time 1015

Scheduled/Unscheduled: Scheduled

Type of Maintenance Performed: Wet Well D Pump maintenance

2. Company Performing Maintenance GHD

Name: Tony Manns

Address: 2055 Niagara Falls blvd

Niagara Falls, NY 14304

Contact Name: (716) 818-6241

3. Methods Used: Removed pump, checked pump, cleaned pump, replaced pump

Description of Material Removed: None

Problems/Comments: None

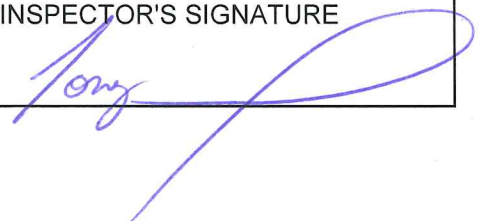
DATE 7/18/2017

INSPECTOR

INSPECTOR'S SIGNATURE

FORM 2

Tony Manns



MAINTENANCE RECORD LOG

PROJECT NAME: Niagara County Refuse Site

LOCATION: Wheatfield, New York

CREW MEMBERS: Tony Manns

1. Date 9/20/2017

Time 1000

Scheduled/Unscheduled: Scheduled

Type of Maintenance Performed: Removed some broken branches from the ditch.

2. Company Performing Maintenance GHD

Name: Tony Manns

Address: 2055 Niagara Falls blvd

Niagara Falls, NY 14304

Contact Name: (716) 818-6241

3. Methods Used: Removed them and threw them into the woods.

Description of Material Removed: Dead tree limbs.

Problems/Comments: None

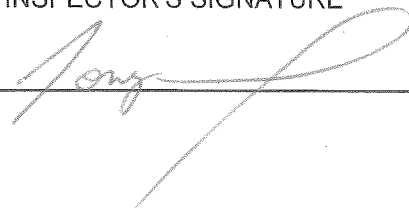
DATE 9/20/2017

INSPECTOR

INSPECTOR'S SIGNATURE

FORM 2

Tony Manns



APPENDIX E

COMPACT DISK CONTAINING REPORT