



FACT SHEET

State Superfund Program

Receive Site Fact Sheets by *Email*. See "For More Information" to Learn How.

Site Name: Old Upper Mountain Road Site

February 2012

DEC Site #: 932112; Operable Unit 03 *

Site Address: Old Upper Mountain Road, Lockport, NY 14094

Remedy Proposed for State Superfund Site; Public Comment Period and Public Meeting Announced

Public Meeting, Thursday, 3/15/2012 at 6:30 PM

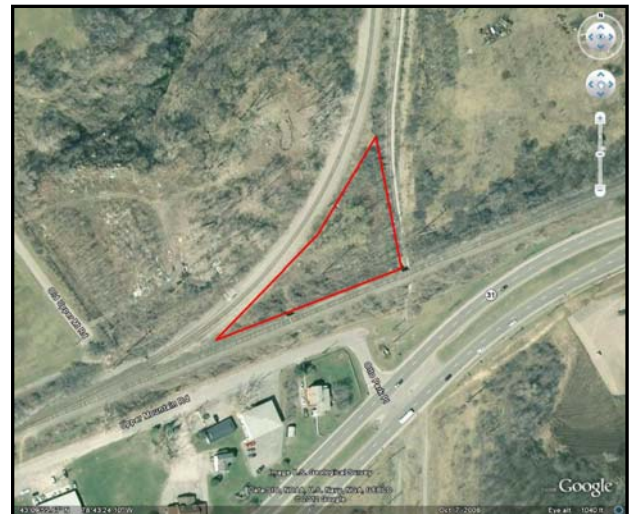
Lockport City Hall

NYSDEC invites you to a public meeting to discuss the remedy proposed for the site. You are encouraged to provide comments at the meeting, and during the 30-day comment period described in this fact sheet.

Introduction

The public is invited to comment on a remedy proposed by the New York State Department of Environmental Conservation (NYSDEC or Department) related to Operable Unit (OU) 03 of the Old Upper Mountain Road Site ("Site"), which is located on Otto Park Place (see map) in Lockport, Niagara County. Under the proposed plan, OU 03 would be capped with a clean soil cover. Use restrictions and long term maintenance and monitoring activities would also be required.

Documents related to the cleanup of this Site can be found at the location(s) identified below under "Where to Find Information."



How to Comment

NYSDEC is accepting written comments about the proposed plan for 30 days, from February 27, 2012 through March 27, 2012. The proposed plan is available for review at the location(s) identified below under "Where to Find Information." Please submit comments to the project manager listed under Project Related Questions in the "Who to Contact" area below.

Highlights of the Proposed Remedial Action Plan

The Site is listed as a Class "2" site in the State Registry of Inactive Hazardous Waste Sites (list of State Superfund sites). A Class 2 site represents a significant threat to public health or the environment; action is required.

*Operable Unit: An administrative term used to identify a portion of a site that can be addressed by a distinct investigation and/or cleanup approach. An operable unit can receive specific investigation, and a particular remedy may be proposed

The remedy proposed for the site includes:

1. A remedial design program to provide the details necessary for the construction, operation, maintenance, and monitoring of the remedial program;
2. Capping of Operable Unit 03 with a clean soil cover;
3. Institutional controls in the form of an Environmental Easement, use restrictions and fencing;
4. Site management that includes periodic certification that the use is consistent with those restrictions.

NYSDEC developed the proposed remedy after reviewing the “remedial investigation” (RI) for the Site and evaluating the remedial options in the “feasibility study” (FS) submitted under New York’s State Superfund Program.

Next Steps

NYSDEC will consider public comments as it finalizes the remedy for the site. The selected remedy will be described in a document called a "Record of Decision" that will explain why the remedy was selected and respond to public comments. The project then moves to designing and performing the cleanup action to address the site contamination.

NYSDEC will keep the public informed throughout the investigation and cleanup of the site.

Site Background

The Old Upper Mountain Road Site consists of approximately 7 acres near the intersection of NY State Routes 31 and 93 in the City and Town of Lockport, Niagara County, New York. The Site is located on a relatively flat-lying plateau separated by the Somerset Railroad. The topography slopes steeply into The Gulf, and there is an approximate 80-foot difference in elevation between the site and the base of the ravine. A portion of this ravine underlies the site and has been filled in with waste material.

The Site has been subdivided into three Operable Units (OUs) defined as follows: OU 01: Landfill - Old Upper Mountain Road Parcel, OU 02: Gulf Creek Sediment, and OU 03: Landfill - Otto Park Place Parcel. OUs 01 and 03 are the former landfill that is separated into two parcels by the Somerset Railroad. OU 01 is the parcel north of the Somerset Railroad, while OU 03 is the parcel located between the Somerset and CSX railroads, and an abandoned railspur. OU 02 consists of approximately 4,400 linear feet of contaminated Gulf Creek sediment between the site and Niagara Street.

The Site was reportedly operated as a municipal landfill by the City of Lockport from 1921 through the 1950's. Incinerator ash from garbage and other wastes was apparently dumped at the landfill and then pushed into the ravine.

In August 2009 the NYSDEC began a State Superfund RI/FS at the site. Initial field activities began in November 2009 with the clearing of vegetation from OUs 01 and 03, the collection of sediment and surface water samples from OU 02, and the initial topographic survey. Six monitoring wells were installed at OUs 01 and 03 in December 2009, and sampled in February and August 2010. Numerous test pits and soil borings were completed at OUs 01 and 03 in May 2010, along with the collection of additional sediment samples from OU 02. Additional sediment and surface water samples were collected from Gulf Creek in August 2010 as part of the Supplemental RI. The RI report was approved in May 2011, with the Supplemental RI report approved in October 2011.

FOR MORE INFORMATION

Where to Find Information

Project documents are available at the following location(s) to help the public stay informed.

Lockport Public Library
23 East Avenue
Lockport, NY 14094
(716) 433-5935

Department of Environmental Conservation
Region 9 Office
Division of Environmental Remediation
270 Michigan Ave
Buffalo, NY 14203-2915
(716)851-7220

Abbreviated versions of project documents are also available on the NYSDEC website at:
<http://www.dec.ny.gov/chemical/37554.html>.

Who to Contact

Comments and questions are always welcome and should be directed as follows:

Project Related Questions

Glenn May
Department of Environmental Conservation
Division of Environmental Remediation
270 Michigan Ave
Buffalo, NY 14203-2915
716-851-7220
Region9@gw.dec.state.ny.us

Site Related Health Questions

Matthew Forcucci, Public Health Specialist
NYSDOH
584 Delaware Avenue
Buffalo, NY 14202
(716) 847-4501
bee@health.state.ny.us

Receive Site Fact Sheets by Email

Have site information such as this fact sheet sent right to your email inbox. NYSDEC invites you to sign up with one or more contaminated sites county email listservs available at the following web page:
<http://www.dec.ny.gov/chemical/61092.html>. It's quick, it's free, and it will help keep you *better informed*.



As a listserv member, you will periodically receive site-related information/announcements for all contaminated sites in the county(ies) you select.

You may continue also to receive paper copies of site information for a time after you sign up with a county listserv, until the transition to electronic distribution is complete.

Note: Please disregard if you already have signed up and received this fact sheet electronically.