

**LaBELLA**

LaBella Associates, P.C.

300 State Street

Rochester, New York 14614

## **Appendix 6**

### **Citizen Participation Plan (CPP)**

# **CITIZEN PARTICIPATION PLAN**

**for**

## **Former Photech Imaging Site**

**NYSDEC Site #B-00016-8  
1000 Driving Park Avenue  
Rochester, NY  
City of Rochester  
Monroe County, New York**

**November 2009**

**Prepared By:**

**City of Rochester  
Department of Environmental Services  
Division of Environmental Quality  
30 Church Street  
Rochester, New York 14614-1278**

# **PREFACE**

## **ENVIRONMENTAL RESTORATION PROJECT**

This Citizen Participation Plan has been developed for the Former Phototech Imaging site under New York State's Environmental Restoration Projects Program (ERP).

Brownfields are abandoned, idled, or under-used properties where expansion or redevelopment is complicated by real or perceived environmental contamination. They typically are former industrial or commercial properties where operations may have resulted in environmental contamination. They often pose not only environmental, but legal and financial burdens on communities. Left vacant, contaminated sites can diminish the property value of surrounding sites and potentially threaten the economic viability of adjoining properties.

## **RESOURCES AVAILABLE FOR COMMUNITY REDEVELOPMENT**

In an effort to spur the cleanup and redevelopment of brownfields, Governor Pataki proposed, and New Yorkers approved, a \$200 million Environmental Restoration Fund as part of the \$1.75 billion Clean Water/Clean Air Bond Act of 1996 (1996 Bond Act). Under the Program, the State provides grants to municipalities to reimburse up to 90 percent of eligible costs for site investigation and remediation activities. Only New York State municipalities are eligible. The term "municipality" includes counties, cities, towns and villages as well as local public authorities, public benefit corporations, school and supervisory districts and improvement districts. The term also includes a municipality acting in partnership with a community based organization.

Once remediated, the property may then be reused for commercial, industrial, residential or public use. In addition, the municipality and all successors in title, lessees, and lenders are released from remedial liability for hazardous substances that were on the property prior to the grant. The State indemnifies these same persons in the amount of any settlements/judgments obtained regarding an action relating to hazardous substances that were on the property prior to the grant.

## **SECTION 1: INTRODUCTION**

The City of Rochester and the New York State Department of Environmental Conservation (NYSDEC), in cooperation with the New York State Department of Health (NYSDOH), are committed to informing and involving the public during the process to develop the Remedial Design for the Former Phototech Imaging site. The Former Phototech Imaging Systems, Inc. site is located at 1000 Driving Park Avenue in the City of Rochester, New York, hereinafter referred to as the “Site”. The Site is comprised of 12.5 acres of land that include a total of 15 buildings comprising approximately 108,000 square feet of space. The Site is located in a commercial/industrial zoned area on the north side of Driving Park Avenue in the northwestern quadrant of the City of Rochester, New York (see Attachment 1).

The City of Rochester is in the process of designing the Remedial Action Plan (RAP) which will include the abatement of all asbestos containing materials, decommissioning of all building systems, and the demolishing all of the buildings on the Site. These activities are expected to be completed in the spring and summer of 2010. In addition, a Design Phase Investigation will be completed to facilitate the completion of a RAP to specifically address soil and groundwater impacts identified at the Site. The Design Phase Investigation will commence in the summer and fall of 2010.

This Citizen Participation Plan (CPP) has been prepared by the City of Rochester’s Department of Environmental Services, Division of Environmental Quality specifically for this site. Definitions of some common terms used in the Remedial Design process may be found in Appendix 1.

The Design Phase Investigation is a detailed study to determine how much contamination there is, how far it extends, and potential threats to public health and the environment. Using information developed during the Design Phase Investigation a RAP will be developed to evaluate possible ways to cleanup the Site.

The CPP seeks to assure an open process for the interested and possibly affected public. This includes public officials at all levels, citizen interest groups, commercial interests, individuals in the area of the Site, and the media. These parties can be a part of the decision-making process for this site, and need to be informed about on-site activities. It also identifies locations where these parties can obtain additional information about the remedial program for this site. Specific opportunities for public and community input into the decision-making process are indicated.

The CPP is a working document. It can be enhanced to accommodate major changes in either public attitude, or in the nature and scope of technical activities at the Site. The activities listed below are not intended to be an all-inclusive list, but an outline of possible activities which may be conducted in coordination with the remedial process.

This CPP includes the following information:

- A description of the Site history, indicating possible types of contamination, any past studies, and any previous remedial measures that may have occurred at the Site;

- A description of the proposed Site Investigation/Remedial Design and Remedial Construction.
- Listing of contacts representing the affected and interested public agencies associated with this project;
- Identification of a local repository for information and reports generated during the course of completing the investigation activities; and
- Description of planned citizen participation activities.

## **SECTION 2: SITE LOCATION**

The Former Photech Imaging site is located at 1000 Driving Park Avenue in the City of Rochester, New York. The Site consists of approximately 12.5-acres that include a total of 15 buildings comprising approximately 108,000 square feet of space. The Site is located in a commercial/industrial zoned area on the north side of Driving Park Avenue in the northwestern quadrant of the City of Rochester, New York.

## **SECTION 3: SITE REMEDIAL HISTORY**

The Site was originally developed in 1948 for manufacturing photographic film and paper. Several different companies have owned and operated the facility for photographic paper and film production through 1991. The most recent owner, Photech Imaging Systems, Inc., ceased operations and abandoned the facility in 1991. Under tax foreclosure proceedings, the City of Rochester obtained the property in August 1997. Large amounts of chemicals, wastes, and various supplies and materials were left “as-is” on-site when the facility was abandoned. In 1994, the NYSDEC and the United States Environmental Protection Agency (USEPA) performed a bulk waste and chemical removal action at the Site. This work successfully removed bulk chemicals from the facility; however, residual chemicals remained in some of the on-site buildings. Since the removal action, the buildings have been severely vandalized. As a result, asbestos and chemical residues are suspected to be present in many interior areas of the buildings. Additionally, the roofs have failed on several of the buildings, and a fire in 2004 severely damaged the former warehouse building.

The following investigations have previously been completed at the Site:

- Burn Pit Cleanup – Anecdotal information exists regarding a reported ‘cleanup’ performed by the former owners sometime in the 1970’s or 1980’s. This cleanup reportedly involved the removal and off-site disposal of solid waste from the former retention pond and burn pit area.
- 1986 Site Audit – An independent contractor completed a Site audit in 1986. The audit included a detailed environmental inspection of the plant, a review of waste handling practices, and the completion of a limited number of soil borings, and limited groundwater sampling. The most significant findings of the 1986 audit included:

- The former underground wastewater silver recovery vault located adjacent to the Research and Development Building had not contributed to any soil or groundwater contamination in the immediate area;
  - One of more of the underground fuel tanks leaked into the surrounding soil
  - The underground 500-gallon waste methanol tank piping had failed; and,
  - The facility waste handling practices required upgrading or modification to meet regulatory requirements.
- **Bulk Chemical and Waste Removal Projects** – After closing in 1991, the previous owner of the Photech facility did not perform a facility closure to remove and dispose of chemical material and wastes. As a result, the Photech site contained an assortment of abandoned oxidizers, reactive chemicals, flammable liquids, corrosives, poisons, and shock sensitive chemicals that were stored both inside and outside of facility buildings. Many of these chemical materials were stored in deteriorating containers and in unsafe conditions. Subsequent to the closing of the facility, the NYSDEC completed several small interim remedial measures (IRMs) such as removing and disposing of hazardous wastes and relocating chemical products (i.e., glycols) to a more secure interior staging area.

In 1994, the NYSDEC and the USEPA performed a bulk waste and chemical removal action at the Site. A wide variety of hazardous wastes, process chemicals, and laboratory chemicals stored at the property were removed and shipped off-site for proper disposal. The contents of numerous drums and tanks stored on-site were emptied and/or removed from the Site. This project successfully removed the bulk chemicals from the facility.

#### **SECTION 4: SITE CONTAMINATION**

The City of Rochester has recently completed a Site Investigation/Remedial Alternatives Report (SI/RAR) to determine the nature and extent of any contamination by hazardous and regulated substances at this Environmental Restoration site.

The purpose of the SI was to define the nature and extent of any contamination resulting from previous activities at the Site. The SI/RAR was conducted between November 1998 and May 2005. The field activities and findings of these investigations are described in the SI/RAR report. The following activities were conducted during the SI:

- A Phase I Site Assessment was completed in accordance with American Society for Testing and Materials (ASTM) E 1527-97. This assessment included several interviews with the former Plant Engineer for the Photech facility;
- Conducted an asbestos survey and sampling program inside the buildings. The sampling consisted of 26 wipe samples and 212 bulk samples for asbestos analyses;

- Conducted a building and equipment decontamination survey to assess residual chemical contamination inside the building. The sampling program consisted of 110 wipe samples and 32 bulk samples for chemical analysis;
- Cleaned, removed, and disposed of four aboveground storage tanks;
- Excavated and removed the buried spill containment drum for the former hazardous waste storage area;
- Advanced forty soil borings and ten monitoring wells for analysis of soils and groundwater as well as physical properties of soil and hydrogeological conditions and collected soil and groundwater samples at each of the ten monitoring well locations; and,
- Sampled shallow subsurface soils (0-9" below ground surface) at seventeen locations.

Additionally, as part of the SI, several Interim Remedial Measures (IRMs) were conducted in conjunction with the completion of the SI/RA project. An IRM is conducted at a site when a source of contamination or exposure pathway can be effectively addressed before completion of the SI/RAR.

The object of the IRMs was to mitigate any potential human health and environmental risks related to above ground and underground tanks.

The IRMs included closure of the following four aboveground storage tanks (ASTs):

- Four aboveground storage tanks:
  - A 10,000-gallon steel fuel oil AST
  - A 10,000-gallon virgin methanol AST
  - A 2,500-gallon virgin methanol AST
  - A 2,500-gallon waste methanol AST

All of the ASTs and their associated secondary containment structures were removed and disposed of off-site. Confirmatory soil sample results beneath the ASTs showed no contamination.

In addition to the closure of the ASTs, two suspect underground structures were also targeted for closure:

- Two suspected underground structures:
  - A 500-gallon steel waste chemical tank
  - A concrete vault structure of unknown size

The two suspected underground structures could not be located. Three test pits were excavated identifying a former concrete tank saddle and straps and some associated piping. No tanks or vaults could be located otherwise.

Lastly, one miscellaneous structure was closed as part of the IRM:

- Containment Drum:
  - A small drum container, partially buried, used to collect runoff and drainage from the chemical storage shed structure.

Based on the SI and IRMs results, certain media and areas of the Site require remediation. More complete information can be found in the SI report.

## **SECTION 5: SUMMARY OF PROPOSED REMEDIAL ACTION PLAN**

Manufacturing operations of photographic film and paper have resulted in the disposal of hazardous or regulated substances, including polycyclic aromatic hydrocarbons (PAHs) and metals. These hazardous or regulated substances have contaminated the groundwater and soil at the Site. The NYSDEC has prepared a Proposed Remedial Action Plan (PRAP) that summarizes the investigation and proposes the following remedial alternatives to cleanup the Site for commercial/industrial use:

- Asbestos abatement, building and equipment decontamination, and building demolition;
- A Vector Mitigation Plan will be implemented in order to minimize the presence and negative effects from the displacement of rodents from the on-site structures during demolition;
- A design-phase investigation to further delineate the extent of soil contamination, and to confirm the extent of groundwater contamination;
- Excavation and off-site disposal of contaminated soils;
- Excavation and removal of the silver wastewater recovery system;
- Imposition of institutional controls (restrictions on the property's future use) in the form of an environmental easement to limit the Site to commercial or industrial future use, address residual soil contamination, prohibit the use of groundwater as a source of potable water without necessary treatment as determined by the NYSDOH, and evaluate the potential for vapor intrusion into any future buildings at the Site. A Site Management Plan would be developed to ensure that the removal of any residually contaminated soils in the future is done safely and in compliance with State and Federal regulations; and,
- Implementation of a long-term groundwater monitoring plan to monitor the effectiveness of the remedy.

The Environmental Restoration Record of Decision for the Former Phototech Imaging Site provides additional details about the investigation. Copies of this report can be reviewed at the repositories listed in Section 6.2 of this Citizen Participation Plan.

### **Project Schedule**

The above activities are expected to begin at the Site in November 2009. The demolition of condemned buildings at the Site is expected to begin in November 2009. Asbestos abatement



within the condemned buildings is scheduled to occur from December 2009 through February 2010. IRMs associated with the removal of the former silver recovery system will begin in December 2009. Demolition of the buildings at the Site is scheduled to occur from February 2010 through April 2010. Removal of soil and groundwater at the Site is scheduled to occur from April 2010 through December 2010. A copy of the Project Schedule is included in Attachment 2.

### **Proposed Site Redevelopment**

At the completion of the project the site will be redeveloped consistent with the M-1 Zoning requirements. The conceptual redevelopment includes the construction of a new access road to service three individual development parcels. Each parcel will have a separate structure ranging in size from 60,000 to 90,000 square feet with dedicated asphalt parking lots.

## **SECTION 6: CITIZEN PARTICIPATION ACTIVITIES**

It is the expressed intent of the City of Rochester and the NYSDEC to provide information to the public in a timely, complete, and accurate manner. Towards this end, the City of Rochester has compiled a list of individuals to whom the public can address specific requests for information. These contacts are both local and state public officials and are knowledgeable of the proposed investigative activities. This list of contacts is provided in Table 1, Section 6.1, below.

A local repository has been established at the Maplewood Branch Library, 1111 Dewey Avenue, in addition to the ones established at the NYSDEC Region 8 office at 6274 East Avon-Lima Road. Repositories of information are identified in Section 6.2 below. A copy of the documents relevant to the SI/RAR, including the SI/RAR Work Plan, will be placed in the repositories to allow interested citizens and groups to review these documents.

A Fact Sheet detailing the availability of additional work plans associated with the completion of the Remedial Design or Remedial Construction will be sent out to the residents and other interested parties on the mailing list. The mailing list is presented in the attached Appendix 2. This mailing will include information about the document repositories, the name and address of the City of Rochester Representative, NYSDEC Citizen Participation Specialist, NYSDEC Project Manager and NYS Department of Health contact. Parties who express interest in being placed on or removed from the mailing list will be added or removed as requested.

Additional activities, such as a public meeting and/or Fact Sheet during the Remedial Design or Remedial Construction process will be added as appropriate.

All NYSDEC-approved reports, plans, and fact sheets on this project will be placed in the document repositories for public review. These documents may be distributed more widely, such as to interested local groups, if warranted.

## 6.1 Public Agency Contacts

The City of Rochester has identified individuals knowledgeable of the proposed Remedial Design and Remedial Construction activities. These individuals are identified in Table 1, on the following page.

**Table 1: Public Agency Contacts**

City of Rochester Contacts		
Joseph Biondolillo Project Manager	DIV OF ENVIRONMENTAL QUALITY CITY OF ROCHESTER CITY HALL RM 300B ROCHESTER NY 14614	585-428-6649
NYS Department of Environmental Conservation		
Todd Caffoe NYSDEC Project Manager (Technical Assistance)	NYSDEC REGION 8 OFFICE 6274 EAST AVON-LIMA ROAD AVON, NY 14414-9519	585-226-5350
Bartholomew Putzig NYSDEC DER Regional Engineer (Technical Assistance)	NYSDEC REGION 8 OFFICE 6274 EAST AVON-LIMA ROAD AVON, NY 14414-9519	585-226-5349
New York State Department of Health		
Tamara Girard NYSDOH Project Manager (Technical Assistance)	NYSDOH 547 RIVER STREET TROY, NY 12180-2216	(800) 458-1158 ext. 27860
Monroe County Department of Health		
Joseph Albert (Technical Assistance)	MONROE COUNTY HEALTH DEPARTMENT PO BOX 92832 WESTFALL RD ROCHESTER NY 14692	585-753-5904
Jeffrey Kosmala (Technical Assistance)	MONROE COUNTY HEALTH DEPARTMENT PO BOX 92832 WESTFALL RD ROCHESTER NY 14692	585-753-5470

## 6.2 Document Repositories

The public is encouraged to review the documents related to the site which are available for public review at the following locations:

<p>NYSDEC Region 8 Office 6274 East Avon-Lima Road Avon, NY 14414-9519 Attn: Todd M. Caffoe, P.E. or Lisa LoMaestro Silvestri Phone: 585-226-5350 Hours: M-F, 8:30am - 4:45pm</p>	<p>Maplewood Branch Library 1111 Dewey Avenue Rochester, New York 14613 Attn: Debbie Leary Rochester, NY 14604 Phone: 585-428-8220 Hours: T&amp;Th: 10:00 am - 8:00 pm W&amp;F: 1:00 pm - 6:00 pm M: 1:00 pm - 8:00 pm Sat: Noon - 3:00 pm Sun: Closed</p>
---	--

### 6.3 Mailing List

The attached mailing list includes owners of properties located within the immediate vicinity of the site (**adjoining property owners – need to add this still**). The mailing list of property owners is presented in Appendix 2. The City of Rochester will produce and distribute Fact Sheets providing residents and adjacent business owners with timely information on project status, including notifications of upcoming activities on-site (e.g., fieldwork) or off-site (e.g., public availability sessions). Included in all Fact Sheets will be the list of individuals to be contacted by the public for additional information (see Table 1, above). In addition to property owners, Fact Sheets will be mailed to the elected officials/ representatives, environmental groups, and media listed in Tables 2 and 3 below.

**Table 2: Elected Officials/Representatives and Environmental Groups**

Elected Officials / Public Agency Representatives		
THE HONORABLE KIRSTEN GILLIBRAND UNITED STATES SENATE 100 STATE ST ROOM 3280 ROCHESTER NY 14614	THE HONORABLE CHARLES SCHUMER UNITED STATES SENATE FEDERAL BLDG 100 STATE ST ROCHESTER NY 14614	THE HONORABLE LOUISE M SLAUGHTER US HOUSE OF REPRESENTATIVES 3110 FEDERAL BLDG 100 STATE ST ROCHESTER NY 14614
DAVID F. GANTT NYS ASSEMBLY 74 UNIVERSITY AVENUE ROCHESTER NY 14605	THE HONORABLE JAMES ALES NYS SENATE 220 PACKETTS LANDING FAIRPORT, NY 14450	MAYOR ROBERT DUFFY CITY HALL 30 CHURCH STREET ROCHESTER NY 14614
MAGGIE BROOKS MONROE COUNTY EXECUTIVE COUNTY OFFICE BLDG RM 110 39 W MAIN ST ROCHESTER NY 14614-1476	GLADYS SANTIAGO CITY COUNCIL OFFICE CITY HALL 30 CHURCH STREET ROOM 301 ROCHESTER NY 14614-1265	WILLIAM PRITCHARD CITY COUNCIL OFFICE CITY HALL 30 CHURCH STREET ROOM 301 ROCHESTER NY 14614-1265
MONROE COUNTY SHERIFF PATRICK O'FLYNN MONROE COUNTY PUBLIC SAFETY BLDG CIVIC CTR PLAZA 130 S PLYMOUTH AVE ROCHESTER NY 14614	WAYNE ZYRA MONROE COUNTY CHAIRPERSON 407 COUNTY OFFICE BUILDING 39 WEST MAIN STREET ROCHESTER NY 14614-1476	ROCHESTER FIRE CHIEF FLOYD MADISON ROCHESTER FIRE & RESCUE DEPT 185 EXCHANGE BLVD - SUITE 665 ROCHESTER NY 14614-2277
OFFICE OF THE POLICE CHIEF CIVIC CENTER PLAZA 185 EXCHANGE BLVD ROCHESTER NY 14614	LOUISE HARTSHORN EMC - MONROE COUNTY PO BOX 92832 111 WESTFALL ROAD ROCHESTER NY 14692	MARY LOUIS MEISENZAH MONROE COUNTY EMER MGT SERVICES & PREPAREDNESS 1190 SCOTTSVILLE RD, SUITE 200 ROCHESTER NY 14624
CHARLIE KNAUF MONROE COUNTY WATER QUALITY COORDINATING COMMITTEE 111 WESTFALL ROAD - ROOM 976 ROCHESTER NY 14620	BONNIE PEDRICK-COLES OR CURRENT DIRECTOR MONROE COUNTY PLANNING DEPT 8100 CITY PLACE 50 W MAIN ST ROCHESTER NY 14614	MONROE COUNTY INDUSTRIAL DEVELOPMENT AGENCY - EXECUTIVE DIRECTOR 8100 CITY PLACE 50 W MAIN STREET ROCHESTER NY 14614

HON GLADYS SANTIAGO CITY COUNCIL PRESIDENT 1850 CULVER ROAD ROCHESTER, NY 14609	JOSE CRUZE CITY OF ROCHESTER NORTHWEST NEIGHBORHOOD SERVICE CENTER ADMINISTRATOR 1099 JAY STREET ROCHESTER NY 14606	NYSDOH FLANIGAN SQUARE ROOM 300 547 RIVER ST TROY NY 12180-2216
--	---	--

LISA SILVESTRI NYSDEC REGION 8 OFFICE 6274 EAST AVON-LIMA ROAD AVON, NY 14414-9519	CAPTAIN MIKE VAN DURME NYSDEC REGION 8 OFFICE 6274 EAST AVON-LIMA ROAD AVON, NY 14414-9519	LINDA VERA NYSDEC REGION 8 OFFICE 6274 EAST AVON-LIMA ROAD AVON, NY 14414-9519
HON. ELAINE SPAULL CITY COUNCIL MEMBER 42 WESTMINSTER ROAD ROCHESTER, NY 14607	ART IENTILUCCI - ZONING DIR CITY OF ROCHESTER 30 CHURCH ST ROOM 125B ROCHESTER, NY 14614	CHUCK THOMAS - DIRECTOR CITY OF ROCHESTER PLANNING DEPT 30 CHURCH ST ROOM 100A ROCHESTER, NY 14614
GARY WALKER - DIRECTOR CITY OF ROCHESTER COMMUNICATIONS DEPT 30 CHURCH ST ROOM 202A ROCHESTER, NY 14614		
Environmental Groups/Community Organizations		
CURRENT DIRECTOR CENTER FOR ENVIRONMENTAL INFO 55 ST PAUL ST ROCHESTER, NY 14604-1314	KELLY TRAVERS-MAIN CITIZENS' ENVIRONMENTAL COALITION 33 CENTRAL AVENUE, 3RD FLOOR ALBANY, NEW YORK 12210	ROCHESTER COMM SCIENT INFO CPU 276 766 RIVER CAMPUS STATION ROCHESTER, NY 14627
WILLIAM LARSEN PE ROCHESTER INSTITUTE OF TECH JAMES BOOTH BUILDING 78 LOMB MEMORIAL DRIVE ROCHESTER, NY 14623		

## 6.4 Media Announcements

The City of Rochester and the NYSDEC will make every reasonable effort to ensure that upcoming public meetings are announced in several media, for the purpose of encouraging public participation and comment. Announcements will be initially submitted to visual and sound media for broadcast as “Public Service Announcements” at least 14 calendar days prior to the day of the public meeting.

The media locations identified in Table 3 below represent the minimum media where announcements will be placed.

**Table 3: Media**

NEW DIRECTOR WROC-TV 201 HUMBOLDT STREET ROCHESTER NY 14610	ASSIGNMENT DESK YNN ROCHESTER 71 MT HOPE AVENUE ROCHESTER, NY 14604	ASSIGNMENT DESK WHEC-TV 10 191 EAST AVENUE ROCHESTER NY 14604
ASSIGNMENT EDITOR WOKR TV 13 PO BOX 20555 ROCHESTER NY 14602	NEWS DIRECTOR WXXI-TV 21 280 STATE ST ROCHESTER NY 14614	NEWS DIRECTOR WUHF FOX 31 201 HUMBOLDT ST ROCHESTER NY 14610
NEWS DIRECTOR WHAM-AM 207 MIDTOWN PLAZA PO BOX 40400 ROCHESTER NY 14604	NEWS DIRECTOR WXXI-AM 280 STATE ST ROCHESTER NY 14614	NEWS EDITOR CITY NEWSPAPER 250 N GOODMAN ST ROCHESTER NY 14607

# APPENDIX 1

## Environmental Restoration Program Glossary and Acronyms

---

### GLOSSARY

This glossary defines terms associated with New York's citizen participation program, and important elements of the Brownfield program. Words in **bold** in the definitions are defined elsewhere in the glossary.

**Administrative Record** Part of a site's **Record of Decision** which lists and defines documents used in the development of NYSDEC's decision about selection of a remedial action.

**Availability Session** A scheduled gathering of program staff and members of the public in a casual setting, without a formal presentation or agenda but usually focusing on a specific aspect of a site's remedial process.

**Citizen Participation** A program of planning and activities to encourage communication among people affected by or interested in Brownfield sites and the government agencies responsible for investigating and remediating them.

**Citizen Participation Plan** A document which must be developed at a site's **Site Investigation** stage. A CP Plan describes the citizen participation activities that will be conducted during a site's remedial process.

**Citizen Participation Specialist** A staff member from an NYSDEC central office or regional office who has specialized training and experience to assist a **project manager** and other staff to plan, conduct and evaluate a site-specific citizen participation program.

**Comment Period** A time period for the public to review and comment about various documents and DER actions. For example, a 45-day comment period is provided when DER issues a **Proposed Remedial Action Plan (PRAP)**.

**Contact List** Names, addresses and/or telephone numbers of individuals, groups, organizations, government officials and media affected by or interested in a particular Brownfield site. The size of a contact list and the categories included are influenced by population density, degree of interest in a site, the stage of the remedial process and other factors. It is an important tool needed to conduct outreach activities.

**Division of Environmental Remediation** A major program unit within the New York State Department of Environmental Conservation created to manage the hazardous waste site remedial program, the Brownfield program, and the Voluntary Cleanup program. Staff include: engineers, geologists, chemists, attorneys, citizen participation specialists, environmental program specialists and support staff.

**Document Repository** A file of documents pertaining to a site's remedial and citizen participation programs which is made available for public review. The file generally is maintained in a public building near the Brownfield site to provide access at times and a location convenient to the public.

**Fact Sheet** A written discussion about part or all of a site's remedial process, prepared and provided by DER to the public. A fact sheet may focus on: a particular element of the site's remedial program; opportunities for public involvement; availability of a report or other information, or announcement of a **public meeting** or **comment period**. A fact sheet may be mailed to all or part of a site's **contact list**, distributed at meetings, placed in a **document repository** and/or sent on an "as requested" basis.

**Interim Remedial Measure (IRM)** A discrete action which can be conducted at a site relatively quickly to reduce the risk to people's health and the environment from a well-defined contamination problem. An IRM can involve removing contaminated soil and drums, providing alternative water supplies or securing a site to prevent access.

**New York State Department of Health** Agency within the executive branch of New York State government which: performs health-related inspections at suspected contaminated sites; conducts health assessments to determine potential risk from environmental exposure; reviews Exposure Assessments prepared during the **Site Investigation/Remedial Alternatives Report**; conducts health-related community outreach around sites; and reviews remedial actions to assure that public health concerns are adequately addressed.

**Operable Unit** A discrete part of an entire site that produces a release, threat of release, or pathway of exposure. An Operable Unit can receive specific investigation, and a particular remedy may be proposed. A **Record of Decision** is prepared for each Operable Unit.



**Operation and Maintenance** A period in which remedial action may be conducted following construction at a site (for example, operation of a “pump and treat” system), or which is performed after a remedial action to assure its continued effectiveness and protection of people’s health and the environment. Activities can include site inspections, well monitoring and other sampling.

**Project Manager** An NYSDEC staff member within the **Division of Environmental Remediation** (usually an engineer, geologist or hydro geologist) responsible for the day-to-day administration of remedial activities at, and ultimate disposition of, an Environmental Restoration site. The Project Manager works with legal, health, **citizen participation** and other staff to accomplish site-related goals and objectives.

**Proposed Remedial Action Plan (PRAP)** An analysis by DER of each alternative considered for the remediation of an Environmental Restoration site and a rationale for selection of the alternative it recommends. The PRAP is created based on information developed during the **Site Investigation/Remedial Alternatives Report**. The PRAP is reviewed by the public and other state agencies.

**Public Meeting** A scheduled gathering of **Division of Environmental Remediation** staff with the affected/interested public to give and receive information, ask questions and discuss concerns about a site’s remedial program. Staff from other NYSDEC divisions, legal and health staff, and staff from consultants and a responsible party often also attend. A public meeting, unlike an **availability session**, generally features a formal presentation and a detailed agenda.

**Record of Decision (ROD)** A document which provides definitive record of the cleanup alternative that will be used to remediate an Environmental Restoration site. The ROD is based on information and analyses developed during the **Site Investigation/Remedial Alternatives Report** and public comment.

**Remedial Construction** The physical development, assembly and implementation of the remedial alternative selected to remediate a site. Construction follows the **Remedial Design** stage of a site’s remedial program.

**Remedial Design** The process following finalization of a **Record of Decision** in which plans and specifications are developed for the **Remedial Construction** of the alternative selected to remediate a site.

**Site Investigation/Remedial Alternatives Report (SI/RAR)** The SI fully defines and characterizes the type and extent of contamination at the site. The RAR, which may be conducted during or after the SI, uses information developed during the SI to develop alternative remedial actions to eliminate or reduce the threat of contamination to public health and the environment.

**Responsiveness Summary**      A written summary of major oral and written comments received by DER during a **comment period** about key elements of a site's remedial program, such as a **Proposed Remedial Action Plan**, and DER's response to those comments.

# **APPENDIX 2**

## **MAILING LIST**

**ADJACENT PROPERTIES ARE INCLUDED IN MAILINGS BUT  
HAVE BEEN EXCLUDED FROM THE LISTING IN THIS  
DOCUMENT AS CONFIDENTIAL INFORMATION**

**ADJOINING PROPERTY OWNERS**

CITY OF ROCHESTER – PLAYGROUND  
30 CHURCH STREET  
ROCHESTER, NY 14614

COMIDA – LAGRANGE ASSOCIATES  
100 HOLLEDER PARKWAY  
ROCHESTER, NY 14615

COMIDA – APOLLO TOOL & DIE, INC.  
155 HOLLEDER PARKWAY  
ROCHESTER, NY 14615

DONALD LEE KAUFFMAN  
371 LA GRANGE AVENUE  
ROCHESTER, NY 14615

MICHAEL L. FARACE  
363 LA GRANGE AVENUE  
ROCHESTER, NY 14615

MICHAEL DICARLO & SAMANTHA HURLEY  
355 LA GRANGE AVENUE  
ROCHESTER, NY 14615

COMIDA – MONRO MUFFLER BRAKE  
200 HOLLEDER PARKWAY  
ROCHESTER, NY 14615

THOMAS J. SCHLEICH  
345 LA GRANGE AVENUE  
ROCHESTER, NY 14615

BERNARD A. & DALE L. HECKLE  
335 LA GRANGE AVENUE  
ROCHESTER, NY 14615

PHILIP & IRENE AVERBACH  
327 LA GRANGE AVENUE  
ROCHESTER, NY 14615

BEVERLY MURRELL  
323 LA GRANGE AVENUE  
ROCHESER, NY 14615

MARGUERITE P. MELI  
55 HAVENSHIRE ROAD  
ROCHESTER, NY 14625

ROSE M. BOOTH  
315 LA GRANGE AVENUE  
ROCHESTER, NY 14615

JDTM PROPERTIES, LLC  
726 SECOND STREET, SUITE 3A  
ANNAPOLIS, MD 21403

SHAHROKH S. & DELIA HAKIM  
233 LA GRANGE AVENUE  
ROCHESTER, NY 14613

NEWBERRY ASSOCIATES  
1400 SAINT PAUL STREET  
ROCHESTER, NY 14621

LSON ASSOCIATES  
199 LA GRANGE AVENUE  
ROCHESTER, NY 14613

DORREN FAMILY, LLC  
6130 WEST FLAMINGO ROAD #127  
LAS VEGAS, NV 89103

PINECREST ASSOCIATES, LLC  
1400 SAINT PAUL STREET  
ROCHESTER, NY 14621

DELPHI AUTOMOTIVE SYSTEMS, LLC  
P.O. BOX 5082  
TROY, MI 48007

WILLIAM P. & BEVERLY A. FINNERTY  
P.O. BOX 60557  
ROCHESTER, NY 14606

GREGORY F. BASIL  
22 SHALE DRIVE  
ROCHESTER, NY 14615

FRANK DOMBROWSKI  
4094 MOUNT READ BOULEVARD  
ROCHESTER, NY 14616

WILLIAM MENDRICK  
1400 SAINT PAUL STREET  
ROCHESTER, NY 14621

ERIC VAN DUSEN  
860 DEWEY AVENUE  
ROCHESTER, NY 14613

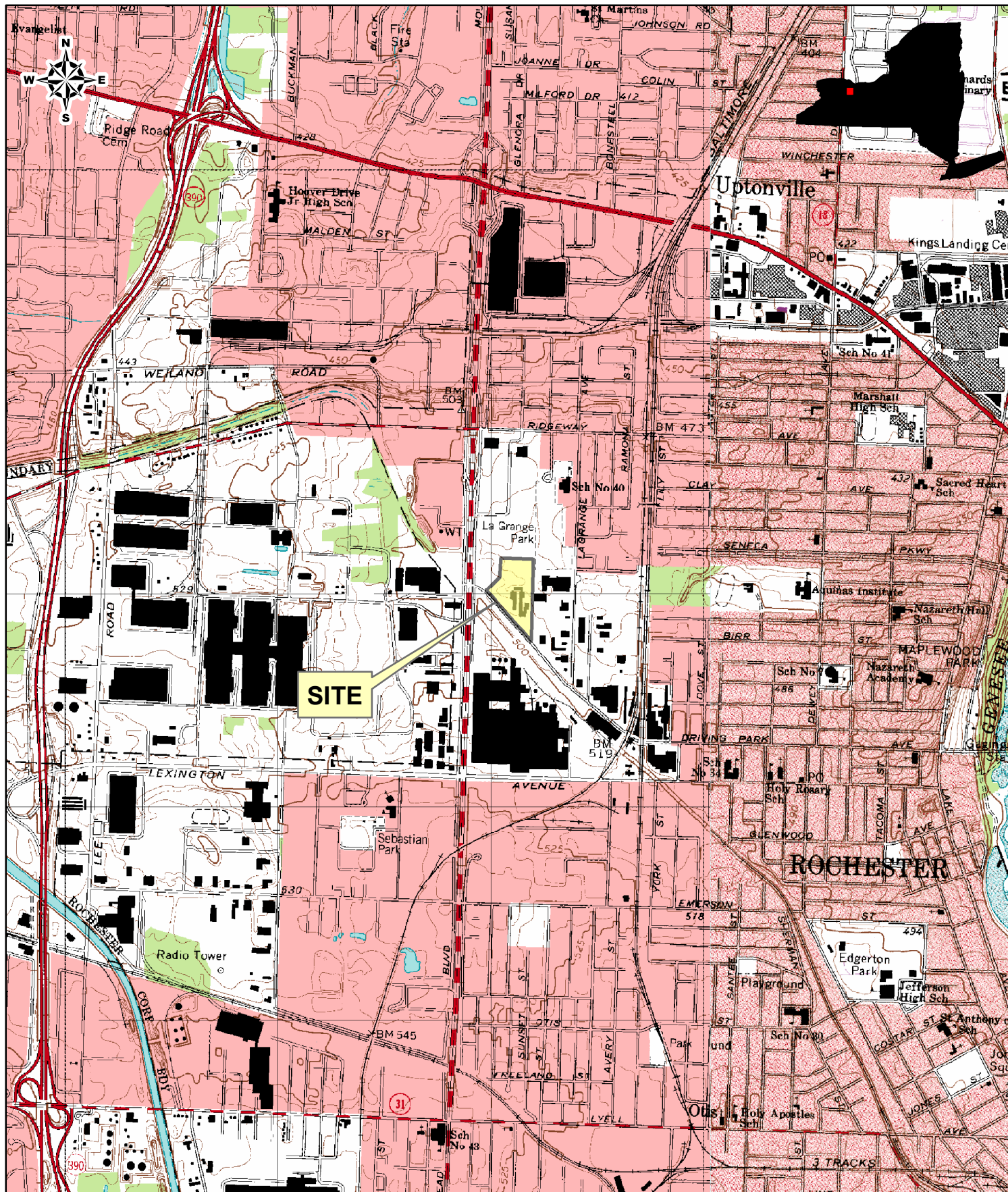
GREG MASON  
328 SENECA PARKWAY  
ROCHESTER, NY 14613

MAPLEWOOD NEIGHBORHOOD ASSOCIATES  
P.O. BOX 13529  
ROCHESTER, NY 14613

Y:\Rochester, City\209288 PHOTECH\Work Plans\Draft CPP 10.27.09.doc

# **Attachment 1**

Y:\Rochester, City\209288 PHOTOCHDrawings\AOC3 RML\LocationMap.mxd - 9/2/2009 @ 10:50:30 AM



PROJECT/DRAWING NUMBER  
**209288**  
**FIGURE 1**

**SITE LOCATION WITH USGS  
7.5 MINUTE TOPO MAP  
ROCHESTER WEST QUAD  
1:24,000**

ISSUED FOR  
REVIEW  
DATE: 9/1/2009  
DESIGNED BY: RCN  
DRAWN BY: RCN  
REVIEWED BY: DEP

CITY OF ROCHESTER DEQ  
SILVER RECOVERY VAULT AREA  
INTERIM REMEDIAL MEASURE  
WORK PLAN

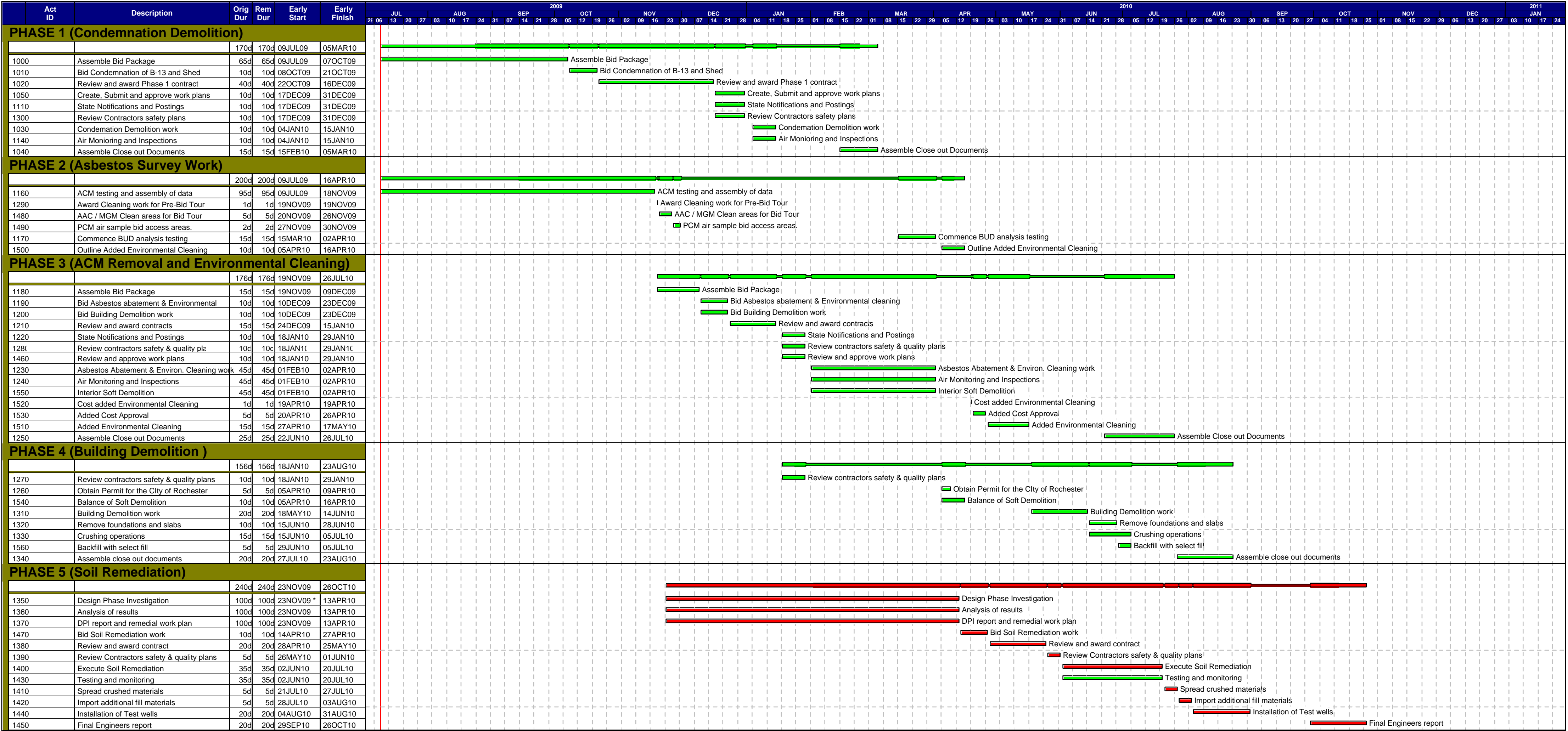
FORMER PHOTECH  
IMAGING FACILITY  
1,000 DRIVING PARK AVENUE  
ROCHESTER, NY

**LABELLA**  
Associates, P.C.

300 STATE STREET  
ROCHESTER, NY 14614  
P: (585) 454-6110  
F: (585) 454-3066  
www.labellapc.com  
COPYRIGHT 2003



## **Attachment 2**



Start date	09JUL09
Finish date	26OCT10
Data date	09JUL09
Run date	11DEC09
Page number	1A
Company name	LeChase Construction Services, LLC
	© Primavera Systems, Inc.

LeChase Construction Services, LLC  
Photec Facility Demolition

- Early bar
- Progress bar
- Critical bar
- Summary bar
- Start milestone point
- Finish milestone point