

**THE DELAVAL PROPERTY  
ENVIRONMENTAL RESTORATION PROGRAM PROJECT**

**Addendum No. 4**

**September 26, 2007**

---

**I. Changes to the Contract Specifications**

1. Bid Form, Pages BF-13 to BF-16:

REPLACE Pages BF-13 through BF-16 of the Bid Form provided in Addendum No. 3 with revised pages included as Attachment A to this addendum. The revised Bid Form reflects the deletion of Item Nos. 41 & 54 and the addition of Item Nos. 41-A, 41-B & 41-C.

2. Section 01270 – Unit Prices:

DELETE Paragraph OO, Item No. 41 and Paragraph AC, Item No. 54.

REPLACE Paragraph YY, Item 51 with the following:

YY. Item No. 51 – Steel Sheet Pile Cut-Off Wall

1. Description: Includes all labor, materials, tools, equipment, supervision, and incidentals required to install cantilevered steel sheet pile cut-off wall at toe of revetment in accordance with the Contract Documents. This item includes all steel sheet piles necessary to complete the installation of the cantilevered steel sheet pile cut-off wall in the locations required per the Contract Drawings. Prior to ordering materials for the Steel Sheet Pile Cut-Off Wall, the Contractor shall perform a survey of the existing river bottom elevations in areas where revetment is scheduled to be constructed and provide the survey data to the Engineer. Also prior to ordering materials for the Steel Sheet Pile Cut-Off Wall, the Contractor shall probe the river bottom to determine the elevation of the top of the rock layer and promptly provide the Engineer with a survey of the location and elevations of the top of rock layer. The Engineer will then determine the areas requiring steel sheet pile cut-off wall. After driving, steel sheet piling which extends above the top of toe stone shall be cut-off and removed from the site.
2. Measurement: The quantity to be paid under this item shall be based upon the actual length of cut-off wall installed, measured in linear feet, as shown on the Contract Drawings, as specified herein, and as ordered by the Engineer.
3. Payment: Full compensation for furnishing all labor, materials, tools, and equipment necessary to install the steel sheet pile cut-off wall.

ADD the following items to the Unit Price section:

OO-A. Item No. 41-A – Anchored Steel Sheet Pile (SSP) Bulkhead with Steel Sheet Pile Anchor Wall

1. Includes all labor, materials, tools, equipment, supervision, and incidentals required to install Anchored Steel Sheet Pile (SSP) Bulkhead with Steel Sheet Pile Anchor Wall in accordance with the Contract Documents. This item includes all steel sheet piles, anchor wall, bulkhead wale system, anchor wall wale system, tie rod assemblies, steel sheet pile coating, structural backfill, concrete cap, and hardware necessary to complete the installation of the anchored SSP bulkhead in the location identified in the Contract Drawings. Prior to ordering materials for the Anchor Wall, the Contractor is to probe and

**THE DELAVAL PROPERTY  
ENVIRONMENTAL RESTORATION PROGRAM PROJECT**

**Addendum No. 4**

**September 26, 2007**

---

locate the top of the rock layer at the location where the anchor wall is scheduled to be installed and promptly provide the Engineer with a survey of the location and elevations of the top of rock layer. The Engineer will then determine and notify the Contractor of the location and quantity of Anchored Steel Sheet Pile (SSP) Bulkhead with Steel Sheet Pile Anchor Wall.

2. Measurement: The quantity to be paid under this item shall be based upon the actual length, measured in linear feet, of Anchored SSP Bulkhead with Steel Sheet Pile Anchor Wall installed, as shown on the Contract Drawings, as specified herein, and as ordered by the Engineer.
  3. Payment: Full compensation for furnishing all labor, materials, tools, and equipment necessary to install Anchored Steel Sheet Pile (SSP) Bulkhead with Steel Sheet Pile Anchor Wall.
- OO-B. Item No. 41-B – Anchored Steel Sheet Pile (SSP) Bulkhead with Alternate Concrete Anchor Block Assemblies
1. Includes all labor, materials, tools, equipment, supervision, and incidentals required to install Anchored Steel Sheet Pile (SSP) Bulkhead with Alternate Concrete Anchor Block Assemblies in accordance with the Contract Documents. This item includes all steel sheet piles, reinforced concrete anchor blocks, bulkhead wale system, anchor plate assemblies, tie rod assemblies, steel sheet pile coating, structural backfill, concrete cap, and hardware necessary to complete the installation of the anchored SSP bulkhead in the location identified in the Contract Drawings. Prior to ordering materials for the Alternate Concrete Anchor Block Assemblies, the Contractor is to probe and locate the top of the rock layer at the location where the anchor wall is scheduled to be installed and promptly provide the Engineer with a survey of the location and elevations of the top of rock layer. The Engineer will then determine and notify the Contractor of the location and quantity of Anchored Steel Sheet Pile (SSP) Bulkhead with Alternate Concrete Anchor Block Assemblies.
  2. Measurement: The quantity to be paid under this item shall be based upon the actual length, measured in linear feet, of Anchored Steel Sheet Pile (SSP) Bulkhead with Alternate Concrete Anchor Block Assemblies installed, as shown on the Contract Drawings, as specified herein, and as ordered by the Engineer.
  3. Payment: Full compensation for furnishing all labor, materials, tools, and equipment necessary to install Anchored Steel Sheet Pile (SSP) Bulkhead with Alternate Concrete Anchor Block Assemblies.
- OO-C. Item No. 41-C – Anchored Steel Sheet Pile (SSP) Bulkhead with Alternate Anchor Plate Assemblies
1. Includes all labor, materials, tools, equipment, supervision, and incidentals required to install Anchored Steel Sheet Pile (SSP) Bulkhead with Alternate Anchor Plate Assemblies in accordance with the Contract Documents. This item includes all steel sheet piles, anchor plate assemblies, bulkhead wale system, tie rod assemblies, steel sheet pile coating, structural backfill, concrete cap, and hardware necessary to complete the installation of the anchored SSP bulkhead in the location identified in the Contract Drawings. Prior to ordering materials for the Alternate Anchor Plate Assemblies, the Contractor is to probe and locate the top of the rock layer at the location where the anchor

**THE DELAVAL PROPERTY  
ENVIRONMENTAL RESTORATION PROGRAM PROJECT**

**Addendum No. 4**

**September 26, 2007**

---

wall is scheduled to be installed and promptly provide the Engineer with a survey of the location and elevations of the top of rock layer. The Engineer will then determine and notify the Contractor of the location and quantity of Anchored Steel Sheet Pile (SSP) Bulkhead with Alternate Anchor Plate Assemblies.

2. Measurement: The quantity to be paid under this item shall be based upon the actual length, measured in linear feet, of Anchored Steel Sheet Pile (SSP) Bulkhead with Alternate Anchor Plate Assemblies installed, as shown on the Contract Drawings, as specified herein, and as ordered by the Engineer.
3. Payment: Full compensation for furnishing all labor, materials, tools, and equipment necessary to install Anchored Steel Sheet Pile (SSP) Bulkhead with Alternate Anchor Plate Assemblies.

**II. Changes to the Contract Plans**

1. Drawing No. W-28, Section A-A:

In SECTION A-A, DELETE the existing Note on the plans and REPLACE it with the following Note:

IF SLOPE OF EXISTING MUDLINE IS STEEPER THAN 2H:1V AT TOE, INSTALL STEEL SHEET PILE CUT-OFF WALL, STEEL SHEET PILES SHALL BE AZ12, 15 FEET LONG.

2. ADD Sketches SK-1 and SK-2, included in Attachment B, as prepared by Ocean & Coastal Consultants Engineering, P.C., and dated September 24, 2007.

---

**CERTIFICATION: Please complete and sign below and fax this sheet to Scott M. Smith, P.E. at (315) 471-3569 to certify that you have received this addendum. Include a copy of this addendum with your sealed bid. Failure to include this addendum (with all attachments) with your bid may disqualify your bid from being considered.**

**Name (Print):** \_\_\_\_\_

**Firm:** \_\_\_\_\_

**Address:** \_\_\_\_\_

**Phone:** \_\_\_\_\_ **Fax:** \_\_\_\_\_

**Signature:** \_\_\_\_\_

**Addendum No. 4**

**Attachment A**

**Revised Bid Form Pages BF-13 through BF-16**

ITEM NUMBER	ESTIMATE OF QUANTITIES	ITEMS WITH UNIT BID PRICE WRITTEN IN WORDS	UNIT PRICE BID		AMOUNT OF BID	
			DOLLARS	CENTS	DOLLARS	CENTS
41-A	203	Anchored Steel Sheet Pile Bulkhead with Steel Sheet Pile Anchor Wall  For: _____ _____ Per  Linear Feet				
41-B	100	Anchored Steel Sheet Pile Bulkhead with Alternate Concrete Anchor Block Assemblies  For: _____ _____ Per  Linear Feet				
41-C	100	Anchored Steel Sheet Pile Bulkhead with Alternate Anchor Plate Assemblies  For: _____ _____ Per  Linear Feet				
42	744	Cantilever Steel Sheet Pile Bulkhead (SSP)  For: _____ _____ Per  Linear Feet				

ITEM NUMBER	ESTIMATE OF QUANTITIES	ITEMS WITH UNIT BID PRICE WRITTEN IN WORDS	UNIT PRICE BID		AMOUNT OF BID	
			DOLLARS	CENTS	DOLLARS	CENTS
43	1,147	SSP Interlock Waterstop  For: _____ _____ Per  Linear Feet				
44	50	SSP Toe Pins  For: _____ _____ Per  Each				
45	1,655	Riprap Toe Protection  For: _____ _____ Per  Cubic Yard				
46	6,490	Riprap Revetment  For: _____ _____ Per  Cubic Yard				



ITEM NUMBER	ESTIMATE OF QUANTITIES	ITEMS WITH UNIT BID PRICE WRITTEN IN WORDS	UNIT PRICE BID		AMOUNT OF BID	
			DOLLARS	CENTS	DOLLARS	CENTS
51	848	Steel Sheet Pile Cut-Off Wall  For: _____ _____ Per  Linear Feet				
52	2,000	Off-Site Disposal of Construction and Demolition Debris Material (Non-Concrete)  For: _____ _____ Per  Tons				
53	500	Off-Site Disposal of Solid Waste Materials  For: _____ _____ Per  Tons				
SUBTOTAL			\$ _____			
PLEASE MAKE SURE A BID IS ENTERED FOR EACH ITEM.  TOTAL OR GROSS SUM WRITTEN IN WORDS: _____ _____			\$ _____			

NOTE: In the event that there are discrepancies within the Bid Schedule, the values written in words will be the accepted quantity.



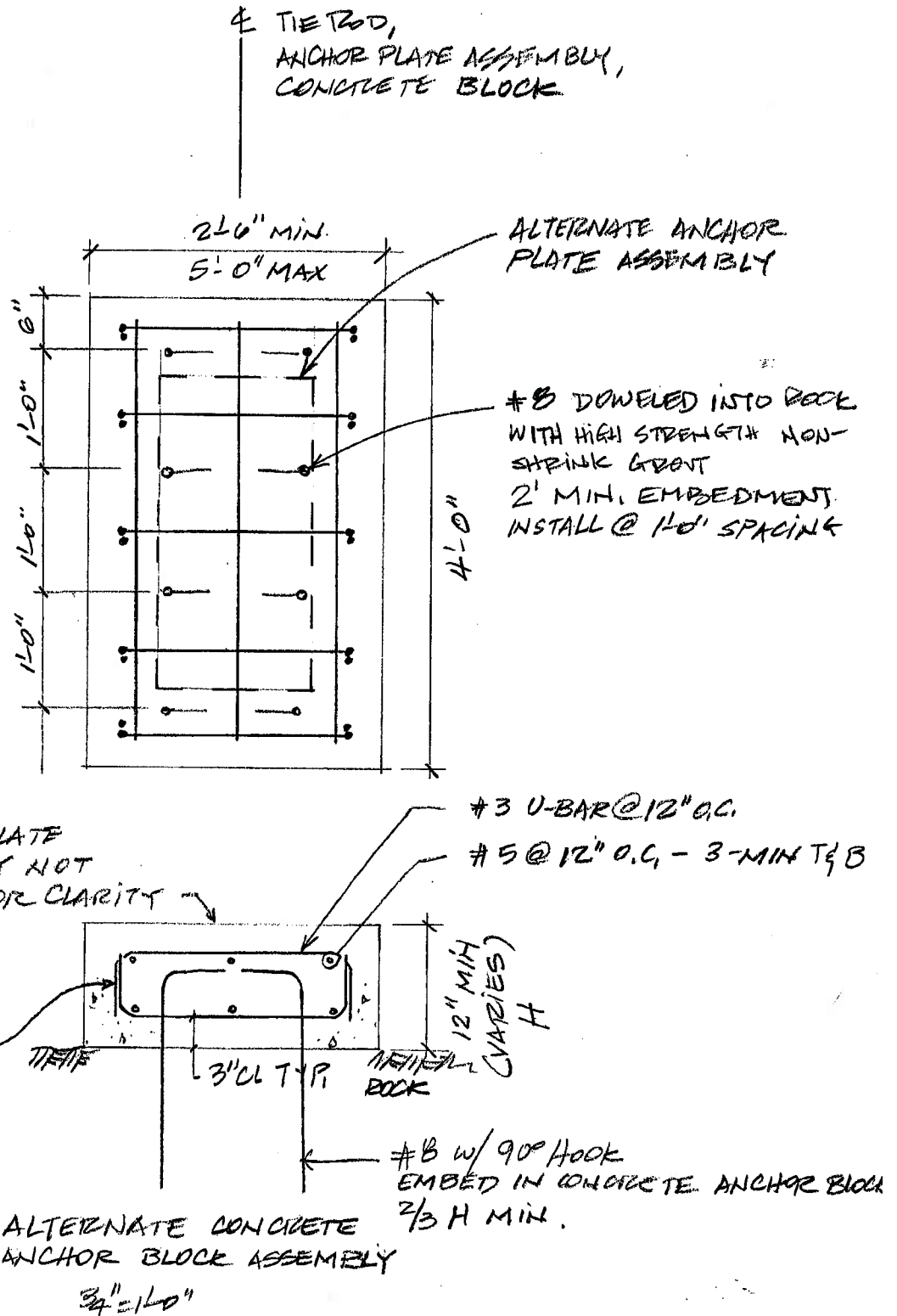
**Addendum No. 4**

**Attachment B**

**Sketches SK-1 & SK-2**

PROJECT DE LAVAL  
SUBJECT \_\_\_\_\_

SHEET NO. SK-1 OF \_\_\_\_\_  
JOB NO. 080423 TASK NO. \_\_\_\_\_  
MADE BY AIM DATE 9-24-07  
CHKD BY \_\_\_\_\_ DATE \_\_\_\_\_





PROJECT DELAVAL  
SUBJECT \_\_\_\_\_

SHEET NO. SK-2 OF \_\_\_\_\_  
JOB NO. 98042.3 TASK NO. \_\_\_\_\_  
MADE BY AM DATE 9-24-07  
CHKD BY \_\_\_\_\_ DATE \_\_\_\_\_

### CONCRETE BLOCK SIZE + DOWELS.

HEIGHT OF BLOCK	DOWELS REQUIRED	SIZE OF CONG BLOCK	TOTAL # DOWELS	DOWEL HOOK	DOWEL EMBED
10'	5 DOWELS PER ROW	4' x 5'	20	90°	24"
8'	4 DOWELS PER ROW	4' x 4'	16	90°	24"
6'	3 DOWELS PER ROW	4' x 3'	12	90°	24"
4'	3 DOWELS PER ROW	4' x 3'	12	90°	24"
2' AND UNDER	2 DOWELS PER ROW	4' x 2.5'	8	90°	24"

- NOTES:
- 1- REINFORCEMENT SHALL BE EPOXY-COATED
  - 2- DOWEL EMBEDMENT IN ROCK SHALL BE AT LEAST  $\frac{2}{3}$  OF HEIGHT OF BLOCK
  - 3- PROVIDE #5 @ 12" O.C. HORIZONTAL FACE REINFORCEMENT ATTACHED TO U-BARDS ON CONCRETE BLOCK 4' HIGH AND OVER.
  - 4- INSTALL ANCHOR PLATE ASSEMBLY SUCH THAT TIE ROD IS HORIZONTAL