

(Fact Sheet Begins Next)

Act Now to Continue Receiving Information About This Site!

DEC's Division of Environmental Remediation (DER) now distributes information about contaminated sites *electronically by email*.

If you would like to continue to receive information about the contaminated site featured in this fact sheet:

You must sign up for the DER email listserv:

www.dec.ny.gov/chemical/61092.html

DER cannot register your email address - only the email address owner can do so. If you already have signed up for the listserv for the county in which the site is located, you need do nothing.



Why You Should Go “Paperless”:

- ☒ Get site information faster and share it easily;
- ☒ Receive information about all sites in a chosen county - read what you want, delete the rest;
- ☒ It helps the environment and stretches your tax dollars.

If “paperless” is not an option for you, call or write to the DER project manager identified in this fact sheet. Indicate that you need to receive paper copies of fact sheets through the Postal Service. Include the site name in your correspondence. The option to receive paper is available to individuals only. Groups, organizations, businesses, and government entities are assumed to have email access.

MANUFACTURED GAS PLANT PROGRAM



Department of
Environmental
Conservation

Where to Find Information:

Project documents are available at the following location(s) to help the public stay informed.

Community Board 6

250 Baltic Street, Brooklyn, NY
(718) 643-3027

NYSDEC

625 Broadway, Albany, NY
(518) 402-9589

Who to Contact:

Comments and questions are always welcome and should be directed as follows:

Project-Related Questions

John Miller, Project Manager
NYSDEC
625 Broadway, Albany, NY
(518) 402-9589
John.miller@dec.ny.gov

Health-Related Questions

Dawn Hettrick
NYSDOH
Corning Tower, Albany, NY
(518) 402-7860
bee@health.ny.gov

For more information about New York's State Superfund Program, visit:

www.dec.ny.gov/chemical/8439.html

FACT SHEET

Citizens MGP Site
Manufactured Gas Plant Program
5th Street and Smith Street
Brooklyn, NY

SITE No. C224012

NYSDEC REGION 2

May 2019

Availability Session to Discuss Start of Remediation of Manufactured Gas Plant Site on the Gowanus Canal

June 13th from 7:00 PM to 9PM

**PS 372
The Children's School
Gym Entrance
291 1st Street
Brooklyn, NY 11215**

NYSDEC invites you to this discussion about cleanup activities preparing to begin at the site. Drop in any time during the session to ask questions and discuss the upcoming site activities.

Preparation is underway for remedial action that will address contamination related to the Citizens former Manufactured Gas Plant (MGP) Site ("site") under New York's MGP Program. Remedial activities are expected to begin in June 2019 and require about 20 months to complete. The cleanup activities are being performed by National Grid with oversight provided by the New York State Department of Environmental Conservation (NYSDEC). Documents related to the cleanup of this site are available at the location(s) identified to the left under "Where to Find Information."

Highlights of the Upcoming Cleanup Activities: The goal of the cleanup action for the site is to achieve cleanup levels that protect public health and the environment. The key components of the remedy are:

- Excavation and off-site disposal of approximately 42,000 cubic yards of impacted soil.
- Demolition of building foundations, underground facilities and former MGP structures.
- Backfilling of excavated areas with soil that meets the soil cleanup objectives (SCOs).
- Construction of approximately 880 feet of steel bulkhead barrier wall along the Gowanus Canal.
- Construction of a cover system consisting of a minimum of two feet of soil in the excavation area.

MANUFACTURED GAS PLANT PROGRAM

- Installation of coal tar recovery wells to collect and remove contamination.
- On-site treatment of water generated during remedial activities to meet discharge requirements.
- Development of a Site Management Plan for the long-term maintenance of the remedy.
- Recording of an Environmental Easement for the institutional and engineering controls needed at the site.

A site-specific health and safety plan (HASP) and a Community Air Monitoring Plan (CAMP) will be implemented during the remediation activities. The HASP and CAMP establish procedures to protect on-site workers and residents and includes required air monitoring as well as dust and odor suppression measures.

Site Description: The site is located in Brooklyn, NY at the intersection of 5th Street and Smith Street. The Gowanus Canal borders the site to the east. The area surrounding the site is densely populated and includes a mix of commercial, industrial and residential properties. The site is approximately 6 acres in size and is composed of two adjoining parcels owned by the City of New York. The site formerly included a third parcel which is located at 459 Smith Street. This parcel was recently removed from the Citizens MGP Site and reentered the Brownfield Cleanup Program as a stand-alone site (C224012B). Until recently the site was occupied by a concrete facility. Currently, the site is vacant; however, a large pile of concrete exists.

Additional site details, including environmental and health assessment summaries, are available on NYSDEC's Environmental Site Remediation Database (by entering the Site ID, C224012) at:

<http://www.dec.ny.gov/cfm/x/etapps/derexternal/index.cfm?pageid=3>

Next Steps: Initial site activities by the contractor will include mobilizing to the site, setting up of on-site facilities and retirement of existing monitoring and recovery wells within the footprint of planned remedial excavations. The first phase of remediation is expected to include excavation on Parcel III followed by excavation on Parcel I. The next phase of work is expected to include construction of a barrier wall along the Gowanus Canal to support the Gowanus Canal dredge work and to reduce migration of impacts from the site.

NYSDEC will keep the public informed throughout the cleanup of the site. After cleanup activities are completed,

National Grid will prepare a Final Engineering Report (FER). The FER will describe the cleanup activities that were completed and certify that cleanup requirements have been achieved or will be achieved.

Summary of the Investigation: The RI field investigations included the use of test pits, soil borings and groundwater wells to delineate the extent of MGP related contamination. Samples were collected and analyzed from surface and subsurface soil, soil vapor and groundwater.

The results of the RI indicate that subsurface soil and groundwater have been impacted by coal tar which was generated during historic MGP operations. The contamination has migrated to depths on-site of up to 153 feet below ground surface. In addition, contamination has migrated off-site under the Gowanus Canal. Additional delineation of contamination will be required at the off-site properties.

MGP Program Overview: New York's MGP Program oversees the investigation and cleanup of former MGP sites. Sites that pose a significant threat to public health and/or the environment go through a process of investigation, evaluation, cleanup and monitoring.

The gas manufacturing process involved the heating of coal and/or petroleum products to produce a gas mixture. Once cooled and purified, the gas was distributed through a local pipeline network. The gas was used for heating and cooking much like natural gas is used today. In the early years, the gas was also used for lighting in homes and in streetlights.

NYSDEC attempts to identify parties responsible for site contamination and require cleanup before committing State funds.

For more information about the SSF, visit:
<http://www.dec.ny.gov/chemical/8439.html>

We encourage you to share this fact sheet with neighbors and tenants, and/or post this fact sheet in a prominent area of your building for others to see.

Receive Site Fact Sheets by Email

Have site information such as this fact sheet sent right to your email inbox. NYSDEC invites you to sign up with one or more contaminated sites county email listservs at:

www.dec.ny.gov/chemical/61092.html

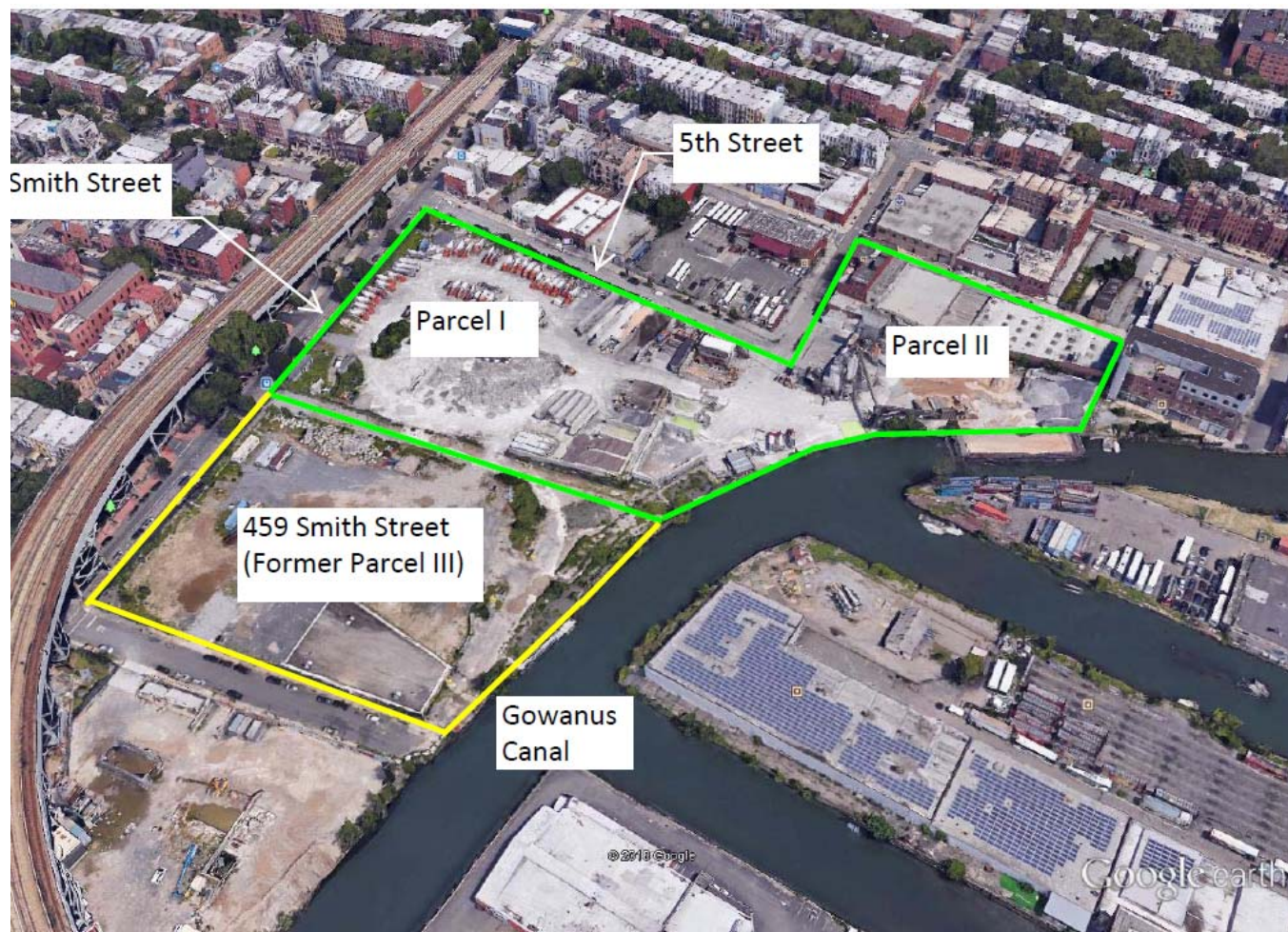
It's quick, it's free, and it will help keep you better informed.

As a listserv member, you will periodically receive site-related information/announcements for all contaminated sites in the county(ies) you select.

Note: Please disregard if you have already signed up and received this fact sheet electronically.

MANUFACTURED GAS PLANT PROGRAM

Site Location



Excavation Areas and Bulkhead Barrier Wall Plan

