

## Daily Status Report

Prepared by: C. Zaccheo

Date: 06/08/2022

Weather: 75 deg F., Clear

**Project: 470 Kent Avenue - Brooklyn, NY - DEC Site #s C224053 and 224053**

Engineer: Matthew Carroll, P.E. Tenen Environmental, LLC	Safety Manager: Claire Zaccheo Tenen Environmental, LLC
Structural Contractor: New Line Services	Excavation Contractor: EDC NY

### Work Activities Performed:

- 1) ECD making additional repairs to the turbidity curtain for bulkhead demolition;
- 2) Trucking out and disposal of 22 loads (approximately 440 CY) of demolished concrete to the Coplay Quarry in Whitehall, PA;
- 3) Delivery of 2 loads of crushed stone from Braen Aggregates for the truck pad;
- 4) ECD excavating for support of pile installation, and;
- 5) ECD driving piles within building footprint.

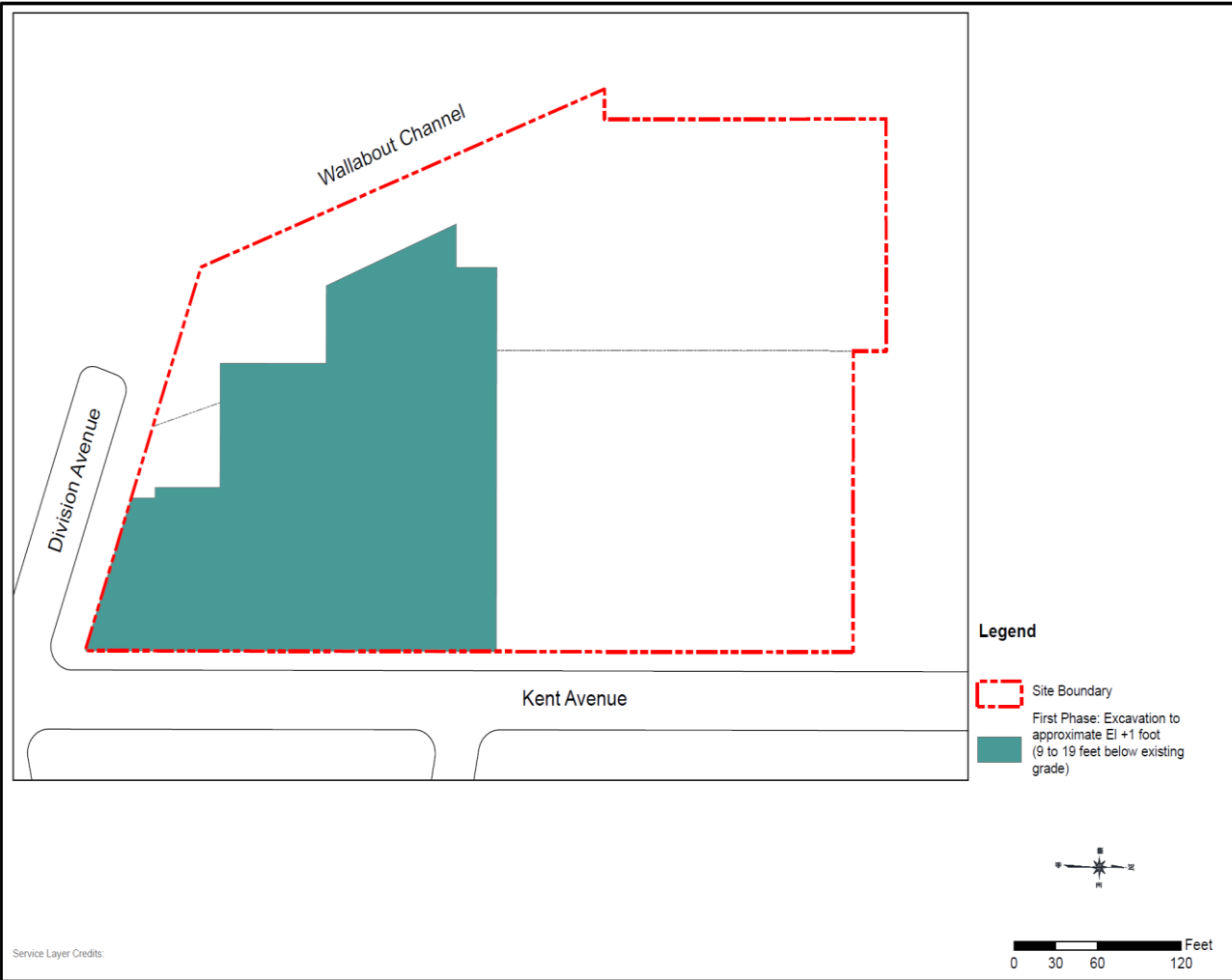
**Samples Collected (Since Last Report):** None.

**Air Monitoring (Since Last Report):** CAMP graphs and tables are included below.

**Problems Encountered:** None.

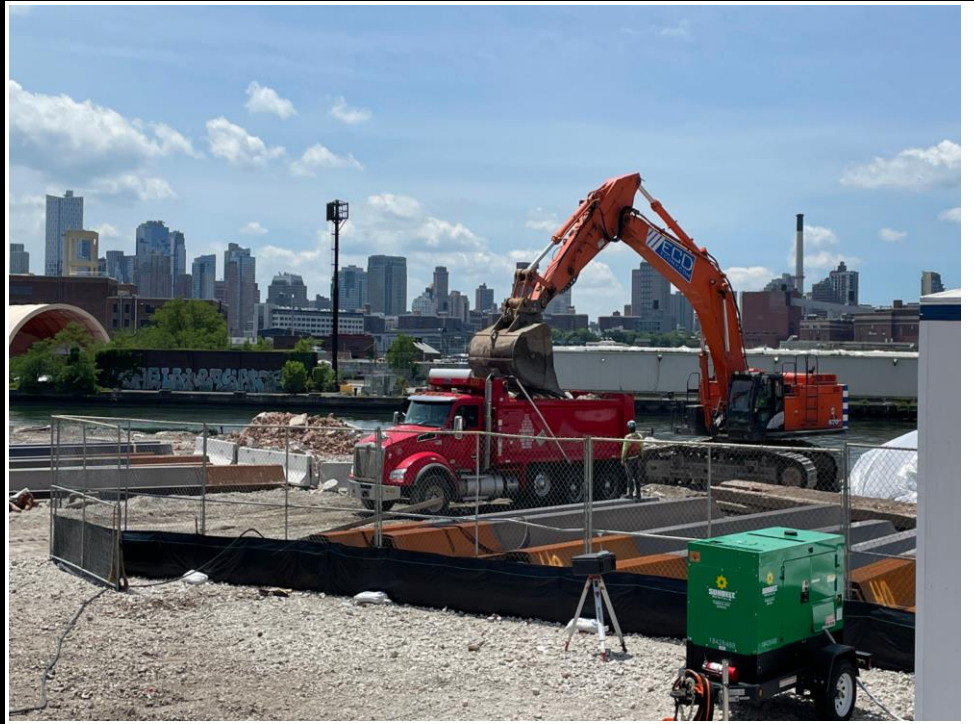
**Planned Work Activities for Next Day/Week:** Continue pile installation, RCA disposal & bulkhead demolition.

Site Layout Map



**Photo 1:**

View of ECD loading demolished concrete for disposal.



**Photo 2:**

View clean stone from Braen Aggregates for the truck pad.

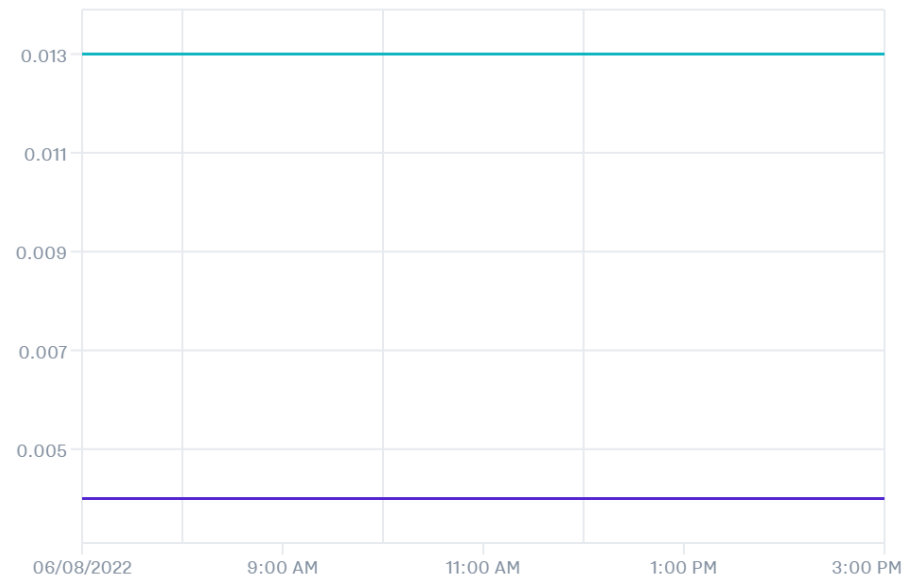


**CAMP:  
Downwind  
Particulates**

**Dust Levels**

0.013 mg/m<sup>3</sup>

0.004 mg/m<sup>3</sup>

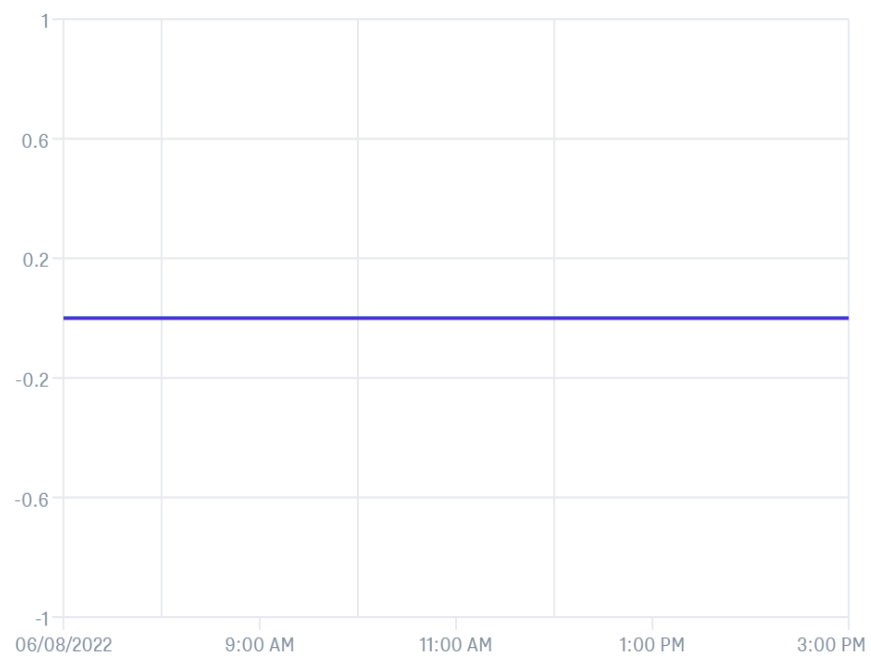


**CAMP:  
Downwind VOCs**

**VOC Levels**

0 ppm

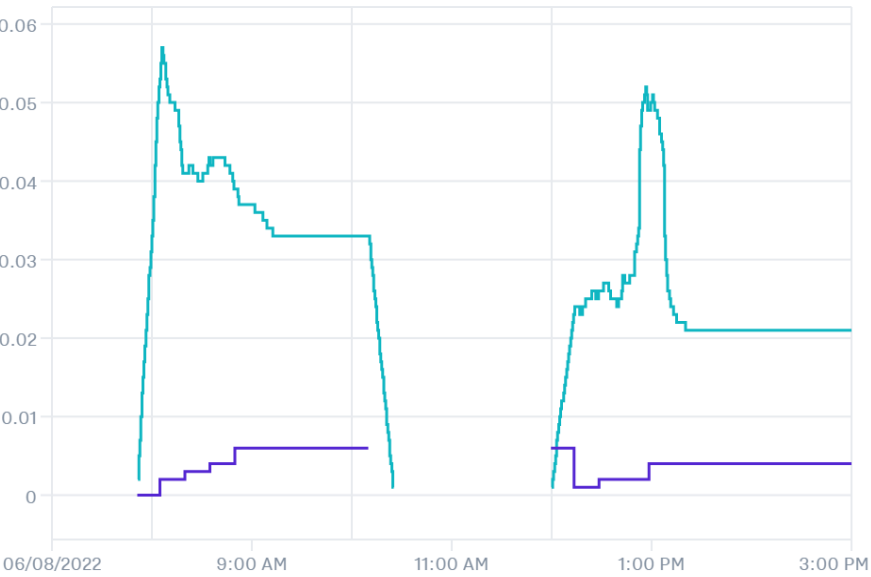
0 ppm



**CAMP:**  
**Upwind Particulates**

**Dust Levels**

0.021 mg/m<sup>3</sup>      0.004 mg/m<sup>3</sup>



Upwind CAMP  
470 Kent Avenue - Brooklyn, NY  
BCP Site No.: C224053

Asset Name	Start Time	End Time	DT2 TWA (mg/m <sup>3</sup> )	MR3K TWA (ppm)
Modem 47789	6/8/2022 7:00	6/8/2022 7:10	0.002	0
Modem 47789	6/8/2022 7:10	6/8/2022 7:20	0.002	0
Modem 47789	6/8/2022 7:20	6/8/2022 7:30	0.002	0
Modem 47789	6/8/2022 7:30	6/8/2022 7:40	0.002	0
Modem 47789	6/8/2022 7:40	6/8/2022 7:50	0.002	0
Modem 47789	6/8/2022 7:50	6/8/2022 8:00	0.002	0
Modem 47789	6/8/2022 8:00	6/8/2022 8:10	0.002	0
Modem 47789	6/8/2022 8:10	6/8/2022 8:20	0.003	0
Modem 47789	6/8/2022 8:20	6/8/2022 8:30	0.003	0
Modem 47789	6/8/2022 8:30	6/8/2022 8:40	0.004	0
Modem 47789	6/8/2022 8:40	6/8/2022 8:50	0.006	0
Modem 47789	6/8/2022 8:50	6/8/2022 9:00	0.006	0
Modem 47789	6/8/2022 9:00	6/8/2022 9:10	0.006	0
Modem 47789	6/8/2022 9:10	6/8/2022 9:20	0.006	0
Modem 47789	6/8/2022 9:20	6/8/2022 9:30	0.006	0
Modem 47789	6/8/2022 9:30	6/8/2022 9:40	0.006	0
Modem 47789	6/8/2022 9:40	6/8/2022 9:50	0.006	0
Modem 47789	6/8/2022 9:50	6/8/2022 10:00	0.006	0
Modem 47789	6/8/2022 10:00	6/8/2022 10:10	0.006	0
Modem 47789	6/8/2022 10:10	6/8/2022 10:20	0.006	0
Modem 47789	6/8/2022 10:20	6/8/2022 10:30	0.006	0
Modem 47789	6/8/2022 10:30	6/8/2022 10:40	0.006	0
Modem 47789	6/8/2022 10:40	6/8/2022 10:50	0.006	0
Modem 47789	6/8/2022 10:50	6/8/2022 11:00	0.006	0
Modem 47789	6/8/2022 11:00	6/8/2022 11:10	0.006	0
Modem 47789	6/8/2022 11:10	6/8/2022 11:20	0.006	0
Modem 47789	6/8/2022 11:20	6/8/2022 11:30	0.006	0
Modem 47789	6/8/2022 11:30	6/8/2022 11:40	0.006	0
Modem 47789	6/8/2022 11:40	6/8/2022 11:50	0.006	0
Modem 47789	6/8/2022 11:50	6/8/2022 12:00	0.006	0
Modem 47789	6/8/2022 12:00	6/8/2022 12:10	0.006	0
Modem 47789	6/8/2022 12:10	6/8/2022 12:20	0.001	0
Modem 47789	6/8/2022 12:20	6/8/2022 12:30	0.002	0
Modem 47789	6/8/2022 12:30	6/8/2022 12:40	0.002	0
Modem 47789	6/8/2022 12:40	6/8/2022 12:50	0.002	0
Modem 47789	6/8/2022 12:50	6/8/2022 13:00	0.004	0
Modem 47789	6/8/2022 13:00	6/8/2022 13:10	0.004	0
Modem 47789	6/8/2022 13:10	6/8/2022 13:20	0.004	0
Modem 47789	6/8/2022 13:20	6/8/2022 13:30	0.004	0
Modem 47789	6/8/2022 13:30	6/8/2022 13:40	0.004	0
Modem 47789	6/8/2022 13:40	6/8/2022 13:50	0.004	0
Modem 47789	6/8/2022 13:50	6/8/2022 14:00	0.004	0
Modem 47789	6/8/2022 14:00	6/8/2022 14:10	0.004	0
Modem 47789	6/8/2022 14:10	6/8/2022 14:20	0.004	0
Modem 47789	6/8/2022 14:20	6/8/2022 14:30	0.004	0
Modem 47789	6/8/2022 14:30	6/8/2022 14:40	0.004	0
Modem 47789	6/8/2022 14:40	6/8/2022 14:50	0.004	0
Modem 47789	6/8/2022 14:50	6/8/2022 15:00	0.004	0

Downwind CAMP  
470 Kent Avenue - Brooklyn, NY  
BCP Site No.: C224053

Asset Name	Start Time	End Time	DT2 TWA (mg/m <sup>3</sup> )	MR3K TWA (ppm)
Modem 50778	6/8/2022 7:00	6/8/2022 7:10	0.004	0
Modem 50778	6/8/2022 7:10	6/8/2022 7:20	0.004	0
Modem 50778	6/8/2022 7:20	6/8/2022 7:30	0.004	0
Modem 50778	6/8/2022 7:30	6/8/2022 7:40	0.004	0
Modem 50778	6/8/2022 7:40	6/8/2022 7:50	0.004	0
Modem 50778	6/8/2022 7:50	6/8/2022 8:00	0.004	0
Modem 50778	6/8/2022 8:00	6/8/2022 8:10	0.004	0
Modem 50778	6/8/2022 8:10	6/8/2022 8:20	0.004	0
Modem 50778	6/8/2022 8:20	6/8/2022 8:30	0.004	0
Modem 50778	6/8/2022 8:30	6/8/2022 8:40	0.004	0
Modem 50778	6/8/2022 8:40	6/8/2022 8:50	0.004	0
Modem 50778	6/8/2022 8:50	6/8/2022 9:00	0.004	0
Modem 50778	6/8/2022 9:00	6/8/2022 9:10	0.004	0
Modem 50778	6/8/2022 9:10	6/8/2022 9:20	0.004	0
Modem 50778	6/8/2022 9:20	6/8/2022 9:30	0.004	0
Modem 50778	6/8/2022 9:30	6/8/2022 9:40	0.004	0
Modem 50778	6/8/2022 9:40	6/8/2022 9:50	0.004	0
Modem 50778	6/8/2022 9:50	6/8/2022 10:00	0.004	0
Modem 50778	6/8/2022 10:00	6/8/2022 10:10	0.004	0
Modem 50778	6/8/2022 10:10	6/8/2022 10:20	0.004	0
Modem 50778	6/8/2022 10:20	6/8/2022 10:30	0.004	0
Modem 50778	6/8/2022 10:30	6/8/2022 10:40	0.004	0
Modem 50778	6/8/2022 10:40	6/8/2022 10:50	0.004	0
Modem 50778	6/8/2022 10:50	6/8/2022 11:00	0.004	0
Modem 50778	6/8/2022 11:00	6/8/2022 11:10	0.004	0
Modem 50778	6/8/2022 11:10	6/8/2022 11:20	0.004	0
Modem 50778	6/8/2022 11:20	6/8/2022 11:30	0.004	0
Modem 50778	6/8/2022 11:30	6/8/2022 11:40	0.004	0
Modem 50778	6/8/2022 11:40	6/8/2022 11:50	0.004	0
Modem 50778	6/8/2022 11:50	6/8/2022 12:00	0.004	0
Modem 50778	6/8/2022 12:00	6/8/2022 12:10	0.004	0
Modem 50778	6/8/2022 12:10	6/8/2022 12:20	0.004	0
Modem 50778	6/8/2022 12:20	6/8/2022 12:30	0.004	0
Modem 50778	6/8/2022 12:30	6/8/2022 12:40	0.004	0
Modem 50778	6/8/2022 12:40	6/8/2022 12:50	0.004	0
Modem 50778	6/8/2022 12:50	6/8/2022 13:00	0.004	0
Modem 50778	6/8/2022 13:00	6/8/2022 13:10	0.004	0
Modem 50778	6/8/2022 13:10	6/8/2022 13:20	0.004	0
Modem 50778	6/8/2022 13:20	6/8/2022 13:30	0.004	0
Modem 50778	6/8/2022 13:30	6/8/2022 13:40	0.004	0
Modem 50778	6/8/2022 13:40	6/8/2022 13:50	0.004	0
Modem 50778	6/8/2022 13:50	6/8/2022 14:00	0.004	0
Modem 50778	6/8/2022 14:00	6/8/2022 14:10	0.004	0
Modem 50778	6/8/2022 14:10	6/8/2022 14:20	0.004	0
Modem 50778	6/8/2022 14:20	6/8/2022 14:30	0.004	0
Modem 50778	6/8/2022 14:30	6/8/2022 14:40	0.004	0
Modem 50778	6/8/2022 14:40	6/8/2022 14:50	0.004	0
Modem 50778	6/8/2022 14:50	6/8/2022 15:00	0.004	0

Perimeter CAMP  
470 Kent Avenue - Brooklyn, NY  
BCP Site No.: C224053

Asset Name	Start Time	End Time	DT2 TWA (mg/m <sup>3</sup> )	MR3K TWA (ppm)
Modem 47959	6/8/2022 7:00	6/8/2022 7:10	0.013	0.213
Modem 47959	6/8/2022 7:10	6/8/2022 7:20	0.013	0.213
Modem 47959	6/8/2022 7:20	6/8/2022 7:30	0.013	0.213
Modem 47959	6/8/2022 7:30	6/8/2022 7:40	0.013	0.213
Modem 47959	6/8/2022 7:40	6/8/2022 7:50	0.013	0.213
Modem 47959	6/8/2022 7:50	6/8/2022 8:00	0.013	0.213
Modem 47959	6/8/2022 8:00	6/8/2022 8:10	0.013	0.213
Modem 47959	6/8/2022 8:10	6/8/2022 8:20	0.013	0.213
Modem 47959	6/8/2022 8:20	6/8/2022 8:30	0.013	0.213
Modem 47959	6/8/2022 8:30	6/8/2022 8:40	0.013	0.213
Modem 47959	6/8/2022 8:40	6/8/2022 8:50	0.013	0.213
Modem 47959	6/8/2022 8:50	6/8/2022 9:00	0.013	0.213
Modem 47959	6/8/2022 9:00	6/8/2022 9:10	0.013	0.213
Modem 47959	6/8/2022 9:10	6/8/2022 9:20	0.013	0.213
Modem 47959	6/8/2022 9:20	6/8/2022 9:30	0.013	0.213
Modem 47959	6/8/2022 9:30	6/8/2022 9:40	0.013	0.213
Modem 47959	6/8/2022 9:40	6/8/2022 9:50	0.013	0.213
Modem 47959	6/8/2022 9:50	6/8/2022 10:00	0.013	0.213
Modem 47959	6/8/2022 10:00	6/8/2022 10:10	0.013	0.213
Modem 47959	6/8/2022 10:10	6/8/2022 10:20	0.013	0.213
Modem 47959	6/8/2022 10:20	6/8/2022 10:30	0.013	0.213
Modem 47959	6/8/2022 10:30	6/8/2022 10:40	0.013	0.213
Modem 47959	6/8/2022 10:40	6/8/2022 10:50	0.013	0.213
Modem 47959	6/8/2022 10:50	6/8/2022 11:00	0.013	0.213
Modem 47959	6/8/2022 11:00	6/8/2022 11:10	0.013	0.213
Modem 47959	6/8/2022 11:10	6/8/2022 11:20	0.013	0.213
Modem 47959	6/8/2022 11:20	6/8/2022 11:30	0.013	0.213
Modem 47959	6/8/2022 11:30	6/8/2022 11:40	0.013	0.213
Modem 47959	6/8/2022 11:40	6/8/2022 11:50	0.013	0.213
Modem 47959	6/8/2022 11:50	6/8/2022 12:00	0.013	0.213
Modem 47959	6/8/2022 12:00	6/8/2022 12:10	0.013	0.213
Modem 47959	6/8/2022 12:10	6/8/2022 12:20	0.013	0.213
Modem 47959	6/8/2022 12:20	6/8/2022 12:30	0.013	0.213
Modem 47959	6/8/2022 12:30	6/8/2022 12:40	0.013	0.213
Modem 47959	6/8/2022 12:40	6/8/2022 12:50	0.013	0.213
Modem 47959	6/8/2022 12:50	6/8/2022 13:00	0.013	0.213
Modem 47959	6/8/2022 13:00	6/8/2022 13:10	0.013	0.213
Modem 47959	6/8/2022 13:10	6/8/2022 13:20	0.013	0.213
Modem 47959	6/8/2022 13:20	6/8/2022 13:30	0.013	0.213
Modem 47959	6/8/2022 13:30	6/8/2022 13:40	0.013	0.213
Modem 47959	6/8/2022 13:40	6/8/2022 13:50	0.013	0.213
Modem 47959	6/8/2022 13:50	6/8/2022 14:00	0.013	0.213
Modem 47959	6/8/2022 14:00	6/8/2022 14:10	0.013	0.213
Modem 47959	6/8/2022 14:10	6/8/2022 14:20	0.013	0.213
Modem 47959	6/8/2022 14:20	6/8/2022 14:30	0.013	0.213
Modem 47959	6/8/2022 14:30	6/8/2022 14:40	0.013	0.213
Modem 47959	6/8/2022 14:40	6/8/2022 14:50	0.013	0.213
Modem 47959	6/8/2022 14:50	6/8/2022 15:00	0.013	0.213



Perimeter CAMP  
470 Kent Avenue - Brooklyn, NY  
BCP Site No.: C224053

Asset Name	Start Time	End Time	DT2 TWA (mg/m <sup>3</sup> )	MR3K TWA (ppm)
Modem 50061	6/8/2022 7:00	6/8/2022 7:10	0.032	0
Modem 50061	6/8/2022 7:10	6/8/2022 7:20	0.032	0
Modem 50061	6/8/2022 7:20	6/8/2022 7:30	0.032	0
Modem 50061	6/8/2022 7:30	6/8/2022 7:40	0.032	0
Modem 50061	6/8/2022 7:40	6/8/2022 7:50	0.032	0
Modem 50061	6/8/2022 7:50	6/8/2022 8:00	0.002	0.009
Modem 50061	6/8/2022 8:00	6/8/2022 8:10	0.002	0.009
Modem 50061	6/8/2022 8:10	6/8/2022 8:20	0.003	0.009
Modem 50061	6/8/2022 8:20	6/8/2022 8:30	0.003	0.009
Modem 50061	6/8/2022 8:30	6/8/2022 8:40	0.004	0.009
Modem 50061	6/8/2022 8:40	6/8/2022 8:50	0.005	0.009
Modem 50061	6/8/2022 8:50	6/8/2022 9:00	0.006	0.009
Modem 50061	6/8/2022 9:00	6/8/2022 9:10	0.007	0.009
Modem 50061	6/8/2022 9:10	6/8/2022 9:20	0.008	0.009
Modem 50061	6/8/2022 9:20	6/8/2022 9:30	0.008	0.009
Modem 50061	6/8/2022 9:30	6/8/2022 9:40	0.009	0.009
Modem 50061	6/8/2022 9:40	6/8/2022 9:50	0.01	0.009
Modem 50061	6/8/2022 9:50	6/8/2022 10:00	0.011	0.009
Modem 50061	6/8/2022 10:00	6/8/2022 10:10	0.012	0.009
Modem 50061	6/8/2022 10:10	6/8/2022 10:20	0.013	0.009
Modem 50061	6/8/2022 10:20	6/8/2022 10:30	0.014	0.009
Modem 50061	6/8/2022 10:30	6/8/2022 10:40	0.014	0.009
Modem 50061	6/8/2022 10:40	6/8/2022 10:50	0.014	0.009
Modem 50061	6/8/2022 10:50	6/8/2022 11:00	0.014	0.009
Modem 50061	6/8/2022 11:00	6/8/2022 11:10	0.014	0.009
Modem 50061	6/8/2022 11:10	6/8/2022 11:20	0.014	0.009
Modem 50061	6/8/2022 11:20	6/8/2022 11:30	0.014	0.009
Modem 50061	6/8/2022 11:30	6/8/2022 11:40	0.014	0.009
Modem 50061	6/8/2022 11:40	6/8/2022 11:50	0.014	0.009
Modem 50061	6/8/2022 11:50	6/8/2022 12:00	0.014	0.009
Modem 50061	6/8/2022 12:00	6/8/2022 12:10	0.014	0.009
Modem 50061	6/8/2022 12:10	6/8/2022 12:20	0.014	0.009
Modem 50061	6/8/2022 12:20	6/8/2022 12:30	0.014	0.009
Modem 50061	6/8/2022 12:30	6/8/2022 12:40	0.014	0.009
Modem 50061	6/8/2022 12:40	6/8/2022 12:50	0.014	0.009
Modem 50061	6/8/2022 12:50	6/8/2022 13:00	0.014	0.009
Modem 50061	6/8/2022 13:00	6/8/2022 13:10	0.014	0.009
Modem 50061	6/8/2022 13:10	6/8/2022 13:20	0.014	0.009
Modem 50061	6/8/2022 13:20	6/8/2022 13:30	0.014	0.009
Modem 50061	6/8/2022 13:30	6/8/2022 13:40	0.014	0.009
Modem 50061	6/8/2022 13:40	6/8/2022 13:50	0.014	0.009
Modem 50061	6/8/2022 13:50	6/8/2022 14:00	0.014	0.009
Modem 50061	6/8/2022 14:00	6/8/2022 14:10	0.014	0.009
Modem 50061	6/8/2022 14:10	6/8/2022 14:20	0.014	0.009
Modem 50061	6/8/2022 14:20	6/8/2022 14:30	0.014	0.009
Modem 50061	6/8/2022 14:30	6/8/2022 14:40	0.014	0.009
Modem 50061	6/8/2022 14:40	6/8/2022 14:50	0.014	0.009
Modem 50061	6/8/2022 14:50	6/8/2022 15:00	0.014	0.009