

Daily Status Report

Prepared by: C. Zaccheo

Date: 11/10/2022

Weather: 50 deg F., Clear

Project: 470 Kent Avenue - Brooklyn, NY - DEC Site #s C224053 and 224053

Engineer: Matthew Carroll, P.E. Tenen Environmental, LLC	Safety Manager: Claire Zaccheo Tenen Environmental, LLC
Structural Contractor: New Line Services	Excavation Contractor: ECD NY

Work Activities Performed:

- 1) ECD continuing with lagging installation for SOE;
- 2) ECD installing sheeting and piles in marine area;
- 3) ECD continuing with minor excavation in support of pile installation;
- 4) ECD continue welding work in support of bulkhead installation, and;
- 5) ECD installing H-pile for SOE.

Samples Collected (Since Last Report): None.

Air Monitoring (Since Last Report): CAMP graphs and tables are included below.

Problems Encountered: None.

Planned Work Activities for Next Day/Week: Continue soil excavation; continue soil and C&D disposal and pile installation.

Site Layout Map

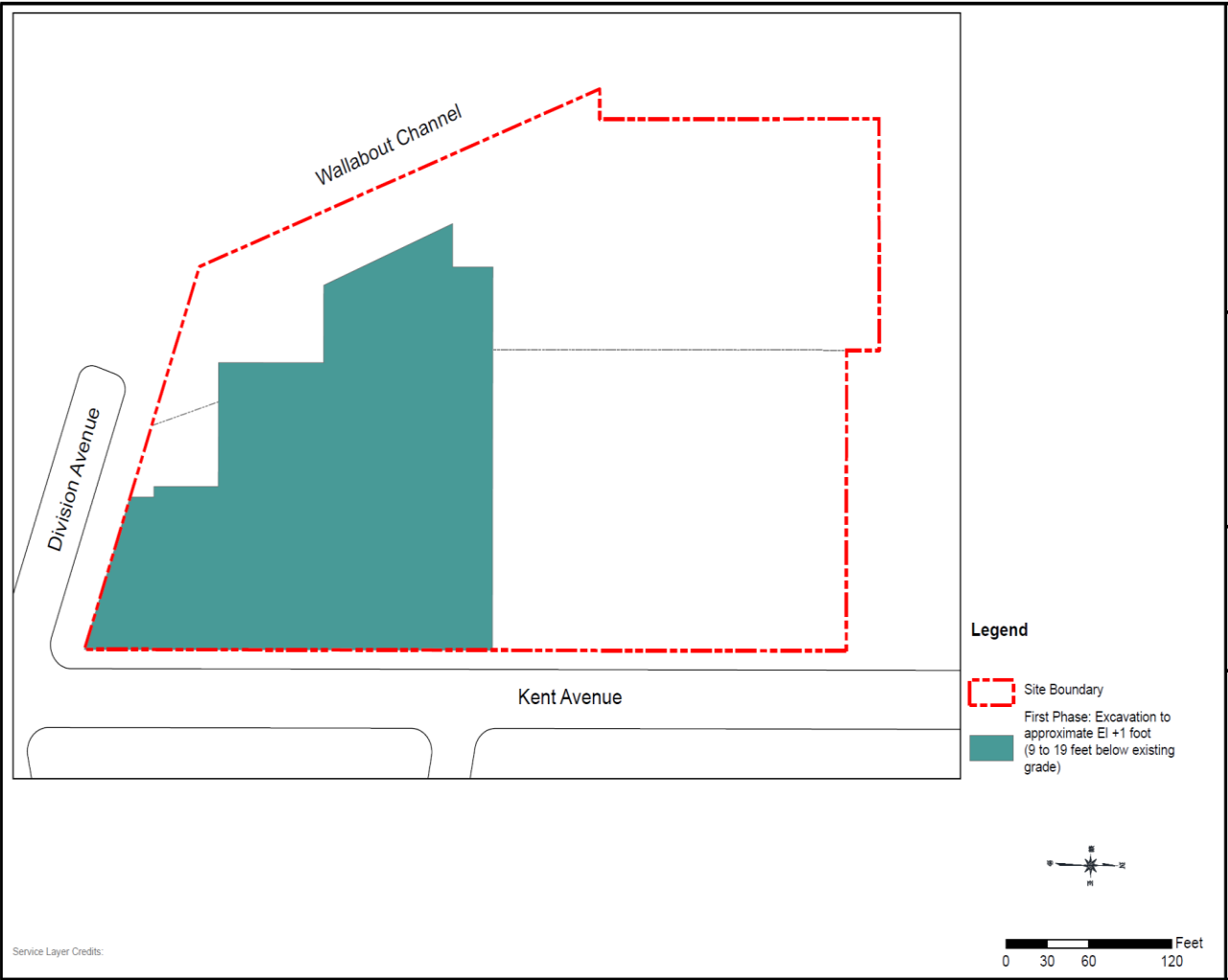


Photo 1:

View of the site facing northwest.

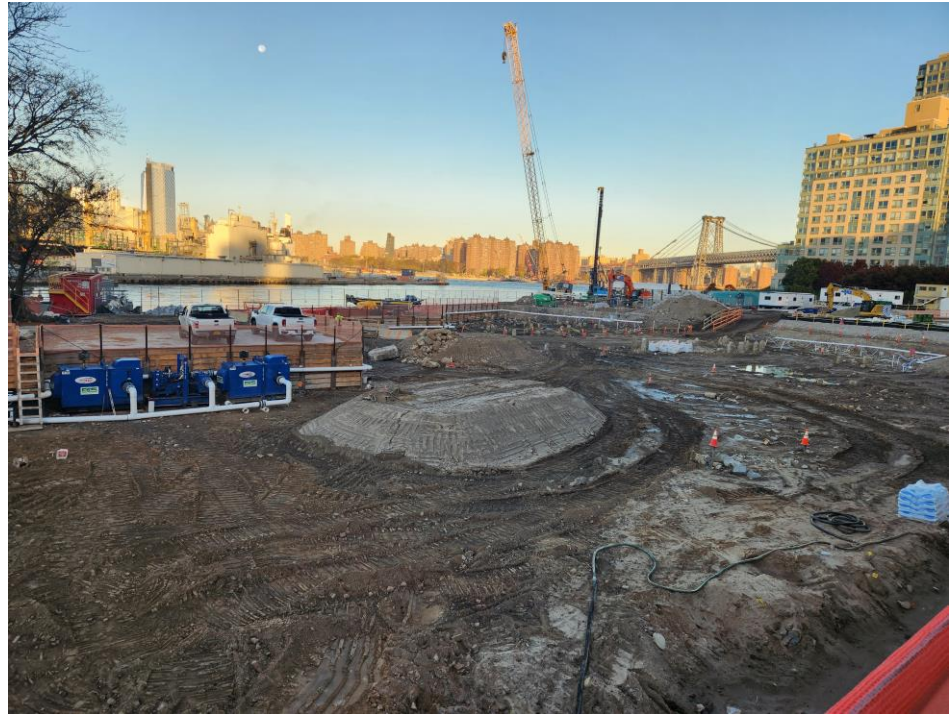
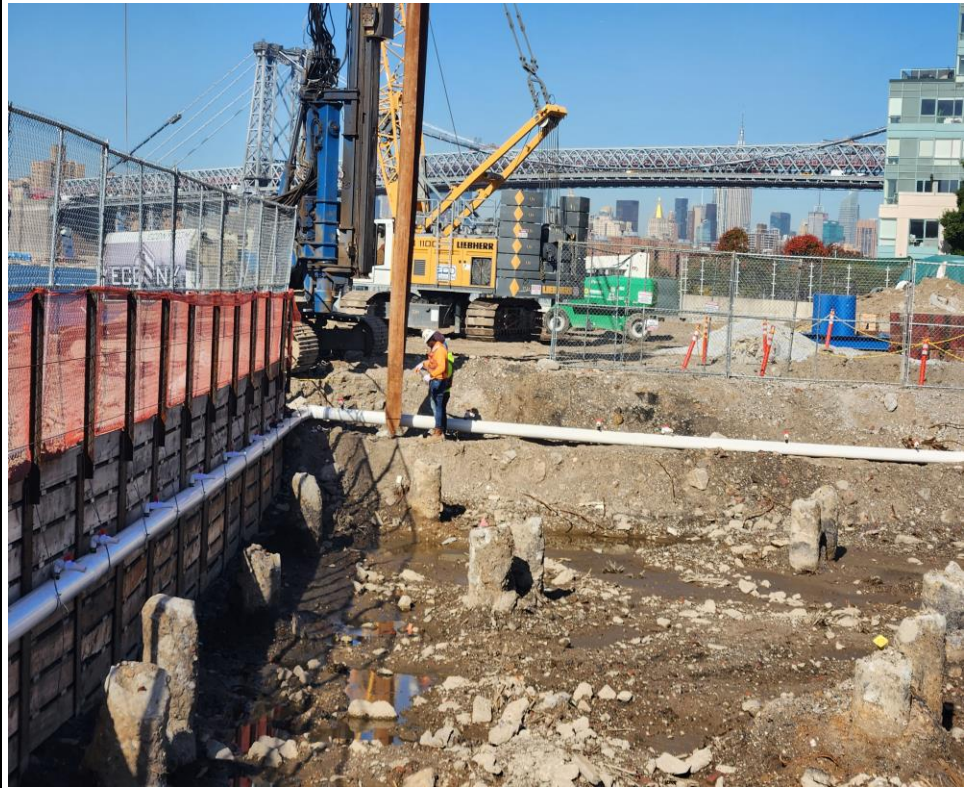


Photo 2:

ECD installing H-pile for SOE.



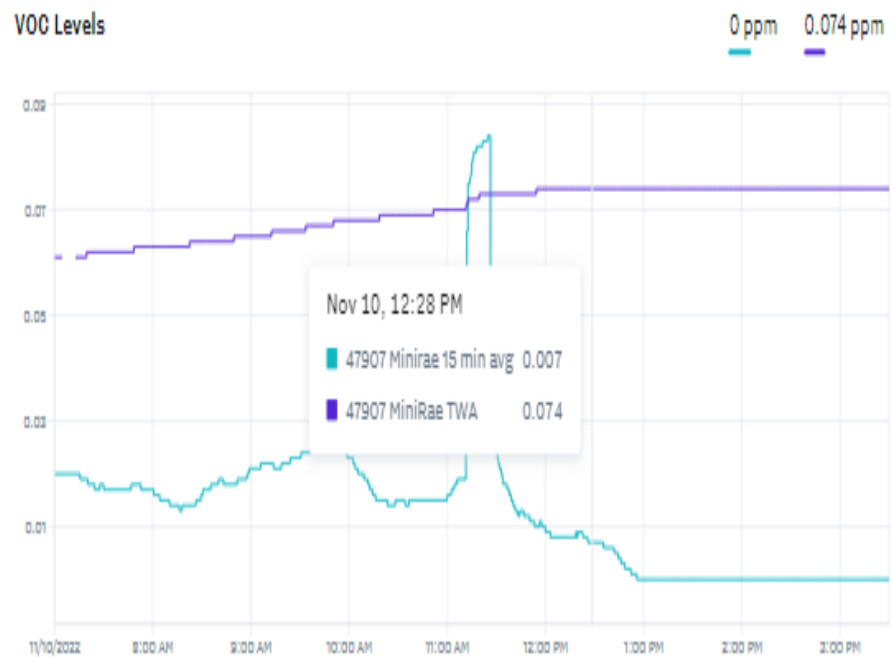
CAMP:
Downwind
Particulates

Dust Levels



CAMP:
Downwind VOCs

VOC Levels



CAMP:
Upwind Particulates

Dust Levels



Downwind CAMP
470 Kent Avenue - Brooklyn, NY
BCP Site No.: C224053

Asset Name	Start Time	End Time	DT2 TWA (mg/m ³)	MR3K TWA (ppm)
Modem 47907	11/10/2022 7:00	11/10/2022 7:10	0.022	0.061
Modem 47907	11/10/2022 7:10	11/10/2022 7:20	0.022	0.062
Modem 47907	11/10/2022 7:20	11/10/2022 7:30	0.022	0.062
Modem 47907	11/10/2022 7:30	11/10/2022 7:40	0.022	0.062
Modem 47907	11/10/2022 7:40	11/10/2022 7:50	0.022	0.063
Modem 47907	11/10/2022 7:50	11/10/2022 8:00	0.022	0.063
Modem 47907	11/10/2022 8:00	11/10/2022 8:10	0.022	0.063
Modem 47907	11/10/2022 8:10	11/10/2022 8:20	0.022	0.063
Modem 47907	11/10/2022 8:20	11/10/2022 8:30	0.022	0.064
Modem 47907	11/10/2022 8:30	11/10/2022 8:40	0.022	0.064
Modem 47907	11/10/2022 8:40	11/10/2022 8:50	0.022	0.065
Modem 47907	11/10/2022 8:50	11/10/2022 9:00	0.022	0.065
Modem 47907	11/10/2022 9:00	11/10/2022 9:10	0.022	0.065
Modem 47907	11/10/2022 9:10	11/10/2022 9:20	0.022	0.066
Modem 47907	11/10/2022 9:20	11/10/2022 9:30	0.022	0.066
Modem 47907	11/10/2022 9:30	11/10/2022 9:40	0.022	0.067
Modem 47907	11/10/2022 9:40	11/10/2022 9:50	0.022	0.067
Modem 47907	11/10/2022 9:50	11/10/2022 10:00	0.022	0.068
Modem 47907	11/10/2022 10:00	11/10/2022 10:10	0.022	0.068
Modem 47907	11/10/2022 10:10	11/10/2022 10:20	0.022	0.069
Modem 47907	11/10/2022 10:20	11/10/2022 10:30	0.022	0.069
Modem 47907	11/10/2022 10:30	11/10/2022 10:40	0.022	0.069
Modem 47907	11/10/2022 10:40	11/10/2022 10:50	0.022	0.069
Modem 47907	11/10/2022 10:50	11/10/2022 11:00	0.022	0.07
Modem 47907	11/10/2022 11:00	11/10/2022 11:10	0.022	0.07
Modem 47907	11/10/2022 11:10	11/10/2022 11:20	0.022	0.073
Modem 47907	11/10/2022 11:20	11/10/2022 11:30	0.022	0.073
Modem 47907	11/10/2022 11:30	11/10/2022 11:40	0.022	0.073
Modem 47907	11/10/2022 11:40	11/10/2022 11:50	0.022	0.073
Modem 47907	11/10/2022 11:50	11/10/2022 12:00	0.022	0.074
Modem 47907	11/10/2022 12:00	11/10/2022 12:10	0.022	0.074
Modem 47907	11/10/2022 12:10	11/10/2022 12:20	0.022	0.074
Modem 47907	11/10/2022 12:20	11/10/2022 12:30	0.022	0.074
Modem 47907	11/10/2022 12:30	11/10/2022 12:40	0.022	0.074
Modem 47907	11/10/2022 12:40	11/10/2022 12:50	0.022	0.074
Modem 47907	11/10/2022 12:50	11/10/2022 13:00	0.022	0.074
Modem 47907	11/10/2022 13:00	11/10/2022 13:10	0.022	0.074
Modem 47907	11/10/2022 13:10	11/10/2022 13:20	0.022	0.074
Modem 47907	11/10/2022 13:20	11/10/2022 13:30	0.022	0.074
Modem 47907	11/10/2022 13:30	11/10/2022 13:40	0.022	0.074
Modem 47907	11/10/2022 13:40	11/10/2022 13:50	0.022	0.074
Modem 47907	11/10/2022 13:50	11/10/2022 14:00	0.022	0.074
Modem 47907	11/10/2022 14:00	11/10/2022 14:10	0.022	0.074
Modem 47907	11/10/2022 14:10	11/10/2022 14:20	0.022	0.074
Modem 47907	11/10/2022 14:20	11/10/2022 14:30	0.022	0.074
Modem 47907	11/10/2022 14:30	11/10/2022 14:40	0.022	0.074
Modem 47907	11/10/2022 14:40	11/10/2022 14:50	0.022	0.074
Modem 47907	11/10/2022 14:50	11/10/2022 15:00	0.022	0.074
Modem 47907	11/10/2022 15:00	11/10/2022 15:10	0.022	0.074
Modem 47907	11/10/2022 15:10	11/10/2022 15:20	0.022	0.074
Modem 47907	11/10/2022 15:20	11/10/2022 15:30	0.022	0.074

Upwind CAMP
470 Kent Avenue - Brooklyn, NY
BCP Site No.: C224053

Asset Name	Start Time	End Time	DT2 TWA (mg/m³)	MR3K TWA (ppm)
Modem 212221	11/10/2022 7:00	11/10/2022 7:10	0.014	0
Modem 212221	11/10/2022 7:10	11/10/2022 7:20	0.014	0
Modem 212221	11/10/2022 7:20	11/10/2022 7:30	0.014	0
Modem 212221	11/10/2022 7:30	11/10/2022 7:40	0.014	0
Modem 212221	11/10/2022 7:40	11/10/2022 7:50	0.014	0
Modem 212221	11/10/2022 7:50	11/10/2022 8:00	0.014	0
Modem 212221	11/10/2022 8:00	11/10/2022 8:10	0.014	0
Modem 212221	11/10/2022 8:10	11/10/2022 8:20	0.014	0
Modem 212221	11/10/2022 8:20	11/10/2022 8:30	0.014	0
Modem 212221	11/10/2022 8:30	11/10/2022 8:40	0.014	0
Modem 212221	11/10/2022 8:40	11/10/2022 8:50	0.014	0
Modem 212221	11/10/2022 8:50	11/10/2022 9:00	0.014	0
Modem 212221	11/10/2022 9:00	11/10/2022 9:10	0.014	0
Modem 212221	11/10/2022 9:10	11/10/2022 9:20	0.014	0
Modem 212221	11/10/2022 9:20	11/10/2022 9:30	0.014	0
Modem 212221	11/10/2022 9:30	11/10/2022 9:40	0.014	0
Modem 212221	11/10/2022 9:40	11/10/2022 9:50	0.014	0
Modem 212221	11/10/2022 9:50	11/10/2022 10:00	0.014	0
Modem 212221	11/10/2022 10:00	11/10/2022 10:10	0.014	0
Modem 212221	11/10/2022 10:10	11/10/2022 10:20	0.014	0
Modem 212221	11/10/2022 10:20	11/10/2022 10:30	0.014	0
Modem 212221	11/10/2022 10:30	11/10/2022 10:40	0.014	0
Modem 212221	11/10/2022 10:40	11/10/2022 10:50	0.014	0
Modem 212221	11/10/2022 10:50	11/10/2022 11:00	0.014	0
Modem 212221	11/10/2022 11:00	11/10/2022 11:10	0.014	0
Modem 212221	11/10/2022 11:10	11/10/2022 11:20	0.014	0
Modem 212221	11/10/2022 11:20	11/10/2022 11:30	0.014	0
Modem 212221	11/10/2022 11:30	11/10/2022 11:40	0.014	0
Modem 212221	11/10/2022 11:40	11/10/2022 11:50	0.014	0
Modem 212221	11/10/2022 11:50	11/10/2022 12:00	0.014	0
Modem 212221	11/10/2022 12:00	11/10/2022 12:10	0.014	0
Modem 212221	11/10/2022 12:10	11/10/2022 12:20	0.014	0
Modem 212221	11/10/2022 12:20	11/10/2022 12:30	0.014	0
Modem 212221	11/10/2022 12:30	11/10/2022 12:40	0.014	0
Modem 212221	11/10/2022 12:40	11/10/2022 12:50	0.014	0
Modem 212221	11/10/2022 12:50	11/10/2022 13:00	0.014	0
Modem 212221	11/10/2022 13:00	11/10/2022 13:10	0.014	0
Modem 212221	11/10/2022 13:10	11/10/2022 13:20	0.014	0
Modem 212221	11/10/2022 13:20	11/10/2022 13:30	0.014	0
Modem 212221	11/10/2022 13:30	11/10/2022 13:40	0.014	0
Modem 212221	11/10/2022 13:40	11/10/2022 13:50	0.014	0
Modem 212221	11/10/2022 13:50	11/10/2022 14:00	0.014	0
Modem 212221	11/10/2022 14:00	11/10/2022 14:10	0.014	0
Modem 212221	11/10/2022 14:10	11/10/2022 14:20	0.014	0
Modem 212221	11/10/2022 14:20	11/10/2022 14:30	0.014	0
Modem 212221	11/10/2022 14:30	11/10/2022 14:40	0.014	0
Modem 212221	11/10/2022 14:40	11/10/2022 14:50	0.014	0
Modem 212221	11/10/2022 14:50	11/10/2022 15:00	0.014	0
Modem 212221	11/10/2022 15:00	11/10/2022 15:10	0.014	0
Modem 212221	11/10/2022 15:10	11/10/2022 15:20	0.014	0
Modem 212221	11/10/2022 15:20	11/10/2022 15:30	0.014	0

Perimeter CAMP
470 Kent Avenue - Brooklyn, NY
BCP Site No.: C224053

Asset Name	Start Time	End Time	DT2 TWA (mg/m ³)	MR3K TWA (ppm)
Modem 50057	11/10/2022 7:00	11/10/2022 7:10	0.037	0
Modem 50057	11/10/2022 7:10	11/10/2022 7:20	0.037	0
Modem 50057	11/10/2022 7:20	11/10/2022 7:30	0.037	0
Modem 50057	11/10/2022 7:30	11/10/2022 7:40	0.037	0
Modem 50057	11/10/2022 7:40	11/10/2022 7:50	0.037	0
Modem 50057	11/10/2022 7:50	11/10/2022 8:00	0.037	0
Modem 50057	11/10/2022 8:00	11/10/2022 8:10	0.037	0
Modem 50057	11/10/2022 8:10	11/10/2022 8:20	0.037	0
Modem 50057	11/10/2022 8:20	11/10/2022 8:30	0.037	0
Modem 50057	11/10/2022 8:30	11/10/2022 8:40	0.037	0
Modem 50057	11/10/2022 8:40	11/10/2022 8:50	0.037	0
Modem 50057	11/10/2022 8:50	11/10/2022 9:00	0.037	0
Modem 50057	11/10/2022 9:00	11/10/2022 9:10	0.037	0
Modem 50057	11/10/2022 9:10	11/10/2022 9:20	0.037	0
Modem 50057	11/10/2022 9:20	11/10/2022 9:30	0.037	0
Modem 50057	11/10/2022 9:30	11/10/2022 9:40	0.037	0
Modem 50057	11/10/2022 9:40	11/10/2022 9:50	0.037	0
Modem 50057	11/10/2022 9:50	11/10/2022 10:00	0.037	0
Modem 50057	11/10/2022 10:00	11/10/2022 10:10	0.037	0
Modem 50057	11/10/2022 10:10	11/10/2022 10:20	0.037	0
Modem 50057	11/10/2022 10:20	11/10/2022 10:30	0.037	0
Modem 50057	11/10/2022 10:30	11/10/2022 10:40	0.037	0
Modem 50057	11/10/2022 10:40	11/10/2022 10:50	0.037	0
Modem 50057	11/10/2022 10:50	11/10/2022 11:00	0.037	0
Modem 50057	11/10/2022 11:00	11/10/2022 11:10	0.037	0
Modem 50057	11/10/2022 11:10	11/10/2022 11:20	0.037	0
Modem 50057	11/10/2022 11:20	11/10/2022 11:30	0.037	0
Modem 50057	11/10/2022 11:30	11/10/2022 11:40	0.037	0
Modem 50057	11/10/2022 11:40	11/10/2022 11:50	0.037	0
Modem 50057	11/10/2022 11:50	11/10/2022 12:00	0.037	0
Modem 50057	11/10/2022 12:00	11/10/2022 12:10	0.037	0
Modem 50057	11/10/2022 12:10	11/10/2022 12:20	0.037	0
Modem 50057	11/10/2022 12:20	11/10/2022 12:30	0.037	0
Modem 50057	11/10/2022 12:30	11/10/2022 12:40	0.037	0
Modem 50057	11/10/2022 12:40	11/10/2022 12:50	0.037	0
Modem 50057	11/10/2022 12:50	11/10/2022 13:00	0.037	0
Modem 50057	11/10/2022 13:00	11/10/2022 13:10	0.037	0
Modem 50057	11/10/2022 13:10	11/10/2022 13:20	0.037	0
Modem 50057	11/10/2022 13:20	11/10/2022 13:30	0.037	0
Modem 50057	11/10/2022 13:30	11/10/2022 13:40	0.037	0
Modem 50057	11/10/2022 13:40	11/10/2022 13:50	0.037	0
Modem 50057	11/10/2022 13:50	11/10/2022 14:00	0.037	0
Modem 50057	11/10/2022 14:00	11/10/2022 14:10	0.037	0
Modem 50057	11/10/2022 14:10	11/10/2022 14:20	0.037	0
Modem 50057	11/10/2022 14:20	11/10/2022 14:30	0.037	0
Modem 50057	11/10/2022 14:30	11/10/2022 14:40	0.037	0
Modem 50057	11/10/2022 14:40	11/10/2022 14:50	0.037	0
Modem 50057	11/10/2022 14:50	11/10/2022 15:00	0.037	0
Modem 50057	11/10/2022 15:00	11/10/2022 15:10	0.037	0
Modem 50057	11/10/2022 15:10	11/10/2022 15:20	0.037	0
Modem 50057	11/10/2022 15:20	11/10/2022 15:30	0.037	0

Perimeter CAMP
470 Kent Avenue - Brooklyn, NY
BCP Site No.: C224053

Asset Name	Start Time	End Time	DT2 TWA (mg/m ³)	MR3K TWA (ppm)
Modem 46495	11/10/2022 7:00	11/10/2022 7:10	0.01	0.014
Modem 46495	11/10/2022 7:10	11/10/2022 7:20	0.01	0.014
Modem 46495	11/10/2022 7:20	11/10/2022 7:30	0.01	0.014
Modem 46495	11/10/2022 7:30	11/10/2022 7:40	0.01	0.014
Modem 46495	11/10/2022 7:40	11/10/2022 7:50	0.01	0.014
Modem 46495	11/10/2022 7:50	11/10/2022 8:00	0.01	0.014
Modem 46495	11/10/2022 8:00	11/10/2022 8:10	0.01	0.014
Modem 46495	11/10/2022 8:10	11/10/2022 8:20	0.01	0.014
Modem 46495	11/10/2022 8:20	11/10/2022 8:30	0.01	0.014
Modem 46495	11/10/2022 8:30	11/10/2022 8:40	0.01	0.014
Modem 46495	11/10/2022 8:40	11/10/2022 8:50	0.01	0.014
Modem 46495	11/10/2022 8:50	11/10/2022 9:00	0.01	0.014
Modem 46495	11/10/2022 9:00	11/10/2022 9:10	0.01	0.014
Modem 46495	11/10/2022 9:10	11/10/2022 9:20	0.01	0.014
Modem 46495	11/10/2022 9:20	11/10/2022 9:30	0.01	0.014
Modem 46495	11/10/2022 9:30	11/10/2022 9:40	0.01	0.014
Modem 46495	11/10/2022 9:40	11/10/2022 9:50	0.01	0.014
Modem 46495	11/10/2022 9:50	11/10/2022 10:00	0.01	0.014
Modem 46495	11/10/2022 10:00	11/10/2022 10:10	0.01	0.014
Modem 46495	11/10/2022 10:10	11/10/2022 10:20	0.01	0.014
Modem 46495	11/10/2022 10:20	11/10/2022 10:30	0.01	0.014
Modem 46495	11/10/2022 10:30	11/10/2022 10:40	0.01	0.014
Modem 46495	11/10/2022 10:40	11/10/2022 10:50	0.01	0.014
Modem 46495	11/10/2022 10:50	11/10/2022 11:00	0.01	0.014
Modem 46495	11/10/2022 11:00	11/10/2022 11:10	0.01	0.014
Modem 46495	11/10/2022 11:10	11/10/2022 11:20	0.01	0.014
Modem 46495	11/10/2022 11:20	11/10/2022 11:30	0.01	0.014
Modem 46495	11/10/2022 11:30	11/10/2022 11:40	0.01	0.014
Modem 46495	11/10/2022 11:40	11/10/2022 11:50	0.01	0.014
Modem 46495	11/10/2022 11:50	11/10/2022 12:00	0.01	0.014
Modem 46495	11/10/2022 12:00	11/10/2022 12:10	0.01	0.014
Modem 46495	11/10/2022 12:10	11/10/2022 12:20	0.01	0.014
Modem 46495	11/10/2022 12:20	11/10/2022 12:30	0.01	0.014
Modem 46495	11/10/2022 12:30	11/10/2022 12:40	0.01	0.014
Modem 46495	11/10/2022 12:40	11/10/2022 12:50	0.01	0.014
Modem 46495	11/10/2022 12:50	11/10/2022 13:00	0.01	0.014
Modem 46495	11/10/2022 13:00	11/10/2022 13:10	0.01	0.014
Modem 46495	11/10/2022 13:10	11/10/2022 13:20	0.01	0.014
Modem 46495	11/10/2022 13:20	11/10/2022 13:30	0.01	0.014
Modem 46495	11/10/2022 13:30	11/10/2022 13:40	0.01	0.014
Modem 46495	11/10/2022 13:40	11/10/2022 13:50	0.01	0.014
Modem 46495	11/10/2022 13:50	11/10/2022 14:00	0.01	0.014
Modem 46495	11/10/2022 14:00	11/10/2022 14:10	0.01	0.014
Modem 46495	11/10/2022 14:10	11/10/2022 14:20	0.01	0.014
Modem 46495	11/10/2022 14:20	11/10/2022 14:30	0.01	0.014
Modem 46495	11/10/2022 14:30	11/10/2022 14:40	0.01	0.014
Modem 46495	11/10/2022 14:40	11/10/2022 14:50	0.01	0.014
Modem 46495	11/10/2022 14:50	11/10/2022 15:00	0.01	0.014
Modem 46495	11/10/2022 15:00	11/10/2022 15:10	0.01	0.014
Modem 46495	11/10/2022 15:10	11/10/2022 15:20	0.01	0.014
Modem 46495	11/10/2022 15:20	11/10/2022 15:30	0.01	0.014