

# LANGAN SITE OBSERVATION REPORT – Day 152

<b>CLIENT:</b> Gowanus Canal LLC and GowCan Owner, LLC <b>PROJECT No.:</b> 170295301 <b>PROJECT:</b> Gowanus Canal Northside <b>LOCATION:</b> Brooklyn, New York	<b>DATE:</b> Saturday, March 11, 2023 <b>WEATHER:</b> Rain, 37 to 43°F Wind: NNW @ 10-21mph <b>TIME:</b> 08:30 – 16:30 <b>BCP SITE ID:</b> C224080
<b>EQUIPMENT:</b> Komatsu PC 490 Excavator      Junttan PM20/25 Drill Rig Komatsu PC 240 Excavator      JLG HC3 Boom Lift Komatsu PC 78 US Excavator    Dynapac CA150 Compactor APE Model 23.2 Vibratory Hammer Komatsu Wheel Loader Junttan PM20US Drill Rig	<b>PRESENT AT SITE:</b> <b>Langan:</b> Gabriel Enriquez-Castro and Caroline Devin (Environmental), Ahmed Mahmoud (Geotechnical) <b>Urban Atelier Group (UAG):</b> Seth Anderson <b>Kingdom Associates, Inc. (Kingdom):</b> George Minchala <b>TT Mechanical Corp. (TT Mechanical):</b> Damien Sokol <b>New York State Department of Environmental Conservation (NYSDEC):</b> Sunlei Yang <b>Manhattan Concrete:</b> Mark Vutajek <b>G&amp;M Works Landscape Construction (G&amp;M):</b> Gino Latona
<b>OBSERVATIONS, DISCUSSIONS, TEST RESULTS, ETC.:</b> <p>Langan was on-site to document implementation of the New York State Department of Environmental Conservation (NYSDEC)-approved March 24, 2022 Remedial Action Work Plan (RAWP) for Brownfield Cleanup Program (BCP) Site No. C224080. Site Map 1 presents the Society Brooklyn and Sackett Place developments, which together comprise the BCP site.</p> <p><b>Site Activities</b></p> <ul style="list-style-type: none"> <li>Kingdom graded an about 12-foot-long by 8-foot-wide areas in the central part of Society Brooklyn to install components of the sub-membrane depressurization (SMD) System.             <ul style="list-style-type: none"> <li>Kingdom placed a geotextile membrane on top of the subgrade and placed ASTM #5 stone on top of the geotextile membrane.</li> </ul> </li> <li>Kingdom installed perforated piping wrapped with polyester filter sleeves for the SMD system in the western, central, and southern part of Society Brooklyn.             <ul style="list-style-type: none"> <li>Kingdom will use tile tape to seal the piping connections on the following work day (3/13/2023).</li> </ul> </li> <li>Langan used a peristaltic pump to develop monitoring well MW38-N. During development, Langan observed nonaqueous-phase liquid (NAPL) within the purged groundwater. Purged groundwater and NAPL was containerized in a 55-gallon drum for future off-site disposal.</li> <li>Langan collected groundwater samples from monitoring wells MW38A-N and MW38B-D as part of the Grossly Contaminated Material (GCM)/NAPL Investigation Work Plan implementation.             <ul style="list-style-type: none"> <li>Langan used an oil-water interface probe to gauge the depth to water and screen each well for NAPL. NAPL was not detected in monitoring wells MW38A-N and MW38B-D.</li> </ul> </li> </ul> <p><b>Import and Export Tracking</b></p> <ul style="list-style-type: none"> <li>No material was imported to the site.</li> <li>No material was exported from the site.</li> </ul>	
<b>Cc:</b> J. Hayes, M. Burke, P. Farnham, E. Adkins, A. Nesci	<b>By:</b> Gabriel Enriquez-Castro and Caroline Devin <b>Langan, D.P.C.</b>

Soil/Fill Export Summary			
Facility	Exported	Today	Total
Bayshore Soil Management Keasbey, NJ Non-Hazardous Soil/Fill	No. Loads	0	723
	Quantity (CY)	0	14,460
Bayshore Soil Management Keasbey, NJ Non-Hazardous MGP-Impacted Soil/Fill	No. Loads	0	79
	Quantity (CY)	0	1,580
Phase III Environmental Palmerton, PA Non-Hazardous Soil/Fill	No. Loads	0	58
	Quantity (CY)	0	1,160

Material Import Summary				
Facility	NYSDEC Approved Quantity (CY)	Imported	Today	Total
Stavola Construction Materials, Inc Bridgewater, NJ 2.5-inch Stone	1,000	No. Loads	0	8
		Quantity (CY)	0	160
87 19 <sup>th</sup> Avenue Astoria, NY 2.5-inch Stone	2,000	No. Loads	0	31
		Quantity (CY)	0	650
Impact Environmental Jersey City, NJ 0.5-inch Crushed Stone	5,000	No. Loads	0	167
		Quantity (CY)	0	3,340
Impact Environmental Lyndhurst, NJ 0.5-inch Crushed Stone	6,000	No. Loads	0	17
		Quantity (CY)	0	340
Impact Environmental Lyndhurst, NJ 0.75-inch Crushed Stone	4,000	No. Loads	0	26
		Quantity (CY)	0	520
Tilcon New York Inc. Wharton, NJ ASTM #5	3,500	No. Loads	0	39
		Quantity (CY)	0	780

### Sampling

- Langan collected two groundwater samples (MW38A-N\_031123 and MW38B-D\_031123) and a matrix spike/matrix spike duplicate sample set for laboratory analysis. The groundwater samples will be analyzed for Part 375/Target Compound List (TCL) volatile organic compounds (VOC), semivolatile organic compounds (SVOC), and cyanide by Alpha Analytical Laboratories in Westborough, MA.

### Community Air Monitoring

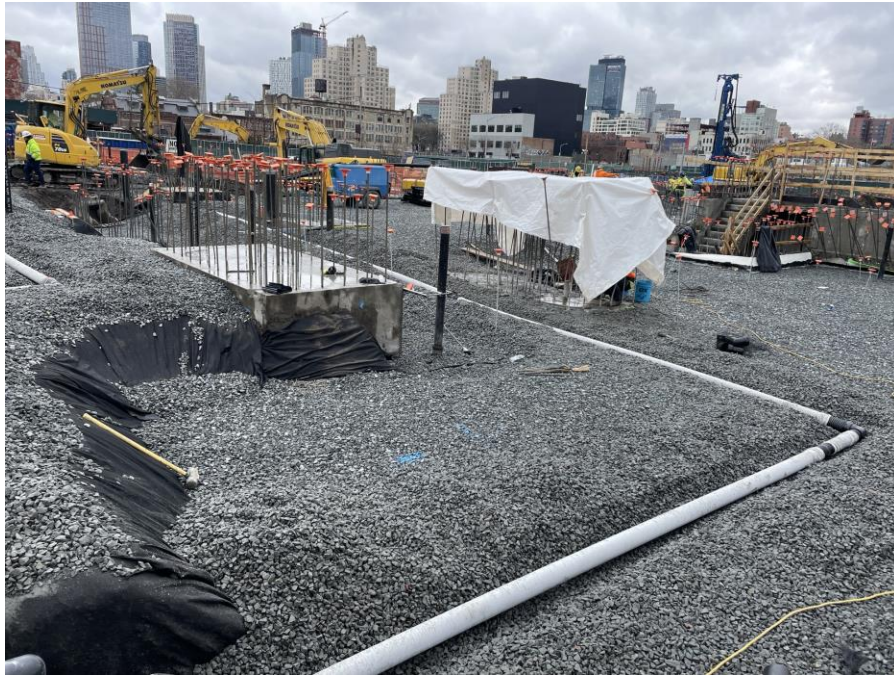
- Community Air Monitoring Program (CAMP) was not implemented due to persistent rain. Dust or odors associated with intrusive work were not observed or apparent.

### Anticipated Activities

- Kingdom will continue to install support of excavation (SOE) elements at Society Brooklyn and Sackett Place.
- Kingdom will continue excavation for structural pile cap installation at Society Brooklyn and Sackett Place.
- Kingdom will continue excavation for utilities at Society Brooklyn and Sackett Place.
- Kingdom will continue to install SMD system components at Society Brooklyn.

Cc:	J. Hayes, M. Burke, P. Farnham, E. Adkins, A. Nesci	By:	Gabriel Enriquez-Castro and Caroline Devin
			Langan, D.P.C.

## Site Photographs:



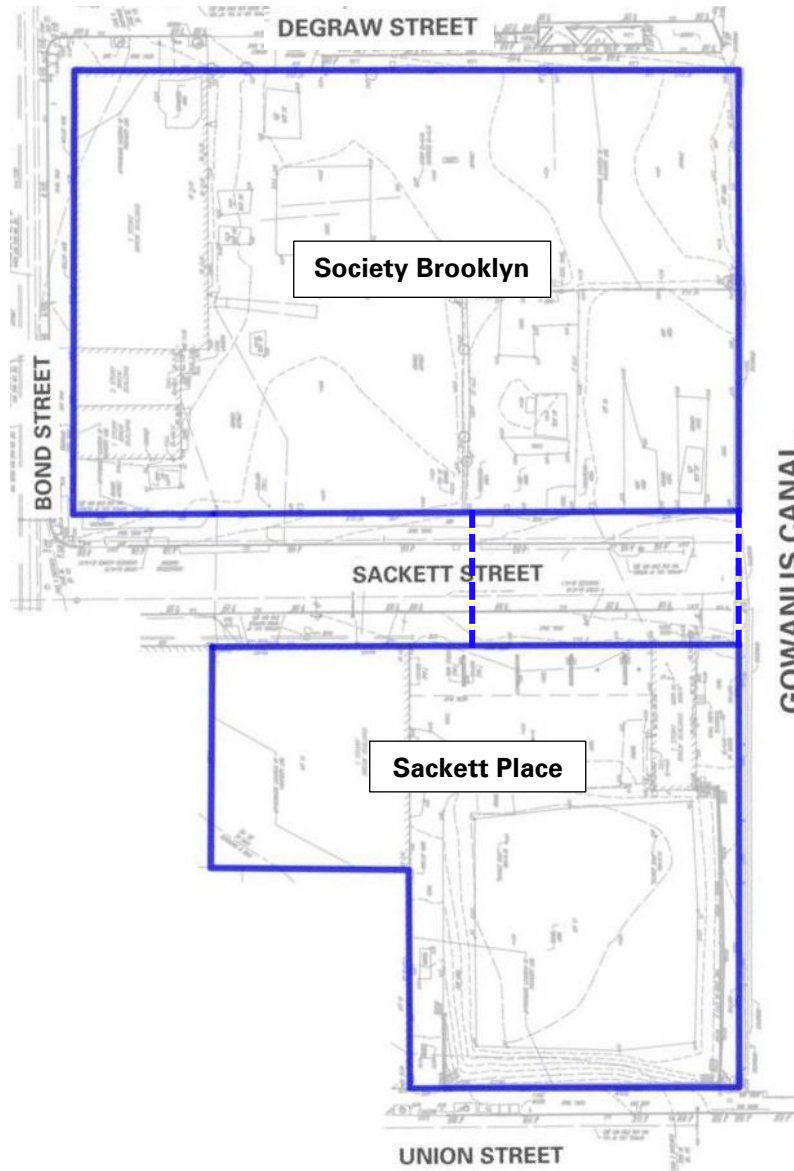
**Photo 1:** Kingdom installing SMD system piping in the southern part of Society Brooklyn (facing southeast)



**Photo 2:** Kingdom installing SMD system components in the central part of Society Brooklyn (facing west)

Cc:	J. Hayes, M. Burke, P. Farnham, E. Adkins, A. Nesci	By:	Gabriel Enriquez-Castro and Caroline Devin <b>Langan, D.P.C.</b>
-----	---	-----	---

**Site Map 1:**



**Legend**

- Approximate BCP site boundary
- - - Approximate construction fence boundary

**Notes**

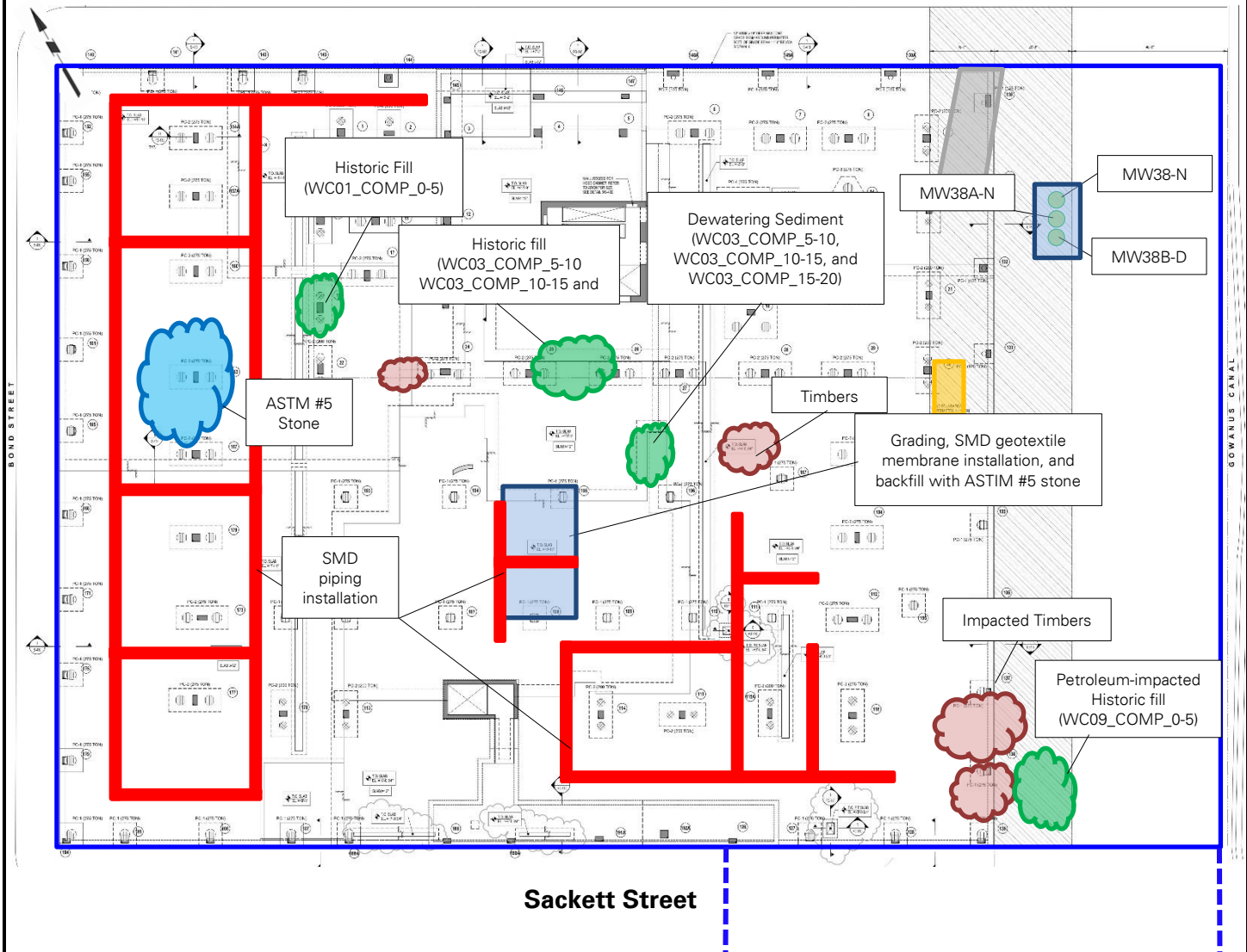
1. Base map adapted from 24 March 2022 RAWP, Figure 2 – Site Plan.
2. This Site Map is provided for context only; refer to the Northern (Society Brooklyn) and Southern (Sackett Place) Work Area Maps on the following pages for work and air monitoring location(s).

Cc:	J. Hayes, M. Burke, P. Farnham, E. Adkins, A. Nesci	By:	Gabriel Enriquez-Castro and Caroline Devin <b>Langan, D.P.C.</b>
-----	---	-----	---



## Site Map 2: Northern Work Area Map (Society Brooklyn)

Base map adapted from 1 April 2022 drawing FO-201.00, "Ground Floor Framing Plan" for Society Brooklyn, prepared by DeSimone Consulting Engineers.



### Legend:

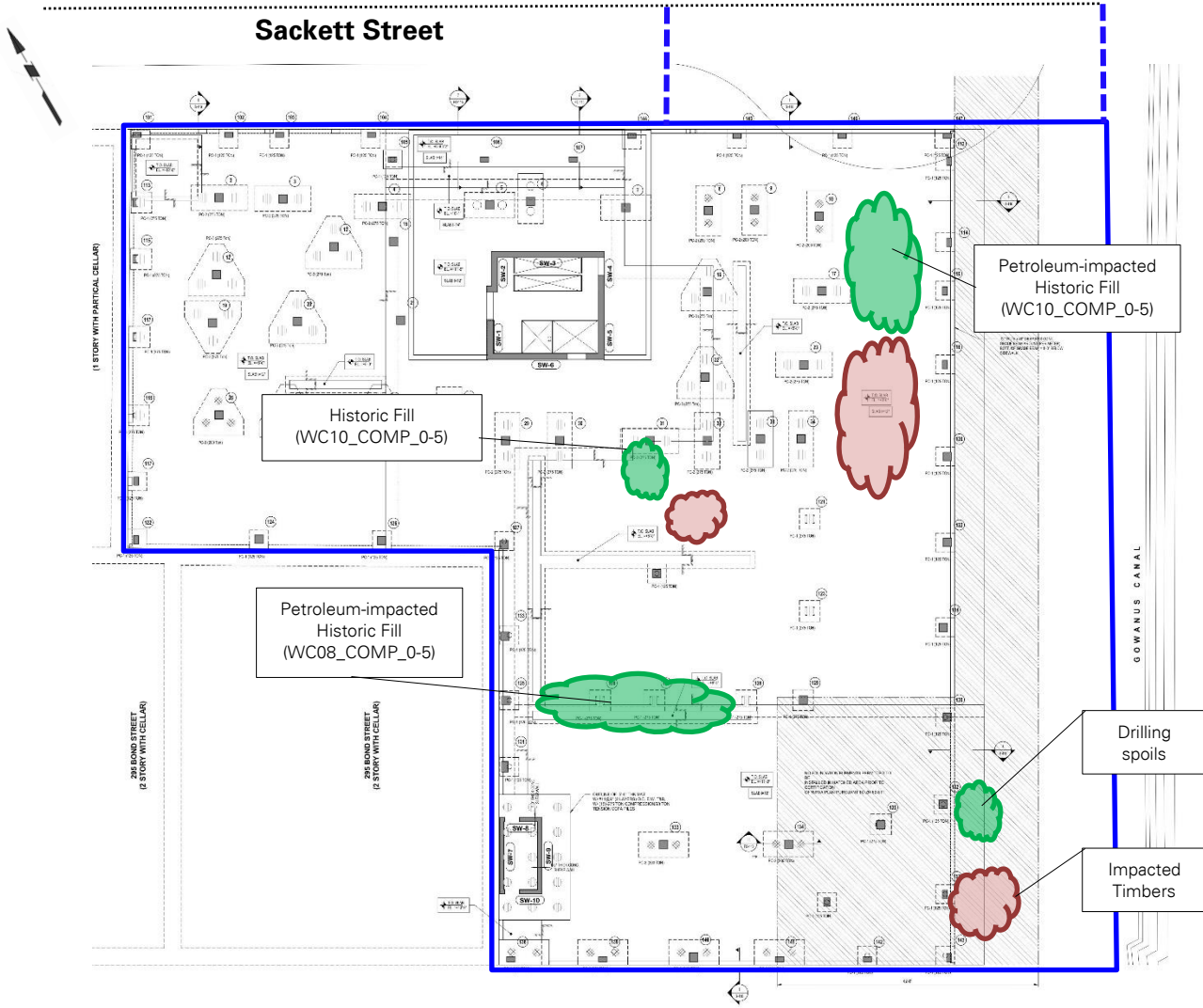
- Approximate site boundary
- Approximate construction fence boundary
- ⊗ Upwind air monitoring station
- ⊗ Downwind air monitoring station
- Approximate work area
- Approximate stabilized construction entrance
- Approximate soil/fill stockpile location
- Approximate import stockpile location
- Approximate C&D debris stockpile location
- Approximate location of 20 cubic yard scrap metal container
- Approximate location of groundwater monitoring well
- Approximate location of SMD piping installation

Cc: J. Hayes, M. Burke, P. Farnham, E. Adkins, A. Nesci

By: Gabriel Enriquez-Castro and Caroline Devin  
**Langan, D.P.C.**

### Site Map 3: Southern Work Area Map (Sackett Place)

Base map adapted from 1 April 2022 drawing FO-201.00, "Ground Floor Framing Plan" for Sackett Place, prepared by DeSimone Consulting Engineers.



#### Legend:

- Approximate site boundary
- Approximate construction fence boundary
- ⊗ Upwind air monitoring station
- ⊗ Downwind air monitoring station
- Approximate work area
- Approximate stabilized construction entrance
- ☁ Approximate soil/fill stockpile location
- ☁ Approximate import stockpile location
- ☁ Approximate C&D debris stockpile location
- Approximate location of groundwater monitoring well

Cc: J. Hayes, M. Burke, P. Farnham, E. Adkins, A. Nesci

By: Gabriel Enriquez-Castro and Caroline Devin  
Langan, D.P.C.