

LANGAN SITE OBSERVATION REPORT – Day 176

CLIENT: Gowanus Canal LLC, GowCan Owner, LLC, and Bayside Gowanus Owner, L.L.C. PROJECT No.: 170295301 PROJECT: Gowanus Canal Northside LOCATION: Brooklyn, New York	DATE: Saturday, April 15, 2023 WEATHER: Clear, 57 – 70 °F Wind: NE @ 9 – 15 mph TIME: 12:15 – 13:45 BCP SITE ID: C224080
EQUIPMENT: Komatsu PC 490 Excavator Komatsu PC 240 Excavator Komatsu PC 78 US Excavator Komatsu Wheel Loader Komatsu PC 490 Excavator Kearney Concrete Pump Truck	PRESENT AT SITE: Langan: Andrew Ashley (Environmental) Urban Atelier Group (UAG): Seth Anderson Kingdom Associates, Inc. (Kingdom): George Minchala
OBSERVATIONS, DISCUSSIONS, TEST RESULTS, ETC.: Langan was on-site to document implementation of the New York State Department of Environmental Conservation (NYSDEC)-approved March 24, 2022 Remedial Action Work Plan (RAWP) for Brownfield Cleanup Program (BCP) Site No. C224080. Site Map 1 presents the Society Brooklyn and Sackett Place developments, which together comprise the BCP site. Site Activities <ul style="list-style-type: none"> Kingdom placed concrete for the first-floor slab in the northern, western, and southern parts of Society Brooklyn. Kingdom installed a waterproofing/vapor barrier membrane (Preprufe 300R from GCP Applied Technologies) in the southern and western parts of Sackett Place. Kingdom installed vacuum monitoring point (VMP) MP02 in the northeastern part of Sackett Place. Kingdom placed concrete for a mud slab in the northeastern part of Sackett Place. Import and Export Tracking <ul style="list-style-type: none"> No material was imported to the site. No material was exported from the site. 	
Cc: J. Hayes, M. Burke, P. Farnham, E. Adkins, A. Nesci	By: Andrew Ashley Langan, D.P.C.

Soil/Fill Export Summary			
Facility	Exported	Today	Total
Bayshore Soil Management Keasbey, NJ Non-Hazardous Soil/Fill	No. Loads	0	723
	Quantity (CY)	0	14,460
Bayshore Soil Management Keasbey, NJ Non-Hazardous MGP-Impacted Soil/Fill	No. Loads	0	79
	Quantity (CY)	0	1,580
Phase III Environmental Palmerton, PA Non-Hazardous Soil/Fill	No. Loads	0	67
	Quantity (CY)	0	1,340

Material Import Summary				
Facility	NYSDEC Approved Quantity (CY)	Imported	Today	Total
Stavola Construction Materials, Inc Bridgewater, NJ 2.5-inch Stone	1,000	No. Loads	0	10
		Quantity (CY)	0	200
87 19 th Avenue Astoria, NY 2.5-inch Stone	2,000	No. Loads	0	31
		Quantity (CY)	0	650
Impact Environmental Jersey City, NJ 0.5-inch Crushed Stone	5,000	No. Loads	0	183
		Quantity (CY)	0	3,660
Impact Environmental Lyndhurst, NJ 0.5-inch Crushed Stone	6,000	No. Loads	0	47
		Quantity (CY)	0	940
Impact Environmental Lyndhurst, NJ 0.75-inch Crushed Stone	4,000	No. Loads	0	29
		Quantity (CY)	0	580
Tilcon New York Inc. Wharton, NJ ASTM #5	3,500	No. Loads	0	73
		Quantity (CY)	0	1,460

Sampling

- No samples were collected today.

Community Air Monitoring

- No ground-intrusive work was performed; therefore, community air monitoring was not implemented.

Anticipated Activities

- Kingdom will continue to install elements of the sub-membrane depressurization (SMD) system in Sackett Place.
- Kingdom will continue to export non-hazardous soil/fill.

Cc:	J. Hayes, M. Burke, P. Farnham, E. Adkins, A. Nesci	By:	Andrew Ashley
			Langan, D.P.C.

Site Photographs:



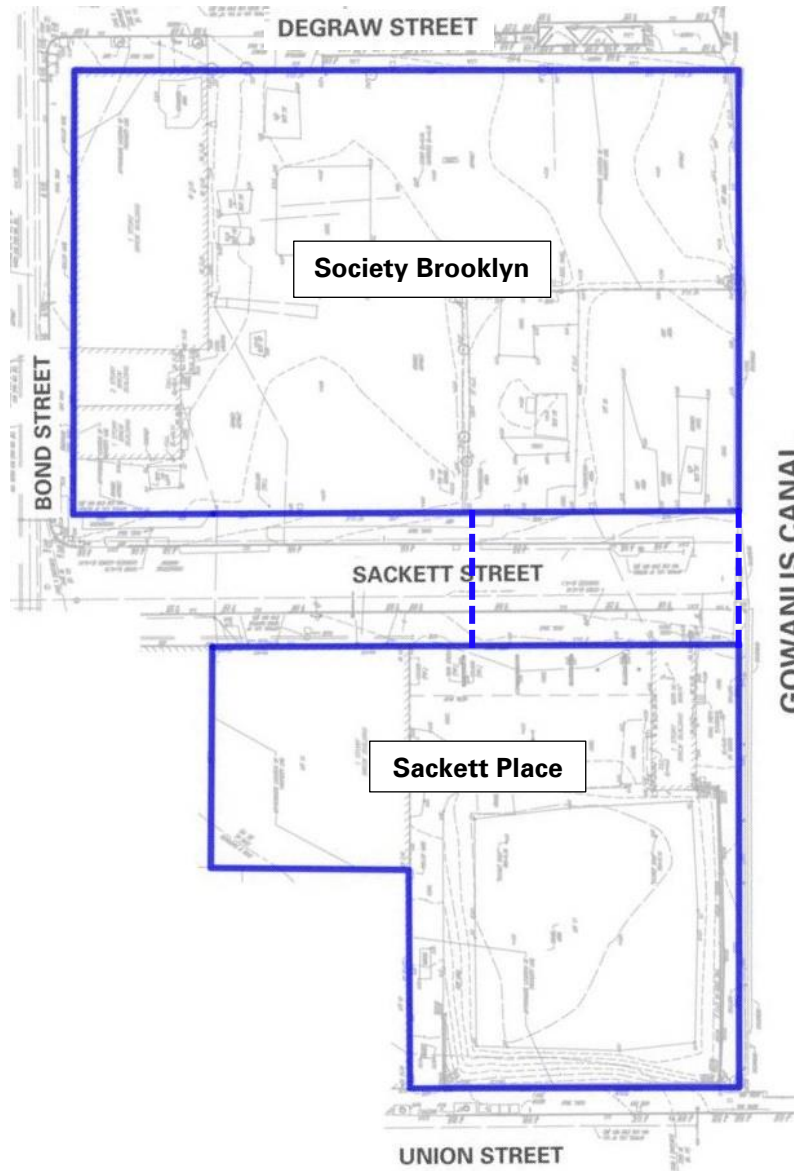
Photo 1: Kingdom placing concrete for the first-floor slab in the northern part of Society Brooklyn (facing north)



Photo 2: Kingdom placing concrete for a mud slab above the SMD system in the northeastern part of Sackett Place (facing northeast)

Cc:	J. Hayes, M. Burke, P. Farnham, E. Adkins, A. Nesci	By:	Andrew Ashley Langan, D.P.C.
-----	---	-----	---------------------------------

Site Map 1:



Legend

- Approximate BCP site boundary
- - - Approximate construction fence boundary

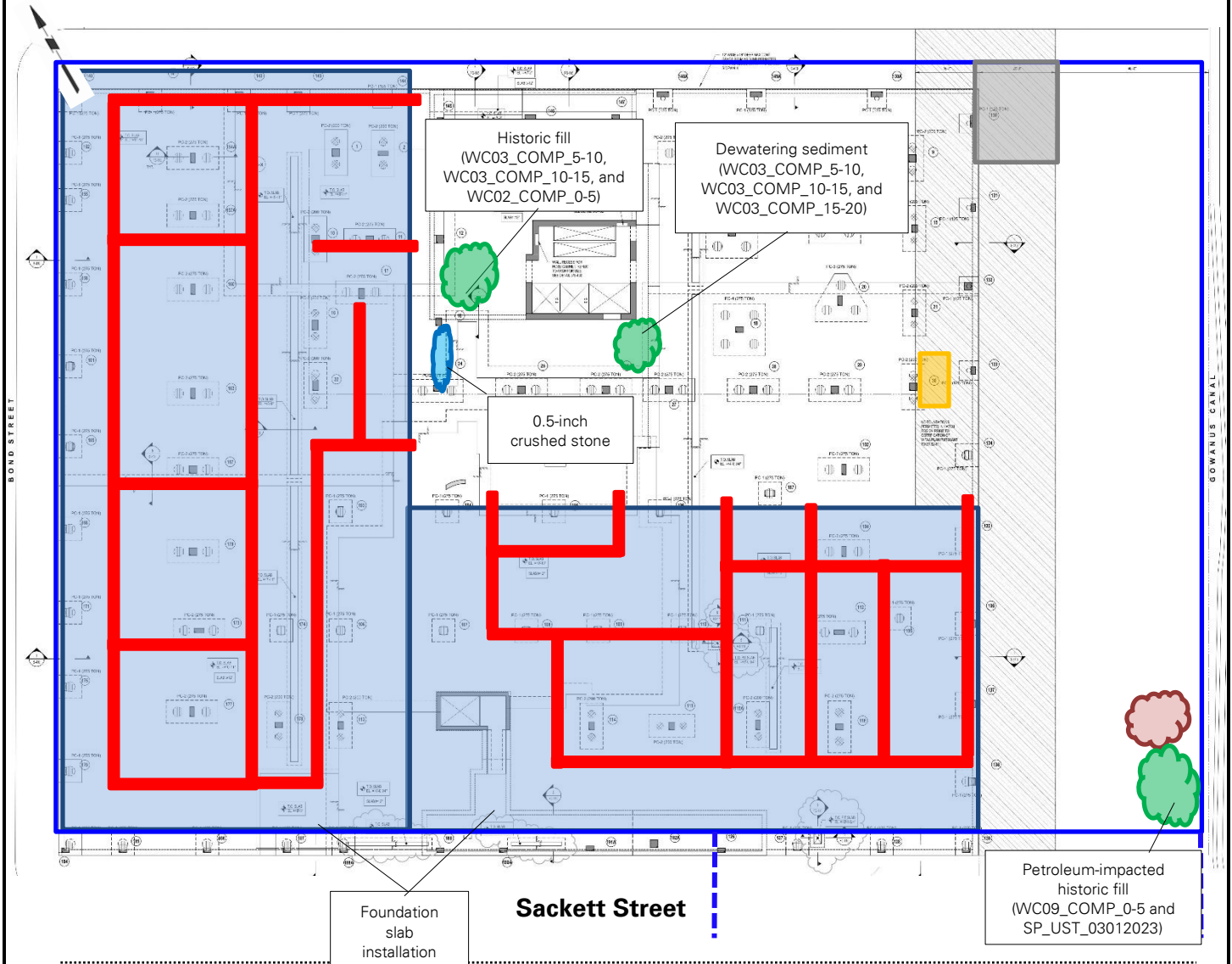
Notes

1. Base map adapted from 24 March 2022 RAWP, Figure 2 – Site Plan.
2. This Site Map is provided for context only; refer to the Northern (Society Brooklyn) and Southern (Sackett Place) Work Area Maps on the following pages for work and air monitoring location(s).

Cc:	J. Hayes, M. Burke, P. Farnham, E. Adkins, A. Nesci	By:	Andrew Ashley Langan, D.P.C.
-----	---	-----	---------------------------------

Site Map 2: Northern Work Area Map (Society Brooklyn)

Base map adapted from 1 April 2022 drawing FO-201.00, "Ground Floor Framing Plan" for Society Brooklyn, prepared by DeSimone Consulting Engineers.



Legend:

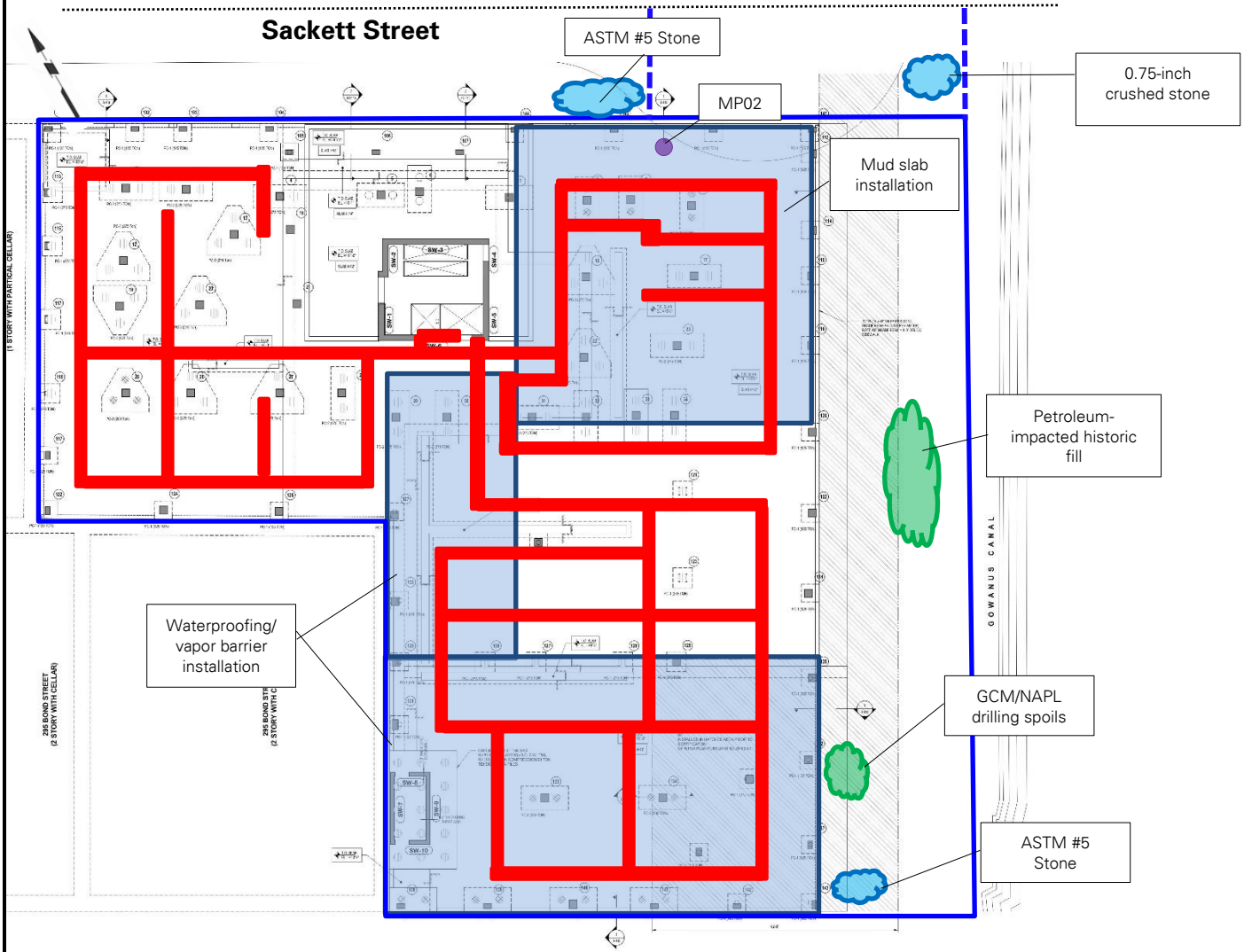
- | | | | |
|--|--|--|---|
| | Approximate site boundary | | Approximate soil/fill stockpile location |
| | Approximate construction fence boundary | | Approximate import stockpile location |
| | Upwind air monitoring station | | Approximate C&D debris stockpile location |
| | Downwind air monitoring station | | Approximate location of 20 cubic yard scrap metal container |
| | Approximate work area | | Approximate location of SMD piping installation |
| | Approximate stabilized construction entrance | | |

Cc: J. Hayes, M. Burke, P. Farnham, E. Adkins, A. Nesci

By: Andrew Ashley
 Langan, D.P.C.

Site Map 3: Southern Work Area Map (Sackett Place)

Base map adapted from 1 April 2022 drawing FO-201.00, "Ground Floor Framing Plan" for Sackett Place, prepared by DeSimone Consulting Engineers.



Legend:

- Approximate site boundary
- - - Approximate construction fence boundary
- ⊗ Upwind air monitoring station
- ⊗ Downwind air monitoring station
- Approximate work area
- Approximate stabilized construction entrance
- Approximate soil/fill stockpile location
- Approximate import stockpile location
- Approximate C&D debris stockpile location
- Approximate location of VMP Installation
- Approximate location of SMD piping installation

Cc: J. Hayes, M. Burke, P. Farnham, E. Adkins, A. Nesci

By: Andrew Ashley
Langan, D.P.C.