

LANGAN

SITE OBSERVATION REPORT – Day 180

CLIENT: Gowanus Canal LLC, GowCan Owner, LLC, and Bayside Gowanus Owner, L.L.C.	DATE: Thursday, April 20, 2023
PROJECT No.: 170295301	WEATHER: Clear, 60-61 °F Wind: SW @ 7 – 10 mph
PROJECT: Gowanus Canal Northside	TIME: 14:00 – 16:30
LOCATION: Brooklyn, New York	BCP SITE ID: C224080
EQUIPMENT: Komatsu PC 490 Excavator Komatsu PC 240 Excavator Komatsu PC 78 US Excavator Komatsu Wheel Loader Komatsu PC 490 Excavator	PRESENT AT SITE: Langan: Lauren Roper (Environmental) Urban Atelier Group (UAG): Seth Anderson Kingdom Associates, Inc. (Kingdom): George Minchala WSP on behalf of New York State Department of Environmental Conservation (NYSDEC): Chuck Porreca Manhattan Concrete: Mark Vutajek
OBSERVATIONS, DISCUSSIONS, TEST RESULTS, ETC.: <p>Langan was on-site to document implementation of the New York State Department of Environmental Conservation (NYSDEC)-approved March 24, 2022 Remedial Action Work Plan (RAWP) for Brownfield Cleanup Program (BCP) Site No. C224080. Site Map 1 presents the Society Brooklyn and Sackett Place developments, which together comprise the BCP site.</p> <p>Site Activities</p> <ul style="list-style-type: none">Kingdom installed a waterproofing/vapor barrier membrane (Preprufe 300R from GCP Applied Technologies) in the northern part of Sackett Place. <p>Import and Export Tracking</p> <ul style="list-style-type: none">No material was imported to the site.No material was exported from the site.	
Cc: J. Hayes, M. Burke, P. Farnham, E. Adkins, A. Nesci	By: Lauren Roper Langan, D.P.C.

Soil/Fill Export Summary			
Facility	Exported	Today	Total
Bayshore Soil Management Keasbey, NJ Non-Hazardous Soil/Fill	No. Loads	0	731
	Quantity (CY)	0	14,620
Bayshore Soil Management Keasbey, NJ Non-Hazardous MGP-Impacted Soil/Fill	No. Loads	0	79
	Quantity (CY)	0	1,580
Phase III Environmental Palmerton, PA Non-Hazardous Soil/Fill	No. Loads	0	67
	Quantity (CY)	0	1,340

Material Import Summary				
Facility	NYSDEC Approved Quantity (CY)	Imported	Today	Total
Stavola Construction Materials, Inc Bridgewater, NJ 2.5-inch Stone	1,000	No. Loads	0	12
		Quantity (CY)	0	240
87 19 th Avenue Astoria, NY 2.5-inch Stone	2,000	No. Loads	0	31
		Quantity (CY)	0	650
Impact Environmental Jersey City, NJ 0.5-inch Crushed Stone	5,000	No. Loads	0	183
		Quantity (CY)	0	3,660
Impact Environmental Lyndhurst, NJ 0.5-inch Crushed Stone	6,000	No. Loads	0	47
		Quantity (CY)	0	940
Impact Environmental Lyndhurst, NJ 0.75-inch Crushed Stone	4,000	No. Loads	0	29
		Quantity (CY)	0	580
Tilcon New York Inc. Wharton, NJ ASTM #5	3,500	No. Loads	0	73
		Quantity (CY)	0	1,460

Sampling

- Langan collected a sample of treated groundwater from the dewatering system effluent (DEW_17_042023). The sample will be analyzed for parameters listed in the State Pollution Discharge Elimination System (SPDES) Permit Equivalent by York Analytical Laboratories in Stratford, CT.

Community Air Monitoring

- No ground-intrusive work was performed; therefore, community air monitoring was not implemented.

Anticipated Activities

- Kingdom will continue to install the waterproofing/vapor barrier membrane at Sackett Place.

Cc:	J. Hayes, M. Burke, P. Farnham, E. Adkins, A. Nesci	By:	Lauren Roper
			Langan, D.P.C.

Site Photographs:



Photo 1: Kingdom installing the waterproofing/vapor barrier membrane in the northern part of Sackett Place (facing northeast)

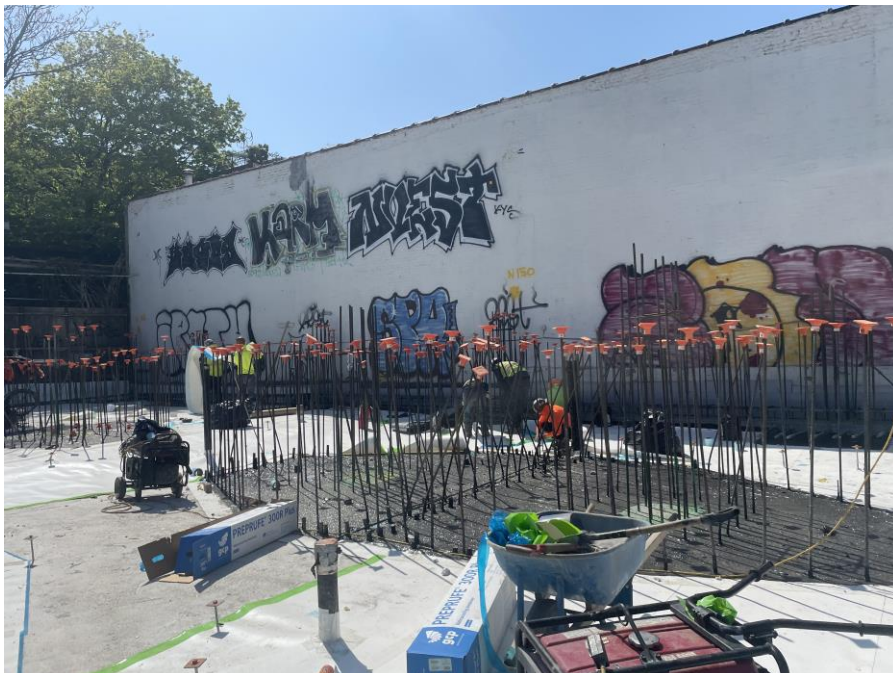
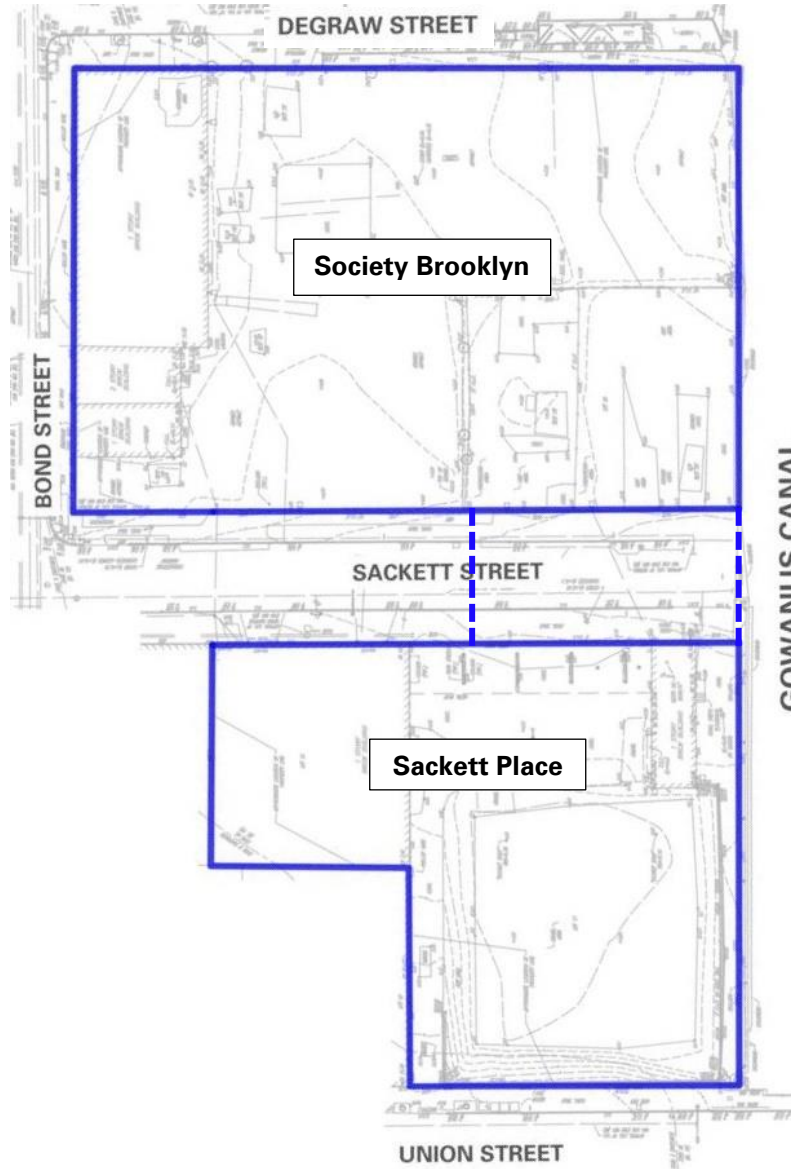


Photo 2: Kingdom installing the waterproofing/vapor barrier membrane in the northern part of Sackett Place (facing southwest)

Cc:	J. Hayes, M. Burke, P. Farnham, E. Adkins, A. Nesci	By:	Lauren Roper Langan, D.P.C.
-----	---	-----	---------------------------------------

Site Map 1:



Legend

- Approximate BCP site boundary
- - - Approximate construction fence boundary

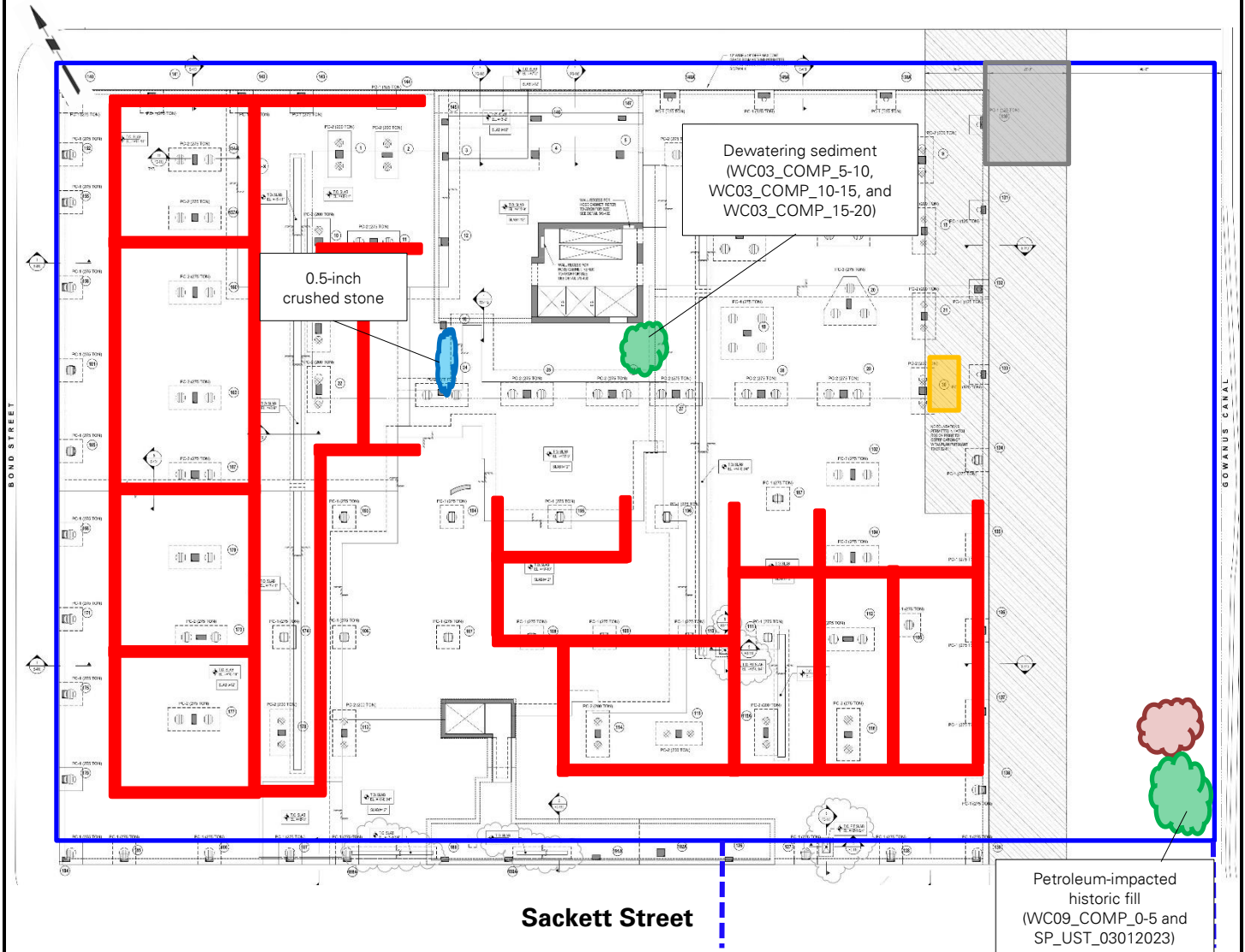
Notes

1. Base map adapted from 24 March 2022 RAWP, Figure 2 – Site Plan.
2. This Site Map is provided for context only; refer to the Northern (Society Brooklyn) and Southern (Sackett Place) Work Area Maps on the following pages for work and air monitoring location(s).












Cc:	J. Hayes, M. Burke, P. Farnham, E. Adkins, A. Nesci	By:	Lauren Roper Langan, D.P.C.
-----	---	-----	---------------------------------------

Site Map 2: Northern Work Area Map (Society Brooklyn)

Base map adapted from 1 April 2022 drawing FO-201.00, "Ground Floor Framing Plan" for Society Brooklyn, prepared by DeSimone Consulting Engineers.



Legend:

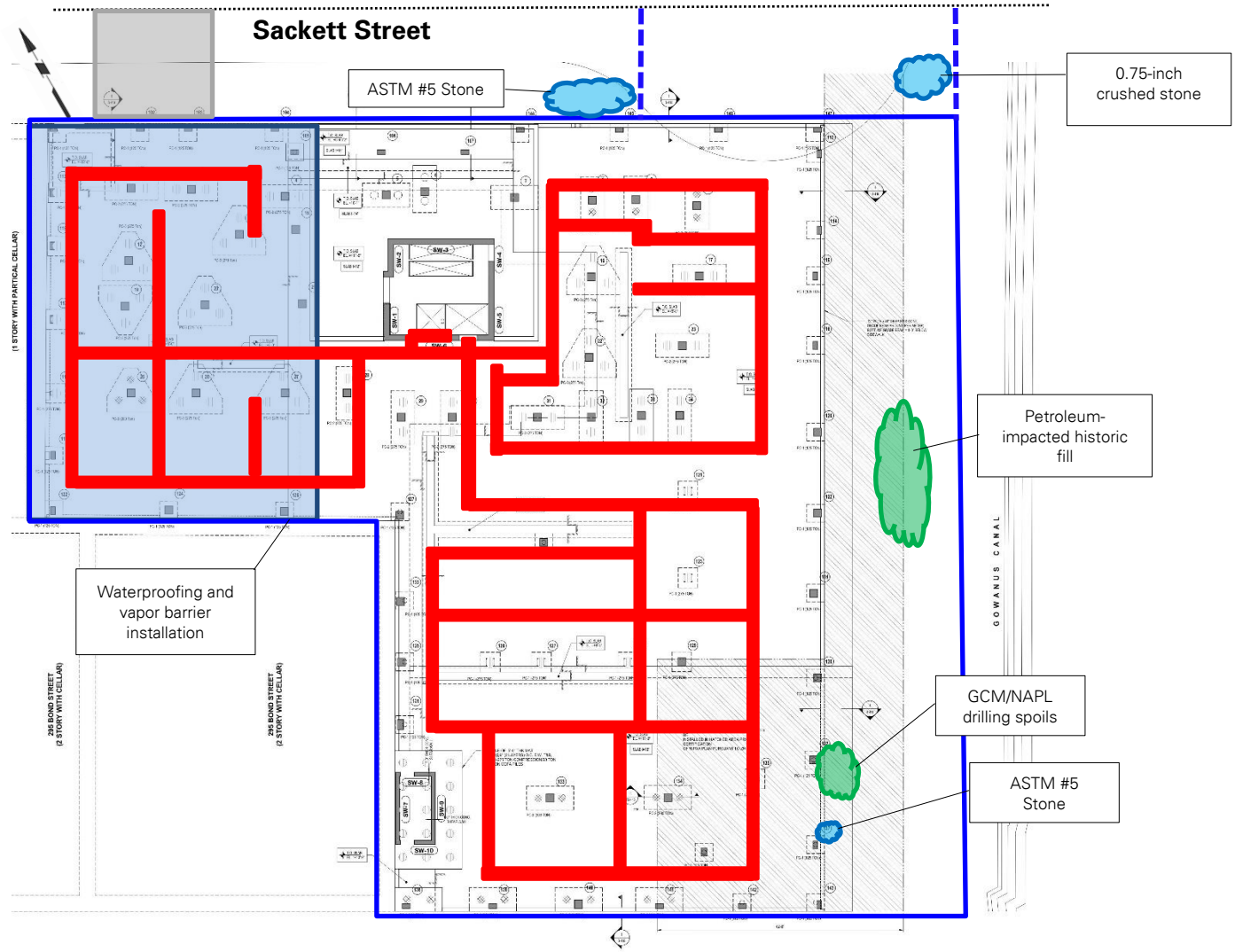
- | | | | |
|---|--|--|---|
|  | Approximate site boundary |  | Approximate soil/fill stockpile location |
|  | Approximate construction fence boundary |  | Approximate import stockpile location |
|  | Upwind air monitoring station |  | Approximate C&D debris stockpile location |
|  | Downwind air monitoring station |  | Approximate location of 20 cubic yard scrap metal container |
|  | Approximate work area |  | Approximate location of SMD piping installation |
|  | Approximate stabilized construction entrance | | |

Cc: J. Hayes, M. Burke, P. Farnham, E. Adkins, A. Nesci

By: Lauren Roper
 Langan, D.P.C.

Site Map 3: Southern Work Area Map (Sackett Place)

Base map adapted from 1 April 2022 drawing FO-201.00, "Ground Floor Framing Plan" for Sackett Place, prepared by DeSimone Consulting Engineers.



Legend:

- Approximate site boundary
- Approximate construction fence boundary
- ⊗ Upwind air monitoring station
- ⊗ Downwind air monitoring station
- Approximate work area
- Approximate stabilized construction entrance
- Approximate soil/fill stockpile location
- Approximate import stockpile location
- Approximate C&D debris stockpile location
- Approximate location of SMD piping installation

Cc: J. Hayes, M. Burke, P. Farnham, E. Adkins, A. Nesci

By: Lauren Roper
Langan, D.P.C.