

# LANGAN SITE OBSERVATION REPORT – Day 188

<b>CLIENT:</b> Gowanus Canal LLC, GowCan Owner, LLC, and Bayside Gowanus Owner, L.L.C.  <b>PROJECT No.:</b> 170295301  <b>PROJECT:</b> Gowanus Canal Northside  <b>LOCATION:</b> Brooklyn, New York	<b>DATE:</b> Tuesday, May 2, 2023  <b>WEATHER:</b> Rain, 46-57 °F Wind: WSW @ 9 – 22 mph  <b>TIME:</b> 06:45 – 17:45  <b>BCP SITE ID:</b> C224080
<b>EQUIPMENT:</b> Komatsu PC 490 Excavator Komatsu PC 240 Excavator Komatsu PC 78 US Excavator Komatsu Wheel Loader Komatsu PC 490 Excavator	<b>PRESENT AT SITE:</b> <b>Langan:</b> Lauren Roper (Environmental) <b>Urban Atelier Group (UAG):</b> Seth Anderson <b>Kingdom Associates, Inc. (Kingdom):</b> George Minchala <b>WSP on behalf of New York State Department of Environmental Conservation (NYSDEC):</b> Chuck Porreca
<b>OBSERVATIONS, DISCUSSIONS, TEST RESULTS, ETC.:</b>  Langan was on-site to document implementation of the New York State Department of Environmental Conservation (NYSDEC)-approved March 24, 2022 Remedial Action Work Plan (RAWP) for Brownfield Cleanup Program (BCP) Site No. C224080. Site Map 1 presents the Society Brooklyn and Sackett Place developments, which together comprise the BCP site.  <b>Site Activities</b> <ul style="list-style-type: none"> <li>Kingdom imported 3 truckloads of ASTM #5 virgin quarry stone. The stone will be used for the sub-membrane depressurization (SMD) system installation. See material tracking section for details.</li> <li>Kingdom exported non-hazardous historic fill/soil from waste characterization cell WC03 (WC03_COMP_10-15 and WC03_COMP_15-20) using permitted tri-axle trucks for off-site disposal. See material tracking section for details.</li> <li>Kingdom graded an about 15-foot-long by 5-foot-wide area in the northeastern part of Society Brooklyn to install components of the SMD system.             <ul style="list-style-type: none"> <li>Kingdom placed a geotextile membrane on top of the subgrade and placed ASTM #5 stone on top of the geotextile membrane.</li> </ul> </li> <li>Kingdom installed perforated piping wrapped with polyester filter sleeves for the SMD system in the northeastern part of Society Brooklyn.             <ul style="list-style-type: none"> <li>Kingdom backfilled around the perforated piping with ASTM #5 virgin quarry stone.</li> </ul> </li> <li>Kingdom placed concrete for the first-floor slab at Sackett Place.</li> <li>Kingdom applied Petrofix (a finely ground powdered activated carbon from Regenesys), water, and an electron acceptor blend to the base of Remedial Excavation Area No. 1 to treat petroleum impacts in soil and groundwater. About 80 gallons of reagent were applied to the base of the excavation.</li> <li>Kingdom placed concrete for a mud slab in the northern and northeastern parts of Society Brooklyn.</li> </ul>	
<b>Cc:</b> J. Hayes, M. Burke, P. Farnham, E. Adkins, A. Nesci	<b>By:</b> Lauren Roper  <b>Langan, D.P.C.</b>

## Import and Export Tracking

- Kingdom imported 3 truckloads of ASTM #5 virgin quarry stone from Tilcon New York Inc.'s Mt. Hope quarry in Wharton, NJ.
- Kingdom exported 4 truckloads of non-hazardous historic fill/soil from waste characterization cell WC03 (WC03\_COMP\_10-15 and WC03\_COMP\_15-20) to Bayshore Soil Management (BSM) in Keasbey, NJ.

Soil/Fill Export Summary			
Facility	Exported	Today	Total
Bayshore Soil Management Keasbey, NJ Non-Hazardous Soil/Fill	No. Loads	4	739
	Quantity (CY)	80	14,780
Bayshore Soil Management Keasbey, NJ Non-Hazardous MGP-Impacted Soil/Fill	No. Loads	0	79
	Quantity (CY)	0	1,580
Phase III Environmental Palmerton, PA Non-Hazardous Soil/Fill	No. Loads	0	67
	Quantity (CY)	0	1,340

Material Import Summary				
Facility	NYSDEC Approved Quantity (CY)	Imported	Today	Total
Stavola Construction Materials, Inc Bridgewater, NJ 2.5-inch Stone	1,000	No. Loads	0	14
		Quantity (CY)	0	280
87 19 <sup>th</sup> Avenue Astoria, NY 2.5-inch Stone	2,000	No. Loads	0	31
		Quantity (CY)	0	650
Impact Environmental Jersey City, NJ 0.5-inch Crushed Stone	5,000	No. Loads	0	183
		Quantity (CY)	0	3,660
Impact Environmental Lyndhurst, NJ 0.5-inch Crushed Stone	6,000	No. Loads	0	48
		Quantity (CY)	0	960
Impact Environmental Lyndhurst, NJ 0.75-inch Crushed Stone	4,000	No. Loads	0	29
		Quantity (CY)	0	580
Tilcon New York Inc. Wharton, NJ ASTM #5	3,500	No. Loads	3	80
		Quantity (CY)	60	1,600

## Sampling

- Langan collected one documentation endpoint sample (DS05\_EI\_-6) from the base of excavation in the central part of Remedial Excavation No. 1, in the northern part of Society Brooklyn. The sample will be analyzed for Part 375/Target Compound List (TCL) volatile organic compounds (VOC), semivolatile organic compounds (SVOC), Target Analyte List (TAL) metals (including hexavalent/trivalent chromium), and per- and polyfluoroalkyl substances (PFAS) by Alpha Analytical Laboratories in Westborough, MA.

## Community Air Monitoring

- Due to persistent rain, community air monitoring was not implemented. No dust or odor were apparent on-site.

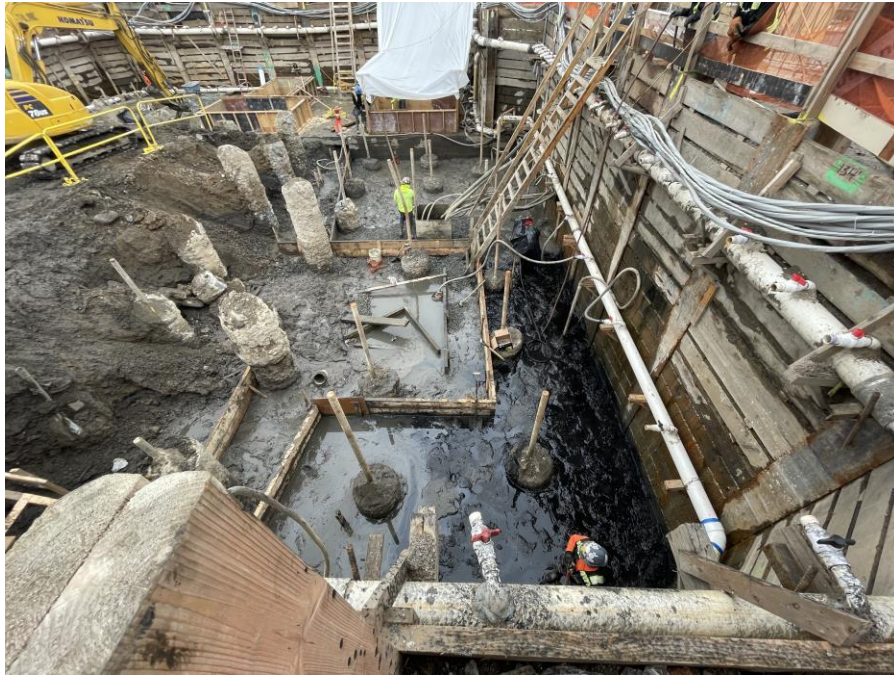
Cc:	J. Hayes, M. Burke, P. Farnham, E. Adkins, A. Nesci	By:	Lauren Roper
			Langan, D.P.C.

### Anticipated Activities

- Kingdom will continue excavation for the north cellar at Society Brooklyn.
- Kingdom will continue to apply Petrofix in a portion of the north cellar at Society Brooklyn.
- Kingdom will continue installing components of the SMD systems.

Cc:	J. Hayes, M. Burke, P. Farnham, E. Adkins, A. Nesci	By:	Lauren Roper <b>Langan, D.P.C.</b>
-----	---	-----	---------------------------------------

## Site Photographs:



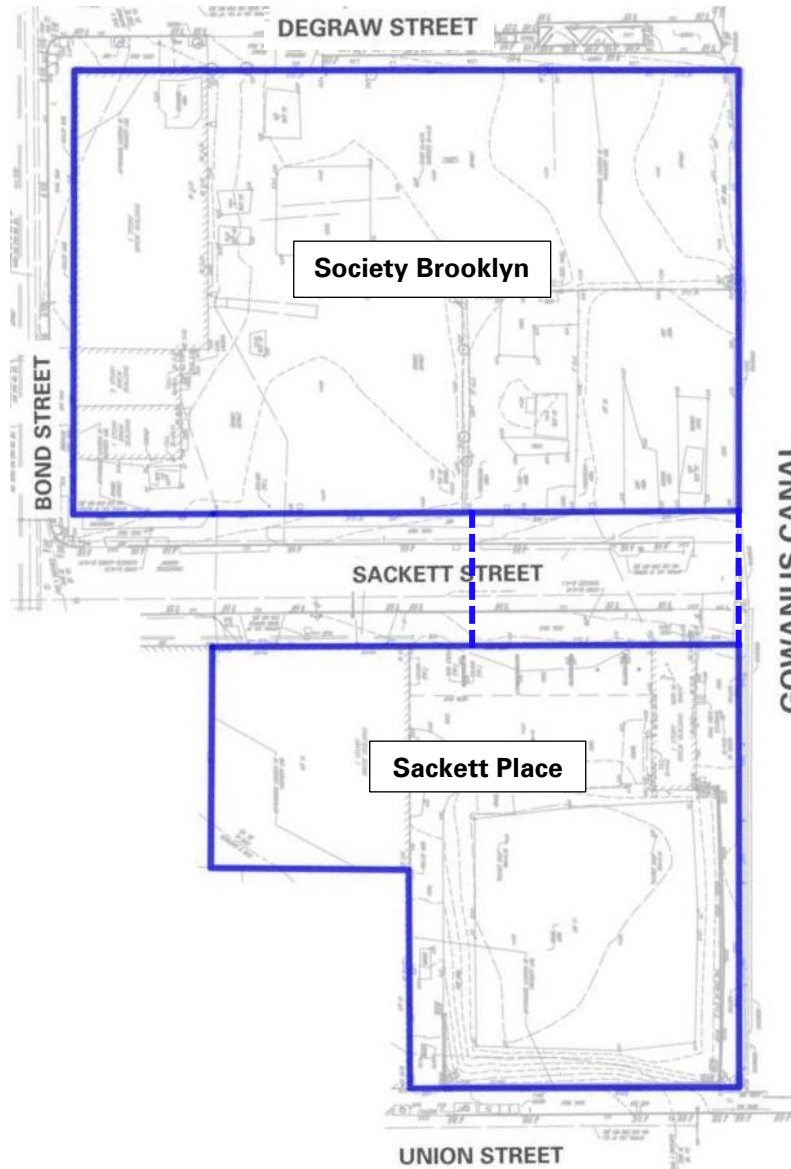
**Photo 1:** Kingdom applying Petrofix reagent to the base of Remedial Excavation Area No. 1 in the northern part of Society Brooklyn (facing west)



**Photo 2:** Kingdom exporting non-hazardous soil/fill in permitted tri-axle trucks in the northern part of Society Brooklyn (facing west)

Cc:	J. Hayes, M. Burke, P. Farnham, E. Adkins, A. Nesci	By:	Lauren Roper <b>Langan, D.P.C.</b>
-----	---	-----	---------------------------------------

**Site Map 1:**



**Legend**

- Approximate BCP site boundary
- - - Approximate construction fence boundary

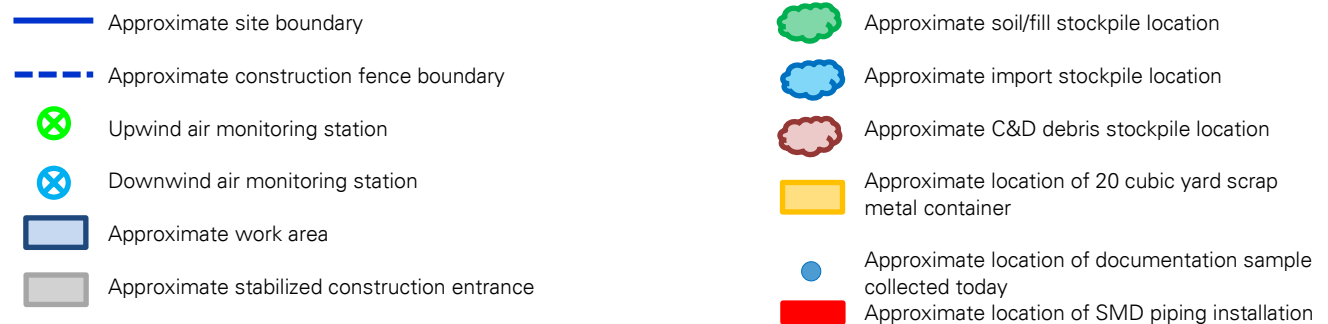
**Notes**

1. Base map adapted from 24 March 2022 RAWP, Figure 2 – Site Plan.
2. This Site Map is provided for context only; refer to the Northern (Society Brooklyn) and Southern (Sackett Place) Work Area Maps on the following pages for work and air monitoring location(s).

Cc:	J. Hayes, M. Burke, P. Farnham, E. Adkins, A. Nesci	By:	Lauren Roper <b>Langan, D.P.C.</b>
-----	---	-----	---------------------------------------



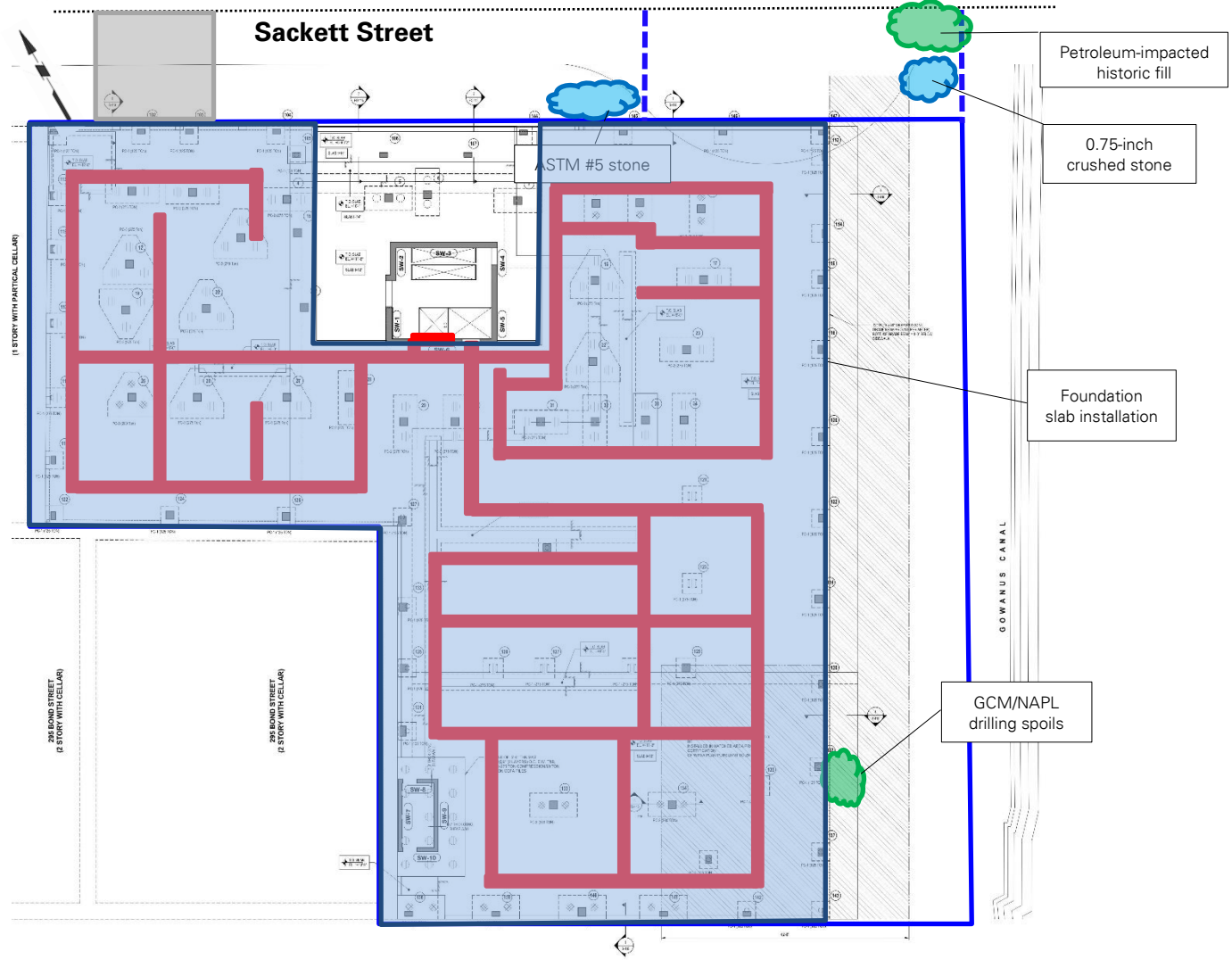
Base map adapted from 1 April 2022 drawing FO-201.00, "Ground Floor Framing Plan" for Society Brooklyn, prepared by DeSimone Consulting Engineers.



By:	Lauren Roper
	<b>Langan, D.P.C.</b>

### Site Map 3: Southern Work Area Map (Sackett Place)

Base map adapted from 1 April 2022 drawing FO-201.00, "Ground Floor Framing Plan" for Sackett Place, prepared by DeSimone Consulting Engineers.



Cc: J. Hayes, M. Burke, P. Farnham, E. Adkins, A. Nesci

By: Lauren Roper  
Langan, D.P.C.