

LANGAN

SITE OBSERVATION REPORT – Day 204

CLIENT: Gowanus Canal LLC, GowCan Owner, LLC, and Bayside Gowanus Owner, L.L.C.	DATE: Saturday, May 20, 2023
PROJECT No.: 170295301	WEATHER: Rain, 58 – 65 °F Wind: NE @ 6 – 15 mph
PROJECT: Gowanus Canal Northside	TIME: 06:30 – 18:15
LOCATION: Brooklyn, New York	BCP SITE ID: C224080
EQUIPMENT: Komatsu PC 490 Excavator Komatsu PC 240 Excavator Komatsu PC 78 US Excavator Komatsu Wheel Loader Komatsu PC 490 Excavator	PRESENT AT SITE: Langan: Ahmed Mahmoud (Geotechnical/Environmental) Urban Atelier Group (UAG): Seth Anderson Kingdom Associates, Inc. (Kingdom): George Minchala
OBSERVATIONS, DISCUSSIONS, TEST RESULTS, ETC.: <p>Langan was on-site to document implementation of the New York State Department of Environmental Conservation (NYSDEC)-approved March 24, 2022 Remedial Action Work Plan (RAWP) for Brownfield Cleanup Program (BCP) Site No. C224080. Site Map 1 presents the Society Brooklyn and Sackett Place developments, which together comprise the BCP site.</p> <p>Site Activities</p> <ul style="list-style-type: none">Kingdom installed a waterproofing/vapor barrier membrane (PREPRUFE 300R from GCP Applied Technologies) in the northeastern part of Society Brooklyn. <p>Import and Export Tracking</p> <ul style="list-style-type: none">No material was imported to the site.No material was exported from the site.	
Cc: J. Hayes, M. Burke, P. Farnham, E. Adkins, A. Nesci	By: Ahmed Mahmoud Langan, D.P.C.

Soil/Fill Export Summary			
Facility	Exported	Today	Total
Bayshore Soil Management Keasbey, NJ Non-Hazardous Soil/Fill	No. Loads	0	739
	Quantity (CY)	0	14,780
Bayshore Soil Management Keasbey, NJ Non-Hazardous MGP-Impacted Soil/Fill	No. Loads	0	79
	Quantity (CY)	0	1,580
Phase III Environmental Palmerton, PA Non-Hazardous Soil/Fill	No. Loads	0	67
	Quantity (CY)	0	1,340

Material Import Summary				
Facility	NYSDEC Approved Quantity (CY)	Imported	Today	Total
Stavola Construction Materials, Inc Bridgewater, NJ 2.5-inch Stone	1,000	No. Loads	0	15
		Quantity (CY)	0	300
87 19 th Avenue Astoria, NY 2.5-inch Stone	2,000	No. Loads	0	31
		Quantity (CY)	0	650
Impact Environmental Jersey City, NJ 0.5-inch Crushed Stone	5,000	No. Loads	0	189
		Quantity (CY)	0	3,780
Impact Environmental Lyndhurst, NJ 0.5-inch Crushed Stone	6,000	No. Loads	0	48
		Quantity (CY)	0	960
Impact Environmental Lyndhurst, NJ 0.75-inch Crushed Stone	4,000	No. Loads	0	29
		Quantity (CY)	0	580
Tilcon New York Inc. Wharton, NJ ASTM #5	3,500	No. Loads	0	84
		Quantity (CY)	0	1,680

Sampling

- No samples were collected.

Community Air Monitoring

- Community air monitoring was not implemented. No dust or odors were apparent on-site.

Anticipated Activities

- Kingdom will continue installing formwork and utilities in the northern part of Society Brooklyn.
- Kingdom will excavate to install utilities in the northern part of Society Brooklyn.

Cc:	J. Hayes, M. Burke, P. Farnham, E. Adkins, A. Nesci	By:	Ahmed Mahmoud
			Langan, D.P.C.

Site Photographs

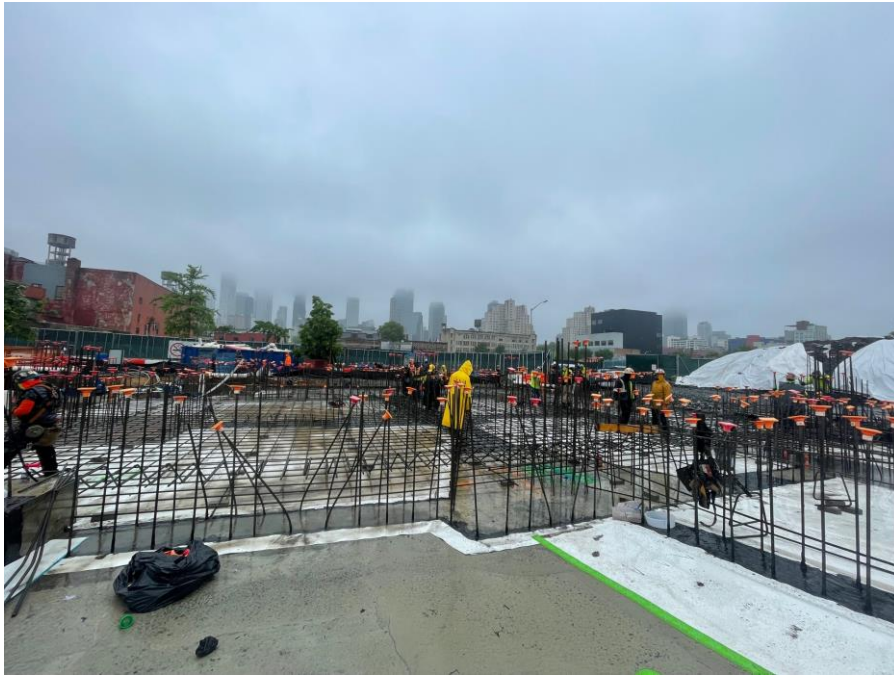


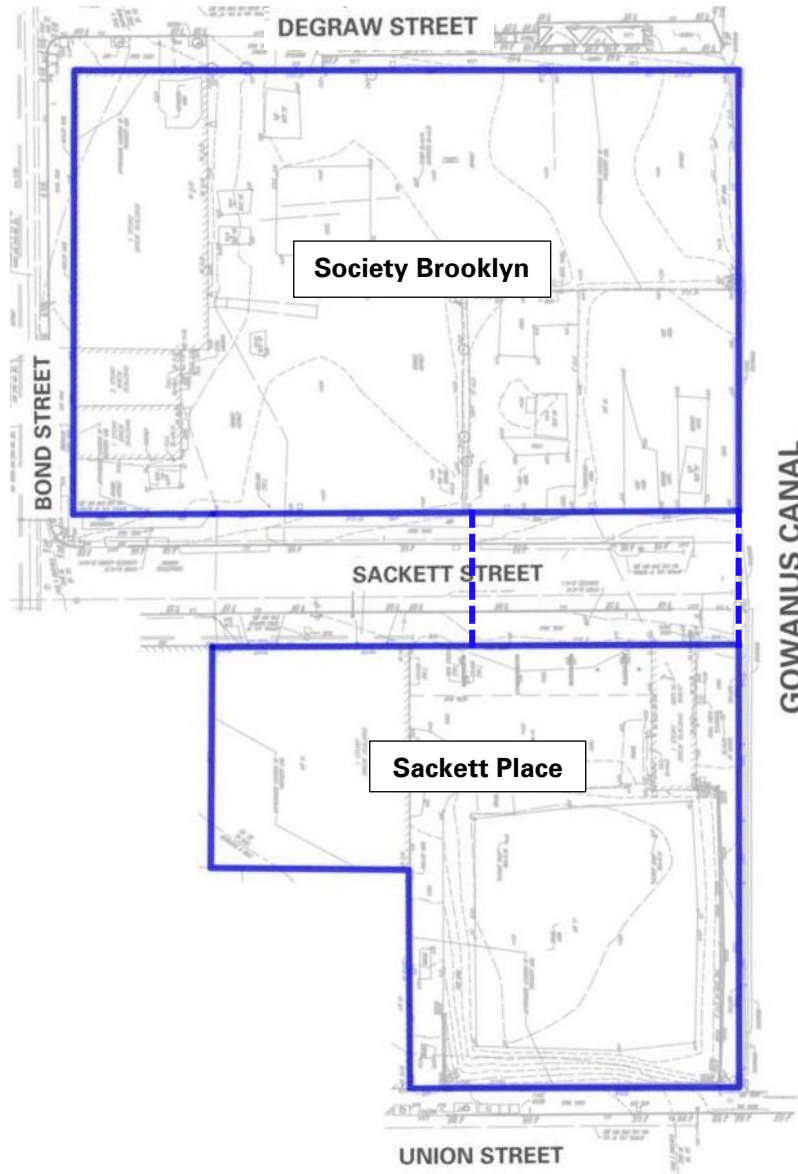
Photo 1: Kingdom installing the waterproofing/vapor barrier membrane in the northern part of Society Brooklyn (facing east)



Photo 2: Stockpile covered in polyethelene sheeting in the northeastern part of Society Brooklyn (facing northeast)

Cc:	J. Hayes, M. Burke, P. Farnham, E. Adkins, A. Nesci	By:	Ahmed Mahmoud Langan, D.P.C.
-----	---	-----	--

Site Map 1:



Legend

- Approximate BCP site boundary
- - - Approximate construction fence boundary

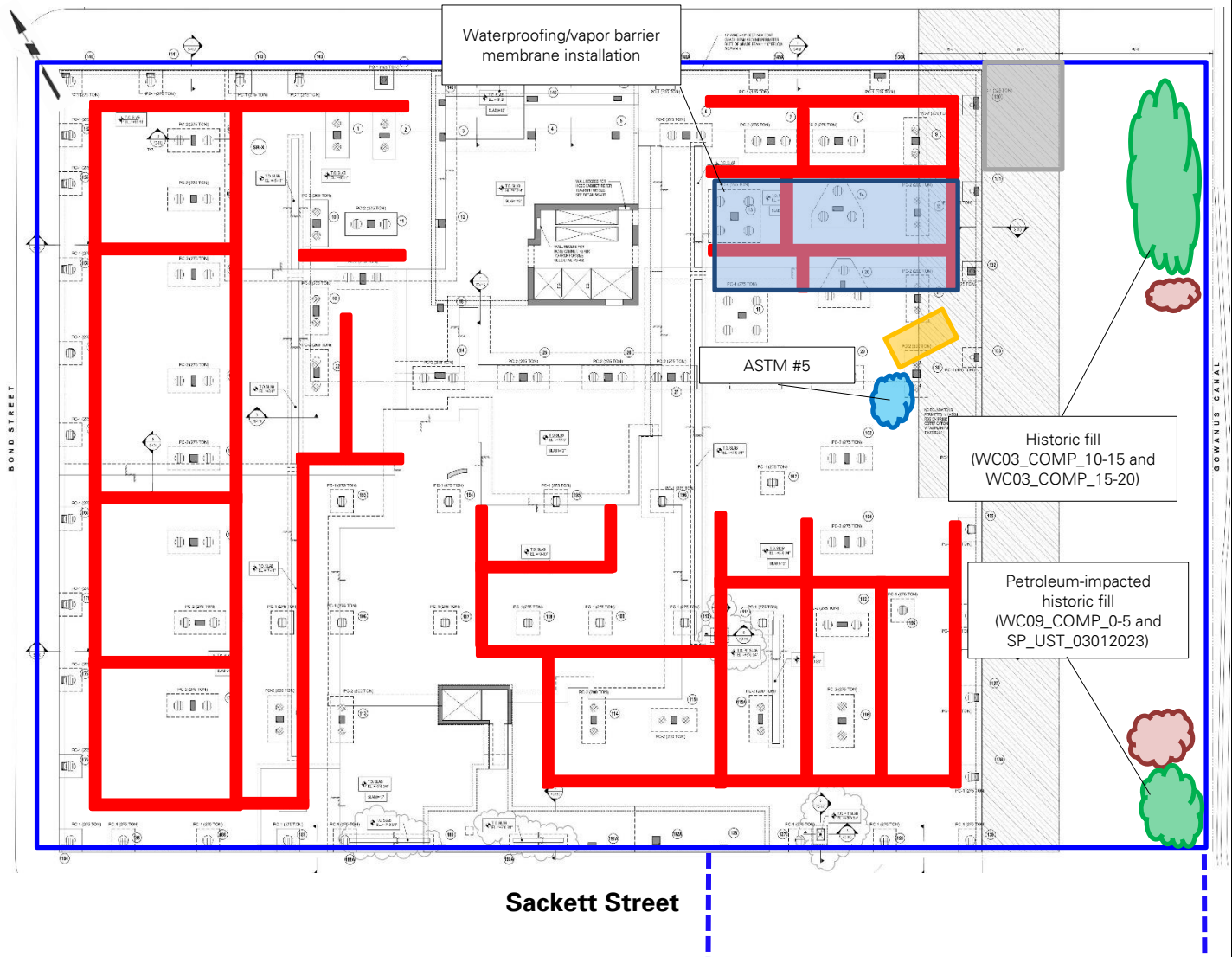
Notes

1. Base map adapted from 24 March 2022 RAWP, Figure 2 – Site Plan.
2. This Site Map is provided for context only; refer to the Northern (Society Brooklyn) and Southern (Sackett Place) Work Area Maps on the following pages for work and air monitoring location(s).

Cc:	J. Hayes, M. Burke, P. Farnham, E. Adkins, A. Nesci	By:	Ahmed Mahmoud Langan, D.P.C.
-----	---	-----	---------------------------------

Site Map 2: Northern Work Area Map (Society Brooklyn)

Base map adapted from 1 April 2022 drawing FO-201.00, "Ground Floor Framing Plan" for Society Brooklyn, prepared by DeSimone Consulting Engineers.



Legend:

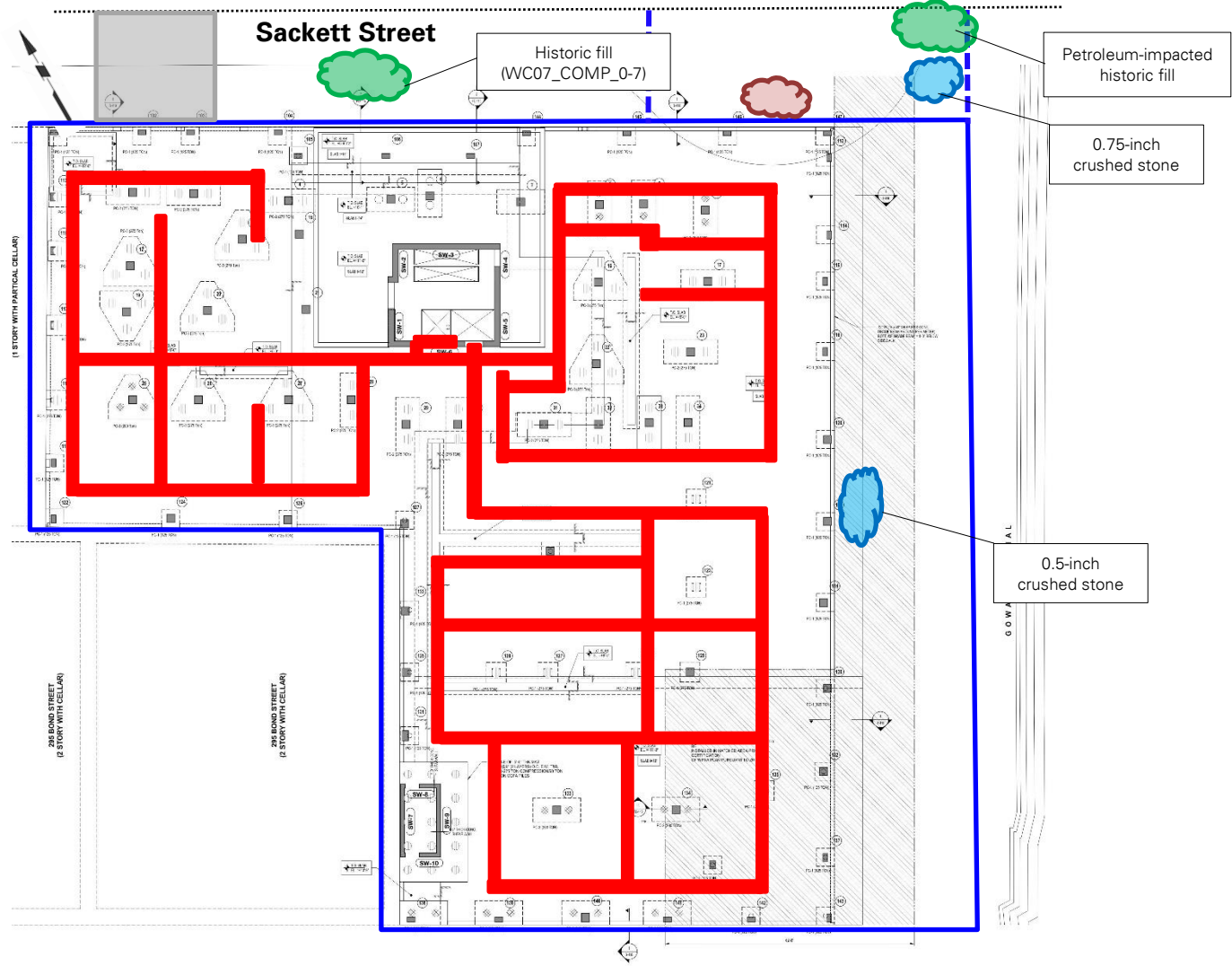
- | | | | |
|--|--|--|---|
| | Approximate site boundary | | Approximate soil/fill stockpile location |
| | Approximate construction fence boundary | | Approximate import stockpile location |
| | Upwind air monitoring station | | Approximate C&D debris stockpile location |
| | Downwind air monitoring station | | Approximate location of 20 cubic yard scrap metal container |
| | Approximate work area | | Approximate location of SMD piping installation |
| | Approximate stabilized construction entrance | | |

Cc: J. Hayes, M. Burke, P. Farnham, E. Adkins, A. Nesci

By: Ahmed Mahmoud
Langan, D.P.C.

Site Map 3: Southern Work Area Map (Sackett Place)

Base map adapted from 1 April 2022 drawing FO-201.00, "Ground Floor Framing Plan" for Sackett Place, prepared by DeSimone Consulting Engineers.



Legend:

- Approximate site boundary
- - - Approximate construction fence boundary
- X Upwind air monitoring station
- X Downwind air monitoring station
- Approximate work area
- Approximate stabilized construction entrance
- Approximate soil/fill stockpile location
- Approximate import stockpile location
- Approximate C&D debris stockpile location
- Approximate location of SMD piping installation

Cc: J. Hayes, M. Burke, P. Farnham, E. Adkins, A. Nesci

By: Ahmed Mahmoud
Langan, D.P.C.