

LANGAN SITE OBSERVATION REPORT – Day 209

<p>CLIENT: Gowanus Canal LLC, GowCan Owner, LLC, and Bayside Gowanus Owner, L.L.C.</p> <p>PROJECT No.: 170295301</p> <p>PROJECT: Gowanus Canal Northside</p> <p>LOCATION: Brooklyn, New York</p>	<p>DATE: Friday, May 26, 2023</p> <p>WEATHER: Clear, 59 – 73 °F Wind: N @ 1 – 4 mph</p> <p>TIME: 06:45 – 16:15</p> <p>BCP SITE ID: C224080</p>
<p>EQUIPMENT: Komatsu PC 490 Excavator Komatsu PC 240 Excavator Komatsu PC 78 US Excavator Komatsu Wheel Loader Komatsu PC 490 Excavator</p>	<p>PRESENT AT SITE: Langan: Andrew Ashley (Environmental), Ashlene Bisram (Geotechnical) Urban Atelier Group (UAG): Seth Anderson Kingdom Associates, Inc. (Kingdom): George Minchala TT Mechanical Corp. (TT Mechanical): Damien Sokol New York State Department of Environmental Conservation (NYSDEC): Chuck Porocca G&M Works Landscape Construction (G&M): Gino Latona</p>
<p>OBSERVATIONS, DISCUSSIONS, TEST RESULTS, ETC.:</p> <p>Langan was on-site to document implementation of the New York State Department of Environmental Conservation (NYSDEC)-approved March 24, 2022 Remedial Action Work Plan (RAWP) for Brownfield Cleanup Program (BCP) Site No. C224080. Site Map 1 presents the Society Brooklyn and Sackett Place developments, which together comprise the BCP site.</p> <p>Site Activities</p> <ul style="list-style-type: none"> Kingdom imported 9 truckloads of 0.5-inch crushed stone. The crushed stone will be used for general backfill throughout the site. See material tracking section for details. Kingdom imported 5 truckloads of ASTM #5 virgin quarry stone. The stone will be used for the sub-membrane depressurization (SMD) system installation. See material tracking section for details. Kingdom backfilled around the previously installed cellar wall with imported 0.5-inch crushed stone in the northern part of Society Brooklyn. Kingdom relocated previously stockpiled historic fill/soil in the northeastern part of Society Brooklyn. The material was stockpiled on top of and covered with polyethylene sheeting pending future off-site disposal. Kingdom installed waterproofing/vapor barrier membrane (Bituthene 4000 from GCP Applied Technologies) along the cellar foundation walls in the northern part of Society Brooklyn. Kingdom performed utility installation-related work within an about 20-foot-long by 10-foot-wide area within the Sackett Street right-of-way outside the BCP boundary as part of development-related construction. This work is not part of RAWP implementation. 	
<p>Cc: J. Hayes, M. Burke, P. Farnham, E. Adkins, A. Nesci</p>	<p>By: Andrew Ashley Langan, D.P.C.</p>

Import and Export Tracking

- Kingdom imported 9 truckloads of 0.5-inch crushed stone from the Impact Environmental facility in Jersey City, NJ.
- Kingdom imported 5 truckloads of ASTM #5 virgin quarry stone from Tilcon New York Inc.'s Mt. Hope quarry in Wharton, NJ.
- No material was exported from the site.

Soil/Fill Export Summary			
Facility	Exported	Today	Total
Bayshore Soil Management Keasbey, NJ Non-Hazardous Soil/Fill	No. Loads	0	739
	Quantity (CY)	0	14,780
Bayshore Soil Management Keasbey, NJ Non-Hazardous MGP-Impacted Soil/Fill	No. Loads	0	79
	Quantity (CY)	0	1,580
Phase III Environmental Palmerton, PA Non-Hazardous Soil/Fill	No. Loads	0	67
	Quantity (CY)	0	1,340

Material Import Summary				
Facility	NYSDEC Approved Quantity (CY)	Imported	Today	Total
Stavola Construction Materials, Inc Bridgewater, NJ 2.5-inch Stone	1,000	No. Loads	0	15
		Quantity (CY)	0	300
87 19th Avenue Astoria, NY 2.5-inch Stone	2,000	No. Loads	0	31
		Quantity (CY)	0	650
Impact Environmental Jersey City, NJ 0.5-inch Crushed Stone	5,000	No. Loads	9	208
		Quantity (CY)	180	4,160
Impact Environmental Lyndhurst, NJ 0.5-inch Crushed Stone	6,000	No. Loads	0	48
		Quantity (CY)	0	960
Impact Environmental Lyndhurst, NJ 0.75-inch Crushed Stone	4,000	No. Loads	0	29
		Quantity (CY)	0	580
Tilcon New York Inc. Wharton, NJ ASTM #5	3,500	No. Loads	5	94
		Quantity (CY)	100	1,880

Sampling

- No samples were collected.

Community Air Monitoring

- Langan conducted real-time air monitoring for volatile organic compounds (VOC) and particulate matter smaller than 10 microns in diameter (PM10) at the upwind and downwind perimeters of the work area during ground-intrusive work. VOC and PM10 concentrations did not exceed the action levels established by the community air monitoring plan (CAMP).

Cc:	J. Hayes, M. Burke, P. Farnham, E. Adkins, A. Nesci	By:	Andrew Ashley
			Langan, D.P.C.

Anticipated Activities

- Kingdom will export non-hazardous fill from the site
- Kingdom will continue installing components of the SMD systems.

Cc:	J. Hayes, M. Burke, P. Farnham, E. Adkins, A. Nesci	By:	Andrew Ashley Langan, D.P.C.
-----	---	-----	--

Site Photographs



Photo 1: Kingdom importing 0.5-inch crushed stone in the central part of Society Brooklyn (facing northeast)

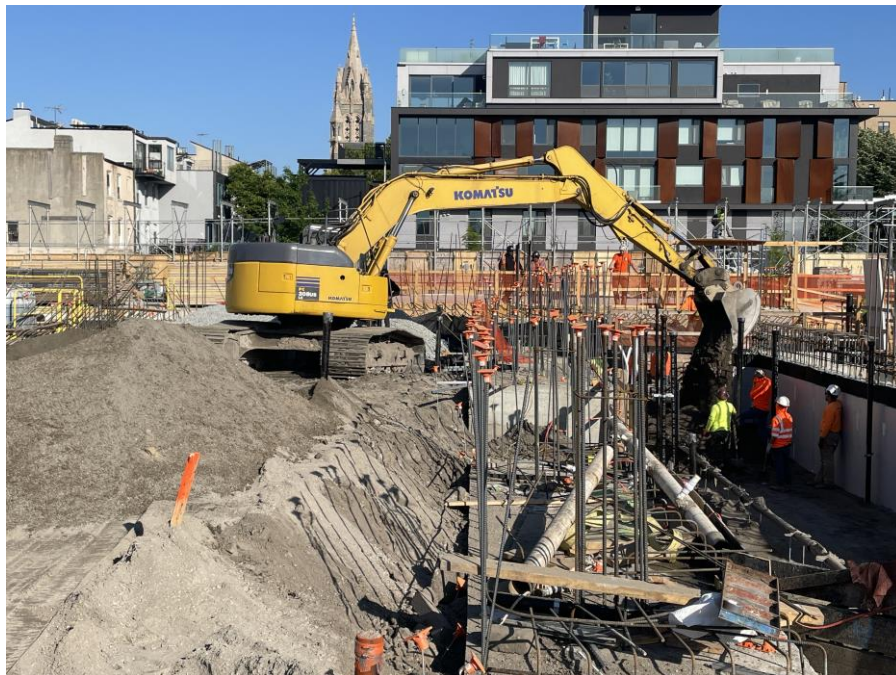
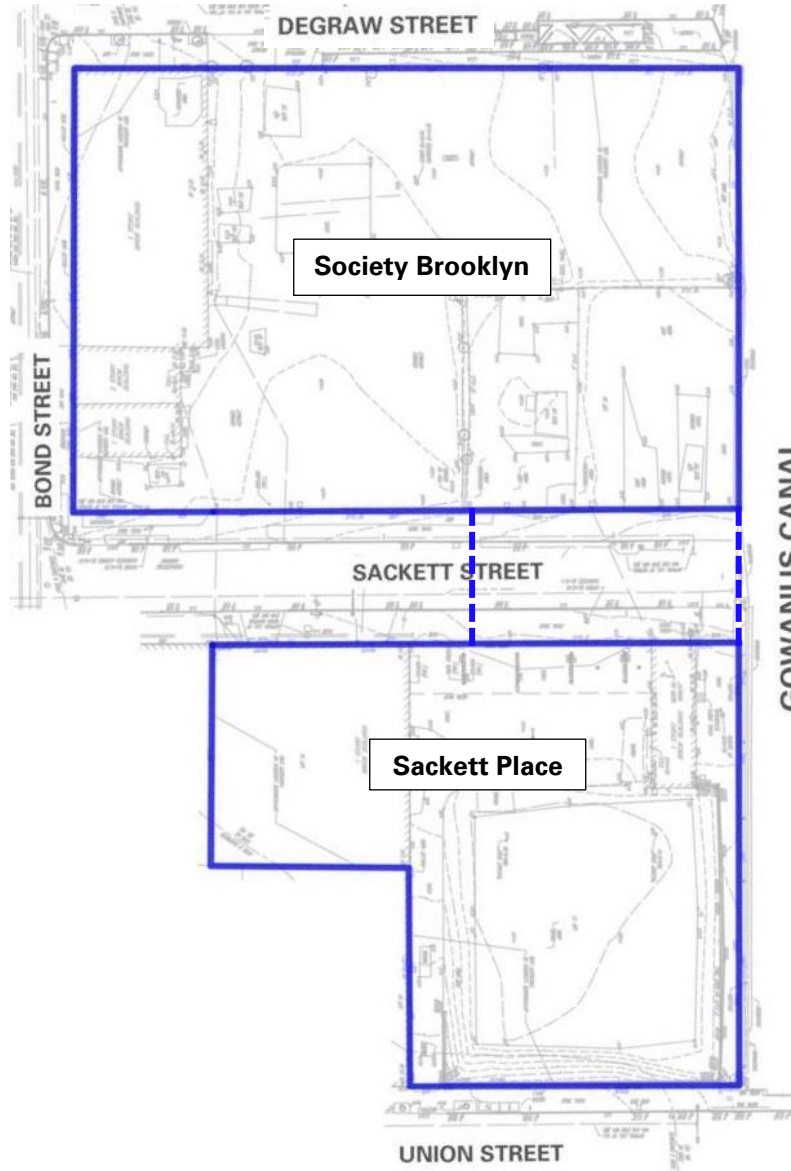




Photo 2: Kingdom backfilling around the cellar wall in the northern part of Society Brooklyn (facing west)

Cc:	J. Hayes, M. Burke, P. Farnham, E. Adkins, A. Nesci	By:	Andrew Ashley Langan, D.P.C.
-----	---	-----	--

Site Map 1:



Legend

-  Approximate BCP site boundary
-  Approximate construction fence boundary

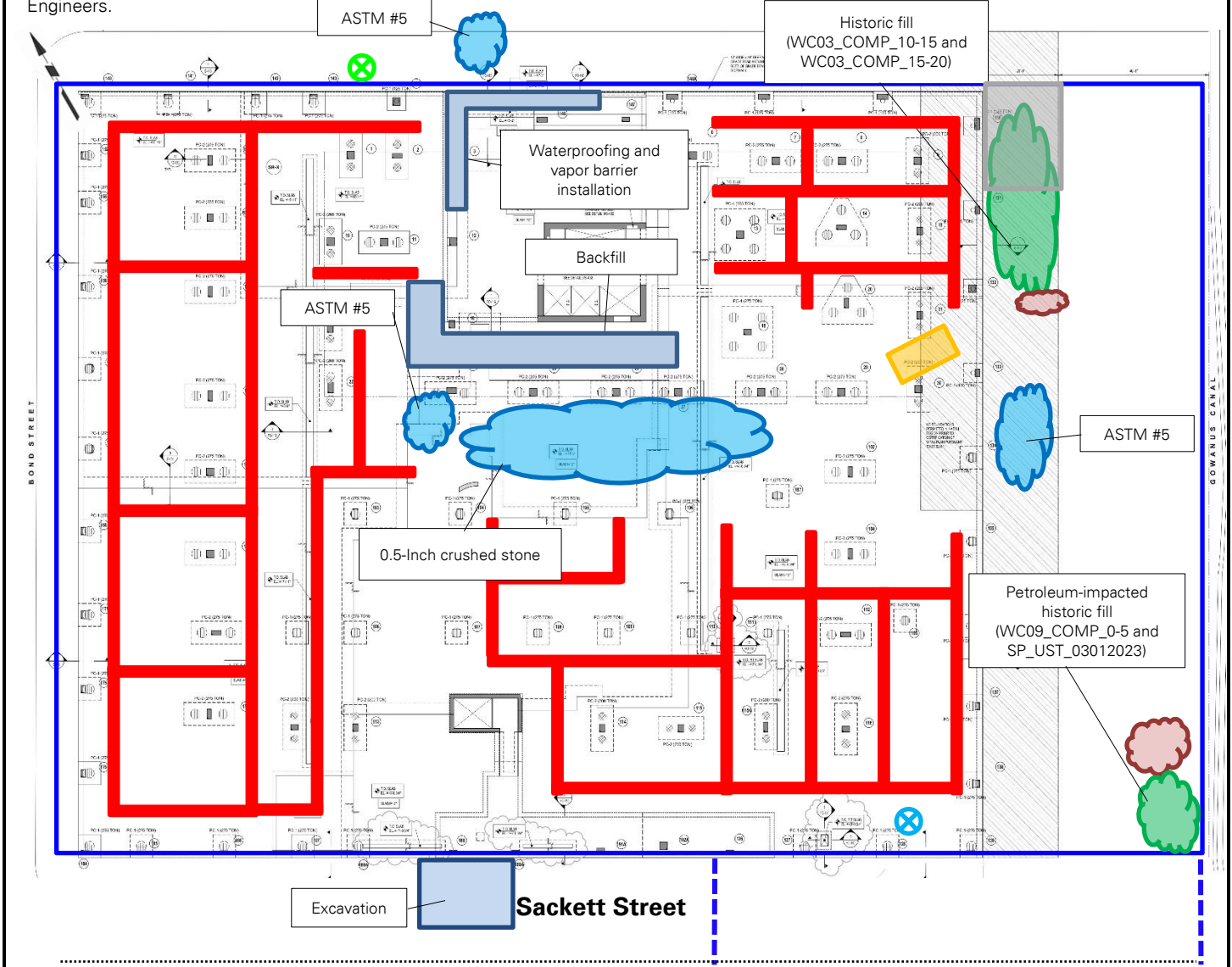
Notes

1. Base map adapted from 24 March 2022 RAWP, Figure 2 – Site Plan.
2. This Site Map is provided for context only; refer to the Northern (Society Brooklyn) and Southern (Sackett Place) Work Area Maps on the following pages for work and air monitoring location(s).

Cc:	J. Hayes, M. Burke, P. Farnham, E. Adkins, A. Nesci	By:	Andrew Ashley Langan, D.P.C.
-----	---	-----	--

Site Map 2: Northern Work Area Map (Society Brooklyn)

Base map adapted from 1 April 2022 drawing FO-201.00, "Ground Floor Framing Plan" for Society Brooklyn, prepared by DeSimone Consulting Engineers.



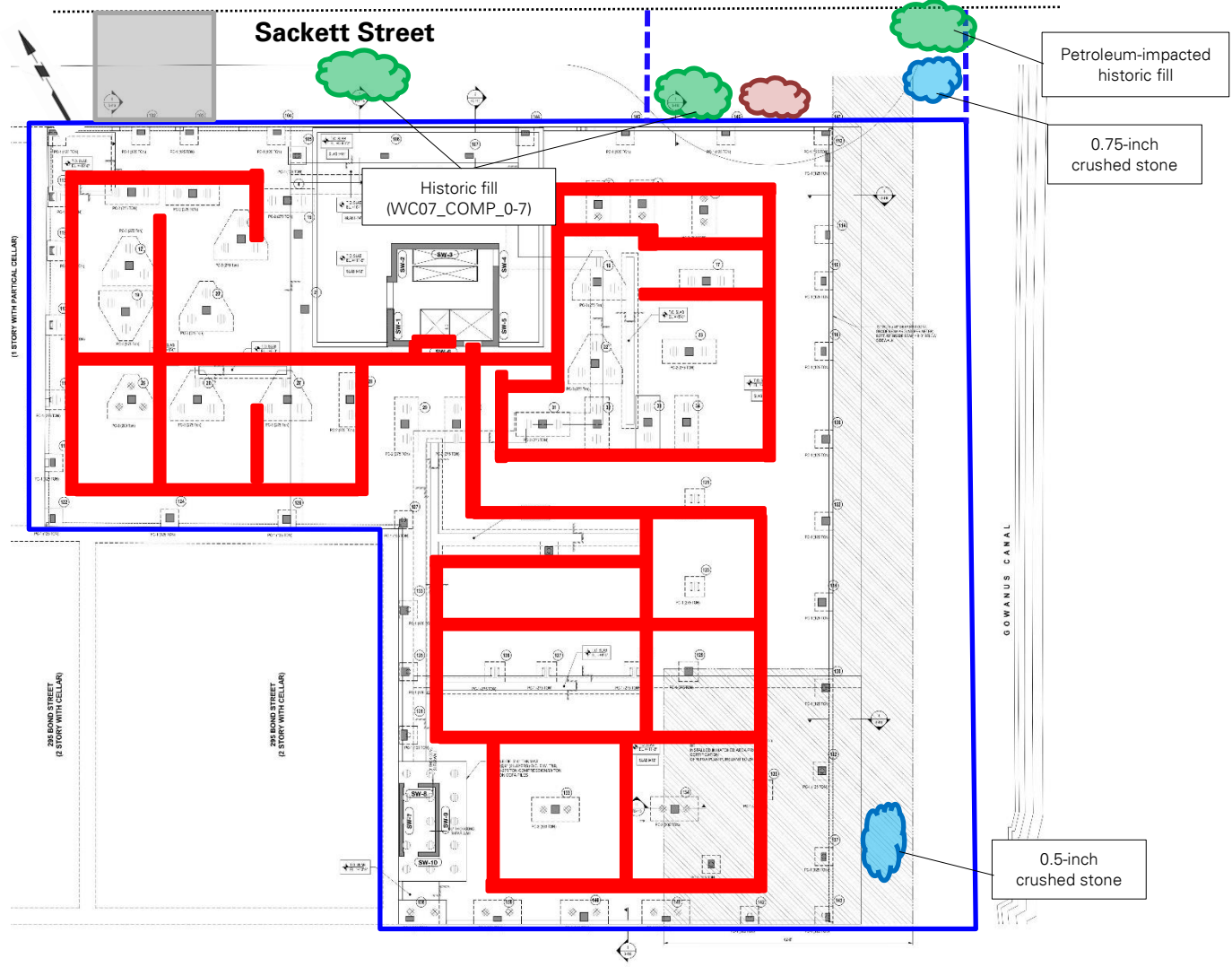
Legend:

- Approximate site boundary
- - - Approximate construction fence boundary
- ⊗ Upwind air monitoring station
- ⊗ Downwind air monitoring station
- Approximate work area
- Approximate stabilized construction entrance
- Approximate soil/fill stockpile location
- Approximate import stockpile location
- Approximate C&D debris stockpile location
- Approximate location of 20 cubic yard scrap metal container
- Approximate location of SMD piping installation

Cc:	J. Hayes, M. Burke, P. Farnham, E. Adkins, A. Nesci	By:	Andrew Ashley Langan, D.P.C.
-----	---	-----	--

Site Map 3: Southern Work Area Map (Sackett Place)

Base map adapted from 1 April 2022 drawing FO-201.00, "Ground Floor Framing Plan" for Sackett Place, prepared by DeSimone Consulting Engineers.




Legend:

- Approximate site boundary
- - - Approximate construction fence boundary
- ⊗ Upwind air monitoring station
- ⊗ Downwind air monitoring station
- Approximate work area
- Approximate stabilized construction entrance
- ☁ Approximate soil/fill stockpile location
- ☁ Approximate import stockpile location
- ☁ Approximate C&D debris stockpile location
- Approximate location of SMD piping installation

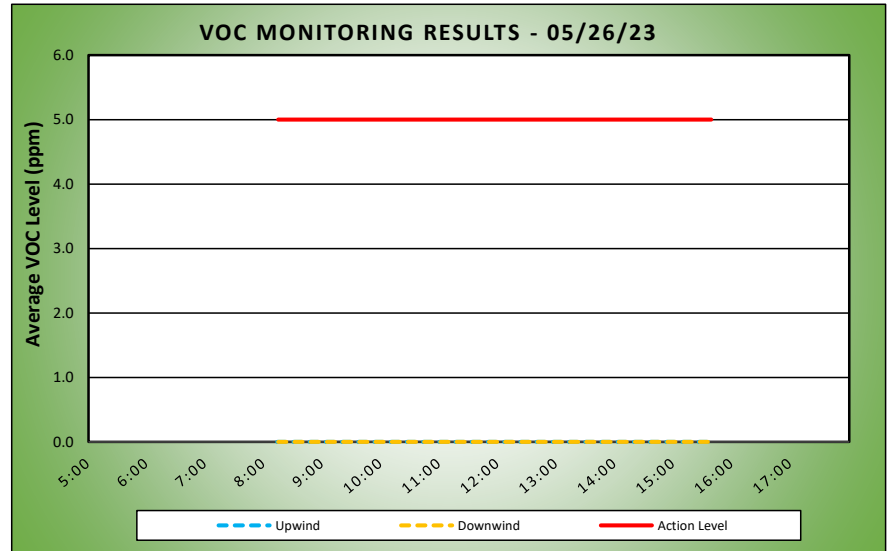
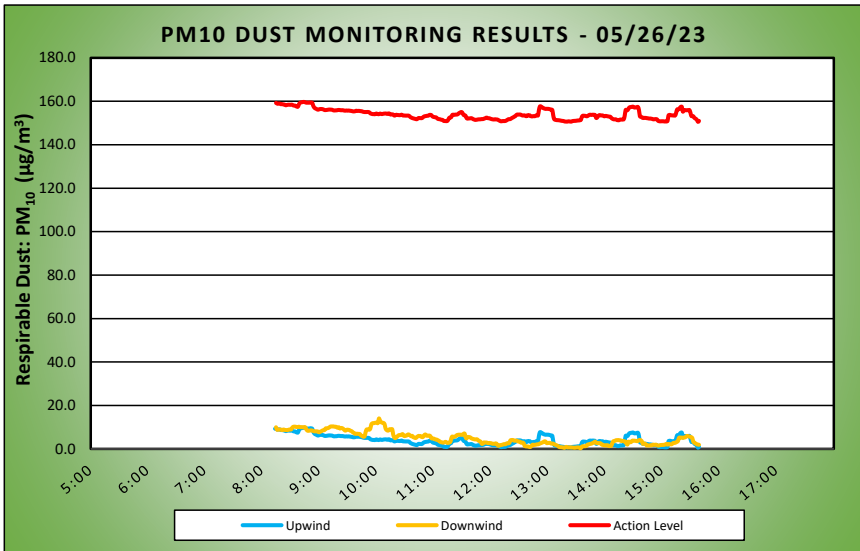
Cc: J. Hayes, M. Burke, P. Farnham, E. Adkins, A. Nesci

By: Andrew Ashley
Langan, D.P.C.

	DAILY AIR MONITORING REPORT Gowanus Canal Northside 267 Bond Street, Brooklyn, New York				05/26/23			
					Project number: 170295301			
					Page 1 of 2			Rev. No. 0
					Submitted By: Andrew Ashley			
					Dust Action Level		150 µg/m ³	
TVOC Action Level		5 ppm						

Weather Data Range for Work Day		Wind Direction	N	Relative Humidity (%)	23.0 - 50.0	Daily Rain (in)	0.00	Readings in the summary table and graphs below are the reported downwind concentrations.
Temp (°F)	59.0 - 73.0	Wind Speed (MPH)	1.2 - 4.0	Barometer (inHg)	30.30 - 30.30			

Station Location Area	Work	Daily Avg. Dust Concentration (µg/m ³)	Max 15 Min Dust Concentration (µg/m ³)	Time of Maximum 15 Minute Avg Dust Reading	Daily Avg. VOC Concentration (ppm)	Max 15 Min VOC Concentration (ppm)	Time of Max VOC Reading
Upwind		4.0	9.7	8:44	0.0	0.0	8:14
Downwind		5.0	14.0	10:03	0.0	0.0	8:15

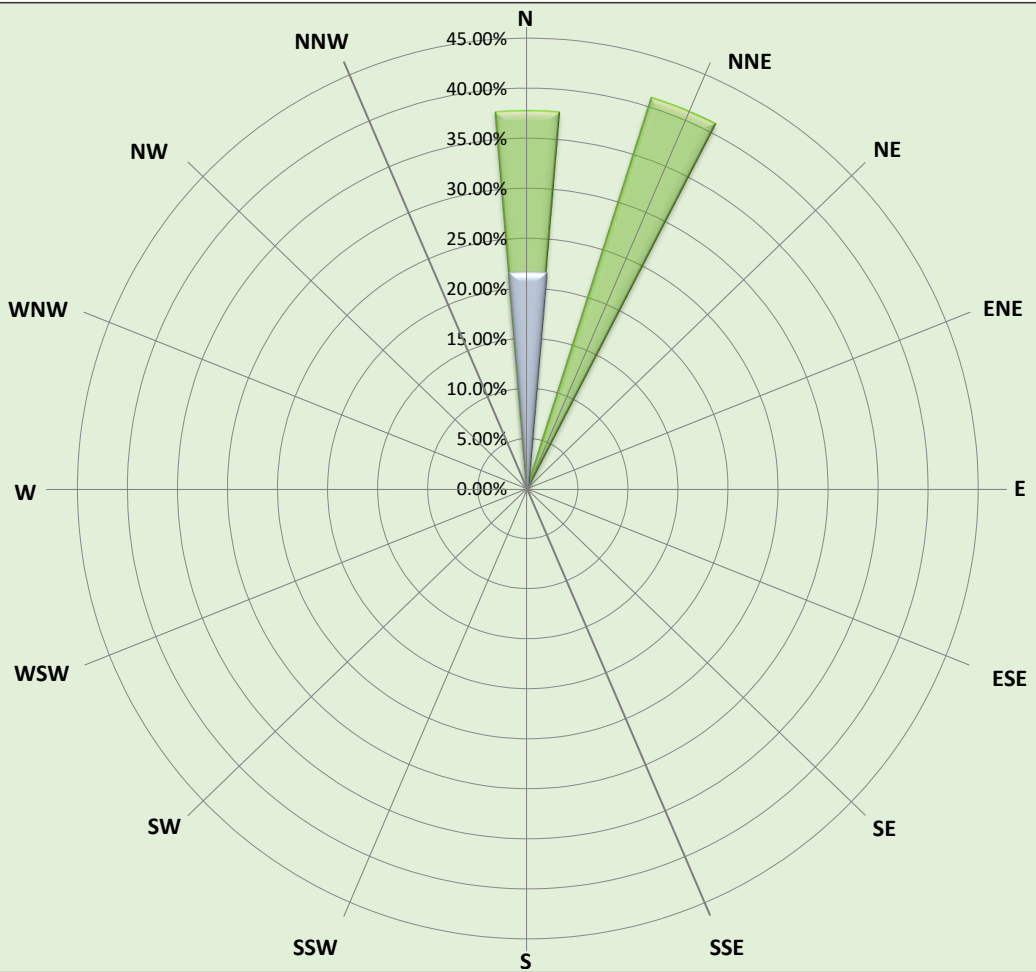


Air Monitoring Notes:

Sampling Notes:

Weather Notes:

Langan - Gowanus Canal Northside
Air Monitoring 05/26/23
Wind Speed & Direction
Daily Readings



- > 10 MPH
- 8 - 10 MPH
- 6 - 8 MPH
- 4 - 6 MPH
- 2 - 4 MPH
- 1 - 2 MPH
- Calm

Friday, May 26, 2023						
Number of Instances Where Downwind Particulates Exceeds Upwind Particulate + 150 =						0
Number of Comparable Data Points =						445
Start Time:						7:59
End Time:						15:39
PARTICULATE DATA						
Upwind			Downwind			Exceeds Particulate Alarm Limit
Time	Concentration (ug/m ³)	15-Min Avg Concentration (ug/m ³)	Time	Concentration (ug/m ³)	15-Min Avg Concentration (ug/m ³)	
7:59	9.0	-	7:59	-	-	-
8:00	9.0	-	8:00	22.0	-	-
8:01	11.0	-	8:01	27.0	-	-
8:02	9.8	-	8:02	9.0	-	-
8:03	8.3	-	8:03	8.0	-	-
8:04	8.3	-	8:04	8.3	-	-
8:05	11.8	-	8:05	7.5	-	-
8:06	11.3	-	8:06	11.8	-	-
8:07	10.3	-	8:07	7.8	-	-
8:08	10.0	-	8:08	6.3	-	-
8:09	8.5	-	8:09	10.8	-	-
8:10	12.8	-	8:10	11.0	-	-
8:11	7.3	-	8:11	9.8	-	-
8:12	6.0	-	8:12	7.3	-	-
8:13	7.3	-	8:13	7.3	-	-
8:14	8.0	9.3	8:14	8.0	-	-
8:15	8.8	9.3	8:15	9.8	10.0	-
8:16	7.0	9.0	8:16	9.8	8.8	-
8:17	7.8	8.9	8:17	9.8	8.9	-
8:18	10.0	9.0	8:18	8.5	8.9	-
8:19	7.3	8.9	8:19	8.0	8.9	-
8:20	8.0	8.7	8:20	8.0	8.9	-
8:21	11.8	8.7	8:21	8.5	8.7	-
8:22	9.5	8.7	8:22	9.0	8.8	-
8:23	8.0	8.5	8:23	8.5	8.9	-
8:24	8.0	8.5	8:24	8.0	8.7	-
8:25	8.5	8.2	8:25	10.3	8.7	-
8:26	8.0	8.3	8:26	9.0	8.6	-
8:27	8.0	8.4	8:27	7.8	8.7	-
8:28	8.0	8.4	8:28	9.0	8.8	-
8:29	8.0	8.4	8:29	9.8	8.9	-
8:30	8.0	8.4	8:30	10.0	8.9	-
8:31	8.0	8.5	8:31	11.5	9.0	-
8:32	7.0	8.4	8:32	20.0	9.7	-
8:33	6.0	8.1	8:33	14.8	10.1	-
8:34	6.0	8.1	8:34	9.3	10.2	-
8:35	7.5	8.0	8:35	8.0	10.2	-
8:36	7.3	7.7	8:36	7.3	10.1	-
8:37	7.0	7.6	8:37	8.0	10.1	-
8:38	7.3	7.5	8:38	8.5	10.1	-
8:39	24.0	8.6	8:39	9.8	10.2	-
8:40	18.0	9.2	8:40	8.5	10.1	-
8:41	12.0	9.5	8:41	8.0	10.0	-
8:42	9.3	9.6	8:42	8.0	10.0	-
8:43	9.8	9.7	8:43	8.0	10.0	-
8:44	8.8	9.7	8:44	9.0	9.9	-
8:45	7.3	9.7	8:45	12.5	10.1	-
8:46	5.3	9.5	8:46	7.3	9.8	-
8:47	5.3	9.4	8:47	7.0	8.9	-
8:48	6.0	9.4	8:48	7.0	8.4	-
8:49	6.0	9.4	8:49	8.3	8.3	-
8:50	7.5	9.4	8:50	9.0	8.4	-
8:51	9.3	9.5	8:51	8.3	8.5	-
8:52	6.0	9.4	8:52	8.5	8.5	-
8:53	5.3	9.3	8:53	7.0	8.4	-
8:54	5.0	8.0	8:54	7.0	8.2	-
8:55	5.5	7.2	8:55	7.0	8.1	-
8:56	6.0	6.8	8:56	7.5	8.1	-
8:57	6.0	6.6	8:57	8.0	8.1	-
8:58	6.0	6.3	8:58	7.5	8.1	-
8:59	6.0	6.2	8:59	7.8	8.0	-
9:00	9.0	6.3	9:00	7.5	7.6	-
9:01	7.5	6.4	9:01	10.0	7.8	-
9:02	5.8	6.5	9:02	10.3	8.0	-
9:03	5.8	6.4	9:03	9.8	8.2	-
9:04	5.0	6.4	9:04	12.5	8.5	-
9:05	5.0	6.2	9:05	10.5	8.6	-
9:06	6.0	6.0	9:06	9.5	8.7	-
9:07	5.8	6.0	9:07	19.3	9.4	-
9:08	6.0	6.0	9:08	8.0	9.5	-
9:09	6.0	6.1	9:09	7.8	9.5	-

PARTICULATE DATA						
Upwind			Downwind			Exceeds Particulate Alarm Limit
Time	Concentration ($\mu\text{g}/\text{m}^3$)	15-Min Avg Concentration ($\mu\text{g}/\text{m}^3$)	Time	Concentration ($\mu\text{g}/\text{m}^3$)	15-Min Avg Concentration ($\mu\text{g}/\text{m}^3$)	
9:10	6.8	6.2	9:10	9.3	9.7	-
9:11	6.5	6.2	9:11	11.3	9.9	-
9:12	5.8	6.2	9:12	12.8	10.2	-
9:13	5.5	6.2	9:13	9.0	10.3	-
9:14	5.0	6.1	9:14	7.5	10.3	-
9:15	6.0	5.9	9:15	8.0	10.4	-
9:16	6.0	5.8	9:16	8.5	10.3	-
9:17	6.3	5.8	9:17	9.3	10.2	-
9:18	6.0	5.8	9:18	9.5	10.2	-
9:19	5.8	5.9	9:19	7.8	9.9	-
9:20	6.5	6.0	9:20	9.3	9.8	-
9:21	6.5	6.0	9:21	12.3	10.0	-
9:22	5.0	6.0	9:22	10.8	9.4	-
9:23	5.0	5.9	9:23	11.0	9.6	-
9:24	6.0	5.9	9:24	8.0	9.6	-
9:25	6.8	5.9	9:25	6.3	9.4	-
9:26	5.0	5.8	9:26	6.0	9.1	-
9:27	4.5	5.7	9:27	6.0	8.6	-
9:28	5.3	5.7	9:28	6.0	8.4	-
9:29	6.0	5.8	9:29	12.5	8.7	-
9:30	5.0	5.7	9:30	9.5	8.8	-
9:31	6.8	5.8	9:31	7.5	8.8	-
9:32	5.5	5.7	9:32	7.5	8.7	-
9:33	5.0	5.6	9:33	5.5	8.4	-
9:34	4.8	5.6	9:34	5.3	8.2	-
9:35	5.0	5.5	9:35	5.0	7.9	-
9:36	5.0	5.4	9:36	6.0	7.5	-
9:37	5.0	5.4	9:37	7.8	7.3	-
9:38	6.0	5.4	9:38	6.0	7.0	-
9:39	9.3	5.7	9:39	7.3	6.9	-
9:40	5.8	5.6	9:40	6.8	7.0	-
9:41	5.0	5.6	9:41	5.3	6.9	-
9:42	4.8	5.6	9:42	5.5	6.9	-
9:43	4.3	5.5	9:43	5.0	6.8	-
9:44	5.0	5.5	9:44	4.8	6.3	-
9:45	4.3	5.4	9:45	4.8	6.0	-
9:46	4.0	5.2	9:46	4.5	5.8	-
9:47	4.0	5.1	9:47	4.3	5.6	-
9:48	4.0	5.1	9:48	8.8	5.8	-
9:49	4.8	5.1	9:49	33.0	7.6	-
9:50	5.0	5.1	9:50	23.8	8.9	-
9:51	5.3	5.1	9:51	7.8	9.0	-
9:52	4.8	5.1	9:52	6.5	8.9	-
9:53	3.3	4.9	9:53	4.8	8.8	-
9:54	3.0	4.5	9:54	15.3	9.4	-
9:55	3.0	4.3	9:55	34.5	11.2	-
9:56	3.0	4.2	9:56	12.8	11.7	-
9:57	4.0	4.1	9:57	7.5	11.9	-
9:58	4.5	4.1	9:58	5.5	11.9	-
9:59	4.0	4.1	9:59	6.5	12.0	-
10:00	8.8	4.4	10:00	5.5	12.1	-
10:01	2.8	4.3	10:01	3.0	12.0	-
10:02	1.8	4.1	10:02	3.3	11.9	-
10:03	3.5	4.1	10:03	40.3	14.0	-
10:04	8.3	4.3	10:04	21.0	13.2	-
10:05	4.3	4.3	10:05	12.5	12.4	-
10:06	3.3	4.1	10:06	3.3	12.1	-
10:07	5.8	4.2	10:07	4.3	12.0	-
10:08	5.0	4.3	10:08	3.5	11.9	-
10:09	3.5	4.4	10:09	6.5	11.3	-
10:10	3.5	4.4	10:10	5.5	9.4	-
10:11	2.0	4.3	10:11	3.3	8.8	-
10:12	2.0	4.2	10:12	3.0	8.5	-
10:13	7.5	4.4	10:13	5.5	8.5	-
10:14	3.8	4.4	10:14	15.0	9.0	-
10:15	2.3	3.9	10:15	5.8	9.0	-
10:16	3.0	4.0	10:16	3.0	9.0	-
10:17	2.3	4.0	10:17	3.3	9.0	-
10:18	2.0	3.9	10:18	4.0	6.6	-
10:19	2.0	3.5	10:19	3.3	5.4	-
10:20	4.8	3.5	10:20	5.3	5.0	-
10:21	7.8	3.8	10:21	7.0	5.2	-
10:22	4.8	3.7	10:22	10.3	5.6	-
10:23	4.3	3.7	10:23	9.5	6.0	-
10:24	3.0	3.7	10:24	11.5	6.3	-
10:25	3.0	3.6	10:25	5.8	6.4	-

PARTICULATE DATA						
Upwind			Downwind			Exceeds Particulate Alarm Limit
Time	Concentration (ug/m ³)	15-Min Avg Concentration (ug/m ³)	Time	Concentration (ug/m ³)	15-Min Avg Concentration (ug/m ³)	
10:26	3.5	3.7	10:26	4.8	6.5	-
10:27	3.8	3.8	10:27	5.8	6.6	-
10:28	2.8	3.5	10:28	7.8	6.8	-
10:29	3.0	3.5	10:29	4.5	6.1	-
10:30	2.0	3.5	10:30	2.8	5.9	-
10:31	2.5	3.4	10:31	5.8	6.1	-
10:32	2.3	3.4	10:32	4.0	6.1	-
10:33	2.0	3.4	10:33	9.5	6.5	-
10:34	2.0	3.4	10:34	5.8	6.7	-
10:35	1.5	3.2	10:35	2.0	6.4	-
10:36	1.0	2.8	10:36	2.0	6.1	-
10:37	1.3	2.5	10:37	5.8	5.8	-
10:38	1.0	2.3	10:38	12.5	6.0	-
10:39	1.0	2.2	10:39	3.3	5.5	-
10:40	1.0	2.0	10:40	2.5	5.2	-
10:41	1.8	1.9	10:41	2.0	5.1	-
10:42	2.0	1.8	10:42	6.0	5.1	-
10:43	2.5	1.8	10:43	14.3	5.5	-
10:44	8.5	2.2	10:44	9.3	5.8	-
10:45	4.6	2.3	10:45	5.5	6.0	-
10:46	1.6	2.3	10:46	3.0	5.8	-
10:47	2.2	2.3	10:47	5.3	5.9	-
10:48	1.8	2.2	10:48	3.5	5.5	-
10:49	6.4	2.5	10:49	4.8	5.4	-
10:50	7.0	2.9	10:50	8.3	5.9	-
10:51	4.0	3.1	10:51	11.8	6.5	-
10:52	2.4	3.2	10:52	7.3	6.6	-
10:53	2.6	3.3	10:53	5.3	6.1	-
10:54	1.8	3.3	10:54	2.0	6.0	-
10:55	2.2	3.4	10:55	3.5	6.1	-
10:56	6.2	3.7	10:56	2.3	6.1	-
10:57	2.4	3.7	10:57	1.8	5.8	-
10:58	1.0	3.6	10:58	1.3	5.0	-
10:59	1.0	3.1	10:59	6.3	4.8	-
11:00	0.4	2.9	11:00	5.5	4.8	-
11:01	0.0	2.8	11:01	1.0	4.6	-
11:02	0.6	2.7	11:02	1.8	4.4	-
11:03	1.0	2.6	11:03	2.3	4.3	-
11:04	1.0	2.2	11:04	3.0	4.2	-
11:05	1.8	1.9	11:05	4.3	3.9	-
11:06	2.8	1.8	11:06	8.3	3.7	-
11:07	1.4	1.7	11:07	2.5	3.4	-
11:08	0.0	1.6	11:08	1.0	3.1	-
11:09	0.6	1.5	11:09	1.0	3.0	-
11:10	0.6	1.4	11:10	1.5	2.9	-
11:11	0.2	1.0	11:11	2.8	2.9	-
11:12	1.6	0.9	11:12	3.8	3.1	-
11:13	0.6	0.9	11:13	4.0	3.3	-
11:14	0.6	0.9	11:14	2.5	3.0	-
11:15	2.6	1.0	11:15	2.0	2.8	-
11:16	10.6	1.7	11:16	1.5	2.8	-
11:17	11.8	2.5	11:17	3.8	2.9	-
11:18	1.6	2.5	11:18	6.3	3.2	-
11:19	4.6	2.8	11:19	27.8	4.9	-
11:20	16.0	3.7	11:20	17.0	5.7	-
11:21	4.8	3.8	11:21	3.5	5.4	-
11:22	0.2	3.8	11:22	5.5	5.6	-
11:23	1.4	3.9	11:23	3.0	5.7	-
11:24	1.2	3.9	11:24	5.3	6.0	-
11:25	1.0	3.9	11:25	6.8	6.4	-
11:26	3.2	4.1	11:26	4.3	6.5	-
11:27	7.8	4.5	11:27	5.0	6.5	-
11:28	4.0	4.8	11:28	3.8	6.5	-
11:29	4.2	5.0	11:29	2.5	6.5	-
11:30	3.0	5.0	11:30	1.3	6.5	-
11:31	1.6	4.4	11:31	3.0	6.6	-
11:32	0.2	3.7	11:32	9.8	7.0	-
11:33	0.4	3.6	11:33	7.0	7.0	-
11:34	0.8	3.3	11:34	3.8	5.4	-
11:35	0.6	2.3	11:35	7.5	4.8	-
11:36	1.0	2.0	11:36	13.3	5.4	-
11:37	1.2	2.1	11:37	6.0	5.5	-
11:38	1.8	2.1	11:38	2.3	5.4	-
11:39	1.8	2.2	11:39	2.5	5.2	-
11:40	2.0	2.2	11:40	1.8	4.9	-
11:41	0.4	2.1	11:41	1.3	4.7	-

PARTICULATE DATA						
Upwind			Downwind			Exceeds Particulate Alarm Limit
Time	Concentration (ug/m ³)	15-Min Avg Concentration (ug/m ³)	Time	Concentration (ug/m ³)	15-Min Avg Concentration (ug/m ³)	
11:42	3.6	1.8	11:42	2.8	4.6	-
11:43	1.8	1.6	11:43	2.3	4.5	-
11:44	1.6	1.5	11:44	1.0	4.4	-
11:45	3.6	1.5	11:45	2.0	4.4	-
11:46	2.4	1.5	11:46	3.0	4.4	-
11:47	1.8	1.7	11:47	4.5	4.1	-
11:48	1.0	1.7	11:48	1.5	3.7	-
11:49	1.0	1.7	11:49	1.3	3.5	-
11:50	1.2	1.7	11:50	1.8	3.1	-
11:51	2.2	1.8	11:51	0.8	2.3	-
11:52	1.0	1.8	11:52	8.3	2.5	-
11:53	3.6	1.9	11:53	9.8	3.0	-
11:54	4.6	2.1	11:54	2.3	2.9	-
11:55	4.4	2.3	11:55	1.8	2.9	-
11:56	3.8	2.5	11:56	1.0	2.9	-
11:57	0.6	2.3	11:57	0.3	2.8	-
11:58	0.4	2.2	11:58	1.0	2.7	-
11:59	1.0	2.2	11:59	1.8	2.7	-
12:00	1.0	2.0	12:00	1.0	2.7	-
12:01	0.2	1.9	12:01	2.0	2.6	-
12:02	0.0	1.7	12:02	1.8	2.4	-
12:03	0.0	1.7	12:03	1.0	2.4	-
12:04	0.6	1.6	12:04	1.3	2.4	-
12:05	2.6	1.7	12:05	2.5	2.4	-
12:06	0.8	1.6	12:06	2.5	2.5	-
12:07	1.0	1.6	12:07	1.5	2.1	-
12:08	1.0	1.5	12:08	1.3	1.5	-
12:09	1.0	1.2	12:09	1.0	1.4	-
12:10	1.0	1.0	12:10	5.8	1.7	-
12:11	1.0	0.8	12:11	2.0	1.8	-
12:12	1.0	0.8	12:12	1.5	1.9	-
12:13	1.3	0.9	12:13	2.5	2.0	-
12:14	1.3	0.9	12:14	4.8	2.2	-
12:15	1.0	0.9	12:15	1.0	2.2	-
12:16	1.5	1.0	12:16	2.0	2.2	-
12:17	3.5	1.2	12:17	7.0	2.5	-
12:18	4.0	1.5	12:18	2.3	2.6	-
12:19	4.5	1.8	12:19	1.3	2.6	-
12:20	2.8	1.8	12:20	6.3	2.8	-
12:21	2.0	1.9	12:21	18.3	3.9	-
12:22	5.3	2.1	12:22	4.0	4.1	-
12:23	5.3	2.4	12:23	1.8	4.1	-
12:24	3.8	2.6	12:24	0.3	4.0	-
12:25	6.0	2.9	12:25	2.0	3.8	-
12:26	3.8	3.1	12:26	2.3	3.8	-
12:27	7.8	3.6	12:27	2.0	3.8	-
12:28	6.0	3.9	12:28	0.5	3.7	-
12:29	1.5	3.9	12:29	0.5	3.4	-
12:30	1.0	3.9	12:30	0.5	3.4	-
12:31	1.8	3.9	12:31	1.3	3.3	-
12:32	2.0	3.8	12:32	0.3	2.9	-
12:33	0.8	3.6	12:33	1.8	2.9	-
12:34	2.3	3.5	12:34	2.0	2.9	-
12:35	3.8	3.5	12:35	1.0	2.6	-
12:36	1.8	3.5	12:36	1.0	1.4	-
12:37	1.3	3.2	12:37	1.0	1.2	-
12:38	4.5	3.2	12:38	0.8	1.1	-
12:39	10.0	3.6	12:39	0.0	1.1	-
12:40	4.0	3.5	12:40	0.5	1.0	-
12:41	6.0	3.6	12:41	0.3	0.9	-
12:42	3.3	3.3	12:42	2.3	0.9	-
12:43	2.8	3.1	12:43	5.8	1.3	-
12:44	1.0	3.1	12:44	9.8	1.9	-
12:45	2.8	3.2	12:45	1.0	1.9	-
12:46	1.3	3.2	12:46	0.3	1.8	-
12:47	2.8	3.2	12:47	1.0	1.9	-
12:48	5.3	3.5	12:48	3.0	2.0	-
12:49	3.8	3.6	12:49	3.8	2.1	-
12:50	2.0	3.5	12:50	1.3	2.1	-
12:51	39.8	6.0	12:51	3.3	2.3	-
12:52	25.3	7.6	12:52	4.3	2.5	-
12:53	5.0	7.7	12:53	3.3	2.6	-
12:54	2.8	7.2	12:54	2.8	2.8	-
12:55	3.0	7.1	12:55	3.3	3.0	-
12:56	1.3	6.8	12:56	4.0	3.3	-
12:57	1.0	6.6	12:57	5.8	3.5	-

PARTICULATE DATA						
Upwind			Downwind			Exceeds Particulate Alarm Limit
Time	Concentration (ug/m ³)	15-Min Avg Concentration (ug/m ³)	Time	Concentration (ug/m ³)	15-Min Avg Concentration (ug/m ³)	
12:58	1.0	6.5	12:58	3.3	3.3	-
12:59	1.5	6.6	12:59	0.3	2.7	-
13:00	2.5	6.5	13:00	1.0	2.7	-
13:01	1.0	6.5	13:01	1.0	2.7	-
13:02	1.0	6.4	13:02	1.8	2.8	-
13:03	3.5	6.3	13:03	1.0	2.7	-
13:04	1.5	6.1	13:04	0.5	2.4	-
13:05	1.0	6.1	13:05	1.3	2.4	-
13:06	1.0	3.5	13:06	3.0	2.4	-
13:07	0.0	1.8	13:07	0.0	2.1	-
13:08	0.8	1.5	13:08	0.0	1.9	-
13:09	1.0	1.4	13:09	0.0	1.7	-
13:10	2.0	1.3	13:10	0.3	1.5	-
13:11	1.0	1.3	13:11	0.5	1.3	-
13:12	0.3	1.3	13:12	0.8	1.0	-
13:13	0.0	1.2	13:13	0.8	0.8	-
13:14	0.0	1.1	13:14	0.3	0.8	-
13:15	1.3	1.0	13:15	0.0	0.7	-
13:16	0.3	1.0	13:16	0.0	0.7	-
13:17	0.0	0.9	13:17	0.0	0.6	-
13:18	0.8	0.7	13:18	0.5	0.5	-
13:19	1.0	0.7	13:19	5.3	0.8	-
13:20	0.5	0.7	13:20	2.0	0.9	-
13:21	1.5	0.7	13:21	0.0	0.7	-
13:22	1.5	0.8	13:22	0.0	0.7	-
13:23	0.0	0.7	13:23	0.0	0.7	-
13:24	0.3	0.7	13:24	0.0	0.7	-
13:25	1.5	0.7	13:25	0.0	0.7	-
13:26	4.3	0.9	13:26	0.0	0.6	-
13:27	1.3	0.9	13:27	0.0	0.6	-
13:28	0.8	1.0	13:28	0.0	0.5	-
13:29	0.3	1.0	13:29	0.5	0.6	-
13:30	2.0	1.1	13:30	1.0	0.6	-
13:31	1.3	1.1	13:31	0.5	0.7	-
13:32	1.0	1.2	13:32	0.0	0.7	-
13:33	1.0	1.2	13:33	0.5	0.7	-
13:34	2.8	1.3	13:34	1.0	0.4	-
13:35	2.0	1.4	13:35	1.3	0.3	-
13:36	22.0	2.8	13:36	10.0	1.0	-
13:37	10.0	3.4	13:37	3.3	1.2	-
13:38	0.0	3.4	13:38	0.0	1.2	-
13:39	0.0	3.3	13:39	0.5	1.2	-
13:40	0.3	3.3	13:40	0.5	1.3	-
13:41	2.3	3.1	13:41	3.3	1.5	-
13:42	2.8	3.2	13:42	7.3	2.0	-
13:43	5.0	3.5	13:43	1.3	2.1	-
13:44	4.3	3.8	13:44	2.8	2.2	-
13:45	2.8	3.8	13:45	3.0	2.3	-
13:46	0.0	3.7	13:46	1.5	2.4	-
13:47	2.0	3.8	13:47	2.8	2.6	-
13:48	1.3	3.8	13:48	4.3	2.8	-
13:49	1.5	3.7	13:49	4.5	3.1	-
13:50	1.3	3.7	13:50	5.3	3.3	-
13:51	2.5	2.4	13:51	2.5	2.8	-
13:52	11.8	2.5	13:52	0.5	2.7	-
13:53	9.5	3.1	13:53	0.3	2.7	-
13:54	6.3	3.6	13:54	0.0	2.6	-
13:55	1.5	3.6	13:55	0.5	2.6	-
13:56	0.0	3.5	13:56	0.0	2.4	-
13:57	3.0	3.5	13:57	0.0	1.9	-
13:58	4.5	3.5	13:58	0.8	1.9	-
13:59	0.3	3.2	13:59	0.3	1.7	-
14:00	1.5	3.1	14:00	1.0	1.6	-
14:01	2.5	3.3	14:01	2.5	1.7	-
14:02	0.8	3.2	14:02	1.5	1.6	-
14:03	0.0	3.1	14:03	6.0	1.7	-
14:04	0.0	3.0	14:04	0.3	1.4	-
14:05	0.0	2.9	14:05	3.5	1.3	-
14:06	1.5	2.9	14:06	3.8	1.4	-
14:07	3.8	2.3	14:07	2.0	1.5	-
14:08	4.8	2.0	14:08	18.5	2.7	-
14:09	2.8	1.8	14:09	11.5	3.5	-
14:10	0.0	1.7	14:10	2.5	3.6	-
14:11	0.5	1.7	14:11	2.5	3.8	-
14:12	1.8	1.6	14:12	3.3	4.0	-
14:13	0.3	1.4	14:13	1.0	4.0	-

PARTICULATE DATA						
Upwind			Downwind			Exceeds Particulate Alarm Limit
Time	Concentration (ug/m ³)	15-Min Avg Concentration (ug/m ³)	Time	Concentration (ug/m ³)	15-Min Avg Concentration (ug/m ³)	
14:14	0.0	1.3	14:14	1.0	4.1	-
14:15	0.8	1.3	14:15	0.5	4.0	-
14:16	6.5	1.6	14:16	0.3	3.9	-
14:17	1.5	1.6	14:17	1.8	3.9	-
14:18	0.0	1.6	14:18	1.3	3.6	-
14:19	0.5	1.6	14:19	2.5	3.7	-
14:20	0.8	1.7	14:20	0.3	3.5	-
14:21	26.5	3.4	14:21	1.8	3.4	-
14:22	43.8	6.0	14:22	0.8	3.3	-
14:23	3.3	5.9	14:23	4.3	2.3	-
14:24	3.0	5.9	14:24	7.0	2.0	-
14:25	10.8	6.7	14:25	21.3	3.3	-
14:26	8.5	7.2	14:26	1.8	3.2	-
14:27	4.0	7.3	14:27	0.5	3.1	-
14:28	1.3	7.4	14:28	4.5	3.3	-
14:29	1.5	7.5	14:29	8.5	3.8	-
14:30	0.8	7.5	14:30	0.3	3.8	-
14:31	1.5	7.2	14:31	0.5	3.8	-
14:32	1.5	7.2	14:32	0.5	3.7	-
14:33	0.8	7.2	14:33	0.8	3.7	-
14:34	2.0	7.3	14:34	1.0	3.6	-
14:35	2.0	7.4	14:35	1.8	3.7	-
14:36	4.0	5.9	14:36	6.5	4.0	-
14:37	1.0	3.1	14:37	2.5	4.1	-
14:38	0.3	2.9	14:38	1.0	3.9	-
14:39	0.5	2.7	14:39	1.0	3.5	-
14:40	5.0	2.3	14:40	4.0	2.3	-
14:41	10.0	2.4	14:41	3.0	2.4	-
14:42	3.3	2.4	14:42	1.0	2.5	-
14:43	1.5	2.4	14:43	0.5	2.2	-
14:44	0.0	2.3	14:44	0.0	1.6	-
14:45	0.0	2.2	14:45	0.0	1.6	-
14:46	0.0	2.1	14:46	0.0	1.6	-
14:47	0.5	2.1	14:47	0.3	1.6	-
14:48	1.0	2.1	14:48	2.5	1.7	-
14:49	0.5	2.0	14:49	1.0	1.7	-
14:50	0.8	1.9	14:50	3.8	1.8	-
14:51	1.5	1.7	14:51	8.5	1.9	-
14:52	1.3	1.7	14:52	1.8	1.9	-
14:53	1.0	1.8	14:53	1.0	1.9	-
14:54	0.8	1.8	14:54	1.5	1.9	-
14:55	2.8	1.7	14:55	0.5	1.7	-
14:56	1.0	1.1	14:56	0.5	1.5	-
14:57	0.5	0.9	14:57	1.8	1.6	-
14:58	0.3	0.8	14:58	2.5	1.7	-
14:59	0.3	0.8	14:59	1.3	1.8	-
15:00	0.3	0.8	15:00	0.3	1.8	-
15:01	0.0	0.8	15:01	0.5	1.8	-
15:02	0.0	0.8	15:02	0.8	1.9	-
15:03	0.0	0.7	15:03	3.5	1.9	-
15:04	0.8	0.7	15:04	4.3	2.2	-
15:05	0.8	0.7	15:05	5.5	2.3	-
15:06	4.5	0.9	15:06	3.8	2.0	-
15:07	40.3	3.5	15:07	5.5	2.2	-
15:08	4.0	3.7	15:08	1.0	2.2	-
15:09	0.0	3.7	15:09	0.2	2.1	-
15:10	1.0	3.6	15:10	0.2	2.1	-
15:11	0.3	3.5	15:11	4.2	2.3	-
15:12	0.0	3.5	15:12	7.6	2.7	-
15:13	0.0	3.5	15:13	3.0	2.8	-
15:14	0.0	3.5	15:14	2.0	2.8	-
15:15	18.5	4.7	15:15	3.8	3.1	-
15:16	24.0	6.3	15:16	3.8	3.3	-
15:17	0.5	6.3	15:17	6.6	3.7	-
15:18	1.5	6.4	15:18	25.2	5.1	-
15:19	10.0	7.0	15:19	5.8	5.2	-
15:20	7.5	7.5	15:20	5.0	5.2	-
15:21	4.3	7.5	15:21	3.8	5.2	-
15:22	7.8	5.3	15:22	4.2	5.1	-
15:23	12.0	5.8	15:23	2.4	5.2	-
15:24	2.3	6.0	15:24	1.6	5.3	-
15:25	0.0	5.9	15:25	3.0	5.5	-
15:26	0.3	5.9	15:26	11.0	5.9	-
15:27	0.3	5.9	15:27	7.6	5.9	-
15:28	0.0	5.9	15:28	1.4	5.8	-
15:29	1.0	6.0	15:29	0.0	5.7	-

PARTICULATE DATA						
Upwind			Downwind			Exceeds Particulate Alarm Limit
Time	Concentration ($\mu\text{g}/\text{m}^3$)	15-Min Avg Concentration ($\mu\text{g}/\text{m}^3$)	Time	Concentration ($\mu\text{g}/\text{m}^3$)	15-Min Avg Concentration ($\mu\text{g}/\text{m}^3$)	
15:30	0.3	4.8	15:30	1.4	5.5	-
15:31	0.5	3.2	15:31	1.0	5.3	-
15:32	0.8	3.2	15:32	1.0	5.0	-
15:33	0.0	3.1	15:33	0.6	3.3	-
15:34	0.5	2.5	15:34	0.0	2.9	-
15:35	2.0	2.1	15:35	0.0	2.6	-
15:36	0.0	1.8	15:36	0.0	2.3	-
15:37	0.0	1.3	15:37	0.0	2.1	-
15:38	0.0	0.5	15:38	1.2	2.0	-
15:39	9.0	1.0	15:39	0.2	1.9	-

Friday, May 26, 2023

Number of Instances Where Downwind VOCs Exceeds Upwind VOCs + 5 = 0
 Number of Comparable Data Points = 445
 Start Time: 7:59
 End Time: 15:39

PID DATA						
Upwind			Downwind			Exceeds Particulate Alarm Limit
Time	Concentration (ppm)	15-Min Avg Concentration (ppm)	Time	Concentration (ppm)	15-Min Avg Concentration (ppm)	
7:59	0.0	-	7:59	-	-	-
8:00	0.0	-	8:00	0.0	-	-
8:01	0.0	-	8:01	0.0	-	-
8:02	0.0	-	8:02	0.0	-	-
8:03	0.0	-	8:03	0.0	-	-
8:04	0.0	-	8:04	0.0	-	-
8:05	0.0	-	8:05	0.0	-	-
8:06	0.0	-	8:06	0.0	-	-
8:07	0.0	-	8:07	0.0	-	-
8:08	0.0	-	8:08	0.0	-	-
8:09	0.0	-	8:09	0.0	-	-
8:10	0.0	-	8:10	0.0	-	-
8:11	0.0	-	8:11	0.0	-	-
8:12	0.0	-	8:12	0.0	-	-
8:13	0.0	-	8:13	0.0	-	-
8:14	0.0	0.0	8:14	0.0	-	-
8:15	0.0	0.0	8:15	0.0	0.0	-
8:16	0.0	0.0	8:16	0.0	0.0	-
8:17	0.0	0.0	8:17	0.0	0.0	-
8:18	0.0	0.0	8:18	0.0	0.0	-
8:19	0.0	0.0	8:19	0.0	0.0	-
8:20	0.0	0.0	8:20	0.0	0.0	-
8:21	0.0	0.0	8:21	0.0	0.0	-
8:22	0.0	0.0	8:22	0.0	0.0	-
8:23	0.0	0.0	8:23	0.0	0.0	-
8:24	0.0	0.0	8:24	0.0	0.0	-
8:25	0.0	0.0	8:25	0.0	0.0	-
8:26	0.0	0.0	8:26	0.0	0.0	-
8:27	0.0	0.0	8:27	0.0	0.0	-
8:28	0.0	0.0	8:28	0.0	0.0	-
8:29	0.0	0.0	8:29	0.0	0.0	-
8:30	0.0	0.0	8:30	0.0	0.0	-
8:31	0.0	0.0	8:31	0.0	0.0	-
8:32	0.0	0.0	8:32	0.0	0.0	-
8:33	0.0	0.0	8:33	0.0	0.0	-
8:34	0.0	0.0	8:34	0.0	0.0	-
8:35	0.0	0.0	8:35	0.0	0.0	-
8:36	0.0	0.0	8:36	0.0	0.0	-
8:37	0.0	0.0	8:37	0.0	0.0	-
8:38	0.0	0.0	8:38	0.0	0.0	-
8:39	0.0	0.0	8:39	0.0	0.0	-
8:40	0.0	0.0	8:40	0.0	0.0	-
8:41	0.0	0.0	8:41	0.0	0.0	-
8:42	0.0	0.0	8:42	0.0	0.0	-
8:43	0.0	0.0	8:43	0.0	0.0	-
8:44	0.0	0.0	8:44	0.0	0.0	-
8:45	0.0	0.0	8:45	0.0	0.0	-
8:46	0.0	0.0	8:46	0.0	0.0	-
8:47	0.0	0.0	8:47	0.0	0.0	-
8:48	0.0	0.0	8:48	0.0	0.0	-
8:49	0.0	0.0	8:49	0.0	0.0	-
8:50	0.0	0.0	8:50	0.0	0.0	-
8:51	0.0	0.0	8:51	0.0	0.0	-
8:52	0.0	0.0	8:52	0.0	0.0	-
8:53	0.0	0.0	8:53	0.0	0.0	-
8:54	0.0	0.0	8:54	0.0	0.0	-
8:55	0.0	0.0	8:55	0.0	0.0	-
8:56	0.0	0.0	8:56	0.0	0.0	-
8:57	0.0	0.0	8:57	0.0	0.0	-
8:58	0.0	0.0	8:58	0.0	0.0	-
8:59	0.0	0.0	8:59	0.0	0.0	-
9:00	0.0	0.0	9:00	0.0	0.0	-
9:01	0.0	0.0	9:01	0.0	0.0	-
9:02	0.0	0.0	9:02	0.0	0.0	-
9:03	0.0	0.0	9:03	0.0	0.0	-
9:04	0.0	0.0	9:04	0.0	0.0	-
9:05	0.0	0.0	9:05	0.0	0.0	-
9:06	0.0	0.0	9:06	0.0	0.0	-
9:07	0.0	0.0	9:07	0.0	0.0	-
9:08	0.0	0.0	9:08	0.0	0.0	-
9:09	0.0	0.0	9:09	0.0	0.0	-

PID DATA						
Upwind			Downwind			Exceeds Particulate Alarm Limit
Time	Concentration (ppm)	15-Min Avg Concentration (ppm)	Time	Concentration (ppm)	15-Min Avg Concentration (ppm)	
9:10	0.0	0.0	9:10	0.0	0.0	-
9:11	0.0	0.0	9:11	0.0	0.0	-
9:12	0.0	0.0	9:12	0.0	0.0	-
9:13	0.0	0.0	9:13	0.0	0.0	-
9:14	0.0	0.0	9:14	0.0	0.0	-
9:15	0.0	0.0	9:15	0.0	0.0	-
9:16	0.0	0.0	9:16	0.0	0.0	-
9:17	0.0	0.0	9:17	0.0	0.0	-
9:18	0.0	0.0	9:18	0.0	0.0	-
9:19	0.0	0.0	9:19	0.0	0.0	-
9:20	0.0	0.0	9:20	0.0	0.0	-
9:21	0.0	0.0	9:21	0.0	0.0	-
9:22	0.0	0.0	9:22	0.0	0.0	-
9:23	0.0	0.0	9:23	0.0	0.0	-
9:24	0.0	0.0	9:24	0.0	0.0	-
9:25	0.0	0.0	9:25	0.0	0.0	-
9:26	0.0	0.0	9:26	0.0	0.0	-
9:27	0.0	0.0	9:27	0.0	0.0	-
9:28	0.0	0.0	9:28	0.0	0.0	-
9:29	0.0	0.0	9:29	0.0	0.0	-
9:30	0.0	0.0	9:30	0.0	0.0	-
9:31	0.0	0.0	9:31	0.0	0.0	-
9:32	0.0	0.0	9:32	0.0	0.0	-
9:33	0.0	0.0	9:33	0.0	0.0	-
9:34	0.0	0.0	9:34	0.0	0.0	-
9:35	0.0	0.0	9:35	0.0	0.0	-
9:36	0.0	0.0	9:36	0.0	0.0	-
9:37	0.0	0.0	9:37	0.0	0.0	-
9:38	0.0	0.0	9:38	0.0	0.0	-
9:39	0.0	0.0	9:39	0.0	0.0	-
9:40	0.0	0.0	9:40	0.0	0.0	-
9:41	0.0	0.0	9:41	0.0	0.0	-
9:42	0.0	0.0	9:42	0.0	0.0	-
9:43	0.0	0.0	9:43	0.0	0.0	-
9:44	0.0	0.0	9:44	0.0	0.0	-
9:45	0.0	0.0	9:45	0.0	0.0	-
9:46	0.0	0.0	9:46	0.0	0.0	-
9:47	0.0	0.0	9:47	0.0	0.0	-
9:48	0.0	0.0	9:48	0.0	0.0	-
9:49	0.0	0.0	9:49	0.0	0.0	-
9:50	0.0	0.0	9:50	0.0	0.0	-
9:51	0.0	0.0	9:51	0.0	0.0	-
9:52	0.0	0.0	9:52	0.0	0.0	-
9:53	0.0	0.0	9:53	0.0	0.0	-
9:54	0.0	0.0	9:54	0.0	0.0	-
9:55	0.0	0.0	9:55	0.0	0.0	-
9:56	0.0	0.0	9:56	0.0	0.0	-
9:57	0.0	0.0	9:57	0.0	0.0	-
9:58	0.0	0.0	9:58	0.0	0.0	-
9:59	0.0	0.0	9:59	0.0	0.0	-
10:00	0.0	0.0	10:00	0.0	0.0	-
10:01	0.0	0.0	10:01	0.0	0.0	-
10:02	0.0	0.0	10:02	0.0	0.0	-
10:03	0.0	0.0	10:03	0.0	0.0	-
10:04	0.0	0.0	10:04	0.0	0.0	-
10:05	0.0	0.0	10:05	0.0	0.0	-
10:06	0.0	0.0	10:06	0.0	0.0	-
10:07	0.0	0.0	10:07	0.0	0.0	-
10:08	0.0	0.0	10:08	0.0	0.0	-
10:09	0.0	0.0	10:09	0.0	0.0	-
10:10	0.0	0.0	10:10	0.0	0.0	-
10:11	0.0	0.0	10:11	0.0	0.0	-
10:12	0.0	0.0	10:12	0.0	0.0	-
10:13	0.0	0.0	10:13	0.0	0.0	-
10:14	0.0	0.0	10:14	0.0	0.0	-
10:15	0.0	0.0	10:15	0.0	0.0	-
10:16	0.0	0.0	10:16	0.0	0.0	-
10:17	0.0	0.0	10:17	0.0	0.0	-
10:18	0.0	0.0	10:18	0.0	0.0	-
10:19	0.0	0.0	10:19	0.0	0.0	-
10:20	0.0	0.0	10:20	0.0	0.0	-
10:21	0.0	0.0	10:21	0.0	0.0	-
10:22	0.0	0.0	10:22	0.0	0.0	-
10:23	0.0	0.0	10:23	0.0	0.0	-
10:24	0.0	0.0	10:24	0.0	0.0	-
10:25	0.0	0.0	10:25	0.0	0.0	-

PID DATA						
Upwind			Downwind			Exceeds Particulate Alarm Limit
Time	Concentration (ppm)	15-Min Avg Concentration (ppm)	Time	Concentration (ppm)	15-Min Avg Concentration (ppm)	
10:26	0.0	0.0	10:26	0.0	0.0	-
10:27	0.0	0.0	10:27	0.0	0.0	-
10:28	0.0	0.0	10:28	0.0	0.0	-
10:29	0.0	0.0	10:29	0.0	0.0	-
10:30	0.0	0.0	10:30	0.0	0.0	-
10:31	0.0	0.0	10:31	0.0	0.0	-
10:32	0.0	0.0	10:32	0.0	0.0	-
10:33	0.0	0.0	10:33	0.0	0.0	-
10:34	0.0	0.0	10:34	0.0	0.0	-
10:35	0.0	0.0	10:35	0.0	0.0	-
10:36	0.0	0.0	10:36	0.0	0.0	-
10:37	0.0	0.0	10:37	0.0	0.0	-
10:38	0.0	0.0	10:38	0.0	0.0	-
10:39	0.0	0.0	10:39	0.0	0.0	-
10:40	0.0	0.0	10:40	0.0	0.0	-
10:41	0.0	0.0	10:41	0.0	0.0	-
10:42	0.0	0.0	10:42	0.0	0.0	-
10:43	0.0	0.0	10:43	0.0	0.0	-
10:44	0.0	0.0	10:44	0.0	0.0	-
10:45	0.0	0.0	10:45	0.0	0.0	-
10:46	0.0	0.0	10:46	0.0	0.0	-
10:47	0.0	0.0	10:47	0.0	0.0	-
10:48	0.0	0.0	10:48	0.0	0.0	-
10:49	0.0	0.0	10:49	0.0	0.0	-
10:50	0.0	0.0	10:50	0.0	0.0	-
10:51	0.0	0.0	10:51	0.0	0.0	-
10:52	0.0	0.0	10:52	0.0	0.0	-
10:53	0.0	0.0	10:53	0.0	0.0	-
10:54	0.0	0.0	10:54	0.0	0.0	-
10:55	0.0	0.0	10:55	0.0	0.0	-
10:56	0.0	0.0	10:56	0.0	0.0	-
10:57	0.0	0.0	10:57	0.0	0.0	-
10:58	0.0	0.0	10:58	0.0	0.0	-
10:59	0.0	0.0	10:59	0.0	0.0	-
11:00	0.0	0.0	11:00	0.0	0.0	-
11:01	0.0	0.0	11:01	0.0	0.0	-
11:02	0.0	0.0	11:02	0.0	0.0	-
11:03	0.0	0.0	11:03	0.0	0.0	-
11:04	0.0	0.0	11:04	0.0	0.0	-
11:05	0.0	0.0	11:05	0.0	0.0	-
11:06	0.0	0.0	11:06	0.0	0.0	-
11:07	0.0	0.0	11:07	0.0	0.0	-
11:08	0.0	0.0	11:08	0.0	0.0	-
11:09	0.0	0.0	11:09	0.0	0.0	-
11:10	0.0	0.0	11:10	0.0	0.0	-
11:11	0.0	0.0	11:11	0.0	0.0	-
11:12	0.0	0.0	11:12	0.0	0.0	-
11:13	0.0	0.0	11:13	0.0	0.0	-
11:14	0.0	0.0	11:14	0.0	0.0	-
11:15	0.0	0.0	11:15	0.0	0.0	-
11:16	0.0	0.0	11:16	0.0	0.0	-
11:17	0.0	0.0	11:17	0.0	0.0	-
11:18	0.0	0.0	11:18	0.0	0.0	-
11:19	0.0	0.0	11:19	0.0	0.0	-
11:20	0.0	0.0	11:20	0.0	0.0	-
11:21	0.0	0.0	11:21	0.0	0.0	-
11:22	0.0	0.0	11:22	0.0	0.0	-
11:23	0.0	0.0	11:23	0.0	0.0	-
11:24	0.0	0.0	11:24	0.0	0.0	-
11:25	0.0	0.0	11:25	0.0	0.0	-
11:26	0.0	0.0	11:26	0.0	0.0	-
11:27	0.0	0.0	11:27	0.0	0.0	-
11:28	0.0	0.0	11:28	0.0	0.0	-
11:29	0.0	0.0	11:29	0.0	0.0	-
11:30	0.0	0.0	11:30	0.0	0.0	-
11:31	0.0	0.0	11:31	0.0	0.0	-
11:32	0.0	0.0	11:32	0.0	0.0	-
11:33	0.0	0.0	11:33	0.0	0.0	-
11:34	0.0	0.0	11:34	0.0	0.0	-
11:35	0.0	0.0	11:35	0.0	0.0	-
11:36	0.0	0.0	11:36	0.0	0.0	-
11:37	0.0	0.0	11:37	0.0	0.0	-
11:38	0.0	0.0	11:38	0.0	0.0	-
11:39	0.0	0.0	11:39	0.0	0.0	-
11:40	0.0	0.0	11:40	0.0	0.0	-
11:41	0.0	0.0	11:41	0.0	0.0	-

PID DATA						
Upwind			Downwind			Exceeds Particulate Alarm Limit
Time	Concentration (ppm)	15-Min Avg Concentration (ppm)	Time	Concentration (ppm)	15-Min Avg Concentration (ppm)	
11:42	0.0	0.0	11:42	0.0	0.0	-
11:43	0.0	0.0	11:43	0.0	0.0	-
11:44	0.0	0.0	11:44	0.0	0.0	-
11:45	0.0	0.0	11:45	0.0	0.0	-
11:46	0.0	0.0	11:46	0.0	0.0	-
11:47	0.0	0.0	11:47	0.0	0.0	-
11:48	0.0	0.0	11:48	0.0	0.0	-
11:49	0.0	0.0	11:49	0.0	0.0	-
11:50	0.0	0.0	11:50	0.0	0.0	-
11:51	0.0	0.0	11:51	0.0	0.0	-
11:52	0.0	0.0	11:52	0.0	0.0	-
11:53	0.0	0.0	11:53	0.0	0.0	-
11:54	0.0	0.0	11:54	0.0	0.0	-
11:55	0.0	0.0	11:55	0.0	0.0	-
11:56	0.0	0.0	11:56	0.0	0.0	-
11:57	0.0	0.0	11:57	0.0	0.0	-
11:58	0.0	0.0	11:58	0.0	0.0	-
11:59	0.0	0.0	11:59	0.0	0.0	-
12:00	0.0	0.0	12:00	0.0	0.0	-
12:01	0.0	0.0	12:01	0.0	0.0	-
12:02	0.0	0.0	12:02	0.0	0.0	-
12:03	0.0	0.0	12:03	0.0	0.0	-
12:04	0.0	0.0	12:04	0.0	0.0	-
12:05	0.0	0.0	12:05	0.0	0.0	-
12:06	0.0	0.0	12:06	0.0	0.0	-
12:07	0.0	0.0	12:07	0.0	0.0	-
12:08	0.0	0.0	12:08	0.0	0.0	-
12:09	0.0	0.0	12:09	0.0	0.0	-
12:10	0.0	0.0	12:10	0.0	0.0	-
12:11	0.0	0.0	12:11	0.0	0.0	-
12:12	0.0	0.0	12:12	0.0	0.0	-
12:13	0.0	0.0	12:13	0.0	0.0	-
12:14	0.0	0.0	12:14	0.0	0.0	-
12:15	0.0	0.0	12:15	0.0	0.0	-
12:16	0.0	0.0	12:16	0.0	0.0	-
12:17	0.0	0.0	12:17	0.0	0.0	-
12:18	0.0	0.0	12:18	0.0	0.0	-
12:19	0.0	0.0	12:19	0.0	0.0	-
12:20	0.0	0.0	12:20	0.0	0.0	-
12:21	0.0	0.0	12:21	0.0	0.0	-
12:22	0.0	0.0	12:22	0.0	0.0	-
12:23	0.0	0.0	12:23	0.0	0.0	-
12:24	0.0	0.0	12:24	0.0	0.0	-
12:25	0.0	0.0	12:25	0.0	0.0	-
12:26	0.0	0.0	12:26	0.0	0.0	-
12:27	0.0	0.0	12:27	0.0	0.0	-
12:28	0.0	0.0	12:28	0.0	0.0	-
12:29	0.0	0.0	12:29	0.0	0.0	-
12:30	0.0	0.0	12:30	0.0	0.0	-
12:31	0.0	0.0	12:31	0.0	0.0	-
12:32	0.0	0.0	12:32	0.0	0.0	-
12:33	0.0	0.0	12:33	0.0	0.0	-
12:34	0.0	0.0	12:34	0.0	0.0	-
12:35	0.0	0.0	12:35	0.0	0.0	-
12:36	0.0	0.0	12:36	0.0	0.0	-
12:37	0.0	0.0	12:37	0.0	0.0	-
12:38	0.0	0.0	12:38	0.0	0.0	-
12:39	0.0	0.0	12:39	0.0	0.0	-
12:40	0.0	0.0	12:40	0.0	0.0	-
12:41	0.0	0.0	12:41	0.0	0.0	-
12:42	0.0	0.0	12:42	0.0	0.0	-
12:43	0.0	0.0	12:43	0.0	0.0	-
12:44	0.0	0.0	12:44	0.0	0.0	-
12:45	0.0	0.0	12:45	0.0	0.0	-
12:46	0.0	0.0	12:46	0.0	0.0	-
12:47	0.0	0.0	12:47	0.0	0.0	-
12:48	0.0	0.0	12:48	0.0	0.0	-
12:49	0.0	0.0	12:49	0.0	0.0	-
12:50	0.0	0.0	12:50	0.0	0.0	-
12:51	0.0	0.0	12:51	0.0	0.0	-
12:52	0.0	0.0	12:52	0.0	0.0	-
12:53	0.0	0.0	12:53	0.0	0.0	-
12:54	0.0	0.0	12:54	0.0	0.0	-
12:55	0.0	0.0	12:55	0.0	0.0	-
12:56	0.0	0.0	12:56	0.0	0.0	-
12:57	0.0	0.0	12:57	0.0	0.0	-

PID DATA						
Upwind			Downwind			Exceeds Particulate Alarm Limit
Time	Concentration (ppm)	15-Min Avg Concentration (ppm)	Time	Concentration (ppm)	15-Min Avg Concentration (ppm)	
12:58	0.0	0.0	12:58	0.0	0.0	-
12:59	0.0	0.0	12:59	0.0	0.0	-
13:00	0.0	0.0	13:00	0.0	0.0	-
13:01	0.0	0.0	13:01	0.0	0.0	-
13:02	0.0	0.0	13:02	0.0	0.0	-
13:03	0.0	0.0	13:03	0.0	0.0	-
13:04	0.0	0.0	13:04	0.0	0.0	-
13:05	0.0	0.0	13:05	0.0	0.0	-
13:06	0.0	0.0	13:06	0.0	0.0	-
13:07	0.0	0.0	13:07	0.0	0.0	-
13:08	0.0	0.0	13:08	0.0	0.0	-
13:09	0.0	0.0	13:09	0.0	0.0	-
13:10	0.0	0.0	13:10	0.0	0.0	-
13:11	0.0	0.0	13:11	0.0	0.0	-
13:12	0.0	0.0	13:12	0.0	0.0	-
13:13	0.0	0.0	13:13	0.0	0.0	-
13:14	0.0	0.0	13:14	0.0	0.0	-
13:15	0.0	0.0	13:15	0.0	0.0	-
13:16	0.0	0.0	13:16	0.0	0.0	-
13:17	0.0	0.0	13:17	0.0	0.0	-
13:18	0.0	0.0	13:18	0.0	0.0	-
13:19	0.0	0.0	13:19	0.0	0.0	-
13:20	0.0	0.0	13:20	0.0	0.0	-
13:21	0.0	0.0	13:21	0.0	0.0	-
13:22	0.0	0.0	13:22	0.0	0.0	-
13:23	0.0	0.0	13:23	0.0	0.0	-
13:24	0.0	0.0	13:24	0.0	0.0	-
13:25	0.0	0.0	13:25	0.0	0.0	-
13:26	0.0	0.0	13:26	0.0	0.0	-
13:27	0.0	0.0	13:27	0.0	0.0	-
13:28	0.0	0.0	13:28	0.0	0.0	-
13:29	0.0	0.0	13:29	0.0	0.0	-
13:30	0.0	0.0	13:30	0.0	0.0	-
13:31	0.0	0.0	13:31	0.0	0.0	-
13:32	0.0	0.0	13:32	0.0	0.0	-
13:33	0.0	0.0	13:33	0.0	0.0	-
13:34	0.0	0.0	13:34	0.0	0.0	-
13:35	0.0	0.0	13:35	0.0	0.0	-
13:36	0.0	0.0	13:36	0.0	0.0	-
13:37	0.0	0.0	13:37	0.0	0.0	-
13:38	0.0	0.0	13:38	0.0	0.0	-
13:39	0.0	0.0	13:39	0.0	0.0	-
13:40	0.0	0.0	13:40	0.0	0.0	-
13:41	0.0	0.0	13:41	0.0	0.0	-
13:42	0.0	0.0	13:42	0.0	0.0	-
13:43	0.0	0.0	13:43	0.0	0.0	-
13:44	0.0	0.0	13:44	0.0	0.0	-
13:45	0.0	0.0	13:45	0.0	0.0	-
13:46	0.0	0.0	13:46	0.0	0.0	-
13:47	0.0	0.0	13:47	0.0	0.0	-
13:48	0.0	0.0	13:48	0.0	0.0	-
13:49	0.0	0.0	13:49	0.0	0.0	-
13:50	0.0	0.0	13:50	0.0	0.0	-
13:51	0.0	0.0	13:51	0.0	0.0	-
13:52	0.0	0.0	13:52	0.0	0.0	-
13:53	0.0	0.0	13:53	0.0	0.0	-
13:54	0.0	0.0	13:54	0.0	0.0	-
13:55	0.0	0.0	13:55	0.0	0.0	-
13:56	0.0	0.0	13:56	0.0	0.0	-
13:57	0.0	0.0	13:57	0.0	0.0	-
13:58	0.0	0.0	13:58	0.0	0.0	-
13:59	0.0	0.0	13:59	0.0	0.0	-
14:00	0.0	0.0	14:00	0.0	0.0	-
14:01	0.0	0.0	14:01	0.0	0.0	-
14:02	0.0	0.0	14:02	0.0	0.0	-
14:03	0.0	0.0	14:03	0.0	0.0	-
14:04	0.0	0.0	14:04	0.0	0.0	-
14:05	0.0	0.0	14:05	0.0	0.0	-
14:06	0.0	0.0	14:06	0.0	0.0	-
14:07	0.0	0.0	14:07	0.0	0.0	-
14:08	0.0	0.0	14:08	0.0	0.0	-
14:09	0.0	0.0	14:09	0.0	0.0	-
14:10	0.0	0.0	14:10	0.0	0.0	-
14:11	0.0	0.0	14:11	0.0	0.0	-
14:12	0.0	0.0	14:12	0.0	0.0	-
14:13	0.0	0.0	14:13	0.0	0.0	-

PID DATA						
Upwind			Downwind			Exceeds Particulate Alarm Limit
Time	Concentration (ppm)	15-Min Avg Concentration (ppm)	Time	Concentration (ppm)	15-Min Avg Concentration (ppm)	
14:14	0.0	0.0	14:14	0.0	0.0	-
14:15	0.0	0.0	14:15	0.0	0.0	-
14:16	0.0	0.0	14:16	0.0	0.0	-
14:17	0.0	0.0	14:17	0.0	0.0	-
14:18	0.0	0.0	14:18	0.0	0.0	-
14:19	0.0	0.0	14:19	0.0	0.0	-
14:20	0.0	0.0	14:20	0.0	0.0	-
14:21	0.0	0.0	14:21	0.0	0.0	-
14:22	0.0	0.0	14:22	0.0	0.0	-
14:23	0.0	0.0	14:23	0.0	0.0	-
14:24	0.0	0.0	14:24	0.0	0.0	-
14:25	0.0	0.0	14:25	0.0	0.0	-
14:26	0.0	0.0	14:26	0.0	0.0	-
14:27	0.0	0.0	14:27	0.0	0.0	-
14:28	0.0	0.0	14:28	0.0	0.0	-
14:29	0.0	0.0	14:29	0.0	0.0	-
14:30	0.0	0.0	14:30	0.0	0.0	-
14:31	0.0	0.0	14:31	0.0	0.0	-
14:32	0.0	0.0	14:32	0.0	0.0	-
14:33	0.0	0.0	14:33	0.0	0.0	-
14:34	0.0	0.0	14:34	0.0	0.0	-
14:35	0.0	0.0	14:35	0.0	0.0	-
14:36	0.0	0.0	14:36	0.0	0.0	-
14:37	0.0	0.0	14:37	0.0	0.0	-
14:38	0.0	0.0	14:38	0.0	0.0	-
14:39	0.0	0.0	14:39	0.0	0.0	-
14:40	0.0	0.0	14:40	0.0	0.0	-
14:41	0.0	0.0	14:41	0.0	0.0	-
14:42	0.0	0.0	14:42	0.0	0.0	-
14:43	0.0	0.0	14:43	0.0	0.0	-
14:44	0.0	0.0	14:44	0.0	0.0	-
14:45	0.0	0.0	14:45	0.0	0.0	-
14:46	0.0	0.0	14:46	0.0	0.0	-
14:47	0.0	0.0	14:47	0.0	0.0	-
14:48	0.0	0.0	14:48	0.0	0.0	-
14:49	0.0	0.0	14:49	0.0	0.0	-
14:50	0.0	0.0	14:50	0.0	0.0	-
14:51	0.0	0.0	14:51	0.0	0.0	-
14:52	0.0	0.0	14:52	0.0	0.0	-
14:53	0.0	0.0	14:53	0.0	0.0	-
14:54	0.0	0.0	14:54	0.0	0.0	-
14:55	0.0	0.0	14:55	0.0	0.0	-
14:56	0.0	0.0	14:56	0.0	0.0	-
14:57	0.0	0.0	14:57	0.0	0.0	-
14:58	0.0	0.0	14:58	0.0	0.0	-
14:59	0.0	0.0	14:59	0.0	0.0	-
15:00	0.0	0.0	15:00	0.0	0.0	-
15:01	0.0	0.0	15:01	0.0	0.0	-
15:02	0.0	0.0	15:02	0.0	0.0	-
15:03	0.0	0.0	15:03	0.0	0.0	-
15:04	0.0	0.0	15:04	0.0	0.0	-
15:05	0.0	0.0	15:05	0.0	0.0	-
15:06	0.0	0.0	15:06	0.0	0.0	-
15:07	0.0	0.0	15:07	0.0	0.0	-
15:08	0.0	0.0	15:08	0.0	0.0	-
15:09	0.0	0.0	15:09	0.0	0.0	-
15:10	0.0	0.0	15:10	0.0	0.0	-
15:11	0.0	0.0	15:11	0.0	0.0	-
15:12	0.0	0.0	15:12	0.0	0.0	-
15:13	0.0	0.0	15:13	0.0	0.0	-
15:14	0.0	0.0	15:14	0.0	0.0	-
15:15	0.0	0.0	15:15	0.0	0.0	-
15:16	0.0	0.0	15:16	0.0	0.0	-
15:17	0.0	0.0	15:17	0.0	0.0	-
15:18	0.0	0.0	15:18	0.0	0.0	-
15:19	0.0	0.0	15:19	0.0	0.0	-
15:20	0.0	0.0	15:20	0.0	0.0	-
15:21	0.0	0.0	15:21	0.0	0.0	-
15:22	0.0	0.0	15:22	0.0	0.0	-
15:23	0.0	0.0	15:23	0.0	0.0	-
15:24	0.0	0.0	15:24	0.0	0.0	-
15:25	0.0	0.0	15:25	0.0	0.0	-
15:26	0.0	0.0	15:26	0.0	0.0	-
15:27	0.0	0.0	15:27	0.0	0.0	-
15:28	0.0	0.0	15:28	0.0	0.0	-
15:29	0.0	0.0	15:29	0.0	0.0	-

PID DATA						
Upwind			Downwind			Exceeds Particulate Alarm Limit
Time	Concentration (ppm)	15-Min Avg Concentration (ppm)	Time	Concentration (ppm)	15-Min Avg Concentration (ppm)	
15:30	0.0	0.0	15:30	0.0	0.0	-
15:31	0.0	0.0	15:31	0.0	0.0	-
15:32	0.0	0.0	15:32	0.0	0.0	-
15:33	0.0	0.0	15:33	0.0	0.0	-
15:34	0.0	0.0	15:34	0.0	0.0	-
15:35	0.0	0.0	15:35	0.0	0.0	-
15:36	0.0	0.0	15:36	0.0	0.0	-
15:37	0.0	0.0	15:37	0.0	0.0	-
15:38	0.0	0.0	15:38	0.0	0.0	-
15:39	0.0	0.0	15:39	0.0	0.0	-