

**DAILY SITE INSPECTION/FIELD ACTIVITY REPORT**

BCP Site No.:	C224148	AUTHOR:	Daniel Carazas
PROJECT NO.:	3165.0006R000	DATE:	12/15/2022
PROJECT:	Sunset Industrial Park 74 20 th St., Brooklyn, NY	WEATHER:	Cloudy – Likely Rain, 32-42 °F, Wind: SW @ 10-18 mph, Humidity: 70%, Pressure: 30.23" Hg
CLIENT:	SIP Holdings Venture, LLC	TIME:	7:00 AM – 2:00 PM

CONTRACTOR AND EQUIPMENT:	PERSONNEL PRESENT AT SITE AND AFFILIATION:
<u>Blakeslee (Superstructure/Crane Contractor)</u> <ul style="list-style-type: none">Crawler CraneManliftForklift <u>Kingdom (Excavation/Foundation Contractor)</u> <ul style="list-style-type: none">Komatsu Mini ExcavatorBobcat T770 Skid Steer	<u>Roux Environmental Engineering & Geology, D.P.C</u> Patrick Perry, Staff Assistant Geologist <u>Kingdom</u> Dawid Szmuc, Foreman <u>Suffolk</u> Caled Ho, Supervisor

GENERAL COMMENTS:

As part of the of the NYSDEC-approved Remedial Action Work Plan and modifications, Roux Environmental Engineering and Geology D.P.C. (Roux) performed environmental oversight and operated air monitoring equipment in compliance with the Community Air Monitoring Plan (CAMP) during foundation installation activities.

RAWP Activities Performed:

- Blakeslee continued to operate a crawler crane on top of a designated crane pad constructed of RCA and wooden planks. The crane is being used to offload precast building materials from trailers and erect onsite.
- No intrusive work was completed today by Kingdom.

CAMP Performed:

- CAMP was performed for the duration that Roux was onsite observing intrusive work. No exceedances of particulates or VOCs were recorded.

Other Relevant Comments or Issues:

- Worked ended at about 2 PM due to inclement weather.

Upcoming work activities:

- Blakeslee will continue precast concrete erection, moving south to north across the site. The superstructure erection phase of construction is estimated to continue through approximately February 2023.
- Kingdom will remain onsite through approximately the end of February 2023 to complete SSDS, vapor barrier, and foundation slab installation.
- Roux will continue to perform full-time oversight and CAMP during intrusive construction activities and perform inspections during installation of engineering controls.

Submitted By: Daniel Carazas of
Roux Environmental Engineering and Geology, D.P.C.

Approved By: Levi Curnutte of
Roux Environmental Engineering and Geology, D.P.C.

DAILY SITE INSPECTION/FIELD ACTIVITY REPORT

BCP Site No.:	C224148	AUTHOR:	Daniel Carazas
PROJECT NO.:	3165.0006R000	DATE:	12/15/2022
PROJECT:	Sunset Industrial Park 74 20 th St., Brooklyn, NY	WEATHER:	Cloudy – Likely Rain, 32-42 °F, Wind: SW @ 10-18 mph, Humidity: 70%, Pressure: 30.23" Hg
CLIENT:	SIP Holdings Venture, LLC	TIME:	7:00 AM – 2:00 PM

PHOTOS:

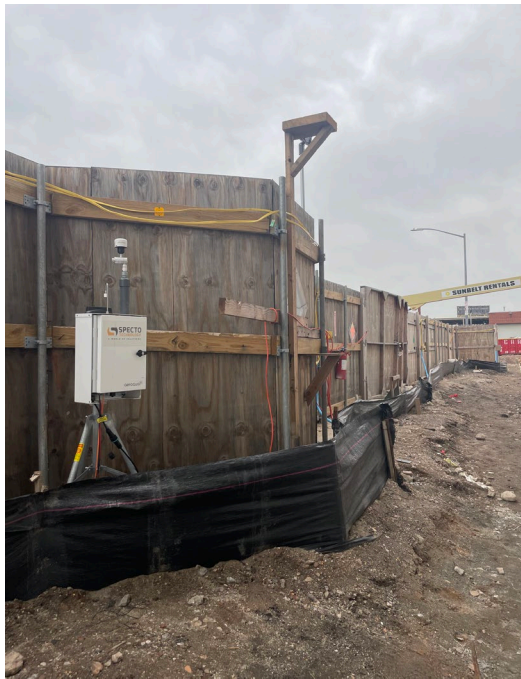


Photo 1:

Looking north east: View of the downwind CAMP station (21st Street side) and erosion controls.



Photo 2:

Looking North: Blakeslee continued unloading and setting pre-cast concrete via crane.

Submitted By: Daniel Carazas of
Roux Environmental Engineering and Geology, D.P.C.

Approved By: Levi Curnutte of
Roux Environmental Engineering and Geology, D.P.C.

BCP Site No.:	C224148	AUTHOR:	Daniel Carazas
PROJECT NO.:	3165.0006R000	DATE:	12/15/2022
PROJECT:	Sunset Industrial Park 74 20 th St., Brooklyn, NY	WEATHER:	Cloudy – Likely Rain, 32-42 °F, Wind: SW @ 10-18 mph, Humidity: 70%, Pressure: 30.23" Hg
CLIENT:	SIP Holdings Venture, LLC	TIME:	7:00 AM – 2:00 PM

**Photo 5:**

Looking North West: Progress at the time of work stoppage due to weather conditions.

**Photo 6:**

Looking North West: Progress at the time of work stoppage due to weather conditions.

Submitted By: Daniel Carazas of
Roux Environmental Engineering and Geology, D.P.C.

Approved By: Levi Curnutte of
Roux Environmental Engineering and Geology, D.P.C.

Site Map



Approximately extent of crane pad installation

Submitted By: Daniel Carazas of
Roux Environmental Engineering and Geology, D.P.C.

Approved By: Levi Curnutte of
Roux Environmental Engineering and Geology, D.P.C.

Roux Environmental Engineering and Geology, D.P.C.
Community Air Monitoring Program - DUST

Project : Sunset Industrial Park
 PM : Levi Curnutte
 Location : Brooklyn, New York
 Date : 2022-12-15

PM average period: 15 min
 VOC averaging period : 15 min

Unit of measurement:
 PM : mg/m3
 VOC : ppm

	Station #1(AQ 2121) PM10 Concentration	Station #2(AQ 2122) PM10 Concentration	PM10 Site Contribution	Comments
12/15/2022 07:00:00	0.003	0.003	0.000	
12/15/2022 07:15:00	0.011	0.003	0.000	
12/15/2022 07:30:00	0.029	0.003	0.000	
12/15/2022 07:45:00	0.004	0.003	0.000	
12/15/2022 08:00:00	0.005	0.003	0.000	
12/15/2022 08:15:00	0.005	0.007	0.001	
12/15/2022 08:30:00	0.004	0.003	0.000	
12/15/2022 08:45:00	0.004	0.004	0.000	
12/15/2022 09:00:00	0.004	0.004	0.000	
12/15/2022 09:15:00	0.005	0.004	0.000	
12/15/2022 09:30:00	0.011	0.004	0.000	
12/15/2022 09:45:00	0.004	0.004	0.000	
12/15/2022 10:00:00	0.006	0.003	0.000	
12/15/2022 10:15:00	0.005	0.003	0.000	
12/15/2022 10:30:00	0.007	0.003	0.000	
12/15/2022 10:45:00	0.004	0.003	0.000	
12/15/2022 11:00:00	0.004	0.004	0.000	
12/15/2022 11:15:00	0.005	0.004	0.000	
12/15/2022 11:30:00	0.004	0.004	0.000	
12/15/2022 11:45:00	0.004	0.004	0.000	
12/15/2022 12:00:00	0.004	0.004	0.000	
12/15/2022 12:15:00	0.004	0.004	0.000	
12/15/2022 12:30:00	0.004	0.004	0.000	
12/15/2022 12:45:00	0.005	0.004	0.000	
12/15/2022 13:00:00	0.005	0.004	0.000	
12/15/2022 13:15:00	0.005	0.004	0.000	
12/15/2022 13:30:00	0.006	0.004	0.000	
12/15/2022 13:45:00	0.005	0.004	0.000	
12/15/2022 14:00:00	0.005	0.004	0.000	
12/15/2022 14:15:00	0.005	0.005	0.000	
12/15/2022 14:30:00	0.005	0.005	0.000	
12/15/2022 14:45:00	0.005	0.005	0.000	
12/15/2022 15:00:00	0.005	0.004	0.000	
12/15/2022 15:15:00	0.004	0.004	0.000	
12/15/2022 15:30:00	0.004	0.004	0.000	
12/15/2022 15:45:00	0.005	0.004	0.000	
12/15/2022 16:00:00	0.005	0.004	0.000	
12/15/2022 16:15:00	0.005	0.004	0.000	
12/15/2022 16:30:00	0.006	0.004	0.000	
12/15/2022 16:45:00	0.005	0.004	0.000	

Roux Environmental Engineering and Geology, D.P.C.
Community Air Monitoring Program - VOC

Project : Sunset Industrial Park
PM : Levi Curnutte
Location : Brooklyn, New York
Date : 2022-12-15

PM average period: 15 min
VOC averaging period : 15 min

Unit of measurement:
PM : mg/m3
VOC : ppm

	Station #1(AQ 2121) VOC Concentration	Station #2 (AQ 2122) VOC Concentration	VOC Site Contribution	Comments
12/15/2022 07:00:00	0.0	0.0	0.0	
12/15/2022 07:15:00	0.0	0.0	0.0	
12/15/2022 07:30:00	0.0	0.0	0.0	
12/15/2022 07:45:00	0.0	0.0	0.0	
12/15/2022 08:00:00	0.0	0.0	0.0	
12/15/2022 08:15:00	0.0	0.0	0.0	
12/15/2022 08:30:00	0.0	0.0	0.0	
12/15/2022 08:45:00	0.0	0.0	0.0	
12/15/2022 09:00:00	0.0	0.0	0.0	
12/15/2022 09:15:00	0.0	0.0	0.0	
12/15/2022 09:30:00	0.0	0.0	0.0	
12/15/2022 09:45:00	0.0	0.0	0.0	
12/15/2022 10:00:00	0.0	0.0	0.0	
12/15/2022 10:15:00	0.0	0.0	0.0	
12/15/2022 10:30:00	0.0	0.0	0.0	
12/15/2022 10:45:00	0.0	0.0	0.0	
12/15/2022 11:00:00	0.0	0.0	0.0	
12/15/2022 11:15:00	0.0	0.0	0.0	
12/15/2022 11:30:00	0.0	0.0	0.0	
12/15/2022 11:45:00	0.0	0.0	0.0	
12/15/2022 12:00:00	0.0	0.0	0.0	
12/15/2022 12:15:00	0.0	0.0	0.0	
12/15/2022 12:30:00	0.0	0.0	0.0	
12/15/2022 12:45:00	0.0	0.0	0.0	
12/15/2022 13:00:00	0.0	0.0	0.0	
12/15/2022 13:15:00	0.0	0.0	0.0	
12/15/2022 13:30:00	0.0	0.0	0.0	
12/15/2022 13:45:00	0.0	0.0	0.0	
12/15/2022 14:00:00	0.0	0.0	0.0	
12/15/2022 14:15:00	0.0	0.0	0.0	
12/15/2022 14:30:00	0.0	0.0	0.0	
12/15/2022 14:45:00	0.0	0.0	0.0	
12/15/2022 15:00:00	0.0	0.0	0.0	
12/15/2022 15:15:00	0.0	0.0	0.0	
12/15/2022 15:30:00	0.0	0.0	0.0	
12/15/2022 15:45:00	0.0	0.0	0.0	
12/15/2022 16:00:00	0.0	0.0	0.0	
12/15/2022 16:15:00	0.0	0.0	0.0	
12/15/2022 16:30:00	0.0	0.0	0.0	
12/15/2022 16:45:00	0.0	0.0	0.0	

Roux Environmental Engineering and Geology, D.P.C.
Community Air Monitoring Program

Project : Sunset Industrial Park
PM : Levi Curnutte
Location : Brooklyn, New York
Date : 2022-12-15

Wind Direction

