

REMEDIAL ENGINEERING, P.C.
ENVIRONMENTAL ENGINEERS

209 SHAFTER STREET
ISLANDIA, NEW YORK 11749
TEL: 631-232-2600
FAX: 631 232-9898

July 8, 2014

Ms. Ioana Munteanu-Ramnic
Division of Environmental Remediation
New York State Department of Environmental Conservation
47-40 21st Street
Long Island City, New York 11101

Re: Sub-Slab Depressurization System Design
Kent & Wythe Owners LLC
Site Number C224159
149 Kent Avenue, Brooklyn, New York

Dear Ms. Munteanu-Ramnic:

On behalf of Kent & Wythe Owners LLC, 149 Kent Avenue LLC, and The Western Carpet and Linoleum Co. Inc. (collectively, Volunteer), Roux Associates, Inc. and Remedial Engineering, P.C., have prepared the design for sub-slab depressurization system (SSDS) for the property located at 149 Kent Avenue, Brooklyn, New York (Site). The attached United States Geological Survey (USGS) topographical quadrangle map (Figure 1) shows the Site location.

The Volunteer entered into a Brownfield Cleanup Agreement (BCA) with the New York State Department of Environmental Conservation (NYSDEC) in August 2012, to investigate and remediate a 0.92-acre Site under the Brownfield Cleanup Program (BCP). For details regarding Site background, proposed Site use (restricted residential) and the overall preferred remedy for the Site, refer to the Remedial Action Work Plan (RAWP), dated December 7, 2013.

The Remedial Investigation (RI) activities were completed between February and August 2013. The results of the RI were presented in the Remedial Investigation Report (RIR) dated August 5, 2013. Depth to water at the Site has ranged from approximately 9 to 13 feet (ft) below the existing floor slab (bfs) (or from approximately 2.8 to 6.7 foot elevation relative to the Brooklyn Borough Datum) between April and July 2013. The regional groundwater flow direction is southwest. Local groundwater flows generally toward the west-southwest based on water level information collected during the RI. The main constituents of concern for the Site are chlorinated volatile organic compounds (CVOCs), primarily tetrachloroethylene (PCE) and its daughter products in soil, groundwater and soil vapor.

Based on data gathered during the RI, the RAWP, dated December 7, 2013, recommended a preferred remedy for the Site.

The remedy for groundwater includes: Temporary dewatering and water treatment during building construction (to be completed as the building construction progresses); *in situ* zero valent iron (ZVI) injections in the vicinity of MW-4 (completed in February 2014); and permeable reactive barrier (PRB) treatment wall in the southwest corner of the Site (completed in April 2014).

The remedy for soil includes the excavation and offsite disposal of soil exceeding the protection of groundwater Soil Cleanup Objectives (SCOs) for volatile organic compounds (VOCs), which is expected to significantly improve groundwater quality, as described in the RAWP.

The remedy for soil vapor includes the following components:

- Alternative SV1 – Foundation Construction and Waterproofing/Vapor Barrier
- Alternative SV2 – Ventilated Parking Garage
- Alternative SV3 – Active Sub-Slab Depressurization System for Portions of the Building

The rationale for selection and a detailed description of the function of the various components is provided in the RAWP. This design submittal includes:

- Attachment 1 – Additional details for the SSDS, including layout of piping and equipment, materials of construction, and type and model of equipment;
- Attachment 2 – Product literature for the foundation waterproofing system/vapor barrier, which will be comprised of products manufactured by W. R. Grace & Co.

All components of the SSDS and waterproofing system/vapor barrier will be installed in accordance with the manufacturer's recommendations. The Site Management Plan, which will be submitted in accordance with the RAWP, will include details regarding Operation, Maintenance, and Monitoring of the various system components.

SCHEDULE

The actual schedule for installation below grade and above grade portions of the SSDS will depend upon the progress of the building construction. It is currently anticipated that the below grade piping for the SSDS and waterproofing system will be installed late in the fourth quarter of 2014/first quarter of 2015. Building completion and activation of the SSDS is anticipated to occur in late 2015.

Please contact Noelle M. Clarke, P.E., or David Bligh, P.E., by telephone at 631-232-2600 or by email at nclarke@rouxinc.com or dbligh@rouxinc.com if you have any questions or require additional information.

Ms. Ioana Munteanu-Ramnic

July 8, 2014

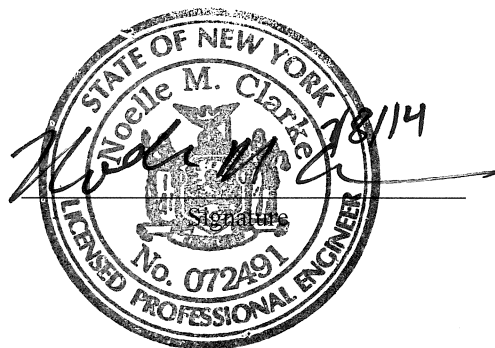
Page 3

CERTIFICATION

I, Noelle M. Clarke, P.E., am currently a registered professional engineer licensed by the State of New York. I certify that this SSDS Design was prepared in accordance with all applicable statutes and regulations and in substantial conformance with the DER Technical Guidance for Site Investigation and Remediation (DER-10) and that all activities will be performed in full accordance with DER-approved work plans and any DER-approved modifications.

Noelle M. Clarke, P.E.
NYS Professional Engineer #072491

July 8, 2014
Date



It is a violation of Article 130 of New York State Education Law for any person to alter this document in any way without the express written verification of adoption by any New York State licensed engineer in accordance with Section 7209(2), Article 130, New York State Education Law.

cc: Albert DeMarco, New York State Department of Health
Tell Metzger, Kent & Wythe Owners LLC
Joseph Duminuco, Roux Associates, Inc.



QUADRANGLE LOCATION



SOURCE:
USGS; 1995, BROOKLYN, NY
7.5 Minute Topographic Quadrangle



Title:

SITE LOCATION MAP

149 KENT AVENUE
BROOKLYN, NEW YORK

Prepared for:

KENT & WYTHE OWNERS LLC

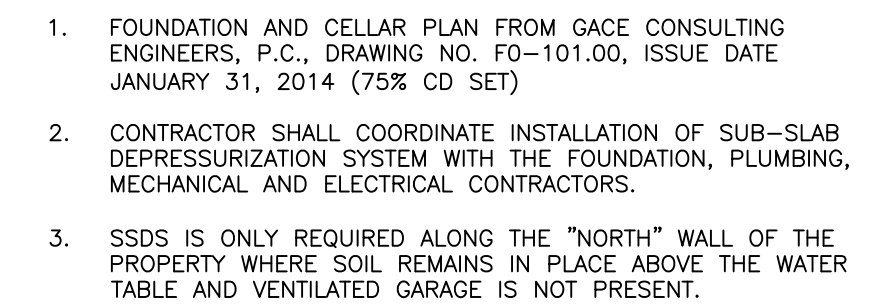
ROUX
ROUX ASSOCIATES, INC.
Environmental Consulting
& Management

Compiled by: D.T.B.	Date: 05MAR14
Prepared by: J.A.D.	Scale: AS SHOWN
Project Mgr.: J.D.	Project No.: 2158.0001Y004
File: 2158.0002Y168.01.CDR	

FIGURE

1

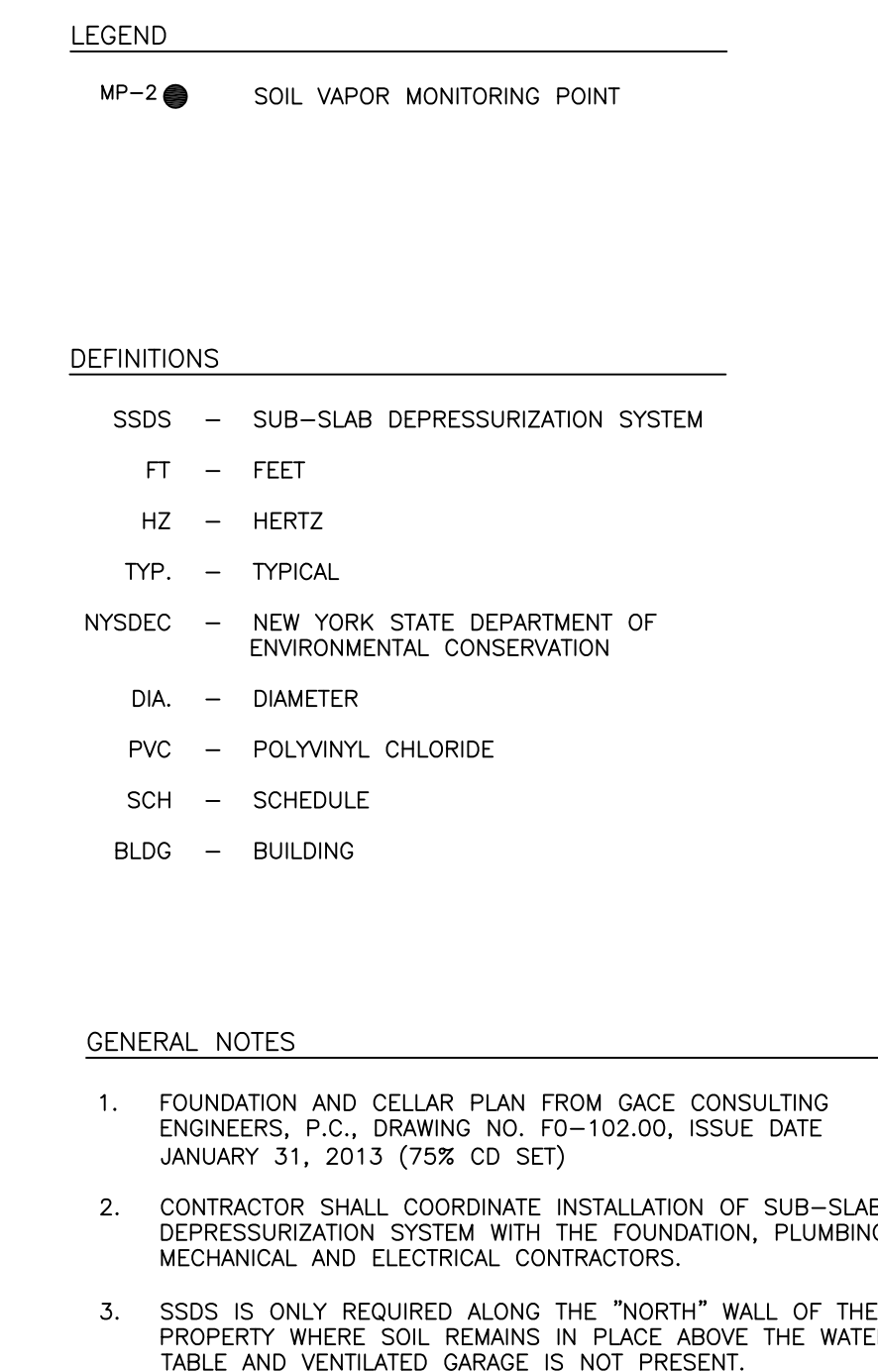
SSDS Design Drawings



(BASED ON DETAIL 2 ON FO-201;
GACE CONSULTING ENGINEERS, P.C.)

1. CONTRACTOR SHALL COORDINATE WITH PLUMBING, MECHANICAL, CIVIL AND ELECTRICAL CONTRACTORS FOR ALL CONFLICTS.
2. THE PERFORATED PIPE MAY BE ROUTED ABOVE OR UNDERNEATH ANY UTILITY LINES (SEWER, WATER, GAS), AS REQUIRED AND AS APPROVED BY THE ENGINEER.
3. THE SURFACES TO BE LINED WITH GEOTEXTILE SHALL BE FREE OF ALL ROCKS, STONES, SAND, OBJECTS OR CONSTRUCTION DEBRIS OF ANY KIND.
4. INSTALL GEOTEXTILE NONWOVEN FABRIC DIRECTLY BELOW MIDSLAB. MATERIAL OVERLAPS SHALL BE A MINIMUM OF 12". THE OVERLAP SEAM SHALL BE WELDED.
5. ALL PENETRATIONS THROUGH THE SLAB ON GRADE (SOG) SEALED USING A SILICONE BASED WATERPROOF SEALANT OR EQUIVALENT.
6. WATERPROOFING SYSTEM TO BE COMPRISED OF GRADE PROTECTORS OR APPROVED EQUIP. FOR DETAILS REGARDING WATERPROOFING SYSTEM, REFER TO ARCHITECTURAL DRAWINGS.
7. NON-STRUCTURAL WALLS AND CONCRETE SLABS WILL BE CONSTRUCTED WHERE SHOWN ON THIS DRAWING TO ENCLOSE THE "VOID" SPACE WHERE THE SOGS IS LOCATED. GRADE PRODUCTS OR APPROVED EQUIP. SHALL BE USED TO WATERPROOF THE NON-STRUCTURAL WALLS AND CONCRETE SLABS.
8. COORDINATE WITH ELECTRICAL CONTRACTOR.
9. ELECTRICAL CONDUIT SHALL BE SIZED FOR 115 VOLT, SINGLE PHASE, 30 AMPS OR HIGHER BLOWER MOTOR.
10. THE BLOWER DISCHARGE SHALL BE LOCATED A MINIMUM OF 15 FEET FROM HVAC AIR INLETS, AND PROPERTY LINE.
11. THE BLOWER SHALL BE A 2HP, AMETEK ROTRON MODEL DROSAS88M OR APPROVED EQUIP.
12. THE BLOWER SHALL BE PROVIDED WITH A WEATHER TIGHT ENCLOSURE (RIP MOLDED PLASTIC) DRYER ENCLOSURE D=100HDS OR APPROVED EQUIP.
13. THE BLOWER SKID SHALL INCLUDE WEATHER TIGHT ENCLOSURE, 7 GALLON AMETEK ROTRON MODEL MS200P KNOCKOUT TANK (WITH VACUUM RELIEF VALVE, GAUGES, AND INTERCONNECTING PIPING/FITTINGS (INCLUDING A MANUAL DILUTION VALVE)).
14. THE BLOWER SKID SHALL BE INSTALLED ON EQUIPMENT CURB (REFER TO ARCHITECTURAL DRAWINGS FOR CURB DETAIL).
15. A VAPOR PHASE TREATMENT UNIT MAY BE REQUIRED. SPACE SHOULD BE AVAILABLE FOR THE VAPOR PHASE TREATMENT - IF REQUIRED, THE VAPOR PHASE TREATMENT UNIT SHALL BE CARBTRON G-2 (24-INCH DIAMETER BY 3 FT TALL) OR APPROVED EQUIP.
16. 3/4" GRAVEL SHALL COME FROM A NYSDOT PERMITS CARB QUARRY AND SHALL CONTAIN LESS THAN 10% BY WEIGHT MATERIAL WHICH WOULD PASS THROUGH A SIZE NO. 10 SIEVE.

SCALE: NOT TO SCALE
(BASED ON DETAIL 2 ON FO-201;
GACE CONSULTING ENGINEERS, P.C.)



1 SUB-SLAB DEPRESSURIZATION SYSTEM
PIPE DETAIL — EAST
SCALE: NOT TO SCALE



**Water Proofing / Vapor Barrier
Information**

Grace Below Grade Waterproofing

PREPRUFE® 300R & 160R

Pre-applied waterproofing membranes that bond integrally to poured concrete for use below slabs or behind basement walls on confined sites

Description

Preprufe® 300R & 160R membranes are unique composite sheets comprising a thick HDPE film, an aggressive pressure sensitive adhesive and a weather resistant protective coating.

Unlike conventional non-adhering membranes, which are vulnerable to water ingress tracking between the unbonded membrane and structure, the unique Preprufe bond to concrete prevents ingress or migration of water around the structure.

The Preprufe R System includes:

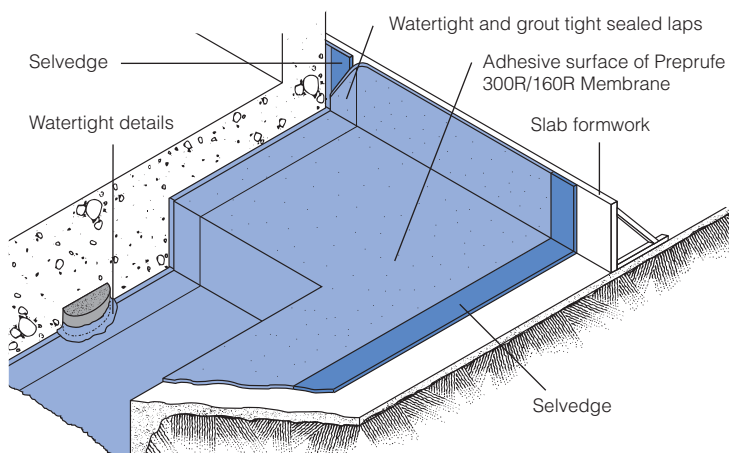
- **Preprufe 300R**—heavy-duty grade for use below slabs and on rafts (i.e. mud slabs). Designed to accept the placing of heavy reinforcement using conventional concrete spacers.
- **Preprufe 160R**—thinner grade for blindside, zero property line applications against soil retention systems.
- **Preprufe Tape LT**—for covering cut edges, roll ends, penetrations and detailing (temperatures between 25°F (-4°C) and 86°F (+30°C)).
- **Preprufe Tape HC**—as above for use in Hot Climates (minimum 50°F (10°C)).
- **Bituthene® Liquid Membrane**—for sealing around penetrations, etc.
- **Adcor™ ES**—waterstop for joints in concrete walls and floors
- **Preprufe Tieback Covers**—preformed cover for soil retention wall tieback heads
- **Preprufe Preformed Corners**—preformed inside and outside corners

Preprufe 300R & 160R membranes are applied either horizontally to smooth prepared concrete, carton forms or well rolled and compacted earth or crushed stone substrate; or vertically to permanent formwork or adjoining structures. Concrete is then cast directly against the adhesive side of the membranes. The specially developed Preprufe adhesive layers work together to form a continuous and integral seal to the structure.

Preprufe can be returned up the inside face of slab formwork but is not recommended for conventional twin-sided formwork on walls, etc. Use Bituthene self-adhesive membrane or Procor® fluid applied membrane to walls after removal of formwork for a fully bonded system to all structural surfaces.

Advantages

- **Forms a unique continuous adhesive bond to concrete poured against it**—prevents water migration and makes it unaffected by ground settlement beneath slabs
- **Fully-adhered watertight laps** and detailing
- **Provides a barrier to water, moisture and gas**—physically isolates the structure from the surrounding ground
- **BBA Certified** for basement Grades 2, 3, & 4 to BS 8102:1990
- **Zero permeance** to moisture
- **Solar reflective**—reduced temperature gain
- **Simple and quick to install**—requiring no priming or fillets
- **Can be applied to permanent formwork**—allows maximum use of confined sites
- **Self protecting**—can be trafficked immediately after application and ready for immediate placing of reinforcement
- **Unaffected by wet conditions**—cannot activate prematurely
- **Inherently waterproof, non-reactive system:**
 - not reliant on confining pressures or hydration
 - unaffected by freeze/thaw, wet/dry cycling
- **Chemical resistant**—effective in most types of soils and waters, protects structure from salt or sulphate attack



Drawings are for illustration purposes only.
Please refer to graceconstruction.com for specific application details.

Installation

The most current application instructions, detail drawings and technical letters can be viewed at graceconstruction.com. For other technical information contact your local Grace representative.

Preprufe 300R & 160R membranes are supplied in rolls 4 ft (1.2 m) wide, with a selvage on one side to provide self-adhered laps for continuity between rolls. The rolls of Preprufe Membrane and Preprufe Tape are interwound with a disposable plastic release liner which must be removed before placing reinforcement and concrete.

Substrate Preparation

All surfaces—It is essential to create a sound and solid substrate to eliminate movement during the concrete pour. Substrates must be regular and smooth with no gaps or voids greater than 0.5 in. (12 mm). Grout around all penetrations such as utility conduits, etc. for stability (see Figure 1).

Horizontal—The substrate must be free of loose aggregate and sharp protrusions. Avoid curved or rounded substrates. When installing over earth or crushed stone, ensure substrate is well compacted to avoid displacement of substrate due to traffic or concrete pour. The surface does not need to be dry, but standing water must be removed.

Vertical—Use concrete, plywood, insulation or other approved facing to sheet piling to provide support to the membrane. Board systems such as timber lagging must be close butted to provide support and not more than 0.5 in. (12 mm) out of alignment.

Membrane Installation

Preprufe can be applied at temperatures of 25°F (-4°C) or above. When installing Preprufe in cold or marginal weather conditions 55°F (<13°C) the use of Preprufe Tape LT is recommended at all laps and detailing. Preprufe Tape LT should be applied to clean, dry surfaces and the release liner must be removed immediately after application. Alternatively, Preprufe Low Temperature (LT) is available for low temperature condition applications. Refer to Preprufe LT data sheet for more information.

Horizontal substrates—Place the membrane HDPE film side to the substrate with the clear plastic release liner facing towards the concrete pour. End laps should be staggered to avoid a build up of layers. Leave plastic release liner in position until overlap procedure is completed (see Figure 2).

Accurately position succeeding sheets to overlap the previous sheet 3 in. (75 mm) along the marked selvage. Ensure the underside of the succeeding sheet is clean, dry and free from contamination before attempting to overlap. Peel back the plastic release liner from between the overlaps as the two layers are bonded together. Ensure a continuous bond is achieved without creases and roll firmly with a heavy roller. Completely remove the plastic liner to expose the protective coating. Any initial tack will quickly disappear.

Refer to Grace Tech Letter 15 for information on suitable rebar chairs for Preprufe.

Vertical substrates—Mechanically fasten the membrane vertically using fasteners appropriate to the substrate with the clear plastic release liner facing towards the concrete pour. The membrane may be installed in any convenient length. Fastening can be made through the selvage using a small and low profile head fastener so that the membrane lays flat and allows firmly rolled overlaps. Immediately remove the plastic release liner.

Ensure the underside of the succeeding sheet is clean, dry and free from contamination before attempting to

overlap. Roll firmly to ensure a watertight seal.

Roll ends and cut edges—Overlap all roll ends and cut edges by a minimum 3 in. (75 mm) and ensure the area is clean and free from contamination, wiping with a damp cloth if necessary. Allow to dry and apply Preprufe Tape LT (or HC in hot climates) centered over the lap edges and roll firmly (see Figure 3). Immediately remove printed plastic release liner from the tape.

Details

Refer to Preprufe Field Application Manual, Section V Application Instructions or visit graceconstruction.com. This manual gives comprehensive guidance and standard details.

Membrane Repair

Inspect the membrane before installation of reinforcement steel, formwork and final placement of concrete. The membrane can be easily cleaned by power washing if required. Repair damage by wiping the area with a damp cloth to ensure the area is clean and free from dust, and allow to dry. Repair small punctures (0.5 in. (12 mm) or less) and slices by applying Preprufe Tape centered over the damaged area and roll firmly. Remove the release liner from the tape. Repair holes and large punctures by applying a patch of Preprufe membrane, which extends 6 in. (150 mm) beyond the damaged area. Seal all edges of the patch with Preprufe Tape. Remove the release liner from the tape and roll firmly. Any areas of damaged adhesive should be covered with Preprufe Tape. Remove printed plastic release liner from tape. Where exposed selvage has lost adhesion or laps have not been sealed, ensure the area is clean and dry and cover with fresh Preprufe Tape, rolling firmly. Alternatively, use a hot air gun or similar to activate adhesive and firmly roll lap to achieve continuity.

Pouring of Concrete

Ensure the plastic release liner is removed from all areas of Preprufe membrane and tape.

It is recommended that concrete be poured within 56 days (42 days in hot climates) of application of the membrane. Following proper ACI guidelines, concrete must be placed carefully and consolidated properly to avoid damage to the membrane. Never use a sharp object to consolidate the concrete.

Removal of Formwork

Preprufe membranes can be applied to removable formwork, such as slab perimeters, elevator and lift pits, etc. Once the concrete is poured the formwork must remain in place until the concrete has gained sufficient compressive strength to develop the surface bond. Preprufe membranes are not recommended for conventional twin-sided wall forming systems.

A minimum concrete compressive strength of 1500 psi (10 N/mm²) is recommended prior to stripping formwork supporting Preprufe membranes. Premature stripping may result in displacement of the membrane and/or spalling of the concrete.

Refer to Grace Tech Letter 17 for information on removal of formwork for Preprufe.

Figure 1

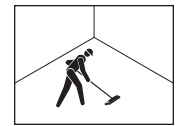


Figure 2

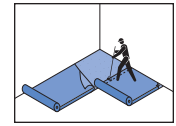
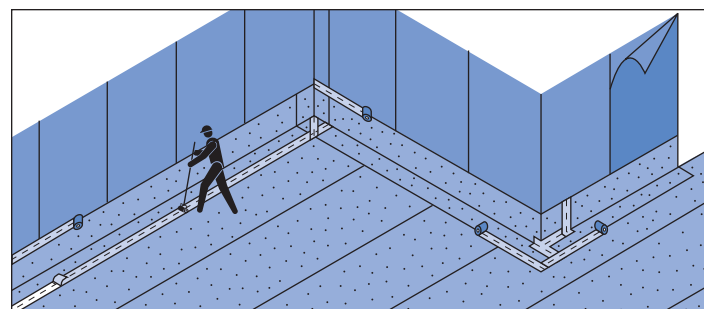
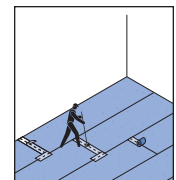


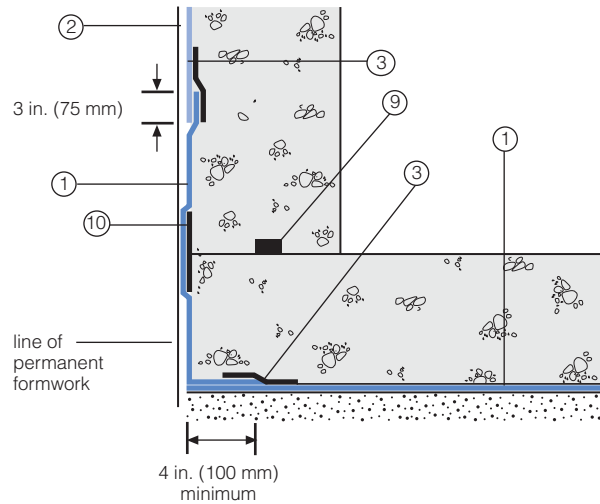
Figure 3



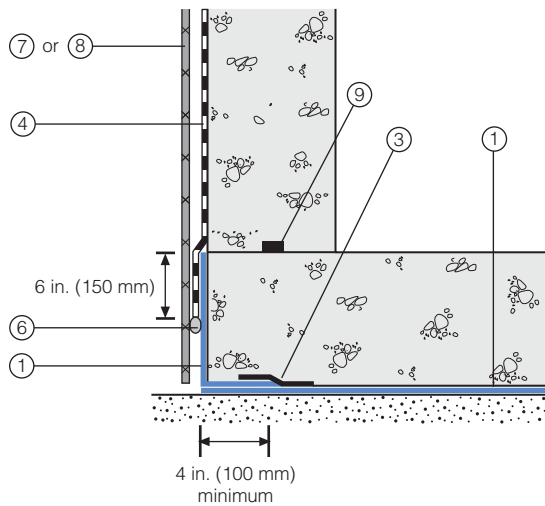
Detail Drawings

Details shown are typical illustrations and not working details. For a list of the most current details, visit us at graceconstruction.com. For technical assistance with detailing and problem solving please call toll free at 866-333-3SBM (3726).

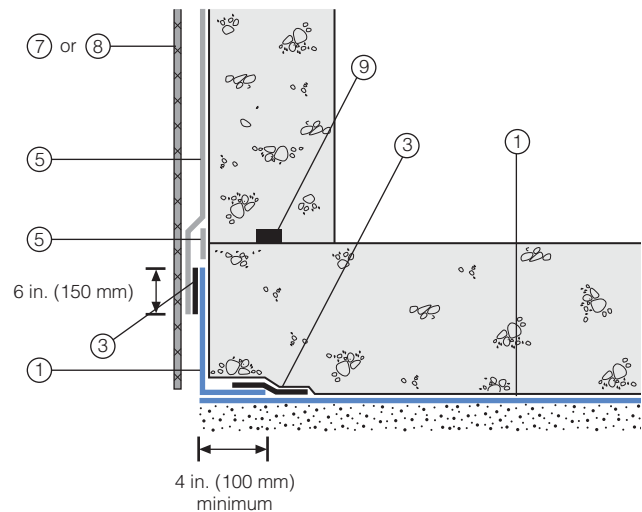
Wall base detail against permanent shutter



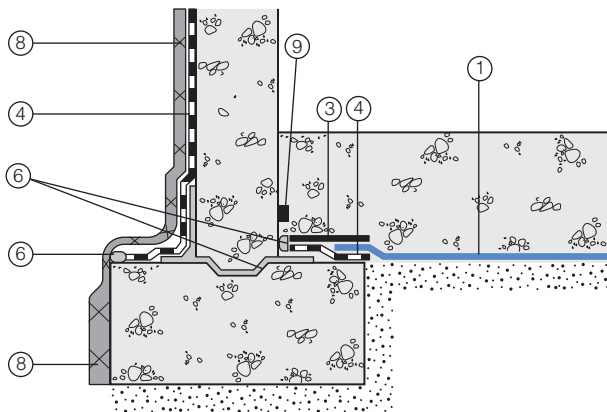
Bituthene wall base detail (Option 1)



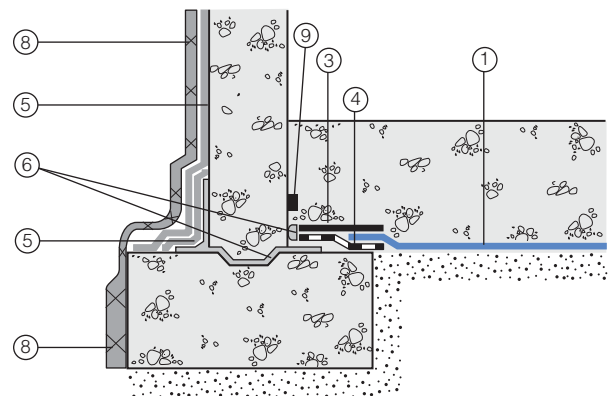
Procor wall base detail (Option 1)



Bituthene wall base detail (Option 2)



Procor wall base detail (Option 2)



- 1 Preprufe 300R
- 2 Preprufe 160R
- 3 Preprufe Tape
- 4 Bituthene

- 5 Procor
- 6 Bituthene Liquid Membrane
- 7 Protection

- 8 Hydroduct®
- 9 Adcor ES
- 10 Preprufe CJ Tape

Supply

Dimensions (Nominal)	Preprufe 300R Membrane	Preprufe 160R Membrane	Preprufe Tape (LT or HC*)
Thickness	0.046 in. (1.2 mm)	0.032 in. (0.8 mm)	
Roll size	4 ft x 98 ft (1.2 m x 30 m)	4 ft x 115 ft (1.2 m x 35 m)	4 in. x 49 ft (100 mm x 15 m)
Roll area	392 ft ² (36 m ²)	460 ft ² (42 m ²)	
Roll weight	108 lbs (50 kg)	92 lbs (42 kg)	4.3 lbs (2 kg)
Minimum side/end laps	3 in. (75 mm)	3 in. (75 mm)	3 in. (75 mm)
* LT denotes Low Temperature (between 25°F (-4°C) and 86°F (+30°C)) HC denotes Hot Climate (50°F (>+10°C))			
Ancillary Products			
Bituthene Liquid Membrane—1.5 US gal (5.7 liter) or 4 US gal (15.1 liter)			

Physical Properties

Property	Typical Value 300R	Typical Value 160R	Test Method
Color	white	white	
Thickness	0.046 in. (1.2 mm)	0.032 in. (0.8 mm)	ASTM D3767
Lateral Water Migration Resistance	Pass at 231 ft (71 m) of hydrostatic head pressure	Pass at 231 ft (71 m) of hydrostatic head pressure	ASTM D5385, modified ¹
Low temperature flexibility	Unaffected at -20°F (-29°C)	Unaffected at -20°F (-29°C)	ASTM D1970
Resistance to hydrostatic head	231 ft (71 m)	231 ft (71 m)	ASTM D5385, modified ²
Elongation	500%	500%	ASTM D412, modified ³
Tensile strength, film	4000 psi (27.6 MPa)	4000 psi (27.6 MPa)	ASTM D412
Crack cycling at -9.4°F (-23°C), 100 cycles	Unaffected, Pass	Unaffected, Pass	ASTM C836
Puncture resistance	221 lbs (990 N)	100 lbs (445 N)	ASTM E154
Peel adhesion to concrete	5 lbs/in. (880 N/m)	5 lbs/in. (880 N/m)	ASTM D903, modified ⁴
Lap peel adhesion	5 lbs/in. (880 N/m)	5 lbs/in. (880 N/m)	ASTM D1876, modified ⁵
Permeance to water vapor transmission	0.01 perms (0.6 ng/(Pa × s × m ²))	0.01 perms (0.6 ng/(Pa × s × m ²))	ASTM E96, method B
Water absorption	0.5%	0.5%	ASTM D570

Footnotes:

1. Lateral water migration resistance is tested by casting concrete against membrane with a hole and subjecting the membrane to hydrostatic head pressure with water. The test measures the resistance of lateral water migration between the concrete and the membrane.
2. Hydrostatic head tests of Preprufe Membranes are performed by casting concrete against the membrane with a lap. Before the concrete cures, a 0.125 in. (3 mm) spacer is inserted perpendicular to the membrane to create a gap. The cured block is placed in a chamber where water is introduced to the membrane surface up to the head indicated.
3. Elongation of membrane is run at a rate of 2 in. (50 mm) per minute.
4. Concrete is cast against the protective coating surface of the membrane and allowed to properly dry (7 days minimum). Peel adhesion of membrane to concrete is measured at a rate of 2 in. (50 mm) per minute at room temperature.
5. The test is conducted 15 minutes after the lap is formed (per Grace published recommendations) and run at a rate of 2 in. (50 mm) per minute.

Specification Clauses

Preprufe 300R or 160R shall be applied with its adhesive face presented to receive fresh concrete to which it will integrally bond. Only Grace Construction Products approved membranes shall be bonded to Preprufe 300R/160R. All Preprufe 300R/160R system materials shall be supplied by Grace Construction Products, and applied strictly in accordance with their instructions. Specimen performance and formatted clauses are also available.

NOTE: Use Preprufe Tape to tie-in Procor with Preprufe.

Health and Safety

Refer to relevant Material Safety data sheet. Complete rolls should be handled by a minimum of two persons.

www.graceconstruction.com

For technical assistance call toll free at 866-333-3SBM (3726)

Adcor is a trademark and Preprufe, Bituthene and Hydroduct are registered trademarks of W. R. Grace & Co.—Conn. Procor is a U.S. registered trademark of W. R. Grace & Co.—Conn., and is used in Canada under license from PROCOR LIMITED.

We hope the information here will be helpful. It is based on data and knowledge considered to be true and accurate and is offered for the users' consideration, investigation and verification, but we do not warrant the results to be obtained. Please read all statements, recommendations or suggestions in conjunction with our conditions of sale, which apply to all goods supplied by us. No statement, recommendation or suggestion is intended for any use which would infringe any patent or copyright. W. R. Grace & Co.—Conn., 62 Whittemore Avenue, Cambridge, MA 02140. In Canada, Grace Canada, Inc., 294 Clements Road, West, Ajax, Ontario, Canada L1S 3C6.

This product may be covered by patents or patents pending.
PF-111H Printed in U.S.A. 07/12

Copyright 2012. W. R. Grace & Co.—Conn.
FA/PDF

GRACE

Grace Below Grade Waterproofing

BITUTHENE® SYSTEM 4000

Self-adhesive HDPE waterproofing membrane with super tacky compound for use with patented, water-based System 4000 Surface Conditioner

Description

Bituthene® System 4000 is a 1.5 mm (1/16 in.) flexible, pre-formed waterproof membrane which combines a high performance, cross laminated, HDPE carrier film with a unique, super tacky, self-adhesive rubberized asphalt compound.

System 4000 Surface Conditioner is a unique, water-based, latex surface treatment which imparts an aggressive, high tack finish to the treated substrate. It is specifically formulated to bind site dust and concrete efflorescence, thereby providing a suitable surface for the Bituthene System 4000 Waterproofing Membrane.

Conveniently packaged in each roll of membrane, System 4000 Surface Conditioner promotes good initial adhesion and, more importantly, excellent permanent adhesion of the Bituthene System 4000 Waterproofing Membrane. The VOC (Volatile Organic Compound) content of this product is 100 g/L.

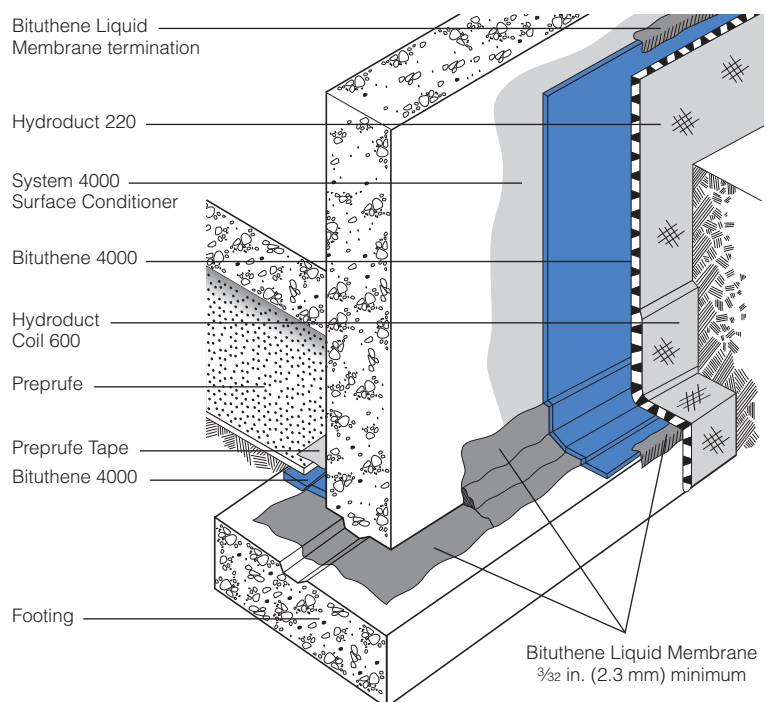
Product Advantages

- Excellent adhesion
- Cold applied
- Reduced inventory and handling costs
- Wide application temperature range
- Overlap security
- Cross laminated, high density polyethylene carrier film
- Flexible
- Ripcord

Architectural and Industrial Maintenance Regulations limit the VOC content in products classified as Architectural Coatings. Refer to Technical Letters at graceconstruction.com for most current list of allowable limits.

Advantages

- **Excellent adhesion**—special adhesive compound engineered to work with high tack System 4000 Surface Conditioner
- **Cold applied**—simple application to substrates, especially at low temperatures
- **Reduced inventory and handling costs**—System 4000 Surface Conditioner is included with each roll of membrane
- **Wide application temperature range**—excellent bond to self and substrate from 25°F (-4°C) and above



Drawings are for illustration purposes only. Please refer to graceconstruction.com for specific application details.

- **Overlap security**—minimizes margin for error under site conditions
- **Cross laminated, high density polyethylene carrier film**—provides high tear strength, puncture and impact resistance
- **Flexible**—accommodates minor structural movements and will bridge shrinkage cracks
- **Ripcord®**—this split release on demand feature allows the splitting of the release paper into two (2) pieces for ease of installation in detailed areas

Use

Bituthene is ideal for waterproofing concrete, masonry and wood surfaces where in-service temperatures will not exceed 135°F (57°C). It can be applied to foundation walls, tunnels, earth sheltered structures and split slab construction, both above and below grade. (For above grade applications, see *Above Grade Waterproofing Bituthene System 4000*.)

Bituthene is 1/16 in. (1.5 mm) thick, 3 ft (0.9 m) wide and 66.7 ft (20 m) long and is supplied in rolls. It is unrolled sticky side down onto concrete slabs or applied onto vertical concrete faces primed with System 4000 Surface Conditioner. Continuity is achieved by overlapping a minimum 2 in. (50 mm) and firmly rolling the joint.

Bituthene is extremely flexible. It is capable of bridging shrinkage cracks in the concrete and will accommodate minor differential movement throughout the service life of the structure.

Application Procedures

Safety, Storage and Handling Information

Bituthene products must be handled properly. Vapors from solvent-based primers and mastic are harmful and flammable. For these products, the best available information on safe handling, storage, personal protection, health and environmental considerations has been gathered. Material Safety Data Sheets (MSDS) are available at graceconstruction.com and users should acquaint themselves with this information. Carefully read detailed precaution statements on product labels and the MSDS before use.

Surface Preparation

Surfaces should be structurally sound and free of voids, spalled areas, loose aggregate and sharp protrusions. Remove contaminants such as grease, oil and wax from exposed surfaces. Remove dust, dirt, loose stone and debris. Concrete must be properly dried (minimum 7 days for normal structural concrete and 14 days for lightweight structural concrete).

If time is critical, Bituthene Primer B2 or Bituthene Primer B2 LVC may be used to allow priming and installation of membrane on damp surfaces or green concrete. Priming may begin in this case as soon as the concrete will maintain structural integrity. Use form release agents which will not transfer to the concrete. Remove forms as soon as possible from below horizontal slabs to prevent entrapment of excess moisture. Excess moisture may lead to blistering of the membrane. Cure concrete with clear, resin-based curing compounds which do not contain oil, wax or pigment. Except with Bituthene Primer B2 or Bituthene Primer B2 LVC, allow concrete to thoroughly dry following rain. Do not apply any products to frozen concrete.

Repair defects such as spalled or poorly consolidated areas. Remove sharp protrusions and form match lines. On masonry surfaces, apply a parge coat to rough concrete block and brick walls or trowel cut mortar joints flush to the face of the concrete blocks.

Temperature

- Apply Bituthene System 4000 Membrane and Conditioner only in dry weather and when air and surface temperatures are 25°F (-4°C) or above.
- Apply Bituthene Primer B2 or Bituthene Primer B2 LVC in dry weather above 25°F (-4°C). (See separate product information sheet.)

Conditioning

Bituthene System 4000 Surface Conditioner is ready to use and can be applied by spray or roller. For best results, use a pump-type air sprayer with fan tip nozzle, like the Bituthene System 4000 Surface Conditioner Sprayer, to apply the surface conditioner.

Apply Bituthene System 4000 Surface Conditioner to clean, dry, frost-free surfaces at a coverage rate of 300 ft²/gal (7.4 m²/L). Coverage should be uniform. Surface conditioner should not be applied so heavily that it puddles or runs. **Do not apply conditioner to Bituthene membrane.**

Allow Bituthene System 4000 Surface Conditioner to dry one hour or until substrate returns to its original color. At low temperatures or in high humidity conditions, dry time may be longer.

Bituthene System 4000 Surface Conditioner is clear when dry and may be slightly tacky. In general, conditioning should be limited to what can be covered within 24 hours. In situations where long dry times may prevail, substrates may be conditioned in advance. Substrates should be reconditioned if significant dirt or dust accumulates.

Before surface conditioner dries, tools should be cleaned with water. After surface conditioner dries, tools should be cleaned with mineral spirits. Mineral spirits is a combustible liquid which should be used only in accordance with manufacturer's recommendations. **Do not use solvents to clean hands or skin.**

Corner Details

The treatment of corners varies depending on the location of the corner. For detailed information on Bituthene Liquid Membrane, see separate product information sheet.

- At wall to footing inside corners—
Option 1: Apply membrane to within 1 in. (25 mm) of base of wall. Treat the inside corner by installing a ¾ in. (20 mm) fillet of Bituthene Liquid Membrane. Extend Bituthene Liquid Membrane at least 2½ in. (65 mm) onto footing, and 2½ in. (65 mm) onto wall membrane.
Option 2: Treat the inside corner by installing a ¾ in. (20 mm) fillet of Bituthene Liquid Membrane. Apply 12 in. (300 mm) wide strip of sheet membrane centered over fillet. Apply wall membrane over inside corner and extend 6 in. (150 mm) onto footing. Apply 1 in. (25 mm) wide troweling of Bituthene Liquid Membrane over all terminations and seams within 12 in. (300 mm) of corner.

- At footings where the elevation of the floor slab is 6 in. (150 mm) or more above the footing, treat the inside corner either by the above two methods or terminate the membrane at the base of the wall. Seal the termination with Bituthene Liquid Membrane.

Joints

Properly seal all joints with waterstop, joint filler and sealant as required. Bituthene membranes are not intended to function as the primary joint seal. Allow sealants to fully cure. Pre-strip all slab and wall cracks over ¼ in. (1.5 mm) wide and all construction and control joints with 9 in. (230 mm) wide sheet membrane strip.

Application on Horizontal Surfaces

(Note: Preprufe® pre-applied membranes are strongly recommended for below slab or for any application where the membrane is applied before concreting. See Preprufe product information sheets.)

Apply membrane from the low point to the high point so that laps shed water. Overlap all seams at least 2 in. (50 mm). Stagger all end laps. Roll the entire membrane firmly and completely as soon as possible. Use a linoleum roller or standard water-filled garden roller less than 30 in. (760 mm) wide, weighing a minimum of 75 lbs (34 kg) when filled. Cover the face of the roller with a resilient material such as a ½ in. (13 mm) plastic foam or two wraps of indoor-outdoor carpet to allow the membrane to fully contact the primed substrate. Seal all T-joints and membrane terminations with Bituthene Liquid Membrane at the end of the day.

Protrusions and Drains

Apply membrane to within 1 in. (25 mm) of the base of the protrusion. Apply Bituthene Liquid Membrane 0.1 in. (2.5 mm) thick around protrusion. Bituthene Liquid Membrane should extend over the membrane a minimum of 2½ in. (65 mm) and up the penetration to just below the finished height of the wearing course.

Vertical Surfaces

Apply membrane in lengths up to 8 ft (2.5 m). Overlap all seams at least 2 in. (50 mm). On higher walls apply membrane in two or more sections with the upper overlapping the lower by at least 2 in. (50 mm). Roll all membrane with a hand roller.

Terminate the membrane at grade level. Press the membrane firmly to the wall with the butt end of a hardwood tool such as a hammer handle or secure into a reglet. Failure to use heavy pressure at terminations can result in a poor seal. A termination bar may be used to ensure a tight seal. Terminate the membrane at the base of the wall if the bottom of the interior floor slab is at least 6 in. (150 mm) above the footing. Otherwise, use appropriate inside corner detail where the wall and footing meet.

Membrane Repairs

Patch tears and inadequately lapped seams with membrane. Clean membrane with a damp cloth and dry. Slit fishmouths and repair with a patch extending 6 in. (150 mm) in all directions from the slit and seal edges of the patch with Bituthene Liquid Membrane. Inspect the membrane thoroughly before covering and make any repairs.

Drainage

Hydroduct® drainage composites are recommended for both active drainage and protection of the membrane. See Hydroduct product information sheets.

Protection of Membrane

Protect Bituthene membranes to avoid damage from other trades, construction materials or backfill. Place protection immediately in temperatures above 77°F (25°C) to avoid potential for blisters.

- On vertical applications, use Hydroduct 220 Drainage Composite. Adhere Hydroduct 220 Drainage Composite to membrane with Preprufe Detail Tape. Alternative methods of protection are to use 1 in. (25 mm) expanded polystyrene or ¼ in. (6 mm) extruded polystyrene that has a minimum compressive strength of 8 lbs/in.² (55 kN/m²). Such alternatives do not provide

System 4000 Surface Conditioner Sprayer

The Bituthene System 4000 Surface Conditioner Sprayer is a professional grade, polyethylene, pump-type, compressed air sprayer with a brass fan tip nozzle. It has a 2 gal (7.6 L) capacity. The nozzle orifice and spray pattern have been specifically engineered for the optimum application of Bituthene System 4000 Surface Conditioner.

Hold nozzle 18 in. (450 mm) from substrate and squeeze handle to spray. Spray in a sweeping motion until substrate is uniformly covered.

Sprayer should be repressurized by pumping as needed. For best results, sprayer should be maintained at high pressure during spraying.

To release pressure, invert the sprayer and spray until all compressed air is released.



Maintenance

The Bituthene System 4000 Surface Conditioner Sprayer should perform without trouble for an extended period if maintained properly.

Sprayer should not be used to store Bituthene System 4000 Surface Conditioner. The sprayer should be flushed with clean water immediately after spraying. For breaks in the spray operation of one hour or less, invert the sprayer and squeeze the spray handle until only air comes from the nozzle. This will avoid clogging.

Should the sprayer need repairs or parts, call the maintenance telephone number on the sprayer tank (800-323-0620).

positive drainage to the system. If ¼ in. (6 mm) extruded polystyrene protection board is used, backfill should not contain sharp rock or aggregate over 2 in. (50 mm) in diameter. Adhere polystyrene protection board with Preprufe Detail Tape.

- In mud slab waterproofing, or other applications where positive drainage is not desired and where reinforced concrete slabs are placed over the membrane, the use of ¼ in. (6 mm) hardboard or 2 layers of ⅛ in. (3 mm) hardboard is recommended.

Insulation

Always apply Bituthene membrane directly to primed or conditioned structural substrates. Insulation, if used, must be applied over the membrane. Do not apply Bituthene membranes over lightweight insulating concrete.

Backfill

Place backfill as soon as possible. Use care during backfill operation to avoid damage to the waterproofing system. Follow generally accepted practices for backfilling and compaction. Backfill should be added and compacted in 6 in. (150 mm) to 12 in. (300 mm) lifts.

For areas which cannot be fully compacted, a termination bar is recommended across the top termination of the membrane.

Placing Steel

When placing steel over properly protected membrane, use concrete bar supports (dobies) or chairs with plastic tips or rolled feet to prevent damage from sharp edges. Use special care when using wire mesh, especially if the mesh is curled.

Approvals

- City of Los Angeles Research Report RR 24386
- Miami-Dade County Code Report NOA 04-0114.03
- U.S. Department of Housing and Urban Development (HUD) HUD Materials Release 628E
- Bituthene 4000 Membranes carry a Underwriters' Laboratory Class A Fire Rating (Building Materials Directory, File #R7910) when used in either of the following constructions:
 - Limited to noncombustible decks at inclines not exceeding ¼ in. (6 mm) to the horizontal 1 ft (0.3 m). One layer of Bituthene waterproofing membrane, followed by one layer of ⅛ in. (3 mm) protection board, encased in 2 in. (50 mm) minimum concrete monolithic pour.
 - Limited to noncombustible decks at inclines not exceeding ¼ in. (6 mm) to the horizontal 1 ft (0.3 m). One layer of Bituthene waterproofing membrane, followed by one layer of DOW Styro-foam PD Insulation Board [2 in. (50 mm) thick]. This is covered with one layer of 2 ft x 2 ft x 2 in. (0.6 m x 0.6 m x 50 mm) of concrete paver topping.

Warranty

Five year material warranties covering Bituthene and Hydroduct products are available upon request. Contact your Grace sales representative for details.

Technical Services

Support is provided by full time, technically trained Grace representatives and technical service personnel, backed by a central research and development staff.

Supply

Bituthene System 4000	3 ft x 66.7 ft roll (200 ft ²) [0.9 m x 20 m (18.6 m ²)]
Roll weight	83 lbs (38 kg) gross
Palletization	25 rolls per pallet
Storage	Store upright in dry conditions below 95°F (+35°C).
System 4000 Surface Conditioner	1 x 0.625 gal (2.3 L) bottle in each roll of System 4000 Membrane
Ancillary Products	
Surface Conditioner Sprayer	2 gal (7.6 L) capacity professional grade sprayer with specially engineered nozzle
Bituthene Liquid Membrane	1.5 gal (5.7 L) pail/125 pails per pallet or 4 gal (15.1 L) pail/48 pails per pallet
Preprufe Detail Tape	2 in. x 50 ft (50 mm x 15 m) roll/16 rolls per carton
Bituthene Mastic	Twelve 30 oz (0.9 L) tubes/carton or 5 gal (18.9 L) pail/36 pails per pallet
Complementary Material	
Hydroduct	See separate data sheets

Equipment by others:

Soft broom, utility knife, brush or roller for priming

Physical Properties for Bituthene 4000 Membrane

Property	Typical Value	Test Method
Color	Dark gray-black	
Thickness	1/16 in. (1.5 mm) nominal	ASTM D3767—method A
Flexibility, 180° bend over 1 in. (25 mm) mandrel at -25°F (-32°C)	Unaffected	ASTM D1970
Tensile strength, membrane, die C	325 lbs/in. ² (2240 kPa) minimum	ASTM D412 modified ¹
Tensile strength, film	5,000 lbs/in. ² (34.5 MPa) minimum	ASTM D882 modified ¹
Elongation, ultimate failure of rubberized asphalt	300% minimum	ASTM D412 modified ¹
Crack cycling at -25°F (-32°C), 100 cycles	Unaffected	ASTM C836
Lap adhesion at minimum application temperature	5 lbs/in. (880 N/m)	ASTM D1876 modified ²
Peel strength	9 lbs/in. (1576 N/m)	ASTM D903 modified ³
Puncture resistance, membrane	50 lbs (222 N) minimum	ASTM E154
Resistance to hydrostatic head	210 ft (70 m) of water	ASTM D5385
Permeance	0.05 perms (2.9 ng/m ² sPa) maximum	ASTM E96, section 12—water method
Water absorption	0.1% maximum	ASTM D570

Footnotes:

1. The test is run at a rate of 2 in. (50 mm) per minute.
2. The test is conducted 15 minutes after the lap is formed and run at a rate of 2 in. (50 mm) per minute at 40°F (5°C).
3. The 180° peel strength is run at a rate of 12 in. (300 mm) per minute.

Physical Properties for System 4000 Surface Conditioner

Property	Typical Value
Solvent type	Water
Flash point	>140°F (>60°C)
VOC* content	91 g/L
Application temperature	25°F (-4°C) and above
Freeze thaw stability	5 cycles (minimum)
Freezing point (as packaged)	14°F (-10°C)
Dry time (hours)	1 hour**

* Volatile Organic Compound

** Dry time will vary with weather conditions

www.graceconstruction.com

For technical assistance call toll free at 866-333-3SBM (3726)

Bituthene, Preprufe, Hydroduct and Ripcord are registered trademarks of W. R. Grace & Co.—Conn.

We hope the information here will be helpful. It is based on data and knowledge considered to be true and accurate and is offered for the users' consideration, investigation and verification, but we do not warrant the results to be obtained. Please read all statements, recommendations or suggestions in conjunction with our conditions of sale, which apply to all goods supplied by us. No statement, recommendation or suggestion is intended for any use which would infringe any patent or copyright. W. R. Grace & Co.—Conn., 62 Whittemore Avenue, Cambridge, MA 02140. In Canada, Grace Canada, Inc., 294 Clements Road, West, Ajax, Ontario, Canada L1S 3C6.

This product may be covered by patents or patents pending.
BIT-220H Printed in U.S.A. 10/13

Copyright 20013 W. R. Grace & Co.—Conn.
FA/PDF

GRACE