

## DAILY STATUS REPORT

Prepared By: Siena-Marie Thomsen

WEATHER	Snow	x	Rain		Overcast	x	Partly Cloudy	x	Bright Sun	
TEMP.	< 32	x	32-50		50-70		70-85		>85	

VCP Project No.:	N/A	E-Number Project No.:	C224177	Date:	1/28/2026
Project Name:	Former Cleaner Sales & Equipment Corp. Site				

Consultant: Rock Enviro	Safety Officer: Jason Gellati
General Contractor: 135 Kent LLC	Site Manager/ Supervisor: Paul Banaszek
Work Activities Performed (Since Last Report): <ul style="list-style-type: none"><li>Enclosures built for dust control and sound proofing measures prior to concrete removal.</li></ul>	
Working In Grid: A	
Samples Collected (Since Last Report): N/A	
Air Monitoring (Since Last Report): NSD – no soil disturbance  Prestart Conditions – PID = 0.0 ppm, Dust = 0.027 ug/m3 High Conditions – PID = 0.0 ppm, Dust = 0.036 ug/m3	
Problems Encountered: No problems encountered	
Planned Activities for the Next Day/ Week: <ul style="list-style-type: none"><li>Continuation of air monitoring and oversight.</li><li>Continued site preparation for upcoming trench work</li><li>Slab cutting will commence on 1/30/2026</li><li>Dust control measure implemented, as needed</li><li>Next drum pickup scheduled for Tuesday 2/3 due to the delay in project start.</li></ul>	

**Figure 1 - Work Area & CAMP Stations (Ground Floor)**

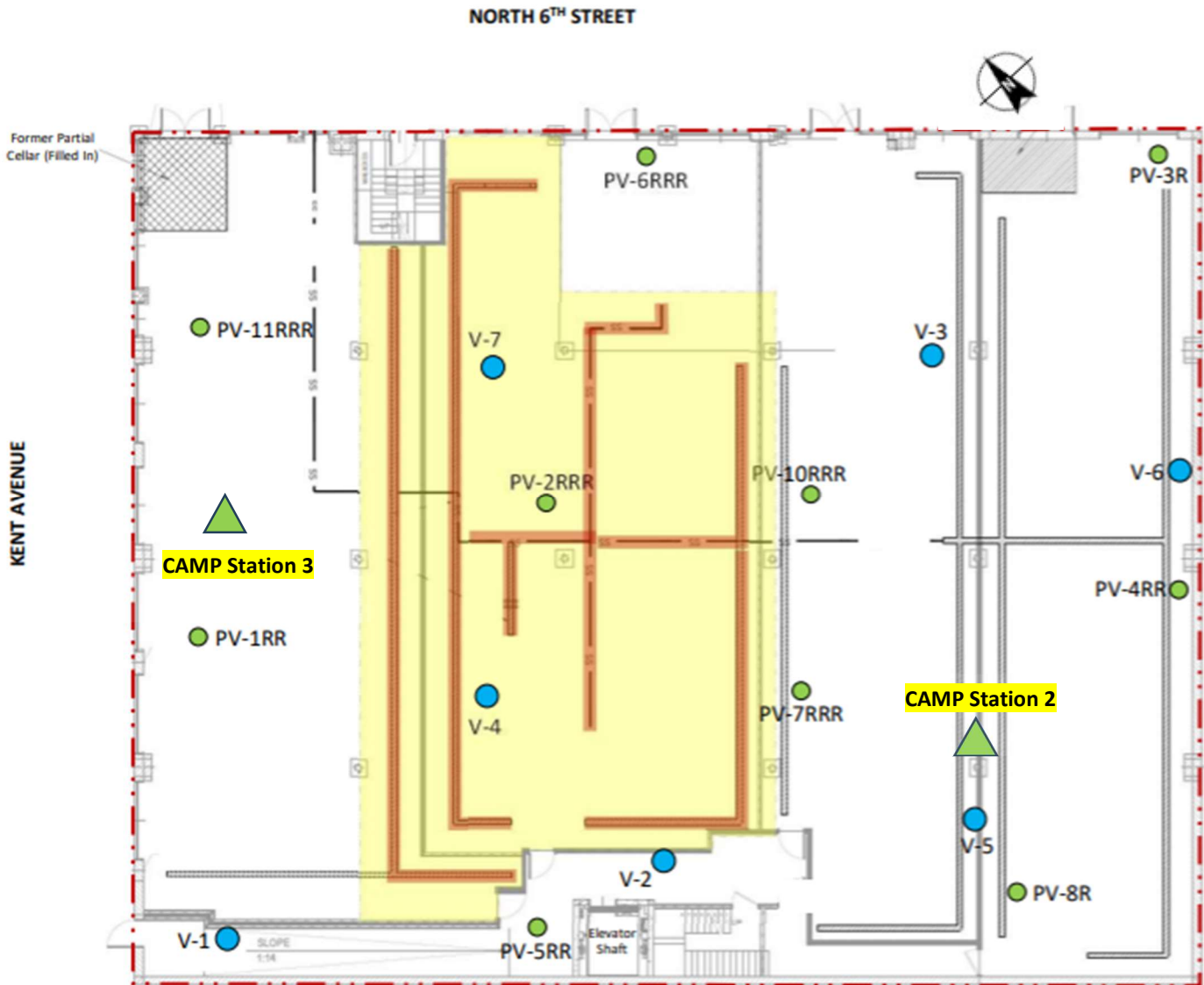
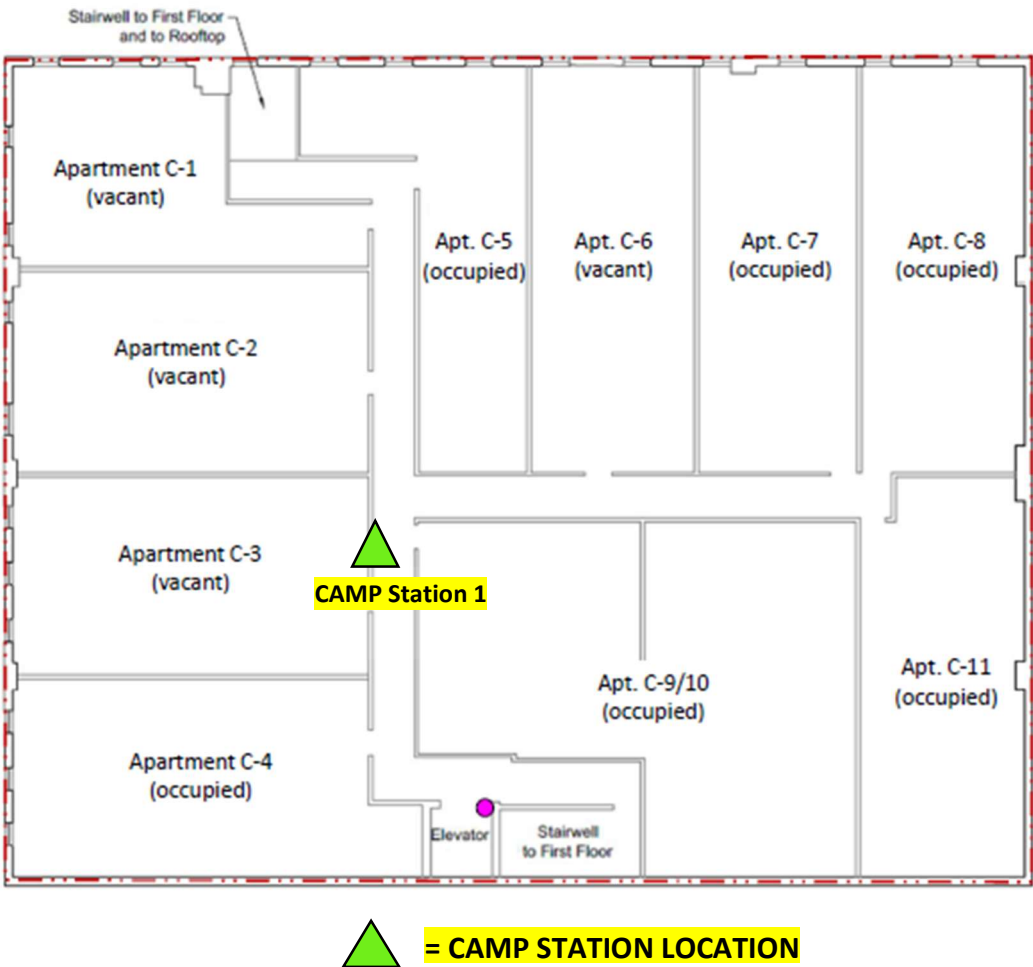


Figure 2 – CAMP Station Locations (Second Floor)



## Photo Log

Photo 1 –

Dust control and sound proofing measure implemented prior to concrete removal.



Photo 2 –

Dust control and sound proofing measure implemented prior to concrete removal.



Photo 3 –

Constructors working on foundations for structures prior to concrete removal.

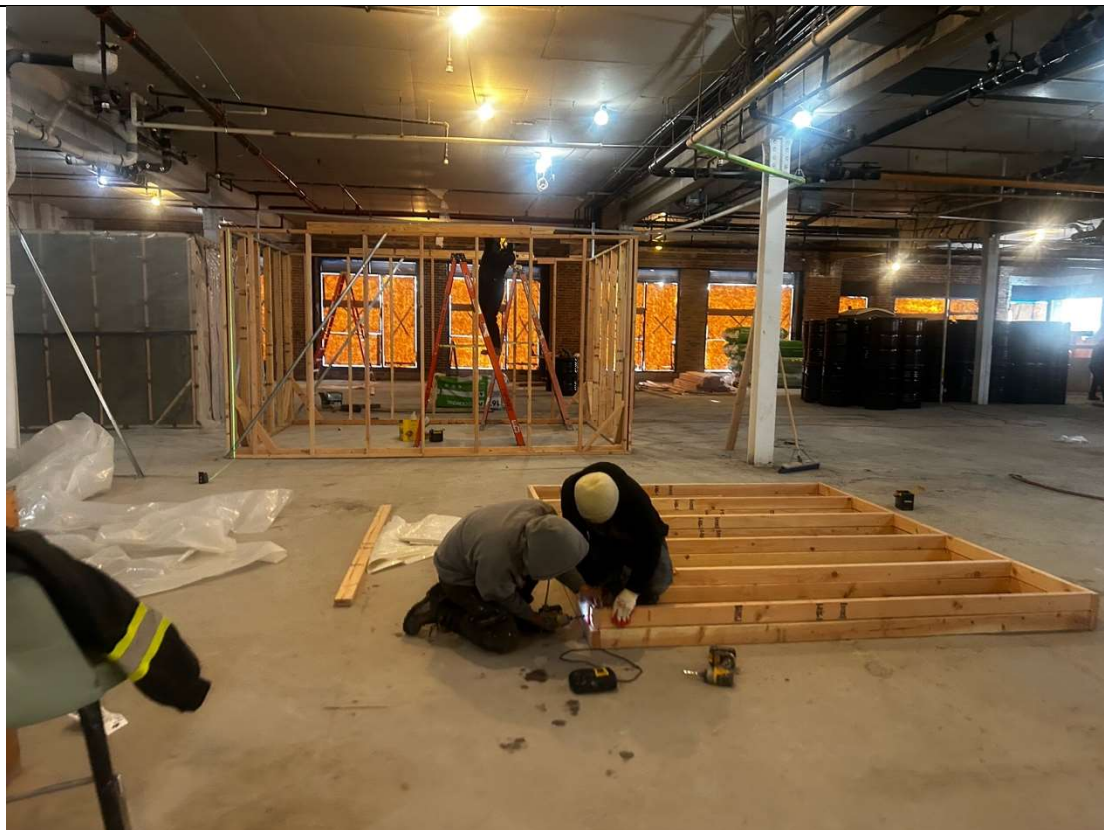




Photo 4–

Dust control and sound proofing measure implemented prior to concrete removal.



Photo 5 –

CAMP Station  
1 – Second  
Floor.



# Daily Air Monitoring Log

Project Name: 135 Kent Ave

Date: 01/28/2026

Project Location: 135 Kent Avenue, Brooklyn, NY

BCP No: C224177

Outdoor Temperature: 10 F

Indoor Temperature: 23 F

Background Data: CS-1:

PID 0.0 ppm

Dust Meter 1 – 0.027 ug/m<sup>3</sup>

CS-2:

PID 0.0 ppm

Dust Meter 2 – 0.036 ug/m<sup>3</sup>

Time	CAMP Station 1 (CS-1)		CAMP Station 2 (CS-2)	
	PID - ppm	Dust - ug/m <sup>3</sup>	PID - ppm	Dust - ug/m <sup>3</sup>
0800	NSD	NSD	NSD	NSD
0815	NSD	NSD	NSD	NSD
0830	NSD	NSD	NSD	NSD
0845	NSD	NSD	NSD	NSD
0900	NSD	NSD	NSD	NSD
0915	NSD	NSD	NSD	NSD
0930	NSD	NSD	NSD	NSD
0945	NSD	NSD	NSD	NSD
1000	NSD	NSD	NSD	NSD
1015	NSD	NSD	NSD	NSD
1030	NSD	NSD	NSD	NSD
1045	NSD	NSD	NSD	NSD
1100	NSD	NSD	NSD	NSD
1115	NSD	NSD	NSD	NSD
1130	NSD	NSD	NSD	NSD
1145	NSD	NSD	NSD	NSD
1200	NSD	NSD	NSD	NSD
1215	NSD	NSD	NSD	NSD
1230	NSD	NSD	NSD	NSD
1245	NSD	NSD	NSD	NSD
1300	NSD	NSD	NSD	NSD
1315	NSD	NSD	NSD	NSD
1330	NSD	NSD	NSD	NSD
1345	NSD	NSD	NSD	NSD
1400	NSD	NSD	NSD	NSD
1415	NSD	NSD	NSD	NSD
1430	NSD	NSD	NSD	NSD
1445	NSD	NSD	NSD	NSD
1500	NSD	NSD	NSD	NSD
1515	NSD	NSD	NSD	NSD
1530	NSD	NSD	NSD	NSD
1545	NSD	NSD	NSD	NSD
1600	NSD	NSD	NSD	NSD
1615	NSD	NSD	NSD	NSD
1630	NSD	NSD	NSD	NSD

**STONE IMPORT TICKET**

**DRUM MANIFESTS/PACKAGING SLIPS**  
**(No Drums Collected Today)**

Number of Drum Removed to Date	Shipment Date	Manifest /Packaging Slip Number	Transporter Name/Truck Name	Off-Site Disposal Facility	Material Type (Concrete, Soil, Haz Soil, etc)	Estimated Quantity (Gallons & CY) 55-Gallons = 0.27 CY
1				Veolia North America		
2						
3						
4						
5						
6						
7						
8						
9						
10						
11						
12						
13						
14						