

## DAILY STATUS REPORT

Prepared By: Antonio Cardenas

WEATHER	Snow		Rain		Overcast		Partly Cloudy	X	Bright Sun	
TEMP.	< 32		32-50		50-70		70-85	X	>85	

<b>NYSDEC BCP Site No:</b>	C224219	<b>Date:</b>	8/19/2024
<b>Project Name:</b>	450 Union Street, Brooklyn, NY		

<b>Consultant:</b> Vektor Consultants – Antonio Cardenas  <b>Visitors:</b> WSP –Chris Disclafani NYSDEC – Meghan Medwid and Aaron Fischer	<b>Personnel On-Site:</b> Geo-Solutions Inc.- Subcontractor
--	--

### Work Activities Performed:

- GSI introduced a 12% total cement addition using slag to Portland ratio of 2:1 by weight of soil reagent mix for ISS-3 within two overlapping columns.
- GSI moved to ISS-1 and began preclearing the drilling area of obstructions. An on-site drainage pipe was encountered and plugged at approximately 6 feet.
- The ISS-1 column was backfilled with spoils by the end of the workday.
- The performance parameters from the ISS rig's onboard data monitoring device are appended to this report as well as part of GSI's daily report.

### Community Air Monitoring Program (CAMP)

An Upwind and Downwind CAMP stations were placed within the perimeters of the Site during drilling activities. The Upwind CAMP station was in the northwest portion of the Site and the Downwind CAMP station was in the northeast portion of the Site as the wind was consistently coming from the northwest.

Background Levels (Initial Readings at Start of Day):

PID: 0.0 ppm      Dust: 0.0324 mg/m<sup>3</sup>

Highest Levels:

PID: 0.0 ppm      Dust: 0.0474 mg/m<sup>3</sup>

- Upwind CAMP was implemented during C&D restaging. CAMP equipment consisted of a DustTrack II Model 8530; S/N: 8530210705, AND MiniRAE 3000, Model PGM-7320 photoionization detector (PID); S/N: 592-601281.
- Downwind CAMP was implemented during C&D restaging. CAMP equipment consisted of a DustTrack II Model 8530; S/N: 8530221304, AND MiniRAE 3000, Model PGM-7320 photoionization detector (PID); S/N:592-926055.
- No VOC or dust concentrations were detected in exceedance of the daily short-term exposure limit (STEL) at the work area CAMP stations.

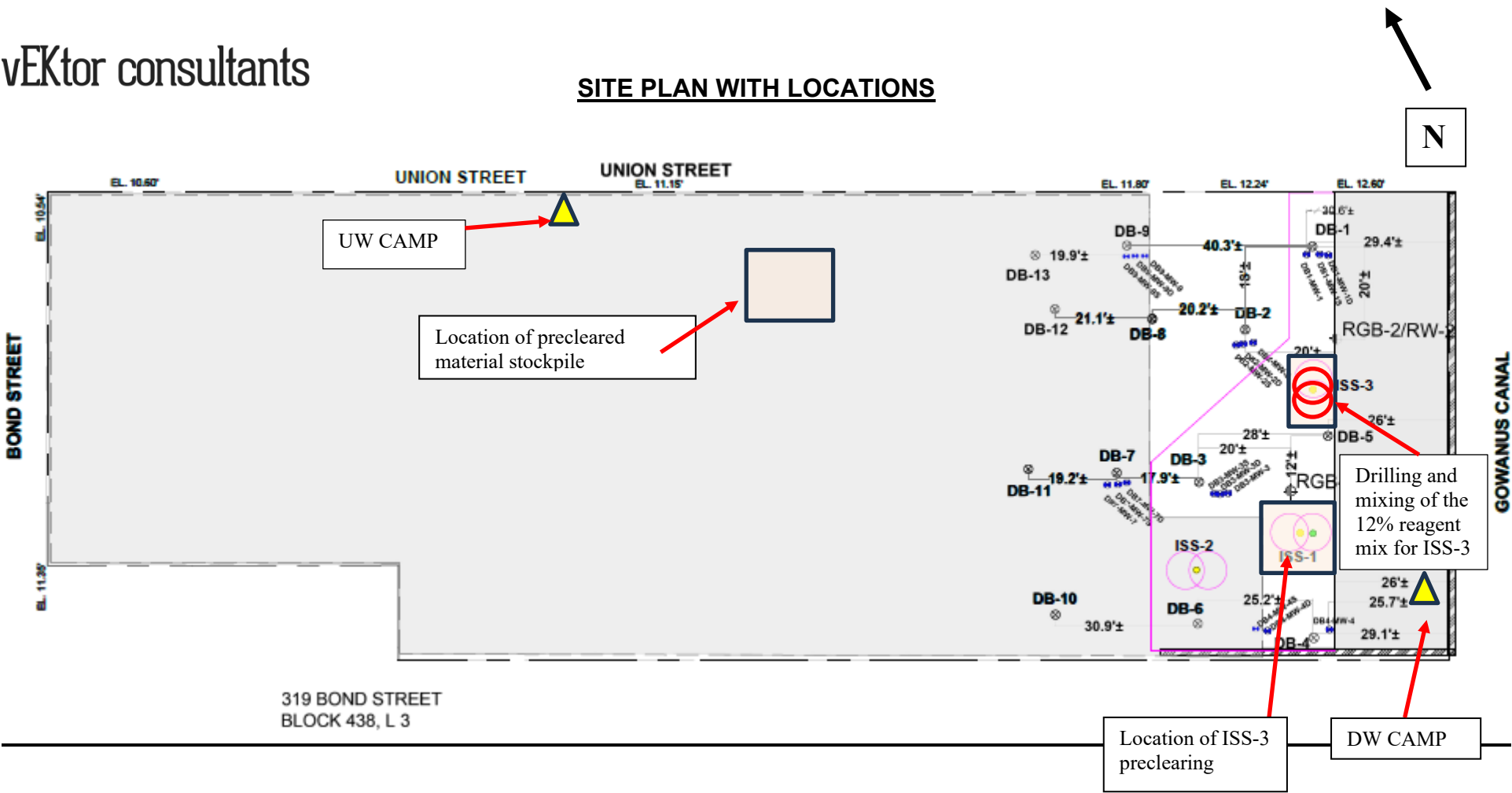
### Problems Encountered

During the column installation of ISS-3, groundwater and limited NAPL were observed daylighting from adjacent monitoring well manholes for a short period. GSI installed additional haybales, absorbent socks, and absorbent clay to ensure the daylighting water and NAPL remained on-site and was contained.

### Planned Activities for the Next Day

Installation of ISS-1 (adjusted to be the 9% mix instead of the 6% mix). The change in plan was approved by NYSDEC in the field.

SITE PLAN WITH LOCATIONS



## Photo Log

Photo 1:  
Upwind CAMP setup at the start of  
the day, facing east.



Photo 2:  
Downwind CAMP setup at the start of  
the day, facing north.



Photo 3:  
ISS drilling and introduction of the  
12% reagent mix for ISS-3, facing  
north.

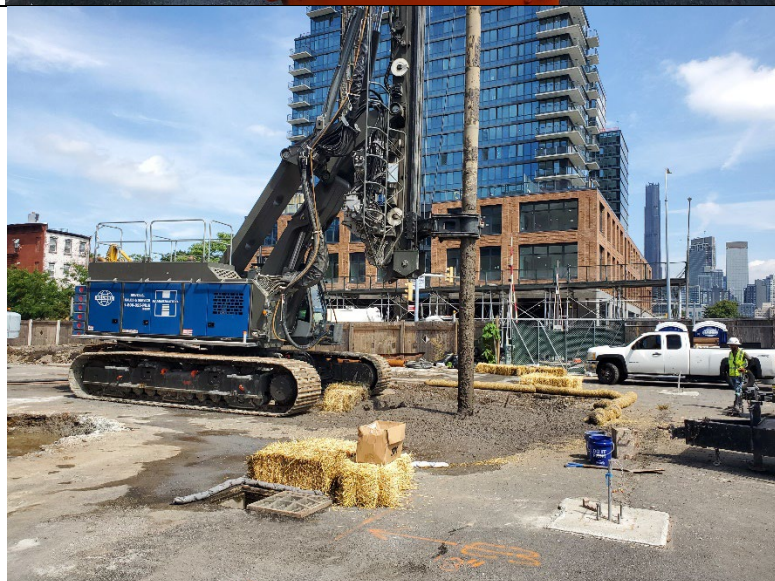




Photo 4:  
Grabbing of wet samples for ISS-3,  
facing south.

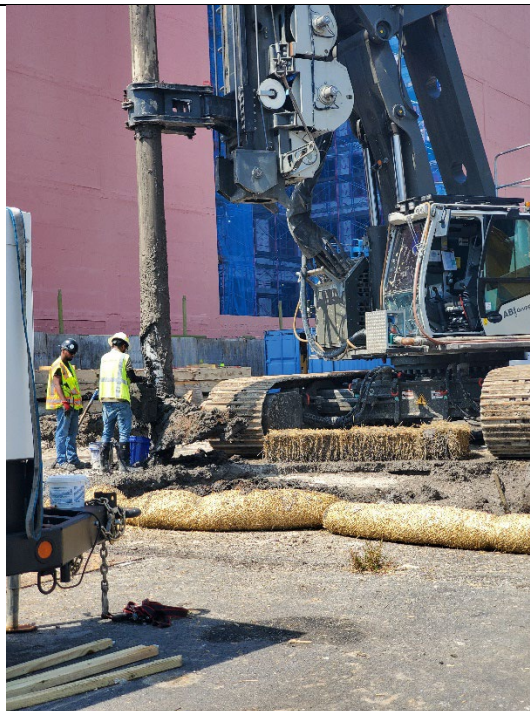


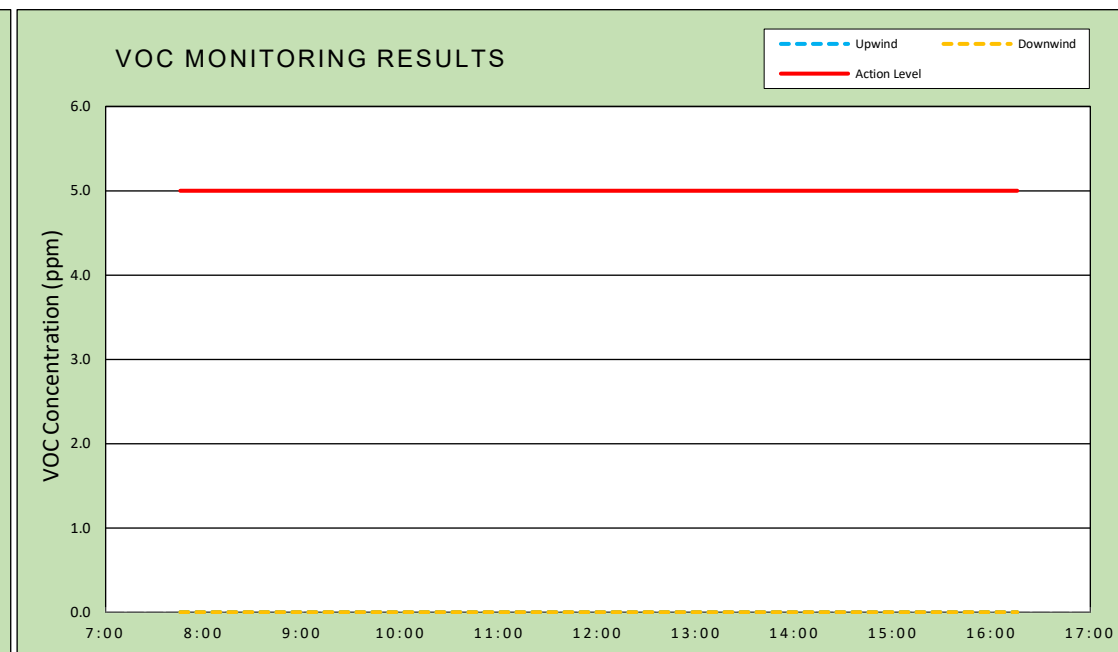
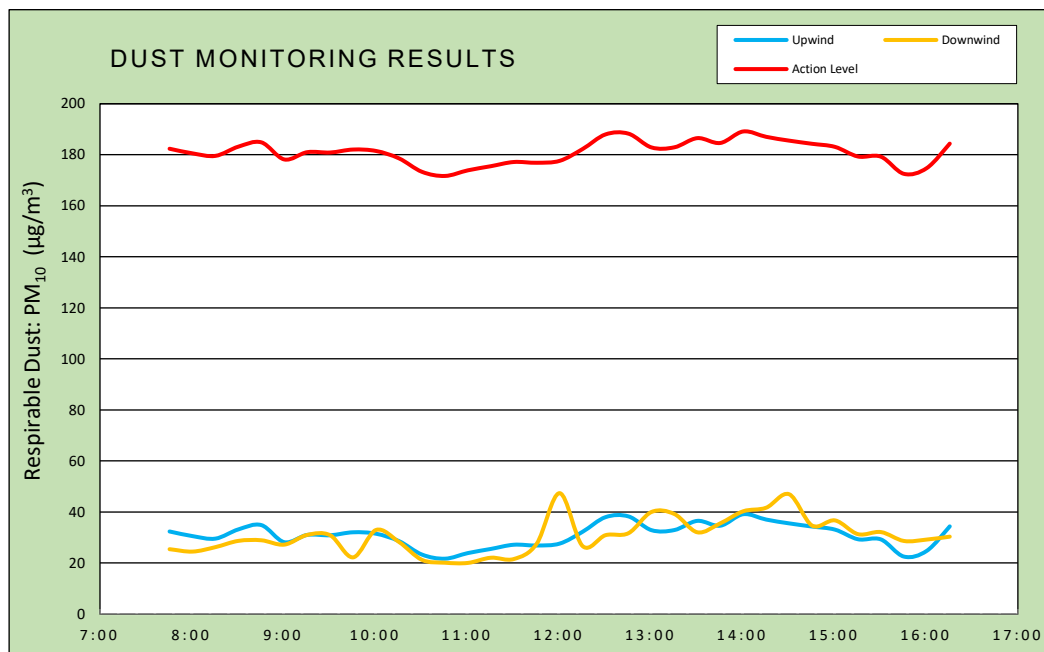
Photo 5:  
Obstruction removal and plugging of  
drainage pipe encountered in the  
location of ISS-1, facing east.



<b>vEktor consultants</b>  37 W. 37th St, 6th Floor - New York, NY	<b>DAILY AIR MONITORING REPORT</b>  <b>450 Union Street</b>  <b>Brooklyn, New York</b>				<b>08/19/2024</b>	
					Rev. No. 0	Page 1 of 2
					Project Number:	
					Dust Action Level	150 $\mu\text{g}/\text{m}^3$
		VOC Action Level	5 ppm			

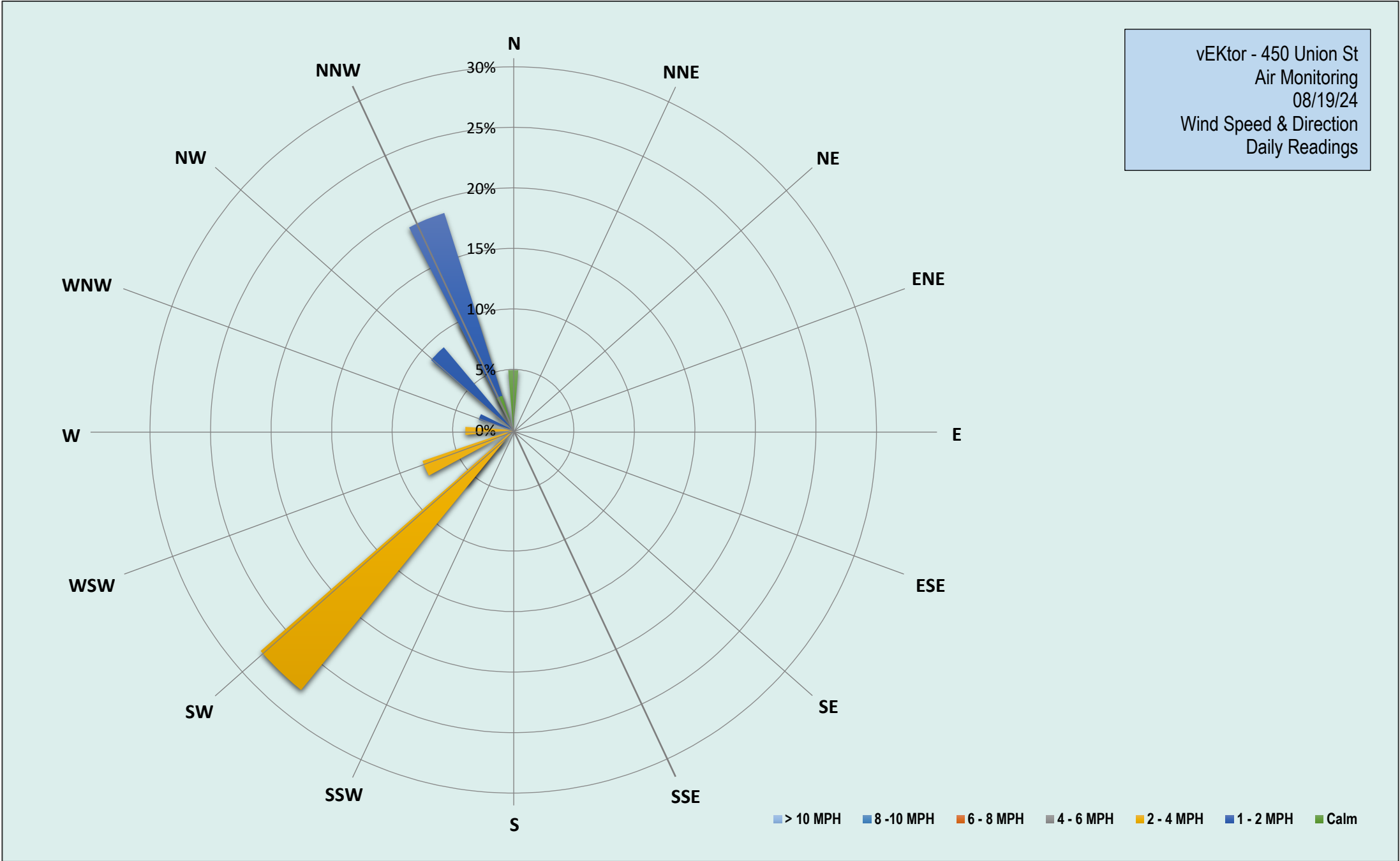
Weather Data Range for Work Day		Wind Direction	SW	Relative Humidity (%)	49.0 - 98.0	Daily Rain Total (in)	0.06	Readings in the summary table and graphs below are the reported downwind concentrations.
Temperature (°F)	71.0 - 88.0	Wind Speed (MPH)	0.6 - 8.0	Barometer (inHg)	29.70 - 29.70	Avg. Dew Point Temp (°F)	70.4	

Station Location	Daily Avg. Dust Concentration ( $\mu\text{g}/\text{m}^3$ )	Max 15-Min Dust Concentration ( $\mu\text{g}/\text{m}^3$ )	Time of Max Dust Reading	Daily Avg. VOC Concentration (ppm)	Max 15-Min VOC Concentration (ppm)	Time of Max VOC Reading
Upwind	31.0	39.1	14:01	0.0	0.0	7:46
Downwind	30.8	47.4	12:01	0.0	0.0	7:46



Air Monitoring Notes:

Weather Notes:



Monday, August 19, 2024				
Number of Instances Where Downwind Particulates				0
Number of Comparable Data Points =				35
Start Time:				7:46
End Time:				16:16
PARTICULATE DATA				
Upwind		Downwind		Exceeds Particulate Alarm Limit
Time	15-Min Avg Concentration (ug/m <sup>3</sup> )	Time	15-Min Avg Concentration (ug/m <sup>3</sup> )	
7:46	32.4	7:46	25.4	-
8:01	30.6	8:01	24.5	-
8:16	29.6	8:16	26.2	-
8:31	33.2	8:31	28.7	-
8:46	34.9	8:46	28.9	-
9:01	28.2	9:01	27.2	-
9:16	31.0	9:16	31.0	-
9:31	30.9	9:31	30.9	-
9:46	32.1	9:46	22.2	-
10:01	31.5	10:01	33.0	-
10:16	28.6	10:16	28.2	-
10:31	23.3	10:31	21.2	-
10:46	21.7	10:46	20.1	-
11:01	23.9	11:01	20.0	-
11:16	25.5	11:16	22.1	-
11:31	27.2	11:31	21.6	-
11:46	26.9	11:46	27.6	-
12:01	27.6	12:01	47.4	-
12:16	32.3	12:16	26.7	-
12:31	38.0	12:31	30.9	-
12:46	38.3	12:46	31.7	-
13:01	32.9	13:01	40.0	-
13:16	32.9	13:16	39.2	-
13:31	36.5	13:31	32.0	-
13:46	34.6	13:46	35.6	-
14:01	39.1	14:01	40.3	-
14:16	37.0	14:16	41.7	-
14:31	35.5	14:31	47.0	-
14:46	34.3	14:46	34.7	-
15:01	33.1	15:01	36.7	-
15:16	29.3	15:16	31.3	-
15:31	29.3	15:31	32.1	-
15:46	22.5	15:46	28.7	-
16:01	24.8	16:01	29.2	-
16:16	34.4	16:16	30.3	-

Exceedance  
Level

182.4

180.6

179.6

183.2

184.9

178.2

181.0

180.9

182.1

181.5

178.6

173.3

171.7

173.9

175.5

177.2

176.9

177.6

182.3

188.0

188.3

182.9

182.9

186.5

184.6

189.1

187.0

185.5

184.3

183.1

179.3

179.3

172.5

174.8

184.4

Upwind DustTrak Data Summary		
Daily Maximum	54.0	ug/m <sup>3</sup>
Daily Minimum	4.3	ug/m <sup>3</sup>
Daily Average	31.0	ug/m <sup>3</sup>
Maximum 15-Minute Average	39.1	ug/m <sup>3</sup>

Downwind DustTrak Data Summary		
Daily Maximum	85.8	ug/m <sup>3</sup>
Daily Minimum	2.5	ug/m <sup>3</sup>
Daily Average	30.8	ug/m <sup>3</sup>
Maximum 15-Minute Average	47.4	ug/m <sup>3</sup>

Monday, August 19, 2024				
Number of Instances Where Downwind VOCs Exceeds				0
Number of Comparable Data Points =				0
Start Time:				7:46
End Time:				16:16
PID DATA				
Upwind		Downwind		Exceeds VOC Alarm Limit
Time	15-Min Avg Concentration (ppm)	Time	15-Min Avg Concentration (ppm)	
7:46	0.0	7:46	0.0	-
8:01	0.0	8:01	0.0	-
8:16	0.0	8:16	0.0	-
8:31	0.0	8:31	0.0	-
8:46	0.0	8:46	0.0	-
9:01	0.0	9:01	0.0	-
9:16	0.0	9:16	0.0	-
9:31	0.0	9:31	0.0	-
9:46	0.0	9:46	0.0	-
10:01	0.0	10:01	0.0	-
10:16	0.0	10:16	0.0	-
10:31	0.0	10:31	0.0	-
10:46	0.0	10:46	0.0	-
11:01	0.0	11:01	0.0	-
11:16	0.0	11:16	0.0	-
11:31	0.0	11:31	0.0	-
11:46	0.0	11:46	0.0	-
12:01	0.0	12:01	0.0	-
12:16	0.0	12:16	0.0	-
12:31	0.0	12:31	0.0	-
12:46	0.0	12:46	0.0	-
13:01	0.0	13:01	0.0	-
13:16	0.0	13:16	0.0	-
13:31	0.0	13:31	0.0	-
13:46	0.0	13:46	0.0	-
14:01	0.0	14:01	0.0	-
14:16	0.0	14:16	0.0	-
14:31	0.0	14:31	0.0	-
14:46	0.0	14:46	0.0	-
15:01	0.0	15:01	0.0	-
15:16	0.0	15:16	0.0	-
15:31	0.0	15:31	0.0	-
15:46	0.0	15:46	0.0	-
16:01	0.0	16:01	0.0	-
16:16	0.0	16:16	0.0	-

Exceedance Level

5.0

5.0

5.0

5.0

5.0

5.0

5.0

5.0

5.0

5.0

5.0

5.0

5.0

5.0

5.0

5.0

5.0

5.0

5.0

5.0

5.0

5.0

5.0

5.0

5.0

5.0

5.0

5.0

5.0

5.0

5.0

5.0

Upwind PID Data Summary		
Daily Maximum	0.0	ppm
Daily Minimum	0.0	ppm
Daily Average	0.0	ppm
Maximum 15-Minute Average	0.0	ppm

Downwind PID Data Summary		
Daily Maximum	0.0	ppm
Daily Minimum	0.0	ppm
Daily Average	0.0	ppm
Maximum 15-Minute Average	0.0	ppm



<b>Project:</b>	450 Union Remediation	<b>Project No.:</b>	24-071	<b>Date:</b>	08/19/24
<b>Client:</b>	2201 Union LLC	<b>Location:</b>	Brooklyn, NY	<b>Day of Week:</b>	Monday
<b>Owner:</b>	2201 Union LLC	<b>Superintendent:</b>	Rick McKay	<b>Days on Site:</b>	10
<b>Manager:</b>	Trae Deri	<b>Engineer:</b>	Srujan Prasad	<b>Shift Times:</b>	7:00-17:00

<b>Weather:</b>			
<b>Low:</b>	66	<b>Cloud Cover:</b>	Sunny
<b>High:</b>	85	<b>Precipitation:</b>	0"
		<b>Wind:</b>	5 -10MPH
		<b>Direction:</b>	NW
<b>Description of Work Activities:</b>			
<ul style="list-style-type: none"> <li>- 0700 to 0730, GSI held a tailgate safety meeting and discussed the day's planned activities with site personnel.</li> <li>- 0800 to 0830, prepped batch plant for production of grout.</li> <li>- At 1015, GSI received 1 delivery of slag.</li> <li>- 0830 to 0900, GSI added grout line, staked column.</li> <li>- From 0929 to 1128, GSI Installed column E6. Following the completion of the column, GSI collected a sample at 18 ftbgs and casted the material into cylinders.</li> <li>- From 1229 to 1400, GSI Installed column E7. Following the completion of the column, GSI collected a sample at 22 ftbgs and casted the material into cylinders.</li> <li>- 1415 to 1630, GSI Pre cleared the column E3 upto 5ftbgs using Kobelco excavator, clearing big pieces of concrete rocks and backfilled with spoils.</li> <li>- 1630 to 1700, Kobelco excavator managed ISS spoils, fueled equipment, washed out lines and performed general maintenance.</li> <li>- 1715, All GSI personnel offsite.</li> </ul>			
<b>Conversation with Client/Inspector:</b>			
<b>Production Delays:</b>			
GSI attempted to excavate the column E3 obstruction prior to abandoning the column for completion at a later date.			
<b>Safety Topics:</b>			
Discussed: Importance of Reporting All Injuries Safety Talk.			

Rick McKay  
 Foreman/Superintendent

08/19/24  
 Date

<b>Project:</b>	450 Union Remediation				<b>Project No.:</b>	24-071		<b>Date:</b>	08/19/24		
<b>Client:</b>	2201 Union LLC				<b>Location:</b>	Brooklyn, NY		<b>Day of Week:</b>	Monday		
<b>Owner:</b>	2201 Union LLC				<b>Superintendent:</b>	Rick Mckay		<b>Days on Site:</b>	10		
<b>Manager:</b>	Trae Deri				<b>Engineer:</b>	Srujan Prasad		<b>Shift Times:</b>	7:00-17:00		
<b>Production:</b>						<b>Completion:</b>					
<b>Today:</b> 227.34 CY 2 Columns						<b>5% Columns</b>					
<b>To-Date:</b> 227.34 CY 2 Columns						<b>5.17% CY</b>					
<b>Materials Received:</b>											
<b>Material</b>		<b>Unit</b>	<b>Today</b>			<b>Total</b>		<b>Notes</b>			
Slag- Grade 120		Ton	25			50					
Portland Cement - Type 1L		Ton	0			25					
<b>Hours</b>	<b>Equipment</b>		<b>Task</b>		<b>Hours</b>	<b>Employees On Site</b>			<b>Trade</b>		
	Offroad Forklift		Material Handling			Trae Deri			PM		
9.0	185 Air Compressor		ISS Mixing		10.5	Rick McKay			SUPT		
9.0	Conex box(1)		Storage		10.5	Srujan Prasad			ENG		
9.0	300kw Generator		Batch Plant		10.0	Eric Shannon			DRILL		
9.0	Lo-pro silo(2)		Cement Storage		10.0	Miguel Maldonado			LAB		
9.0	Flash mixers (2)		Batch Plant		8.5	Daniel Oliveira			BPO		
9.0	Moyno pump(2)		Batch Plant		10.0	Peter Liota			OP		
9.0	Delmag Hydraulic Rig		ISS Mixing		8.5	Christopher Ramdial			Oiler		
2.0	Manlift		Maintenance		10.0	Steven Reda			LAB		
9.0	Kobelco Excavaor		ISS Mixing		8.5	Santo Oliveri			OP		
9.0	250kw Generator		Batch Plant								
<b>83</b>	<b>TOTAL DAY HOURS</b>				<b>87</b>	<b>TOTAL DAY HOURS</b>					

**LEGEND:**

**SUPT**- Superintendent, **PM**- Project Manager, **ENG** - Engineer, **SSHC** - Health & Safety Coordinator, **LAB** - Laborer, **OP** - Operator,  
**BPO** - Batch plant Operator, **OILER** - Oiler, **DRILLER** - Rig Opeartor

*Rick McKay*

Foreman/Superintendent

08/19/24

Date



IN-SITU SOIL STABILIZATION - AUGER MIXING  
COLUMN LOG

[illegible]

Comments:
- GSI sampled column E6 and E7 at a depth of 18 and 22 feet.

SIGNED: \_\_\_\_\_  
Client QC Manager

<b>Project:</b>	450 Union Remediation	<b>Project No.:</b>	24-071	<b>Date:</b>	08/19/24
<b>Client:</b>	2201 Union LLC	<b>Location:</b>	Brooklyn, NY	<b>Day of Week:</b>	Monday
<b>Owner:</b>	2201 Union LLC	<b>Superintendent:</b>	Rick Mckay	<b>Days on Site:</b>	10
<b>Manager:</b>	Trae Deri	<b>Engineer:</b>	Srujan Prasad	<b>Shift Times:</b>	7:00-17:00

### IN-SITU SOIL STABILIZATION - AUGER MIXING BATCH PLANT QUALITY CONTROL TESTING

#### Grout Testing

Date	Time	Water: Cement Ratio	Mud Balance S.G.
8/19/2024	11:55	1.0:1	1.51
8/19/2024	14:05	1.0:1	1.51

#### Calibration Log

Device	Date	Calibration (Y/N)	NOTES
Mud Balance	8/19/2024	Y	
Scales	8/19/2024	Y	Verified scales accuracy within 1%
Comments:			

*Rick Mckay*

Foreman/Superintendent

Client QC Manager

<b>Project:</b> 450 Union Remediation	<b>Project No.:</b> 24-071	<b>Date:</b> 08/19/24
<b>Client:</b> 2201 Union LLC	<b>Location:</b> Brooklyn, NY	<b>Day of Week:</b> Monday
<b>Owner:</b> 2201 Union LLC	<b>Superintendent:</b> Rick McKay	<b>Days on Site:</b> 10
<b>Manager:</b> Trae Deri	<b>Engineer:</b> Srujan Prasad	<b>Shift Times:</b> 7:00-17:00

## IN-SITU SOIL STABILIZATION - AUGER MIXING SAMPLE TESTING RESULTS

### Project Specifications:

<b>Perm:</b>	$\leq 1 \times 10^{-6}$
<b>UCS:</b>	$> 50$ psi

### Lab Results

Date	Time	Sample ID	Depth (bgs)	Number of cylinders casted		UCS	Permeability	
						28 Day	28 Day	
			(ft.)	3x6s	2x4s	(psi)	(cm/s)	
8/19/24	11:42 AM	E6	18	8	8			
8/19/24	2:10 PM	E7	22	8	8			

Comments:

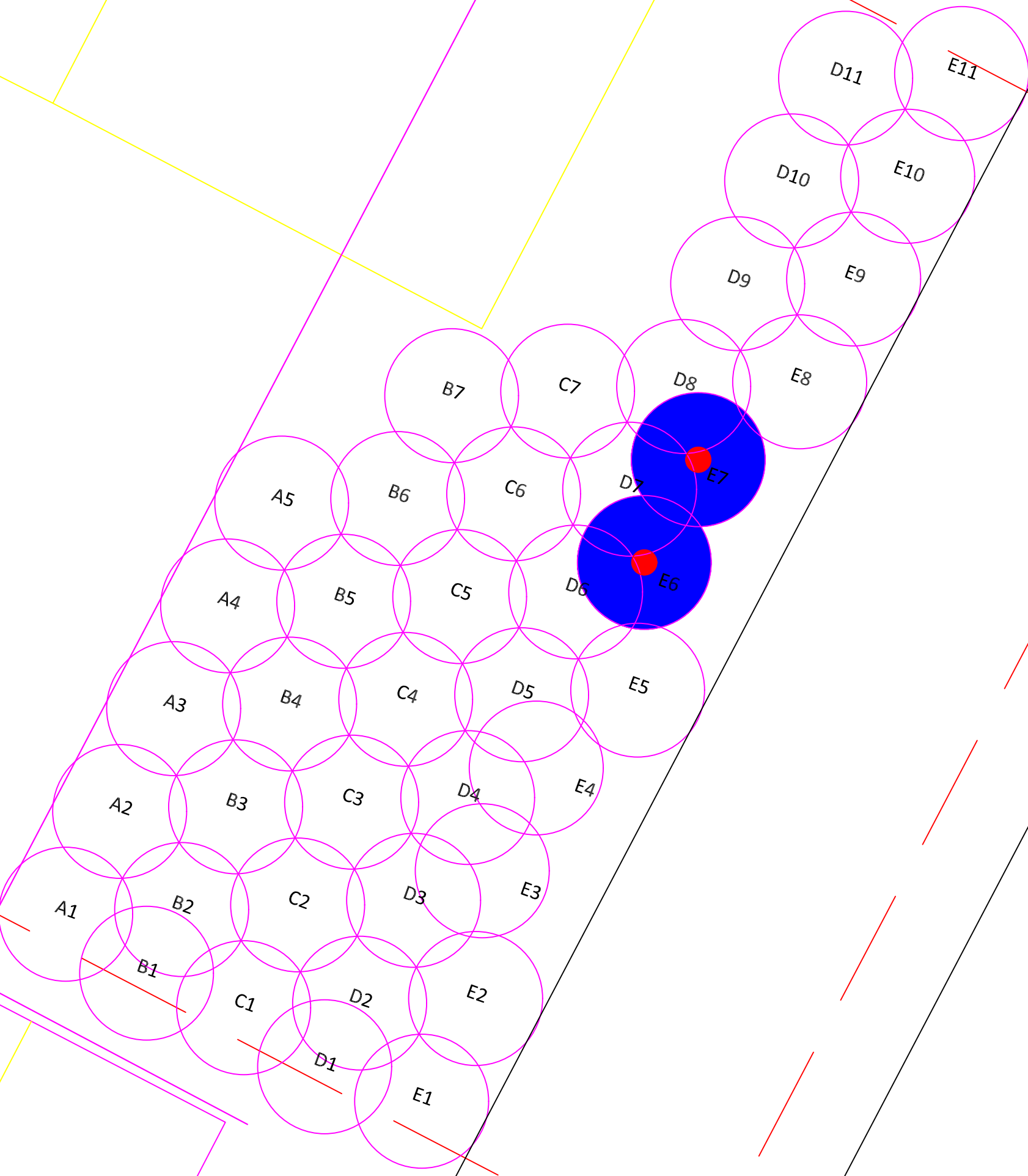
*Rick McKay*

Foreman/Superintendent

Client QC Manager



- Previously completed Columns
- Columns completed today
- Sampled Columns
- Obstructed Columns



GOWANUS CANAL

GOWANUS

CANAL

REV					DESCRIPTION					CHECKED				
A					REV					APPROVED				
B					REV					PROPERTY OF GEO-SOLUTIONS, INC. IMPORTANT: THIS DRAWING PRINT IS LOANED FOR MUTUAL ASSISTANCE AND AS SUCH IS SUBJECT TO RECALL AT ANY TIME. INFORMATION CONTAINED HEREON IS NOT TO BE DISCLOSED OR REPRODUCED IN ANY FORM FOR THE BENEFIT OF PARTIES OTHER THAN NECESSARY SUBCONTRACTORS AND SUPPLIERS WITHOUT THE WRITTEN CONSENT OF GEO-SOLUTIONS, INC.				
C					REV					APPROVED				

# Brooklyn, NY Auger ISS Report



## Job Site Data

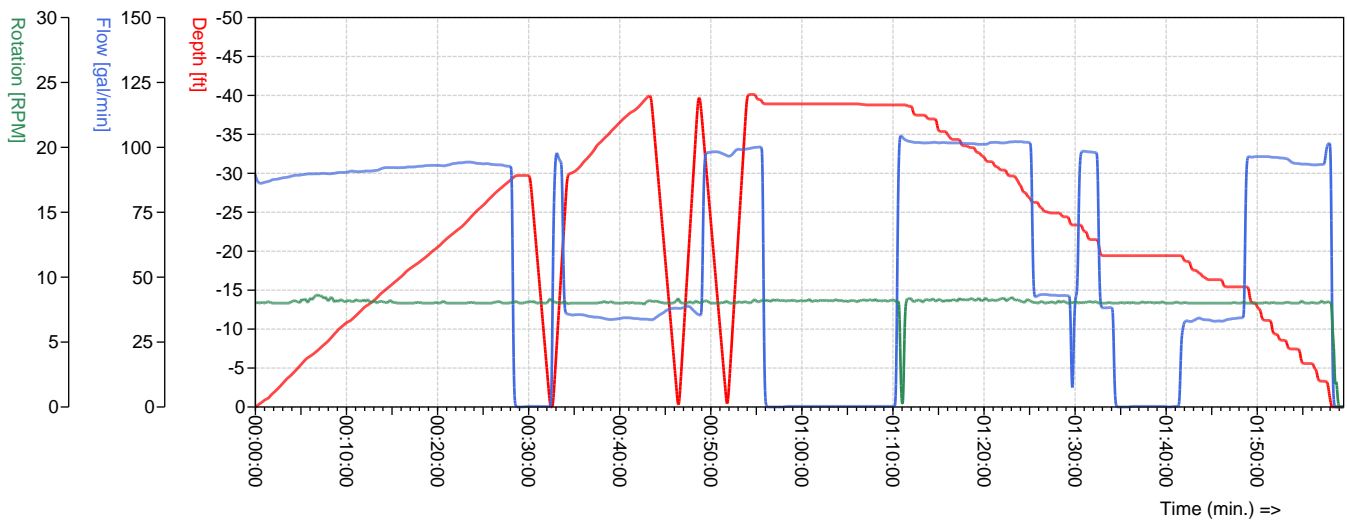
Project: Brooklyn, NY  
JobID: 24-071  
Client: Union LLC  
Contractor: Geo-Solutions  
Equipment ID: Delmag Rig

## Data for Pile No: E6

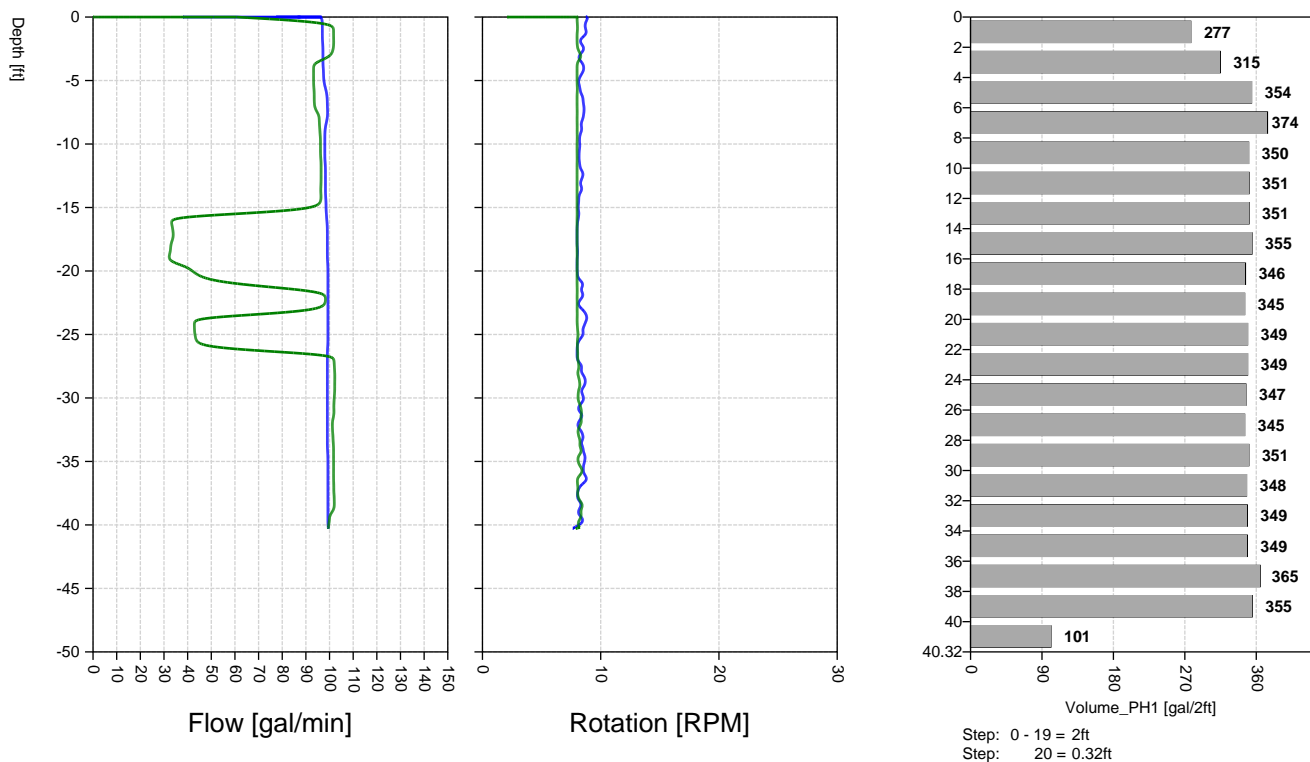
Date: 8/19/2024  
Start of production: 9:29:27 AM  
End of production: 11:28:55 AM  
Total time: 01:59:28  
Pause time: 00:00:00

Pile length: 40.32 ft  
Total Grout: 7034 gal  
Strokes: 3

## Parameters vs. Time



## Parameters vs. Depth



Comment

# Brooklyn, NY Auger ISS Report



## Job Site Data

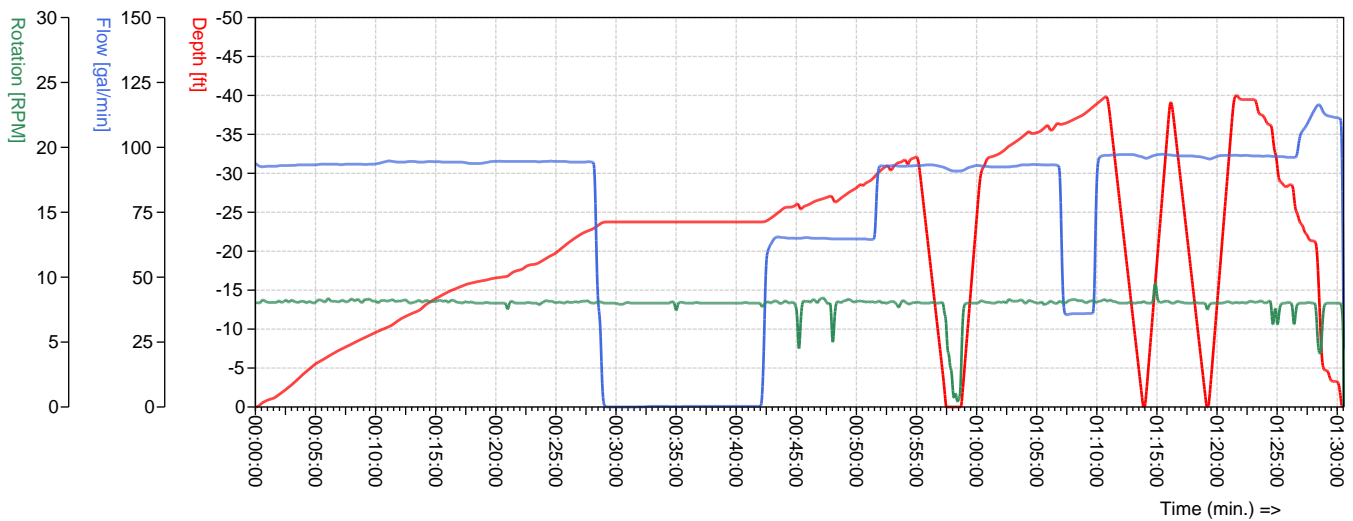
Project: Brooklyn, NY  
JobID: 24-071  
Client: Union LLC  
Contractor: Geo-Solutions  
Equipment ID: Delmag Rig

## Data for Pile No: E7

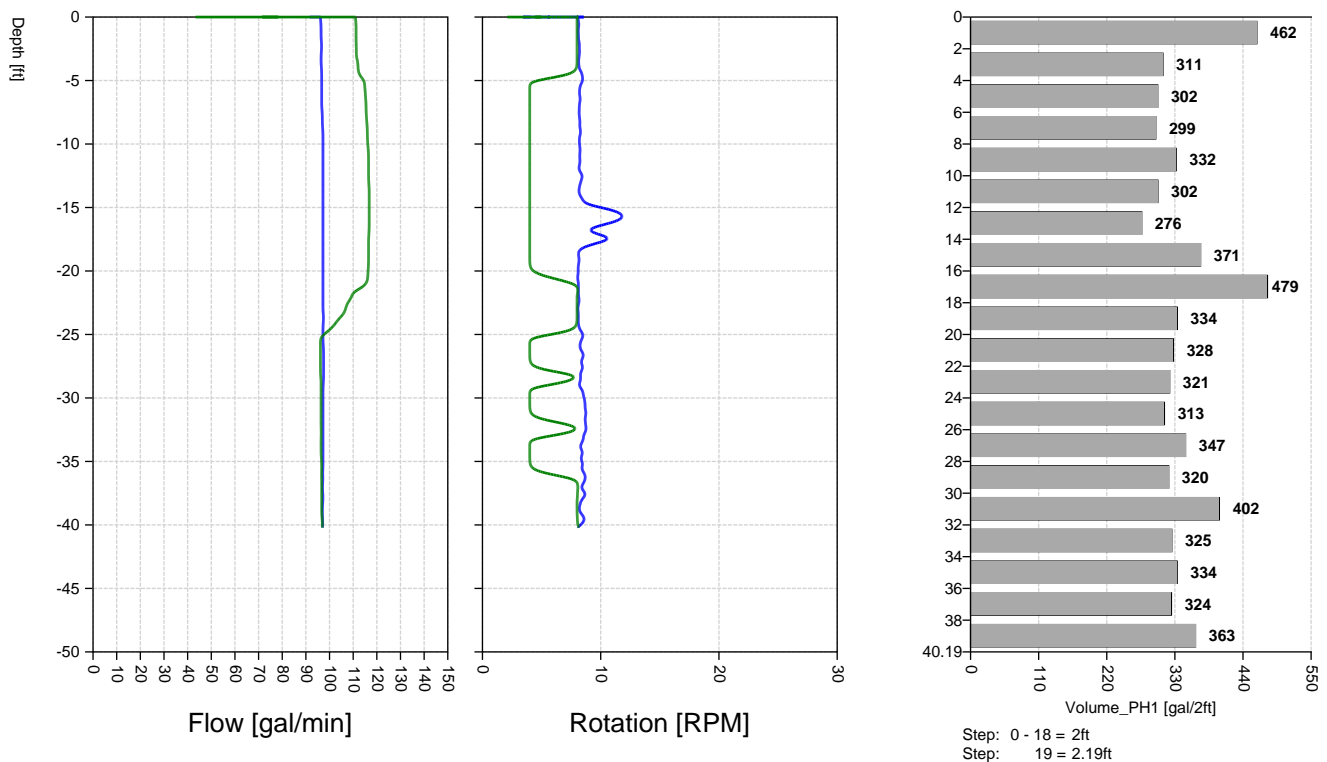
Date: 8/19/2024  
Start of production: 12:29:37 PM  
End of production: 2:00:08 PM  
Total time: 01:30:31  
Pause time: 00:00:00

Pile length: 40.19 ft  
Total Grout: 6862 gal  
Strokes: 3

## Parameters vs. Time



## Parameters vs. Depth



Comment