

DAILY STATUS REPORT

Prepared By: Thomas Giordano

WEATHER	Snow		Rain		Overcast		Partly Cloudy	X	Bright Sun	
TEMP.	< 32		32-50		50-70	X	70-85	X	>85	

NYSDEC BCP Site No:	C224219	Date:	8/20/2024
Project Name:	450 Union Street, Brooklyn, NY		

Consultant: Vektor Consultants – Peter Rath sack Visitors: WSP – Chris Disclafani NYSDEC – Meghan Medwid and Aaron Fischer	Personnel On-Site: Geo-Solutions Inc.- Subcontractor
--	--

Work Activities Performed:

- GSI encountered obstructions in the ISS-1 location that prevented pilot column installation.
- GSI begin preclearing ISS-2 for pilot test column installation. A large concrete obstruction was encountered at approximately 10 feet below site grade. GSI is acquiring a hammer attachment for the excavator to facilitate the removal of the obstruction.

Community Air Monitoring Program (CAMP)

An Upwind and Downwind CAMP stations were placed within the perimeters of the Site during drilling activities. The Upwind CAMP station was in the northwest portion of the Site and the Downwind CAMP station was in the southeast portion of the Site as the wind was consistently coming from the northwest.

Background Levels (Initial Readings at Start of Day):

PID: 0.0 ppm Dust: 0.0107 mg/m³

Highest Levels:

PID: 0.0 ppm Dust: 0.0656 mg/m³

- Upwind CAMP was implemented during C&D restaging. CAMP equipment consisted of a DustTrack II Model 8530; S/N: 8530210705, AND MiniRAE 3000, Model PGM-7320 photoionization detector (PID); S/N: 592-601281.
- Downwind CAMP was implemented during C&D restaging. CAMP equipment consisted of a DustTrack II Model 8530; S/N: 8530221304, AND MiniRAE 3000, Model PGM-7320 photoionization detector (PID); S/N:592-926055.
- No VOC or dust concentrations were detected in exceedance of the daily short-term exposure limit (STEL) at the work area CAMP stations.

Problems Encountered

During the preclearing of ISS-1, concrete was encountered below the storm drainpipe. Removal of this concrete would cause damage to the drainage structure. Additionally, the SOE wall installed during the bulkhead construction (consisting of H-piles and lagging) was encountered. Removal and capping of the storm drain system will occur during full-scale ISS implementation.

Planned Activities for the Next Day

Continued removal of the obstruction in the ISS-2 column locations. Installation of pilot test column ISS-2.

SITE PLAN WITH LOCATIONS

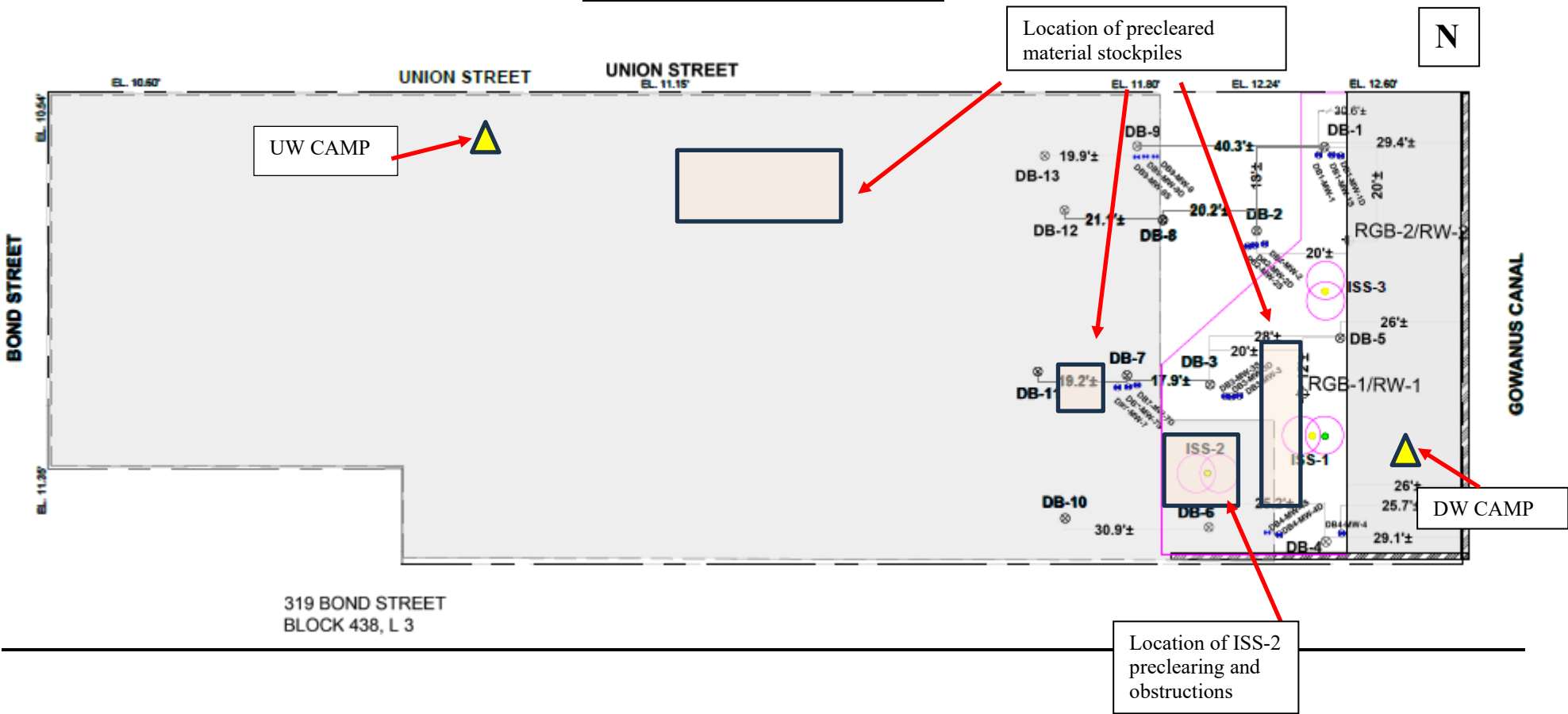


Photo Log

Photo 1:
View of preclearing of the ISS-1
location, facing southeast.



Photo 2:
View of ISS-1 precleared area with
SOE wall visible.

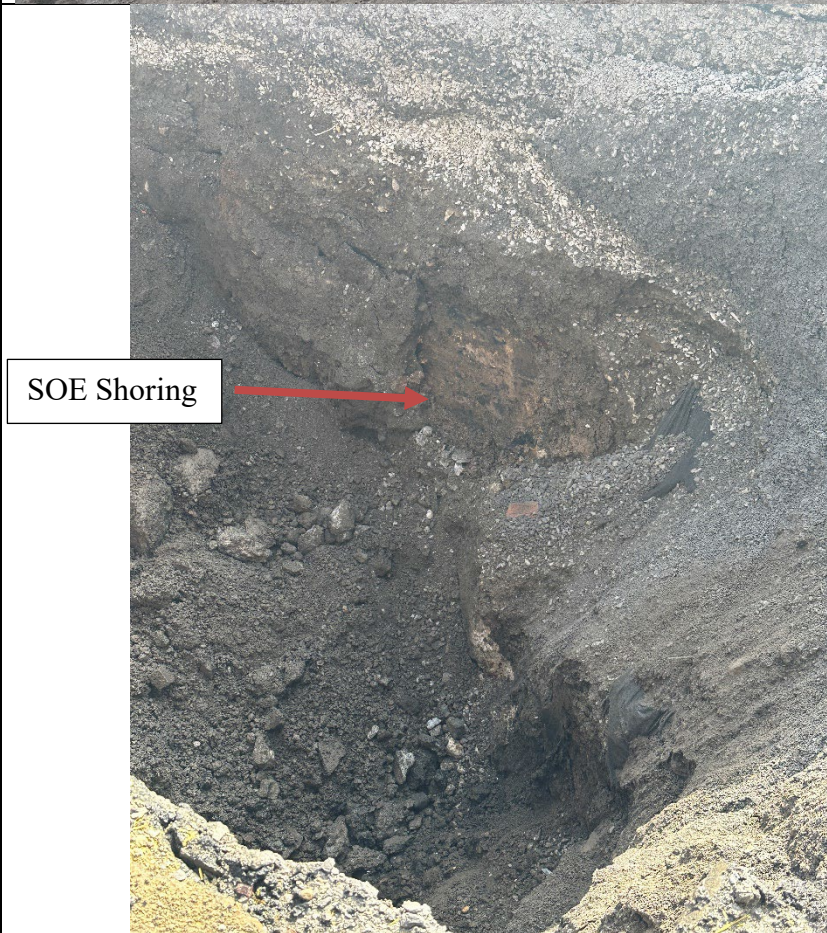


Photo 3:
GSI preclearing ISS-2, facing
southwest.



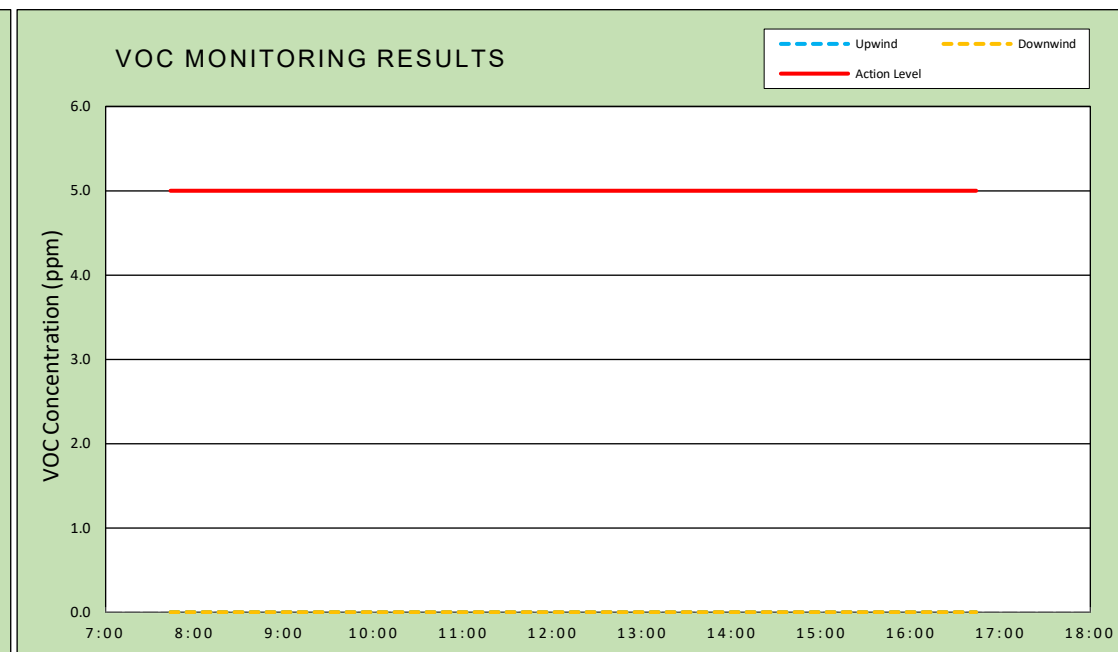
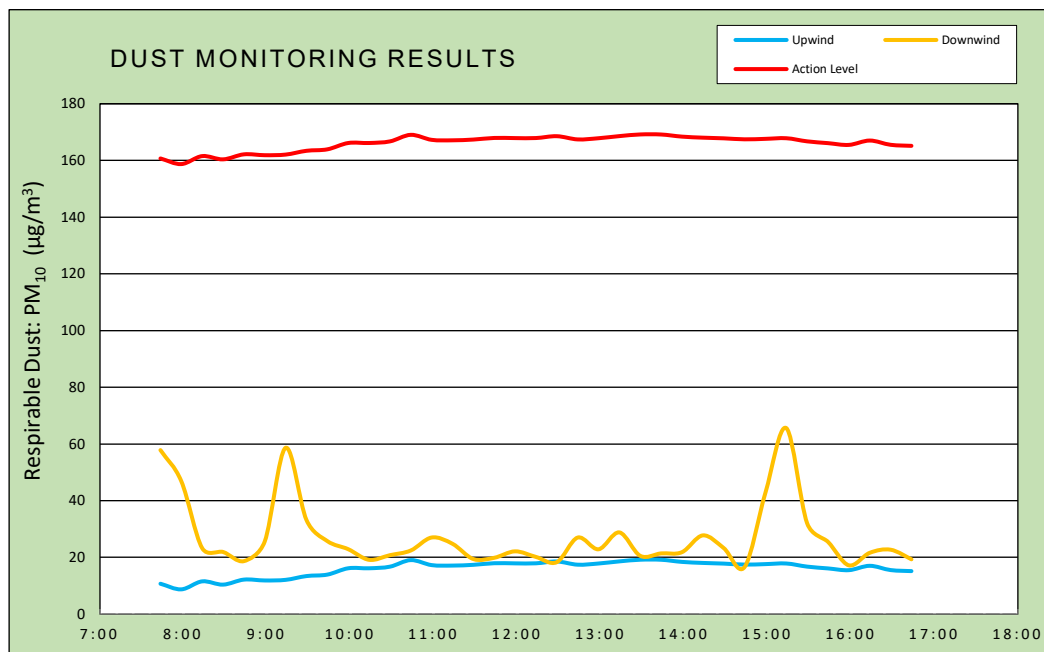
Photo 4:
View of concrete removed from ISS-
2, facing west.



vEktor consultants 37 W. 37th St, 6th Floor - New York, NY	DAILY AIR MONITORING REPORT 450 Union Street Brooklyn, New York				08/20/2024	
					Rev. No. 0	Page 1 of 2
					Project Number:	
					Dust Action Level	150 $\mu\text{g}/\text{m}^3$
		VOC Action Level	5 ppm			

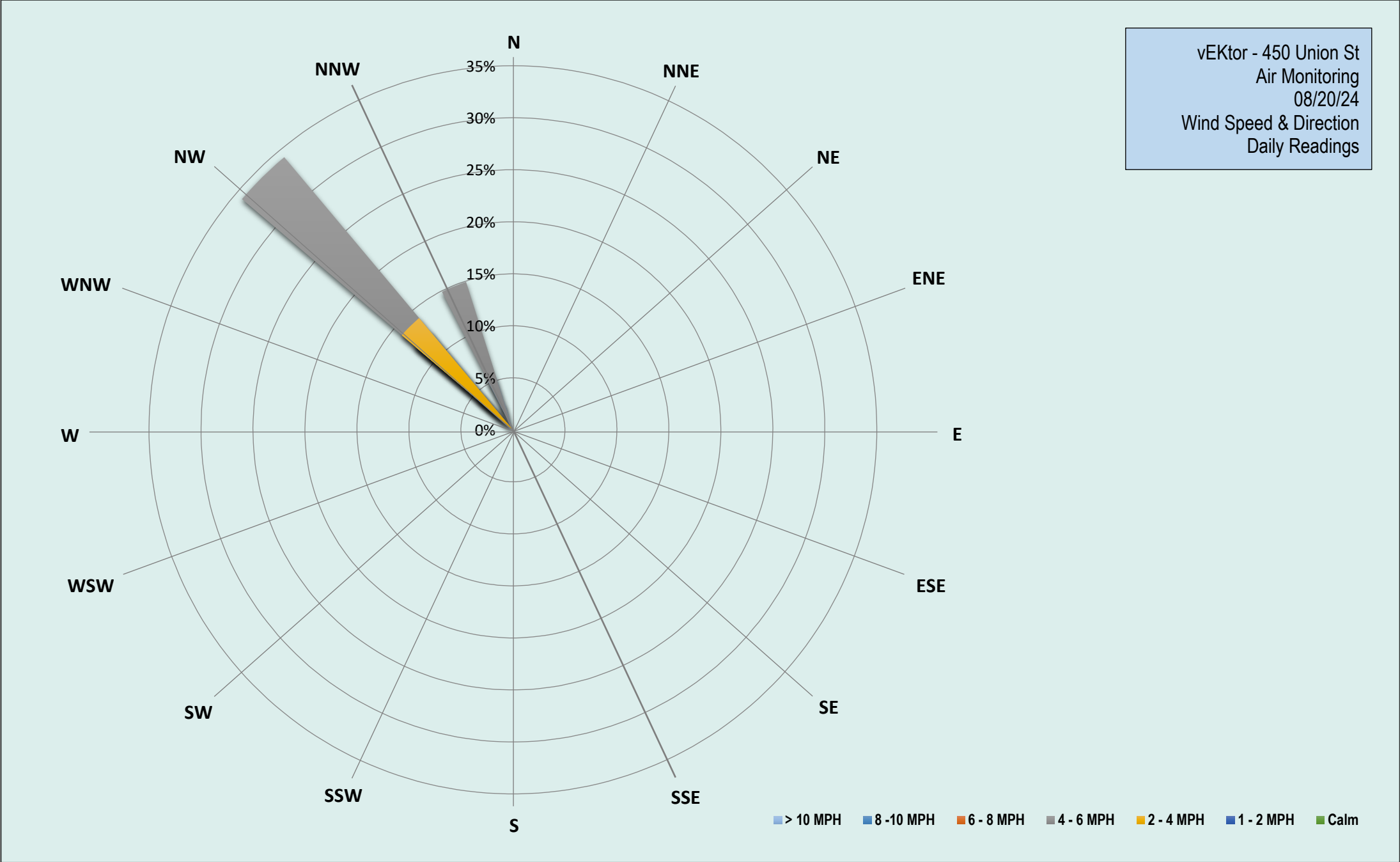
Weather Data Range for Work Day		Wind Direction	NW	Relative Humidity (%)	38.0 - 74.0	Daily Rain Total (in)	0.00	Readings in the summary table and graphs below are the reported downwind concentrations.
Temperature (°F)	62.0 - 73.0	Wind Speed (MPH)	3.5 - 11.4	Barometer (inHg)	29.90 - 29.90	Avg. Dew Point Temp (°F)	51.0	

Station Location	Daily Avg. Dust Concentration ($\mu\text{g}/\text{m}^3$)	Max 15-Min Dust Concentration ($\mu\text{g}/\text{m}^3$)	Time of Max Dust Reading	Daily Avg. VOC Concentration (ppm)	Max 15-Min VOC Concentration (ppm)	Time of Max VOC Reading
Upwind	16.0	19.2	13:29	0.0	0.0	7:44
Downwind	27.1	65.6	15:14	0.0	0.0	7:44



Air Monitoring Notes:

Weather Notes:



Tuesday, August 20, 2024				
Number of Instances Where Downwind Particulates				0
Number of Comparable Data Points =				37
Start Time:				7:44
End Time:				16:44
PARTICULATE DATA				
Upwind		Downwind		Exceeds Particulate Alarm Limit
Time	15-Min Avg Concentration (ug/m ³)	Time	15-Min Avg Concentration (ug/m ³)	
7:44	10.7	7:44	57.8	-
7:59	8.7	7:59	46.9	-
8:14	11.5	8:14	23.3	-
8:29	10.4	8:29	21.9	-
8:44	12.2	8:44	18.7	-
8:59	11.9	8:59	25.6	-
9:14	12.1	9:14	58.7	-
9:29	13.4	9:29	33.2	-
9:44	13.9	9:44	25.7	-
9:59	16.2	9:59	22.9	-
10:14	16.2	10:14	19.1	-
10:29	16.7	10:29	20.8	-
10:44	19.0	10:44	22.4	-
10:59	17.3	10:59	27.0	-
11:14	17.1	11:14	24.8	-
11:29	17.4	11:29	19.4	-
11:44	17.9	11:44	19.9	-
11:59	17.9	11:59	22.1	-
12:14	17.9	12:14	20.2	-
12:29	18.6	12:29	18.3	-
12:44	17.4	12:44	27.0	-
12:59	17.8	12:59	22.9	-
13:14	18.6	13:14	28.8	-
13:29	19.2	13:29	20.5	-
13:44	19.2	13:44	21.4	-
13:59	18.4	13:59	21.8	-
14:14	18.0	14:14	27.8	-
14:29	17.8	14:29	23.3	-
14:44	17.5	14:44	16.6	-
14:59	17.6	14:59	42.8	-
15:14	17.8	15:14	65.6	-
15:29	16.7	15:29	32.0	-
15:44	16.1	15:44	25.5	-
15:59	15.5	15:59	17.2	-
16:14	17.0	16:14	21.6	-
16:29	15.5	16:29	22.7	-
16:44	15.2	16:44	19.3	-

Exceedance
Level

160.7

158.7

161.5

160.4

162.2

161.9

162.1

163.4

163.9

166.2

166.2

166.7

169.0

167.3

167.1

167.4

167.9

167.9

167.9

168.6

167.4

167.8

168.6

169.2

169.2

168.4

168.0

167.8

167.5

167.6

167.8

166.7

166.1

165.5

167.0

165.5

165.2

Upwind DustTrak Data Summary		
Daily Maximum	48.3	ug/m ³
Daily Minimum	6.8	ug/m ³
Daily Average	16.0	ug/m ³
Maximum 15-Minute Average	19.2	ug/m ³

Downwind DustTrak Data Summary		
Daily Maximum	195.5	ug/m ³
Daily Minimum	11.0	ug/m ³
Daily Average	27.1	ug/m ³
Maximum 15-Minute Average	65.6	ug/m ³

Tuesday, August 20, 2024				
Number of Instances Where Downwind VOCs Exceeds				0
Number of Comparable Data Points =				0
Start Time:				7:44
End Time:				16:44
PID DATA				
Upwind		Downwind		Exceeds VOC Alarm Limit
Time	15-Min Avg Concentration (ppm)	Time	15-Min Avg Concentration (ppm)	
7:44	0.0	7:44	0.0	-
7:59	0.0	7:59	0.0	-
8:14	0.0	8:14	0.0	-
8:29	0.0	8:29	0.0	-
8:44	0.0	8:44	0.0	-
8:59	0.0	8:59	0.0	-
9:14	0.0	9:14	0.0	-
9:29	0.0	9:29	0.0	-
9:44	0.0	9:44	0.0	-
9:59	0.0	9:59	0.0	-
10:14	0.0	10:14	0.0	-
10:29	0.0	10:29	0.0	-
10:44	0.0	10:44	0.0	-
10:59	0.0	10:59	0.0	-
11:14	0.0	11:14	0.0	-
11:29	0.0	11:29	0.0	-
11:44	0.0	11:44	0.0	-
11:59	0.0	11:59	0.0	-
12:14	0.0	12:14	0.0	-
12:29	0.0	12:29	0.0	-
12:44	0.0	12:44	0.0	-
12:59	0.0	12:59	0.0	-
13:14	0.0	13:14	0.0	-
13:29	0.0	13:29	0.0	-
13:44	0.0	13:44	0.0	-
13:59	0.0	13:59	0.0	-
14:14	0.0	14:14	0.0	-
14:29	0.0	14:29	0.0	-
14:44	0.0	14:44	0.0	-
14:59	0.0	14:59	0.0	-
15:14	0.0	15:14	0.0	-
15:29	0.0	15:29	0.0	-
15:44	0.0	15:44	0.0	-
15:59	0.0	15:59	0.0	-
16:14	0.0	16:14	0.0	-
16:29	0.0	16:29	0.0	-
16:44	0.0	16:44	0.0	-

Exceedance Level

5.0

5.0

5.0

5.0

5.0

5.0

5.0

5.0

5.0

5.0

5.0

5.0

5.0

5.0

5.0

5.0

5.0

5.0

5.0

5.0

5.0

5.0

5.0

5.0

5.0

5.0

5.0

5.0

5.0

5.0

5.0

5.0

5.0

5.0

5.0

Upwind PID Data Summary		
Daily Maximum	0.0	ppm
Daily Minimum	0.0	ppm
Daily Average	0.0	ppm
Maximum 15-Minute Average	0.0	ppm

Downwind PID Data Summary		
Daily Maximum	0.0	ppm
Daily Minimum	0.0	ppm
Daily Average	0.0	ppm
Maximum 15-Minute Average	0.0	ppm

Project:	450 Union Remediation	Project No.:	24-071	Date:	08/20/24
Client:	2201 Union LLC	Location:	Brooklyn, NY	Day of Week:	Tuesday
Owner:	2201 Union LLC	Superintendent:	Rick McKay	Days on Site:	11
Manager:	Trae Deri	Engineer:	Srujan Prasad	Shift Times:	7:00-17:00

Weather:		
Low: 62	Cloud Cover: Sunny	Wind: 10-15MPH
High: 75	Precipitation: 0"	Direction: NW
Description of Work Activities:		
<ul style="list-style-type: none"> - 0700 to 0730, GSI held a tailgate safety meeting and discussed the day's planned activities with site personnel - At 0730, GSI received 1 delivery of slag and 319.6 gallons of dyed diesel fuel. - 0800 to 1200, GSI Pre cleared the column E3 upto 12ftbgs using Kobelco excavator, clearing big pieces of concrete rocks, GSI abandoned the excavation and ISS of column E3 and E4 after discussions with VeKtor and backfilled with spoils. - 1230 to 1630, GSI attempted to excavate the obstruction prior to abandoning the column B3 and B4 for completion at a later date using Kobelco excavator, clearing big pieces of concrete rocks and steel plates. GSI was unsuccessful in removing the obstruction. GSI will relocate and attempt to clear the obstruction during the next shift. - 1630 to 1700, Kobelco excavator backfilled with spoils, fueled equipment and performed general maintenance. - 1715, All GSI personnel offsite. 		
Conversation with Client/Inspector:		
Production Delays:		
GSI attempted to excavate the column E3, B3 and B4 obstruction prior to abandoning the column for completion at a later date.		
Safety Topics:		
Discussed: It can be challenging to truly be present at work. But workplace safety should be a priority.		

Rick McKay
 Foreman/Superintendent

08/20/24
 Date

Project:	450 Union Remediation				Project No.:	24-071		Date:	08/20/24		
Client:	2201 Union LLC				Location:	Brooklyn, NY		Day of Week:	Tuesday		
Owner:	2201 Union LLC				Superintendent:	Rick Mckay		Days on Site:	11		
Manager:	Trae Deri				Engineer:	Srujan Prasad		Shift Times:	7:00-17:00		
Production:						Completion:					
Today: 0.00 CY 0 Columns						5% Columns					
To-Date: 227.34 CY 2 Columns						5.17% CY					
Materials Received:											
Material		Unit		Today		Total		Notes			
Slag- Grade 120		Ton		26		76					
Portland Cement - Type 1L		Ton		0		25					
Hours	Equipment			Task		Hours	Employees On Site			Trade	
	Offroad Forklift			Material Handling			Trae Deri			PM	
	185 Air Compressor			ISS Mixing		10.5	Rick McKay			SUPT	
10.0	Conex box(1)			Storage		10.5	Srujan Prasad			ENG	
2.0	300kw Generator			Batch Plant		10.5	Eric Shannon			DRILL	
2.0	Lo-pro silo(2)			Cement Storage		10.0	Miguel Maldonado			LAB	
	Flash mixers (2)			Batch Plant		8.0	Daniel Oliveira			BPO	
	Moyno pump(2)			Batch Plant		10.5	Peter Liota			OP	
2.0	Delmag Hydraulic Rig			ISS Mixing		8.0	Christopher Ramdial			Oiler	
2.0	Manlift			Maintenance		10.0	Steven Reda			LAB	
10.0	Kobelco Excavaor			ISS Mixing		8.0	Santo Oliveri			OP	
9.0	250kw Generator			Batch Plant							
37	TOTAL DAY HOURS					86	TOTAL DAY HOURS				

LEGEND:

SUPT- Superintendent, **PM**- Project Manager, **ENG** - Engineer, **SSHC** - Health & Safety Coordinator, **LAB** - Laborer, **OP** - Operator,
BPO - Batch plant Operator, **OILER** - Oiler, **DRILLER** - Rig Opeartor

Rick McKay

Foreman/Superintendent

08/20/24

Date



1250 Fifth Avenue, New Kensington, PA 15068
Tel: 724-335-7273 Fax: 724-335-7271
www.geo-solutions.com

IN-SITU SOIL STABILIZATION - AUGER MIXING SLAG DELIVERY INVOICE TRACKING

[illegible]