

DAILY STATUS REPORT

Prepared By: Antonio Cardenas

WEATHER	Snow		Rain		Overcast		Partly Cloudy	X	Bright Sun	
TEMP.	< 32		32-50		50-70	X	70-85	X	>85	

NYSDEC BCP Site No:	C224219	Date:	8/27/2024
Project Name:	450 Union Street, Brooklyn, NY		

Consultant: Vektor Consultants – Antonio Cardenas Visitors: WSP – Monica Puna	Personnel On-Site: Geo-Solutions Inc.- Subcontractor
--	--

Work Activities Performed:

- GSI began pre-clearing the southern portion of the full-scale ISS column locations.
- GSI removed obstructions consisting of concrete and rebar to depths of 10 to 12 feet below grade.
- All stockpiles were placed on poly sheeting and covered by the end of the day.

Community Air Monitoring Program (CAMP)

An Upwind and Downwind CAMP stations were placed within the perimeters of the Site during drilling activities. The Upwind CAMP station was in the northwest portion of the Site and the Downwind CAMP station was in the southeast portion of the Site as the wind was consistently coming from the north.

Background Levels (Initial Readings at Start of Day):

PID: 0.0 ppm Dust: 0.0533 mg/m³

Highest Levels:

PID: 0.1 ppm Dust: 0.0638 mg/m³

- Upwind CAMP was implemented during C&D restaging. CAMP equipment consisted of a DustTrack II Model 8530; S/N: 8530210705, AND MiniRAE 3000, Model PGM-7320 photoionization detector (PID); S/N: 592-601281.
- Downwind CAMP was implemented during C&D restaging. CAMP equipment consisted of a DustTrack II Model 8530; S/N: 8530221304, AND MiniRAE 3000, Model PGM-7320 photoionization detector (PID); S/N:592-926055.
- No VOC or dust concentrations were detected in exceedance of the daily short-term exposure limit (STEL) at the work area CAMP stations.

Problems Encountered

None

Planned Activities for the Next Day

Continued removal of the obstructions within the entire treatment area as per the NYSDEC approval of the Addendum Letter to the Pilot Test Work Plan for ISS. Decommissioning of all groundwater monitoring wells and recovery wells within the work areas via NYSDEC's CP-43 Well Decommissioning Policy.

SITE PLAN WITH LOCATIONS

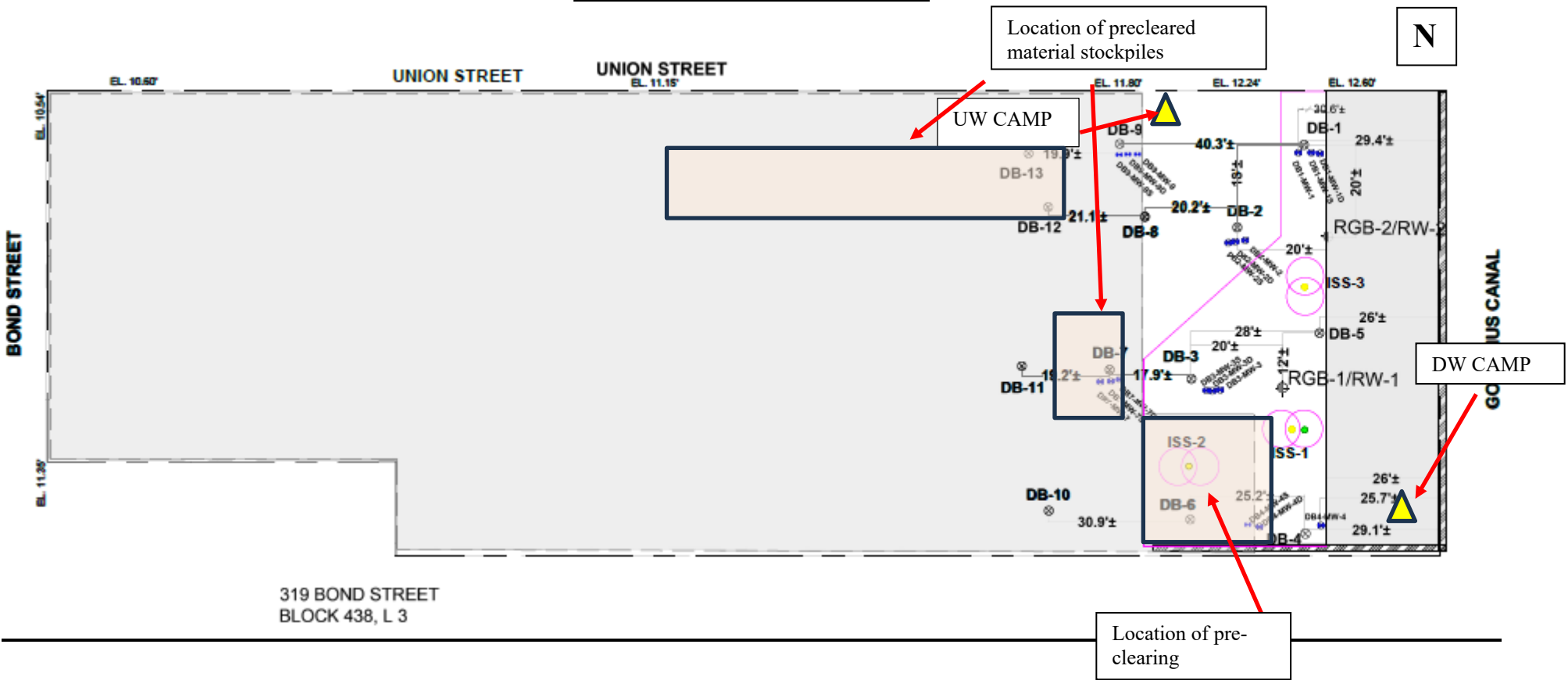


Photo Log

Photo 1:
View of GSI pre-clearing ISS column
location, view facing north.



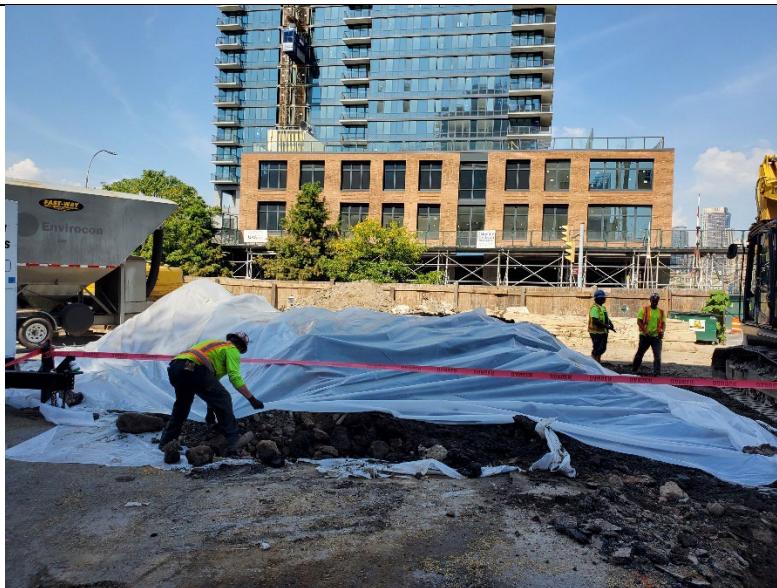
Photo 2:
GSI breaking up concrete
obstructions with hammer
attachment, facing west.



Photo 3:
GSI stockpiling concrete debris in a
separate stockpile, facing west.



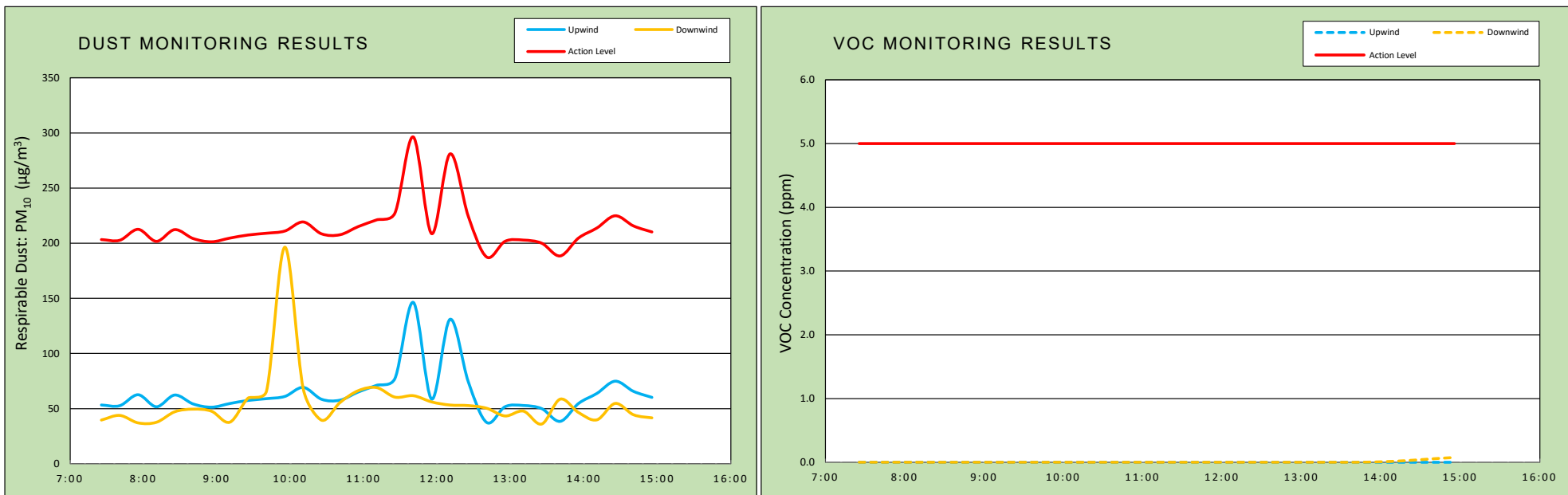
Photo 4:
View of remaining spoils covered with
poly sheeting, facing north.



vEktor consultants 37 W. 37th St, 6th Floor - New York, NY	DAILY AIR MONITORING REPORT 450 Union Street Brooklyn, New York				08/27/2024	
					Rev. No. 0	Page 1 of 2
					Project Number:	
					Dust Action Level	150 $\mu\text{g}/\text{m}^3$
		VOC Action Level	5 ppm			

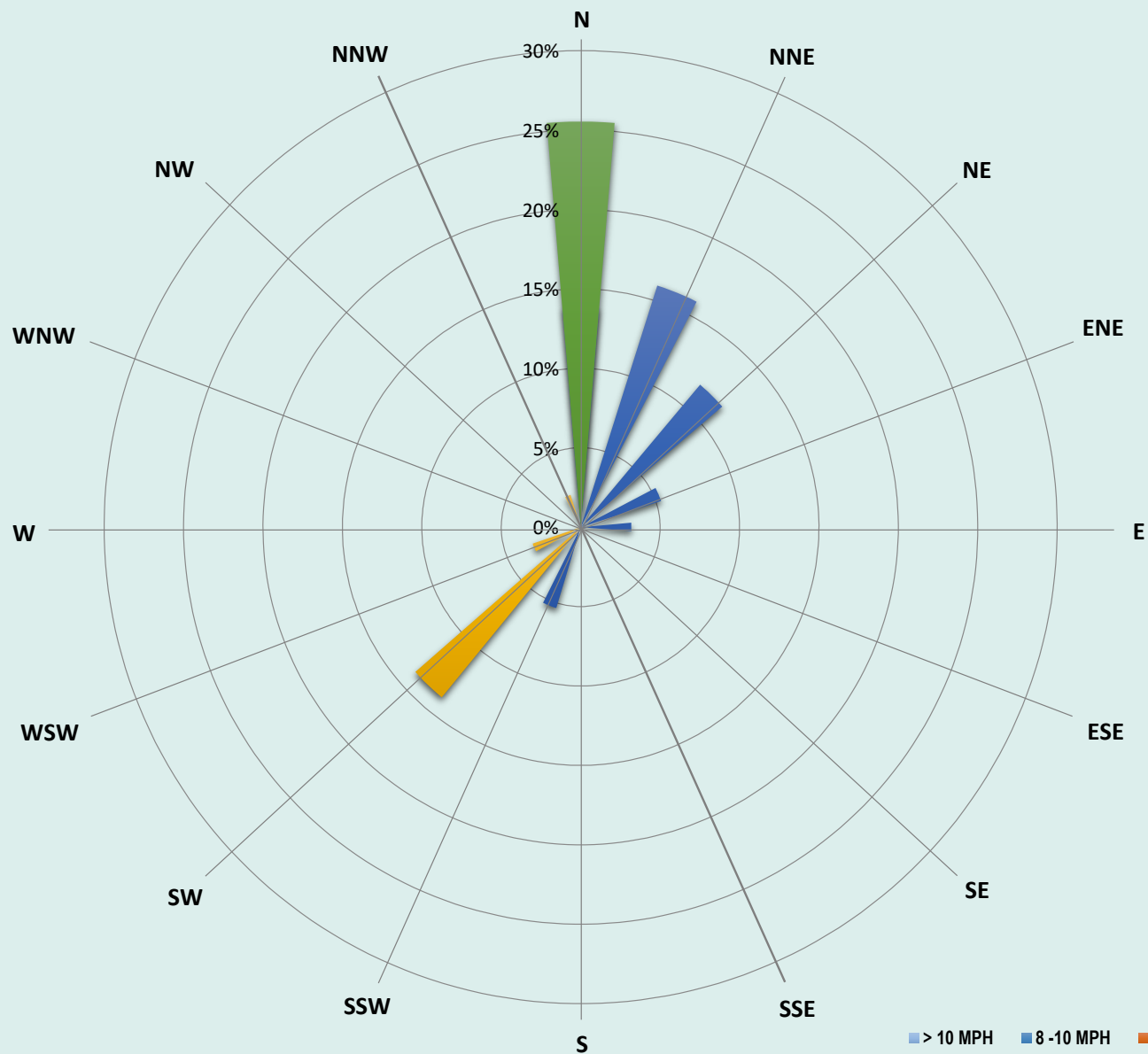
Weather Data Range for Work Day		Wind Direction	N	Relative Humidity (%)	47.0 - 95.0	Daily Rain Total (in)	0.00	Readings in the summary table and graphs below are the reported downwind concentrations.
Temperature (°F)	68.0 - 88.0	Wind Speed (MPH)	0.6 - 4.0	Barometer (inHg)	30.10 - 30.10	Avg. Dew Point Temp (°F)	66.9	

Station Location	Daily Avg. Dust Concentration ($\mu\text{g}/\text{m}^3$)	Max 15-Min Dust Concentration ($\mu\text{g}/\text{m}^3$)	Time of Max Dust Reading	Daily Avg. VOC Concentration (ppm)	Max 15-Min VOC Concentration (ppm)	Time of Max VOC Reading
Upwind	63.8	146.3	11:41	0.0	0.0	13:56
Downwind	55.2	196.4	9:56	0.0	0.1	7:26



Air Monitoring Notes:

Weather Notes:



vEKtor - 450 Union St
Air Monitoring
08/27/24
Wind Speed & Direction
Daily Readings

Tuesday, August 27, 2024				
Number of Instances Where Downwind Particulates				0
Number of Comparable Data Points =				31
Start Time:				7:26
End Time:				14:56
PARTICULATE DATA				
Upwind		Downwind		Exceeds Particulate Alarm Limit
Time	15-Min Avg Concentration (ug/m ³)	Time	15-Min Avg Concentration (ug/m ³)	
7:26	53.3	7:26	39.6	-
7:41	52.6	7:41	43.8	-
7:56	62.6	7:56	37.1	-
8:11	51.7	8:11	37.6	-
8:26	62.3	8:26	47.2	-
8:41	54.2	8:41	49.5	-
8:56	51.3	8:56	47.7	-
9:11	54.6	9:11	37.7	-
9:26	57.4	9:26	59.6	-
9:41	59.0	9:41	66.0	-
9:56	61.1	9:56	196.4	-
10:11	69.3	10:11	67.9	-
10:26	58.5	10:26	39.5	-
10:41	57.7	10:41	55.5	-
10:56	65.1	10:56	66.3	-
11:11	71.1	11:11	69.1	-
11:26	77.4	11:26	60.4	-
11:41	146.3	11:41	61.7	-
11:56	58.6	11:56	56.0	-
12:11	131.0	12:11	53.3	-
12:26	74.1	12:26	52.7	-
12:41	37.4	12:41	50.3	-
12:56	51.7	12:56	43.3	-
13:11	52.8	13:11	47.7	-
13:26	49.9	13:26	36.1	-
13:41	38.4	13:41	58.6	-
13:56	54.7	13:56	46.5	-
14:11	63.8	14:11	39.8	-
14:26	74.9	14:26	54.7	-
14:41	65.6	14:41	44.4	-
14:56	60.2	14:56	41.6	-

Tuesday, August 27, 2024				
Number of Instances Where Downwind VOCs Exceeds				0
Number of Comparable Data Points =				0
Start Time:				7:26
End Time:				14:56
PID DATA				
Upwind		Downwind		Exceeds VOC Alarm Limit
Time	15-Min Avg Concentration (ppm)	Time	15-Min Avg Concentration (ppm)	
7:26	0.0	7:26	0.0	-
7:41	0.0	7:41	0.0	-
7:56	0.0	7:56	0.0	-
8:11	0.0	8:11	0.0	-
8:26	0.0	8:26	0.0	-
8:41	0.0	8:41	0.0	-
8:56	0.0	8:56	0.0	-
9:11	0.0	9:11	0.0	-
9:26	0.0	9:26	0.0	-
9:41	0.0	9:41	0.0	-
9:56	0.0	9:56	0.0	-
10:11	0.0	10:11	0.0	-
10:26	0.0	10:26	0.0	-
10:41	0.0	10:41	0.0	-
10:56	0.0	10:56	0.0	-
11:11	0.0	11:11	0.0	-
11:26	0.0	11:26	0.0	-
11:41	0.0	11:41	0.0	-
11:56	0.0	11:56	0.0	-
12:11	0.0	12:11	0.0	-
12:26	0.0	12:26	0.0	-
12:41	0.0	12:41	0.0	-
12:56	0.0	12:56	0.0	-
13:11	0.0	13:11	0.0	-
13:26	0.0	13:26	0.0	-
13:41	0.0	13:41	0.0	-
13:56	0.0	13:56	0.0	-
14:11	0.0	14:11	0.0	-
14:26	0.0	14:26	0.0	-
14:41	0.0	14:41	0.1	-
14:56	0.0	14:56	0.1	-

Project:	450 Union Remediation	Project No.:	24-071	Date:	08/27/24
Client:	2201 Union LLC	Location:	Brooklyn, NY	Day of Week:	Tuesday
Owner:	2201 Union LLC	Superintendent:	Rick McKay	Days on Site:	16
Manager:	Trae Deri	Engineer:	Srujan Prasad	Shift Times:	7:00-17:00

Weather:			
Low:	77	Cloud Cover:	Sunny
High:	85	Precipitation:	0"
		Wind:	0-5MPH
		Direction:	ENE
Description of Work Activities:			
<ul style="list-style-type: none"> - 0700 to 0730, GSI held a tailgate safety meeting and discussed the day's planned activities with site personnel. - 0430, United rentals was on site to deliver Kobelco 300 excavator. - 0800 to 1430, GSI beginning pre-excavation and concrete/debris removal operations in the Southwest portion of the jobsite using 300 Kobelco excavator, clearing big pieces of concrete rocks and steel plates. GSI will relocate and attempt to clear the obstruction during the next shift. - 0800 to 1400, GSI beginning pre-excavation and concrete/debris removal operations in the Southwest portion of the jobsite using 210 Kobelco excavator and hydraulic hammer. - 0800 to 1400, GSI moved the excavated concrete material towards the West of the jobsite using Kobelco excavator and casted on a poly-lined and stockpile. - 1430 to 1500, Kobelco excavator managed ISS spoils, fueled equipment, washed out lines and performed general maintenance. - 1500, All GSI personnel offsite. 			
Conversation with Client/Inspector:			
Production Delays:			
GSI bwginning pre-excavation the concrete/debris obstruction towards the Southwest of the jobsite using 300 Kobelco excavator and hydraulic hammer with 210 Kobelco excavator.			
Safety Topics:			
Discussed: Heat stress conditions.			

Rick McKay
 Foreman/Superintendent

08/27/24
 Date

Project:	450 Union Remediation	Project No.:	24-071	Date:	08/27/24
Client:	2201 Union LLC	Location:	Brooklyn, NY	Day of Week:	Tuesday
Owner:	2201 Union LLC	Superintendent:	Rick McKay	Days on Site:	16
Manager:	Trae Deri	Engineer:	Srujan Prasad	Shift Times:	7:00-17:00
Production:			Completion:		
Today:	0.00 CY	0 Columns	9% Columns		
To-Date:	455.65 CY	4 Columns	10.36% CY		
Materials Received:					
Material	Unit	Today	Total	Notes	
Slag- Grade 120	Ton	0	76		
Portland Cement - Type 1L	Ton	0	25		
Hours	Equipment	Task	Hours	Employees On Site	Trade
8.0	Offroad Forklift	Material Handling		Trae Deri	PM
8.0	185 Air Compressor	ISS Mixing	10.5	Rick McKay	SUPT
8.0	Conex box(1)	Storage	9.0	Srujan Prasad	ENG
8.0	300kw Generator	Batch Plant	9.0	Eric Shannon	DRILL
8.0	Lo-pro silo(2)	Cement Storage	8.5	Miguel Maldonado	LAB
8.0	Flash mixers (2)	Batch Plant	8.5	Daniel Oliveira	BPO
8.0	Moyno pump(2)	Batch Plant	8.5	Peter Liota	OP
8.0	Delmag Hydraulic Rig	ISS Mixing	8.5	Steven Reda	LAB
8.0	Manlift(1)	Maintenance			
8.0	Kobelco 210 Excavaor	ISS Mixing			
8.0	250kw Generator	Batch Plant			
8.0	Kobelco 300 Excavator				
96	TOTAL DAY HOURS		63	TOTAL DAY HOURS	

LEGEND:

SUPT- Superintendent, **PM**- Project Manager, **ENG** - Engineer, **SSHC** - Health & Safety Coordinator, **LAB** - Laborer, **OP** - Operator, **BPO** - Batch plant Operator, **OILER** - Oiler, **DRILLER** - Rig Opeartor

Rick McKay

Foreman/Superintendent

08/27/24

Date