

DAILY STATUS REPORT

Prepared By: Antonio Cardenas

WEATHER	Snow		Rain		Overcast	X	Partly Cloudy	X	Bright Sun	
TEMP.	< 32		32-50		50-70	X	70-85	X	>85	

NYSDEC BCP Site No:	C224219	Date:	8/29/2024
Project Name:	450 Union Street, Brooklyn, NY		

Consultant: Vektor Consultants – Antonio Cardenas Visitors: WSP – Monica Puna	Personnel On-Site: Geo-Solutions Inc.- Subcontractor
--	--

Work Activities Performed:

- GSI continued decommissioning wells DB3-MW-3S, DB4-MW-4S, DB4-MW-4D, and DB4-MW-4. Wells were grouted and then pulled to the extent feasible. 15 feet of casing was removed from DB3-MW-3S and DB4-MW-4S, 15 feet of casing was removed for DB4-MW-4D, and 7 feet of casing was removed for DB4-MW-4.
- GSI continued pre-clearing ISS locations.
- Vektor documented the decommissioning of wells utilizing NYSDEC's Well Decommissioning Record logs to ensure all work conducted was in accordance with NYSDEC's CP-43 Well Decommissioning Policy.

Community Air Monitoring Program (CAMP)

An Upwind and Downwind CAMP stations were placed within the perimeters of the Site during drilling activities. The Upwind CAMP station was in the northwest portion of the Site and the Downwind CAMP station was in the southeast portion of the Site as the wind was consistently coming from the east.

Background Levels (Initial Readings at Start of Day):

PID: 0.0 ppm Dust: 0.0161 mg/m³

Highest Levels:

PID: 0.0 ppm Dust: 0.0453 mg/m³

- Upwind CAMP was implemented during C&D restaging. CAMP equipment consisted of a DustTrack II Model 8530; S/N: 8530210705, AND MiniRAE 3000, Model PGM-7320 photoionization detector (PID); S/N: 592-601281.
- Downwind CAMP was implemented during C&D restaging. CAMP equipment consisted of a DustTrack II Model 8530; S/N: 8530221304, AND MiniRAE 3000, Model PGM-7320 photoionization detector (PID); S/N:592-926055.
- No VOC or dust concentrations were detected in exceedance of the daily short-term exposure limit (STEL) at the work area CAMP stations.

Problems Encountered

Well casings that sheared or snapped during casing pulling will be relocated and pulling reattempted, to the extent feasible, prior to ISS work.

Planned Activities for the Next Day

Continued removal of the obstructions within the entire treatment area as per the NYSDEC approval of the Addendum Letter to the Pilot Test Work Plan for ISS. Continued decommissioning of all groundwater monitoring wells and recovery wells within the work areas via NYSDEC's CP-43 Well Decommissioning Policy. Setup of Site for confirmation coring for next week.

SITE PLAN WITH LOCATIONS

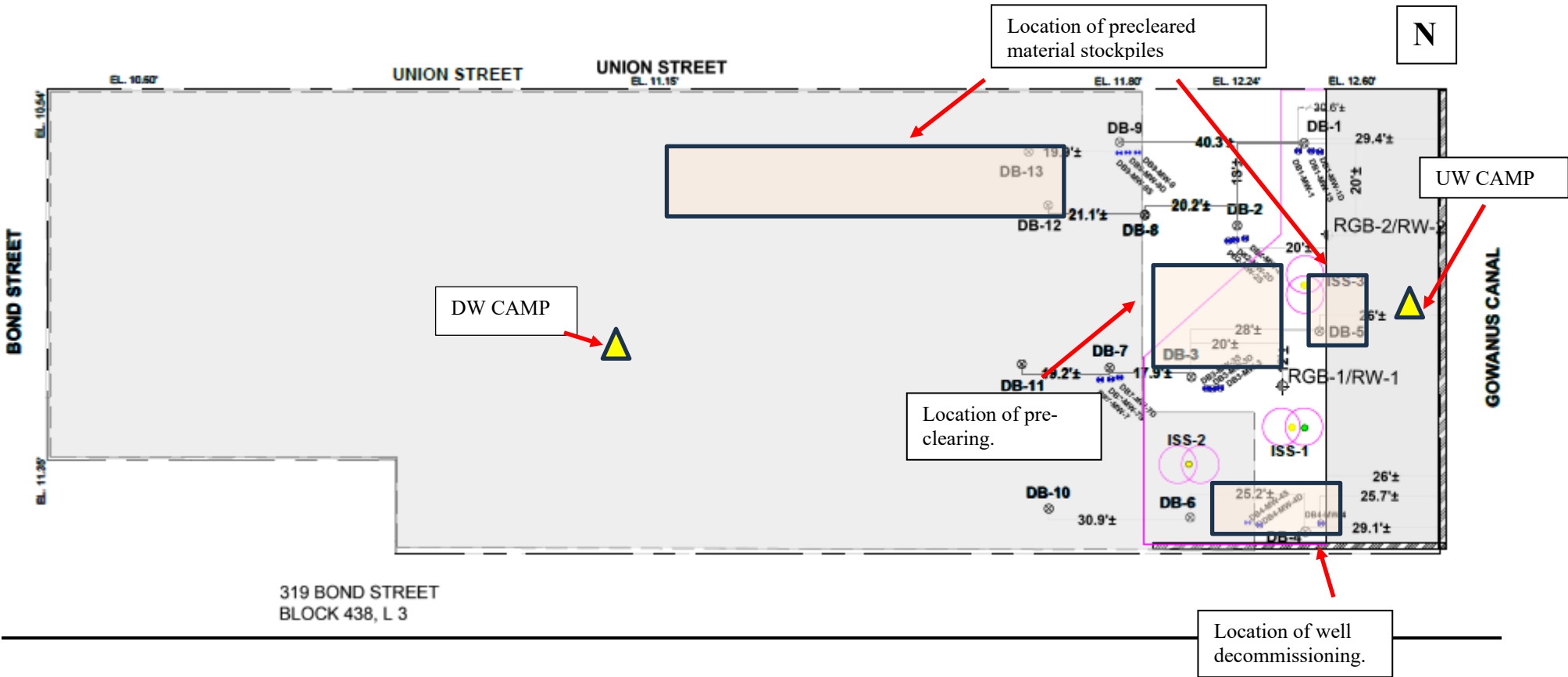


Photo Log

Photo 1:
View of GSI introducing grout for the
DB4-MW cluster, view facing west.

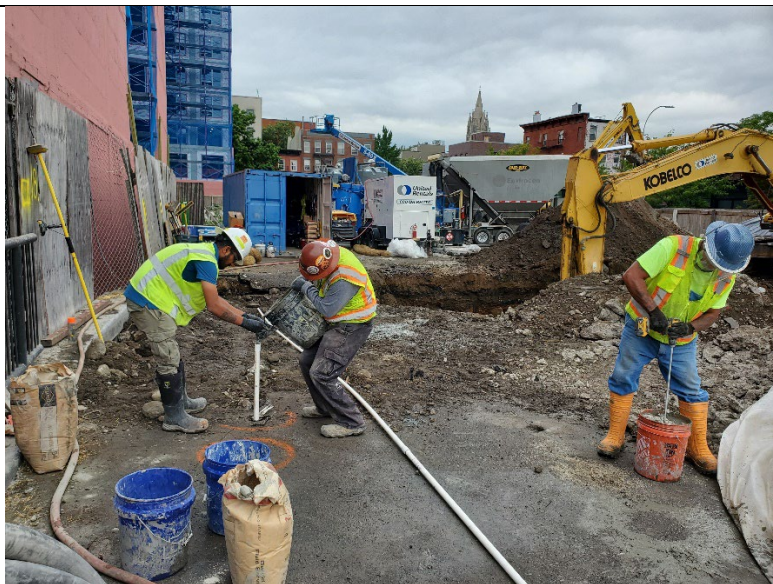


Photo 2:
GSI pulling DB4-MW-4, view facing
south.



Photo 3:
View of pulled well casings and
tremies placed on plastic, view facing
south.



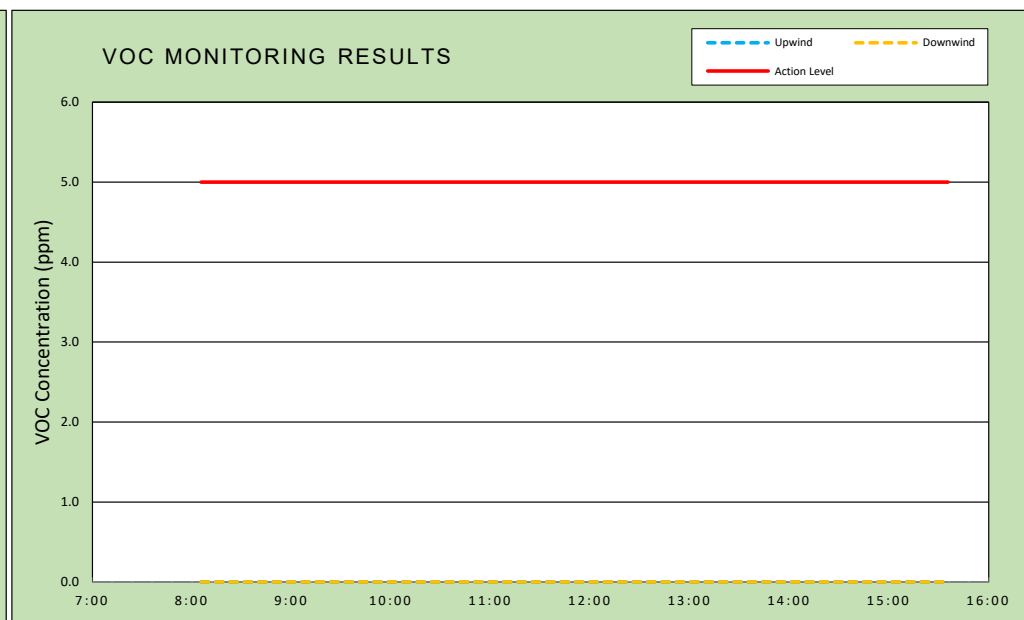
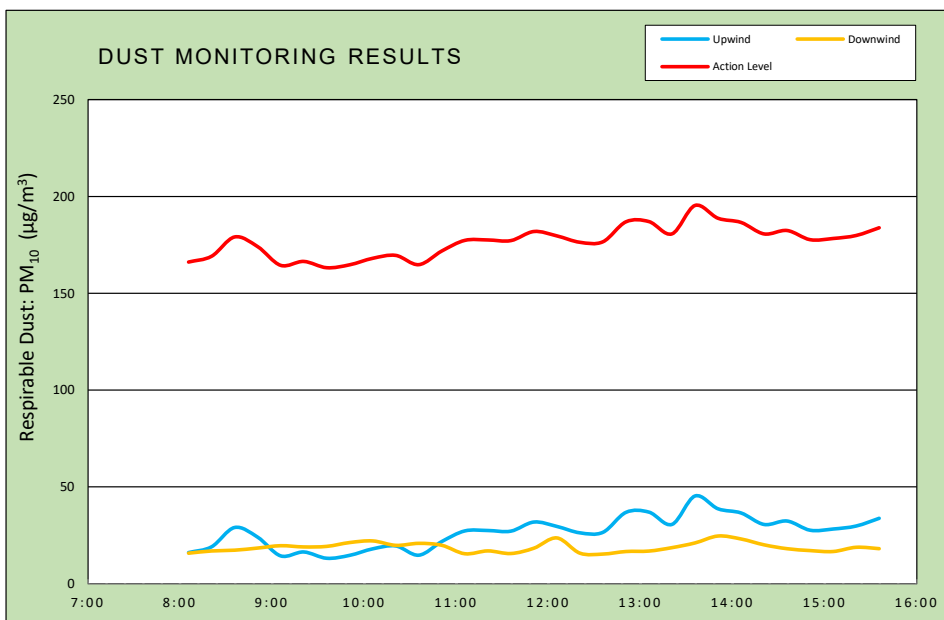
Photo 4:
View of GSI pre-clearing ISS
locations, view facing west.



vEKtor consultants	DAILY AIR MONITORING REPORT 450 Union Street Brooklyn, New York	08/29/2024	
		Rev. No. 0	Page 1 of 2
		Project Number:	
		Dust Action Level	150 µg/m ³
37 W. 37th St, 6th Floor - New York, NY		VOC Action Level	5 ppm

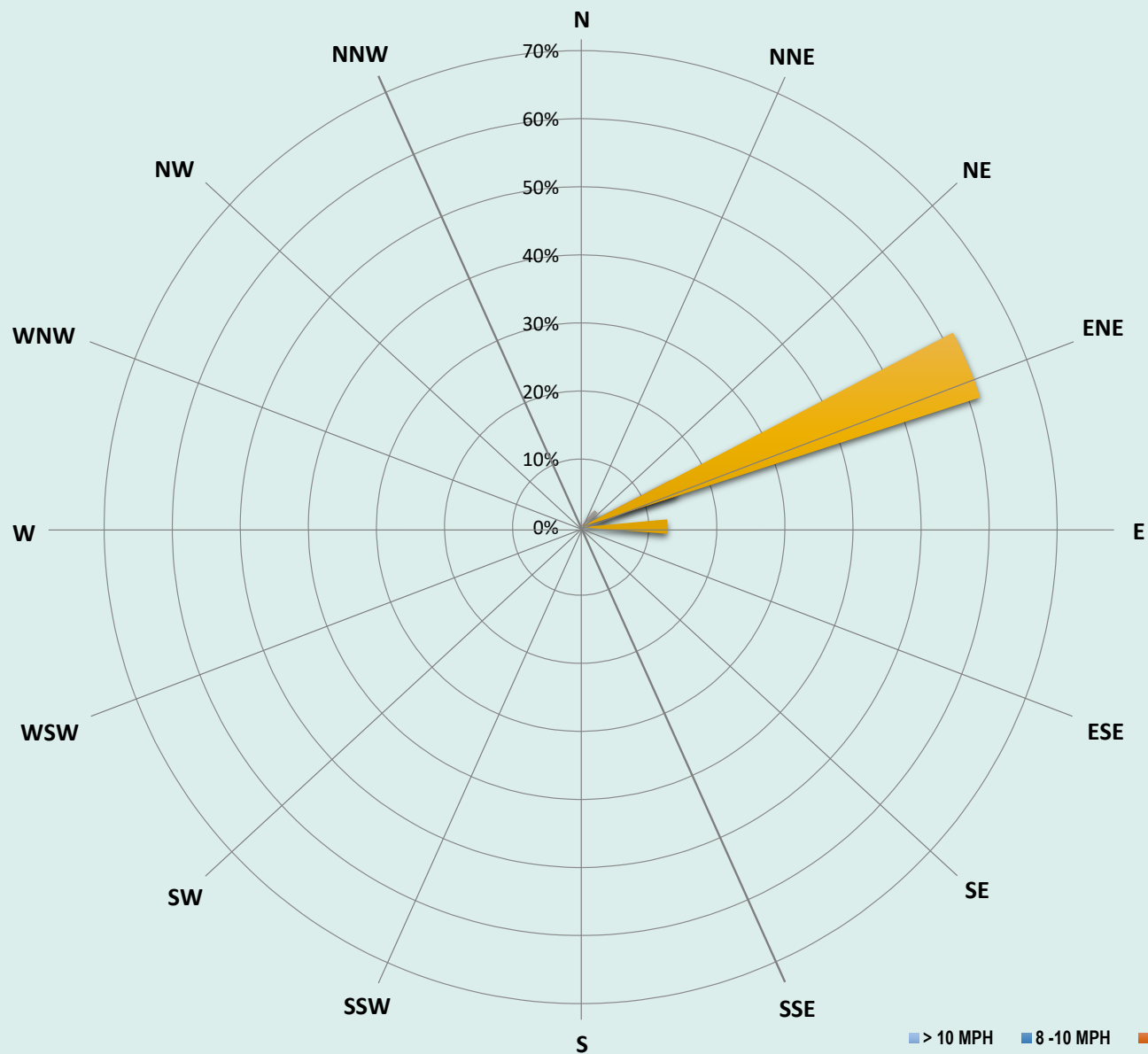
Weather Data Range for Work Day		Wind Direction	ENE	Relative Humidity (%)	59.0 - 76.0	Daily Rain Total (in)	0.01	Readings in the summary table and graphs below are the reported downwind concentrations.
Temperature (°F)	71.0 - 80.0	Wind Speed (MPH)	2.7 - 7.0	Barometer (inHg)	30.20 - 30.20	Avg. Dew Point Temp (°F)	65.3	

Station Location	Daily Avg. Dust Concentration ($\mu\text{g}/\text{m}^3$)	Max 15-Min Dust Concentration ($\mu\text{g}/\text{m}^3$)	Time of Max Dust Reading	Daily Avg. VOC Concentration (ppm)	Max 15-Min VOC Concentration (ppm)	Time of Max VOC Reading
Upwind	26.6	45.3	13:36	0.0	0.0	8:06
Downwind	18.8	24.7	13:51	0.0	0.0	8:06



Air Monitoring Notes:

Weather Notes:



vEKtor - 450 Union St
Air Monitoring
08/29/24
Wind Speed & Direction
Daily Readings

Thursday, August 29, 2024				
Number of Instances Where Downwind Particulates				0
Number of Comparable Data Points =				31
Start Time:				8:06
End Time:				15:36
PARTICULATE DATA				
Upwind		Downwind		Exceeds Particulate Alarm Limit
Time	15-Min Avg Concentration (ug/m ³)	Time	15-Min Avg Concentration (ug/m ³)	
8:06	16.1	8:06	15.8	-
8:21	19.1	8:21	17.0	-
8:36	29.1	8:36	17.4	-
8:51	24.1	8:51	18.5	-
9:06	14.4	9:06	19.7	-
9:21	16.4	9:21	19.0	-
9:36	13.2	9:36	19.3	-
9:51	14.7	9:51	21.3	-
10:06	18.1	10:06	22.1	-
10:21	19.6	10:21	19.9	-
10:36	14.8	10:36	20.9	-
10:51	21.8	10:51	19.9	-
11:06	27.3	11:06	15.5	-
11:21	27.5	11:21	17.0	-
11:36	27.2	11:36	15.6	-
11:51	31.9	11:51	18.4	-
12:06	29.6	12:06	23.7	-
12:21	26.3	12:21	15.8	-
12:36	26.6	12:36	15.4	-
12:51	36.9	12:51	16.7	-
13:06	37.0	13:06	16.9	-
13:21	30.7	13:21	18.7	-
13:36	45.3	13:36	21.1	-
13:51	38.7	13:51	24.7	-
14:06	36.6	14:06	23.1	-
14:21	30.6	14:21	20.1	-
14:36	32.4	14:36	18.1	-
14:51	27.7	14:51	17.2	-
15:06	28.3	15:06	16.7	-
15:21	29.8	15:21	18.9	-
15:36	33.8	15:36	18.1	-

Thursday, August 29, 2024				
Number of Instances Where Downwind VOCs Exceeds				0
Number of Comparable Data Points =				0
Start Time:				8:06
End Time:				15:36
PID DATA				
Upwind		Downwind		Exceeds VOC Alarm Limit
Time	15-Min Avg Concentration (ppm)	Time	15-Min Avg Concentration (ppm)	
8:06	0.0	8:06	0.0	-
8:21	0.0	8:21	0.0	-
8:36	0.0	8:36	0.0	-
8:51	0.0	8:51	0.0	-
9:06	0.0	9:06	0.0	-
9:21	0.0	9:21	0.0	-
9:36	0.0	9:36	0.0	-
9:51	0.0	9:51	0.0	-
10:06	0.0	10:06	0.0	-
10:21	0.0	10:21	0.0	-
10:36	0.0	10:36	0.0	-
10:51	0.0	10:51	0.0	-
11:06	0.0	11:06	0.0	-
11:21	0.0	11:21	0.0	-
11:36	0.0	11:36	0.0	-
11:51	0.0	11:51	0.0	-
12:06	0.0	12:06	0.0	-
12:21	0.0	12:21	0.0	-
12:36	0.0	12:36	0.0	-
12:51	0.0	12:51	0.0	-
13:06	0.0	13:06	0.0	-
13:21	0.0	13:21	0.0	-
13:36	0.0	13:36	0.0	-
13:51	0.0	13:51	0.0	-
14:06	0.0	14:06	0.0	-
14:21	0.0	14:21	0.0	-
14:36	0.0	14:36	0.0	-
14:51	0.0	14:51	0.0	-
15:06	0.0	15:06	0.0	-
15:21	0.0	15:21	0.0	-
15:36	0.0	15:36	0.0	-

Project:	450 Union Remediation	Project No.:	24-071	Date:	08/29/24
Client:	2201 Union LLC	Location:	Brooklyn, NY	Day of Week:	Thursday
Owner:	2201 Union LLC	Superintendent:	Rick McKay	Days on Site:	18
Manager:	Trae Deri	Engineer:	Srujan Prasad	Shift Times:	7:00-17:00

Weather:			
Low:	69	Cloud Cover:	Sunny
High:	80	Precipitation:	0"
		Wind:	5-10MPH
		Direction:	ESE
Description of Work Activities:			
<ul style="list-style-type: none"> - 0700 to 0730, GSI held a tailgate safety meeting and discussed the day's planned activities with site personnel. - 0800 to 0930, GSI Began to prepare grout mixture to the Monitoring wells using Type I Portland cement, Bentonite and water filled them with grout mixture. - 0930 to 1000, GSI started decommissioning Monitoring well DB-4-MW-4S towards the southwest portion of the jobsite. - 1000 to 1200, GSI started decommissioning Monitoring wells DB4-MW-4D and DB4-MW-4 As much as it was feasible towards the southwest portion of the jobsite. - 0800 to 1200, GSI beginning pre-excavation and concrete/debris removal operations in the Northwest portion of the jobsite using 300 Kobelco excavator, clearing big pieces of concrete rocks and steel plates. GSI was successful in removing the obstruction. - 0800 to 1530, GSI moved the excavated concrete material towards the West of the jobsite using Kobelco excavator and casted on a poly-lined and stockpile. - 1430 to 1530, Kobelco excavator managed ISS spoils, fueled equipment and performed general maintenance. - 1600, All GSI personnel offsite. 			
Conversation with Client/Inspector:			
Production Delays:			
GSI beginning pre-excavation and concrete/debris removal operations in the Northwest portion of the jobsite using 300 Kobelco excavator, clearing big pieces of concrete rocks and steel plates. GSI was successful in removing the obstruction.			
Safety Topics:			
Discussed: Heavy Equipment Operation Safety Talk.			

Rick McKay
 Foreman/Superintendent

08/29/24
 Date

Project:	450 Union Remediation	Project No.:	24-071	Date:	08/29/24
Client:	2201 Union LLC	Location:	Brooklyn, NY	Day of Week:	Thursday
Owner:	2201 Union LLC	Superintendent:	Rick McKay	Days on Site:	18
Manager:	Trae Deri	Engineer:	Srujan Prasad	Shift Times:	7:00-17:00
Production:			Completion:		
Today:	0.00 CY	0 Columns	9% Columns		
To-Date:	455.65 CY	4 Columns	10.36% CY		
Materials Received:					
Material	Unit	Today	Total	Notes	
Slag- Grade 120	Ton	0	76		
Portland Cement - Type 1L	Ton	0	25		
Hours	Equipment	Task	Hours	Employees On Site	Trade
9.0	Offroad Forklift	Material Handling	9.5	Trae Deri	PM
9.0	185 Air Compressor	ISS Mixing	8.0	Rick McKay	SUPT
9.0	Conex box(1)	Storage	9.5	Srujan Prasad	ENG
9.0	300kw Generator	Batch Plant	8.0	Eric Shannon	DRILL
9.0	Lo-pro silo(2)	Cement Storage	9.0	Miguel Maldonado	LAB
9.0	Flash mixers (2)	Batch Plant		Daniel Oliveira	BPO
9.0	Moyno pump(2)	Batch Plant	9.0	Peter Liota	OP
9.0	Delmag Hydraulic Rig	ISS Mixing	9.0	Steven Reda	LAB
9.0	Manlift(1)	Maintenance			
9.0	Kobelco 210 Excavaor	ISS Mixing			
9.0	250kw Generator	Batch Plant			
9.0	Kobelco 300 Excavator				
108	TOTAL DAY HOURS		62	TOTAL DAY HOURS	

LEGEND:

SUPT- Superintendent, **PM**- Project Manager, **ENG** - Engineer, **SSHC** - Health & Safety Coordinator, **LAB** - Laborer, **OP** - Operator, **BPO** - Batch plant Operator, **OILER** - Oiler, **DRILLER** - Rig Opeartor

Rick McKay

Foreman/Superintendent

08/29/24

Date