

DAILY STATUS REPORT

Prepared By: Antonio Cardenas

WEATHER	Snow		Rain		Overcast		Partly Cloudy		Bright Sun	X
TEMP.	< 32		32-50		50-70	X	70-85	X	>85	

NYSDEC BCP Site No:	C224219	Date:	9/3/2024
Project Name:	450 Union Street, Brooklyn, NY		

Consultant: Vektor Consultants – Antonio Cardenas and Tom Giordano Visitors: NYSDEC – Meghan Medwid, Becky Kerrigan and Tracy Garland WSP – Aaron Schmidt	Personnel On-Site: Geo-Solutions Inc.- Subcontractor Coastal Environmental Solutions Inc.- Subcontractor
---	---

Work Activities Performed:

- GSI chopped concrete debris with the hammer attachment and utilized fresh water to suppress dust, as needed.
- Coastal Environmental drilled three confirmation cores for visual inspection as follows per the approved Pilot Test Work Plan:
 - One confirmation core was collected from the overlapped areas between the two 9% mix columns;
 - One confirmation core was collected from the middle of a 9% column (the mix with the least cement addition); and
 - One confirmation core was collected from the overlapped areas between the two 12% mix columns.
- Visual inspections were conducted for the retrieved core sample from ISS-2C down to 40 feet below grade surface (bgs) and from ISS-2S between 25' to 40' bgs. ISS-3C was only drilled down to 35' bgs due to refusal. Visual inspection was conducted for the retrieved core sample from ISS-3C down to 35' bgs. Free product was observed within sand in the 30-35 foot interval from ISS-3C.

Community Air Monitoring Program (CAMP)

An Upwind and Downwind CAMP stations were placed within the perimeters of the Site during drilling activities. The Upwind CAMP station was in the northwest portion of the Site and the Downwind CAMP station was in the southeast portion of the Site as the wind was consistently coming from the east.

Background Levels (Initial Readings at Start of Day):

PID: 0.0 ppm Dust: 0.0116 mg/m³

Highest Levels:

PID: 0.0 ppm Dust: 0.0784 mg/m³

- Upwind CAMP was implemented during C&D restaging. CAMP equipment consisted of a DustTrack II Model 8530; S/N: 8530210705, AND MiniRAE 3000, Model PGM-7320 photoionization detector (PID); S/N: 592-601281.
- Downwind CAMP was implemented during C&D restaging. CAMP equipment consisted of a DustTrack II Model 8530; S/N: 8530221304, AND MiniRAE 3000, Model PGM-7320 photoionization detector (PID); S/N: 592-926055.
- No VOC or dust concentrations were detected in exceedance of the daily short-term exposure limit (STEL) at the work area CAMP stations.

Problems Encountered

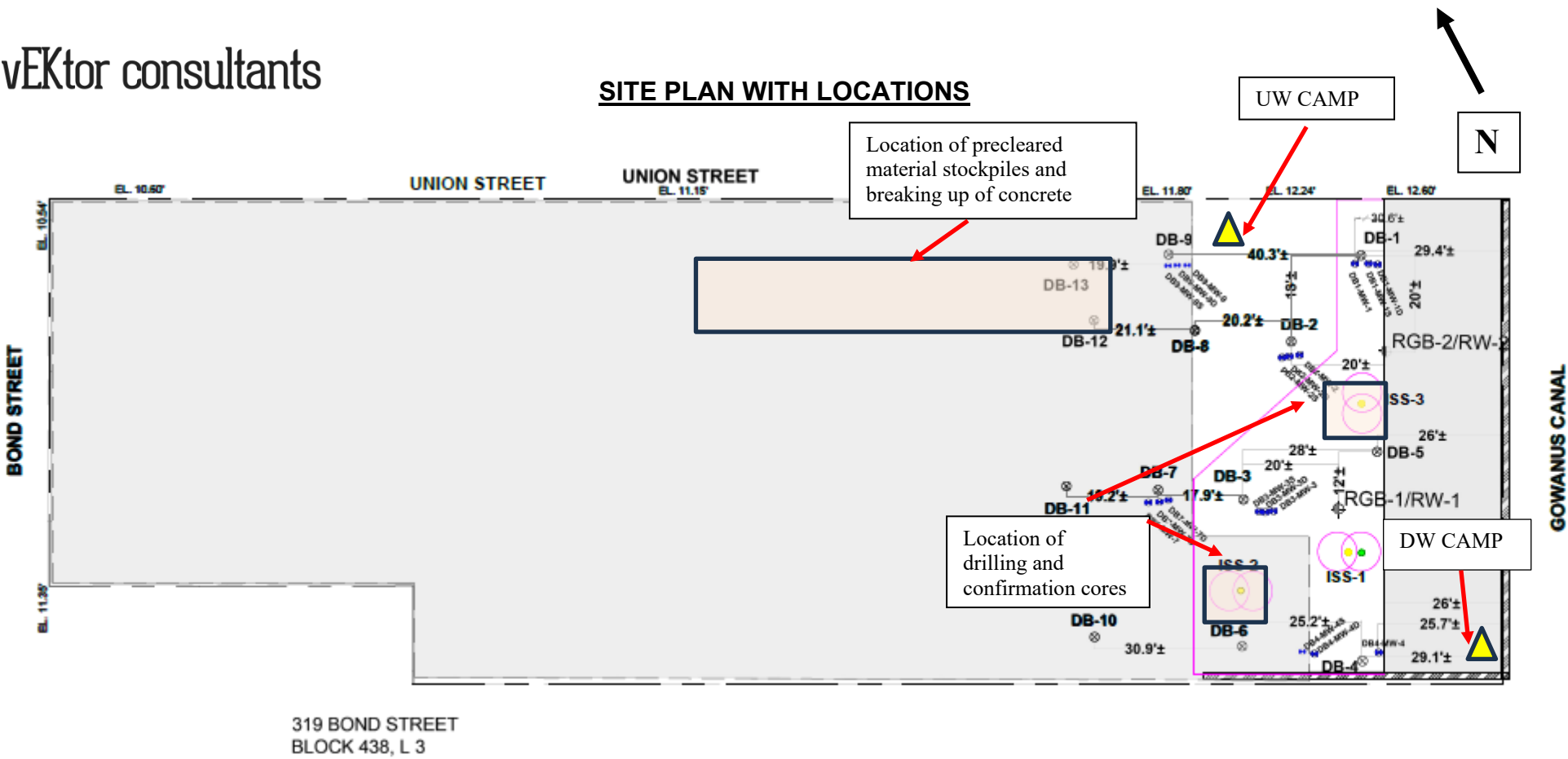
- Between 12:40 and 14:55, the downwind PID was not recording due to data transmission issues. Vektor

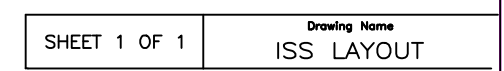
was able to troubleshoot the issue and the PID recorded data for the remainder of the workday.

Planned Activities for the Next Day

Continued removal of the obstructions within the entire treatment area as per the NYSDEC approval of the Addendum Letter to the Pilot Test Work Plan for ISS. Continued decommissioning of all groundwater monitoring wells and recovery wells within the work areas via NYSDEC's CP-43 Well Decommissioning Policy. Submission of the RSO Work Plan for the full ISS scope of work pending receipt of the reagent mix wet sample analytical results.

SITE PLAN WITH LOCATIONS





- Previously completed Columns
- Columns completed today
- Sampled Columns
- Obstructed Columns

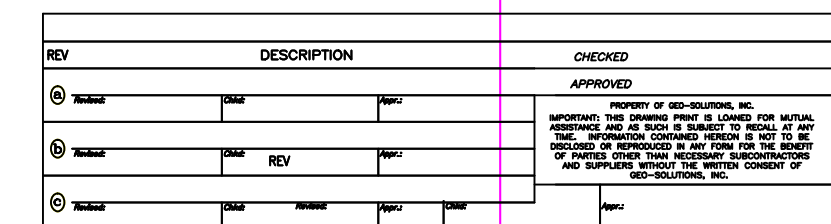


Photo Log

Photo 1:
View of Coastal drilling ISS-2S, view facing south.

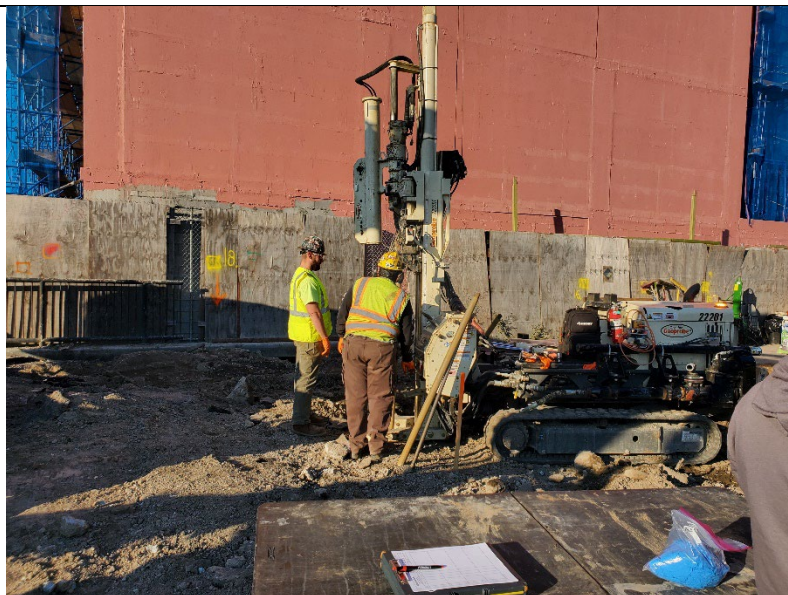


Photo 2:
View of confirmation cores for ISS-2S from 25 to 40 feet for visual inspection.



Photo 3:
View of confirmation cores for ISS-2C from 20 to 40 feet for visual inspection.



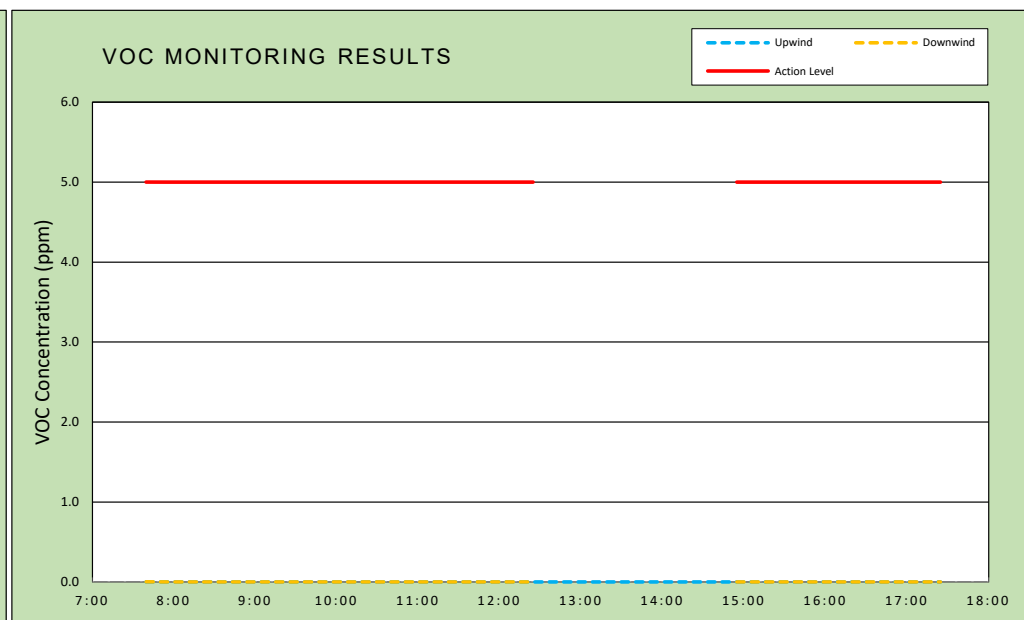
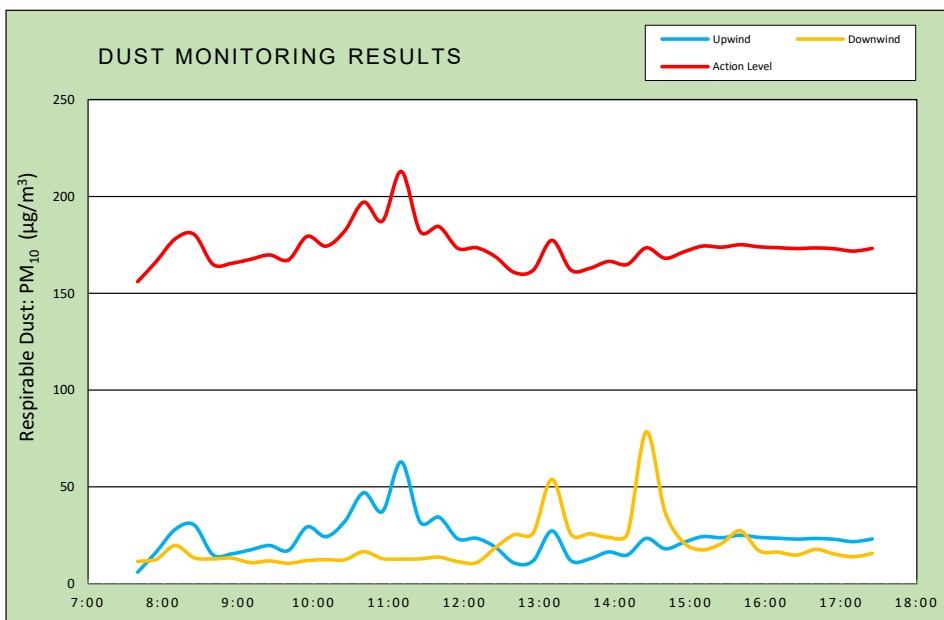
Photo 4:
View of confirmation cores from ISS-
3C from 20 to 35 feet for visual
inspection.



vEKtor consultants	DAILY AIR MONITORING REPORT 450 Union Street Brooklyn, New York	09/03/2024	
		Rev. No. 0	Page 1 of 2
		Project Number:	
		Dust Action Level	150 µg/m ³
37 W. 37th St, 6th Floor - New York, NY		VOC Action Level	5 ppm

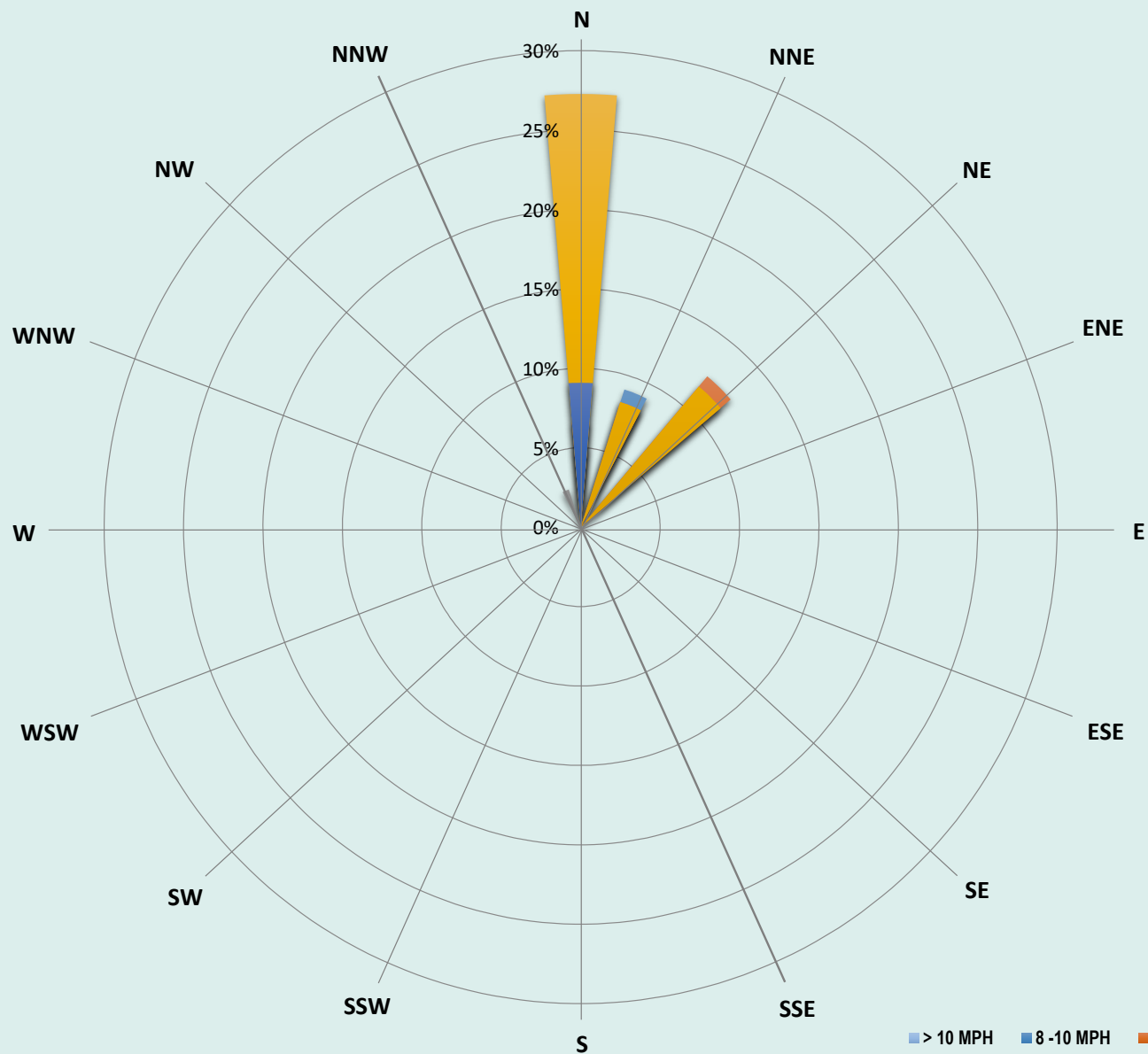
Weather Data Range for Work Day		Wind Direction	N	Relative Humidity (%)	28.0 - 63.0	Daily Rain Total (in)	0.00	Readings in the summary table and graphs below are the reported downwind concentrations.
Temperature (°F)	60.0 - 77.0	Wind Speed (MPH)	1.8 - 8.5	Barometer (inHg)	30.30 - 30.40	Avg. Dew Point Temp (°F)	43.6	

Station Location	Daily Avg. Dust Concentration ($\mu\text{g}/\text{m}^3$)	Max 15-Min Dust Concentration ($\mu\text{g}/\text{m}^3$)	Time of Max Dust Reading	Daily Avg. VOC Concentration (ppm)	Max 15-Min VOC Concentration (ppm)	Time of Max VOC Reading
Upwind	23.4	62.9	11:10	0.0	0.0	7:40
Downwind	19.6	78.4	14:25	0.0	0.0	8:25



Air Monitoring Notes:

Weather Notes:



vEKtor - 450 Union St
Air Monitoring
09/03/24
Wind Speed & Direction
Daily Readings

■ > 10 MPH ■ 8-10 MPH ■ 6-8 MPH ■ 4-6 MPH ■ 2-4 MPH ■ 1-2 MPH ■ Calm

Tuesday, September 3, 2024				
Number of Instances Where Downwind Particulates				0
Number of Comparable Data Points =				40
Start Time:				7:40
End Time:				17:25
PARTICULATE DATA				
Upwind		Downwind		Exceeds Particulate Alarm Limit
Time	15-Min Avg Concentration (ug/m ³)	Time	15-Min Avg Concentration (ug/m ³)	
7:40	6.0	7:40	11.6	-
7:55	16.5	7:55	12.7	-
8:10	28.1	8:10	19.8	-
8:25	30.4	8:25	13.4	-
8:40	14.9	8:40	12.9	-
8:55	15.5	8:55	13.3	-
9:10	17.6	9:10	10.9	-
9:25	19.8	9:25	11.8	-
9:40	17.2	9:40	10.6	-
9:55	29.4	9:55	12.0	-
10:10	24.3	10:10	12.4	-
10:25	32.2	10:25	12.4	-
10:40	47.0	10:40	16.6	-
10:55	37.3	10:55	13.0	-
11:10	62.9	11:10	12.8	-
11:25	31.9	11:25	12.9	-
11:40	34.4	11:40	13.8	-
11:55	23.2	11:55	11.5	-
12:10	23.5	12:10	10.9	-
12:25	18.9	12:25	18.7	-
12:40	10.7	12:40	25.4	-
12:55	11.9	12:55	26.3	-
13:10	27.3	13:10	54.0	-
13:25	12.0	13:25	25.7	-
13:40	12.9	13:40	25.8	-
13:55	16.4	13:55	24.0	-
14:10	14.9	14:10	25.7	-
14:25	23.5	14:25	78.4	-
14:40	18.1	14:40	37.2	-
14:55	21.4	14:55	21.2	-
15:10	24.4	15:10	17.6	-
15:25	23.8	15:25	20.9	-
15:40	25.1	15:40	27.4	-
15:55	24.0	15:55	17.0	-
16:10	23.5	16:10	16.4	-
16:25	23.1	16:25	14.8	-
16:40	23.4	16:40	17.8	-
16:55	23.0	16:55	15.4	-
17:10	21.8	17:10	14.0	-
17:25	23.1	17:25	15.7	-

Tuesday, September 3, 2024				
Number of Instances Where Downwind VOCs Exceeds				0
Number of Comparable Data Points =				0
Start Time:				7:40
End Time:				17:25
PID DATA				
Upwind		Downwind		Exceeds VOC Alarm Limit
Time	15-Min Avg Concentration (ppm)	Time	15-Min Avg Concentration (ppm)	
7:40	0.0	7:40	0.0	-
7:55	0.0	7:55	0.0	-
8:10	0.0	8:10	0.0	-
8:25	0.0	8:25	0.0	-
8:40	0.0	8:40	0.0	-
8:55	0.0	8:55	0.0	-
9:10	0.0	9:10	0.0	-
9:25	0.0	9:25	0.0	-
9:40	0.0	9:40	0.0	-
9:55	0.0	9:55	0.0	-
10:10	0.0	10:10	0.0	-
10:25	0.0	10:25	0.0	-
10:40	0.0	10:40	0.0	-
10:55	0.0	10:55	0.0	-
11:10	0.0	11:10	0.0	-
11:25	0.0	11:25	0.0	-
11:40	0.0	11:40	0.0	-
11:55	0.0	11:55	0.0	-
12:10	0.0	12:10	0.0	-
12:25	0.0	12:25	0.0	-
12:40	0.0	12:40	-	-
12:55	0.0	12:55	-	-
13:10	0.0	13:10	-	-
13:25	0.0	13:25	-	-
13:40	0.0	13:40	-	-
13:55	0.0	13:55	-	-
14:10	0.0	14:10	-	-
14:25	0.0	14:25	-	-
14:40	0.0	14:40	-	-
14:55	0.0	14:55	0.0	-
15:10	0.0	15:10	0.0	-
15:25	0.0	15:25	0.0	-
15:40	0.0	15:40	0.0	-
15:55	0.0	15:55	0.0	-
16:10	0.0	16:10	0.0	-
16:25	0.0	16:25	0.0	-
16:40	0.0	16:40	0.0	-
16:55	0.0	16:55	0.0	-
17:10	0.0	17:10	0.0	-
17:25	0.0	17:25	0.0	-

Project:	450 Union Remediation	Project No.:	24-071	Date:	09/03/24
Client:	2201 Union LLC	Location:	Brooklyn, NY	Day of Week:	Tuesday
Owner:	2201 Union LLC	Superintendent:	Rick McKay	Days on Site:	20
Manager:	Trae Deri	Engineer:	Srujan Prasad	Shift Times:	7:00-17:00

Weather:			
Low:	59	Cloud Cover:	Sunny
High:	75	Precipitation:	0"
		Wind:	5-10MPH
		Direction:	ENE
Description of Work Activities:			
<ul style="list-style-type: none"> - 0700 to 0730, GSI held a tailgate safety meeting and discussed the day's planned activities with site personnel. - 0730 to 1130, Drill coring began to core column B3/B4. following the completion of core hole the drill rig broke down. - 1130 to 1330, Coring operation were paused to address the mechanical issue with the drill rig. - 0730 to 1430, GSI used 210 Kobelco excavator and hydraulic hammer to size existing concrete pile. - 1430 to 1730, Began coring E6/E7 ceased per an obstruction at 35ftbgs and coring was terminated at the same depth. - 1430 to 1500, Kobelco excavator managed ISS spoils, fueled equipment and performed general maintenance. - 1730, All GSI personnel offsite. 			
e			
Production Delays:			
GSI continued pre-excavation and concrete/debris removal operations in the Northwest portion of the jobsite using 300 Kobelco excavator, clearing big pieces of concrete rocks and steel plates. GSI was successful in removing the obstruction.			
Safety Topics:			
Discussed: Back to work safely.			

Rick McKay
 Foreman/Superintendent

09/03/24
 Date

Project:	450 Union Remediation	Project No.:	24-071	Date:	09/03/24
Client:	2201 Union LLC	Location:	Brooklyn, NY	Day of Week:	Tuesday
Owner:	2201 Union LLC	Superintendent:	Rick McKay	Days on Site:	20
Manager:	Trae Deri	Engineer:	Srujan Prasad	Shift Times:	7:00-17:00
Production:			Completion:		
Today:	0.00 CY	0 Columns	9% Columns		
To-Date:	455.65 CY	4 Columns	10.36% CY		
Materials Received:					
Material	Unit	Today	Total	Notes	
Slag- Grade 120	Ton	0	76		
Portland Cement - Type 1L	Ton	0	25		
Hours	Equipment	Task	Hours	Employees On Site	Trade
10.0	Offroad Forklift	Material Handling		Trae Deri	PM
10.0	185 Air Compressor	ISS Mixing	12.0	Rick McKay	SUPT
10.0	Conex box(1)	Storage		Srujan Prasad	ENG
10.0	300kw Generator	Batch Plant		Eric Shannon	DRILL
10.0	Lo-pro silo(2)	Cement Storage	10.5	Miguel Maldonado	LAB
10.0	Flash mixers (2)	Batch Plant		Daniel Oliveira	BPO
10.0	Moyno pump(2)	Batch Plant	8.0	Peter Liota	OP
10.0	Delmag Hydraulic Rig	ISS Mixing	5.0	Steven Reda	LAB
10.0	Manlift(1)	Maintenance			
10.0	Kobelco 210 Excavaor	ISS Mixing			
10.0	250kw Generator	Batch Plant			
10.0	Kobelco 300 Excavator				
120	TOTAL DAY HOURS		36	TOTAL DAY HOURS	

LEGEND:

SUPT- Superintendent, **PM**- Project Manager, **ENG** - Engineer, **SSHC** - Health & Safety Coordinator, **LAB** - Laborer, **OP** - Operator,
BPO - Batch plant Operator, **OILER** - Oiler, **DRILLER** - Rig Opeartor

Rick McKay

Foreman/Superintendent

09/03/24

Date