

DAILY STATUS REPORT

Prepared By: Antonio Cardenas

WEATHER	Snow		Rain		Overcast		Partly Cloudy		Bright Sun	X
TEMP.	< 32		32-50		50-70	X	70-85	X	>85	

NYSDEC BCP Site No:	C224219	Date:	9/4/2024
Project Name:	450 Union Street, Brooklyn, NY		

Consultant: Vektor Consultants – Antonio Cardenas Visitors: WSP – Chris Disclafani	Personnel On-Site: Geo-Solutions Inc.- Subcontractor Coastal Environmental Solutions Inc.- Subcontractor
---	---

Work Activities Performed:

- GSI continued decommissioning wells RGB-1/RW-1, DB1-MW-1, DB1-MW-1S, and DB1-MW-1D. Wells were grouted and then pulled to the extent feasible. 5 feet of casing was removed for RGB-1/RW-1, 30 feet of casing was removed for DB1-MW-1, 5 feet of casing was removed for DB1-MW-1S, and 10 feet of casing was removed for DB1-MW-1D.
- GSI continued pre-clearing ISS locations.
- Vektor documented the decommissioning of the wells utilizing NYSDEC's Well Decommissioning Record logs to ensure all work conducted was in accordance with NYSDEC's CP-43 Well Decommissioning Policy.

Community Air Monitoring Program (CAMP)

An Upwind and Downwind CAMP stations were placed within the perimeters of the Site during drilling activities. The Upwind CAMP station was in the northwest portion of the Site and the Downwind CAMP station was in the southeast portion of the Site as the wind was consistently coming from the north.

Background Levels (Initial Readings at Start of Day):

PID: 0.0 ppm Dust: 0.0281 mg/m³

Highest Levels:

PID: 0.0 ppm Dust: 0.135 mg/m³

- Upwind CAMP was implemented during C&D restaging. CAMP equipment consisted of a DustTrack II Model 8530; S/N: 8530210705, AND MiniRAE 3000, Model PGM-7320 photoionization detector (PID); S/N: 592-601281.
- Downwind CAMP was implemented during C&D restaging. CAMP equipment consisted of a DustTrack II Model 8530; S/N: 8530221304, AND MiniRAE 3000, Model PGM-7320 photoionization detector (PID); S/N: 592-926055.
- Dust exceedance from upwind CAMP from 10:37 to 10:52 AM (Max. 0.108 mg/m³) from dusty site conditions. GSI applied dust suppression and readings normalized.
- Dust exceedance from downwind CAMP from 12:52 to 1:07 PM (Max. 0.135 mg/m³) due to nearby machine movement. GSI applied dust suppression and readings normalized.
- No other VOC or dust concentrations were detected in exceedance of the daily short-term exposure limit (STEL) at the work area CAMP stations.

Problems Encountered

- None

Planned Activities for the Next Day

Continued removal of the obstructions within the entire treatment area as per the NYSDEC approval of the Addendum Letter to the Pilot Test Work Plan for ISS. Continued decommissioning of all groundwater monitoring wells and recovery wells within the work areas via NYSDEC's CP-43 Well Decommissioning Policy. Submission of the RSO Work Plan for the full ISS scope of work pending receipt of the reagent mix wet sample analytical results.

SITE PLAN WITH LOCATIONS

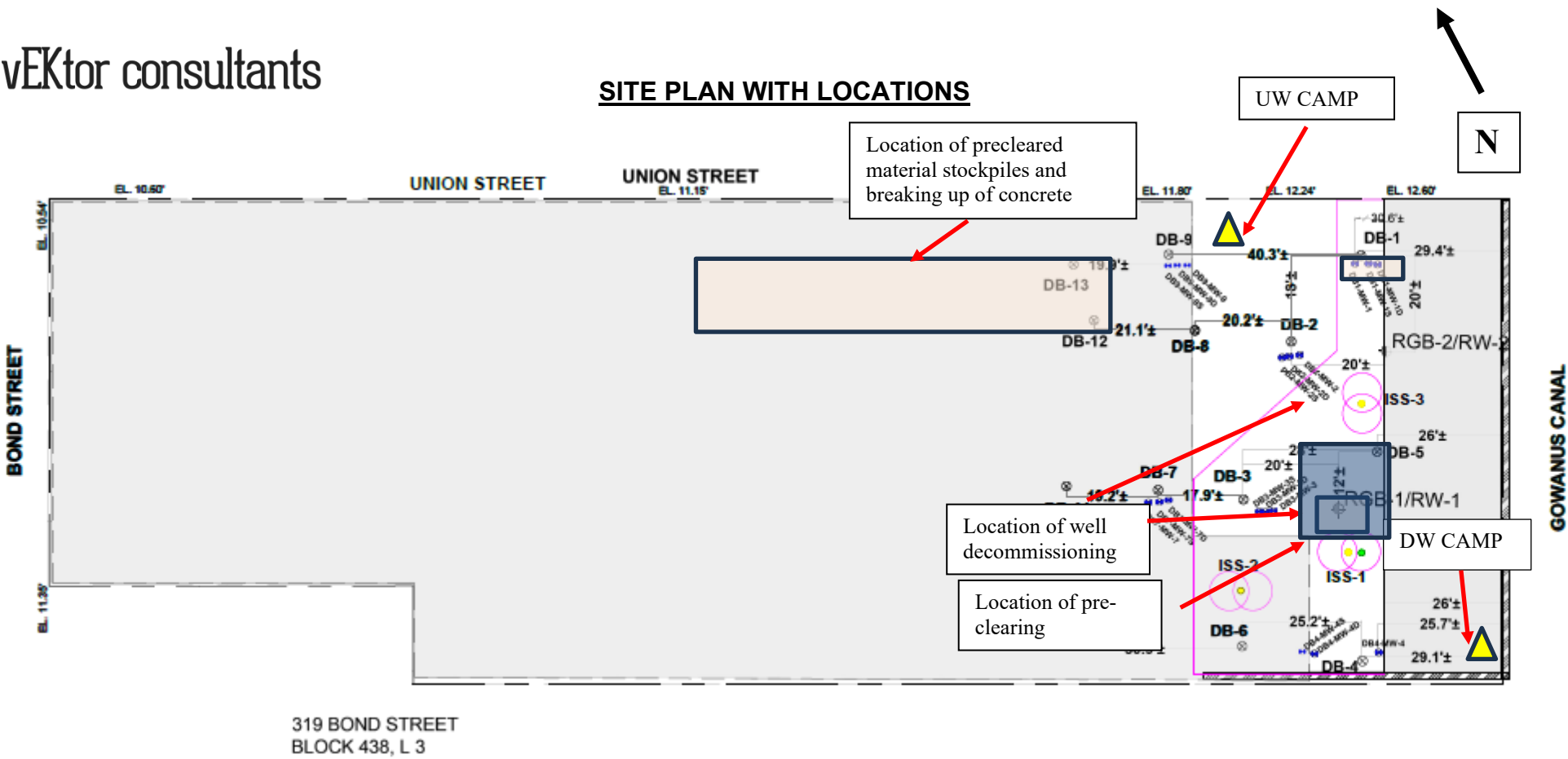


Photo Log

Photo 1:
View of GSI introducing grout for the
RW-1, view facing north.



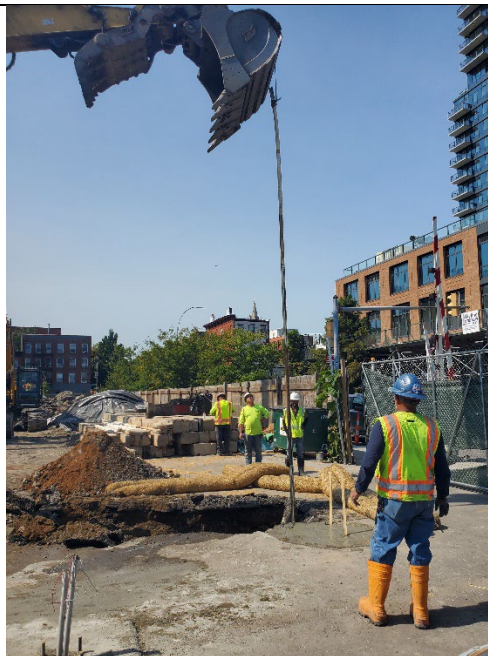
Photo 2:
View of excavation for pre-clearing,
view facing west.



Photo 3:
View of GSI applying dust
suppression, facing west.



Photo 4:
GSI pulling DB1-MW-1, view facing
northwest.



DAILY STATUS REPORT

Prepared By: Antonio Cardenas

WEATHER	Snow		Rain		Overcast	X	Partly Cloudy	X	Bright Sun	
TEMP.	< 32		32-50		50-70	X	70-85	X	>85	

NYSDEC BCP Site No:	C224219	Date:	8/29/2024
Project Name:	450 Union Street, Brooklyn, NY		

Consultant: Vektor Consultants – Antonio Cardenas Visitors: WSP – Monica Puna	Personnel On-Site: Geo-Solutions Inc.- Subcontractor
--	--

Work Activities Performed:

- GSI continued decommissioning wells DB3-MW-3S, DB4-MW-4S, DB4-MW-4D, and DB4-MW-4. Wells were grouted and then pulled to the extent feasible. 15 feet of casing was removed from DB3-MW-3S and DB4-MW-4S, 15 feet of casing was removed for DB4-MW-4D, and 7 feet of casing was removed for DB4-MW-4.
- GSI continued pre-clearing ISS locations.
- Vektor documented the decommissioning of wells utilizing NYSDEC's Well Decommissioning Record logs to ensure all work conducted was in accordance with NYSDEC's CP-43 Well Decommissioning Policy.

Community Air Monitoring Program (CAMP)

An Upwind and Downwind CAMP stations were placed within the perimeters of the Site during drilling activities. The Upwind CAMP station was in the northwest portion of the Site and the Downwind CAMP station was in the southeast portion of the Site as the wind was consistently coming from the east.

Background Levels (Initial Readings at Start of Day):

PID: 0.0 ppm Dust: 0.0161 mg/m³

Highest Levels:

PID: 0.0 ppm Dust: 0.0453 mg/m³

- Upwind CAMP was implemented during C&D restaging. CAMP equipment consisted of a DustTrack II Model 8530; S/N: 8530210705, AND MiniRAE 3000, Model PGM-7320 photoionization detector (PID); S/N: 592-601281.
- Downwind CAMP was implemented during C&D restaging. CAMP equipment consisted of a DustTrack II Model 8530; S/N: 8530221304, AND MiniRAE 3000, Model PGM-7320 photoionization detector (PID); S/N:592-926055.
- No VOC or dust concentrations were detected in exceedance of the daily short-term exposure limit (STEL) at the work area CAMP stations.

Problems Encountered

Well casings that sheared or snapped during casing pulling will be relocated and pulling reattempted, to the extent feasible, prior to ISS work.

Planned Activities for the Next Day

Continued removal of the obstructions within the entire treatment area as per the NYSDEC approval of the Addendum Letter to the Pilot Test Work Plan for ISS. Continued decommissioning of all groundwater monitoring wells and recovery wells within the work areas via NYSDEC's CP-43 Well Decommissioning Policy. Setup of Site for confirmation coring for next week.

SITE PLAN WITH LOCATIONS

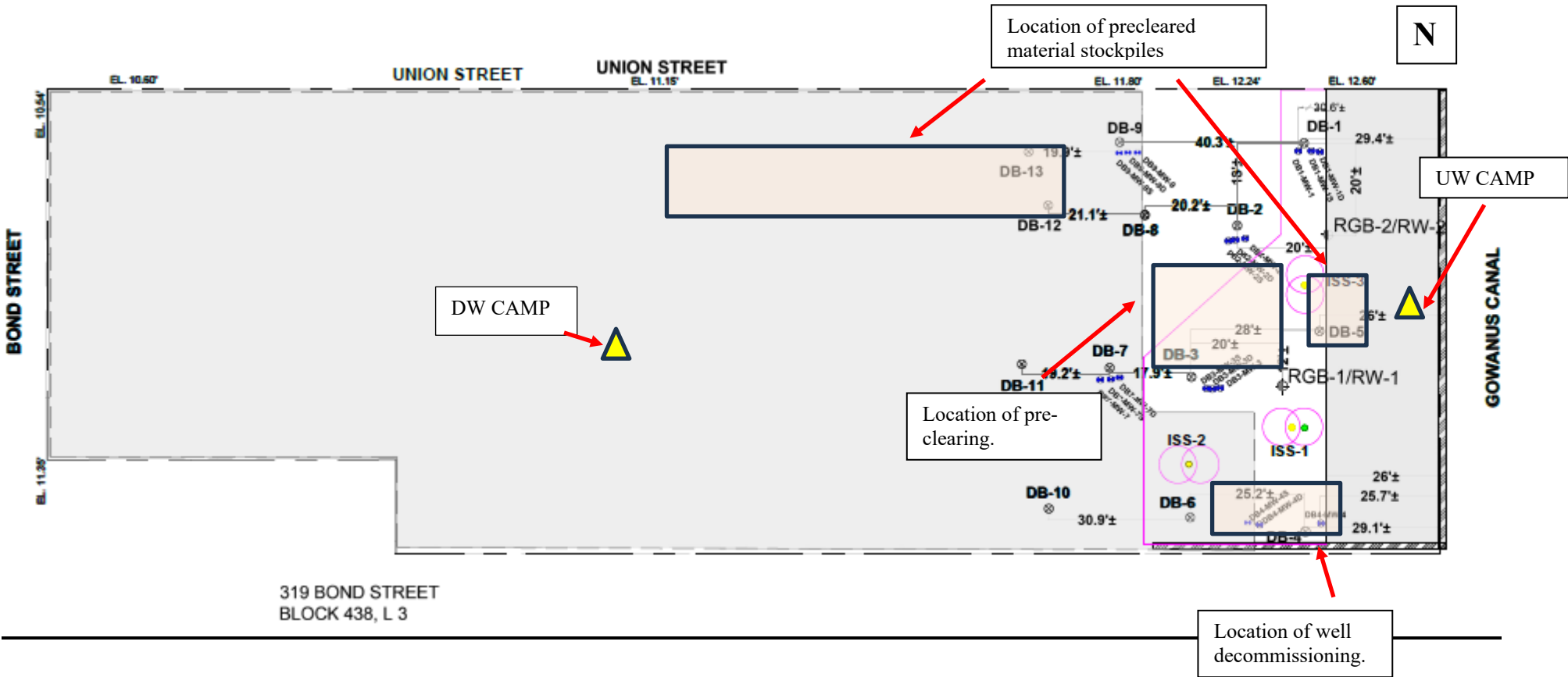


Photo Log

Photo 1:
View of GSI introducing grout for the
DB4-MW cluster, view facing west.



Photo 2:
GSI pulling DB4-MW-4, view facing
south.



Photo 3:
View of pulled well casings and
tremies placed on plastic, view facing
south.



Photo 4:
View of GSI pre-clearing ISS
locations, view facing west.



Project:	450 Union Remediation	Project No.:	24-071	Date:	09/04/24
Client:	2201 Union LLC	Location:	Brooklyn, NY	Day of Week:	Wednesday
Owner:	2201 Union LLC	Superintendent:	Rick McKay	Days on Site:	21
Manager:	Trae Deri	Engineer:	Srujan Prasad	Shift Times:	7:00-17:00

Weather:			
Low:	59	Cloud Cover:	Sunny
High:	77	Precipitation:	0"
Wind:	5-10MPH	Direction:	SSE
Description of Work Activities:			
<ul style="list-style-type: none"> - 0700 to 0730, GSI held a tailgate safety meeting and discussed the day's planned activities with site personnel. - 0800 to 0930, GSI Began to prepare grout mixture to the Monitoring wells using Type I Portland cement, Bentonite and water filled them with grout mixture. - 0930 to 1000, GSI started decommissioning Recovery well RGB-2/RW1 As much as it was feasible towards the Southeast portion of the jobsite. - 0800 to 1200, GSI beginning pre-excavation and concrete/debris removal operations in the Southeast portion of the jobsite using 300 Kobelco excavator, clearing big pieces of concrete rocks and steel plates. GSI was successful in removing the obstruction. - 1230 to 1330, GSI Began to prepare grout mixture to the Monitoring wells using Type I Portland cement, Bentonite and water filled them with grout mixture. - 1330 to 1430, GSI started decommissioning Monitoring well DB1-MW-1D, DB1-MW-1S and DB1-MW-1D As much as it was feasible towards the Northeast portion of the jobsite. - 0800 to 1500, GSI moved the excavated concrete material towards the West of the jobsite using Kobelco excavator and casted on a poly-lined and stockpile. - 1430 to 1500, Kobelco excavator managed ISS spoils, fueled equipment and performed general maintenance. - 1530, All GSI personnel offsite. 			
Conversation with Client/Inspector:			
Production Delays:			
GSI beginning pre-excavation and concrete/debris removal operations in the Southeast portion of the jobsite using 300 Kobelco excavator, clearing big pieces of concrete rocks and steel plates. GSI was successful in removing the obstruction.			
Safety Topics:			
Discussed: Eye injuries and prevention.			

Rick McKay
 Foreman/Superintendent

09/04/24
 Date

Project:	450 Union Remediation	Project No.:	24-071	Date:	09/04/24
Client:	2201 Union LLC	Location:	Brooklyn, NY	Day of Week:	Wednesday
Owner:	2201 Union LLC	Superintendent:	Rick McKay	Days on Site:	21
Manager:	Trae Deri	Engineer:	Srujan Prasad	Shift Times:	7:00-17:00
Production:			Completion:		
Today:	0.00 CY	0 Columns	9% Columns		
To-Date:	455.65 CY	4 Columns	10.36% CY		
Materials Received:					
Material	Unit	Today	Total	Notes	
Slag- Grade 120	Ton	0	76		
Portland Cement - Type 1L	Ton	0	25		
Hours	Equipment	Task	Hours	Employees On Site	Trade
9.0	Offroad Forklift	Material Handling		Trae Deri	PM
9.0	185 Air Compressor	ISS Mixing	9.0	Rick McKay	SUPT
9.0	Conex box(1)	Storage	9.0	Srujan Prasad	ENG
9.0	300kw Generator	Batch Plant	9.0	Eric Shannon	DRILL
9.0	Lo-pro silo(2)	Cement Storage	8.5	Miguel Maldonado	LAB
9.0	Flash mixers (2)	Batch Plant		Daniel Oliveira	BPO
9.0	Moyno pump(2)	Batch Plant	8.5	Peter Liota	OP
9.0	Delmag Hydraulic Rig	ISS Mixing	8.5	Steven Reda	LAB
9.0	Manlift(1)	Maintenance			
9.0	Kobelco 210 Excavaor	ISS Mixing			
9.0	250kw Generator	Batch Plant			
9.0	Kobelco 300 Excavator				
108	TOTAL DAY HOURS		53	TOTAL DAY HOURS	

LEGEND:

SUPT- Superintendent, **PM**- Project Manager, **ENG** - Engineer, **SSHC** - Health & Safety Coordinator, **LAB** - Laborer, **OP** - Operator, **BPO** - Batch plant Operator, **OILER** - Oiler, **DRILLER** - Rig Opeartor

Rick McKay
Foreman/Superintendent

09/04/24

Date

Project: 450 Union Remediation	Project No.: 24-071	Date: 9/4/2024
Client: 2201 Union LLC	Location: Brooklyn, NY	Day of Week: Wednesday
Owner: 2201 Union LLC	Superintendent: Rick McKay	Days on Site: 21
Manager: Trae Deri	Engineer: Srujan Prasad	Shift Times: 7:00-17:00

IN-SITU SOIL STABILIZATION - AUGER MIXING SAMPLE TESTING RESULTS

Project Specifications:

Perm:	$\leq 1 \times 10^{-6}$
UCS:	> 50 psi

Lab Results

Date	Time	Sample ID	Depth (bgs)	Number of cylinders casted		UCS	Permeability	UCS	Permeability	
						7 Day	7 Day	14 Day	14 Day	
						(psi)	(cm/s)	(psi)	(cm/s)	
8/19/24	11:42 AM	E6	18	8	8	243.3	4.4E-09	379.9		
8/19/24	2:10 PM	E7	22	8	8	203.3		388.6		
8/23/24	11:10 AM	B3	25	8	8	95.4				
8/23/24	12:56 PM	B4	35	8	8	206.3				

Comments:

Rick McKay

Foreman/Superintendent

Client QC Manager